

Windows95ŠÖ~A fIf“f%fCf“f\ftfgfEfFfA

Visual Basicf%f“f^fCf€ fCf“fXfg[]f<-pfvf[]f0%f%f€



POWER REPORT“Á»fJf€f“f_[] '97 1€Ž

New!

fXfNfŠ[]f“fZ[]f[]f[]f“ÁWfIf“f%fCf“f\ftfgfEfFfA



fZ[]f[]f[]fZ[]f[]f[] for Windows95

New!



Dolphin for ,X,T[]@Ver1.1

New!



,É,á,ñ‘¾~Y,r,d for ,X,T[]@Ver1.0

New!

POWER REPORT“Á‘I []V[]ìfIf“f%fCf“f\ftfgfEfFfA



f}f<f`ftf@fCf<frf...[]f[]f[][,ß,a,Ë,,ñ Ver1.21

New!



NICOLE ProcessSpy 1.0

New!



QuickDirectDraw ver 1.0

New!



ÃP½, Ä-Ïß, Å½À°ÄÒÆ°, ðÏß-Ïß±-Ïß POPUP95



POWER REPORT“Á‘I ’è”ÔfIf“f%fCf“f\ftfgfEjFjA



GV.EXE f}f<f`ftfH[f}fbfg‘Î%ž%æ‘æf[f_ Ver 0.76



%æ‘ærf...[f Susie for Win32 Ver0.36



EmTerm95 Ver3.16



LHMELT Ver0.61



□GŠÛfL□[f□□[fhf`fFf“fWff□[V2.1



□GŠÛfGfffBf^ for Win95 Ver2.13



%pÆê□GŠÛ□ì□-fLfbfg for □GŠÛfGfffBf^ Ver2.13



□GTerm Ver3.15 for Win95/NT



□GTermf%f“f` Version 1.0



GDW%»Æv%æ Version 2.03



GD©,! for Windows95 Version 6.1



GCaps for Windows95 Version 4.2



DDwin32 Ver1.56



,c,n,b,d,w,d .DOCftf@fCf<,iŽ©“®”»•Ê



Susie32 plug-in library Ver0.05



LHASA Ver 0.09




UNLHA32.DLL Ver0.65



UNARJ32.DLL Ver 0.07


New! DDwin32 Ver1.56

インストールの実行

 %æ-ÉfCf[] [fw



 žû~^ffBf@fnfgfš DISC1:\OLS\WIN95\DDW156

 []ž0 ‘[]-{} ~a”n []E thakata ž[]

 “à-e

DDwin,Æ,Í
“džqfufbfNfvf@[] [f,,[] []iSONY DATA Discman “™[]j,Åžg-
p,³,ê,é“džqfufbfN,“,æ,Ñ EPWING <K-ñ[]iVer.2,É,à^ê•”‘Î%ž[]j,İ
CD-ROM ,đ Windows ,©,çžg-p,·,é,½,β,İfvf[]f0f%f€,Å,·[]B

“džqfufbfN,đžg-p,·,é[]ê[]‡,Í[]AfVf“f0f<CDfAf_fvf^,ª•K-

v, Å, · □ B f A f _ f v f ^, Í □ A f C f R □ [f h " X □ A f I □ [f f f B f I " X "™, Å □ w " ü, μ, Ä, -
, ¾, ³, ç □ B □ i, ½, ¼, μ □ A 8 c m C D, ð, » , Ì, Ü, Ü Ž g, !, é f h f % f C f u, Å, Í • K - v, , è
, Û, ¹, ñ □ B □ j

, Å, «, é, ±, Æ
Ë ÿ □ ö Š Ö ~ A

□ E

© □ o, μ Ê Ê Ë ÿ □ ö □ A □ ð Ë □ Ë ÿ □ ö □ A © □ o, μ Ê Ê □ ð Ë □ E f N f □ f X Ë ÿ □ ö □ i D D w i n, Å, Í
, ±, ê, ç, ð ' □ □ Ì, μ, Ä f C f " f f f b f N f X Ë ÿ □ ö, Æ Ë ¾, » □ j

□ E f □ f j f ... □ [Ë ÿ □ ö □ A • ; □ ð Ë Ë ÿ □ ö □ A f 0 f % f t f B f b f N Ë ÿ □ ö □ A % æ -
Ê Ê Ê Ë ÿ □ ö □ A ' ¼ □ ' □ ð Ë Ë ÿ □ ö

□ E ' S • ¶ Ë ÿ □ ö

□ E ^ ê Š ± Ë ÿ □ ö

□ E ' â - Ê Ë ÿ □ ö □ i Š Y " - 3 2, 0 0 0 Ê ê, Ü, Å □ j % Å " \

□ E f C f " f f f b f N f X Ë ÿ □ ö, Æ ' S • ¶ Ë ÿ □ ö, Å A N D □ A O R □ A N O T □ ð Ë □ Ž w ' è

□ E ' ¼, Ì f A f v f Š f P □ [f v f # f " , ©, ç f z f b f g f L □ [, Ê, æ, é Ë ÿ □ ö < @ " \

□ i 1 6 f r f b f g " Å, Ì, Ý □ j

□ E f N f Š f b f v f { □ [f h Ê o - R, Ì Ž © " @ Ë ÿ □ ö < @ " \

• \ Ž ! Š Ö ~ A

□ E f □ f j f ... □ [□ A f _ f C f A f □ f 0, Ì % p Ê ê • \ Ž !

□ E % Å • Ì f s f b f ` f t f H f " f g Ž g - p % Å " \

□ E Ë ÿ □ ö Ê < % Ê, Ì • \ Ž !, Ê ~ A ' ± f, □ [f h □ i " d Ž q f u f b f N f Š □ [f _ □ [, Æ " ^ , ¶ • \

Ž ! • û - @ □ j, Æ ¶ € - Ú f, □ [f h □ i Ë ÿ □ ö, μ, ½ □ € - Ú, ¾, ^ , ð □ Ø, è • ª, ^ , Ä • \

Ž !, • , é f, □ [f h □ j, ª Ž g - p % Å " \

□ E % p • ¶, Ì f □ □ [f h f % f b f v

□ E < Ö ' ¥ □ ^ - □

, » , Ì ' ¼

□ E Ë ÿ □ ö Ê < % Ê f t f @ f C f < □ o - Í □ i f □ f j f ... □ [, Ì □ u f G f f f B f ^ < N " @ □ v □ j

□ E % æ ' æ, ð Š Ü, P Ë ÿ □ ö Ê < % Ê, Ì f N f Š f b f v f { □ [f h, Ö, Ì • ; Ž Ê

□ E □ " à " Å □ A Š C Š 0 " Å □ i E B G □ j f ^ f C f g f < , Ì Ž © " @ □ Ø, è ' Ö, !

□ E % p ~ a □ Ì ~ a % p Ž © " @ □ Ø, è ' Ö, ! < @ " \

□ E • ; □ " D D w i n, Ì " ^ Ž Ž Ž g - p

□ E C D, Ì " à - e, ð f n □ [f h f f f B f X f N, É f R f s □ [, μ, Ä Ž g - p % Å " \

□ E E P W I N G < K - ñ C D - R O M, Ì % ¹ □ ° □ o - Í

, Å, «, È, ç, ±, Æ

□ E " d Ž q f u f b f N, Ì % ¹ □ ° □ o - Í

□ E □ F Ê © - { , Ì • \ Ž !

□ E ^ ó □ ü

□ ! f C f " f X f g □ [f < □ I - ¹ Ê ä □ A ç I N S T _ T M P £ f t f H f < f _ , Í □ í □ æ, μ, Ä, , ¾, ³, ç



ftf@fCf<\□□-

DDW156
8:20

LZH

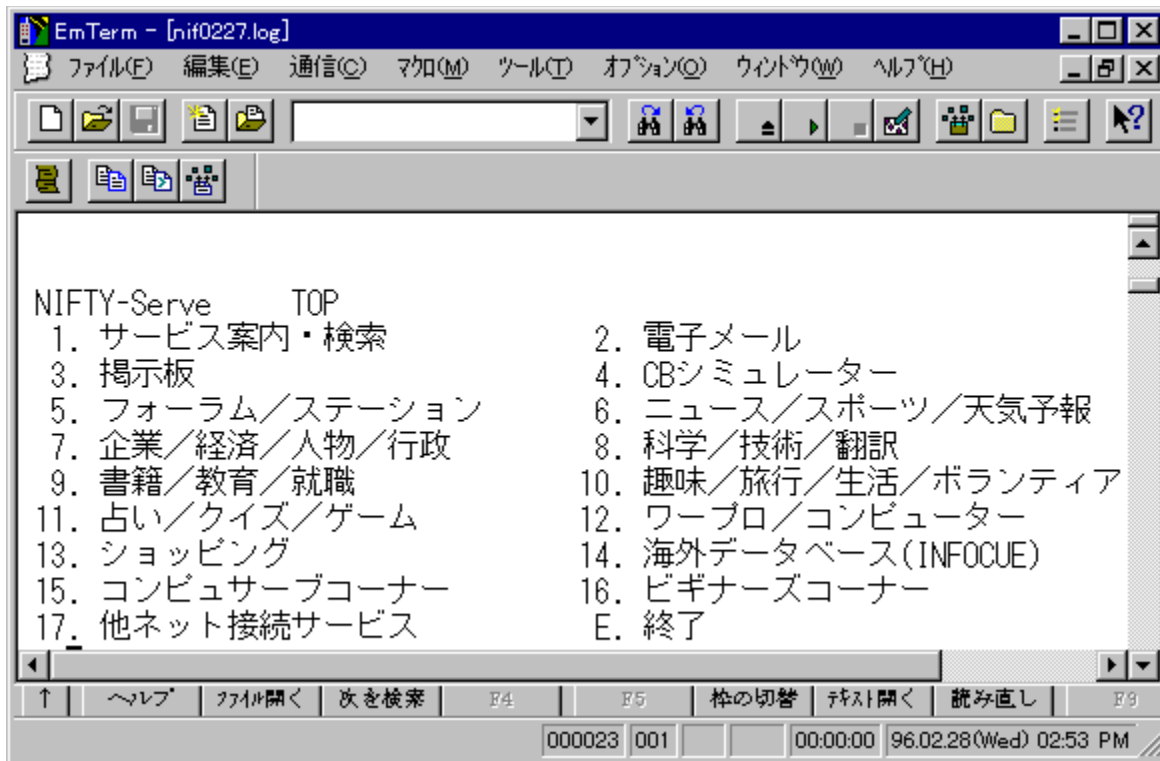
603,319

96-07-16

New! EmTerm95 Ver3.16

New!

New! %æ-Êfcf□□[fw



New! žû~^fffbf&fnfgfš DISC1:\OLS\WIN95\EMT316

New! □ižò -LQÀ%ižĐfgGf€f\ftfg

New! “à-e

EmTerm 95 ,Í□AWindows 95 ,É,φ,¿‘□,‘Î
%ž,μ□A^À’è“x”²EQ,ì32frfbfg,ì’è”0’É□Mf\ftfg,Å,·□BEmTerm 95
,É,ÍŽŸ,ì,æ,α,È“Á’·,ª, ,è,Û,·□B

□š^À’è,μ,½□,‘¬’Ê□M

□@Win32f}f<f`fXf€fbfh,ð~
p,μ,½“Æ“Á,Ì’Ê□M•ûŽ®,É,æ,è□A”ñ□í,É□,‘¬,É“®□ì,μ,Û,·□B’â–
Ê,Ìf□fbfZ□[fw,ð“Ç,ñ,Å,ç,é,Æ,«,à€y%ö,ÉfXfNf□□[f<,μ□A,ç
,ç,¾,¿,ðŠ’,¶,³,¹,Û,¹,ñ□B^ê“xŽg,Á,Ä,Ý,é,Æ□A,â,ß,ç,ê,Ë,,È,é
%ö“K,³,Å,·□B

□š□[ŽÀ,μ,½f^□[f~fif<<@”\
□@Color ANSI, VT-100, VT-52 ’[—fgf~f…f€□[fvf#f“,â□ASHIFT
JIS, □VJIS, <€JIS, NEC JIS, EUC,È,Ç,Ì“ú–{€êfR□[fh’Î
%ž,È,Ç□Af^□[f~fif<,Æ,μ,Ä,Ì–{–^,Ì<@”\
□[ŽÀ,³,¹,Ä,ç
,Û,·,Ï,Å□A–á,¡,Ï□AUNIX,Ì’[—,Æ,μ,Ä,à–â’è,Ë,-
“®□ì,μ,Û,·□B,à,¿,è,ñ□AANSI,É’Î%ž,·,é’n•û,âŠCŠO,ÌBBS,Å,àfJf
%□[·\Ž¡,Å%ö“K,É,²~–p,ç,½,¾,–,Û,·□B

□šWindows 95 TAPI ,É’Î%ž
□@TAPI ,É’Î%ž,μ,Ä,ç,Û,·,Ï,Å□A–
á,¡,Ï□Af_fCf,,f<,Ìfvf□fpfefB,ð•Ï□X,·,é,¾,–,Å□A□’”Ô□t,âžsŠO<Ç
”Ô,ªŽ©“®“I,É•Ï□X,³,é,Û,·□B,Û,½□A’¼,ÌTAPI,É’Î%ž,μ,Ä,ç,éFAXf\
ftfg,ðŽó□M’Ò<@,³,¹,È,ª,ç□A’Ê□M,ð□s,±
,Æ,à,Å,«,Û,·□B,à,¿,è,ñ□A□]–^,Ì,æ,±,Éf,fff€,ð’¼□Ú□S€ä,·,é,±
,Æ,à,Å,«,Û,·□B

□šTelnet ,É’Î%ž
□@Telnet ,Å,Ì□Ú’±,à□AfVfŠfAf<€o–R,Æ’S,•Ï,í,ç,È,çŠ’Šo,Åžg–
p,Å,«,Û,·□B,»,Ï□ê□#,Å,à□A”]’–fvf□fgfRf<,É,æ,éfofCfifŠ”]’–
,ðfTf|□[fg,μ,Ä,ç,Û,·□B’½□”,Ì telnet –pf^□[f~fif<
fEfBf“fhfE,ð“~Žž,É•\Ž¡,μ□A•j□”,ÌfzfXfg,Æ“~Žž,É□Ú’±
,μ,Ä,à□A^À’è,μ,Ä“®□ì,μ,Û,·□B•Đ•û,Å□AZMODEM ,Å”]’–
,μ,È,ª,ç□A,à,±•Đ•û,Å B Plus ,Å”]’–,·,é,Æ,ç,±Žg,ç•û,à%Â”\
,È,Ì,Å,·□B

□š□, <@”\fGfffBf^“à’
□@’Ê□Mf\ftfg,É,Ï•K–v,ÉfGfffBf^,ª“à’ ,μ,Ä,ç,Û,·,Ï,Å□AEmTerm
95 ,Æ•Ê,ÉŠO•”fGfffBf^,ð–p^Ó,·,é•K–
v,Í, ,è,Û,¹,ñ□B,μ,©,à□AfefLfxfg,ð’–□M,·,é□Ú,É•Ö–
~ ,É<Ö’¥•¶Žš,Ìžw’è<@”\□A–³□S€AUNDO&REDO<@”\□AOLE2fhf
%fbf0□•fhf□fbfv<@”\,È,Ç,ª“ö,í,Á,Ä,–,è□AfefLfxfg,Ì’–
□M,à”ñ□í,ÉŠE’P,Å,·□B–á,¡,Ï□AfefLfxfg,Ì^ê•”,ð’–
□M,μ,½,ç□ê□#,Í□A,»,Ì•”ª,ðf}fEfX,Å’I’ð,μ□Af^□[f~fif<fEfBf“f
hfE□ã,Éfhf%fbf0□•fhf□fbfv,·,é,¾,–,Æ,ç,±Žè€y,³,Å,·□B

□šLHAftf@fCf<,Ì%ð“€<@”\
□@LHA,Ì□’€Éftf@fCf<,ðf_fEf“f□□[fh,·,é,Æ□AŽ©“®“I,É%ð“€
,μ□A,μ,©,à□A%ð“€,μ,½ftf@fCf<,ÌftfHf<f_,ðŽ©“®\Ž¡,³,¹,é,±
,Æ,à%Â”\
,Å,·□B,Û,½□A’Ê□Mf□f0,Ìftf@fCf<,ð”N€Ž“ú,Ì€\,Å•Û’¶,μ,Ä□A€Ž•Ê,
É^³□k,μ,ÄŠÇ–□,·,é,±,Æ,à,Å,«,Û,·□B(UNLHA32.DLL,ª•K–v)

ŠISHfefLXfg, Ĩ•œƐ³<@“\
@ÉMf0, ÉISH»», ³, ê, ½fefLXfg, a, , éê†, ÍAf}fEfX, Ā‘I‘ð, µ
, ĀAISH•œƐ³fRf}f“fh, ð‘I‘ð, ·, é, ¾, -, ĀA, », Ĩ•“•a, ð, ·, ®, É•œƐ³, ·
, é, ±, Ā, a, Ā, «, Ü, ·B (ISH32.DLL, a•K-v)

Š, <@“\f}fNf, Ĩ“<Ú
@†Ev182Ží-p, à, ĨRf}f“fh, a~p, Ā, «, é, <@“\f}fNf EmTerm
Basic , a“<Ú, ³, ê, Ā, †, Ü, ·, Ĩ, ĀAfI [fgfpcf fbf, É, ÇŽ-
RŽY, É‘ÉM, ð‘€ , é, ±
, Ā, a, Ā, «, Ü, ·B, Ü, ½Af}fNf, Ĩffofbf0, ÍA\•fJf% [•\Ž, Ĩ“à‘
fGffBf^, ð~p, µ, ½“†SJ”ŠĀ««, Ās, x, Ĩ, ĀAVisual Basic
•Ā, Ý, Ĩœ“K, È‘€Ĩ«, ðŽĀ»», µ, Ü, µ, ½B, Ü, ½A‘½, -
, Ĩft [fU [, ĨŠF, ³, ñ, É, æ, Ā, ĀĨ, ç, ê, ½ftfŠ [, Ĩf}fNf, a‘½“œöŠJ,
³, ê, Ā, †, Ü, ·B

ŠEmTerm for Windows, ©, ç, Ĩ^Ús, É, à”z-¶
@EmTerm 95 , ÍAEmTerm for Windows , ĀŽg-p, µ, Ā, †
, ½Af}fNf, âEmTermftf@fCf< (Šg’fŽq, a.emt, Ĩftf@fCf<)
, a, », Ĩ, Ü, Ü~p, Ā, «, Ü, ·, Ĩ, ĀA16bitŠĀ««, ©, ç, Ĩ^Ús, àŠy, Ā, ·B

Š%ŠŽÒ, É, à^ÀS I
@Žā-v, É‘ÉMflfbfg (ASCII-NET, CompuServe, NIFTY-Serve,
PANA-VAN Silk, PC-VAN, People, RIMNET, “úœoMIX)-
p, ĨEmTermftf@fCf<, a•W€‘“ö, ³, ê, Ā, †
, Ü, ·BEmTerm, ðfZfbfgfAfbfv, µ, ½, çA“d~b”Ô†, ĀID, ĀfpfXf [fh,
³, †, , ê, Ĩ, ·, ®, É‘ÉM, aŽn, ß, ç, ê, Ü, ·, Ĩ, ĀA%ŠŽÒ, É, à^ÀS, Ā, ·B

Š [ŽĀ, µ, ½fTf | [fg‘Ĩ§
@NIFTY-Serve, PC-VAN, ĨfTf | [fgftfH [f%f€
, âfCf“f^ [flfbfg, Ĩf [fŠf“fOfŠfXfg, ð‘É, µ, ĀA‘|“š, Ĩ [ŽĀ, µ, ½f
Tf | [fg, ðs, Ā, Ā, “, è, Ü, ·, Ĩ, ĀA^ÀS, µ, Ā~p, Ā, «, Ü, ·B

!fCf“fXfg [f< I-¹ĀA†INST_TMPf fHf< f_, ĨĨœ, µ, Ā, , ¾, ³, †



ftf@fCf< \-

EMT316 LZH 1,016,570 96-11-29 21:30

New! GV.EXE f}f<f`ftfH[]f}fbfg'Î%ž%æ'æf[]f_[] Ver 0.76

New!

New! %æ-Êfcf[]fW



New! Žû~^ffBfæfNfgfŠ DISC1:\OLS\WIN95\GV076

New! []îžò ,Æ,Ñ,½ ž[]

New! "à-e

,±,Ìf\ftfgfEfFfA,Í[]AWindows95/NT[]ă,Â,ç,ë,ç,ë,È

æ'æftf@fCf<, ðŒ©, é, ½, ß, É, ì, ñ, μ, Ü, μ, ½, B, "Á, ¥, Æ, μ, Ä, È, Ì, æ, π, È, à, Ì, ð, , è, Ü, ·, B

E'½, , Ìf0f%ftfBfbfNftfH[f}fbfg, É'Îž
Eæ'æff[f^, ð256/16F, ÉŒ, F, μ, Ä•\Ž!%Â"\
E•;|"æ'æff[f^, ÌŽ©"®~A'±•\Ž!
Eæ'æff[f^, Ì%E^¶%ñ"]AŠg'å^k-•\Ž!
E•;|"æ'æff[f^, ÌŽ©"®~AŒ<•\Ž!
Efff[f^'t, ÌfRff"fg•\Ž!
EfhfLf...f"fgftf@fCf<•\Ž!
E'Sæ-Ê-~p•\Ž!



ftf@fCf< \ \ -

GV076

LZH

231,385

96-12-03

23:52

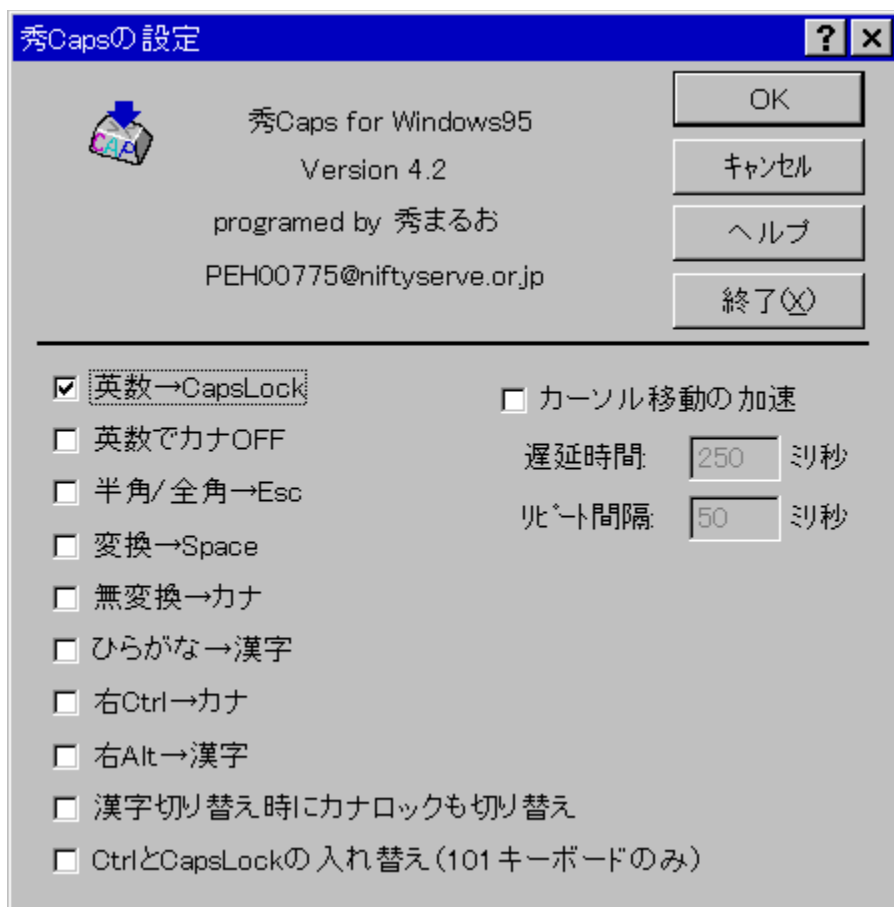
New!

□GCaps for Windows95 Version 4.2

New!

New!

‰æ–ÊfCf□□[fw



New!

Žû~^ffBfœfNfgfŠ DISC1:\OLS\WIN95\HCAPS420

New!

□iž0 □Ä“; □G•v Ž□
<http://www2.mitene.or.jp/maruo/>

New!

“à–e

□u□GCaps95□v, Í□Afl□[f{□[fh'€□ì, ÉŠÖ~A, μ, ½ŠeŽí, Ì<@"\
, ð'ñ<ÿ, μ, Ü, ·□B^È%º, Ì, æ, ¨, È<@"\^ª, , è, Ü, ·□B

□E□@□u%p□"□vfl□[, ð□uCapsLock□vfl□[, É, μ, Ä, μ, Ü, ¨□BShiftfl□[, ð
%ÿ, ^³, È, , Ä, àCapsLock, ^ª□Ø, è'Ö, |, ê, é, æ, ¨, É, È, é
□E□@□u%p□"□vfl□[, ð%ÿ, μ, ½Žž, ÉŽ©"®"I, ÉfJfif□fbfN%ð□æ
□E□@□u"^¼Šp/'SŠp□vfl□[, ð□uEsc□vfl□[, É, μ, Ä, μ, Ü, ¨□B98, Ìfl□[f{□
[fh, ÉŠμ, ê, ½□l, É, Í, Æ, Á, Ä, à•Ö~
□E□@□u, Ð, ç, ^ª, È□vfl□[, ð□uŠžŽš□vfl□[, É, μ, Ä, μ, Ü, ¨□B, ©, ÈŠžŽš•İŠ
·, Ì<N"®, ^ªŠy, É, È, é
□E□@□u•İŠ•□vfl□[, ðSpacefl□[, É, μ, Ä, μ, Ü, ¨□B
%pÊêfl□[f{□[fh, â98, Ìfl□[f{□[fh, ÉŠμ, ê, ½□l, É, Í, Æ, Á, Ä, à•Ö~
□E□@□u-^³•İŠ•□vfl□[, ðfJfifl□[, É, μ, Ä, μ, Ü, ¨
□E□@, ©, ÈŠžŽš•İŠ•on/offŽž, ÉŽ©"®"I, ÉfJfif□fbfN□Ø, è'Ö, |, à, ·, é

□E□@%Ectrlfl□[, ðfJfifl□[, É, μ, Ä, μ, Ü, ¨
□E□@%EAltfl□[, ðŠžŽšfl□[, É, μ, Ä, μ, Ü, ¨
□E□@Ctrlfl□[, ÆCapsLockfl□[, ð"ü, ê'Ö, |, Ä, μ, Ü, ¨□B□i101fl□[f{□[
fh, Å, Ì, Ý□j
□E□@fJ□[f\ f<^ú"®, ð%Á'¬, ·, é□B

□@, ±, ê, ç, Ì<@"\^³, Í, » , ê, ¼, êON/OFF, ·, é, ±, Æ, ^ª, Å, «, Ü, ·□B

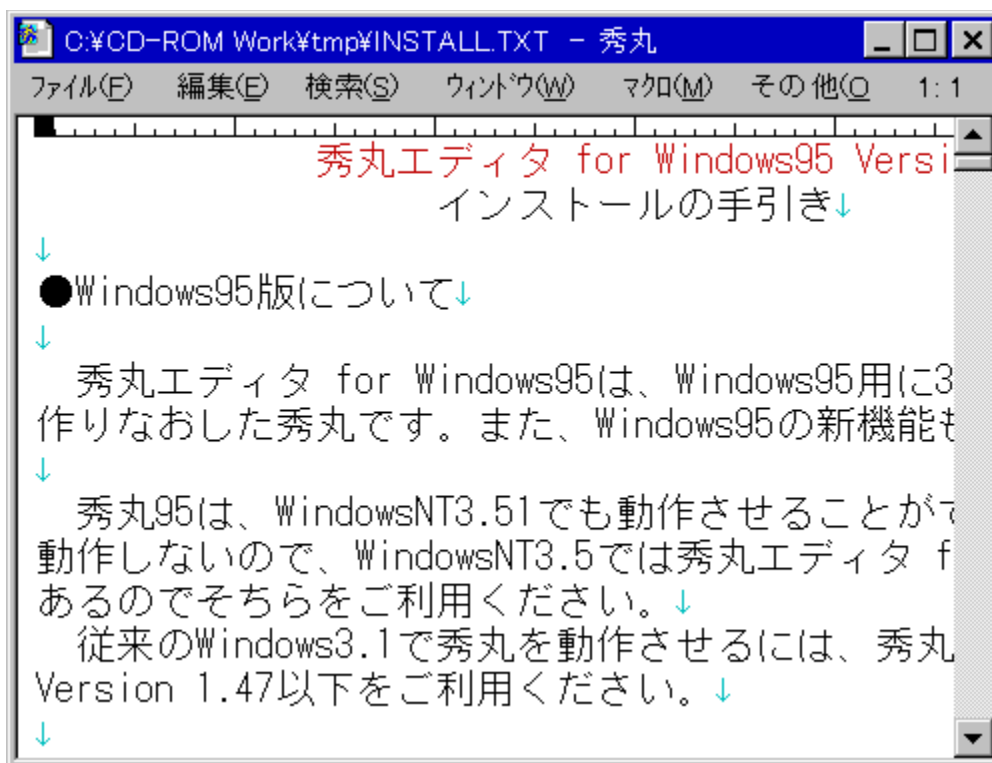


ftf@fCf<□\□-

New! 秀丸エディタ for Win95 Ver2.13

New!

New! 秀丸エディタ for Win95 Ver2.13



New! 秀丸エディタ for Win95 Ver2.13 DISC1:\OLS\WIN95\HM213

New! 秀丸エディタ for Win95 Ver2.13
http://www2.mitene.or.jp/maruo/

New! 秀丸エディタ for Win95 Ver2.13

秀丸エディタ for Windows95, 32bit版
インストールの手引き
秀丸95は、WindowsNT3.51でも動作させることができます。ただし、WindowsNT3.5では秀丸エディタ for Windows95は動作しないので、秀丸エディタ for Windows3.1をご利用ください。従来のWindows3.1で秀丸を動作させるには、秀丸 Version 1.47以下をご利用ください。

©GŠÛ95, ÍAWindowsNT3.51, Å, à“®ì, ³, ¹, é, ±
, Æ, º, Å, «, Ü, ·BWindowsNT3.5, Å, Í
“®ì, µ, È, ç, Ì, ÅAWindowsNT3.5, Å, ÍGŠÛfGffBf^ for
WindowsNT, ð•Ê“r-p^Ó, µ, Ä
, , é, Ì, Å, »,, ç, ð, ²-~-p,, ¾, ³, çB
©]-^, ÌWindows3.1, ÅGŠÛ, ð“®ì, ³, ¹, é, É, ÍAGŠÛfGffBf^ for
Windows
Version 1.48^È%º, ð, ²-~-p,, ¾, ³, çB

!fCf“fXfg[f<I-¹EãAçINST_TMPftfHf<f_, Ííœ, µ, Ä, , ¾, ³, ç



ftf@fCf<[]-

HM213

LZH

541,468

96-09-20

14:51

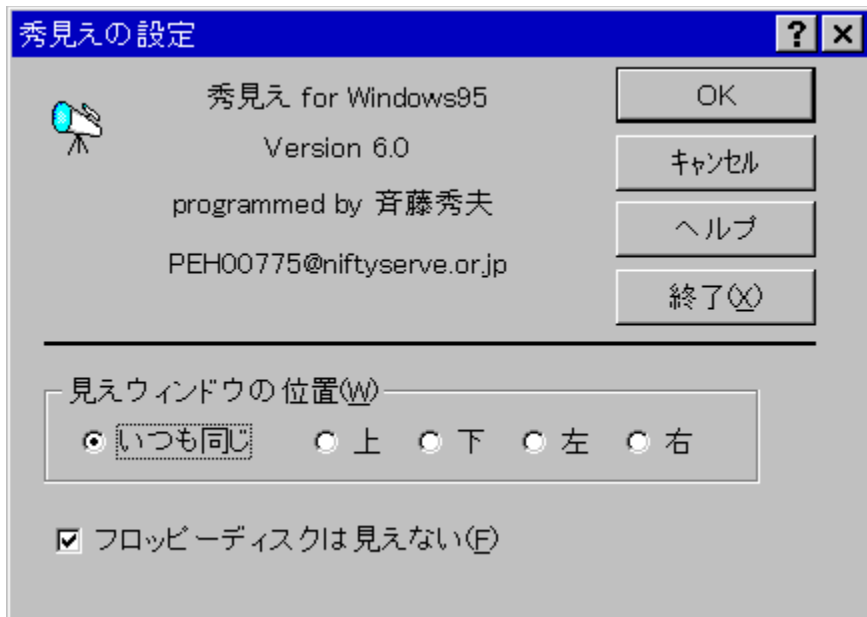
New!

□GŒ©,| for Windows95 Version 6.1

New!

New!

‰æ-ÊfCf□□lfW



New!

Žû~^ffBfœfNfgfŠ DISC1:\OLS\WIN95\HMIE610

New!

□ìžÒ □Ä“; □G•v Ž□

<http://www2.mitene.or.jp/maruo/>

New!

“à-e

□@□u□GŒ©,| for Windows95□v,Í□AWindows3.1-
 p,Í□GfSf~fSf~,ðWindows95-p,É□ì,è,È,“,µ,½•”,Å,·□B^È‰º,Ì“Á’¥
 ,ª, ,è,Ù,·□B

□EfAfvfŠfP□lfVf‡f“,Ìf_fcAf□f0f{fbfNfX’t,Åftf@fCf<-¼,ð“ü-
 Í,µ,½,è□AfŠfXfgf{fbfNfX,©,çftf@fCf<,ð‘I’ð,·,é,Æ□A,»,Ìftf@fC
 f<,Ì□æ“ª•”•ª,ðŒ©,|,é,æ,‡
 ,É,·,é,½,ß,Ì□u□GŒ©,|□vfEfBf“fhfE,ª□o,Ä,,é

□E□G□©, |fEfBf“fhfE,É,ÍfAfCfRf“,à•\Ž|,³,ê□A,»,ÌfAfCfRf“,Ífhf
%fbf0□•fhf□fbfv,μ,½,è□A%Ef{f^f“,Åf□fjf...□[,ð□o,μ,½,è,μ,Ä,ç
,è,ç,ë‘€□ì,Å,«,é□B

□E□G□©, |,ð<N“®,·,é,Æ□Af^fXfNfo□[,Ìfgf□[•”•ª,É□G□©, |,ÌfAfCf
Rf“,ª•\Ž|,³,ê,é,æ,κ,É,É,è,Û,·□B□Y’è,ð□s,κ
,É,Í,»,ÌfAfCfRf“,ðfNfŠfbfN,μ,Ä,,¾,³,ç□B



ftf@fCf<□\□-

HMIE610

LZH

23,518

96-01-31

15:48

New! □GŠŰ%»Æv%æ Version 2.03

New!

New! %æ-ÊfCf□□[fw



New! Žû~^ffBfÆfNfgfŠ DISC1:\OLS\WIN95\HMIZE203

New! □îžò □G,Ü,é,¨ Ž□
<http://www2.mitene.or.jp/maruo/>

New! “à-e

□GŠŰ%»Æv%æ, Í□A□GŠŰ^ÈŠ0, ÌfEfBf“fhfE, à□A%Â”\
 , ÈÈÀ, è□GŠŰ, Æ“~, ¶, æ, ¨, È‘€□ì, ª, Å, «, é, æ, ¨, ÉŠg’f, ·, é, ±, Æ, ð-
 Ú“I, Æ, µ, ½□í’’fAfvfŠfP□[fVf†f“, Å, ·□B

, ½, Æ, |, Î□GŠŰ, ÌfL□[Š,, è“-, Å, ÅCtrl-E S D X, ÉfJ□[f\
 f<^Ú“®, ðŠ,, è“-, Å, ½□ê□#□A’¼, ÌfAfvfŠfP□[fVf†f“, Å, à“-l, ÉCtrl-
 E S D X , ÅfJ□[f\ f<^Ú“®, µ, ½,, È, é, à, Î, Å, ·□B□GŠŰ%»Æv
 %æ, Å, Í□A, » , Ì, æ, ¨, Èfj□[fY, ð%Â”\, ÈÈÀ, èfTf|□[fg, µ, Ü, ·□B

,³,ç,É□A'¼,İfAfvfŠfP□[fVf‡f“,É,Í-{-^--³,ç<@“\
,Å□GŠÛ,ªŽ□,Á,Ä,ç,é<@“\,à□A,»,İfAfvfŠfP□[fVf‡f“,É•t%Á,·,é,±
,Æ,à-Ú“I,Æ,μ,Ä,ç,Û,·□B,½,Æ,ı,Î□GŠÛ,İ□uÊY¶,É•İŠ·□v,È,Ç,İ-
L•x,È•İŠ·<@“\,ª'¼,İfAfvfŠfP□[fVf‡f“,Å,àŽg,ı,é,Æ•Ö-~,Å,·□B

□GŠÛ%»Æv%æ,ð“@□ì,³,¹,é,É,Í□A, ,ç,©,¶,ß□GŠÛfGfffbf^,ªfcf“fXf
g□[f<,³,è,Ä,ç,È,-,è,Î,ç,-,Û,¹,ñ□B



ftf@fcf<□\□-

HMIZE203 LZH

27,286

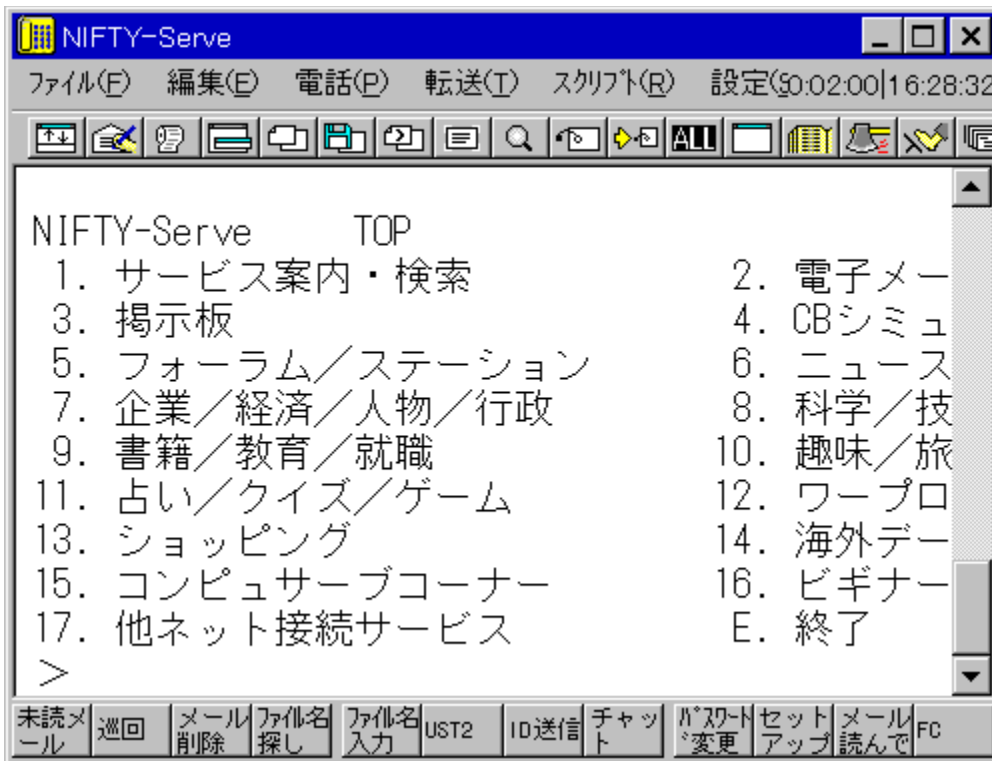
96-07-30

11:01

New! □GTerm Ver3.15 for Win95/NT

New!

New! %æ-Êfcf□□lfw



New! Žû~^fffbf&fnfgfš DISC1:\OLS\WIN95\HT315

New! □ižò □ö“; □G•v ž□
<http://www2.mitene.or.jp/maruo/>

New! “à-e

□@□GTerm ,Í□AWindows95/WindowsNT ,Ì,à,Æ,Å“@□ì,·,é'Ê□Mf\
ftfg,Å,·□B□u,Đ,Å,½□[,P□v,Æ”%¹,μ,Ä,,¾,³,¢□B,±,±,Å,Í,±
,Ì□u□GTerm for Windows95/WindowsNT□v,đ'P,É□GTerm,ÆĈ¾,±,±
,Æ,É,μ,Û,·□B

□@□GTerm for Windows95/WindowsNT,Í□A□]-^,ÌWindows3.1-
p,Í□GTerm,ð□AWindows95/WindowsNT-
p,É'â•□,É□ì,è•Ï,!,½□GTerm,Å□AWindows95/WindowsNT,Ì□V<@"\
,ð'â•□,ÉŽæ,è"ü,ê,Ä,ç,Ü,·□B

□@□]-^,ÌWindows3.1,Å□GTerm,ð"®□ì,³,¹,é,É,Í□A□GTerm for
Windows Version 2.19^È%º,ð,²-~-p,,³/₄,³,ç□B

□!fCf"fXfg□[f<□I-¹Æã□AçINST_TMP£ftfHf<f_,Í□í□œ,μ,Ä,,³/₄,³,ç



ftf@fCf<□\□-

HT315

LZH

395,687

96-07-30

11:04

New!

□GTermf%f`f` Version 1.0

ファイルのコピー

New!

Žû~^ffBfEfNfgfŠ DISC1:\OLS\WIN95\HTLAUNCH

New!

□ižò □Ä“; □G•v ž□
<http://www2.mitene.or.jp/maruo/>

New!

“à-e

□@□u□GTermf%f`f` Version 1.0□v,Í□GTerm,Ìf□ffj...
□[,Ì't,ÉfAfvfŠfP□[fVf#f“,ð“o~^,μ,½,è□AfXfNfŠfvfgftf@fCf<,ð“
o~^,μ,½,è,Å,«,é,æ,π,É,·,éfAfhfCf“fAfvfŠfP□[fVf#f“,Å,·□B

□@CD-ROM,ìžû~^ftf@fCf<,ð□GTerm-
p,ÌfffBfEfNfgfŠ,ÉfRfs□[,μ□A□u□Ý'è□EfAfhfCf“fAfvfŠfP□[fVf#f“
,ì“o~^...□v,Åhtlaunch.dll,ð“o~^,μ□A□u□GTerm,Æ,¢
,Á,μ,â,É<N“®□v,à0N,É,μ,Ä,²~~p,,¾,³,¢□B

New!

ftf@fCf<□\□-

HTLAUNCH LZH

11,392

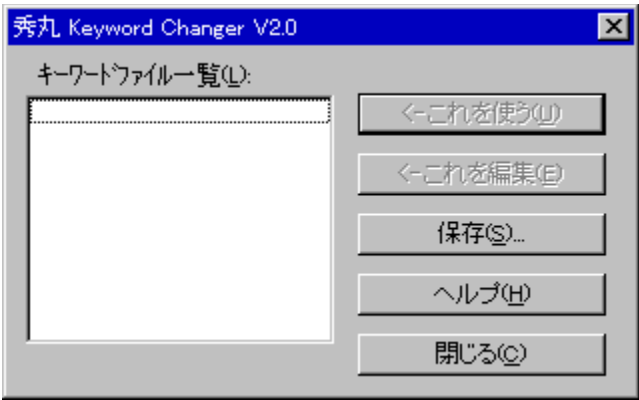
96-01-23

16:17

New! □GŠŮfL□[f□□[fhf`fFf“fWff□[V2.1

ファイルのコピー

New! %æ-ÊfCf□□[fW



New! ŽŮ~^fffbfÆfnfgfŠ DISC1:\OLS\WIN95\KWCH21

New! □ìŽÒ □Ä“; □G•v Ž□
<http://www2.mitene.or.jp/maruo/>

New! “à-e

□GŠŮfL□[f□□[fhf`fFf“fWff□[□ikwch.exe□j, Í□A□GŠŮfGfffbf^, Ì, bÆ
¾Æè<'²fL□[f□□[fh, Ì“à-
e, ðfefLfXfgftf@fCf<Æ`Ž®, Å•Ů'¶, µ, ½, è□AfefLfXfgftf@fCf<Æ`Ž®, Å
•Ů'¶, ³, ê, ½“à-
e, ð“Ç, Ý□ž, ñ, ÅÆ»□Ý, Ì□GŠŮ, Ì□Ý'è, Æ, µ, ½, è, ·, é, ½, ß, ÌfAfvfŠfP□[fV
f#f“, Å, ·□B

<@”\

, ±, ê, ðŽg, ✖
□@•Ů'¶, ³, ê, Ä, ç
, éfL□[f□□[fhftf@fCf<, ð“Ç, Ý□ž, ñ, ÅÆ»□Ý, Ì□GŠŮ, Ì<'²•\
Ž!fL□[f□□[fh, Æ, µ, Ů, ·□B

, ±, ê, ð • ò W

□@fL□[f□□[fhftf@fCf<, ð□GŠŮ, Å•ò□W, μ, Û, ·□B

•Ů'¶...

□@Œ»□Ý, ì□GŠŮ, É□Ý'è, ³, ê, Ä, ç, é<'²•\Ž!fL□[f□□[fh, ð•Ů'¶, μ, Û, ·□B

fL□[f□□[fhf`fFf“fWff, ð□GŠŮf}fNf□, ©, çŽg, ʘ•û-@

□@kwch.exe, ÌĚă, ë, Éfpf

%f□f^, Æ, μ, Ä•Ů'¶, ³, ê, ½fL□[f□□[fhftf@fCf<, Ì-

¼'0, ðŽw'è, ·, é, Æ□AfL□[f□□[fhf`fFf“fWff, Íf_fCfAf□f0f{fbfNfX, ð

□o, ³, , ÉfL□[f□□[fh, Ì“Ç, Ý□Ž, Ý, ^¾, ¯□s, Á, Ä'!□Ä, É□I⁻¹, μ, Û, ·□B, ±

, ê, ðŽg, Á, Ä□A-á, !, Ì□GŠŮf}fNf□, ©, çfL□[f□□[fh, ð□', «Š·, !, é, ±

, Æ, ʘŠĚ'P, É, Å, «, Û, ·□B

f}fNf□, Ì-á□F

run hidemarudir + "\\kwch.exe asm.kwd";



ftf@fCf<□\□-

KWCH21

LZH

17,207

96-12-05

16:07

New! LHa extractor "Lhasa" ver0.09

New!

New! %æ-ÊfCf□□[fw



New! Žû~^fffbJf€fnfgfš DISC1:\OLS\WIN95\LHASA009

New! □iž0 , ½, -, ÷, ñ ž□
<http://www.st.rim.or.jp/~otake/>

New! “à-e

Lhasa , í□u, ç, ³□v, Æ“Ç, ñ, Å, , ¾, ³, ç□B
 Lhasa , í LHa , Æ Zip , ÌfA□[fJfCfufutf@fCf<, ð%ð“€ , · , éf\
 ftfg, Å, ·□B
 <N“©, µ, Äftf@fCf<f}f□[fWff, ©, çfhf□fbfv, · , é, ¾, -, ÌŠÈ'P'€□ì, Å
 %ð“€□o-^, Ü, ·□B

Win95, È, çfffXfNfgfbfv, ÉfVf‡[]fgfJfbfg, ð[]ì, Á, Ä, » , ±
, Éfhf[]fbfv, ·, é
, ³/₄, -, Å, ·[]B



ftf@fCf<[]\[]-

LHASA009 EXE
ŽÀ[]sftf@fCf<

176,128

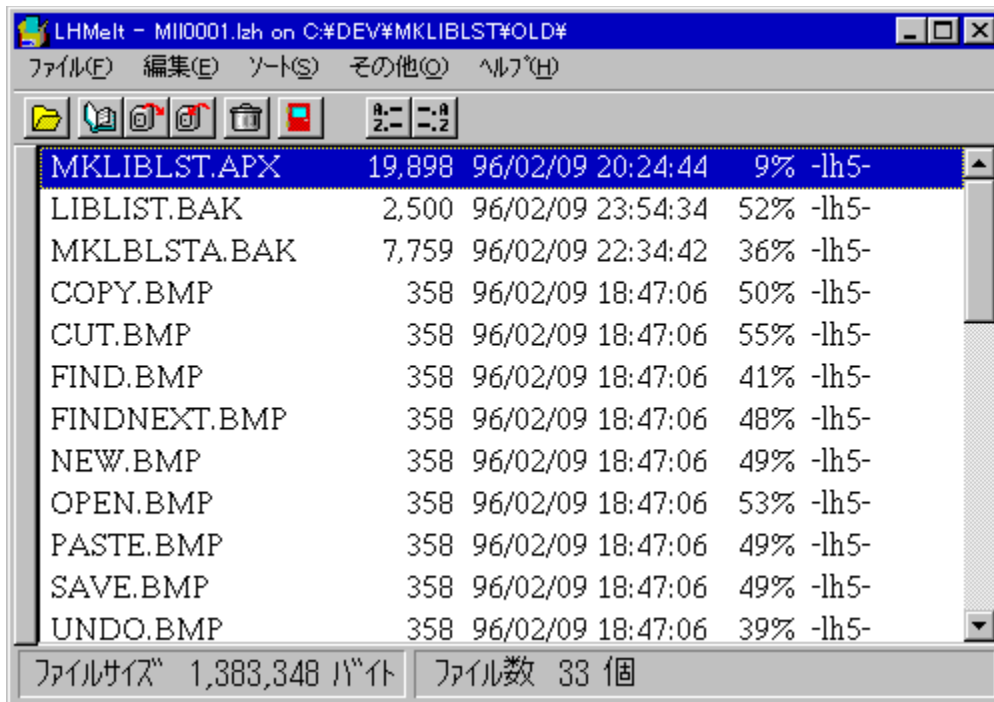
96-09-18

1:42

New! LHMELT Ver0.61

New!

New! %æ-ÊfCf□□lfw



New! Žû~^ffjBfœfnfgfš DISC1:\OLS\WIN95\LMELT061

New! □ižò Micco ž□

New! “à-e

□@LHMELT.EXE , í LZH , È, Ç, Ì□‘œÉ, ÉŠi”[, ³, ê, Ä, ç
, éftf@fCf<, ð^³□k□E%ð“€ , ·, é, ½, ß, Ìfvf□fOf%f€ , Å, ·□B-¼‘0, ^a^á, ç
, Ü, ·, ^a□C□Ù□ì, Ì CHKUNARJ.EXE , Ì, R, Qfrfbfg”Å, Å, ·□B

New! ftf@fCf<□\□-

LMELT061 EXE

207,072

96-11-27

21:55

New! %p@ê[GŠÛi~fLfbfg for [GŠÛfGfffBf^ Ver2.13

New!

New! Žû~^fffbf@fNfgfŠ DISC1:\OLS\WIN95\MARU0213

New! ižò ö“; G•v ž
<http://www2.mitene.or.jp/maruo/>

New! “à-e

@,±,ê,Í%p@ê[GŠÛi~maruo.exej~
p,İ••ªftf@fCf<,»,'¼,Å,·B^Ê%º,İftf@fCf<
,ªŠÛ,Û,ê,Ä,ç,Û,·B

@makemaru.exe ... %p@ê[GŠÛi~p••ª
@maketags.com ...
%p@ê”Åhidetags.exei~p••ª
@makebar.com ...
%p@ê”Åhidembar.dlli~p••ª

@makemaru.exe,ÍÅhidemaru.exe,©,ç,İ••ª,É,È,Á,Ä,ç
,Û,·Bhidemaru.exe,Æ“~,¶
ftfHf<f_,ÅAMS-
DOS,İfRf}f“fhfvf“fvfg,©,çumakemaru.exeØÀ°Ýv,Æ,â,é,ÆA
maruo.exe,ªi~,³,ê,Û,·B

@“~
l,ÉAmaketags.com,Íhidetags.exe,©,çmarutags.exe,ði~,µAma
kebar.com,Í
hidembar.dll,©,çmarubar.dll,ði~,µ,Û,·B

@marutags.exe,Æmarubar.dll,ÍA,»,ê,¼,êhidetags.exe,Æhidembar.dll,É-¼'0,ð•İ
X,µ,Äžg,Á,Ä,,¼,³,çB,»,İ,Û,Û,İftf@fCf<-¼,Å,Ížg,|,Û,¹,ñB

New! ftf@fCf<~\~

New! Susie32 plug-in library Ver0.05

New!

New! Žů~^ffjBfEfNfgfŠ DISC1:\OLS\WIN95\SPI32005

New! ěžò ,½, -, ě, ň ž
<http://www.st.rim.or.jp/~otake/>

New! “à-e

Win32-p, ěæ'æfrf... [f ě Susie ver0.20^È ě~ , Åžg, xplug-in, Å, · ěB
Susie-{ ' ě, ě“ -, ěffjBfEfNfgfŠ, ě'u, ě, Å%º, ³, ě ěB

, Ü, ½ ěA, , È, ½, ěfvf ěf0f% f€ , ©, ě, ±, ě, ě, ěPlug-in, ěěÄ, Ň ěo, μ, Ä
žèěy, ěæ'æ, ě“ ě, Ý ěž, pž-, ª ěo-^ , Ü, · ěB

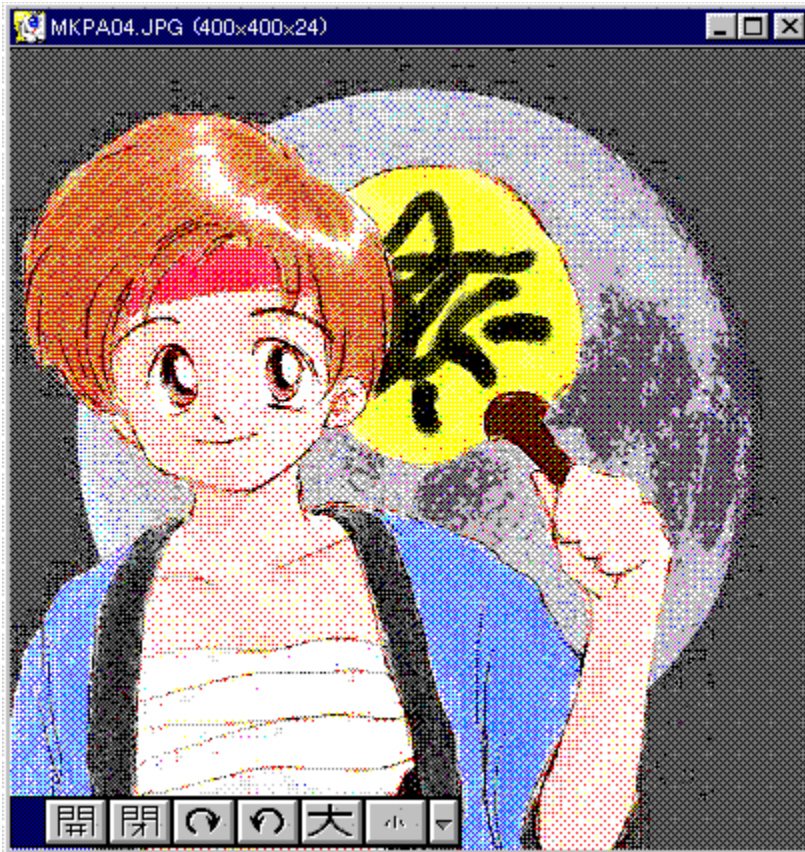
New! ftf@fCf< ě\ ě-

SPI32005 LZH 199,557 96-07-16 7:43

New! %æ'æfrf...[]f[] Susie for Win32 Ver0.36

New!

New! %æ-ÊfCf[][]fW



New! Žû~^fffbfæfnfgfš DISC1:\OLS\WIN95\SUSIE336

New! []iž0 ,½, -, ÷, ñ Ž[]
<http://www.st.rim.or.jp/~otake/>

New! "à-e

Susie, İ32bit"Å, Å, ·[]B

```

NT, 95 ,Ü,½,Í Win32s,İŠÂ<<,ÅŽg,!,Ü,·□B
'Î%ž,μ,Ä,ç,éftfH□[f}fbfg,Í^È%º,İ'Ê,è,Å,·□B
  Susie.exe"à' f□□[f_
    Windows Bitmap (.bmp)
    ftf<fJf%□[,x,½ ((.q0|.rgb)&(.fal|.ipr))
  Š0•"Plug-in □! •Ê"r SPLUG002.LZH "™,ðf_fEf"f□□[fh,μ,Ä,-
,¾,³,ç□B
  Pi 16,256□F (.Pi)
  MAG 16,256□F (.mag)
  XLD4 16□F (.q4)
  Pic 8,15,16bit (.pic)
  Pic2 8,15,24bit ŽZ□p^³□k/fnftf}f"^³□k/,x,½ (.p2)
  JPEG(JFIF) YVU/GrayScale fnftf}f"^³□k
  GIF (.gif)
  TIFF (.tif)
  HG (.hg) (□ì□~:,μ,ç,È,³,ň)
  MAKI (.mki) (□ì□~:,μ,ç,È,³,ň)
  LHa lh0-lh6 (.lzh)
  Zip

```



ftf@fCf<□\□~

SUSIE336 LZH

266,773

96-11-19

3:24

New! UNARJ32.DLL Ver 0.07

New!

New! Žů~^ffjBf&fNfgfŠ DISC1:\OLS\WIN95\UARJ3007

New! ěižò Micco žě

New! "à-e

UNARJ.DLL ,ì Win32 "ÅCUNARJ32.DLL ,Å,·B

New! ftf@fCf<[]\→

UARJ3007 EXE 92,458 96-11-06 21:37
žÀ[]sftf@fCf<

New! UNLHA32.DLL Ver0.65

New!

New! Žů~^fffbfƒfNfgfŠ DISC1:\OLS\WIN95\ULHA3065

New! ĩžò Micco ž

New! “à-e

UNLHA32.DLL , íCLzhE`Ž®, ì^³kE%đ“€ , đ%Â”\ , É , . , é DLL , Å , .B

@UNLHA32.DLL , íCLHA.EXE , đ Windows 3.1 -p, É^ÚA, μ, ½ UNLHA.DLL , đC, ³, ç, É Windows NT “™, R, QfrfbfgŠÂ<« , Åžg-p%Â”\ , È, æ, x, ÉA^ÚA, đs, A, ½, à, Ì, Å, .B-¼‘O, É”½, μ, Å Ver 0.19 , ©, ç, ì^³k, É, à‘Í%ž, μ, Å, ç, Ü, .BWin “Åž©E%đ“€‘EÉ, É, Å, ç, Å, í UNLHA.DLL “-l , , g, ³, ñ, Ìuftf@fCf<f}fL[fWffŠg’fƒfjf... [v, Åì-, ³, è, é, à, Ì, E“-™, Ì, à, Ì, ãì-%A”\ , E, É, Å, Å, ç , Ü, .iWindows <y, Ñ NT “ÅjB

@, È, “CVer 0.25 , ©, ç, í NT <y, Ñ Win95 , Ì, Ý, Å“®ì, μ, Ü, .B Win32s “Å, É, Å, ç, Å, íC. .ª, đ“Y•t, . , éE`‘O, E, μ, Ü, .B”½‘Í, É Win32s “Å, íS(E•t, «, Å, í , , è, Ü, . , ãCNT , â Win95 , Å, à“®ì, μ, Ü, .B(^;)

@UNLHA32.DLL , íŠJ”’t, ìfo[fWf†f“ , Å , , èCAPI “™, É, Å, ç , Å, í; Eã•İX, ³, è, é, ± , E, ãl, |, ç, è, Ü, .BE»Ý, Ì, à, Ì, ãAIE^‘è”Å, Å, í, È, ç, E, ç, x, ± , E, đ\•ª, ²-%đ, Ìã, ²Žg-p, , ¾, ³, çB, Ü, ½CLHA for NT , Ìžd- l, É”º, çC UNLHA32.DLL , É, “ , ç , Å, à‘EÉ<y, Ñfwfbf_E`Ž®CfRf}f“fh, âfXfCfbf`“™, Ìžd- l, ã; Eã•İX, ³, è, é, ±, E, àl, |, ç, è, Ü, .B

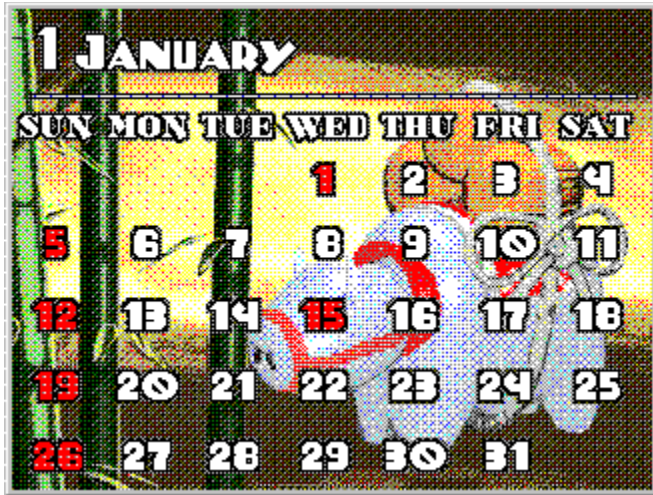
New! ftƒfCf< \ \ -

ULHA3065 EXE 157,272 96-11-06 21:37
ŽÀsftƒfCf<

New! POWER REPORT“Á»fJfEf“f_[] '97 1ĚŽ

New!

New! %æ-ÊfCf[] [fw



New! Žû~^fffbfEfNfgfŠ DISC1:\OLS\WIN31\CAL01_32

New! []žò “;“c []L“ñ With Grandmaster

New! “à-e

DOS/V POWER REPORT“Á»fIfŠfwfif<fJfEf“f_[] [, Å, ·[]B
[];ĚŽ, Í, “[]³ĚŽ, ç, µ, []AŠ±Žx, I%N, °f, f`[] [ft, Æ, Ê, Á, Ä, Ü, ·[]B
fffXfNfgfbfv, Ì•Đ<÷, É, Å, à, Ç, ¨, ¼[]B

, ±, ÌfJfEf“f_[] [, ðfCf“fXfg[] [f<, ·, é, ±
, Æ, É, æ, Á, ÄVisualBasic, Å[]ì[]-, ³, ê, ½fIf“f%fCf“f\ftfg, É•K-
v, ÉDLL, ° ‘g, Ý[]ž, Ü, ê, Ü, ·[]B

New! ftf@fCf<[]\[]-

CAL01_32 EXE 353,792 96-11-25 15:32

New! Dolphin for ,X,T@Ver1.1

New!

New! %æ-Êfcf[]fw



New! Žû~^fffbfçfnfgfš DISC1:\OLS\WIN95\DOLP11

New! []žò ,f,q,`,m,c,l,`,r,s,d,q ž
<http://WWW.alles.or.jp/~mokomoko/index.htm>

New! “à-e

[]@,f,q,`,m,c,l,`,r,s,d,q[]@fxfnfš[]f“fz[]fo[][]Efrfçfnfvf#f“
[]uDolphin for

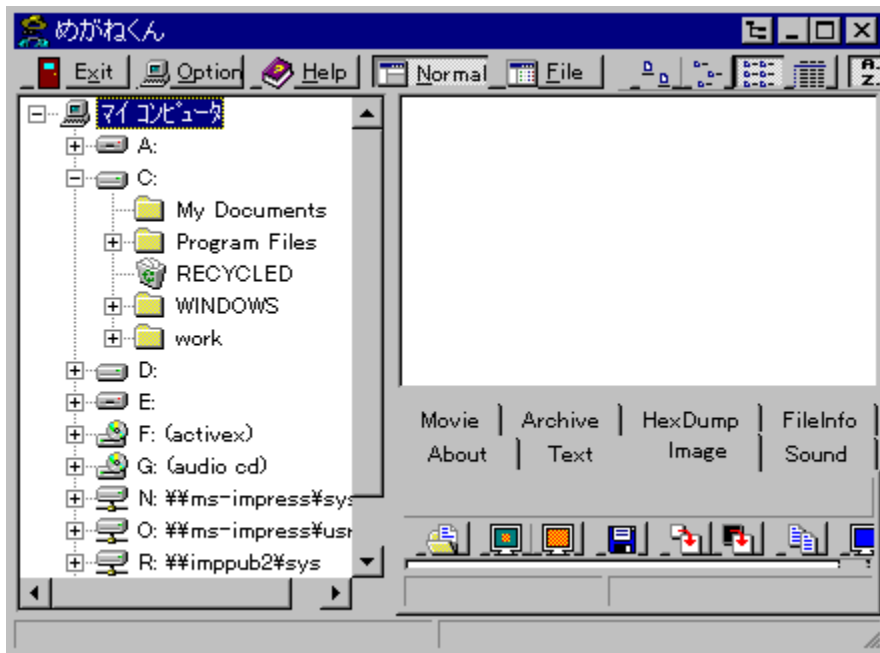
WINDOWS95[]v

[]@,±,±,ñ,Æ,±[]A, ,[][,Á,Æ-Z,μ, -
,Ä[]V[]ì,ì,È,©,Á,½,f,q,`,m,c,l,`,r,s,d,q,ì[]A^ê"N"¼,ô,è,ì[]V[]ì,
Á, ,è,Û,·[]B'0[]X,©,ç[]ì,è,×[]ì,è,×,Æžv,Á,Ä,ç
,Ä[]A, ,[][,Á,Æ[]ì,è,È,©,Á,½fcf<fJ,ìfz[]fo[][,ð[]ì,Á,Ä,Ý,Û,μ,½[]B
[]@-á,É,æ,Á,Ä[]AfEf`,ìf\
ftfg,Á,í,“,È,¶,Ý,ì[]A,R,cfçf“f_fšf“f0,ð<ìžg,μ,½[]ì•i,Á,·[]Bž•
ª,Äç¼,×,ì,à•ì,Á,·,ª[]A,Æ,Á,Ä,à”ü,μ,ç
,R,c,ìfcf<fJ,³,ñ,ª[]A”ü,μ,çšç't,ð,È,ß,ç,©,ÉfAfj[][][fvf#f“,·,
é-l,ì[]A<v[]X,Éç+[]ì,Á,·(“-žĐ”ä(^_^;)[]B
[]@,½,¾,μ[]AfAfj[][][fvf#f“-D[]æ,Ä[]ì,Á,½,ì,Á[]A,È,ñ,Æ[]A%ð“€
,·,é,Æ5f[]fK, ,è,Û,·(^_^;)[]B,È,ñ,¿,×ftfcfY,â(^_^;)[]B,±

New! f}f<f`ftf@fCf<frf...[f[][,β,ª,Ë,,ñ Ver1.21

New!

New! %æ-ÊfCf[]fW



New! Žû~^ffBf@fNfgfŠ DISC1:\OLS\WIN95\MGN121

New! []ìŽò 'Ã“c[], Ž[]

New! “à-e

[]u,β,ª,Ë,-
,ñ[]v,ÍWindows95,“,æ,Ñ“ÆŽ©,ìft>[]fU>[]fCf“f^>[]ftfFfCfX,ðžæ,è“ü
,ê[]AfefLfXfgftf@fCf<,â%æ'æftf@fCf<,Ë,Ç,É“Á
%»,¹,[]A,³,Ü,´,Ü,Ëftf@fCf<,ì“à-
e,ð”ñ[]í,ËŠË'P,Ë'€[]ì,ÅŠm”F,Å,«,éf}f<f`ftf@fCf<frf...
>[]f[][,Å,·[]B

[] “Á'¥

□EfefLfxfg□E
 æ'æ□EftfEf"fhftf@fCf<□E^3□kftf@fCf<,È,Ç□Aftf@fCf<,ìŽí-
 P,ð'I'ð,μ□A
 □@•\Ž|,³,¹,½,çftf@fCf<,ðfNfŠfbfN,·,é,¾,⁻,Å,»,ì"à-
 e,ðŠm"F,·,é,±,Æ,ª,Å,«,Û,·□B
 □@,Û,½□A□u,²,Ý" □v,É,à'Î%Ž,μ,Ä,ç,Û,·,ì,Å,²,Ý" ,ìftf@fCf<,ð"
 ⁻,¶,æ,κ,É•\Ž|,³,¹,é
 □@,±,Æ,ª,Å,«,Û,·□B
 □Eftf@fCf<,ì'I'ð,Æ"à-e,ì•\Ž|,ª,P%æ-
 È,Å,Å,«,Û,·,ì,Å□A^ê~A,ì'€□ì,ª"ñ□í,ÉŠÈ'P,Å,·
 □EfefLfxfgftf@fCf<□A%æ'æftf@fCf<,ð,Í,¶,ß,Æ,·,é-ñ,Q,0Ží-
 P,ìftf@fCf<,É'Î%Ž,μ,Ä,⁻
 □@,è,Û,·□B
 □Eftf@fCf<"à-e,ì•\Ž|,¾,⁻,Å,È,-
 □AfefLfxfgftf@fCf<,ìfI□[fgfXfNf□□[f<□A%æ'æftf@fC
 □@f<,ìftf@fCf<€`Ž®,ìfRf"fo□[fg,È,Ç•\Ž|,³,é,Å,ç
 ,éftf@fCf<,ÉŠÖ,í,é, ,ç,ä,éfc□[f<
 □@,ªŽg-p,Å,«,Û,·□B
 □Efrf...□[f□□[<@"\
 ,ì,Û,©,É□ADrag&Drop,É,æ,éftf@fCf<,ìfRfs□[□E□í□æ,È,ÇWindows9
 5,ì
 □@ft□[fU□[fCf"f^□[ftfFfCfX,ðŽæ,è"ü,ê,½ftf@fCf<'€□ì,â□ALZHÈ`
 Ž®,ì^3□kftf@fCf<,ì
 □@□ì□-□E%ð"€,ª%Å"\,Å,·□B,Û,½□A•\Ž|f,□[fh,ð•ï□X,·,é,±
 ,Æ,ÅfGfNfXfvf□□[f%,ì,æ,κ,È
 □@ftf@fCf<ŠÇ-□f\ftfg,Æ,μ,Ä,à,⁻Žg,ç,ç,½,¾,⁻,Û,·□B
 □E,·,×,Ä,ì'€□ì,ð□Afc□[f<fo□[,Æf|fbfvfAfbfvf□fjf...
 □[,¾,⁻,Å,Å,«,Û,·,ì,Å□A□%□SŽÖ,É
 □@,à,í,©,è,â,·,,É,Á,Ä,ç,Û,·□B



ftf@fCf<□\□-

MGN121

LZH

299,809

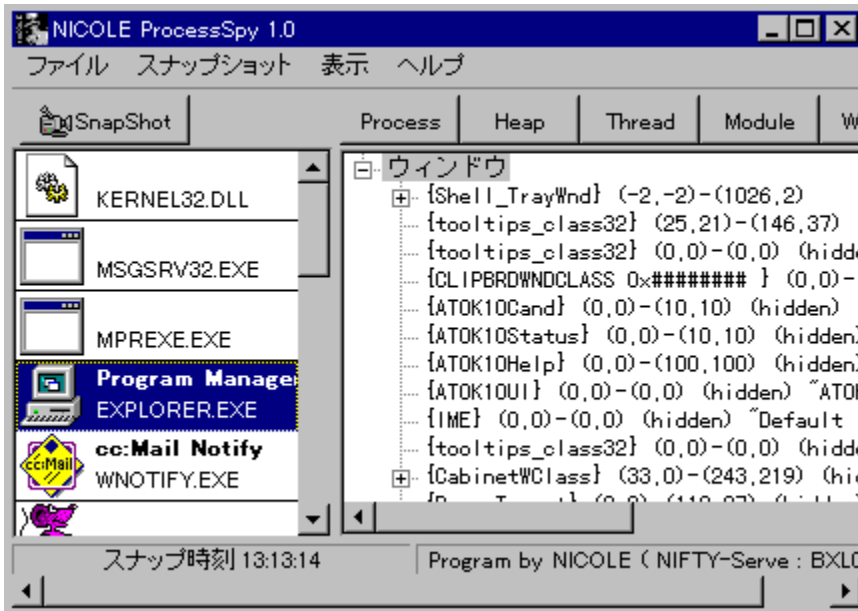
96-12-06

10:11

New! NICOLE ProcessSpy 1.0

New!

New! %æ-ÊfCf□□[fw



New! Žû~^ffBf&fNfgfŠ DISC1:\OLS\WIN95\NPROCSPY

New! □îžÒ NICOLE ž□

New! “à-e

fVfXfef€f□f, fŠ't, É'¶□Ý, ·, é□AŠefvf□fZfX, a□Š-
 L, ·, éfq□[fv□AfXf&fbfh□Af, fwf...□[f<□AfEfBf“fhfE□Af□fjf...
 □[, È, Ç, Ì□ó'Ô, ð"ñ□í, É□Ú, µ, '², x, éŽ-, a, Å, «, Ü, ·□B
 Windows95fvf□f0f%€f, Ìfffofbf0□E%ð□Í, É, “-ð-š, Ä%º, ³, ç□B

New! ftf@fCf<□\□-

Windows95□ã, ÅžÀ□s, ³, ê, Ä, ç, éfvf□fZfX, ÉŠÖ, ·, é-l□X, È□î•ñ, ð•\

Ži, ., éfc[]f<, Å, .
NPROCSPY LZH

149,771

96-11-01

21:39

New! ,É,á,ñ'¾~Y,r,d for ,X,T@Ver1.0

New!

New! %æ-ÊfCf[]fW



New! Žû~^ffBfœfNfgfŠ DISC1:\OLS\WIN95\NYNSE10

New! []ižò GRANDMASTER ž[]
<http://WWW.alles.or.jp/~mokokoko/index.htm>

New! “à-e

[]@,f,q,`,m,c,l,`,r,s,d,q[]@fXfNfš>[]f“fZ>[]fo>[][]EfrfœfNfvf#f“
[]u,É,á,ñ'¾~Y,r,d for
WINDOWS95[]v

[]@-á,É,æ,Á,Ä[]AfEf`,ìf\
ftfg,Å,Í,“,È,¶,Ý,ì[]A,R,cfœf“f_fšf“f0,ð<ìžg,µ,½>[]ì•i,Å,·[]B^È'
0[]A3.1-p,É[]o,µ,Ä,ç,½>[]u,É,á,ñ'¾~Y[]v,Å,·,°[]A,È,É,Ô,ñ[]Ā,-
[]A[];[]œ,é,Æ[]œ,é,É'İ,|,È,ç,Ì,Å[]A'S-Ê“I,Éfšfjf...
>[]fAf<,µ,ÄfXfyfVfVff<fGfffBfvf#f“,Æ,µ,Ä[]¶,Û,è•İ,í,è,Û,µ,½>[]B
[]@fœf“f_fšf“f0,É,Í'S-Ê“I,ÉžžÊfefNfXf`ff,ðžg-
p,µ[]AfšfAf<,Èžd[]ã,°,è,É,È,Á,Ä,“,è,Û,·[]B'`fšfAf<,È”L,Ì“®[]ì,Æ

, È, ß, ç, ©, ÈfAfjjf [fVf#f“, ð, Šy, µ, Ý, , ¾, ³, çB
@ \, µ-ó, , è, Ü, ¹, ñ, ºA'S-
ÈV ì, È, Ì, ÅA'O ì, Æ, Ì“o~^”Ô+ , ÌÆÝŠ· «, Í, , è, Ü, ¹, ñB

@fAfjjf [fVf#f“-Dæ, Å ì, Á, ½, Ì, ÅA%ð“€ , ·, é, Æ3f fK, , è, Ü, ·
@, » , ñ, È, í, -, ÅAf f, fŠ, Ì-
, È, ç} fVf“, Å, ÍXf fbfvftf@fCf< , º•p” -
, ·, é, ©A, Ö, ½, ·, é, Æ^ê”Ê•ÛËì^á”½, ºo, é, ©, à, µ, ê, Ü, ¹, ñ, Ì, ÅA^ê
ž, » , Ì, Ö, ñAŠoÆå, µ, Ä, ©, çf_fEf“f [fh, µ, Ä, , ¾, ³, çB



ftf@fCf< \ -

NYNSE10

LZH

446,693

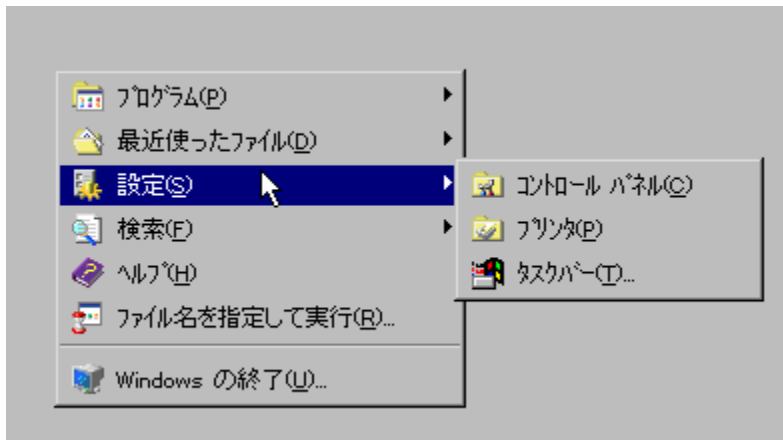
96-11-11

11:39

New! Å½, Ä-Ïß, Å½À°ÄÒÆ°, ðÎß-Ïß±-Ïß POPUP95

New!

New! %æ-ÊfCf[]fW



New! Žû~^fffbfëfnfgfš DISC1:\OLS\WIN95\PU95_101

New! []žžò , ì, ô ž[]

New! “à-e

Popup 95 Version 1,0,0,1,Å,·[]B
fffXfnfgfbfv[]ä, Å[]f_fuf<fnfšfbfN, Å[]Afxf^[][fgf[]fjf...[][, ðf|
fbfvfAfbfv, μ, Ü, ·[]B

New! ftf@fCf<[]\[]-

PU95_101 LZH 31,207 96-11-12 18:57

New! QuickDirectDraw ver 1.0

New!

New! Žů~^ffjBfÆfNfgfŠ DISC1:\OLS\WIN95\QDDRAW

New! ĩžò -x@_s ž

New! “à-e

@DirectDraw ‘Î
%žfAfvfŠ,đ<N“®,·,é,Æ,«,ÉŽžŠÔ,ª,©,©,é,ÆŽv,Á,½ł,Í,¢
,Ü,¹,ň,©H
,»,ň,Èł,Ì,¹/₂,ß,É,±,İf\ftfg,Í, ,è,Ü,·B
,±,İf\ftfg,đí’“,³,¹,é,ÆDirectDraw ‘Î
%žfAfvfŠ,đ<N“®,·,é,İ,^ª‘¬,,È,è,Ü,·B

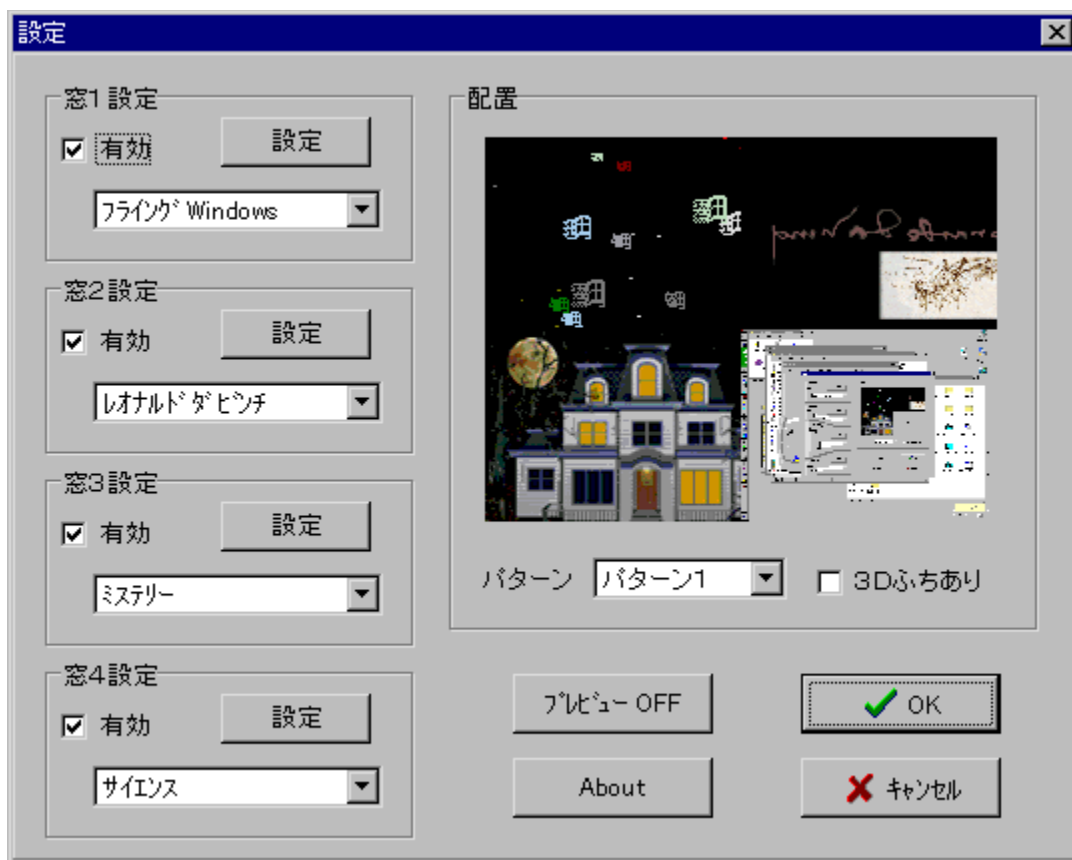
New! ftj@fCf<_ _~

QDDRAW LZH 11,423 96-11-19 2:55

New! fZ[]fo[]infZ[]fo[] for Windows95

New!

New! %æ-Êfcf[]fw



New! žû~^fffbf&fnfgfš DISC1:\OLS\WIN95\SVRINSVR

New! []iž0 ,¾[][,μ,ã[]I ž0

New! “à-e

%æ-
Ê, ð[]Á'ã,S,Â,Ü,Á•aš,,,μ[]A•aš,,,μ,½,»,ê,¼,ê,Ì't,Á•Ê[]X,Ìfxfnfš[]

f“fZ[]fo[][,đ<N“®,·,é,±,Æ,ª,Å,«,Ü,·□B

‰æ-Ê,Ï•ªŠ,,fpf^[]f“,Æ•ªŠ,,μ,½-Ï^æ,Ï
‰□,Ï, ,è,È,μ□A<N“®,·,éfZ[]fo[][-¼,đ□Ý'è,Å,«,Ü,·□B

New!

ftf@fCf<□\□→

SVRINSVR LZH

129,082

96-11-14

18:54

