

WigWam 2 - MultiUser Guide

Ashmount Research Limited

Contents

Welcome to WigWam 2 9

a) About the WigWam 2 Documentation

9

b) New in Two

10

General 10

Administration 11

Internal Comms 11

c) Ashmount Product Support

11

d) Licensing Terms and Conditions

12

e) Demonstration Version

12

f) Registration

12

Chapter 1 Installing WigWam 2 13

1.1 Before You Start 13

a) WigWam 2 Requirements

13

b) System Requirements

14

c) Make an Installation Disk

Contents 3

14
d) Choose a location for WigWam 2

14
e) ID & Password

1.2 15 Ready to Start 15
a) Run Setup

15
b) Install Supplementary Files

15
c) Upgrading

16
d) Upgrading from WigWam 2

16
e) Moving WigWam

17
f) Creating Program Icons By Hand

1.2 17 Setting Essential Options 17
a) ID & Password

17
b) Communications Settings

18

Phone 18
Port 18
Modem 18

Contents 4

Problems? 19

c) Upgraders - first run

19

1.3 Basic Installation Complete 19

**Chapter 2 Configuring WigWam 2
20**

2.1 Administrative Options 20

a) Set Reading Order

21

b) User Options

22

Auto Features 22

Appearance 23

Message Display 23

Password 24

c) Service Setup

25

File Locking 25

Single Script 25

Self Registration 25

Encryption 25

Network 26

Virus Scanner 26

Service 26

Other Settings 26

d) Communications Settings

27

Service 27

Connection Type 28

Rate 29

Contents 5

Parity, Word Size 29
Automatic 29
Port 29
Modem Control 30
Dial String 31

e) Prune Options
32
f) User management
32
g) Modify Forum/Conference
32
2.2 Changing the Look of WigWam 2 33
a) Changing Colours
33
b) Changing the Fonts
34
c) The Message Font
35
2.3 Customising the Screen 36
a) Show Toolbox
36
b) Show Toolbar
36
c) Show Status Box
36
d) Show Status Bar

Contents 6

37
e) Other Screen Design Controls

Chapter 3 Connecting 38

3.1 Connecting to CompuServe 38
a) Setting CompuServe Options

38
b) Joining Forums

39

Which Forum? 40

Visitor Announcement/Newsflash 40

Problems Joining? 41

c) Choosing Sections to Download

42
d) Resigning Forums

44
e) Normal Connect

44

Manual Connect (Keyboard Shortcut Ctrl-Q) 44

Full Download (Keyboard Shortcut Ctrl-T) 45

Selective Download (Keyboard Shortcut Ctrl-O) 45

Scheduled Full Download 45

f) Downloading Message Headers

3.2 Connecting to CIX 48
a) Joining Conferences

48
b) Viewing the Conference List

Contents 7

48
c) Updating the Conference List

49
d) Joining a Conference when you know its Name

49
e) The Join Itself

49
f) Message Pointers

50
g) Normal Connect

50
Full Download (Keyboard Shortcut T) 50
Selective Download (Keyboard Shortcut Ctrl-O) 50
Manual Connect (Keyboard Shortcut Ctrl-Q) 50
Scheduled Full Connect 50

h) The Connection

50
3.3 Connecting to CIXNEWS 52

**Chapter 4 Reading and Writing Messages
55**

4.1 Moving around the Message base 55
a) Threads

56
b) Message Viewer Panels

56
c) Message View Modes

Contents 8

	57	
View Threads	57	
View Roots Only	57	
View Chronologically	57	
		d) Next and Previous
	58	
		e) Changing the Reading Order
	58	
		f) Goto
	59	
		g) Original
	59	
		h) Undo
	59	
4.2	Marking Messages	60
	a) Marking Messages Read/Unread	
	60	
		b) The Skip Command
	60	
Skip Current Thread	60	
Skip to First	60	
Skip to Last	61	
Skip to Message Number	61	
Skip Back	61	
		c) Bookmarks
	61	
Placing a Bookmark	61	

Contents 9

Viewing Bookmarks	61
Mark Bookmarks	62
	d) Marking Messages for Deletion
	62
	e) Marking Messages for Keeping
	62
	f) Ignoring Threads
	63
	g) Searching for Messages
Find	63
Search	63
	h) Message Icons
	64
	i) Filing and Printing Messages
	64
4.3	Writing Messages and Replies 65
	a) Comment, Say/Reply, Compose
	65
Section, Reply (Topic, Comment)	65
Section, Compose (Topic,)	66
Mail/Send Mail	66
	b) Working with the Message Editor
	66
	c) Posting Formatted Messages (CIS only)
	67
	d) Posting Private (CIS Only)

Contents 10

68
e) Message Signatures

68
f) Withdrawing Messages

69
g) Show Replies/Show Comments

69
h) Reviewing Messages before Upload

4.3 69 Mail 70
a) Sending and Receiving Mail

70
b) Receiving Mail Messages

70
c) Replying to Mail Messages

70
d) Originating Mail Messages

71
e) Sending and Receiving Binary Mail

71
f) Managing your Cix Mail Folders

Clear Read Mail 73

72
g) Fax

Contents 11

	73	
4.4	The Address Book	74
	a) Displaying the Address Book	
	74	
Adding an Address	75	
Editing an Address	76	
	b) Using Address Book for Mail	
	76	
Sending a Mail Message from the Address Book	76	
Using the Address Book from the Message Editor	76	
	c) Accessing the Address Book Outside WigWam 2	

Chapter 5 Handling Files 77

5.1	Libraries on CompuServe	77
	a) Downloading A Library List	
	77	
	b) Viewing A Library List	
	78	
	c) Downloading a Known File	
	78	
	d) Uploading a File	
5.2	File Lists on CIX	79
	a) Downloading A File List	
	79	
	b) Viewing A File List	

80

Contents 12

c) Downloading a Known File

80

d) Uploading a File to a Topic

80

Chapter 6 Housekeeping 81

6.1 Keeping Control of the Message Base 81

a) Pruning By Age

81

b) Prune Options

81

Adding a Forum/Section (Conference/Topic) 82

Changing Prune Settings 82

Messages Marked for Deletion 83

Messages Marked for Keeping 83

c) Running Prune

83

d) Deleting Forums or Sections (CIS)

83

e) Deleting Conferences or Topics (CIX)

84

6.2 Message Base Information 84

Show New Messages 84

Show Moderators 84

Show Joined Forums/Conferences 84

Show Unjoined Forums/Conferences 84

Show All Forums/Conferences 85

Show Forum/Conference Information 85

6.3 Rebuilding the Message Base 85

Contents 13

6.4 Resynchronising with the Remote Service 86

a) CompuServe

86

b) Cix

86

Chapter 7 More WigWam 2 Features 89

7.1 General Features 89

a) View/Edit Any File

89

b) Notes

89

c) Review

90

d) Show Pending

90

e) Involvement Threads

91

f) Key Macro

91

Macro Buttons 91

Caution with Macros 92

g) Modify Forum/Conference

92

Read Only 92

Contents	14		
Moderate	92	7.2	More Features for CompuServe 93
			a) The High Message Number (HMN)
			93
			b) Modifying the HMN
			93
			c) Running a Script Command
			94
			d) Supplied Script Commands
			95
Weather Maps	95		e) Built-In Scripts
		7.3	More Features for Cix 96
			a) Resumes
			96
View	97		
Get	97		
Delete	97		
Edit	97		
			b) Billing
			97
View	98		
Get	98		
			c) Extended Script Commands
			98
			d) Extended Mail Commands

Contents 15

		101	
		e) Moderating Conferences	
		102	
File List	103		
File Directory	104		
Files	104		
Information	104		
		f) Other Moderator Commands	
		104	
		g) FTP	
		106	
7.4	Cixnews		107
	a) Newsgroup headings		

Chapter 8 Terminal & Processing Downloads 110

8.1	WigWam Terminal		110
	a) Using Terminal in Manual Mode		
		110	
	b) Flow Control		
		110	
	c) If Something Goes Wrong Online		
		111	
	d) The Capture Files		
		111	
	e) How to Avoid telling WigWam 2 your Password		

Contents 16

111
f) Logging on from Unsupported Networks (CIS)

112
g) The Usage Log

112
8.2 The Message Converter (CIS only) 112
a) Running the Converter

113
b) Converting a Tapcis Message File

113
8.3 Import Messages (Addcon) 114
a) Import Settings

114

Service 114
Mail Name 115
Filename 115
Bix 115
GreenNet 115
Logging 115
Insert Messages 115
Strip Header 115
Full Thread 115
Usenet 115
Single Group 116

b) Adding Tapcis Messages to the WigWam 2 Message Base

116

Appendix A

117

File,

Command Summary

Contents 17

Edit,	117
View,	118
Actions,	120
Forum/Conference,	121
Section/Topic,	123
Mail,	125
Tools,	127
Key Macro,	127
Admin,	127
	128

Appendix B How It Works 131

The .INI File

131

The Storage of Pending Actions

131

Online

132

Problems with CompuServe 132

Help us to help you 132

Pre-processing of CompuServe messages

133

Processing the Captured Messages

133

If messages are not reaching CIS.OLD 133

Contents 18

Check that you are registered in the forum/section (conference/topic) 134

The Message Base

134

TP.INI

136

ASHMOUNT.INI 136

TP.INI 136

Separating Data and Program Files

139

Maintaining Parallel Messagebases

140

Appendix C Script Language 143

The Script Language

143

C.1 Logon Scripts 144

C.2 Special Function Scripts 146

The Capture File and Dummy Messages

146

Converting a Tapcis Script (CIS)

149

Script Parameters

149

Running Your Script

149

%Commands

150

Contents 19

Command Name : %a	151
Command Name : %b	151
Command Name : %c	152
Command Name : %d	152
Command Name : %e	152
Command Name : %f, %F	153
Command Name %h	153
Command Name %i	154
Command Name %I	154
Command Name %l	155
Command Name %L	155
Command Name %m	155
Command Name %n	156
Command Name %s, %S	156
Command Name %t	157
Command Name %u	157
Command Name %w	158

Index 159

Copyright © 1992,1993,1994 Ashmount Research Ltd. All Rights Reserved.

Welcome to WigWam 2

Welcome to WigWam 2, the Windows-based program designed to make electronic on-line conferencing easier, and dramatically reduce your telephone and connect charges, by enabling you to do most of the work off-line.

This introductory section of the User Guide provides a guide to the documentation, summarises the equipment necessary to run WigWam 2, and outlines Ashmount's product support services.

a) About the WigWam 2 Documentation

The documentation set consists of this Manual, a Help system, and the document README.WRI, which is formatted for use with Write.exe.

The Manual explains how to install and use WigWam, and contains technical information on the way that WigWam can be extended for use with unsupported networks and CompuServe features.

The Online Help system contains much of the material covered in the Manual, which is primarily organised as a 'reference book'. If you wish to understand the way that WigWam handles a particular feature of CompuServe, such as Forum messaging, for example, you should consult the Manual. If you wish to check the exact operation of a particular command, it may be faster to refer to Online Help.

The file README.WRI contains important information which was not available at the time of going to press. As WigWam is constantly being improved, please check the README in the package you have received, for installation advice and for new features.

b) New in Two

WigWam 2 offers a number of significant improvements on previous versions.

General

Bookmarks - up to ten Bookmark Sets. Bookmarks can be set individually, or as "hits" in a Search.

Involvement threads - threads containing messages from you will be coloured differently

Ignored threads - threads in which you have no further interest will not be shown to you for reading, even when new messages are added to them.

User definable colours - you can choose the colouring of different kinds of threads, messages, background and foreground.

User definable fonts for all screen elements - and for printing. There's also a proportional/fixed font toggle.

Ctrl+Z backtrack through read messages - Undo

Resign/Delete made simpler

Signatures are editable and configurable - different signatures for each service, and for mail.

Handles a much bigger message base - up to 2,000 sections (topics), with up to 32,000 messages each

CIS Mode/CLX Mode - users accustomed to working in the vocabulary of one service can choose to view everything in that way.

Billing accessible from inside WigWam

Contents **21**

New, more flexible interface for Addcon (Import Messages)
Search/Find functionality is improved - "hits" from a search are bookmarked. You can then search that bookmark set only, thus narrowing your search, progressively.
Improved printing functionality - you can now control the printer font/fontsize, and the left printer margin.
Review facility is now much more powerful
Say/Comment/Mail dialogs enhanced
Improved keyboard interface - much more use of single press keystrokes
8-bit character support - allows access to the full character set
Handles mail/messages just like any other topic for files (CIX only)
Resumes can be managed within WigWam 2 (CIX only)
Integrated flists and moderating features (CIX only)
Integrated billing facility (CIX only)
Improved Library-handling - much easier refreshing (CIS)
Integrated fax facility
Much better binmail
CIXNEWS - full Support for new Newsnet read/write interface (for CIX subscribers)
Smooth upgrade path from WW to WW-multi to PowWow if required - with additional modules available for other services
New help file
New manual

Administration

Prune/Purge combined for ease of use
Set prune configuration interactively - topic by topic (section by section)
Single-topic (section) pruning
Timed prune
Allows build of a single topic

Internal Comms

Multiple communications settings - up to ten settings. Plus a multi-phone option, allowing the cycling of phone number *within* each communication setting if a connection fails
Scheduled connections - set up a connect after a chosen delay
Access to virus scanning
New script commands and greater flexibility in the script language

c) Ashmount Product Support

WigWam 2 support is available from Section 10 of the UKCOMP forum on CompuServe, from the WIGWAM2 conference on CIX (and other Ashmount conferences), or directly from Ashmount Research via telephone or fax. As we are a small company,

WigWam for CompuServe

Contents 22

our preferred method of providing support is via the CompuServe forum, but if your problem is urgent, please call or fax instead.

Our telephone number is +44 71 935 7712

Our fax number is +44 71 935 7713.

Our CompuServe ID is 70007,5437

Our Cix ID is ashmount

In some countries, support may be available through a local agent or distributor.

d) Licensing Terms and Conditions

WigWam is commercial software. It is not free. Copyright in the software and documentation is retained by Ashmount Research.

WigWam is supplied to the user under license on the following terms:

The software is licensed for a single user.

The user does not become the owner of the software, but has bought the right to use the software.

No warranties of any kind are made with respect to the contents of the software or its use or fitness for any particular purpose. Ashmount Research Limited and its agents shall not be liable for errors found within or be liable for any direct, indirect or consequential damage or loss of profits in connection with the use of the software or manual.

By using the software the licensee indicates his or her agreement to the terms above.

e) Demonstration Version

A demonstration version of WigWam 2 is available for download from CompuServe or Cix, as is a copy of the manual. The demonstration version is complete apart from one command, **Prune**, which is not included. You are free to use the demonstration version in order to evaluate WigWam 2, but you must only use it for a maximum of 14 days. After that you must either delete it from your system, or register the software with Ashmount Research. On receipt of your registration you will be sent a printed copy of the manual, and a full copy of the software on disk. You will also be entitled to receive updates to the software free of charge or at a reduced price, at Ashmount's discretion.

f) Registration

The README file accompanying the demonstration version provides current registration details. You can register WigWam 2 by VISA, Access (Mastercard), or CompuServe's Shareware Registration Service. For further details, please consult the README.TXT file, or contact Ashmount (look under *Product Support* above for contact details).

Chapter 1 **Installing WigWam 2**

The chain of connection between your computer screen and the host machine is long and complicated. Several of the links in this chain involve your own machine. WigWam's installation procedure will do its best to ensure that these links are properly formed. Please take some time to go through this process carefully; it will save time in the long term.

1.1 **Before You Start**

a) WigWam 2 Requirements

WigWam 2 requires a computer running Windows 3.0 or later in Standard or Enhanced mode (Real mode is not supported). A minimum of 2MB of RAM is recommended. WigWam 2 occupies a minimum of 2MB of disk-space for the program alone. You are likely to collect a large local database of messages, so even more disk space would be required.

To use WigWam 2 to connect to your service, you will need a modem or network connection that supports 'hardware' (i.e. RTS/CTS) flow control, and is capable of interpreting dial commands sent from WigWam 2 (all 'Hayes compatible' modems, and most others, will be satisfactory in this respect). If you wish to use a high speed modem (9600 baud or above), you may need a 16550 buffered UART connected to your serial port, to optimise the flow of data through that port. Buffered UARTS only provide additional benefit under Windows 3.1, as there is no specific support for them in Windows 3.0.

This WigWam 2 documentation assumes that you have a basic understanding of Windows operation and terminology. As much as possible, WigWam 2 conforms to the Windows way of operating.

b) System Requirements

Ensure that you know what modem you are intending to use, and which Com Port it is connected to. Ensure that the Com Port is set to accept Hardware Flow Control (this is set in the Control Panel, Ports section).

c) Make an Installation Disk

If you have downloaded WigWam 2 from a bulletin board, first make an installation disk by unpacking the file that you downloaded onto a floppy disk, or into a clean sub-directory of your hard disk.

d) Choose a location for WigWam 2

By default, WigWam 2 will install itself onto your hard disk, in a directory named **\WWMULTI2**. This directory will be created if necessary. It will also create sub-directories for each of the services you will be using. You may choose another location for WigWam 2 if you wish, but the subdirectories must follow. Please ensure that WigWam 2 is installed into an otherwise empty directory, which does not have any pre-existing subdirectories. Do not create any other sub-directories in the main directory or the sub-directories. These would confuse the program, which would try to process those directories as if they were services or messages. (For the technically minded, directories beginning with a percentage sign (e.g. \%mydir) are acceptable. The WigWam 2 Installation will create a number of sub-directories like this.)

Users who are upgrading from a previous version of WigWam, TP or PowWow should take care not to assume that the same directory can be used again. If you are upgrading from TP-Net or PowWow, then the same directory structure can be used, and the installation procedure will be relatively simple, involving a simple Build of the message base(s) to bring them into line with WigWam's file structure. You will not be able to run WigWam 2 and Tp-Net 1.xx in parallel.

Contents 24

Those upgrading from WigWam 1.xx or TP 1.xx should install to a fresh location. Your installation package contains a file called UPGRADE.EXE, to pull your old messages into WigWam 2. More about this later.

e) ID & Password

Have your ID (or nickname) and your password ready - for each of the systems you intend to use. You will need these later.

1.2 Ready to Start

a) Run Setup

To install WigWam 2, insert the installation disk into a floppy drive and run the Setup program.

1. Start Windows
2. Select **Run Program** from the Program Manager **File** menu
3. Enter '*X*.SETUP', where *X* is the drive letter of your floppy drive
4. Press the **OK** button.

Setup will prompt you for the directory in which to install WigWam 2. The directory will be created if necessary.

After copying the files, Setup will ask you whether you wish a new Program Group to be created for WigWam 2. You should answer yes, unless you are upgrading or you are running a Windows shell (an alternative to Program Manager) which does not support the dynamic creation of Program Groups.

Once the Program Group is created, Setup will inform you that the installation has completed, and will offer you a chance to read the README.WRI file, which may contain special information not available at the time of printing this manual.

b) Install Supplementary Files

If you are running Windows 3.0, please check that the files COMMDLG.DLL and WINHELP.EXE are present in your Windows system directory and are dated the same or later than those supplied on the installation disk (the installation procedure checks for these). WigWam 2 requires these files to be present in the Windows directory, and you should copy them from the installation disk, or download them, if necessary.

If you are running Windows 3.1, there is no need to check as the files are supplied as part of Windows 3.1. There have been some problems reported with third-party replacements for Windows modules, particularly CTL3D.DLL. Please ensure that you have the most recent version. There is a copy on the WigWam 2 distribution disk.

c) Upgrading

To upgrade from an earlier version of WigWam you should first install the new system in a new directory (e.g. C:\WWMULTI2\), following the steps described above. Then, to convert your message base to the new multi-service format you should run the UPGRADE.EXE program. This will present you with a dialog asking you for your old message base directory and for the new directory (e.g. C:\WWMULTI2\).

If you are short on disk space, you should set the 'Delete old files' option. This will delete the old message files whilst it is copying. However, this option means that the process is irreversible. If you can afford the disk space, leave this option un-set (the new installation will take up about as much space as the old one), allowing you to take time to ensure the new system is working to your satisfaction, before deleting the old one.

With the "Delete old files" option checked, the upgrade procedure will still need some disk space. The process upgrades Topic by

WigWam for CompuServe

Contents **25**

Topic or Section by Section, so you will need free space twice the size of your largest Topic/Section.

To save time and space, you might consider pruning *before* upgrading. It is also best to read all outstanding unread messages and to clear all outgoing messages before upgrading.

d) Upgrading from WigWam 2

To upgrade from previous versions of WigWam 2 (or PowWow 2) simply point Setup at your WigWam directory and let the program install over the top. You should read all unread messages, and upload all outgoing messages, before re-installing.

WigWam should retain your previous settings (but check them, in any case). You will need to accept a build of your message base, since changes are frequently made in the indexing and threading procedures. CIS users should run **Set CIS Options** on the **Actions** menu before connecting for messages, as CompuServe changed the menu options during development of WigWam 2.

e) Moving WigWam

If you wish to move WigWam to a different location on your hard disk once it has been installed and used, you should first use XCOPY /s to copy all WigWam's files and subdirectories, and then follow the procedure for upgrading (consult your MSDos manual for details of XCOPY). This will ensure that all of WigWam's parameters are set up to take account of the new location.

f) Creating Program Icons By Hand

If you need to create program icons by hand, for example because your Windows shell does not allow you to use Setup to create a program group, please create icons for WWNET.EXE and CNVRTW.EXE (for use with CompuServe messages), both of which will be found in the directory in which WigWam 2 was installed. N.B. Users of previous versions of WigWam should note that the Addcon and Terminal functions are now internal to WigWam, so you should *remove* those icons from your old Program Group. Please also refer to the file README.WRI, which contains important updates to this manual.

Upgraders should *remove* icons for Addcon, as this is now an internal process which will not run independently.

1.2 Setting Essential Options

For upgraders, the installation procedure should pick up your old settings and re-use them.

For new users, there are a number of configuration options which must be set before you go any further.

a) ID & Password

At this point, you should double-click on the WigWam 2 icon to start the program. You will be asked for the ID (or nickname) and password you use to log on to each of your services. The password will not appear on the screen, so that you can keep it secret, so take care to enter it *exactly* as you would if you were on-line. (bear in mind that most password routines are case-sensitive).

This, of course, means that you must already have an account on the service you intend to use via WigWam 2.

b) Communications Settings

WigWam 2 needs to know about your comms setup. We have made a number of (intelligent) guesses about these, but you should check each of the boxes to see if they match your knowledge of your system. WigWam 2 offers the opportunity to create up to ten different Communications Settings. The various elements of the Communications Settings dialogs will be explained in more detail in the next chapter, but, for now, there are three items which need to be covered (you only need one Communication Setting to get started):

Phone

Contents **26**

This is the phone number of the service. WigWam 2 now has a **Multi-Phone** function which allows you to enter a series of alternative phone numbers in this box, separated by semicolons (e.g. 0123456789;9876543210). When you initiate a connect, the first one of these will operate. If that fails, Terminal will try the second. And so on. You can include any special prefixes to the phone number here, (e.g., dialling 9, to obtain an outside line), or you can add them to the Dial String (e.g. ATDT9,).

CompuServe numbers are often assigned to different modem speeds, so be careful with multi-phone strings in these cases. You will need a different Communication Setting for each. (See next Chapter *Configuring WigWam 2*).

Port

After a new installation, the Port will be set to Com1. If your system is different, change this.

Modem

WigWam comes supplied with a number of initialisation strings for popular modems. If your modem is not listed here, select the appropriate generic setting. This will probably be good enough to get you connected. Once you've made contact, other WigWam users should be able to suggest improvements. The next chapter will explain some of the principles of initialisation string commands.

NB. The **Speed** section refers to the speed at which your computer connects with your modem, not the modem-to-host speed. Generally speaking, this should be set a notch or two higher than the modem-to-host connection speed.

Problems?

If you have any doubts about any of the settings in this dialog, or if you are determined to get everything right first time, please turn to the next chapter, where Communications Settings are discussed in more detail, along with all the other configuration options.

c) Upgraders - first run

You should have transferred your old messages to the new installation, unless you were upgrading from PowWow or TP-Net. The first time you run WigWam, it will ask you whether the message files should be rebuilt. You will not be able to use the program until this is done. Press Yes to rebuild the files, or No to quit the program (in which case you will be asked the same question the next time you start WigWam). **NB.** Depending on the size of your message base, a Build may take some time.

1.3 Basic Installation Complete

If you are in any doubt about any of the above, consult the next chapter, *Configuring WigWam 2*. The process of connecting to a remote service is complicated, and our guesses about your requirements may be quite wrong. Most of the possible adjustments can be configured in WigWam 2, and there are many.

That chapter also contains information on how to configure the "look" of WigWam 2 and your personal preferences for working through your messages and files.

If, however, you are impatient to connect, and you are reasonably certain that the installation was successful, you can skip to *Chapter 3, Connecting*. Please return to *Chapter 2* later, or you'll miss out on some of WigWam's best features.

Chapter 2 **Configuring WigWam 2**

Please note that WigWam's menus are designed to reflect the vocabulary of the service you are using at the time. There is a Cix Mode which speaks of Conferences and Topics and File Lists, and a CIS Mode, which deals in Forums and Sections and Library Lists. To a great extent, these terms are interchangeable, but in the "wrong" mode, some commands may be confusing. These modes are designed to allow users to treat several services in the same way, and to choose which method suits them best, perhaps because they learned their conferencing on one system and find it difficult to switch vocabularies to use another.

In this chapter and elsewhere, Commands or Options which are only relevant to one service will be explained in the language of that service. Other more general Commands will be dealt with in both (where possible). This may lead to some clumsy prose, but the meaning should be clear. We hope that partisan, single-service users will forgive the intrusion of "foreign" material!

If WigWam 2 is offering you access to a service which you do not wish to use (and have no intention of using in the future), you can remove that service from all selection boxes by deleting the relevant sub-directory. That is, if you do not want to see anything more about CompuServe, delete the CIS sub-directory and its contents (you can also delete CIS.EXE, if you wish). You may have to repeat this process if you re-install WigWam 2, perhaps with an upgrade.

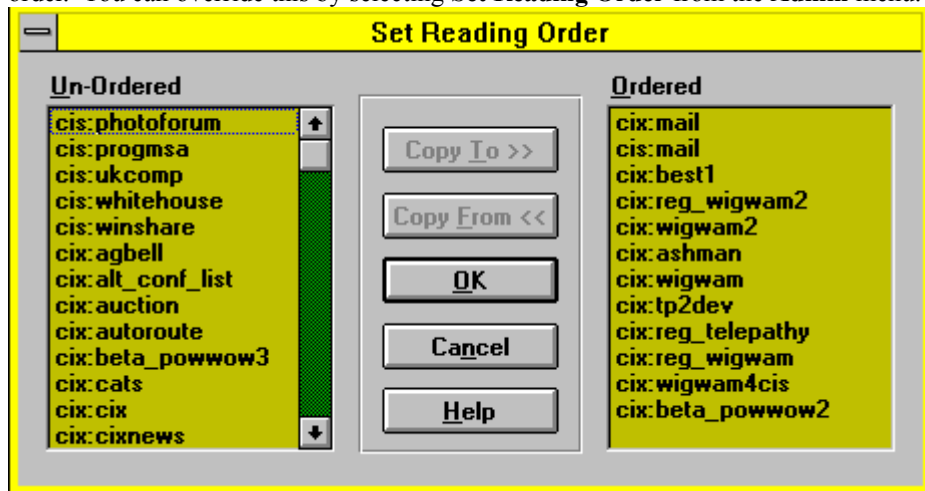
For more on CIX/CIS Mode, see below, **User Options**.

2.1 **Administrative Options**

Grouped under the **Admin** menu are a number of commands to configure the way in which you wish to use WigWam 2.

a) **Set Reading Order**

As you read through your unread messages, WigWam 2 will usually switch from one Forum/Conference to another in alphabetical order. You can override this by selecting **Set Reading Order** from the **Admin** menu.

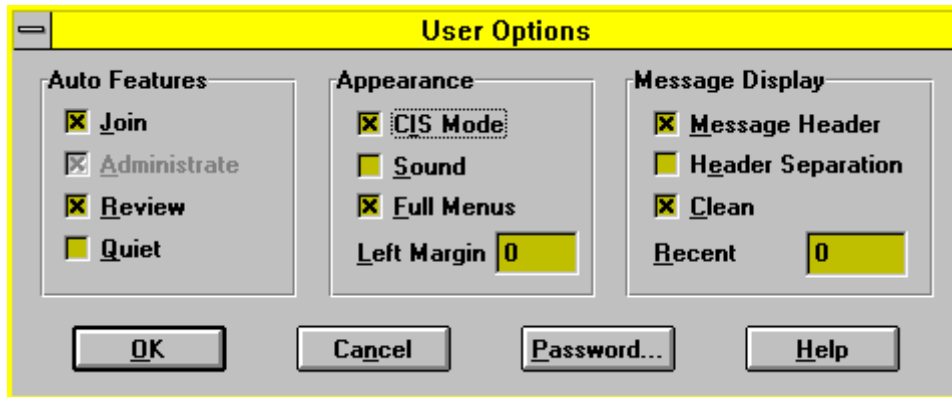


Contents 28

The Set Reading Order dialog displays a list of 'ordered' Forums (or Conferences) on the right, and 'unordered' Forums (or Conferences) on the left. When running through unread messages, WigWam 2 will first work through the 'ordered' list, in the order shown, and will then work through the 'unordered' list, again in the shown order. You can move an item from the 'unordered' list to the bottom of the 'ordered' list by highlighting it and pressing **Copy To**. If you have also highlighted a Forum/Conference in the "ordered" list, the new item will be added below it. Likewise you can remove a Forum/Conference from the 'ordered' list by highlighting it and pressing **Copy From**. Using Shift-click allows you to move blocks of Forums/Conferences at one go.

WigWam 2 will always display unread messages from all Sections in a Forum (Topics in a Conference) before switching to another Forum. It is not possible to alter the order in which Sections/Topics are displayed within a Forum/Conference.

b) User Options



Many aspects of WigWam 2 can be configured to suit your personal preferences. Some of these options can be set in the User Setup dialog, which is reached by choosing **User Options** from the **Admin** menu. Each option has been pre-set for "normal" operation.

Auto Features

Join

When checked, this option ensures that newly-joined conferences/topics (Forums/Sections) will be available for you to read. If unchecked, new material will still be downloaded, but won't appear on screen automatically. There may be material you don't want other people to read.

Review

When checked, WigWam 2 will give a "last chance" to review your actions, before you connect to the service.

Quiet Mode

Contents 29

By default, WigWam 2 will display 'are you sure?' messages before beginning long or critical operations. Checking this option will inhibit such messages. It will also force the Terminal and Import Messages windows to be minimised. We would advise you to leave this option un-checked, at least until you are sure that connections are proceeding satisfactorily.

Appearance

CIS Mode

For CIS users who are accustomed to the CIX way of doing things, unchecking this box reconfigures accordingly. Or, vice versa. Be warned that this will alter many of the menus. The menus will still be appropriate to the service you are presently dealing with; inappropriate commands will be greyed out (unavailable).

Sound

Checking this box causes WigWam 2 to beep when displaying a status message.

Full Menus

Un-checked, the menus are simplified, with some of the more advanced options hidden.

Print (Left Margin)

This enables the user to set the left margin used when WigWam 2 prints (by a given number of characters). Some printers try to print beyond the left margin; this field will allow you to compensate.

Message Display

Message Header

When checked, the Message Header of the current message appears at the top of the Message Window. Leaving this un-checked gives a little more screen space.

Header Separation

Adds a blank line between the Header and the Message body in the Message Window - for clarity.

Clean Display

Removes the horizontal scroll bar in the display, for users whose screens can accommodate a full-width message without scrolling.

Recent

Recent can be used to limit the size of the thread list, which can speed up the thread display in sections/topics with large threads. (WigWam 2 has to do a great deal more processing than before - dealing with Involvement Threads, Ignored Threads etc.) The default here is 0 (zero), which switches this feature off. Setting Recent to 1000 would force WigWam 2 to treat all sections/topics as if there were only 1000 messages in each.

Password

This button will bring up a dialog which will ask you for your *Nickname* (ID) and your *Password*. The password will not appear on the screen as you type, but asterisks (****) will appear instead. These are the *local* ID and password, and have nothing to do with your ID and password on CIX or CIS.

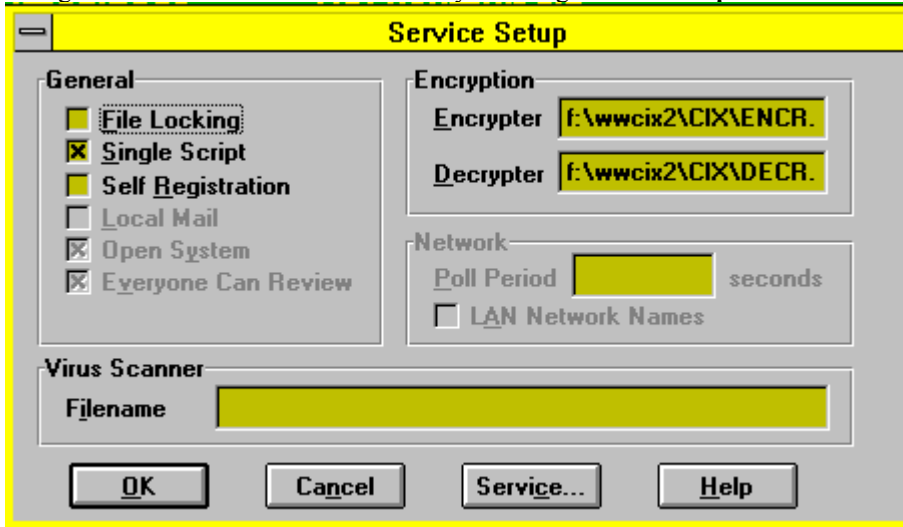
This button is intended for use with multi-user versions of the program, but it is possible to set a command-line ID and password to keep prying eyes away from your messages. You may set the ID (or nickname) via **Admin, User Management**, and the password via this button.

Contents 30

Thereafter, you must run WigWam 2 by entering WUNET.EXE <nickname> <password> in the Properties field of the WigWam 2 program item (or in the Run dialog).

c) Service Setup

You will not normally need to alter the settings in this dialog, but we will deal with them, for completeness. The Service Setup dialog is reached from the **Admin** menu by selecting **Service Setup**. The fields are as follows:



File Locking

Should be unnecessary, since WigWam 2 should not need Share to be loaded. But if you are having trouble with Share violations, changing this item might help.

Single Script

Only applicable to multi-user versions.

Self Registration

Only applicable to multi-user versions.

Encryption

WigWam 2 supplies Encryption/Decryption programs for secure communications - ENCR.EXE & DECR.EXE. Obviously, these will only be useful if those with whom you are communicating have the same utilities. These will be installed in the installation directory (e.g. C:\WWWMULTI2\). You may replace these with your own programs. Bear in mind that the supplied programs are DOS-based, so encryption/decryption will take place in a DOS box.

Contents 31

Network

This section is for network use only. WigWam 2 can easily be upgraded to PowWow², Ashmount's networking application. This option would then become appropriate.

Virus Scanner

If you wish to scan downloaded files for virus infection, put the full path of your scanner in this field. The scanner will check all file downloads. Ideally, the scanner should be a Windows product. If a DOS scanner is called, WigWam will be forced to shell to DOS after each downloading session. If you are using MSDos 6, consult the manual concerning its virus scanning facilities.

Service

It is advisable, occasionally, to change your password on a remote system. Pressing this button allows you to change your password, as it is sent to the remote service, to match the new one. This will *not* change the remote password; you will need to do that by contacting the service administrators ("GO PASSWORD" on CIS, "password" at the Main prompt on CIX).

Other Settings

The other settings on this dialog, which should remain greyed out in your installation, refer to the multi-user version, PowWow².

d) Communications Settings

You should already have seen this dialog box during installation, but the choices here deserve some more detailed explanation. To reach the communications settings, select **Communication Settings** from the **Admin** menu.

The communications options are grouped in several areas as outlined below. Work your way through each group in turn, and set the options accordingly.

Service

The settings in this group are used as follows:

Name

Meaning

UserID

Your nickname on CIX, or ID on CIS

Password

Your password on the remote service (Remember - it is case-sensitive)

Phone

The telephone number of the service In addition to the ten available Communications Settings, WigWam 2 also has a **Multi-Phone** function. In the Phone section of any of the ten Settings, you may insert a string of alternative numbers, separated by

Contents 33

semicolons. When you initiate a connection, these numbers will be tried, in turn, until a successful connection is made.

Down Dir

The directory into which you wish files to be downloaded. **N.B. This directory should not be a normal subdirectory of the \WWMULTI2 tree.** (A subdirectory called \%down is created by the installation - this is safe to use.)

Script

The logon script to use:

cix.scr - used for normal access to CIX

cixnews.scr - used for access to CIXNEWS, via CIXcisnode.scr – used for a CIS direct access node

mercury.scr – used for CIS access via the UK Mercury network

dialplus.scr – used for CIS access via the UK BT network

Other scripts may be available – consult the file README.WRI for details.

Compress

Instructs Cix to compress message files before downloading using PKARC. Requires you to have the program PKUNPAK or PKXARC available in a directory on your PATH. (Only applicable to CIX)

Capture

If this box is ticked, WigWam 2 will keep a complete record of all conversations with the remote service in the file CIXTERM.LOG/CISTERM.LOG – these files can grow quite large! This option can be very useful in tracking down stubborn problems. Please use this option before calling Ashmount for help.

Connection Type

You can create up to 10 communications settings for each service. Each may be configured for a different service number, a different prefix (for local exchanges), a different speed, a different initialisation string. (CompuServe users should remember that they will need to **Set CIS Options** for each speed setting (see *Chapter 3.1.c*)). Give a descriptive name to each setting. If more than one setting is defined, WigWam will ask you which one to use when you connect. If you create only one, WigWam will use it without further prompting.

To create a new type, press **Add**, type a new descriptive name in the description box, and alter the settings as you wish. All the settings from the previous type will be carried over, so you only need to alter the relevant one(s). To bring back a previously created setting, select it from the drop-down list beside the description field. To delete a setting, bring it back and then press Delete. There must always be at least one setting: the last one cannot be deleted.

Rate

Set to the speed at which you wish WigWam 2 to communicate with your modem. With appropriate hardware, WigWam is capable of running at speeds up to 38400 baud. However to run at speeds of 9600 baud and above, you may require a buffered UART (such as a 16550).

N.B. the speed of the connection between your modem and the modem of the remote service is negotiated between those modems. Use your modem initialisation string to set up your end of this negotiation.

Parity, Word Size

Set to the values expected by the node which you dial to access your service, usually **No Parity, 8 bits**.

WigWam for CompuServe

Contents 34

Automatic

These are a number of activities which WigWam 2 will carry out on each blink, if the relevant option is checked. These automatic options are only applicable to CIX.

Refresh Mail Dir

If this box is checked, WigWam 2 will download a copy of your CIX Mail directory on every blink

Clear Mail

If checked, your CIX Mail directory will be cleared of read mail.

Download FTP

Will collect any waiting FTP files (See Chapter 7.2.g)

Port

Set to the computer's serial port to which your modem is connected, e.g. COM1.(default)

Modem Control

Name

Meaning

Modem

You can select a modem from a list of the more common types. Selecting a modem will set the Init String to the recommended value for that particular modem: it has no other effect.

Init String

Defines a string which is sent to the modem when WigWam Terminal starts. The string must configure the modem as specified below this table. This will have been set if you have already chosen a modem.

Dial String

Defines a string to be sent to the modem immediately before the required telephone number, e.g. ATDT.

Connect

Defines the message sent by the modem when it connects successfully.

Wait ... for connect

Specifies the maximum period that WigWam 2 will wait after dialling for the modem to establish a connection

Hangup String

Specifies a string to be sent to the modem when WigWam Terminal terminates.

Modem configuration is the most common source of problems with any communications program. In order to use WigWam 2 successfully, your modem must be set up to support hardware flow control, and to pass all characters, including XON and XOFF, transparently. It is also important that your Windows ports settings (in Control Panel) are set to Hardware Flow Control. Many modems need a special init string defined in order to work this way: they will not work properly with WigWam unless the correct init string is defined. Do not assume that a string which works with another comms program will necessarily work with WigWam 2, or vice versa, although such a string might be a good starting point.

If you cannot find your modem in the 'modem' list, please try the 'Hayes compatible' settings we have provided for 2400 baud or 9600 baud modems.. If with these settings you experience problems such as garbled or cut off transmissions from the service, or

Contents 35

are unable to download binary files, please check the modem manual to ensure that your modem settings fulfil the conditions described in the previous paragraph, or confirm the settings with your modem's manufacturer or supplier.

You may not be able to run your modem under Windows at a high baud rate, even if your computer is a fast 486 or 386 based machine. If you experience problems at a high speed, and the flow control is set correctly, see if a lower speed works correctly.

Init String - Special Characters

The Modem Init String can contain any normal character, which will be sent to the modem directly. It can also contain control characters, which are prefixed by ^. For example, ^M will send a Control-M (which is the same as a Carriage Return). The following special character sequences can also be used:

Sequence

Meaning

\r

Carriage Return

\n

Line Feed

\p

Pause (approx. 2 seconds)

\b

Break

\\

Backslash

Dial String

In most cases, the simple string "ATDT" will suffice. This string is sent to the modem before the phone number. "AT" wakes up the modem, "D" orders it to dial and "T" instructs it to use tone dialling (if you need pulse dialling, use "P").

You may also use this string to send special instructions to your modem. For instance, you may need to dial "9" to obtain an outside line, so you should insert "ATDT9," in the Dial String box (the comma inserts a pause, giving your system time to react before receiving the telephone number.

You can also use this box to handle dual BT/Mercury dialling, or similar US or German PTT carriers:

Dialling via Mercury needs the following dial string set:-

ATDT131,nnnnnnnnnnnn or ATDP131,nnnnnnnnnnnnDT, where the nnn string is the Mercury PIN. (The number of commas may need adjusting to wait for the secondary dial tone.)

e) Prune Options

This dialog controls the fine tuning of the pruning process. For more information, see *Chapter 6.1.b*.

f) User management

This dialog is here to enable any upgrade to multi-user PowWow. WigWam 2 Multi is a single-user product.

g) Modify Forum/Conference

This section is dealt with in detail in *Chapter 7.1.g*,

2.2 Changing the Look of WigWam 2

WigWam 2 offers you the option to control the colours and fonts used. It also allows you to set different colours for different kinds of threads.

The major division in the WigWam 2 screen is between the upper, Thread window, which contains the headers of messages, showing their context, and the Message window, which contains the message whose header is highlighted in the Thread window. You can control the relative size of these two windows by moving the splitter bar between them. Place the cursor on the bar. It will change into an arrowed bar. click and drag the bar up or down, until it rests where you want it.

a) Changing Colours

The **Colour** command on the **View** menu allows you to change the foreground and background Colours used in the message display.

1. Thread Foreground - This is the colour of the lettering in the upper, Thread window, for normal messages.

2. Thread Background - The "paper" on which the letters appear, for normal messages.

3. Thread Involvement - Involvement threads are those which contains a message from you (N.B. These colours won't appear until your message has returned from the remote service.) This option controls the lettering. The background will be the same as for normal threads.

4. Thread Ignore - The 'ignore' colours are used on a thread which has the 'ignore' flag set. (Keyboard Shortcut I). This option controls the lettering.

5. Current Foreground - The current message is the one displayed in full in the lower, Message window. In the thread window, its header is highlighted. This option controls the lettering of current, normal messages.

6. Current Background - The "paper" beneath highlighted headers. It is best to make this distinctive. Many of WigWam's commands operate on the current message, so you need to know which that is.

7. Current Involvement - The background for a current message which is also part of an involvement thread.

8. Current Ignore - The background for a current message which is also part of an "ignored" thread.

9. Message Foreground - This option controls the lettering in the lower, Message window (regardless of the status of the thread).

10. Message Background - The "paper" for the Message window.

11. Default Colours - WigWam 2 comes set up with the above colours already set. If you play around with the above options, and find that your colour scheme doesn't work, you can return to the default.

Some background and foreground colours don't work together, and WigWam 2 won't let you choose them.

For more on Ignored Threads, see *Chapter 4.2.f*. For more on Involvement Threads, see *Chapter 7.1.e*.

b) Changing the Fonts

You can change the fonts and font-sizes that WigWam 2 uses for various purposes;

1. **Thread** - This font will be used in the upper, Thread window. Bear in mind that with larger fonts, the

end of long headers will be chopped off, and the number of headers which will fit in the thread window will be limited. Remember also that the Root messages will be picked out in Boldface.

2. **Proportional Message** - This font will be used in the Message window, unless you prefer to use the Fixed Font.
3. **Fixed Message** - This font will be used in the Message window, unless you choose to use the Proportional Font. To switch between these, see **The Message Font**, below.
4. **Editor** - This font will be used in the Message Editor, when composing or editing your own messages. This option is limited to Fixed fonts. You cannot be sure what equipment your "audience" is using to read your words. Using a Proportional font would give you a false idea of what your message would look like to others.
4. **Review** - Controls the font used in the Review window. (See *Chapter 7.1.c*, for more on Review).
5. **Printer** - The font used for printing. (See this chapter - 2.1.b, for control over the Left Margin).

In each case:-

Select **Font** from the **View** menu and choose the font that you wish to change.

Choose the font and pitch that you desire. The dialog box displays an example of the selected font.

Press **OK**

c) The Message Font

In a 'fixed font' such as Courier, all characters have the same width on the screen. In a 'proportional' font such as Times New Roman, the characters' widths are varied, so that, for example, 'i' is comparatively narrow and 'w' is comparatively wide.

This is a line in a message (Times New Roman - proportional)

This is a line in a message (Courier - non proportional)

Many people prefer to read their messages in a proportional font, but if a message contains a number of columns which are supposed to 'line up', it is best to compose and read the message in a fixed font. The **Proportional font** command on the **View** menu and its associated tool button (Keyboard Shortcut F) allow you to switch the message display between a fixed and a proportional font. Use this command if you are reading a message which looks as though it should 'line up' neatly, but does not.

2.3 Customising the Screen

You can control which elements of the screen will appear and which will not, in order to find your best working environment, balancing easy access to commands with easy reading. Most of these options are grouped in the **View** menu.

a) Show Toolbox

The Toolbox holds all the available Tool buttons.

You may find that the Toolbox clutters the screen, particularly at lower screen resolutions. You can place the 'Toggle Toolbox' button on the toolbar to give you a quick way of turning the toolbox on and off.

b) Show Toolbar

The Toolbar sits underneath the Menu bar, and is designed to hold the Tool Buttons you use most often, presuming that you do not wish to have the Toolbox showing.

Contents 38

To customise the Toolbar, drag a button off the toolbox and drop it on to an unwanted button on the toolbar. Disabled buttons can not be dragged. There is a blank button in the Toolbox, to allow you to group and separate your buttons.

The number of buttons on the toolbar will expand if you switch to a higher resolution screen. Maximise the WigWam window to see as many buttons as possible. The number of buttons visible at a given screen resolution cannot be altered, but using **View, Show Toolbar**, it is possible to have Buttons Only, Section (Topic) Box and Buttons, or no Toolbar/Section (Topic) Box at all.

c) Show Status Box

Show/Hide a box containing information on the number of unread messages in - Current Thread, Current Section/Topic, All Sections/Topics and Current Bookmark Set. To discover what a particular Tool button does, move the mouse pointer over it; a brief explanation will appear in the Status Box (& the Status Bar).

d) Show Status Bar

Show/Hide a bar, along the bottom of the screen, containing the almost the same information as the Status Box. The Current Bookmark Set is not shown.

e) Other Screen Design Controls

Several of the options in **Admin, User Options** effect the use of screen space - Message Header, Header Separation and Clean Display. See this Chapter - *User Options* for more details.

Chapter 3 **Connecting**

Now that you have made sure that WigWam 2 is configured correctly, you can start to use the program for the purpose intended - connecting to remote services.

Not surprisingly, the details of a Connect are slightly different for different services.

3.1 **Connecting to CompuServe**

Before you can start any serious downloading of CompuServe messages, there are three processes which need to be carried out first.

a) Setting CompuServe Options

Before you can use WigWam 2 with CompuServe, you must set up CompuServe to work in a way that WigWam 2 can understand. Because one aim of WigWam 2 is to reduce your telephone and CompuServe bills to the absolute minimum, WigWam 2 needs CompuServe to work in 'command' mode. You may find that when CompuServe is set up in this way, it is a little more difficult to use if you need to go on-line interactively. However, you can take advantage of a 'feature' of CompuServe, which is that the CompuServe settings can be set up differently for each baud rate that you use. You can therefore elect to let WigWam 2 communicate at 9600 baud (or 2400), while reserving 2400 baud (or 300) for interactive use. Getting WigWam 2 to set up CompuServe at one speed will not alter the settings that you use at a different speed. You can use one of your ten Communications Settings for manual connections only. (See previous chapter).

Conversely, if you intend to use WigWam 2 at more than one speed, you must run through the procedure outlined in this section for each speed that you intend to use, changing speeds as necessary in the Comms Settings dialog box. This process is now much easier, with up to ten Communications Settings available. Do be careful with the Multi-Phone function, though. Many CompuServe nodes reserve different numbers for different speeds. Listing two or more such numbers in a Multi-Phone string makes no allowance for speed changes.

The way that WigWam 2 configures CompuServe is entirely compatible with the use of other Off Line Readers such as Tapcis and Ozcis. It will also not interfere with the use of CIM. However, you should follow the procedure in this section even if you use these programs.

To set up the CompuServe options, select **Set CIS Options** from the **Actions** menu. WigWam 2 will ask you what name you wish to use to sign your personal mail. It will then log on to CompuServe, set up all options appropriately, and update your mail name if you have not set one previously.

In theory, this should be a one-time action, but in reality, CompuServe's settings do sometimes slip. If you are experiencing problems, particularly if they involve "sticking" on-line during a blink, then doing Set CIS Options may clear them.

If you have problems during your Set CIS Options connection, please return to *Chapters 1 & 2* and review your configuration options again, particularly the Communications Settings.

b) Joining Forums

Those who have upgraded from earlier versions of WigWam should have their Forum Selections preserved, and can skip this step (although it's probably worth checking, just in case).

Those who are using WigWam for the first time will need to join the Forums you want to download, *even if you are already a WigWam for CompuServe*

Contents 40

member. WigWam 2 needs to know the structure of the Forum and its associated Libraries. Joining forces this information to be collected. Re-joining has no effect on your status on the Forum.

From time to time, sysops alter the structure of their Forums - introducing new Sections, renaming Libraries. On such occasions, re-joining will up-date the structure on WigWam 2. Re-joining will not affect any other settings.

There are two main routes for joining a Forum. If you know the correct name of the Forum, use **Join Service Forum** from the **Forum** menu, choose **CIS** from the following dialog, and enter the name of the Forum you wish to join. Repeat this for each Forum name.

Ziffnet forums are held in another part of CompuServe (sometimes called another service). To join a Ziffnet forum, use the procedure given above for joining a forum when you know its name, but prefix the name with 'ZNT!'. For example, to join the Ziffnet PCMAG forum, follow the procedure above and at step 2, enter the name as ZNT!PCMAG.

Which Forum?

If you are not sure about the Forum name, or you need to re-join a number of Forums, use **View Service Forums** from the **Forum** menu. Choose **CIS** from the dialog, and you will be presented with a list of CompuServe Forums. **Find** the Forum you want, highlight it, and press **Join**. Repeat for each Forum.

For very new users, CompuServe provides a free 'practice' forum called PRACTICE, where you can test your ability to read and post messages without paying CompuServe charges (apart from connect charges). You may wish to try out the steps in this chapter by joining the PRACTICE forum and reading and posting some messages.

NB. WigWam 2 comes supplied with a recent Forum list, but we cannot guarantee that it is entirely up to date. This, your first connect, would be a good time to make sure that you have the latest version. To do this, choose **Refresh Forum List** from the **Forum** menu.

Finally, choose **Connect** from the **Actions** menu, select **Full Download** (Keyboard Shortcut Ctrl-T) from the sub-menu.

At this point, you will see the **Review** window, if you have checked **Auto Review** in **User Options**. This will be explained in more detail in the next chapter - *Reading & Writing*, but, for now, you will see the commands you have just issued listed. Press **OK** and WigWam 2 will proceed to connect to CompuServe and download the information WigWam 2 needs for the next stage.

Visitor Announcement/Newsflash

Most forums have a 'visitor announcement' which is displayed to non-members when they first access the forum. It usually contains some general information about the purpose and 'rules' of the forum. From time to time, sysops also display 'newsflashes', which contain important news about the forum or the subjects that it covers.

When WigWam joins a forum, it will capture the Visitor Announcement and the current Newsflash so that you can read them off-line. We will cover the way that you read messages in more detail in the next chapter, but for the time being, if you have just connected to CompuServe to join your first Forum, you can read your first CompuServe messages (the Newsflash and Visitor Announcement) by selecting **Next Unread** from the **Section** menu, or by pressing the Enter key on your keyboard.

Problems Joining?

While there are many forums on CompuServe, there are also many things which are not forums, and therefore can't be joined. Technically, anywhere that you can GO to on-line is called a Page. Some of these Pages are Forums, and some are not. For example, GO SPACE takes you to a page which contains a menu. From the menu, you can select two forums: the Space forum

Contents 41

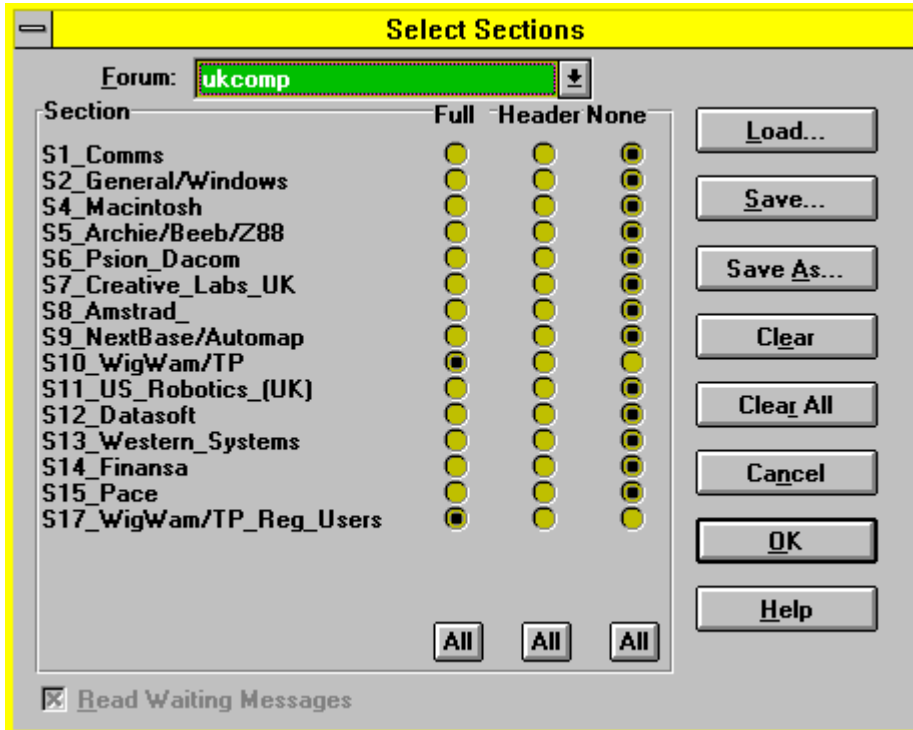
(SPACEFORUM) and the Astronomy forum (ASTROFORUM). Both SPACEFORUM and ASTROFORUM are forums which you can join using WigWam, but SPACE itself is not a forum, it is just a menu, and if you try to join it, WigWam will send you a message explaining this.

Sometimes it is hard to tell the difference between a forum and a non-forum, particularly as the list of forums captured from CompuServe contains non-forums as well as forums. One useful rule of thumb is that forums almost always have the word 'forum' in their description. For example, the description of ACIUS is 'ACIUS Forum', and it is indeed a proper forum, while the description of MICROSOFT is 'Microsoft Connection', and MICROSOFT is not a forum – it is in fact a menu giving access to the many Microsoft forums on CompuServe.

If you are in doubt about whether something is really a forum, it does no harm to try joining. WigWam 2 will let you know if it can't.

c) Choosing Sections to Download

Upgraders should have their Section selections preserved, so should be able to skip this step (but it doesn't hurt to check). Select **Sections to Collect** from the **Actions** menu. Click on the list-box at the top of the dialog, and you should see a list of all the Forums you have just (re-)joined.



NB It is no longer necessary to re-join a forum which has changed its sections. Just run the Update Section Names Script instead. Click on one of them, and a list of the Sections available in that Forum. You are offered a choice of **Full**, **Header only** or **None** for each Section.

Full will download all the messages in that Section in full. **Header only** will download just the headers of messages from that Section. **None** will ignore that Section entirely.

If you wish to apply the same setting to all the Sections in the Forum, just click on the **All** button at the foot of the relevant column.

If you mark all the Sections in a Forum "**None**", a checkbox at the bottom-left of the dialog called **Read Waiting Messages** becomes available. Checking this will allow you to collect any messages sent to you, by name, in that Forum, whilst leaving the rest alone.

The Sections to Collect dialog lets you build up a collection of different settings to use to fit in with your schedule (or as the mood

Contents 43

takes you) – for example there may be some forums which you wish to check every day, and some that you only check once a week. You can save your download settings to a file, and switch from one set of settings to another by switching files. There is always a ‘current’ settings file, associated with the current settings. Its pathname is shown in the dialog box title. The default settings file is called "confs.sel".

To save the settings to a file, press **Save As** and choose a suitable file and location. To retrieve settings from a file, press **Load** and select the file. Note that the **Download Settings** dialog always shows you the current settings – i.e. those that will apply if you connect to CompuServe right now.

The buttons in the dialog box help you manipulate settings:

Button

Meaning

Load

Loads settings from an existing settings file

Save

Saves settings to the current settings file

Save As

Creates a new settings file

Clear

Sets all sections in the displayed forum to None

Clear All

Sets all sections in all Forums to None

OK

Confirms the current settings and closes the dialog

Cancel

Cancels changes to the current settings and closes the dialog

d) Resigning Forums

There is no need to resign CompuServe forums. Just stop downloading messages. If you wish to get rid of a Forum (or just a Section) from your hard disk, use **Forum, Resign** and select the Forum or Section(s) you want to lose.

But don't forget to stop downloading messages from it as well.

e) Normal Connect

Now you have **Set CIS Options** and chosen **Sections to Collect**, you are ready to begin routine downloading of messages.

WigWam 2 provides three different commands for connecting to CompuServe. You initiate a connection by selecting the appropriate command from the **Actions/Connect** menu item. The commands are as follows:

Manual Connect (Keyboard Shortcut Ctrl-Q)

Puts you on-line to CompuServe and enters ID and password, but does not carry out any WigWam actions. You can use this to work on-line. The WigWam Terminal program, which you will be using if you select this command, is explained in Chapter 7.

Full Download (Keyboard Shortcut Ctrl-T)

Contents 44

Goes on-line to CompuServe, carries out all requested actions (such as joining forums, refreshing the List of Forums and so on), and downloads messages from the selected Forums and Sections.

Selective Download (Keyboard Shortcut Ctrl-O)

Goes on-line to CompuServe, carries out all requested actions (including posting any messages that you have composed) but does not download new messages from the selected forums.

Scheduled Full Download

Carries out a full download after a specified wait time. While every precaution is taken to avoid an error leaving WigWam 2 logged in to CompuServe, we advise against using this command unless you are absolutely confident that your system is communicating with CompuServe reliably. If your modem permits an inactivity time-out, enable it.

The difference between 'Full Download' and 'Selective Download' is that 'Selective Download' does not download new messages. That is the only difference. We will return to this subject later when we discuss message header downloads.

If you have joined some new forums and marked up some sections for download, you will probably be eager to download some messages. Select 'Full Download' and sit back while WigWam 2 logs on to CompuServe and fetches the messages. You will be able to watch the on-line session to CompuServe, and you will see a status report as the messages are downloaded.

f) Downloading Message Headers

As shown earlier when examining the Download Selection dialog box, WigWam 2 provides the ability to download message headers only, as an alternative to downloading whole messages.

When you use message headers, reading messages becomes a two-stage process.

First, you connect to CompuServe and collect the headers

Next you read through the headers and 'mark' the headers that you are interested in.

Then you then connect to CompuServe again, and this time WigWam captures the full message body of all messages in the marked threads.

Finally you read the full messages.

Although it involves two connections, the amount of messages downloaded can be dramatically reduced – thereby saving you both money and time.

To enable header-only downloads, choose **Sections to Collect** from the **Actions** menu, and set the required Sections in the Download Selection dialog to 'Header'. You can set some Sections in a Forum to 'Full' and others to 'Header' if you wish. To mark a header message for full download, highlight the message and select **Fetch Full Message** from the **Section** menu, or press the > key on your keyboard. A pointer icon will appear next to the Header. The message and any comments to it will be downloaded in full the next time that you connect to CompuServe, using either a **Full Download** or a **Selective Download**. (If you change your mind, repeating those same actions will remove the pointer marker.)

Because messages can scroll rapidly in busy forums (which are likely to be the ones that you will wish to read in header mode), we suggest that you use a Full Download to fetch the headers, followed by a Selective Download soon afterwards to fetch the full messages. That way you will always fetch the full messages soon after downloading a fresh batch of headers.

WigWam for CompuServe

WigWam 2 has two features to make header reading easier for you. First of all, if on subsequent downloads there are additional messages in a thread that you have previously downloaded in full, WigWam 2 will automatically mark the new headers for full download. Secondly, each time you download some full messages to a header mode section, WigWam 2 will remove all the header-only messages previously stored in the section – thereby stopping your message base from filling up with old, unwanted header messages.

If you download some messages in full and then decide that the thread they are in is of no interest to you, mark the thread for deletion by highlighting it, (and collapsing it with left-arrow, if you are using Thread Mode) and selecting the **Delete** command from the **Edit** menu. This will stop WigWam 2 from auto-marking messages in that thread during subsequent downloads.

When a header is marked for full download, WigWam 2 will force the marked message to be maintained as 'unread', so that you will come back to it when you read unread messages after the full message has been downloaded. If the full message is not available for download, because it has scrolled or been deleted, the 'permanent unread' mark will persist. You can remove it by marking the message for download again – the pointer indicating a full message mark will disappear.

3.2 **Connecting to CIX**

When WigWam 2 connects to Cix, it downloads all unread messages in all the Conferences you have joined, so upgraders need make no changes to their Conferences. However, WigWam 2 now operates a system of conference control which needs information about each conference. Upgraders will find that WigWam 2 requests a download of the Show <conference> information for each conference in your message base. This holds data on the moderators of the conference (which WigWam 2 uses to permit you moderator access, if you are a moderator), and details of all the topics in the conference, some of which you may have resigned. This information will be stored in files in the WWMULTI2 directory in the form *.nam, and are accessible via the **Actions, Show, Conference Information** menu. Do not interrupt this process, even though it may make your first connect somewhat longer than usual. If you have been using Cix without an off-line reader, you may have a large number of messages waiting for download. To avoid a large download of unwanted messages, log on manually to Cix and use the 'show new' command to see what is waiting for download. Resign from any Conferences you are no longer interested from before connecting to Cix with WigWam 2.

a) Joining Conferences

Most Conferences on Cix are open to all, however in order to take part in the discussion in a Conference, and use WigWam 2 to download messages from it, you must 'join' the Conference. Joining a Conference doesn't cost anything above the normal Cix charges, and doesn't place any particular obligations on you, apart from the rules of conduct for the Conference. Before you join a Conferences, though, you must find out what it is called.

b) Viewing the Conference List

Cix maintains a list of Conferences which you can view from within the program. To view the list, select **View Service Conferences** from the **Conference** menu. To mark a Conference for joining, highlight its name, and press **Join**. WigWam 2 will make a note to join the Conference the next time that you connect to Cix. When you do so, WigWam will also download information about that conference, for later use. NB. This method will join *all* Topics in the chosen Conference. Some conferences have a great many topics. You may wish to join them all, check which ones you are interested in, and then resign the rest.

c) Updating the Conference List

WigWam 2 comes supplied with a list of CIX Conferences, but new Conferences are being created almost every day. You may wish to update the list every now and then. You can do this by selecting **Refresh Conference List** from the **Conference** menu. The list will be updated the next time you connect to Cix.

d) Joining a Conference when you know its Name

If you know the name of a Conference, you can join it without having to view the Conference List: This method has the advantage that you may join an individual Topic, (e.g. wigwam2/files) and leave the rest alone. You can, however, join the whole conference by this means, if you so choose.

1. Choose Join Service Conference from the Conference menu.
2. Enter the name of the Conference[/Topic]
3. Press OK.

The Conference will be marked for joining when you next connect to Cix.

e) The Join Itself

When you connect to Cix by selecting either **Full Download** or **Selective Download** from the **Connect...** option on the **Actions** menu (see below), WigWam 2 will join you to the Conferences you request. Note that for closed or confidential Conferences (e.g. for registered users of a software product), you cannot join this way, and attempting to will produce an error message (though this will not affect the rest of your communications session). Instead, you must mail one of the moderators requesting admission, and they will make you a member if they see fit.

f) Message Pointers

Cix gives each message in a Conference topic a unique number. Messages are numbered in chronological order. Between sessions, Cix remembers the highest message number that you have read in the topic (this is known as a 'message pointer').

g) Normal Connect

WigWam 2 provides four different commands for connecting to Cix. You initiate a connection by selecting the appropriate command from the **Actions/Connect** menu item. The commands are as follows:

Full Download (Keyboard Shortcut T)

Goes on-line to Cix, carries out all requested actions (such as joining Conferences, refreshing the list of Conferences and so on), and downloads messages from the selected Conferences.

Selective Download (Keyboard Shortcut Ctrl-O)

Goes on-line to Cix, carries out all requested actions (including posting any messages that you have composed) but does not

WigWam for CompuServe

Contents **47**

download any messages.

Manual Connect (Keyboard Shortcut Ctrl-Q)

Puts you on-line to Cix, but does not carry out any WigWam 2 actions. You can use this to work on-line. The WigWam Terminal program, which you will be using if you select this command, is explained in Chapter 8.

Scheduled Full Connect

Carries out a full download after a specified wait time. While every precaution is taken to avoid an error leaving WigWam 2 logged in to Cix, we advise against using this command unless you are absolutely confident that your system is communicating with Cix reliably.

h) The Connection

If you have joined some new Conferences and marked up some Topics for download, you will probably be eager to download some messages. Select **Full Download** and sit back while WigWam 2 logs on to Cix and fetches the messages. You will be able to watch the on-line session to Cix, and you will see a status report as the messages are downloaded.

3.3 Connecting to CIXNEWS

Cixnews is a gateway on CIX, giving access to Usenet, a world-wide communications network.

It is the aim of WigWam 2 and CIX to treat messages on CIXNEWS just like CIX messages. Wherever possible, WigWam 2 commands operate identically within the CIXNEWS service.

However, there are some important differences. There are no Files, no Resumes, no Billing (that will be included in your CIX bill). There is no private Mail system within CIXNEWS. You can send private Mail to people you encounter in CIXNEWS, but you must do this via CIX's Internet gateway. In WigWam 2, that is just a matter of copying the *whole* address of the recipient into the "To" field of the Mail Message Editor.

You should be warned that the traffic in some newsgroups (the Usenet name for conferences) is heavy - join them with care. You will also find that a large proportion of the material you download consists of extensive headers, showing the (sometimes) tortuous route each message has taken to get to you. Much of this is stripped away by WigWam 2, for easier reading, but it is still downloaded.

There is one other, technical difference; unlike CIX and CompuServe (which admit 8-bit communications), CIXNEWS is strictly 7-bit. This means that you are limited to the lower 127 characters of the ASCII table (essentially, the characters on your keyboard).

At the time of writing this manual, the CIXNEWS gateway is relatively new, so there may yet be changes to the procedure, but connecting to CIXNEWS via WigWam 2 operates identically to a CIX connection.

At present, it is not possible to download or upload CIX messages and CIXNEWS messages on the same connection.

There are no file-handling commands in Cixnews, because Usenet does not deal in files, only messages. If you wish to locate and acquire files from "out there", you will have to use Cix's Internet gateway. WigWam 2 includes a number of scripts to help with this. For more on this, see *Chapter 7.3.g*.

It is beyond the competence of this manual to explain the Usenet/Internet systems. There are a number of useful text files in

Contents 48

cix/internet which would reward study. However, it is worth pointing out that neither Usenet nor Internet are discrete services, as such. They are the result of the connections built up between hundreds of independent computer sites, all around the world. No overall authority runs them, and its rules derive from a number of agreements, built up over many years. Individual sites are free to impose extra restrictions on the material they will transmit.

Chapter 4 Reading and Writing Messages

WigWam 2 offers the simplest possible way of reading through your downloaded messages; press ENTER, read the message, press ENTER to bring up the next one, and so on, until you've read everything.

This is equivalent to the menu command **Topic, Next Unread** (in CIX Mode), or **Section, Next Unread** (in CIS Mode). There is also a Toolbar Button to perform the same command.

Pressing ENTER marks the current message as Read, and moves on to the next. At the end of each Topic (or Section), WigWam 2 goes to the last "Root" message in that Topic/Section, to give you a second chance to contribute to the discussion. Another ENTER will move you on to the next Topic/Section with Unread messages.

4.1 Moving around the Message base

WigWam 2 displays messages from one section/topic at a time. Because it keeps a local copy of previous sessions, you read new messages in the context of the old. The local copy of messages is called the 'message base'.

To view the messages held in your message base in a particular section/topic, use the **Go** command on the **Forum** menu (**Join** on the **Conference** menu), or click the right mouse button, or select the Section/Topic from the dropdown list box on the toolbar.

Whichever way, you will see a number after the name of each section/topic: this is the number of unread messages in the section/topic. WigWam 2 also summarises the number of unread messages on the status bar at the bottom of the main window. If you prefer a 'floating' count of unread messages, select **Show Status Box** from the **View** menu.

a) Threads

Typically, one member of a Forum/Conference will post a message, and other members will reply. The chain comprised of a message and its replies is known as a 'thread'. WigWam provides several view modes (see *Message View Modes* below), with the aim of making it easy for you to follow the traffic in your message base by separately identifying each thread, and showing you the logical structure of the messages within a thread.

b) Message Viewer Panels

When you are reading messages, the main WigWam 2 window contains two large panels. The upper one provides 'header' details of all the messages. It is a scrollable listbox. You can move through it by using the +, - and cursor keys, using Ctrl-PgUp/Ctrl-PgDn, or by using the mouse on the vertical scroll-bar. The lower panel displays the text of the currently highlighted message.

You can scroll it up and down by using the PgUp and PgDn keys or by using the mouse. If you remember that Enter moves you to the next unread message, you will see that you can control the whole reading operation quite comfortably by keeping your right hand over the numeric keypad.

The text of the current message is preceded by a short 'header' which shows the message number, its author, the time and date at which it was posted, and its length in characters. You can increase the separation between the header and the message text by checking the **Header Separation** option in the **Admin/User Options** dialog. You can also suppress the display of the header information by unchecking the Message Header box.

The name of the current Forum/Conference or Section/Topic is displayed in the title of the main WigWam 2 window, and also in the display area of the dropdown listbox on the toolbar.

You can alter the size of the two main panels by dragging the thick central dividing line with the mouse. The 'Clean Display'

WigWam for CompuServe

option in **Admin/User Options** increases the display 'real estate' somewhat by suppressing the horizontal scroll bars: you will find this useful if you usually use WigWam 2 in a window that is wide enough that you do not need to scroll horizontally.

c) Message View Modes

The message view modes provide different ways of displaying the message header summary in the top panel of the main window. The mode is set from the **View** menu:

View Threads

This is the default viewing mode. It shows you each thread in turn, with the message that originated each thread displayed in bold. The thread structure is shown pictorially in the way that the messages are indented: the indents and the lines between messages indicate which message is a comment to which. The **CURSOR LEFT** key will 'collapse' the thread to its root, allowing you to perform actions, such as **Keep**, **Delete** or **Ignore**, on the whole thread.

View Roots Only

This mode is similar, except that the threads are shown 'collapsed', with only the header message being visible in the Thread Window. To 'expand' a thread, double click on the header message, or highlight it and press the **Cursor Right** key. To collapse a thread, double click on any message in the thread, or highlight any message in the thread and press the **Cursor Left** key. Pressing **ENTER** will still take you to the Next Unread message. Pressing **SPACEBAR** will mark the whole thread **READ**, and move on to the next root message.

View Chronologically

In this mode, the headers of each message are shown one after the other in chronological order, with no indication of the thread structure. This mode is useful if you wish to see all messages posted after a certain date, perhaps to search through the topic/section for a particular message.

Usually, you will wish to keep the view mode in 'threads' or 'roots only' mode. 'Threads' is the best mode if you intend to read every message in a section. It is also a little faster, because less of the items need to be repainted when you move from one thread to another. 'Roots only' is the best mode if you wish to skim a forum, dipping in to occasional threads of interest.

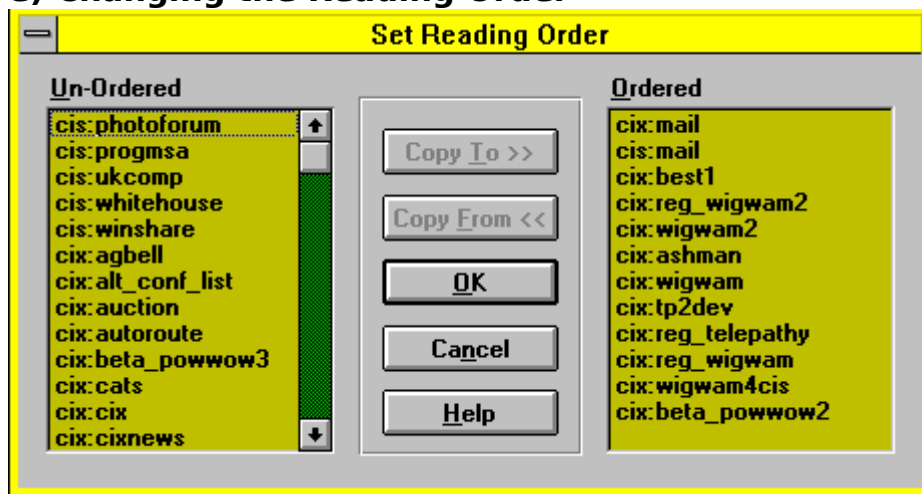
In addition to the **ENTER** key, another useful key is the spacebar, which marks the current message as read and steps down to the next one in the section/topic, without changing sections/topics. The real difference between the two is in **Roots Only** mode: **Enter** will expand a thread and take you in to view an unread message, while **Space** will mark all messages in the thread as read, and step down to the next.

d) Next and Previous

The **Next Forum (Next Conference)** command, on the **Forum (Conference)** menu, will move you on to the next Forum or Section (Conference or Topic) without disturbing any further unread messages in the current one. The current section/topic is 'postponed', and WigWam 2 will return to it later.

The **Previous Forum (Previous Conference)** command, also on the **Forum (Conference)** menu, will move you to the Forum and Section (Conference and Topic) you were reading before you started reading the current one. This can be useful if you move through your new messages too quickly.

e) Changing the Reading Order



As you read through your unread messages, WigWam 2 will usually switch from one Conference/Forum to another in alphabetical order. You can override this 'natural' order by selecting **Set Reading Order** from the **Admin** menu.

The Set Reading Order dialogue displays a list of 'ordered' Conferences/Forums on the right, and 'unordered' Conferences/Forums on the left. The 'ordered' list is your override on WigWam's natural reading order: when displaying unread messages, WigWam will first work through the 'ordered' Conferences/Forums, in the order shown, and will then work through the 'unordered' list, again in the shown order.

WigWam 2 will always display unread messages from all Topics/Sections in a Conference/Forum before switching to another Conference. It is not possible to alter the order in which Topics or Sections are displayed within a Conference or Forum.

f) Goto

The **Goto** command on the **Section (Topic)** menu (Keyboard Shortcut #) provides a way of moving to a message when you know its number. Enter the number when prompted and press **OK**.

g) Original

The **Original** command on the **Section (Topic)** menu (Keyboard Shortcut O) moves you to the message to which the current message is a reply.

h) Undo

Edit, Undo (Keyboard Shortcut Ctrl-Z) allows you to backtrack on your actions (for instance, if you have held down the Enter key too long, and skipped a series of messages). However, it will not reset any flags; i.e.

Contents **52**

these messages will still be marked Read, a Deleted message will still be marked Deleted (but Undo will be able to return you to it, so you can toggle the flag yourself). This can be useful to find a message you've just read, but can't remember where. There is a (variable) limit to the number of operations Undo can backtrack, but it should handle at least ten.

4.2 **Marking Messages**

WigWam 2 provides a number of means of marking messages for later action. We have discussed one of them already - the Read marker. Messages can be marked Unread, as well as Read. All of the marks outlined below can be toggled (i.e. switched on and off) by the same command.

a) Marking Messages Read/Unread

Each time you move on from one message to the next using the Enter key or the **Next Unread** menu command, WigWam 2 removes the 'unread' mark from the message you have left. You can alter the read/unread status of the currently highlighted message explicitly by using the **Mark Message Read** and **Mark Message Unread** commands on the **Section (Topic)** menu. The **Mark Section Read (Mark Topic Read)** command, also on the **Section (Topic)** menu, marks all messages in the current Section/Topic as read. The **Mark All Read** command on the **Actions** menu marks all messages in all Forums and Conferences *in all services* as read.

N.B. These commands cannot be undone with Ctrl-Z.

b) The Skip Command

The **Skip** command, on the **Section (Topic)** menu, allows you to change WigWam's idea of which messages in a section/topic you have read – it is the local equivalent of CompuServe's Set High Message Number command or CIX's own SKIP command. The command provides several options:

Skip Current Thread

Marks all messages in the thread to which the currently highlighted message belongs as read.

Skip to First

Marks all messages in the Section/Topic unread.

Skip to Last

Marks all messages in the Section/Topic read.

Skip to Message Number

Marks all messages up to the specified message read, and all subsequent messages unread.

Skip Back

Moves the 'high message number' back by the specified number of messages.

c) Bookmarks

Bookmarks provide a means for you to mark specific messages so that you can return to them later. You can have up to ten different Bookmark Sets.

Placing a Bookmark

To place a bookmark on the current message, select **Bookmark** from the **Edit** menu. To remove it, select **Bookmark** again

WigWam for CompuServe

(Keyboard Shortcut B, for placing and removing Bookmark). To remove all bookmarks, select **Remove all Bookmarks** from the **Actions** menu. This command operates on the currently-active set only. To see which Bookmark Set is active, or to select another, use **View, Bookmark Set**. The Search command (see below) automatically places bookmarks on the messages containing the chosen word or phrase. Again, these Bookmarks appear in the currently-active Bookmark Set. You can also switch Bookmark Sets using Alt-0,1,2,3 etc.

Viewing Bookmarks

You can move through the bookmarked messages using the **Next Bookmark** command on the **Section (Topic)** menu (Keyboard Shortcut Shift-ENTER). Alternatively, choose **List Bookmarks** from the Actions menu. This will display a list of all bookmarked messages. Pressing **View** will move the message highlight bar to the chosen bookmarked message. Selecting **Unmark** will remove the bookmark from the chosen message.

Mark Bookmarks

Four commands on the **Actions** menu help you work with bookmarked messages. **Mark Bookmarks Read** will change the status of all currently bookmarked messages (in the current Bookmark Set) to 'read'. **Mark Bookmarks Ignored** will set the 'ignore' flag (see below) on all threads containing a bookmarked message (see 'Ignore' below). **Mark Bookmarks Kept** or **Deleted** perform those tasks on the current Bookmark Set. (These refer to Pruning controls, which will be explained in more detail in Chapter 6 *Housekeeping*.)

N.B. Bookmarking a message does not protect it from pruning. If you are using a Bookmark Set to maintain a personal list of interesting messages, make sure to mark them for keeping as well.

d) Marking Messages for Deletion

To mark a message for deletion, highlight the message and select **Delete** from the **Edit** menu or press the D key on your keyboard. You can select **Delete** again (or press D) to reverse the effect, as the message is not actually removed until Prune is run.

To mark a whole thread for deletion, 'collapse' the thread and follow the procedure above.

Deleted messages are indicated by a small trashcan next to the header in the upper message display window.

These messages will not disappear immediately, but will be removed the next time you run Prune (See Chapter 6.1.c).

e) Marking Messages for Keeping

Just as you can mark messages to be deleted, you can also mark them to be kept. Kept messages will not be deleted, regardless of their age, regardless of Prune Setting (See Chapter 6.1.b). You keep messages or threads by means of the **Edit/Keep** command, or by means of the k key on your keyboard. As with Delete, using the same command reverses the marking.

Kept messages are indicated by a small key next to the header in the upper message display window.

f) Ignoring Threads

The **Ignore** command on the **Edit** menu (Keyboard Shortcut I) tells WigWam 2 that you are not interested in seeing any new messages in the current thread. New messages in an 'ignored' thread will automatically be marked as read. 'Ignored' threads are displayed in a special foreground colour (See *Chapter 2.2.a*). Please note that this command is "local" to WigWam 2. It will not stop messages being downloaded from the remote service.

To remove an 'ignore' mark, highlight the message concerned and select **Ignore** again (Keyboard Shortcut I). To remove all

Contents 54

'ignore' marks, select **Remove All Ignore Marks** from the **Actions** menu.

g) Searching for Messages

WigWam 2 contains commands on the **Edit** menu which you can use to locate messages by searching for a word or phrase in the message header or body:

Find

(Keyboard Shortcut Shift F3) Searches messages in the current Section/Topic only. If the specified text is found, the highlight bar moves to the appropriate message and the found text is shown highlighted in the lower window. **Find Again** (Keyboard Shortcut F3) allows you to repeat the find, for a further occurrence.

Search

You may search across all Services, Forums/Conferences and Sections/Topics, or select individual Sections/Topics for your search. Any 'hits' are displayed in the WigWam Status Window, which will pop up when needed. You can copy text in the Status Window to the clipboard by highlighting it and pressing the **Copy** button. 'Hits' will also be Bookmarked (see above). To narrow the search (if your first attempt turns up too many answers), you may limit a second search to Bookmarks only. Bookmarked messages which do not meet the second search parameters will be removed from the Bookmark Set.

h) Message Icons

You will see some symbols to the left of some of the messages. The meaning may depend on whether the symbol is placed against an individual message, or an entire thread in Roots Only mode (or a "collapsed" thread in Thread Mode):

Symbol

Meaning (thread in Roots Only)

Meaning (Individual Message)



This is the root message of a 'collapsed' thread

This is the root message of a thread

...

The root message of this thread is not in your message base

The message is a comment to an earlier message, but this earlier message is not in your message base



The thread contains unread messages

You have not previously read this message



Contents **55**

A header message in the thread is marked for full message download (CIS only)
The message is marked for full message download. (CIS only)



All messages in the thread are marked for deletion
The message is marked for deletion



All messages in the thread are marked for keeping
The message is marked for keeping



A message in this thread is bookmarked.
This message is bookmarked



You have composed a comment to a message in this thread, which is awaiting upload
You have composed a comment to this message, which is awaiting upload

i) Filing and Printing Messages

The **File** and **Print** Commands, accessible from the **File** menu, allow you to file or print the currently highlighted message or thread, a range of messages specified by message number, or the contents of the current Bookmark Set. The Quick File and Quick Print Tools from the Toolbox provide a fast way to file or print the currently highlighted message or thread.

The printer font can be set from the **Font** command on the **View** menu, and the left hand printer margin can be set by selecting **User Options** from the **Admin** menu.

4.3 Writing Messages and Replies

There are some crucial differences between Cix and CompuServe when it comes to adding your own gems to the conversation, but WigWam 2 treats them more or less the same, translating your commands for the appropriate service. Whether you choose to you CIS Mode or Cix Mode, WigWam 2 will send the appropriate commands to CIS or Cix, even if you **Compose** a message for Cix, or **Say** a message for CIS.

a) Comment, Say/Reply, Compose

WigWam 2 provides ways for you to make your own contributions to the discussion in a Forum or Conference. You do this by selecting the appropriate command from the **Section** or **Topic** menu. Note that you must be reading messages in the appropriate

WigWam for CompuServe

Contents **56**

forum and section before using these commands:

Section, Reply (Topic, Comment)

Reply (Keyboard Shortcut R) posts a message into a CompuServe forum as a reply to an existing message (the currently highlighted message). **Comment** (Keyboard Shortcut C) does the equivalent in a Cix Topic.

Messages in a forum are only retained on CompuServe for a week or two – less in a busy forum – after that they are removed, or ‘scrolled’ in CompuServe parlance. If you try to comment to a message which has scrolled, CompuServe will reject the message, and WigWam 2 will return it to you as a mail message so that you can decide whether to repost it as a new thread, or mail it to the recipient.

Messages on Cix are kept indefinitely, but some topics are Read-Only (the Moderator of the Conference controls this). The Window bar (at the top of the screen) will have Read Only beside the Topic name in such cases, and WigWam 2 will not allow you to send any messages to it.

Section, Compose (Topic,)

Compose (Keyboard Shortcut C) posts a message into a CompuServe forum as the start of a new thread. You should use **Compose** instead of **Reply** when you wish to start a conversation on a new subject, as opposed to ‘joining in’ to an existing discussion. The **Compose** command and the **Compose** tool work identically.

Say (Keyboard Shortcut S) performs the equivalent action in Cix mode

Mail/Send Mail

The **Send Mail** command (Keyboard Shortcut M) provides you with a way of replying to a Forum message via personal mail, rather than by posting a message in the forum.

The same command performs the same purpose in CIX mode. Additionally (for Cix only) the Keyboard Shortcut R allows you to Reply by Mail - i.e. send a private message in response to a Conference message.

b) Working with the Message Editor

When you select any of the above, a Message Editor window will appear so that you can write your message.

When the Message Editor is active, you can switch to the main WigWam 2 window and browse through messages, review file lists and so on, however certain functions are disabled. The section/topic that the message is posted in (and the message that is commented against, if you are writing a comment/reply) will be that which was active at the time the Message Editor window appeared – changing sections/topics will not affect the destination of the message.

If you are Composing for CompuServe, you should complete the header fields at the top of the Message Editor Window, by specifying who the message is ‘To’, and its subject. All messages on CompuServe are sent to another user, even if they appear in public view. If you are posting a general message in a Forum, you can address it to All, or to Sysop if you wish to make sure that the Sysop reads it. Otherwise you can enter a CompuServe user name and User ID, perhaps from your Address Book (see later in this chapter).

Messages which you "Say" on Cix do not need to be addressed to anyone; they are the beginning of a new discussion, open to all.

Word Wrap

You should be aware that different users read messages on CompuServe and on Cix with equipment of varying degrees of capability. On your Windows machine, you may well be able to display a window that can handle line lengths of 200 characters or

WigWam for CompuServe

Contents 57

more. A DOS user is unlikely to be able to display more than 80 characters across the screen, and some users may be even more restricted. For this reason, WigWam 2 always uses a fixed pitch character set and a page width of approximately 72 characters in the Message Editor, so that you can see the message the way that most CompuServe or Cix users will see it.

When the Message Editor starts up, you will see an indication of the page-width allowable in your case. This will vary, depending on the font-size you choose (See **View, Fonts**). If you need a wider page (perhaps to include a quoted message), re-size the Message Editor window, by dragging the side of the frame with the mouse.

Message Editor Controls

The pushbuttons on the Message Editor are used as follows:

Button

Action

OK

Closes the editor and saves the message for upload

Cancel

Closes the editor and erases the message

Defer

Closes the editor, and saves the entered message. It will be displayed in the editor the next time that the editor is used. Only the text is saved, not the addressees or subject.

Include

Includes the text of the currently highlighted message at the current insertion point

Address

Opens the Address Book (see later in this Chapter).

Originator

Enters the address of the originator of the currently highlighted message on the To: Line

c) Posting Formatted Messages (CIS only)

Because CompuServe users use a wide variety of equipment to read their messages, CompuServe will normally re-format a message so that it fits the width of the reader's screen. You may wish to post something such as a program listing which you do not wish to be reformatted, or you may feel that you do not wish CompuServe to alter the format of a carefully honed missive. In this case, check the **Send As Shown** box in the Message Editor. The message will be uploaded and posted exactly as it is shown on the screen. This option is not available for Mail.

By using **Send As Shown**, you take on the responsibility of ensuring that all the recipients of your message are actually able to read it! You may well be able to do a better formatting job than WigWam 2 or CompuServe, but please be aware of the limitations of some users' equipment.

d) Posting Private (CIS Only)

If you check the 'Private' box in the Message Editor window, your message will only be visible to the addressee – it will not be seen by other Forum members. This is not the same as sending personal mail – the message is still posted to the forum but is only seen by you and the addressee.

Contents 58

CompuServe will ensure that all replies to a Private message are also Private. Some Sysops do not allow Private messages. If you attempt to post a Private message in a Forum which does not allow it, WigWam 2 will return it to you by mail.

e) Message Signatures

You can create a 'signature' which will be added to the end of any message that you compose. The signature is displayed in the message editor so that you can alter it before posting the message if you wish.

To create a signature, select **Signatures** from the **Actions** menu. You can create one signature to add to your CompuServe Forum messages, one for Cix Conference messages, another for Cixnews, for any other service and yet another to add to your mail messages - applicable to all services which accept mail.. WigWam 2 automatically adds a new line before your signature, to separate it from the message body.

Select the signature which you wish to edit, and compose the signature which you wish to use in the 'Signature' edit box. Press OK when you have edited all signatures to your satisfaction.

f) Withdrawing Messages

Sometimes you might post a message on the service, and then think better of it. You can ask WigWam 2 to delete a message that you have posted by highlighting it, and then selecting **Withdraw Message** from the **Section (Topic)** menu, or pressing the W key. The message will be deleted on the remote service the next time you connect (but not from your local message base).

g) Show Replies/Show Comments

When you comment on a message, a small R appears next to the message description line in the upper viewer window, to indicate that a reply is pending. You can select **Show Replies/Show Comments** from the **Section/Topic** menu to look at it quickly, or alternatively use Review (see below) to check all your actions and edit them if necessary.

h) Reviewing Messages before Upload

Messages and script commands are stored pending upload in a .BSC file - one for each service. The **Review** command on the **Actions** menu lets you browse these waiting commands and edit or delete them.

To review the waiting commands, select **Review**. A dialog box appears, in which the waiting commands are listed (if there are no waiting commands, the listbox will be empty). To edit a command, highlight it and press **Edit**. This will return the message or command to the message editor. To delete a command, highlight it and press **Delete**. When you have finished reviewing, press **OK** to save the changes you have made, or **Cancel** to abort them (pressing **Cancel** will abort *all* the changes you have made in the Review session).

When working with the message editor in Review, pressing **OK** will save the edited message. Pressing **Cancel** will abort any changes made to the message, and pressing **Delete** will delete the message.

If you wish, you can automatically invoke Review immediately before a connection to CompuServe. To do this, check the **Auto Review** box in **Admin, User Options**.

4.3 Mail

a) Sending and Receiving Mail

Contents **59**

Mail, sometimes called 'Personal Mail' or 'E-Mail', is an important feature of electronic conferencing services such as CompuServe and Cix. The basic rules of email are nearly universal, and since both your Cix email and your CIS email are being handled by WigWam 2, there should be very little difference in the way you handle the two systems.

There are a few differences of detail and of nomenclature, but little of importance.

Email provides the ability to send private messages to other users on the same service, or to users of other networks to which the service is connected, such as the Internet (which includes just about every system there is), X.400, and MHS users connected to the CompuServe MHS Hub.

Binary Mail (binmail) is handled slightly differently on the two systems. We will deal with that towards the end of this section.

b) Receiving Mail Messages

On Cix, all Mail to you will be downloaded without any effort from you.

On CompuServe, you should tick the Fetch Mail checkbox in the Communications Settings dialog, so that any waiting mail messages will be automatically downloaded when WigWam 2 connects to CompuServe.

In both cases, text messages will be put in the pseudo-forum (pseudo-conference) Mail, where you can read them in the same way that you read Forum or Conference messages.

c) Replying to Mail Messages

To reply to a mail message, highlight the message, select **Send Mail** from the **Mail** menu and press the Message Editor Originator button. The keyboard shortcut for this is different on the two systems. On CIS, pressing R "replies" to that message. On Cix, pressing C "comments" to it. (Just like Forum/Conference messages).

d) Originating Mail Messages

To originate a mail message, select **Send Mail** from the **Mail** menu (Keyboard Shortcut M - on both systems). You do not need to Go to the Mail 'forum' to send mail: you can send it from any point in the program.

CIS

You must put the CompuServe ID of the recipient in the To: field: you may optionally put the recipient's name as well. If you are sending the message through a gateway, put the full address including the gateway on the To: line – for example, to send a message to Ashmount via Internet mail, type
>INTERNET:ashmount@cix.compulink.co.uk
in the To: field.

To send a mail message to more than one recipient, type the addresses separated by semicolons. CompuServe charges a surcharge for each additional recipient.

CIX

When originating a message, you must put the Cix nickname of the recipient in the To: field. You can copy the nickname of the person who wrote a Conference or Mail message by highlighting the message and pressing the Message Editor's **Originator** button. You can also send Internet mail via Cix: use the full Internet address (e.g. ashmount@cix.compulink.co.uk) in place of the Cix nickname.

To send or copy a mail message to more than one recipient, type the addresses separated by semicolons.

e) Sending and Receiving Binary Mail

CompuServe and Cix (but not Cixnews) offer the facility to send binary files (programs or zipped-up text) to one or more other users of that system. That involves uploading the files from one computer, to an address on the service from which the recipient can download them. This system does not operate *between* services.

CIS

To send a binary file, select **Send File** from the **Mail** menu.

Binary files will be automatically downloaded to the download directory, and WigWam 2 will send you a mail message (which will again appear in the Mail 'forum') telling you that the file has arrived, and what its name is. CompuServe does not tell WigWam 2 what the file was called when the sender uploaded it, so WigWam 2 has to invent a name for it - usually 0bin.

CIX

To send a binary file, select the **Send File** command on the **Mail** menu, or click on the Binmail button. You will be prompted for the Cix nickname of the target(s). You may send to a number of targets at one time, by listing the nicknames, separated by semi-colons (;). You will then be prompted for the filename - enter the *Full Path* on your system. It is good form to send a mail message to recipients, informing them of the binmail.

When people send you a file via mail, they will usually send you a mail message to let you know, though this is not guaranteed. Cix will in any case place the file in your personal directory, along with any files you have uploaded. There are two ways to obtain files from your personal directory:

The slow way:-

1. Select **Script** from the Actions menu
2. Select **Download File from Binmail**
3. Type the name of the file you wish to download.

Alternatively, WigWam 2 can now download a fresh Mail directory on every blink (it is such a quick process that you probably won't notice it happening). Check **Mail/Refresh Dir** in **Communications Settings** to enable this. This will cause the contents of your personal directory to be listed in a Mail file list. When in the WigWam 2 Mail/messages topic, you can view and download from the file list just as in any other Conference. (See next chapter for more on handling file lists.)

f) Managing your Cix Mail Folders

Three additional commands on the **Mail** menu help you manage the mail folders that Cix holds on your behalf

Clear Read Mail

When a mail message is downloaded by WigWam 2, it continues to be held by Cix in your Cix 'in tray' but is marked as read. This command deletes all mail items in your Cix in tray, provided they are already marked as read. It is a good idea to do this every now and then, provided you are certain that the last download was successful so that all mail reached your system safely.

g) Fax

Both Cix and CIS offer a fax gateway. Neither permit the inclusion of graphics files - just text. WigWam 2 handles these gateways in the same way, via the Mail menu. There are some differences in functionality.

CIS

Contents 61

You can send a fax by CompuServe's Fax Gateway by selecting **Send Fax** from the **Mail** menu. For all non-US destinations, remember that you will need to prefix the fax number with the International Code, for destinations outside the USA.

CIX

You can send a fax via Cix's fax service by selecting **Send Fax** from the **Mail** menu. You will need to prefix the fax number with the International Code prefix (for *all* destinations).

The message editor is displayed with the following special option boxes:

200 DPI

Sends the fax at a higher-than-normal 200 DPI resolution.

No Cover

Sends a fax without the customary cover page

132 Columns

Sends a 132-column wide fax as opposed to the conventional 80 columns.

4.4 The Address Book

You use the Address Book to store the names and addresses of the people that you correspond with on a regular basis. You can also create 'address lists' containing a set of recipients. One address book is used for all services.

a) Displaying the Address Book

To display the Address Book, select **Address Book** from the **Mail** menu, or push the Address button in the Message Editor. You can leave the Address Book displayed while using other WigWam 2 functions.

Entries in the Address Book have three fields, which are used as follows:

Field

Use

Name

The person's name, or the name of the Address List

Comment

Any comment you like that will help you identify the person or the purpose of the Address List

Address

The address as used by WigWam 2 and CompuServe or CIX

The buttons on the Address Book have the following functions:

Button

Function

Find

Search the whole of each entry for the specified text (the search is not case sensitive)

Edit

Modify the currently highlighted entry

Contents 62

Insert

Insert an entry immediately above the currently highlighted one

Delete

Delete the currently highlighted entry

To

If the Message Editor is active, add the currently highlighted entry to the To: field, otherwise invoke the Message Editor to create a mail message and copy the current entry to the To: field

Cc

If the Message Editor is active, add the currently highlighted entry to the Cc field.

Close

Close the Address Book. You will be asked whether to save any changes you have made.

Adding an Address

To add an Address to the Address Book:

1. Highlight the entry immediately below the place where you want the new entry to appear
2. Press **Insert**
3. An Address Entry dialog will appear. If you are reading messages in WigWam 2, the dialog will contain the name and address of the originator of the currently highlighted message.
4. Complete the dialog as you wish and press **OK**.

N.B. WigWam 2 needs to know which service this address applies to. So, prefix a CompuServe ID with "cis:" and a Cix nickname with "cix:". This will be done automatically if you accept an ID or nickname from a highlighted message header.

To create an Address List, enter the addresses of all the desired recipients in the Address field, separated by semicolons.

Editing an Address

To modify an existing entry:

1. Highlight the entry
2. Press **Edit**. An Address Entry dialog will appear, containing the relevant details.
3. Alter the fields appropriately
4. Press **OK**.

b) Using Address Book for Mail

Sending a Mail Message from the Address Book

When the Message editor is not displayed, you can send a mail message as follows:

1. Highlight the desired recipient in the Address Book
2. Press **To**

The Message Editor will appear, and should be completed as normal.

Using the Address Book from the Message Editor

Contents 63

To use the address book from the Message editor:

1. If the Address Book is not displayed or is not visible, press the **Address** button on the Message Editor.
2. Highlight the desired Address Book entry
3. Press the address book **To** or **CC** pushbuttons, as appropriate.

c) Accessing the Address Book Outside WigWam 2

The Address Book is stored in a file called ADDRESS, in the WigWam 2 directory. Each entry is stored on a separate line, with the Name, Comment and Address fields stored in that order, each field separated by a tab. When you make changes to the Address Book, the file is backed up to ADDRESS.OLD.

Contents **64**

Chapter 5 ***Handling Files***

CompuServe and Cix handle their files in radically different ways. Cix holds files in file lists attached to Topics within a Conference. CompuServe holds them in Library Lists within the Forum, but unconnected to the message Sections. Although much of the file-handling process within WigWam 2 is similar, it is probably best to deal with these services separately.

5.1 *Libraries on CompuServe*

Every Forum has Libraries associated with it. Libraries are places where the members and Sysops of the Forum store files for other members to download.

a) Downloading A Library List

To download a list of Files in a Library, select **Refresh Library List** from the **Section** menu. A list of all libraries in all the Forums which you have joined will appear. Highlight the library of interest and press **OK**.

WigWam 2 will then ask you for the 'Max Age'. You can restrict the length of the downloaded Library List by entering the maximum age in days of the files that should be listed – so specifying 30 will tell WigWam 2 to limit the list to files uploaded in the last 30 days. To fetch a list covering all files irrespective of the age, leave the field blank. By default, if there is already a listing on disk for that library, the window will show the number of days needed to refresh it, plus an 'overlap' of 3 days. For example, if the library on disk is 5 days old, the default 'Max Age' will be 8. The overlap period is used to ensure that no additions to the library 'slip by' between downloads: remember that a file's appearance in the library can be delayed if the Sysop takes time to make it available.

If you have already downloaded a list for the library that you specified, the new list will be added to the start of the old list. This makes it possible to add updates to the list from time to time.

WigWam 2 will then ask you for 'Keywords'. Again you can limit the number of listed files by narrowing it to include only those files that have the keywords you specify listed against them. Again, to obtain a full list, leave the field blank.

The library list will be downloaded the next time that you connect to CompuServe.

You can if you wish alter the 'overlap' period from its default of 3 days. To do this, use a text editor such as Notepad to edit the file TP.INI, which you will find in your WigWam 2 directory. Search for the string 'liboverlap=', and alter the number following the = sign to the desired number of days.

b) Viewing A Library List

To view a library list, select **View Library List** from the **Section** menu. A list of all available library lists will appear. Highlight the one of interest and press **OK**.

To download a file, highlight its name in the file viewer window, and press **Download**. WigWam 2 will ask you to confirm the name of the file that you wish to download.

You can use the **Find** facility to search through the text of the Library List for a specified word or phrase. The search is not case sensitive.

The **Close** button closes the file viewer.

You can continue to use other WigWam 2 functions while the File Viewer is active.

c) Downloading a Known File

If you know the name and library of a file, you can download it without referring to the file viewer:

1. Select **Download File** from the **Section** menu
2. Select the library from the list displayed, and press **OK**.
3. Enter the name of the file, and press **OK**.

The file will be downloaded the next time that WigWam 2 connects to CompuServe. Files are downloaded to the download directory specified in **Admin, Communications Settings**.

d) Uploading a File

Select **Section, Upload File**. You will be presented with a list of the libraries from the forums you belong to (you cannot upload a file until you have joined the forum). Choose the relevant library. WigWam will then display an Upload File dialog, asking you for:-

Filename

Use Browse to ensure the correct spelling. Remember that CompuServe is limited to a six-character filename (plus a three-character extension).

Type

CompuServe needs to know what kind of file you are sending - text, binary etc.

Keywords

It helps other CompuServe users to be able to search for files by keyword

Title

Not necessarily the file-name. It might be the name of the program contained in a zip-file

Description

A brief description of the file contents.

This information (along with your CompuServe ID, will appear in the *full* Library list, but not until the sysop has given approval. It is therefore a good idea to send the sysop an email message, explaining the file, and asking for it to be included.

5.2 File Lists on CIX

a) Downloading A File List

To download a list of Files in a Topic, select **Refresh File List** from the **Topic** menu, while you are viewing that Topic. The file list will be downloaded the next time that you connect to Cix.

If you have already downloaded the file list for a topic that you specified, the new list will overwrite the old one. This makes it possible to update the list from time to time, as files are added or removed.

b) Viewing A File List

To view a file list, select **View File List** from the **Topic** menu. To download a file, highlight its name in the file viewer window by double clicking on it, and press **Download**. WigWam 2 will ask you to confirm the name of the file that you wish to download.

Contents **67**

You can use the **Find** facility to search through the text of the File List for a specified word or phrase. The search is not case sensitive.

The **Close** button closes the file viewer.

You can continue to use other WigWam 2 functions while the File Viewer is active.

c) Downloading a Known File

If you know the name of a file, you can download it without referring to the file viewer. Make sure that you are in the appropriate Conference and topic, and then:

Select **Download File** from the **Topic** menu

Enter the name of the file, and press **OK**.

The file will be downloaded the next time that WigWam 2 connects to Cix. Files are downloaded to the download directory specified in **Admin/Communication Settings**.

d) Uploading a File to a Topic

Join the appropriate topic, and select **Upload File** from the **Topic** menu. You will be prompted to choose the file from a standard Windows file-picker, and to compose a message to be sent to the Conference moderators.

If you are a moderator of the Conference, please use the upload command in the Modify File List dialogue instead. This is because Cix does not require moderators to enter a mail message when they upload a file.

Chapter 6 Housekeeping

WigWam 2 is a busy working environment. Every so often, you will want to tidy up.

6.1 Keeping Control of the Message Base

One of the benefits of WigWam 2 is that the local Message Base allows you to see every new message in context. You can also retain those messages or threads that are useful to you, to build up your own private set of reference material.

Because you are likely to be downloading quite large quantities of messages from your remote services, you will need to maintain your message base regularly to stop it filling up all available storage. You do this by running the Prune command.

a) Pruning By Age

At its simplest, the **Prune** command (on the **File** menu) will erase all messages in threads which have not received any new messages for a predefined number of days. Please note that the date of an individual message is not the vital matter, but the date of the last message in that thread. You keep all messages in active threads. The 'aged' messages can either be deleted completely, or removed to an archive file which can then be taken off your system for storage.

b) Prune Options

WigWam 2 starts with a default of 30 days pruning. That is, if you run Prune without altering anything in the Prune Options dialog, all messages contained in threads which have not been added to in the last thirty days will be pruned.

But you are likely to have Conference/Topics or Forum/Sections which deserve special treatment. This dialog allows you to fine-tune the way Prune works. You may set options for each individual Section/Topic. Upgraders should have their settings retained.

New users will have a default setting of a 30-day prune.

To set up the configuration options for Prune, select **Prune Options** from the **Admin** menu.

In the Prune Options dialog, the listbox displays a 'default' line, and, optionally, a list of other Sections/Topics. Against each line is the prune setting for that item: the 'default' line applies to every Section/Topic which is not specifically mentioned in the list.

Adding a Forum/Section (Conference/Topic)

Press Add, and choose the desired Forum or Section (Conference or Topic) from the list. You can then alter the settings for it.

Changing Prune Settings

To alter the setting for a line, highlight the line and select one of the Section (Topic) Settings radio buttons. The settings work as follows:

Days

Messages are deleted from this Section/Topic once the thread that they are in has received no new messages for the specified number of days.

Never

Messages are never deleted from this Section/Topic, however old, even if they have been marked for deletion. (This defends you against accidental deletion.)

Delete Only

Messages are only deleted from this Section/Topic if they are explicitly marked for deletion

Remove dormant message files

Contents **69**

By default, Prune will always leave one message in each Section or Topic, even if according to the settings it should be deleted. Checking this box causes Prune to delete such Sections/Topics altogether.

Prune Filename

If a filename is entered here, all messages removed by Prune will be appended to the specified file for archival purposes. If that filename does not exist, it will be created. If this field is left blank, pruned messages will be deleted - pruned to oblivion.

Messages Marked for Deletion

In addition to Pruning by Age, any messages marked for deletion (See Chapter 4.2.d) will be removed the next time Prune is run, regardless of their age, unless the Section's Prune Option is set to Never.

Messages Marked for Keeping

Just as you can mark messages to be deleted, you can also mark them to be kept (See Chapter 4.2.e). Kept messages will not be deleted, regardless of their age, regardless of Prune Setting.

c) Running Prune

To initiate Prune, select **Prune** from the **File** menu. Choose **All Files** to prune your entire message base, or **Selected Files** to prune specific Sections. The **Timed** option will prune all files after the specified delay.

You may see a warning message stating that no special Prune settings are in effect. This is just a warning that no configuration lines exist in the Prune Configuration dialog apart from the 'default' line. Provided that you are happy for the default setting to be applied to all Sections, it is safe to continue.

The amount of time taken by Prune depends on the size of the message base, but can be considerable, so you may wish to run Prune over lunch or even overnight. The multitasking features of Windows will allow you to carry on with other work while Prune is running. You can cancel a Prune safely at any point by pressing the **Cancel** button provided, but Forums/Conferences which have already been processed will not be reversed. Prune will continue processing the section or topic in progress when you press Cancel.

d) Deleting Forums or Sections (CIS)

If you are no longer interested in a particular forum or section, use the **Delete Forum** command from the **Forum** menu to delete it, and ensure that the forum is not marked for further download, in **Actions, Sections to Collect**. There is no need to 'resign' from a Forum on CIS: just stop downloading messages from it.

However, if you wish to remove a section or forum from your visible message base, you can use **Resign Forum**. This will resign you *locally*. You can rejoin via the **Join Forum** dialog, with the **Register** button.

e) Deleting Conferences or Topics (CIX)

On Cix, you will remain joined to conferences until you explicitly resign them. So, WigWam 2 offers you two main ways of resigning. **Delete Conference** removes a conference or topic from your message base. Checking the **Remote Resign** in this dialog will follow up with a "resign" command on Cix.

Resign Conference will remove a conference or topic from your *visible* message base, but it will not delete it. You can rejoin via the **Join Conference** dialog, using the **Register** button. This will not stop messages being downloaded to the conference. You may wish to use this feature to keep certain topics away from prying eyes.

6.2 **Message Base Information**

You can obtain information on your message base via the **Show** command on the **Forum (Conference)** menu. The **Show** command has six variants:

Show New Messages

Lists the Sections or Topics containing unread messages, and the number unread in each Section/Topic.

Show Moderators

Not applicable to CompuServe. On Cix, you may be a moderator of a conference, or you may be a co-moderator, sharing duties with others. This command shows the names you have added as co-mods *within WigWam 2*. It cannot know the situation on Cix itself.

Show Joined Forums/Conferences

Lists all Forums and Sections, Conferences and Topics, and for each one, the number of unread messages and the total number of messages in each, shown as two numbers separated by /.

Show Unjoined Forums/Conferences

This displays a list of Conferences and Topics (Forums and Sections) from which you are downloading messages, but are not reading, because you have used the **Conference/Resign** command to resign without stopping the download of messages, or because you have not checked the Auto-Join box in **User Options**.

Show All Forums/Conferences

A simple list of all forums and conferences available in the Message Base.

Show Forum/Conference Information

This command shows information downloaded from the remote service about the current conference. For Cix conferences, this includes the moderators of the conference, and a list of *all* the topics in the conference (not just the ones you are joined to).

To update the information on a Forum or Conference, use **Get Forum/Conference Information**, also on the **Forum(Conference)** menu.

The Show command outputs the list to the WigWam 2 Status Window. You can copy the output to the clipboard by highlighting it and pressing the Copy button (Keyboard Shortcut Ctrl-C).

6.3 **Rebuilding the Message Base**

It is possible that under some unforeseen circumstance the internal data structures used by WigWam 2 to navigate the message base will become corrupted. You should suspect this if you become unable to view certain messages or forums (conferences), or if you see 'index file error' reported when reading messages or adding messages to the Message Base.

The Build command rebuilds all internal data structures from the messages themselves. To run **Build**, select **Build** from the **File** menu. You can choose either to build the entire message base, or a specific Forum or Section (Conference or Topic). You can also choose a 'timed' Build, which will initiate a complete build after a timed delay.

Although you can interrupt **Build**, you will not be able to use WigWam 2 until you have allowed it to run to completion. If you do interrupt a Build you will be warned about this.

Build can be a lengthy operation and you are advised to run it over lunch or even overnight, although the multitasking features of Windows will allow you to carry on with other work while a Build is in progress.

6.4 Resynchronising with the Remote Service

a) CompuServe

If you always read your Forum messages via WigWam 2, the High Message Numbers on CompuServe will stay in step with your WigWam 2 message base. However if you read messages on-line, or use a different reader for a period, the synchronisation will be broken. It is also possible for the synchronisation to be lost if a message download fails, for example because the telephone connection is cut off halfway through.

To bring things back into synchronisation, select the **Reconstruct** command from the **Actions** menu, and then do a **Selective Connect** to CompuServe. Reconstruct will generate a script to set all the High Message Numbers to come in line with your Message Base, and the script will be executed by the Selective Connect.

b) Cix

If you always read your Conference messages via WigWam 2, the pointers on Cix will stay in step with your WigWam 2 message base. However if you read messages on-line, or use a different reader for a period, the synchronisation will be broken. It is also possible for the synchronisation to be lost if a message download fails, for example because the telephone connection is cut off halfway through.

If you find yourself in this situation, the easiest way to recover is to log on to Cix straight away and type 'restore' at the main prompt. This will restore all message pointers to where they were at approximately 2am the previous night. You can achieve the same result by using the **Reset CIX msgs to 12 am** script command in WigWam 2, and then connecting to Cix (the script command is slightly mis-named!).

Restore does not alter mail message handling, so you should check for any incoming mail messages which arrived on Cix but were not downloaded.

If it is too late to use Restore, you can use the Reconstruct command to reset all the Cix message pointers so that they agree with those in WigWam 2:

1. Choose **Reconstruct** from the **Actions** menu
2. Answer 'Yes' to the question 'Reset messages in all conferences?'
3. Choose the '**Reconstruct**' script command
4. Select '**Full Download**' from **Actions/Connect to Cix**

Reconstruct creates a script file called POINT.MSG, which contains the commands needed to bring the pointers back into line. The commands are executed during a connection to Cix, when you have previously selected the **Reconstruct** script command. Reconstruct always appends commands to POINT.MSG. When it has run successfully, you should delete POINT.MSG from DOS.

Contents **72**

You can also use Reconstruct to 'plug holes' in your message base by downloading any messages which appear to be missing from your Topics. This can be useful if you suspect that some messages were lost during a download a few days ago. Note however that this will also plug any holes created by Prune, so that the download may be bigger than you expected. If you're feeling brave, and you understand what this process is doing, you might want to edit POINT.MSG (using **File/Edit Any File**) to remove less important Topics from the list.

To use Reconstruct to plug holes in the message base without resetting pointers, proceed as above but in step 2, answer **No** instead of **Yes**.

Chapter 7 More WigWam 2 Features

WigWam 2 offers more facilities for manipulating your message base, acquiring information from the remote service, and other purposes. Some of these apply only to one service or the other, but others apply throughout WigWam 2.

7.1 General Features

a) View/Edit Any File

The **File** menu contains commands to allow you to **View** or **Edit Any File** accessible from your PC. It can be sometimes be useful to refer to a file while you are using WigWam 2, and these commands save you the trouble of starting a separate application. The **Edit Any File** command calls up Microsoft's WRITE application, which can be assumed to be on any Windows user's hard disk. If not, please re-install.

The advantage of using Write is that it will cope with any file, of any size. The disadvantage is that it is capable of re-formatting text files which should not be re-formatted.

When Write opens, you will be offered the choice of converting the file to Write format, or "No Conversion". Choose "No Conversion". This will leave the file in the same format as before. Most of the files you will be dealing with in this way will be WigWam-related text files (scratchp.old etc.). Many of these files depend on the absence of formatting characters.

b) Notes

WigWam 2 maintains a 'notes' file in which you can keep personal notes. You could use this as a 'to do list', for example, or to write notes on particular subjects of interest which are covered in the Forums you follow, or to gather together snippets from your message base. To call up the user notes file, select **Edit Notes** from the **File** menu. You may cut and paste, to and from your Notes.

c) Review

We have touched on Review in *Chapter 4 Reading and Writing* but it deserves more consideration.

At any time, you may check through the list of actions due to be carried out the next time you blink. This is extremely useful for guarding against repeating yourself, and can protect against wrongly typed on-line commands.

WigWam 2 holds a script file of pending actions for each service (for reference, it has the suffix .BSC, and is prefixed by the name of the service). Choosing **Actions, Review** (or clicking on the associated Toolbar tool) will offer you access to each service. A list box will appear, in which the waiting commands are listed (if there are no waiting commands, the listbox will be empty).

To edit a command, highlight it and press **Edit**. To delete a command, highlight it and press **Delete**. When you have finished reviewing, press **OK** to save the changes you have made, or **Cancel** to abort them (pressing **Cancel** will abort *all* the changes you have made in the Review session).

When working with the message editor in Review, pressing **OK** will save the edited message. Pressing **Cancel** will abort any changes made to the message, and pressing **Delete** will delete the message.

If you wish, you can automatically invoke Review immediately before a connection to Cix. To do this, check the **Auto Review** box in **View/User Options**.

d) Show Pending

Contents 74

When you reply to a Forum message, or comment on a Conference message, WigWam 2 will display a red R symbol beside that message. If you can't remember what you wrote, you can highlight the message, and choose **Show Replies (Show Comments)** from the **Section (Topic)** menu to have a reminder.

If you have written a Composed or Say'ed message, you can choose **Show Says** from the same menu.

e) Involvement Threads

When a thread contains a message from you, its header will take on a different colour (in the thread window) from the rest of the messages. To configure that colour, use **View, Colours**. Please note that this feature will not be activated until your message has *returned* from the remote service, to be displayed in your message base.

Upgraders should also note that messages from previous versions of WigWam 2 will not take on their correct colouring until a build is carried out (**File, Build**).

f) Key Macro

WigWam 2 offers the facility to record and play-back sequences of key-strokes/mouse clicks. Its operation is simple; select **Key Macro, Start Record** (Keyboard Shortcut F7), run through the operation you wish to record, and select **Key Macro, Stop Record** (Keyboard Shortcut F7) when you've finished. Then, select **Play** (Keyboard Shortcut F8) to repeat those operations. If this operation is one you will wish to repeat often, select **Save** to commit this macro to disk. It will be saved in the form *.kbd. If macros are saved to the WWMULTI2 directory, they will be listed at the bottom of the **Key Macro** menu. If you have saved them elsewhere (perhaps to floppy disk) you will need to **Load** them before you can use them.

Macro Buttons

If you save your macros in the form MACRO1.KBD, MACRO2.KBD etc., *and* create matching bitmap graphic files in the form MACRO1.BMP, MACRO2.BMP etc., and they are saved to the WWMULTI2 directory (or whatever directory you are using for WigWam 2), then those bitmap files will appear as buttons on the Toolbox. They can be moved to the Toolbar like any other button. When clicked, the macro will run, as if you had chosen it from the **Key Macro** menu.

You can create appropriate bitmaps with MS Paintbrush, or any other graphics program. They should be about 27x27 pixels. There is (currently) room for three extra buttons on the toolbox.

Caution with Macros

There are limitations to the macro system. For instance, they will not operate in circumstances where WigWam 2 switches tasks (i.e. when WigWam 2 calls another program or sub-program.) Examples of this are Import Messages, Prune and Terminal (Connect).

In addition, many of WigWam's operations require the user to input specific keystrokes. If those keystrokes always remain the same, then a macro may help. If not, a macro will produce unwanted results.

Macros are not intelligent; they do not know what you want them to do. They will simply repeat what you did when you recorded them. Please take care that you use your macros in the same position you recorded them. Otherwise, a succession of spurious keystrokes may find their way into unexpected places. It would be wise to watch the operation of your newly-recorded macros a few times, to ensure that they don't misbehave.

g) Modify Forum/Conference

Contents **75**

This command, found in the **Admin** menu, is a purely local affair. It is really designed for multi-user versions of WigWam 2, but it can be used to re-align your message base with circumstances on the remote service.

None of the buttons will be of any use to you in this single-user version, but some of the checkboxes are relevant.

Read Only

When a service conference/topic has been flagged Read-Only, your message base should pick this up (the file containing messages will have the extension ".r"). If not, you can flag your own version of it with this check box.

Alternatively, you may have created a pseudo-conference (perhaps you want to store messages where you can read them, and a false conference is your way of doing this). You will not want to post messages from this conference, so you should flag it Read Only.

Moderate

If you are a Moderator of a conference on Cix, you will need to tell your local message base about this - otherwise, the **Modify File List** commands will not work.

7.2 More Features for CompuServe

a) The High Message Number (HMN)

Although WigWam 2 deals with messages on a section-by-section basis, CompuServe gives each message in a forum a unique number. Messages are numbered in chronological order. Between sessions, CompuServe remembers the highest message number that you have read in the forum (this is known as the High Message Number, or HMN). The fact that CompuServe only remembers one number per forum, rather than one per section, restricts your download strategies to some extent.

For example, you might wish to download just one section of a forum during the week, and then catch up on other sections at weekends. However, messages will still have been posted during the week, and you might download them all next weekend. You might therefore do better to leave all sections selected for every download, and just steel yourself not to read the less important messages until the weekend. The alternative is to modify the HMN.

b) Modifying the HMN

If you wish to modify CompuServe's High Message Number for any reason, you can use a WigWam 2 Script Command. Select **Script** from the **Actions** menu, and then choose **High Message Number** from the picklist. You will be asked for the Forum name, and the number to which the HMN should be set – enter "L" to set it to the highest message available (in other words, you don't want to read any messages posted before that moment, just those posted later).

Bear in mind that the HMN applies to the Forum, not a Section. Setting the HMN too high might miss out a quiet Section entirely. Setting it low (in order to capture that quiet Section), will include all the messages in a busy Section.

This **Script** Command can be useful when you join a new forum. The first Newsflash will show you, at the bottom, the number of the highest message in the forum. You can use the HMN Script Command to control the number of messages that you download the first time you access the forum – set it right back to get a large message backlog, or close to the highest number to get a small one.

WigWam 2 was primarily designed to handle Forums, Libraries and Personal Mail as efficiently as possible. However it is also extensible. WigWam 2 contains features which enable users to write scripts that will make other features of CompuServe

Contents **76**

accessible to WigWam 2, and to integrate those features into WigWam's message base.

In this chapter, we will cover the use of script commands once they have been written, and describe some script commands which are supplied with WigWam 2. These scripts are useful in their own right, and also act as a guide to those who would like to write their own. Many of the scripts are based on user-contributed Tapcis scripts, modified to work with WigWam 2. The work of the authors is gratefully acknowledged.

Technical details of the Script Language will be found in Appendix B.

c) Running a Script Command

To run a script command:

1. Select **Script** from the **Actions** menu (Keyboard Shortcut Ctrl-S).
2. Select the desired script from the list and press **OK**
3. Complete any dialogs displayed by the script as required

The script will be run the next time WigWam 2 connects to CompuServe.

d) Supplied Script Commands

The following script commands are supplied with WigWam 2. The ones listed in italics produce their output as a series of messages, which WigWam 2 will add to dummy 'forums' so that they can be read in the same way as other messages. The others create files in the download directory, as described.

Script

Function

What's New on CIS

Downloads Online Today's information on What's New

Download from MSL

Downloads the specified file from MSLIB (Microsoft's Library)

Download from MSKB

Downloads the specified file from MSKBLIB (Microsoft's Skill Base Library)

Get PCWeek Stories

Download summaries of PC Week items

Get Billing Info

Fetches current billing information

Get Billing History

Fetches billing history for the last 12 weeks

Hurricane Warnings

Fetches the current East Coast Severe Weather Warning

Ebert's Movie Reviews

Fetches Roger Ebert's Movie Reviews (approx. 40 two-page reviews)

Online Today Daily Edn

Fetches Online Today's daily computer news roundup

WigWam for CompuServe

Contents 77

Online Today - One Article

Today's article only.

US Weather Maps

Downloads USCW.GIF and USFW.GIF (see below)

UK Weather Maps

Downloads UKCW.GIF, UKFW.GIF and UKSAT.GIF

European Weather Maps

Downloads EURCW.GIF and EURFW.GIF

Weather Maps

The weather maps listed above are downloaded in GIF format and are suitable for viewing with a VGA monitor. The files are as follows:

File Name

Description

xxCW.GIF

Current Weather Map

xxFW.GIF

Forecast Weather Map

xxSAT.GIF

Satellite Photo (UK only)

e) Built-In Scripts

The following scripts are accessible from the Script Picklist, but are mainly used from other menus – they are built in to the underlying operation of WigWam 2:

Script

Function

Download File

Download file from library given name and library name

Download Library List

Download Library List given Library Name, Max Age and Keywords

Join Forum

Join Forum, given name

Update Section Names

Performs the equivalent of re-joining a forum which has been re-arranged, without going through unnecessary procedures (much quicker).

Download Forum List

Download List of Forums to specified file

Set High Message Number

Contents 78

Set HMN, given Forum Name

Send Binary Mail

Send Binary Mail, given addressee and file name

7.3 More Features for Cix

a) Resumes

Actions, Resumes gives access to details on CIX users, as uploaded by them (and you).

When you enter the dialog whilst viewing a CIX message, Resumes will look for the resume of the author of the current message.

If you do not have that user's resume, the **View** button will be greyed out.

The buttons operate as follows:-

View

If you have the resume you want (the nickname be in the list, without any asterisk), highlight it and press **View**. You may print from the viewer.

Get

If you do not have the required resume, or you wish to up-date an existing one, highlight the nickname, or enter it in the box, and press **Get**. The resume will be gathered during your next blink.

Delete

To get rid of an unwanted resume.

Edit

To edit (or view) your own resume. If you want your resume replaced on CIX, press **OK** within the editor. Your resume will be uploaded with your next blink. If not, press **Cancel** (any changes you have made will be lost).

If you have already downloaded a number of resumes, either manually, or via another OLR, place them in the %RESUMES sub-directory, renaming them (if necessary) in the form <nickname>.res. Then, within WigWam 2, run **File, Build, Resumes**, to make them available .

b) Billing

Actions, Billing allows you to keep track of your on-line charges, translating your requests into the appropriate commands for the remote service.

Selecting this option will show you a dialog, offering a list of months/years. If there is an asterisk (*) beside that month, then you do not have a bill for that month.

The buttons are as follows

View

If the month/year does not have an asterisk, highlight it and press **View** to see the details. You may print the bill from the viewer.

Get

If you do not have the bill for a certain month/year, or you wish to double-check one you do have, press **Get**. WigWam 2 will retrieve that bill on your next blink.

c) Extended Script Commands

Contents **79**

Note that some of these commands are normally handled by the menu items described above rather than by using the script command directly.

Reset Cix msg to 12am

This command resets all Cix message pointers to their position at the previous midnight. It is a useful way to recover from a failed message download.

Reconstruct

Uploads and runs the POINT.BSC script created when you run **Reconstruct** from the **Actions** menu. WARNING. This can produce very large downloads.

Show all/new/conf

Similar to the SHOW menu command, but operates on Cix rather than on your local message base. You can choose whether to see all Conferences on Cix, those in which you have messages waiting, or those to which you are joined (whether or not they have new messages in them). You must also specify a local filename.

Download some messages

Downloads messages from the current topic between the first and last numbers you specify, and saves them in a local file whose name you must also specify.

Add msgs to scratchpad

This is similar to 'Download some messages', but adds the messages to your scratchpad so that they get processed and added to WigWam's message base.

Get contents of ARC/ZIP

Files a list of the contents of an ARC or ZIP file in the current topic. You will be prompted for the name of the file, and a local filename.

Get profile for editing

Similar to your resume, your profile stores the various options you have set on Cix (e.g. whether to display a list of unread mail when you log in). Full details of the contents of your profile can be found in your Cix manual. This command will prompt you for a local filename under which to save the profile.

Replace profile

Uploads the specified file to Cix and makes it your profile.

Enter absence

Allows you to specify which dates you will be absent from Cix. You must enter the first and last dates of your absence in the form dd/mm/yy. Anyone who sends a mail message to you will see a notice of your absence between the dates you specify.

Copy message

Allows you to copy a message to another Conference. You must specify the message number and the Conference and topic to which you wish it to be copied.

Find file

Searches Cix for the filename you specify. The results are saved into a file and downloaded - you must also specify a local filename.

Contents **80**

Quick search, this Topic

Performs a quick search for the specified string, and downloads the results - a list of message numbers and the line in which the search text appears. You must also specify a local file in which to save the messages. A quick search only searches those messages posted in the last day.

Full Search, this Topic

As above, but searches the entire Topic, from message #1

Full Search, Full msgs

As above, but will download whole messages containing the specified string

Upload and run script

Uploads and runs a Cix script - note that this is different from a WigWam 2 script. See your Cix manual for information about writing and using Cix scripts.

Rejoin Cix resigned topic

Joins a single Topic in the current conference which you have previously resigned. You are prompted for the name of the Topic.

Rejoin local expired topic

Downloads a single message from the specified conference and topic. This is useful if the topic has been deleted from your local message base and you wish to recreate it.

Say in local expired topic

Does a 'Say' in a conference and topic, given the conference and topic name. It is assumed that you are a member of the conference on Cix, but do not have any messages stored in your message base for the particular topic.

Join & recent

Joins the Conference, downloading the specified ('recent setting') number of messages from each Topic.

Set Cix option

Sets the specified Cix option for the duration of the next connection to Cix.

Send CIX Command

You will be prompted for the CIX command, which will be issued at the Main: prompt

Manual Operation

Causes the next connection to Cix to pause in order to let you carry out operations manually on line. Type RESUMEBLINK to resume automatic operation.

Get Original Message

Like the **Original** command in the **Topic** menu, except that this will find the original message on Cix, when you may not have it in your local message base.

Join Conference

Equivalent to **Join Service Conference**.

Resign from Conference

Resigns the conference on CIX, but leaves the local message base intact

Withdraw message

Contents 81

Same as **Withdraw** in **Topic** menu

Withdraw CIX & Local

Performs a Withdraw on CIX and downloads a confirmation of withdrawal.

Download Flist

Now better handled via the **Topic** menu

Download File

Ditto

Download FDir

The FDir is essentially the same as the Flist, but lists files in the order in which they were uploaded. As soon as a file is uploaded to Cix, it is listed in the FDir, but does not become available to all participants until it is added to the Flist. Moderators can download files from the FDir.

Get Billing Information

Now better handled via **Actions** menu

Upload File

Better handled via **Topic** menu

Download a Resume

Better handled via **Actions** menu

Get Own Resume

Ditto

Replace Resume

Ditto

Get All CIX Topics

Discovers all the dormant topics in conference you are joined to, and downloads the last two messages in each, to wake up your local message base.

Set CIX back n Days

Reset CIX pointers a given number of days.

If you have a procedure, not on this list, which you perform regularly, you might wish to write your own script, and add it to the list. (See *Appendix C Technical Information*)

d) Extended Mail Commands

The **Script** dialog contains a number of commands to add to those in the **Mail** menu:

MAIL: Upload file

Upload a file to your private mail directory, from where you can send it to individual Cix members. You will be prompted for the filename to upload. (This function is better done via the **Mail** menu)

MAIL: Send Binmail

Sends a file already in your private mail directory on Cix to another Cix member. You must specify the recipient and the name of the file you wish to send. You should also notify them in a mail message. (This function is better done via the **Mail** menu).

WigWam for CompuServe

Contents 82

MAIL: Download file dir

Downloads a list of files in your private mail directory. Prompts you for a local filename. (This function is now done automatically on each blink)

MAIL: Download file

Downloads the specified file from your private mail directory on Cix. (Better .handled via the File list function of the **Topic** menu)

MAIL: Rename file

Renames a file in your private mail directory on Cix. You must specify the existing filename, and the new name which you wish to assign to the file.

MAIL: Erase file

Erases the specified file from your private mail directory on Cix.

MAIL: Export file

Exports the specified file from your private mail directory to the current topic.

MAIL: Clear read

Deletes mail messages which you have already read from Cix. This is non-reversible! (Quicker through the **Mail** menu)

MAIL: Mark mail unread

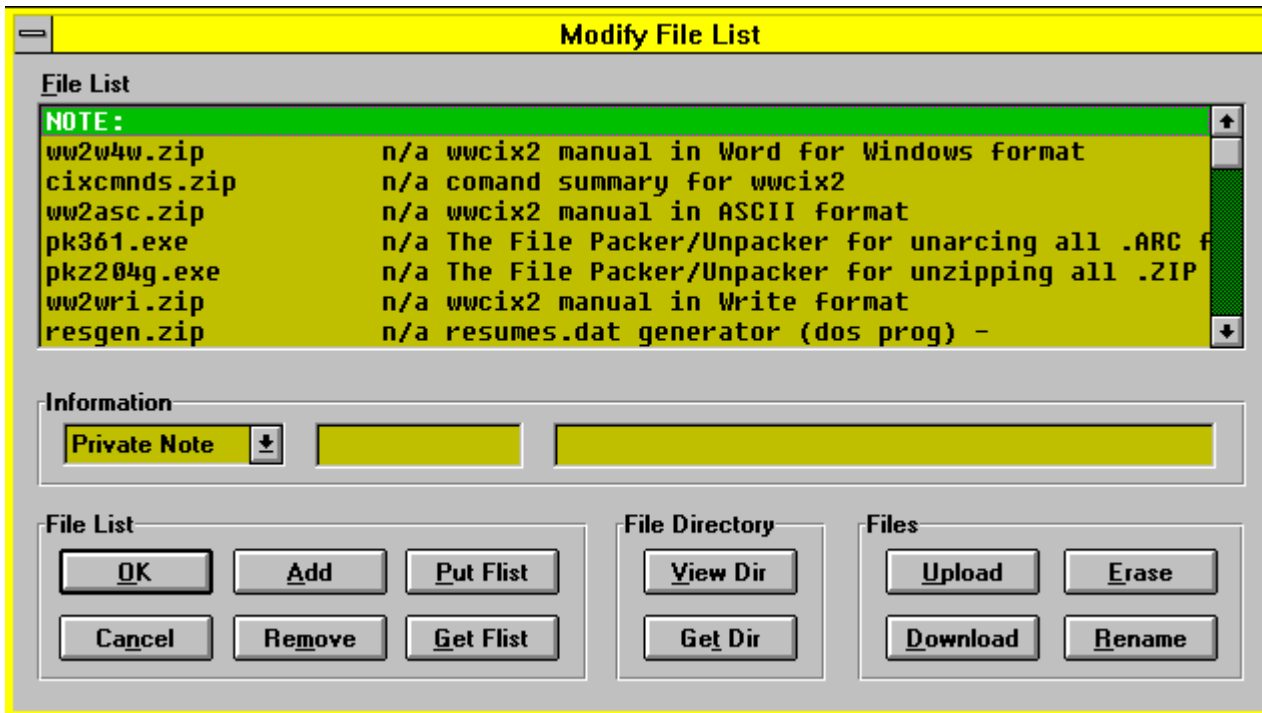
Mark a particular mail message on Cix as unread, so it will be downloaded on your next automatic connection. You must specify the number of the mail message. You may wish to use this if you read a mail message during a manual connection.

MAIL: Delete message

Deletes an individual mail message from Cix, whether you have read it or not. You will need to supply a message number. Please note that you can't recover a message once you have deleted it.

e) Moderating Conferences

The **Modify File List** dialog, available through the **Admin** menu, offers Cix moderators the facility to control their file lists through WigWam 2.



Before using it, you must tell WigWam 2 that you are a moderator. Do this via **Admin, Modify Conference** and check the **Moderate** flag with the conference in question highlighted. If this doesn't work (it sometimes doesn't), use Add Mod to add yourself as moderator. *Then* check the Moderate flag.

The **Modify File List** Dialogue commands are grouped into four sections

File List

You can fetch a copy of the File List from Cix by pushing **Get Flist**. Once you have edited it to your satisfaction, transfer it back to Cix by pushing **Put Flist**. Note that pressing **OK** will save any changes you have made to the file list locally, but will not transfer them back to Cix: only **Put Flist** will update the Cix copy.

File Directory

You can fetch a copy of the File Directory (Fdir) from Cix by pushing the **Get Dir** button. Files which have been uploaded to the topic will appear automatically in the Fdir, awaiting the moderator's decision to place it in the Flist. The directory will be fetched the next time you connect to Cix. Once the directory has been collected, you can view it by pushing **View Dir**.

Files

The **Upload, Download, Rename and Delete** buttons are mapped to script commands, which will be actioned the next time you connect to Cix.

Information

Use this line of fields to enter new files into your topic's Flist. The left-most field contains a number of "types" of information. Most of these are self-explanatory, but the "FilePool File" type should be explained. This references a file in Cix's FilePool, and makes it available in your Topic's Flist. You don't need to upload it again.

Enter the File name in the second field, and the Description in the third. Press **Add** to include the line in the Flist.

f) Other Moderator Commands

WigWam 2 contains the following script commands which are provided specifically for moderators, in addition to the commands dealt with above. The commands are run in the normal way: select **Script** from the **Actions** menu, and then choose the required command from the list. Moderator script commands are grouped together, and prefixed by 'MOD:'

Name

Function

MOD: Withdraw Message

Withdraw current message (anybody's). This script will also send a mail message to the offending (offended) user. In conferences which you moderate, it's quicker to use **Topic, Withdraw** (Keyboard Shortcut W).

MOD: First Say

Posts a "seed" message in a new topic, so that other users of OLRs will have something in their message base to reply to.

MOD: Add This Person

Add a participant to your conference, and notify that person that this has been done. You will be prompted for which conference.

MOD: Export to FilePool

Exports the named file from the current topic's file directory to the FilePool

MOD: Get Directory

Gets an Fdir from your topic. This is easier via **Modify File List**

MOD: Add Participant[s]

Add a participant (no mail message sent)

MOD: Remove Participant

Remove a participant

MOD: Create Open Conference

Creates a new conference, of which you will be moderator. Obviously, you need not be a moderator before using this command.

MOD: Add Topic

Add a new topic to your Conference

MOD: Add Moderator

Appoint another Cix user to share the work of moderating.

Contents 85

MOD: Remove Moderator

Sack a fellow moderator.

MOD: Upload File

Easier via **Modify File List**

MOD: Rename File

Ditto

MOD: Erase File

Ditto

MOD: Replace Flist

Ditto

MOD: Download Flist

Ditto

MOD: Toggle Read Only

To change the read-only status of your conference. This will not affect your ability to post to the conference. Cix knows you are a moderator and will allow you to post messages.

Note that the 'Moderator' flag *must* be set correctly for the **Topic/Upload File** and **Modify File List/Upload** command to work properly. This is because Cix handles the file upload function differently depending on whether or not you are a moderator of the conference concerned.

g) FTP

FTP (File Transfer Protocol) is a means of finding and accessing files from a huge number of sources, their only common denominator being their connection to Internet, which is itself a huge concatenation of systems based all around the world. CIX provides an Internet Gateway, and WigWam 2 provides a number of script commands to help you use it. To discover the potential, join cix/internet on CIX and download one of many guides to the Internet. You may also wish to practise on-line, to discover the practical meaning of these commands. Once you know what you are doing, these scripts should speed your efforts.

FTP: Open site

Opens an FTP connection to the specified site: use before the following FTP commands

FTP: Change directory

Issues a CD command on the previously opened FTP connection.

FTP: Read directory

Fetches a directory listing of the specified directory to a local file

FTP: Get file

Fetches the specified file from the previously opened FTP site to the specified local file name

FTP: Get multiple files

Fetches multiple files using the 'mget' command.

FTP: Close site

Contents **86**

Closes the FTP connection: use after the above commands.

FTP: Find Files

This script using the archie facility on src.doc.ic.ac.uk (Imperial Colleges Archie server) searches FTP sites for filenames that match the one specified, (wildcards are acceptable). It builds a file up on CIX containing the sitename, path and filenames that match. That file is downloaded to the download directory, and is called archie.lis

FTP: Batch Get

To use this script you need to provide 2 parameters, first the sitename where the file can be found, and second the full path & file name of the file on that site. Sitenames, and path/file names can be obtained by using the FTP; FInd File commands. Once this command is uploaded, and the blink is over, cix will go off and try to get the files from those sites and put them in your local internet directory. No longer do you have to wait online while cix gets the files.

FTP: Batch Download

This script will download all the files in your private internet directory obtained from FTP sites by using the FTP: Batch Get command above. After downloading the files this command will delete them from CIX. Typically it will take cix 30 mins to an hour to process your batch commands.

Please note that your FTP commands should be issued in sequence, without interruption by other WigWam 2 scripts or commands.

NB. If you check **Download FTP in Communications Settings**, any files waiting in your private internet directory will be downloaded automatically.

As with other types of scripts, you may find it helpful to add to the list with your own. Put these in a file called SPECIAL.CNF, in the \CIX directory. Provided you know how to achieve your aims on-line, you should be able to turn this knowledge into a script. (See *Appendix C Technical Information*)

7.4 **Cixnews**

Cixnews is the name of CIX's Gateway into Usenet (also known as Newsnet). If you are confused already, then this is good practise for venturing into this bewildering territory. Usenet is *not* the same as Internet, but many of the same organisations are connected.

WigWam 2 offers facilities for sending and receiving messages and mail on Usenet. Although this connection is achieved via CIX, WigWam 2 treats Usenet messages as a separate service.

You should be warned that downloads from Usenet are potentially huge. A guide to the many newsgroups (Usenet's version of conferences) available is beyond the brief of this manual, and beyond the competence of its writer. You are advised to join the cix/cixnews conference on CIX to find out more. Within Cixnews, the news.announce.newusers newsgroup contains a great deal of useful information for the novice. Be warned, however, that messages in this newsgroup are in the order of 30k each.

Otherwise, suck it and see.

You may find the threading of Cixnews messages somewhat eccentric. Because of the way Usenet messages are posted, it is entirely possible to find comments posted *before* the messages they are commenting to.

a) Newsgroup headings

The groups distributed world-wide are divided into seven broad classifications: "news", "soc", "talk", "misc", "sci", "comp" and "rec". Each of these classifications is organised into groups and subgroups according to topic.

"comp" Topics of interest to both computer professionals and hobbyists, including topics in computer science, software source, and information on hardware and software systems.

"sci" Discussions marked by special and usually practical knowledge, relating to research in or application of the established sciences.

"misc" Groups addressing themes not easily classified under any of the other headings or which incorporate themes from multiple categories.

"soc" Groups primarily addressing social issues and socialising.

"talk" Groups largely debate-oriented and tending to feature long discussions without resolution and without appreciable amounts of generally useful information.

"news" Groups concerned with the news network and software themselves.

"rec" Groups oriented towards the arts, hobbies and recreational activities.

WigWam 2 translates these headings into conferences (or Forums, in CIS Mode), and the sub-groups into Topics (or Sections).

Chapter 8 Terminal & Processing Downloads

8.1 WigWam Terminal

WigWam Terminal is the communications program used by WigWam to interact with remote services. In fact there is a separate system for connecting to each service, but their operations are similar. It is also possible to use the program in 'manual' mode if you wish to go on-line interactively.

a) Using Terminal in Manual Mode

To log on to a service interactively using Terminal, select **Manual Connect** from the **Actions** menu. You will be asked which service you wish to use. WigWam Terminal will dial and enter your user name and password (nickname and password). It will then 'hand over' to you. When you have finished, log off CompuServe by typing OFF or BYE (BYE works on Cix, too), and close Terminal.

WigWam Terminal supports the CompuServe B Plus file transfer protocol in manual mode and the zmodem protocol on Cix. You can therefore use it to download files from CompuServe or Cix, or to upload files from your computer. File transfers start automatically when you give the appropriate command to the remote system: there is no need to execute any command within Terminal.

After a manual connect to Cix, WigWam 2 will process any scratchpad downloaded.

b) Flow Control

Terminal always expects the modem to be configured for hardware (RTS/CTS) flow control. Note that any other communications software you are using may want to have software control. You should use your modem initialisation string to switch.

When Terminal starts, it checks to see that the modem is sending CTS: if it is not, the modem is likely either to be turned off or to be incorrectly configured. If the modem is not sending CTS, Terminal will display a message indicating that CTS is not active and asking you whether you wish to proceed. If you indicate that you wish to proceed, it will warn you that some characters transmitted by the remote service may be lost, because flow control is not correctly set. If you wish to achieve reliable operation, you must ensure that your modem is correctly configured for hardware flow control.

c) If Something Goes Wrong Online

When Terminal is executing a script, you can still type at the keyboard – so if disaster strikes and you need to take over, you can type an appropriate command to CompuServe or Cix, or log off by typing OFF or BYE (Bye on Cix), and close Terminal manually. You should not need to do this during normal operation of WigWam 2, and if you do need to, we would like to hear the circumstances so that we can correct the script.

d) The Capture Files

If you check the Capture box in the relevant Comms Settings dialog, Terminal will log all traffic to a capture file (called CISTERM.LOG, for CompuServe, CIXTERM.LOG, for Cix) in your WigWam 2 directory. This can be useful if you frequently walk away from your computer when Terminal is running, because you can then check the session later and make sure that everything went smoothly. It is also very useful, if you should have a script problem, if you can send us a capture file that illustrates the problem along with your report. However please be warned that the capture files can grow quite large!

WigWam for CompuServe

e) How to Avoid telling WigWam 2 your Password

Your password is not stored on your computer in plain text. However if you don't wish to enter your password into WigWam 2 at all, leave the field in the Comms Settings dialog blank. When Terminal logs on, it will pause when the service prompts for your password. You can then enter it by hand, and when you press Enter, terminal will take over again.

f) Logging on from Unsupported Networks (CIS)

You can use the same technique to log on from a network that is not supported by any supplied script. In Comms Settings, configure WigWam 2 to use the 'cisnode.scr' script (for CompuServe). Leave the modem dial string, the telephone number and the modem connect string blank.

When you request WigWam 2 to connect, Terminal will start up, and you should then type in the commands necessary to get to the Host prompt. When you reach the Host Name prompt, Terminal will take over.

You can send a 'break' (required by some networks) by pressing the end key.

g) The Usage Log

The file TPC.USE, in your WigWam 2 directory, holds details of the times at which you connected to CompuServe and Cix and subsequently disconnected. It also contains a list of all files downloaded. You can delete this file at any stage if you wish.

8.2 *The Message Converter (CIS only)*

The Message Converter converts Forum and Mail messages in standard CompuServe format to the internal format used by WigWam 2. It is run automatically when WigWam 2 finishes a session with CompuServe, to convert the message capture file, CIS.CAP, to a temporary file containing messages in WigWam 2 format (the message capture file is then saved and renamed CIS.OLD).

You can run the Message Converter manually if you wish. You may wish to do this under two circumstances:

If the download is interrupted by line noise, it is possible that you might wish to salvage messages from CIS.OLD that require editing before they can be correctly processed

You may wish to add some CompuServe messages which were not downloaded by WigWam 2 into your WigWam 2 message base.

The CompuServe message format does not include the forum name in the header. You must therefore put an entry into the input file to tell the Message Converter which forum the messages come from (WigWam Terminal adds the entries into CIS.CAP and CISTERM.LOG automatically). The entry should be a single line, consisting of the word #forum, followed by a space, followed by the forum name, for example

```
#forum ukforum
```

If the input file contains messages from several forums, put a #forum line before each batch of messages.

a) Running the Converter

Double click on the Message Converter icon in Program Manager. Select an input file, and enter the name of an output file. The output file will be created if it does not exist, and overwritten if it does.

b) Converting a Tapcis Message File

To convert a Tapcis message file:

Contents **90**

1. Add a #forum line as the first line in the .msg file, using your favourite editor or word processor. For example, if you want to convert your UKCOMP messages add the following as the first line in your UKCOMP.MSG file:

#forum ukcomp

If you're converting a Tapcis mail file add the following as the first line of your MAIL.MSG file:

#forum mail/messages

and at the end of the MAIL.MSG file add the following:

#mailend

If you use a word processor, such as Word For Windows, make sure to save the file as text only with line breaks. The WigWam 2 converter cannot read files that are not in ASCII format. You may want to save the file under a different name, e.g., UKCOMP.WW, to keep your original Tapcis file intact.

2. Double click on the Message Converter icon in Program Manager. Select the file that contains the #forum line, e.g., UKCOMP.WW.
3. When prompted, enter the filename to which you want the converted file saved. For example, if you just added a #forum line to your UKCOMP.WW file you may want to have the converted file saved as UKCOMP.NEW.
4. Click OK. Once the message file has been converted, the Message Converter closes and you are ready to add the messages to the WigWam 2 message base. How to do this is covered later in this chapter.

8.3 Import Messages (Addcon)

Import Messages (Addcon.exe) is used to add messages in standard WigWam 2 format into the WigWam 2 message base. It is called automatically when WigWam 2 finishes a session (with CompuServe, after the messages have been converted to WigWam 2 format by the Message Converter, see above).

You can use Addcon to add other messages into the message base, provided that they have previously been converted into standard WigWam 2 format (see above, *The Message Converter*). Select **Import Messages** from WigWam's **File** menu. The Message Import Options dialog appears. The settings are split between a Location group, which specifies where the messages should be imported to and from, and an Options group, which specifies how they should be processed. The Information group gives information on the use of the currently selected setting.

Once the settings have been set up correctly, press **OK** to import the messages. Pressing **Save** first will save the settings so that they will be filled in as the default values the next time you call up the dialog.

Provided that the import completes successfully, WigWam 2 asks 'Remove Scratchpad?'. Answering **Yes** will delete the file containing the messages that were imported.

a) Import Settings

Service

Enter CIS, CIX or CIXNEWS

Mail Name

Contents 91

The Section name under the 'mail' Forum which will be used for storing mail messages. This is usually 'messages'.

Filename

The pathname of the file containing the messages to import. Press **Browse** to find the file with a standard Windows file-picker.

Bix

Only applicable to specific multi-service versions of PowWow/WigWam 2.

GreenNet

Only applicable to specific multi-service versions of PowWow/WigWam 2.

Logging

Check this option to create a log file called ADDCON.LOG, containing details of any errors encountered during processing.

Insert Messages

Unless this option is checked, WigWam 2 will only import messages into a Section or Topic which are timestamped later than the newest message already in the Section or Topic.

Strip Header

This option instructs WigWam 2 to remove any header-only messages in a Section when importing new header-only messages into the Section. (only applicable to CompuServe)

Full Thread

This option instructs WigWam 2 to automatically mark headers for download if they are comments to messages already downloaded in full. (only applicable to CompuServe)

Usenet

Check this only if you are importing Usenet (CIXNEWS) messages.

Single Group

Not applicable.

b) Adding Tapcis Messages to the WigWam 2 Message Base

This section only applies to CompuServe. It follows up the advice on Converting Tapcis messages (see above)

To add Tapcis messages to the WigWam 2 message base:

1. Convert the Tapcis message file to WigWam's internal format by using the steps described above (Message Converter)
2. Select **File, Import Messages**. Specify the file that contains the converted messages you want to add. For example, if you converted the file UKCOMP.WW and saved it to UKCOMP.NEW, select UKCOMP.NEW.
3. Click the Yes button when Addcon asks you if you want to insert messages. Once all of the messages have been added to the WigWam 2 message base, Addcon will close. The next time you open WigWam 2, your messages will be available for reading. WigWam 2 will automatically join you to any new sections.

Appendix A Command Summary

WigWam 2 offers several different ways of achieving most actions - Menu commands, Keyboard Shortcuts and iconned Buttons. The following tables show how these methods tally. In addition to these, the normal Windows keyboard Menu controls operate. i.e., pressing Alt-F, X will eXit the program. Here, as on the WigWam 2 menu bar, the relevant letters are underlined.

File,

Menu Command

Keyboard Shortcut

Action Performed (*Figures in brackets refer to the chapter.section.sub-section where you can find more information on the subject*)

File

L



Allows the user to save Current Message, Current Thread, Bookmarked Messages or a range of messages to a file on disk. If the file already exists, the messages will be appended.

Quick File saves the current message only. (4.2.i)

Print

P



Allows the user to print Current Message, Current Thread, Bookmarked Messages or a range of messages. Note: You can set up the Print Font via **View, Font, Printer**. (4.2.i)

Quick Print prints the current message only.

Import Messages



Contents 93

This process allows you to bring CompuServe and Cix (& Cixnews) messages into your WigWam 2 message base - from another OLR, or from another source. (8.3)

Prune



WigWam 2 message bases can grow quite large. This command enables the user to keep control, by chopping off old messages (either into an archive file, or into oblivion). You may prune an individual Section (Topic), a Forum (Conference) or the whole message base. With a Timed Prune, you may set up the process to run at a more convenient time. Use **Admin, Prune Options** to fine-tune your pruning, Section by Section, Topic by Topic, if necessary. (6.1.abc)

Build

Occasionally, your WigWam 2 message base may become corrupted. Build will usually cure such problems. You can Build a single Section/Topic, or the whole message base. With a Timed Build, you may set up the process to run at a more convenient time. (6.3) You can also Build your Resumes directory (7.3.a)

View Any File

A simple file-viewer. (7.1.a)

Edit Any File

Calls up Write.exe. As a general rule, choose "No Conversion", and leave Fonts/Page Layout untouched, when dealing with WigWam 2-associated files. (7.1.a)

Edit Notes



A small notepad for jotting down ideas/reminders. You can copy chunks of messages to/from here. (7.1.b)

ExitAlt-F4



Leaves the program, returns to Windows.

Edit,

Contents **94**

Undo

Ctrl-Z

Reverses the last action, allowing the user to backtrack through messages. Note: Undo will not unmark messages, but can help you find them again, to unmark them yourself. There is a ten-keystroke limit. (4.1.h)

Copy

Ctrl-C



Copies the highlighted material to the clipboard. Within one of the windows or fields which accept input (the message editor, for instance), you will be given the opportunity to paste this material where you want it.

Find

Shift-F3

Searches for a text string in the currently-joined Section/Topic. (4.2.g)

Find Again

F3

Repeats previous search.

Search



Searches for a text string across Selected Sections/Topics, or across the entire message base. The "hits" will be Bookmarked, and the Bookmark Set reviewed via **Actions, List Bookmarks**.

The first button (left) initiates a full search across all Forums/Conferences. The second initiates a search in a selected Forum or Conference. (4.2.g)

Bookmark

B



Contents **95**

Bookmarks the currently-highlighted message, and adds it to the current Bookmark Set. The message will be visibly marked with a paperclip symbol, on the left of the thread window. You can create up to ten different Bookmark Sets. To switch from one to another, and to give them a name, use **View, Bookmark Sets**. You can also switch sets using the "hot-keys" Alt-1, Alt-2 etc.

(4.2.c)

Ignore

I



When you no longer wish to see any further additions to a tedious thread of messages, Ignore marks the thread containing the highlighted message. This command is purely local to WigWam 2. It does not stop messages being downloaded from the remote service. After all, you may change your mind. If you need to see those messages again, the same Ignore command toggles off again. Ignored messages will be marked in a different colour. You may choose which colour via **View, Colours**. 4.2.f)

Keep

K



Marks the currently-highlighted message for Keeping. A "key" symbol will appear next to it on the left of the thread window. When you prune your message base, such messages will remain un-pruned, however old they are. If you change your mind, the same command toggles. (4.2.e)

Delete

D or DEL



The reverse of Keep, Delete marked the currently-highlighted message for the chop. A "trashcan" symbol shows its status. The deletion will not actually happen until you run Prune. Again, this command toggles. (4.2.d)

View,

Show Toolbar

Show/Hide a line of iconned buttons beneath the menu-line. You have the option of showing Buttons only (On which case you can have more buttons on display, but no Section/Topic Box), Buttons & Section /Topic Box, or no Toolbar at all. (2.3.b)

Contents **96**

Show Toolbox



Show/Hide a boxful of icon buttons. You may transfer often-used tools from the Toolbox to the Toolbar (click 'n' drag). (2.3.a)

Show Status Box

Show/Hide a box containing information on the number of unread messages in - Current Thread, Current Section/Topic, All Sections/Topics. This box also shows the current Bookmark Set. (2.3.c)

Show Status Bar

Show/Hide a bar, along the bottom of the screen, containing the same information as the Status Box, except for the Bookmark info. (2.3.d)

Proportional Font

F

Switches between a Proportional Font and a Fixed Font (which can be chosen via **View, Font**). Fixed fonts are better for tables, lists, or text "pictures", but you may wish to read most of your messages in your proportional font. (2.2.b)

Font

Enables the user to set the font for Threads, Fixed-font and Proportional-font Messages (see above), for your Editor, Review window and for Printing. (2.2.b)

Colours

You can select the colours for various parts of your screen. There are settings for normal threads, ignored threads, involvement threads (ones which contain contributions from you), for the current highlight and for the message body itself. At any time, you may return to the default colours. (2.2.a)

Bookmark Set

Alt-0,1,2,3 etc.

Allows you to select the current Bookmark Set, and to edit the Set names. (4.2.c)

View Threads



Contents **97**

Views messages in Thread order, with full thread information. (4.1.c)

View Roots Only



Views the Roots of threads only. The remainder of the thread can still be accessed, either by pressing ENTER, to move to the Next Unread message, or by pressing Cursor Right, to expand the thread. (4.1.c)

View Chronologically



Views the messages in the order in which they were posted. (4.1.c)

Actions,

Connect

Ctrl-T (Full)

Ctrl-O (Selective)

Ctrl-Q (Manual)



Initiates a "blink". You will be asked which service you wish to use. There is a choice of Full, Selective, Manual or Timed. A Full Connection performs all requested actions and reads the forums as set out in **Select CIS Forums to Download** (if the connection is to CompuServe), or reads all joined Conferences (if the connection is to Cix). A Selective Connect performs all requested actions, but does not read the Forums/Conferences. A Manual Connection connects to the service, logs on, and leaves you at the Top Menu, or the Main Prompt, to type your own commands. A Timed Connection will perform a Full Connection after the delay you set. N.B. You should not use a Timed Connect unless you are sure about your comms setup. A failure can be expensive. (Chapter 3)

Review

F2

Contents 98



If you have second thoughts about a message you have written, Review gives you an opportunity to amend it, or to delete it entirely. If you have checked the **Auto Review** flag in **Admin, User Options**, Review will appear before each "blink". (7.1.c)

Sections to Collect



CIS Only Decides the pattern of your forum reading. Once you have joined a Forum, WigWam 2 will have a list of all the Sections in that Forum. You can decide to download any or all of these, either in Full, or just the Headers. You can also create a number of different downloading patterns to suit your particular CompuServe reading habits - e.g. Weekday/Weekend patterns, or Work/Leisure. (3.1.c)

Set CIS Options

CIS Only. Once you have set up the essential connect and logon details in **Admin, Service Setup** and **Communication Settings**, Set CIS Options dials up CompuServe and adjusts the on-line options to suit your settings and WigWam's way of working. Theoretically, you should only need to do this once for each Node, and for each Speed. In reality, CompuServe settings sometimes slip, and occasionally need refreshing. (3.1.a)

Billing

CIX Only To access details of your on-line charges, month by month (7.1.h) (For CIS, use **Actions, Scripts, Billing**)

Resumes*Ctrl-R*



CIX Only. To access resumes for Cix users, and to edit and renew your own. If you select this option whilst reading a Cix message, WigWam 2 will look for the resume of the author of the current message. (7.3.a)

Script

Ctrl-S



In addition to the commands on WigWam's menus, Toolbox and "hot-keys", there are a number of additional procedures possible

Contents 99

on CompuServe and Cix. WigWam 2 comes supplied with scripts to perform such procedures. In addition, there is a script language, allowing the user to create his/her own scripts. Existing users swap useful scripts in the UKCOMP Forum, Sections 10 and 17, and in the WigWam 2 conference. (Chap 7 & Appendix C)

Signatures



To add a sign-off line(s) to all messages. You may create one signature for messages to each service and one for Mail - applicable to all services. (4.3.e)

List Bookmarks



Shows a list of the messages belonging to the current bookmark set, and allows you to browse through them. (4.2.c)

Mark All Read

Marks all messages, in all Forums and Conferences, as Read. (4.2.a)

Remove All Bookmarks

Empties the current Bookmark Set, without deleting the Bookmark name. (4.2.c)

Remove All Ignore Marks

Removes all Ignore Marks, in all Forums and all Conferences. (4.2.f)

Mark Bookmarks

Once you have created a Bookmark Set, either by marking each one individually or by Searching, this command enables you to mark all the messages in the current Bookmark Set with one or other of the flags - Read, Ignore, Delete or Keep. (4.2.c)

Reconstruct

Searches for "holes" in your message base, and creates a file (called POINT.MSG - which will need to be run as a separate script) requesting a full download of those messages. On CompuServe, many older messages will have "scrolled" from Forums, so the result will tend to be incomplete. Even so, the resultant download, from any service, may be very large. (6.4.ab)

Forum/Conference,

Go

Contents **100**

Ctrl-J



Opens a Join Forum/Join Conference Dialog, enabling the user to move from Service to Service, Forum/Conference to Forum/Conference, Section/Topic to Section/Topic. N.B. Clicking the Right Mouse Button does the same. This is a local joining. To join a new Forum/Conference on the remote service, use **Join Service Forum (Join Service Conference)**. (4.1)

Next Forum/Conference

Ctrl-N



Move to the next Forum/Conference, in order of reading (See **Admin, Set Reading Order**) (4.1.d)

Previous Forum/Conference

Ctrl-V



Returns to previous Forum/Conference. (4.1.d)

Resign Forum (Conference)

Performs a *local* resignation, removing the Forum/section (Conference/topic) from the *visible* list of joined Forums/Conferences. This does not delete the messages, nor resign you from the Forum/Conference on the remote system. (3.1.d) To access a resigned Forum/Conference, use the **Join Forum (Conference)** dialog, **Register** button.

Show

Show, New Messages tells you how many messages remain unread, and in which Forums/Sections (Conferences/Topics). Show, Moderators is part of WigWam's multi-user setup. Show Joined Forums/Conferences lists Forums/Sections (Conferences/Topics) immediately available to you. Show Unjoined Forums/Conferences shows any Forums/Conferences in your message base which remain hidden perhaps because you were not Auto-Joined (see **Admin, User Options**). Show All lists all messages in all Forums/Conferences (across all services), Read or Unread. Show Conference(Forum) Information gives info on the current conference/forum (as downloaded from the remote service). (6.2)

View Service Forums (Conferences)

Shows a list of Forums or Conferences available on a remote service, and allows the user to select a new Forum/Conference to

WigWam for CompuServe

Contents 101

join. To ensure that the relevant Forum/Conference list is up to date, run **Refresh Forum List (Refresh Conference List)** (see below).(3.1.b/3.2.b)

Join Service Forum (Conference)

When you know the name of the Forum/Conference you wish to join, this option is quicker than Viewing the Forum list. (3.1.b/3.2.b)

Get Forum (Conference) Information

Delete Forum (Delete Conference)

Removes a chosen Section or Forum from your message base. In the case of CompuServe, this merely deletes the existing messages in that Section or Forum. It will not stop messages being downloaded, if that Forum/Section is marked for Collection (See Sections to Collect). For Cix, this command also offers you the option of resigning from the service conference (**Remote Resign**), preventing further downloads. (3.1.d)

Refresh Forum (Conference) List

Collects a new list of service Forums/Conferences. (3.1.b/3.2.b)

Section/Topic,

N.B. The menus and hot-keys in this sub-menu are quite different, depending on the status of CIS MODE.

Reply/Comment

R / C



Send a reply to the currently-highlighted message, addressed to the originator of that message. (4.3.a)

Compose/Say

C / S



Send a new message to the current Section/Topic (i.e. - start a new thread). (4.3.a)

Fetch Full Message

>

Contents **102**



CIS Only When reading Header messages, this marks the message for downloading on the next "blink". (3.1.f)

Withdraw Message

W



If you have posted a message on CompuServe or Cix in error, you can withdraw it on the next blink. You can only withdraw your own messages. (4.3.f)

Show Replies/Comments



When you comment on a message, a small R appears next to the message description line in the upper viewer window, to indicate that a reply (from you) is pending. You can select **Show Replies** to look at it quickly. (Only when that message is the current one - i.e. it is highlighted in the thread window.) (4.3.g)

Show Says

Views messages which you have "Composed" or "Said" - i.e. messages beginning new threads. (4.3.g)

Original

O



Seeks the message to which the currently-highlighted message is a reply. The entire thread can thus be followed back to its root. (4.1.g)

Next Unread

ENTER

Move to the next unread message. (4.1)

Next Bookmark

Shft-ENTER

Contents 103



Move to the next message in the current Bookmark Set.

Mark Message Read

SPACE



After marking the message read, the highlight moves to the next message (not the next unread). (4.2.a)

Mark Message Unread

U



Reset the unread marker on the currently-highlighted message. (4.2.a)

Mark Section Read (Mark Topic Read)



Mark all the messages in the current Section/Topic Read. (4.2.a)

View Library List

(View File List)



Look at Library Lists or File Lists you have already downloaded (via Refresh Library/File List - See Below). You can mark files in these lists for download at the next "blink". (5.1.b/5.2.b)

Download File



Not appropriate for CompuServe. Use View Library List (see above). On Cix, you can use this command to download a file from

WigWam for CompuServe

Contents 104

the topic currently showing (make sure you are in the right place, and that the file is there). (5.2.c)

Upload File



Upload a file to a File-list or Library

Erase File

CIX only Only appropriate for moderators - to erase a file from the topic's fdir

Refresh Library List

(Refresh File List)



Download or Update a particular Library List from CompuServe, or File List from Cix. (For CompuServe, if you have previously refreshed this list via WigWam 2, the Days field will default to the time since that last refresh (with a 3 day overlap), so that you can keep a complete Library List. Each new Refresh will be appended at the top of the list.) (5.1.a/5.2.a)

Skip

You may Skip the Current Thread, to the first message in the Section/Topic, to the last message, to a given message number, or a given number of messages backwards. In each case, the intervening messages will have their Read/Unread marker toggled. (4.2.b)

Goto

#



Move to a particular message number, within the current Section/Topic. (4.1.f)

Mail,

Address Book



Gives access to WigWam's Address Book. You can Send Mail from there; highlight the intended recipient and click the "To"

WigWam for CompuServe

Contents 105

button. (4.4.a)

Send Mail

M



Send an e-mail message. (4.3.a)

Send Fax



Connect to CompuServe's Fax Gateway, or Cix's Fax Gateway..(4.3.g)

Send File



Send Binary Mail to another CompuServe or Cix user. (4.3.e)

Tools, Management

There are a number of "Addons" for WigWam 2, to add functions that experienced users wanted, so they wrote them themselves. WigWam 2 provides a "hook" for such addons to hang on to. The Management dialog allows the user to install such addons, and to run them from within WigWam 2.

Key Macro,

Start/Stop Record^{F7}

Begin and end the recording of a Macro. (7.1.f)

Play^{F8}

Play back a macro.

Load

Load a macro from disk (in the form *.kbd)

Contents 106

Save

Save the macro you have just recorded to disk (in the form *.kbd)

Set Startup Macro

Record a macro which will run when you start up WigWam 2.

Aadmin,

Set Reading Order

Normally, WigWam 2 presents you with Forums and Conferences in alphabetical order. This command allows you to set up a customised reading order. It is not possible to control the order of Sections within Forums, or Topics within Conferences. (2.1.a)

User Options

Adjusts a number of user-specific settings, mostly concerned with the appearance of the screen. (2.1.b)

Service Setup

Adjusts a number of settings concerned with your connections and uploads/downloads. (2.1.c)

Communications Settings

Controls comms setups and download directory. (2.1.d)

Prun Options

Controls the detail of your pruning operation, Section by Section. (6.1.b)

Modify Forum/Conference

Affects Forums and Conferences *locally* only. (7.1.g)

Modify File List

CIX Only To manage the File Lists of Conference/Topics of which you are a Moderator. In such Topics, you should upload files from here, rather than from **Topic, Upload Files**. (7.1.g)

There are also some keyboard-only commands:-

Key

Action

+, -

Contents 107

Scroll Header Window

PgUp, PgDn

Scroll Message Text

Cursor Left

'Collapse' Thread

Cursor Right

'Expand' Thread

Spacebar

Mark Message or Thread as Read (depending on whether the thread is expanded or collapsed)

Enter

Step to Next Unread Message

Shift-ENTER

Step to next Bookmarked message.

Appendix B How It Works

...and what to do when it doesn't

This chapter provides a very brief rundown of the way that WigWam 2 works, and the files that are used. This should help you to recover when something goes wrong.

The .INI File

WigWam's configuration is stored in the file TP.INI, in the WigWam 2 directory. The path to TP.INI is defined in ASHMOUNT.INI. Upgraders should note that the TPINI environment variable is no longer used.

NB. There is a more detailed summary of the workings of these files towards the end of this Appendix.

The Storage of Pending Actions

When you compose a message, or reply, or perform any task to be carried out on your next connection, those actions are written to a file called CIS.BSC, in the \WWMULTI2\CIS\ directory, or CIX.BSC, in the \WWMULTI2\CIX\ directory. When you Review those actions, perhaps immediately before connection, the reviewed actions are copied to another file, also called CIS.BSC (CIX.BSC), but in the \WWMULTI2\ directory. Immediately before connection, these actions are collected into a sensible order (messages to one Forum/Section, or Conference/Topic placed together, for instance) in a file called REPLY.BSC.

If for any reason WigWam 2 gets cut off before it finishes uploading all the messages you have written, it will do its best to remember what has not been uploaded, and save it for processing next time around. Because there may be circumstances under which this will not work as planned, WigWam 2 creates a backup copy of REPLY.BSC before each connection. By default, it keeps 10 backups, named REPLY.001, REPLY.002 up to REPLY.010. Each time you connect, the oldest backup is overwritten so that you always have the last ten available. The number of backups is configurable: you can change it by altering the TP.INI setting 'replybackups' to the number of backups you wish to keep.

*You can restore a backup simply by copying it to the relevant *.BSC file. Alternatively you can pull individual messages out of a backup file and add them to the *.BSC.*

Online

The commands needed for connection and for on-line work are contained in the logon script (defined in the Service Script section of the Comms Settings dialog), which then hands over to the REPLY.BSC script.

If you are connected to CompuServe or Cix and the remote service is not responding properly to WigWam's commands, remember that you can type commands at any point. Try typing a CR (hit ENTER) and see whether the sight of a new prompt spurs WigWam 2 into action. If this does not work, the safest thing is to log off by typing OFF or BYE (on CompuServe) or BYE (on Cix).

It may be that you have discovered a problem with WigWam's scripting functions, in which case we would very much like to hear from you.

Problems with CompuServe

*Before you contact us, though, please check that CompuServe is properly configured by running the **Set CIS Options** command as outlined in Section 1.3. Remember that **Set CIS Options** should be run at each speed that you use to communicate with CompuServe, so if you use a fast modem that sometimes 'drops back' to 2400 baud, you must run Set CIS Options at 2400 baud as*

well, or configure your modem, via the init string specified to WigWam 2, not to accept connections at the lower speed. You should suspect a problem with the CIS options particularly if you have trouble downloading files. If CompuServe asks which protocol to use when downloading a file, you definitely need to run Set CIS Options.

Help us to help you

*If you have discovered a problem which is not solved by running **Set CIS Options**, please let us know and provide as much detail as possible. Mail us the REPLY.nnn backup file that contains the problem (see the section above for detail on REPLY.BSC backups). If possible, let us have a capture file (produced by checking the Capture box in the Comms Settings dialog) that shows what happens on line. If you are able to provide us with both of these, we should be able to resolve the problem very quickly. It is much harder to see what is going wrong if the description is just 'my script jams when I try to download the weather forecast'. All the scripts are thoroughly tested before release, and so it is likely to be a combination of circumstances that causes trouble.*

Pre-processing of CompuServe messages

The overall course of a connection to CompuServe is dictated by Script Files. When Terminal first starts, it follows the instructions in your logon script (as defined in the Comms Settings dialog) to log on. The logon script ends by 'chaining' to REPLY.BSC, which holds the messages waiting for upload, and script commands to carry out the other on-line transactions you have asked for (file downloads, library listings etc.).

For CompuServe connections, REPLY.BSC ends by chaining to CONFS.CIS, which holds the commands to download messages from the forums and sections that are currently selected.

Messages from CompuServe are captured in CIS.CAP. The entire session with CompuServe is also captured in CISTERM.LOG if you have enabled Capture.

Processing the Captured Messages

After a connection to CompuServe, the Message Converter is called to convert the messages to WigWam's internal message format. At this stage, the messages are in a file called SCRATCHP. Following this processing, CIS.CAP is renamed CIS.OLD. *If you suspect that not all the messages you download are reaching you, you should first check in CIS.OLD to see whether they are there. If they are in CIS.OLD, have a look in the corresponding WigWam 2 message file to see if they have made it that far. Check that the 'section' files contain the messages from CIS.OLD. If some are missing, run the message converter and Addcon (Import Messages) to add them in. (See Chapter 8.3)*

If messages are not reaching CIS.OLD

If the messages are not in CIS.OLD, you can double check what is happening by turning Capture on (in the Comms Settings dialog) so that you keep a complete record of WigWam's conversation with CompuServe. Cross-check the capture file against CIS.OLD: all the messages in the capture file should also appear in CIS.OLD. If they don't, you can if necessary run the message converter and Addcon (Import Messages) on the capture file itself.

For Cix, the messages go straight into the SCRATCHP file.

Import Messages (Addcon) is then called to process SCRATCHP and add the messages into WigWam's message base. After this process, SCRATCHP is renamed SCRATCHP.OLD.

In this case, check whether the messages you believe to be missing are in SCRATCHP.OLD

Check that you are registered in the forum/section (conference/topic)

WigWam for CompuServe

Contents 110

If the messages are reaching the WigWam 2 message files, you may not be registered in the Forum/Conference. There are some multi-user facilities built in to WigWam 2 which may have been accidentally invoked:

1. Choose the **User Options** command from the **View** menu. Verify that the 'Auto Join' box is checked, and check it if necessary. Press **OK**.
2. Quit WigWam 2 and restart.

If the forums and sections you wish to see are still not available to you,

1. Choose **Join** from the **Forum** menu.
2. If the section you wish to view is displayed, select it
- 2a If not, press **Register**, and enter the name of the forum.
3. Press **OK**.

*This should make the forum accessible if it is in the WigWam 2 message base. If it is still not accessible, select **Build** from the **File** menu. This will ask WigWam 2 to run through each message file in turn, to 'learn' what forums and sections are present.*

The Message Base

WigWam 2 Multi maintains a sub-directory for each service.

If WigWam complains that it is not configured for "MYDIR" service, it is because you have created a sub-directory called MYDIR beneath WWMULTI2. WigWam 2 treats any such sub-directory as a service. If you want a sub-directory here, prefix it with the percentage sign viz. %MYDIR. WigWam 2 will ignore such a directory name when checking for services.

The same trick applies to sub-directories below the Service directories. WigWam 2 will treat sub-directories (without the % prefix) as if they were Forums or Conferences.

Below these, WigWam 2 creates a subdirectory for each forum or conference. Each section or topic has its own file (its name is derived from the topic/section name). The filename has no extension - except in special circumstances - i.e. when the topic/section is marked as Read-Only. In this case, the filename has the extension ".r". In the same sub-directory, WigWam 2 maintains an index file (extension ".ind") and a threading file (extension ".thr"). These files contain information about the various flags (keep, delete, ignore, involvement) as well as the index and threading data.

*The build process, (**File, Build**) rebuilds these control files. Most problems with corrupt threads will be solved by a build. If a particular section or topic still proves troublesome, it might be worth deleting the *.thr and *.ind files, which will force a completely fresh build. This process will lose Keep and Delete flags.*

If all else fails, delete the file called CONF.WW and replace it with an empty 5-byte file of the same name, to force a complete build. (Use an editor; make a new file, press spacebar 5 times, SaveAs CONF.WW)

CONF.WW, in the WigWam 2 directory, holds details of the forums/sections and conference/topics available, and the number of messages in each.

USER.USR, also in the WigWam 2 directory, holds details of the messages that the user has read in each forum and section.

*If WigWam 2 protests that it is registered for single-user only, this is because it is finding more than one *.USR file. Delete all but one and all will be well.*

The CIS.UI subdirectory (sometimes USER.UI, or <nickname>.UI) is also used as a 'scratch' area to note

WigWam for CompuServe

Contents 111

particular messages that have or have not been read.

Deleting Sections or Topics in any other way than through WigWam may leave markers in USER.UI. If so WigWam will complain, loudly, that it can't find the message file. If so, delete all references to the Section or Topic from USER.UI, to correct the situation.

TP.INI

The file TP.INI contains a number of important settings. In addition, the file ASHMOUNT.INI contains a statement pointing to the path of the main WigWam 2 program files, and to TP.INI itself.

ASHMOUNT.INI

[ashmount]

path=

;the path to the main WigWam 2 directory

TP.INI

[tpopts]

prunefile=

;the filename (including full path) of the destination for pruning. If blank, pruned messages are deleted

scrpath=

;the path to script-files

encrname=

;the filename (with full path) for the encryption utility pointed to in User Options

decname=

;the filename (with full path) for the decryption utility pointed to in User Options

tpmsg=

;the path to the directory below which service sub-directories hang. Replaces environment variable SET TPMSG=

tpusr=

;the path to USER.INI (or <nickname>.ini). Replaces environment variable SET TPUSR=

version=

;version number (e.g. 2.00e)

type=

;type - may be WWCIX, WWCIS, WWMULTI, WWOUC or POWWOW

deldays=

;default age for pruning by age - applies to all forums/conferences unless explicitly set.

replyseq=

;the last REPLY.nnn backup.

replybackups=

;controls the number of copies of REPLY.BSC which are maintained (default=10)

replycomment=

;default YES. Adds ;-, comment lines to CIX.BSC (CIS.BSC) which enable Review to work.

Contents 112

networked=
;YES/NO - to enable sharing of data files
singlescript=
;for single-user use of multi-user versions
largeauto=
;obsolete
intcomm=
;obsolete
skipcomma=
;to sort out CIS usernames. Should be set to YES
newusers=
;allow login as "new"
pollperiod=
;network only
localmail=
;PowWow local setting
purge=
;remove dormant messages (in Set Prune Options)
netname=
;network only
virus=
;the filename (with full path) for virus scanner in User Options
traps=
;list of addons which will override menu items
allreview=
;PowWow only
openmods=
;PowWow only
addonmgr=
;redundant
exepath=
;path to all .exe files
debuglog=
;set to YES to log file open/closes to c:\debug.txt
[intcomms.<servicename>.1] *There will be one of these sections for each communication setting.*
description=

Contents 113

;service name (CIX, CIS, CIXNEWS)
port=
;comport
phone=
;service number (last number used)
speed=
modem to processor speed setting
mnp=
;redundant
bits=
;word size
parity=
;parity
stop=
;stopbits
dial=
;dial string
dldelay=
;delay before retry
init=
;init string
connect=
;connect string
hangup=
;hangup string
capture=
;capture log
arc=
;compress
downdir=
;download directory
modem=
;modem name
scriptname=
;logon script
directory=

Contents 114

;service directory
fetchmail=
;collect personal mail (CIS)
newslink=
;redundant
multiphone=
;service number including multi-phone options
maildir=
;download mail dir (CIX)
[service.<servicename>] *There will be one of these sections for each service.*
Name=
;nickname/ID
Pass=
;password
LibOverlap=
;Library overlap (days)
ForumFile=
;Sections to collect file (confs.sel)
CisOptions=
;has Set CIS Options been run?
[Addcon] *Last saved options in Import Messages dialog*
Service=
;source service
Mailname=
'mail "topic" name (usually messages)
Usenet=
;Usenet/Newsnet/Cixnews
NewsOne=
;if YES, Addcon will only convert Usenet messages into the first relevant newsgroup in the list (avoiding cross-posting)
Filename=
;source filename (not saved)
BIX=
;Bix only
GreenNet=
;greennet only
Logging=

Contents 115

```
;create addcon.log
Insert=
;insert out-of-sequence messages
StripHeader=
;strip old headers
FullThread=
;full thread
```

Separating Data and Program Files

You are strongly advised to make sure that WigWam 2 is working satisfactorily in a normal installation, before attempting to move it. If any problems arise it will be very difficult to determine whether they are due to the new location, or to some other installation factor.

WigWam is designed to operate in a single-tree directory structure. It should operate in a split installation, but Ashmount cannot guarantee a fault-free move. You may have particular problems with upgrades and with add-ons, which must assume a standard installation.

Assuming you wish to keep program files in D:\PROG, and message files in D:\DATA:-

1. Move all .EXE, .HLP and .DLL files to D:\PROG, plus <USER>.INI and <USER>.USR.
2. Move the rest (maintaining sub-directory structure) to D:\DATA
3. Create (or edit) ASHMOUNT.INI in D:\PROG to read: -[Ashmount]Path=D:\DATA----end of file---
4. Edit TP.INI (in D:\DATA) so thatexepath=D:\PROG ;(in tpopts section)tpmsg=D:\DATAtpusr=D:\PROG
5. Change the Program Manager properties to point to D:\PROG\WWNET.EXE

Maintaining Parallel Messagebases

Although WigWam 2 is registered for use on a single computer, Ashmount recognises that users will wish to be a little more flexible - perhaps connecting via a desktop machine, but reading on a laptop, whilst on the move.

Referring to the two machines as HOME and WORK, and assume that everything is installed to c:\wwmulti2 following the standard defaults. If you have a different installation you will need to amend things appropriately.

First ensure that the two machines are synchronised - i.e. that the c:\wwmulti2 directory of one is the same as the other, using a file linking program of one sort or another to synchronise the directories.

Method One

Now, from WORK you blink. At the end of the blink scratchp.old gets created. Save this file to another name immediately at the end of the blink. (Number them sequentially - this is useful)

Do this everytime you blink from the WORK machine.

Now before leaving the work machine copy the following files/directories to a floppy 1) All of the backed up scratchp.olds 2) *.nam from c:\wwmulti2 (only necessary when you join a new forum/conference) 3) reply.bsc from c:\wwmulti2 4) *.usr from c:\wwmulti2 5) conf.ww from c:\wwmulti2 6) the entire c:\wwmulti2*.ui\ directory structure if it exists (use xcopy /e/s to do this). At the HOME machine. 1) remove the c:\wwmulti2*.ui directory structure 2) copy *.nam to c:\wwmulti2 (only necessary when

WigWam for CompuServe

Contents 116

you have joined a new forum/conference)3) copy reply.bsc to c:\wwmulti2 4) addcon the backed up scratchpads (**File, Import Messages**), one by one, in the order that you downloaded them. 5) copy *.usr to c:\wwmulti2 6) copy conf.ww to c:\wwmulti2 7) recreate the c:\wwmulti2*.ui directory structure from the one copied on to the floppy

This process should retain your read position correctly, although you will not be able to retain the mark for deletion and mark for keep flags between messagebases.

Method Two

There is a simpler, but clumsier method. Just backup (or ZIP) the entire WORK installation, including all sub-directories, but *excluding* TP.INI (which contains system-specific information) and all .EXE and .DLL files (which won't change from session to session). Then restore (or UNZIP) on top of the HOME installation, ensuring that the HOME TP.INI is kept. This method will maintain all flags, but it will occupy more floppy disk space

Appendix C Script Language

In this Appendix, we will cover the two kinds of script that WigWam 2 supports – logon scripts and Remote Service Special Function scripts.

In both cases, it is necessary to have an understanding of (a) the commands expected by the remote system and (b) the commands expected by WigWam 2. For the former, the host system should provide some information on commands. On CompuServe, the PRACTICE Forum Libraries contain useful information. On Cix, "help commands" will produce a brief summary.

When writing scripts, it is advisable to switch logging on (**Capture in Communications Settings**). This will enable you to see what prompts the remote system is sending, and to trace where the script failed.

Logon scripts use a subset of the full script language used for Special Functions, and they are therefore covered first.

The Script Language

Script files reside in the WigWam 2 directory, and customarily have the extension .SCR, although this is not obligatory. Each line of a script file holds either one command, or a comment. The command is identified by a letter in the first column. Command letters may be either in upper or lower case. Comments are indicated by a semicolon in the first column.

The command letter in column 1 is followed optionally by a space in column 2. If there is a space in column 2, it is ignored. The arguments to the command follow. Arguments can be either strings or numbers.

String parameters can contain the following special sequences:

Sequence

Meaning

\r

Carriage Return

\n

Line Feed

\b

Send break

\p

Pause (for approx. 2 secs)

\\

Backslash

^<char>

Control – e.g. ^C sends Control-C

\n

(where n is a number 1-9) sends the parameter passed in to the script from the #call line (see below). \1 is the first parameter, \2 the second and so on.

C.1 Logon Scripts

The commands usually used in logon scripts are listed below:

Command

Meaning

s <string>

Transmit <string> to CIS

w <string>

Wait for CIS to transmit <string>

w <string1>, <string2>

Wait for CIS to transmit either <string1>, or <string2> (commas cannot be used inside a w string)

r <string>

Wait for CIS to transmit <string>, send a CR every 5 seconds until it does

d

Dial the CIS phone number specified to WigWam 2, using the modem dial string and connect string as specified.

p <number>

Pause for <number> tenths of a second

n

Transmit the User ID, as specified to WigWam 2

a

Transmit the CIS Password, as specified to WigWam 2

h

Hang up the phone

b

Quit WigWam Terminal

! <string>

Execute WigWam 2 Special Command (see below)

WigWam 2 Special Commands are built-in commands which perform special functions. All logon scripts should conclude with the special command

```
!#chain reply.bsc
```

This switches control to the script file 'REPLY.BSC', which contains the script commands that control the on-line session. Here is an example logon script (actually cisnode.scr, which logs on to a standard CIS Node):

```
; Log on to CIS Node;; Pause for .5 sec to allow line to settle;p5;; Dial the number  
;d;; Pause for 2 sec to allow line to settle;p20;; Send a CR to wake up CIS  
;s\r;; Keep sending a CR until CIS transmits the prompt;rHost Name;; Send 'cis', wait  
for User ID prompt;scis\rwUser ID;; Send User ID, wait for Password prompt;nwPassword;;
```

WigWam for CompuServe

Contents 119

Send Password, wait for log on banner and chain;awCompuServe Incorporated!#chain
reply.bsc

C.2 Special Function Scripts

Special Function scripts are called by WigWam Terminal to handle special functions such as those described in Chapter 5, *Other CompuServe Features*

The Capture File and Dummy Messages

One special feature of WigWam 2 is that CompuServe output, such as that generated by Online Today, can be turned into a series of ‘dummy messages’, which can then be added into a dummy forum, and read by the user as if they were ordinary messages in a forum. The script language contains a number of special commands which support this feature:

Command

Meaning

f <string>

Start capturing CIS output to the capture file with the name <string> (the standard WigWam 2 capture file name is `cis.cap`).

c <string>

Write <string> to the capture file

m<string1>#<string2>#<string3>

Write a dummy message header to the capture file. The strings are used as follows:

1 – ‘Forum’ name 2 – ‘Section’ name 3 – Subject

i<filename>

delete a file from the local disk

l <string>

l is used after m. Whenever <string> is received from CIS, WigWam 2 will write another dummy header to the capture file, using the Forum and Section names specified in the m command. The subject will be the first non-blank line to follow <string>.

o

Turn capture off

u <string>

Equivalent to ‘s’ – provided for Tapcis script compatibility.

Here is an example script which demonstrates these commands. It is ‘getolt.scr’, a script which fetches the Online Today news. It is adapted from a CompuServe script, written by Thomas G Harold:

```
; OLT.SCR - Script to get Online Today stories; Thomas G. Harold, CIS# 71750,3724 -  
03/27/92;;*****S G OLT-90^MW T-90;OLT-90 is the home of  
Online Today's daily edition ...fcis.capmOnline_Today#S1/Daily Edition#Online Today Daily EditionlOnline  
Today W !; ... read its ALL^MW LastW age!c\r\nMessages !\r\noS ^M; outta hereW T-90S ^M; See news menu and  
make exit certain; get back to a navigation promptW !
```

Note the m command, to insert the first dummy header, and the l command, which will look for the heading ‘Online Today’ which precedes each article. Note also that the script ensures that CIS is waiting at a ! prompt before quitting.

Contents 120

One thing you should be aware of when writing a script is that WigWam 2 automatically handles the More! prompt by sending a CR to CIS. You should therefore not write a script which waits for 'More!', because the script will never see the prompt.

Converting a Tapcis Script (CIS)

Here are the steps you should follow when converting a Tapcis script:

- Check whether the script waits for the More prompt, and change if necessary.

- Modify the Capture commands (WigWam 2 does not support Capture on/Capture off)

- Remove any e command

In most cases, these steps will be sufficient.

Script Parameters

You can send up to five parameters to your script. Within the script, these are represented by \1 to \5. The parameter can be used in place of a string, or embedded in to a string, so, for example,

```
s foo\1bar
```

would send the characters `foo`, followed by the first parameter, followed by `bar`.

Parameters cannot contain spaces.

Running Your Script

You can run your script by selecting the **run any script** option from the **Actions/Script** menu command. Type in the script filename, followed by any required parameters (separate each parameter by a space).

You can also add your command to the Script picklist. If you do this, you can also take advantage of some friendly prompts and defaults to fill in the parameters. To add a command to the Script picklist, you need to add a line to the file SPECIAL.CNF (in the <service> directory). SPECIAL.CNF has the same form and layout as CISINT.CNF, for CompuServe, CIXINT.CNF for Cix, and will be read in to the script list at start-up time. This has the double advantage that there is no need to alter the existing *.CNF files, on which much of WigWam's functionality depends, and your own, carefully-tested scripts will not be over-written when you upgrade.

You define the command by entering a line at the end of the SPECIAL.CNF file with the following format:

```
u'command description'<command name> !#call <filename> <parameters>\n
```

where

'command description'	is the description displayed in the script picklist
<command name>	is a mnemonic for the command
<filename>	is the script filename
<parameters>	is optional, and defines the parameters to be passed to the script.

Note that there is no space between the u and the command name, and there is one space between the command name and the command string. The entire command definition must take up just one line in the SPECIAL.CNF file.

If you place the characters %s in the <parameters> definition, WigWam 2 will prompt the user to enter a parameter, and will insert the user's input into the <parameter> string at that point.

Some other % sequences are recognised by WigWam 2 and replaced when the command is executed. The sequences, and the

WigWam for CompuServe

Contents 121

replacement text, are as follows:

%Commands

%a

Asks a Yes or No question, putting y or n in the script

%b

CompuServe library section name, selected by the user from a picklist of available libraries

%c

The current conference/topic

%d

The number of the last displayed message

%e

Number of last message in current topic

%f

Dos pathname (WigWam 2 will check to see that it exists)

%F

As above, but a longer filename is allowed

%h

The subject line of the root message in the current thread

%i

Current login being used

%I

Current HostName ID being used

%l

Current topic's message file name

%L

Current topics message filename excluding extension.

%m

Causes the editor to be invoked and the resulting text placed in REPLY.BSC

%n

The current conference/forum name, no topic/section

%s

user-typed parameter

%S

As above, but a longer parameter may be typed

%t

Contents 122

Topic/Section name, without conference/forum

%u

A number between 1 and 499

%w

The name of the originator of the last displayed message

Note that the %commands are case sensitive. A detailed description of the %commands follows. With example script takeouts to demonstrate their use.

Command Name : %a

This script command asks a yes or no question, and puts the relevant answer as y or n in the reply file in place of %a.

Command Name : %b

This command is specific to the CompuServe service, it brings up a listbox, which contains the names of the CompuServe libraries that the WigWam 2 knows of. The user selects a library name, and that is placed into the script file in place of %b. This script command is used to enable the user to download files from CompuServe.

Command Name : %c

When WigWam 2 encounters the script command %c, it will place into the reply file the full name of the currently viewed conference/topic (forum/section). This command is most commonly used to 'join' the specific conference and topic to on the host system, to allow further actions to occur in there.

Example: if currently viewing messages in wigwam2/files then the script sequence

join %c\n would place the following into the reply file (remember that \n is an instruction to begin a newline). Most scripts will start with this sequence.

join wigwam/files

Command Name : %d

When WigWam 2 encounters the script command %d, it will place into the reply file the number of the currently displayed message. Thus if message number 235 was currently visible then %d would be replaced by 235.

Example: commenting to message number 235 in wigwam/interface, the following script sequence would give the bones of that command **join %c\ncomment %d\n** This sequence would appear in the script file as :

join wigwam/interface

comment 235

Command Name : %e

The script command %e when placed into the script file is replace by a the number of the highest message in the currently viewed topic, (note, not the highest in the conference as a whole, but this specific topic). This command is most commonly used to set your message pointers on the host system to be in line with that of your local system. So if your script would perform actions on the host system that would alter the message pointers (which would either cause you to download messages again or miss some out) this command is used to reset the pointers to the correct place.

Contents 123

Example: Joining a topic and getting the last 10 messages (assuming in this case that 'skip to back' moves the host systems message pointers) the command is as follows:

join %c\nskip to %e\nskip to back 10\n. Assuming that you were viewing wigwam/interface and the highest message number is 546 in that topic. This would be replaced in the script file as:

```
join wigwam/interface  
skip to 546  
skip to back 10
```

Command Name : %f, %F

This script command places a dos path\filename in the script file in place of itself. %f has a small limit of characters (15), %F allows more, other than this, the two commands are identical (%F should be used in preference to %f). Telepathy requires the filename to be typed in full, WigWam 2 invokes the windows common file dialog to allow a file to be chosen. A valid filename **must** be supplied, and WigWam will verify that the file exists. This command is most commonly used for specifying filename to be uploaded to the host system.

Example: uploading a file called c:\some\where\demo.exe to wigwam/files. This would be represented by the script commands: **join wigwam/files\nupload %F\n**, the script will cause WigWam 2 to prompt for a filename, assuming that the filename above (being c:\some\where\demo.exe) is supplied then the following will be placed into the script file

```
join wigwam/files  
upload c:\some\where\demo.exe
```

Obviously in place of upload you would use whatever command was appropriate for the comms module/host system being used

Command Name %h

This command when encountered in the script file is replaced, in the reply file, by the subject or title line of the root (or original) message of the thread of the currently viewed message (note: not necessarily the title of the message it is a comment to).

Example In wigwam/interface, message 223 was the root (or original) message, and had a subject line of 'New Ideas for Interface', there were comments to that message, being message numbers 226 and 235, and message number 250 is a comment to 235. Then if any of 223, 226, 235 or 250 was being viewed and the script command was issued then %h would be translated to 'New Ideas for Interface'. This is very helpful for maintaining threads, or ensuring that people can see your message, or refer to it more easily by defining a title line.

Command Name %i

This script command is translated into the current login name of the person who issued the script. This is the WigWam 2 users name, NOT the login name as used for connecting to the host system. My name on cix (a host BBS) is thiggins, but my user name on WigWam 2 is taz, %i places taz into the script, not thiggins. Please be very careful between using this command and the next one %I. This command is useful in a number of circumstances, particularly on multi-user systems that share one account on a Host System (i.e. a company CIS account) when it is necessary to differentiate between users. For instance using this parameter could force your local login id to be inserted into every say or comment that you give.

Command Name %I

Contents 124

This script command is translated into the login name of the person who issued the script.

This is not the WigWam 2 users name, but the login name as used for connecting to the host system. My ID on CIS 71662,270, but my user name on WigWam 2 is taz, %i places 71662,270 into the script, not taz. This command is useful in a number of circumstances, such as in a notification being sent to others, for automatically and correctly placing your identity into the reply file. For instance, after uploading a file, you may wish to inform the sysop/moderator that you have uploaded the file, it is convenient to place your name prominently in this so that the sysop, can easily contact you if he needs to.

Example the following script fragment would tell the recipient who uploaded the file **Upload By : %I\n** in my case (ID 71662,270) this would place the following line into the reply file

Upload By : 71662,270

Command Name %I

This command is very similar to the next command %L except that the extension of the topic (if any) is preserved. Generally it is preferred that %L should be using in place of %I (it also helps one to differentiate from %I).

Command Name %L

WigWam 2 maps conferences & topics into a directory/file structure on the local hard disk, so that conference=directory and topics=files. The conference and topic names can be longer than dos would allow, so if appropriate these conference/topic names are truncated or altered to ensure that conflicts do not arise. This script command %I gives the directory\path that is equivalent to the currently viewed conference/topic. The path/file reference is relative to the tpmmsg directory (as defined in the [tpopts] section of tp.ini. This is an extremely useful command as it allows associated data to be mapped into the correct place on the hard disk with a correctish name, allowing a suitable extension to be added to differentiate the type of file. Such as file lists of files that can be downloaded from the topic, or lists of participants who are members of the topic, or a description of the topic, or any other information that can be captured from the hose system and placed into a file.

Example: In the case of reg_wigwam/thebetafiles this is mapped by %I into reg_wigw\thebetaf. Assuming that my local message base is on c:\tp, I want the names of the participants go in a file with an extension of prt, then I would specify this in the script as the following **c:\tp\%I.prt\n** and when that was encountered it would appear in the reply file as:

c:\tp\reg_wigw\thebetaf.prt

Command Name %m

This command name invokes the defined message editor, and places the text put into that into the reply file. This is the command that is used in say or comments or email, or anything else that requires extensive amounts of text to be placed into the reply file.

Example: commenting to message number 235 in wigwam/interface, the following script sequence would give the bones of that sort of command **join %e\ncomment %d\n%m\n**. The script would cause the message editor to appear and let us say I typed in 'more wibble than you can imagine' This sequence would appear in the script file as :

join wigwam/interface

comment 235

more wibble than you can imagine

Command Name %n

Contents 125

WigWam 2 interprets this script command as the conference/forum name of the currently viewed item, it is similar as %c except that this only gives the conference name, not the full conference/topicname. Note this also gives no separator between the two. This script is used when you wish to refer to the conference as a whole rather than any one specific topic of the conference.

Example the general information about the conference is shown by the host command (on Cix) 'show conferencename', and the script command **show %n\n** would allow you to issue that instruction, which, if you were currently viewing wigwam/interface would be translated to

show wigwam

Command Name %s, %S

This script command is a general data entry command, when WigWam 2 encounters this command a dialog box asking for information is put up. %S and %s are the same, except that %S accepts a longer string than %s. This is an extremely useful command in all sorts of circumstances.

In the dialog box that pops up asking for information a script-supplied string can be displayed to indicate to the user the information requested, this script supplied string must immediately follow the %s and be enclosed by ' (single quotation marks) The %s will not accept a null input, unless it is immediately followed by a . (fullstop).

A couple of example script fragments would help clarify things:

Example: **join %S'Conference Name: '\n** this would bring up a dialog box which would have the words **Conference Name:** displayed in it, and an edit line and let us say I typed in wigwam, the following line would be placed into the reply file.

join wigwam

Example **download %S'Download Filename: '\n** this would bring up a dialog box which would have the words **Download Filename:** displayed in it, and an edit line and let us say I typed in fred.txt then the following line would be placed into the reply file.

download wigwam

Note that the space before the %s was placed into the script file.

Command Name %t

This script command corresponds to the topic/section name of the currently viewed item. It does not include any slash or other delimiting character. This command, %t, is similar to the %n and %c commands.

Example: The script command **%n/%t** is exactly the same as **%c**, and can be used in its place in all script fragments.

Command Name %u

This script command is similar to the %s command in that it is a general data input, but is more limited in that it will only accept a number in the range 1 to 499 as valid input, a string input will be rejected.

In the dialog box that pops up asking for information a script-supplied string can be displayed to indicate to the user the information requested, this script supplied string must immediately follow the %s and be enclosed by ' (single quotation marks). The %u will not accept a null input, unless it is immediately followed by a . (fullstop).

Example, setting the read point on the host system back a give number of messages, is done with the command 'skip back nnn', this would be encoded in a script as

Contents 126

join %c\nskip to back %u.'Number of messages back : \n this would bring up a dialog box displaying the message **Number of messages back :** and an edit line. The user could hit return (for a null entry as the fullstop was placed after the %u) or type in a number. Assuming the user typed in 234 while viewing the wigwam/general topic the following lines would be placed in the script file

join wigwam/general
skip to back 234

Command Name %w

This script command places the name of the message being viewed into a script file. This command falls into the category of those messages that are extremely useful for automating things, you could use %s and ask for the persons name, but almost always in those sorts of circumstances you want to use the name of the person you are viewing .

For instance you may wish to send private email a person concerning a particular message (the syntax for which would be mail to personsname) in a particular conference, you could automate the information about the person, conference & topic and the message number

Assuming that the currently viewed message is 234 in wigwam/general, which was posted by thiggins the following script fragment would be appropriate

mail to %w\nRe: Message Number %d in %c\n%m

This would place the following into the script file

mail to thiggins

Re: Message Number 234 in wigwam/general

followed by the text typed into the message editor

Contents **127**

Index

Contents 128

- % prefix, 134
- %Commands, 150
- Actions Menu, 121
- Actions menu, 49
- Addcon, 114
- Address Book, 74, 127
 - adding an address, 75
 - editing an address, 76
 - outside WigWam 2, 76
 - sending mail, 76
- Admin, 20, 25, 27
- Admin Menu, 128
- ASHMOUNT.INI, 131
- Auto Join, 22
- Auto Review, 22
- Binary Mail, 71
- Bookmark Set, 120
- Bookmark Sets, 61
- Bookmarks, 61, 64, 119
 - marking, 62
 - removing, 61
 - unmark, 61
 - viewing, 61
- Buffered UART, 13, 29
- Build, 85, 118
- Capture, 28
- Capture File, 111, 146
- CIS MODE, 125
- CIS Mode, 20, 23
- CIS.BSC, 131
- CIS.CAP, 112, 113, 133
- CIS.OLD, 112, 133
- CIS.UI, 135
- CISINT.CNF, 149
- cisnode.scr, 28
- CISTERM.LOG, 28, 111, 133

Contents **129**

Cix Mode, 20
CIX.BSC, 131
cix.scr, 28
CIXINT.CNF, 149
CIXNEWS, 115
Cixnews, 52, 107
cixnews.scr, 28
CIXTERM.LOG, 28, 111
Clean Display, 23
Clear Mail, 29
Clear Read Mail, 73
collapsed thread, 64
Colours, 33, 120
Colours -defaults, 34
Comment, 65, 125
Communication Settings
 Service, 27
Communications Settings, 18, 27, 128
Compose, 65, 66, 125
Compress, 28
CompuServe
 'command' mode, 38
 different speeds, 38
CompuServe B Plus, 110
CONF.WW, 135
Conference Menu, 123
Conferences
 Joining, 48
 List of, 48
confs.sel, 43
Connect, 121
 Manual, 110
Connect String, 30
Connecting, 110
Connection Type, 28
Copy, 63, 118

Contents 130

Crash Recovery, 86
CTL3D.DLL, 16
Ctrl-Z, 59
CTS not active, 110
Delete, 62, 64, 83, 119
Delete Conference, 84, 124
Delete Forum, 83, 124
Deleting
 Forums from WigWam, 83
Deleting Conferences, 84
Dial String, 30, 31
dialplus.scr, 28
Download File, 126
Download from MSKB, 95
Download from MSL, 95
Download FTP, 29
Download, Full, 50
Downloading a Known File, 78, 80
Downloading messages, 50
Ebert's Movie Reviews, 95
Edit Any File, 89, 118
 No Conversion, 89
Edit Menu, 118
Edit Notes, 90, 118
Encryption, 25
European Weather Maps, 95
Exit, 118
Fax, 73
 132 Columns, 73
 DPI, 73
 No Cover, 73
Fetch Full Message, 64, 125
File Lists, 79
 Find, 80
File Locking, 25
File Menu, 117

Contents 131

Files, 77
 Downloading, 80
 Downloading from Libraries, 78
 Downloading from Mail, 72
 List of, 79
 Sending by Mail, 71
Filing messages, 64
Find, 63, 118
Find Again, 119
Flow control, 30, 110
Font, 120
Fonts, 34
Forum
 Newsflashes, 40
Forum Menu, 123
Forums
 deleting, 83
 Problems joining, 41
FTP
 Open Site, 106
Full Download, 40, 45
Full Menus, 23
Get Billing History, 95
Get Billing Information, 95
Get Conference Information, 124
Get Forum Information, 124
Get PCWeek Stories, 95
Go, 123
Goto, 126
goto, 59
Hangup String, 30
header fields - Message Editor, 66
Header messages, 45
Header Separation, 23
High Message Number (HMN), 93
Housekeeping, 81

Contents 132

- Hurricane Warnings, 95
- Ignore, 119
- Ignore colours, 33
- Ignoring Threads, 63
- Import Messages, 114, 117
- Init String, 30
- Init String - Special Characters, 31
- Installation disk, 14
- Installing, 13, 14, 15, 16, 17, 18, 127
- Involvement colours, 33
- Involvement Threads, 91
- Join
 - Register, 134
- Join Service Conference, 49, 124
- Join Service Forum, 124
- Joining Forums, 39
- Keep, 62, 64, 83, 119
- Key Macro, 91
 - Buttons, 91
- Key Macro Menu, 127
- Keyboard Shortcuts, 128
- Libraries, 77
- Library Lists
 - Keywords, 78
 - Max Age, 77
 - overlap, 78
- Library lists
 - Downloading, 77
 - Viewing, 78
- List Bookmarks, 122
- Load, 127
- location, 14
- Logon Scripts, 28
- Mail, 70
 - Address book, 74
 - Binary, 72

Contents **133**

- Binary mail, 71
 - from address book, 76
- Internet, 71
- Replying, 70
- Writing, 71
- Mail Menu, 127
- Mail/Refresh Dir, 72
- Management, 127
- Manual Connect, 44, 50
- Mark All Read, 60, 122
- Mark Bookmarks, 122
- Mark Message, 126
- Mark Message Read, 60, 126
- Mark Message Unread, 60
- Mark Section Read, 60, 126
- Mark Topic Read, 60, 126
- Mercury, 31
- mercury.scr, 28
- Message colours, 34
- Message Converter, 112
- Message Editor, 66
 - address book, 76
 - Review, 69
- Message Font, 35
- Message Header, 23
- Message Icons, 64
- Message Import, 114
 - Bix, 115
 - Filename, 115
 - Full Thread, 115
 - GreenNet, 115
 - Insert Messages, 115
 - Logging, 115
 - Mail Name, 115
 - Service, 114
 - Single Group, 116

Contents 134

- Strip Header, 115
- Usenet, 115
- Message pointers, 50
- Message Viewer Panels, 56
 - sizing, 56
- Modem, 18
- Modem configuration, 30
- Modem Control, 30
- Moderate, 92, 103
- Moderating Conferences, 102
- Modify File List, 102, 128
- Modify Forum/Conference, 32, 92, 128
- Multi-Phone, 18, 28
- Network, 26
- Newsnet, 107
- Next Bookmark, 125
- Next Conference, 123
- Next Forum, 123
- Next Unread, 125
- NextForum, 58
- Notes, 89
- Online Today - One Article, 95
- Online Today Daily Edn, 95
- Original, 59, 125
- Parity, 29
- Password, 24, 111
- Play, 127
- Port, 18, 29
- Post Private, 68
- Postponed Sections, 58
- PRACTICE, 40
- Previous Conference, 123
- Previous Forum, 58, 123
- Print, 117
- Print (Left Margin), 23
- Printer fonts, 34

Contents 135

Printing messages, 64
Private messages, 68
Program Icons, 17
Proportional Font, 120
Proportional font toggle, 35
Prune, 81, 118
 days, 82
 delete only, 82
 Filename, 82
 never, 82
 remove dormant message, 82
Prune Options, 32, 81, 128
Pruning By Age, 81
Quiet Mode, 22
Rate, 29
Read Only, 65, 92
Read order, 21, 58
Reading messages, 55, 56
Receiving Mail Messages, 70
Recent, 23
Reconstruct, 86, 87, 123
 plugging holes, 87
Recovering from failed downloads, 86
Refresh Conference List, 49, 124
Refresh File List, 126
Refresh Forum List, 124
Refresh Library List, 77, 126
Refresh Mail Dir, 29
Remote Resign, 124
Remove All Bookmarks, 122
Remove All Ignore Marks, 122
Reply, 65, 125
Reply by Mail, 66
REPLY.BSC, 131
REPLY.BSC backups, 132
Requirements, 13

Contents 136

Resign Conference, 123
Resign Forum, 123
Resigning Forums, 44
Review, 69, 90, 121
Running High Speeds, 31
Save, 128
Saving messages to file, 64
Say, 65, 125
Scheduled Full Connect, 50
Scheduled Full Download, 45
SCRATCHP, 133
Script, 72, 122, 149
Script Commands
 Add msgs to scratchpad, 98
 Copy Message, 99
 Download fdir, 101
 Download some Messages, 98
 Enter Absence, 99
 Find File, 99
 FTP Change Directory, 106
 FTP Close Site, 106
 FTP Get File, 106
 FTP Get multiple files, 106
 FTP Read directory, 106
 Get contents of ARC/ZIP, 98
 Get profile for editing, 99
 Join & Recent, 100
MAIL
 Send Binmail, 101
 Upload file, 101
MAIL Clear Read, 102
MAIL Delete Message, 102
MAIL Download file, 102
MAIL Download file dir, 102
MAIL Erase file, 102
MAIL Export file, 102

Contents 137

- MAIL Mark Mail Unread, 102
- MAIL Rename file, 102
- Manual Operation, 100
- Quick Search, 99
- Rejoin local expired topic, 100
- Rejoin resigned topic, 99
- Replace Profile, 99
- Reset to 12pm, 98
- Say in local expired topic, 100
- Show All/Conf/New, 98
- Upload and run Script, 99
- Scripts
 - "Full Search, Full msgs", 99
 - "Full Search, this Topic", 99
 - "Reconstruct", 98
 - "Send CIX Command", 100
 - Built-In Scripts, 96
 - FTP, 106
 - Language, 143
 - Logon scripts, 143
 - MOD, 104
 - Parameters, 149
 - Problems, 132
 - Special function scripts, 146
 - Tapcis scripts, 149
 - Using, 94
- scrolling messages, 65
- Search, 63, 119
 - Bookmarks only, 63
- Section Menu, 125
- Sections to Collect, 42, 121
 - Full, 43
 - Header only, 43
 - Read Waiting Messages, 43
- Selective Download, 45, 50
- Self Registration, 25

Contents 138

Send As Shown, 68
Send Fax, 73, 127
Send File, 127
Send Mail, 66, 127
Service Conferences, Joining, 48
Service ID/Password, 26
Service Setup, 25, 128
Set CIS Options, 39, 122, 132
Set Cix option, 100
Set Reading Order, 128
Set Startup Macro, 128
Setup, 15
Show, 124
 All forums, 85
 conference information, 85
 Joined forums/conferences, 84
 Moderators, 84
 New messages, 84
 unjoined forums/conferences, 84
Show All, 124
Show Comments, 69, 90, 125
Show Conference Information, 124
Show Forum Information, 124
Show Joined Conferences, 124
Show Joined Forums, 124
Show Replies, 69, 90, 125
Show Says, 125
Show Status Bar, 120
Show Status Box, 120
Show Toolbar, 120
Show Toolbox, 120
Show Unjoined Conferences, 124
Show Unjoined Forums, 124
Show, New Messages, 124
Signatures, 68, 122
Single Script, 25

Contents **139**

Skip, 60, 126
Skip Back, 61
Skip Current Thread, 60
Skip to First, 60
Skip to Last, 61
Skip to Message Number, 61
Sound, 23
SPECIAL.CNF, 149
Start/Stop Record, 127
Status Bar, 37
Status Box, 36
Tapcis
 adding messages to WW, 116
 converting, 113
Terminal, 110
Threads, 56
Toolbar, 36
 Buttons Only, 36
Toolbox, 36
Tools Menu, 127
Topic, 66
Topic Menu, 125
TP.INI, 131
UK Weather Maps, 95
Undo, 59, 118
Unwanted services, 20
Upgrading, 16, 48
Upgrading from WigWam 2, 16
Upload File, 80, 126
Uploading a File
 CIS, 79
 CIX, 80
Usage Log, 112
Usenet, 52, 107, 115
User management, 32
User Options, 22, 128

Contents 140

USER.USR, 135
View Any File, 89, 118
View Chronologically, 57, 121
View File List, 126
View Library List, 126
View Menu, 120
View Roots Only, 57, 120
View Service Conferences, 124
View Service Forums, 124
View Threads, 57, 120
Virus Scanner, 26
Wait, 30
Weather Maps, 95
What's New on CIS, 95
WigWam Terminal, 110
Withdraw Message, 125
Withdrawing Messages, 69
Word Size, 29
Writing messages and replies, 65
Ziffnet forums, 40