

Tutorial 2

Copyright (c), Freeman-Teresa Software, 1995

What topics are covered?

- Installing ctl3dv2.dll.
- Creating an INI file and setting an INI entry.
- Associating the extension .cpp to notepad.
- Supporting selective install.

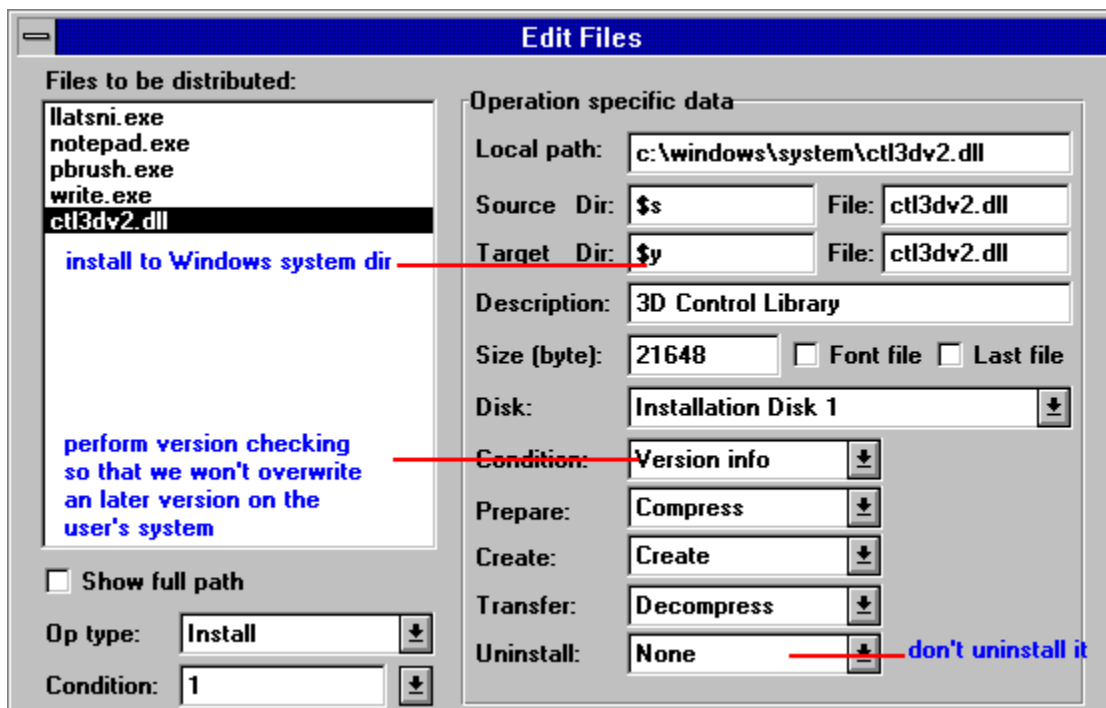
Step 1

Open c:\prj\install.inf. You will base this tutorial on the last one.

Step 2

Suppose that write.exe needs 3D controls to run. So you need to distribute ctl3dv2.dll as well.

Go to the file dialog (Edit | Files). Click on "Pick Files" button to go to File Manager. Change to c:\windows\system, select ctl3dv2.dll and drop it into the file list. Finally enter the parameters as shown below:



Click on "OK" button.

The followings are special points about public .DLLs (i.e., those shared by applications from different vendors):

- Installed into Windows system dir, i.e., \$y.
- Protected by version checking.
- Survives any future uninstall.

However, if it is just a private .DLL (i.e., it will be used by your own application only), you should install it into \$i and remove it when your application is uninstalled.

Step 3

Now you are going to set up some INI entries to be created during the install.

Choose Edit | INI entries. Click on "Insert" to create a new entry. Enter the parameters as shown below:

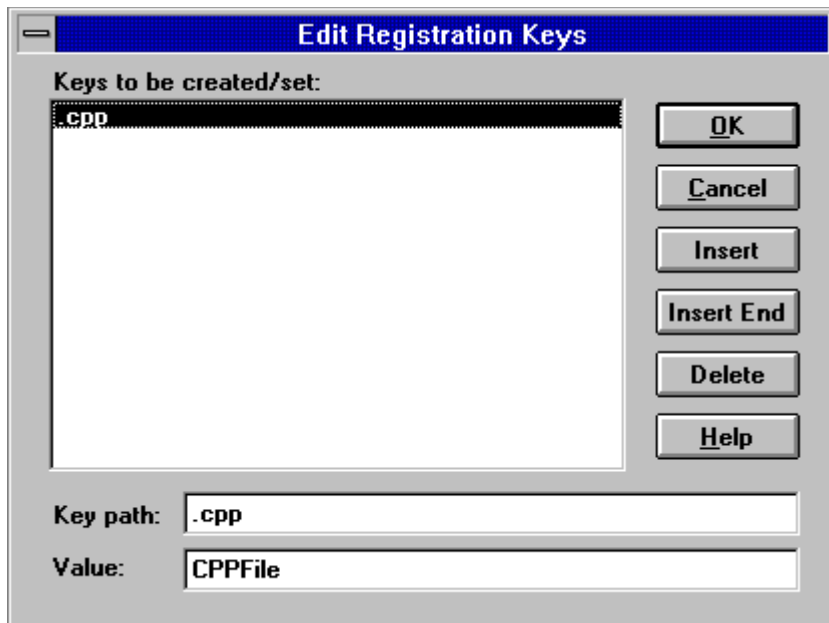


Click on "OK" button.

Step 4

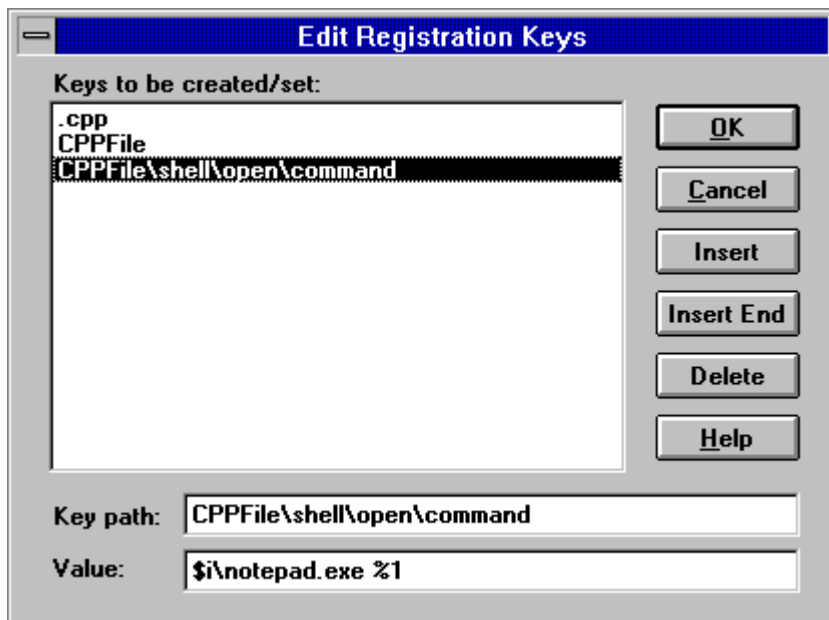
Now you are going to associate .cpp to notepad so that after installation the user can double click on a .cpp file to load the file into notepad.

Choose Edit | Registration Keys. Click on "Insert" and then enter the parameters as shown below:



Create two more keys:

- | | key path | value |
|---|----------------------------|--------------------|
| • | CPPFile | C++ Source File |
| • | CPPFile\shell\open\command | \$i\notepad.exe %1 |



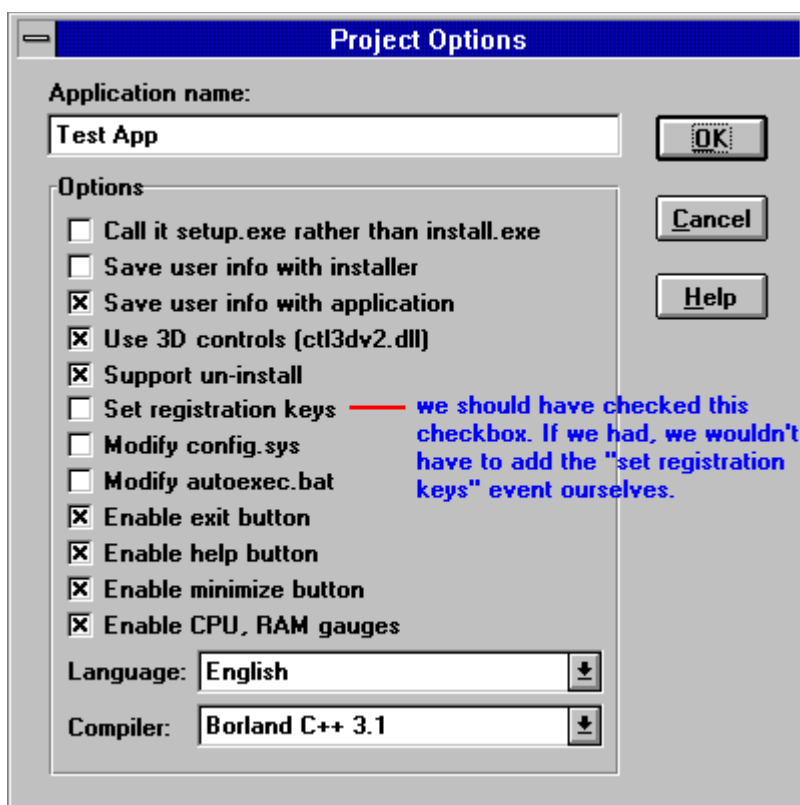
Click on "OK" button.

Step 5

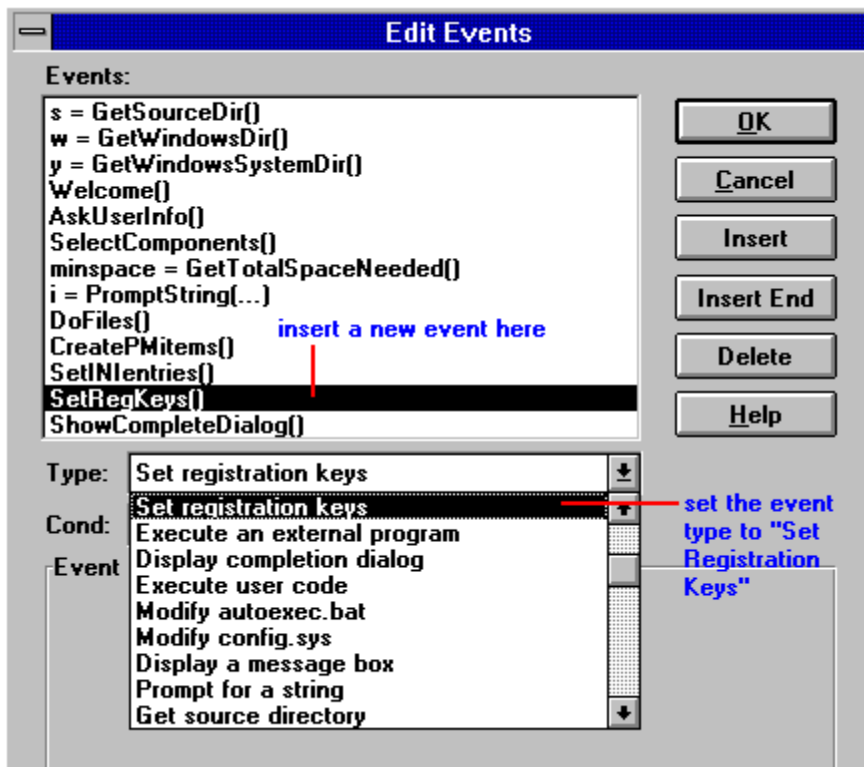
It is high time you saved your work. Choose File | Save.



Oops! You still have to add a "set registration keys" event for the whole thing to work. This is necessary only when you did NOT select the "set registration keys" when you created a new install project:



Click on "Cancel" button to abort the save and then go to the event list (Edit | Events) to add a "set registration keys" event as shown below:



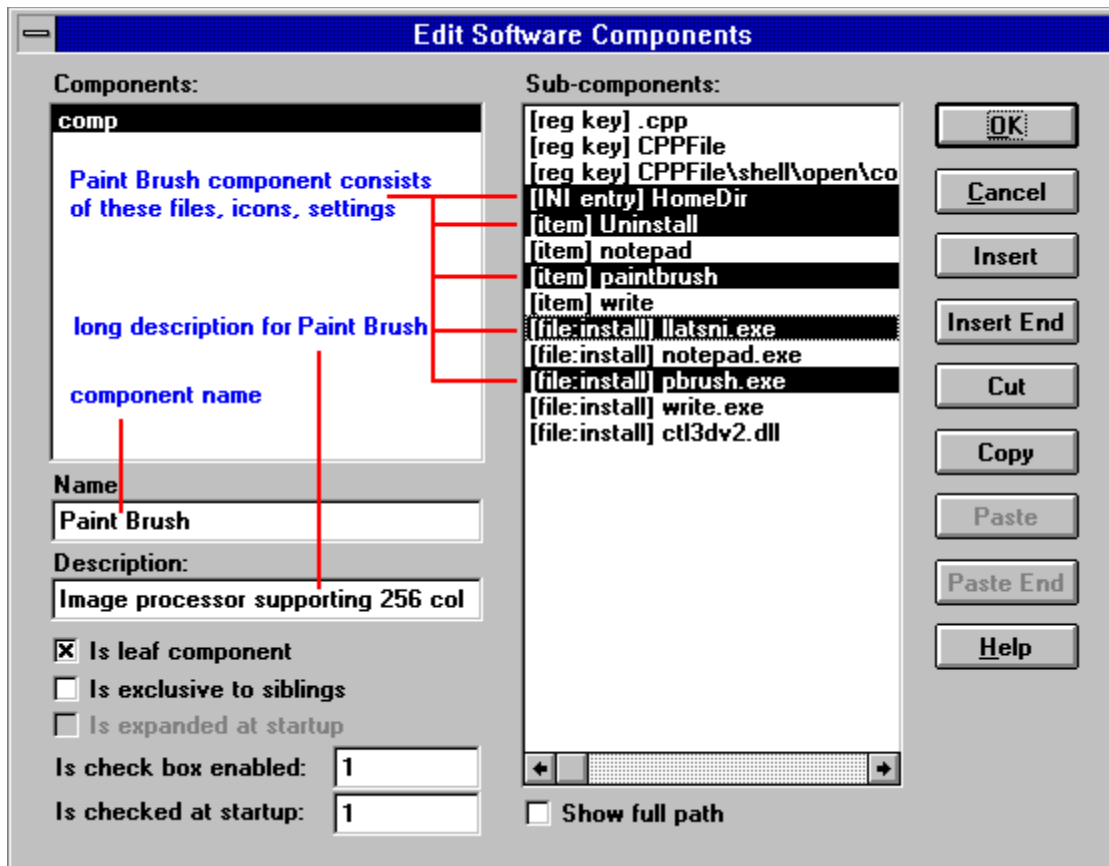
By the way, we can see there are plenty of goodies here such as the capacity to display message boxes, execute external programs, read INI entries, prompt for a string, search for a file and so on.

Click on "OK" button. Now choose File | Save again and the warning will go away.

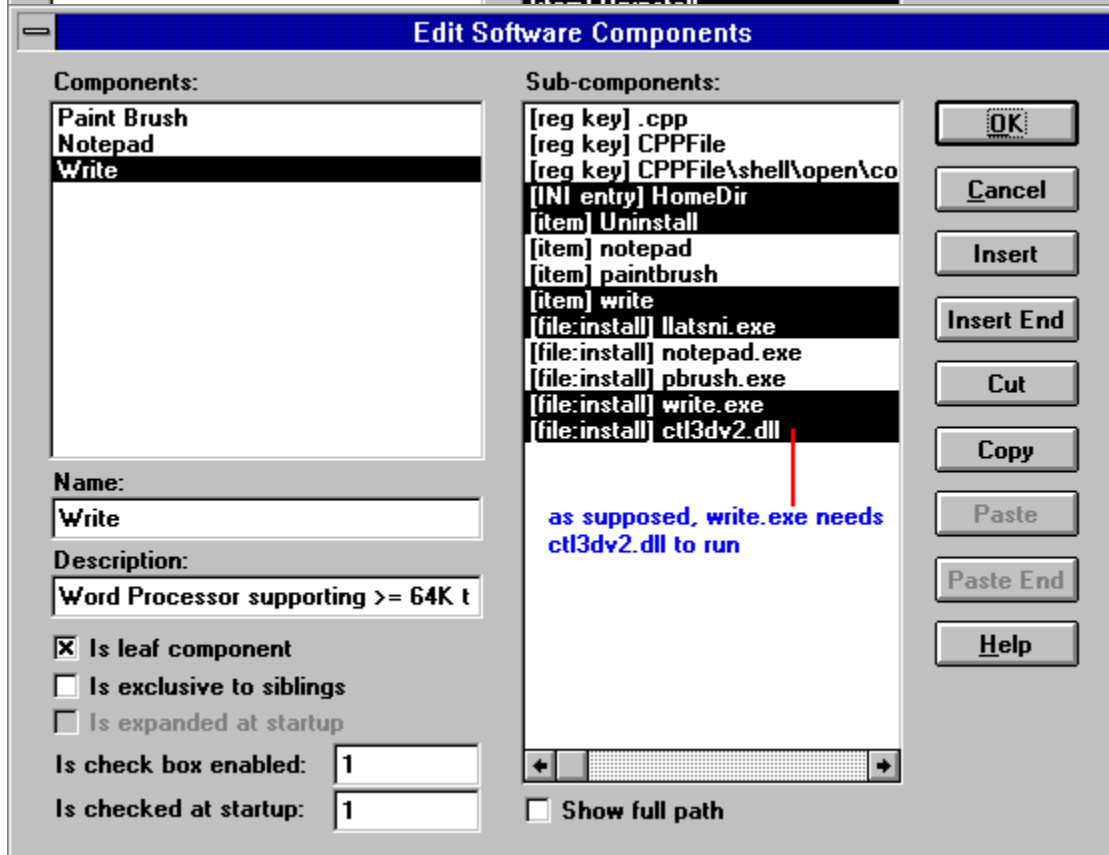
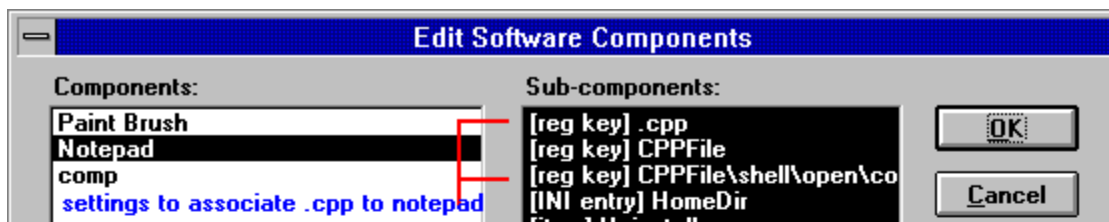
Step 6

Now you are going to divide your package into selectable "components" so that the user can choose which parts to install.

Choose Edit | Software Components. Click on "Insert" to create a new component for paint brush. Enter the parameters as shown below:



Click on "Insert End" to create two more entries for notepad and write:

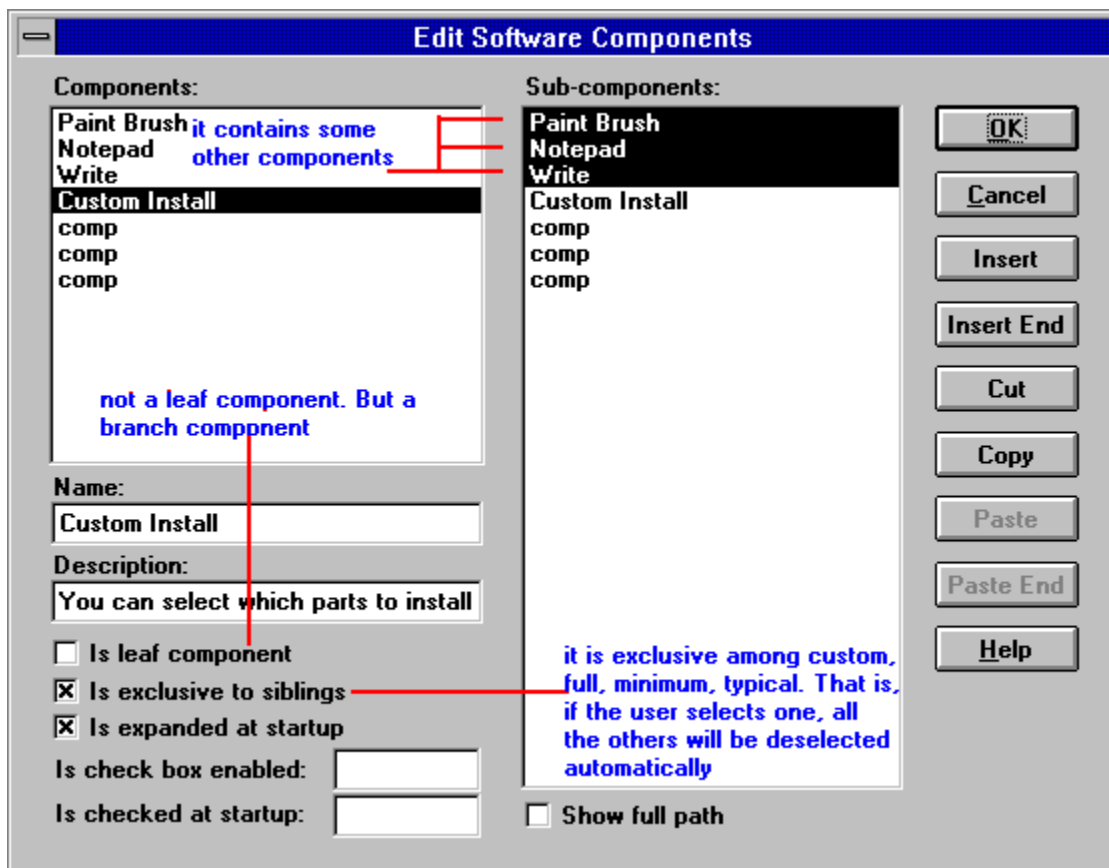


To help the user select the components, you create four more components:

- full install --- It includes everything in the package.
- typical install --- It includes everything except notepad since write can do its job.
- minimum install --- It includes notepad only.
- custom install --- notepad, paint brush and write are all there for user selection.

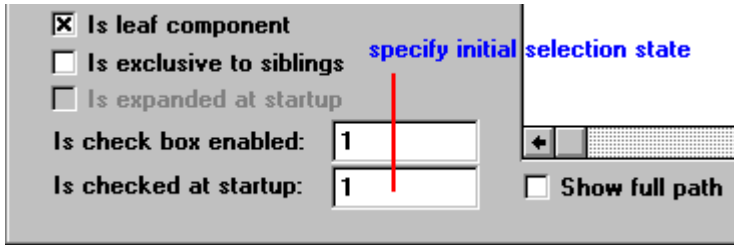
Custom install is quite special in that it doesn't contain files, icons, or other settings, but some other components. Components containing other components are called branch components (like "custom install") while those containing files and icons are called leaf components (like "write" or "full install").

OK. Click on "Insert End" four times and fill out the parameters one by one:



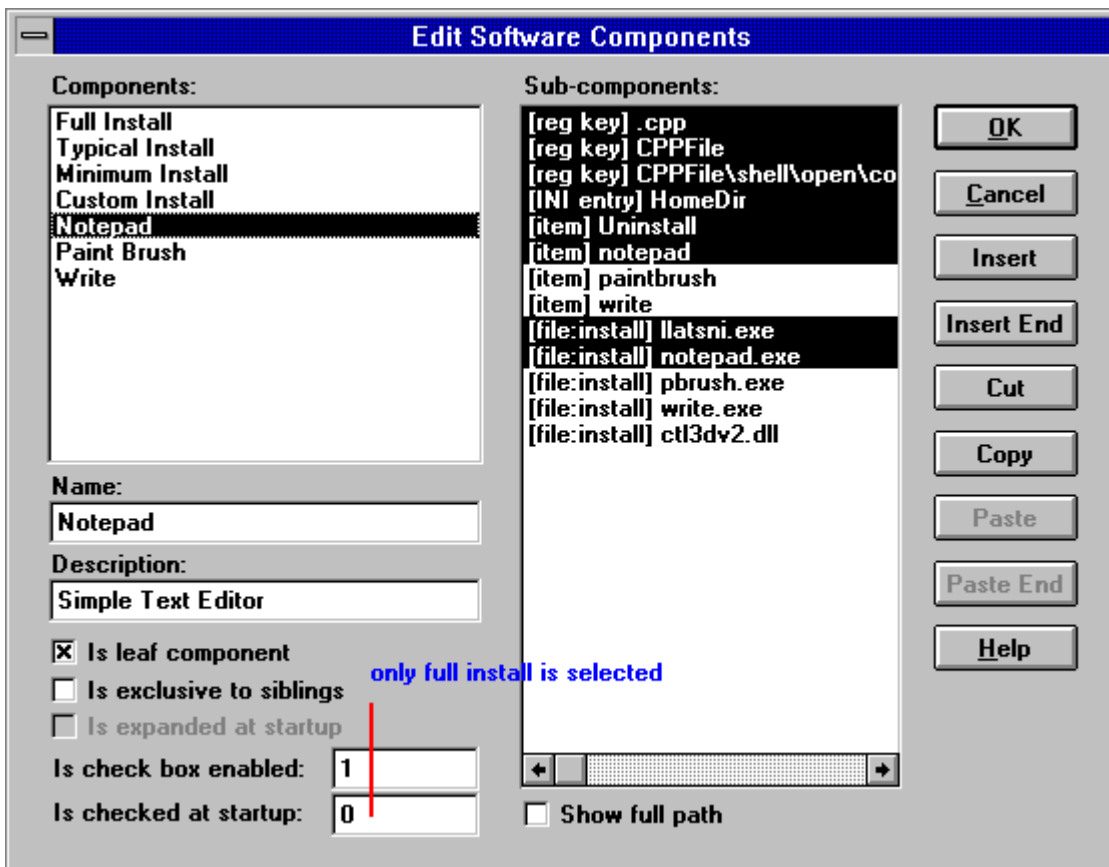
Since full, typical, minimum and custom install are exclusive to one another, it is meaningless to select all of them at startup. Instead, at startup you should select full install only and deselect all others.

For a leaf components like full install or typical install, the initial selection state can be specified directly:

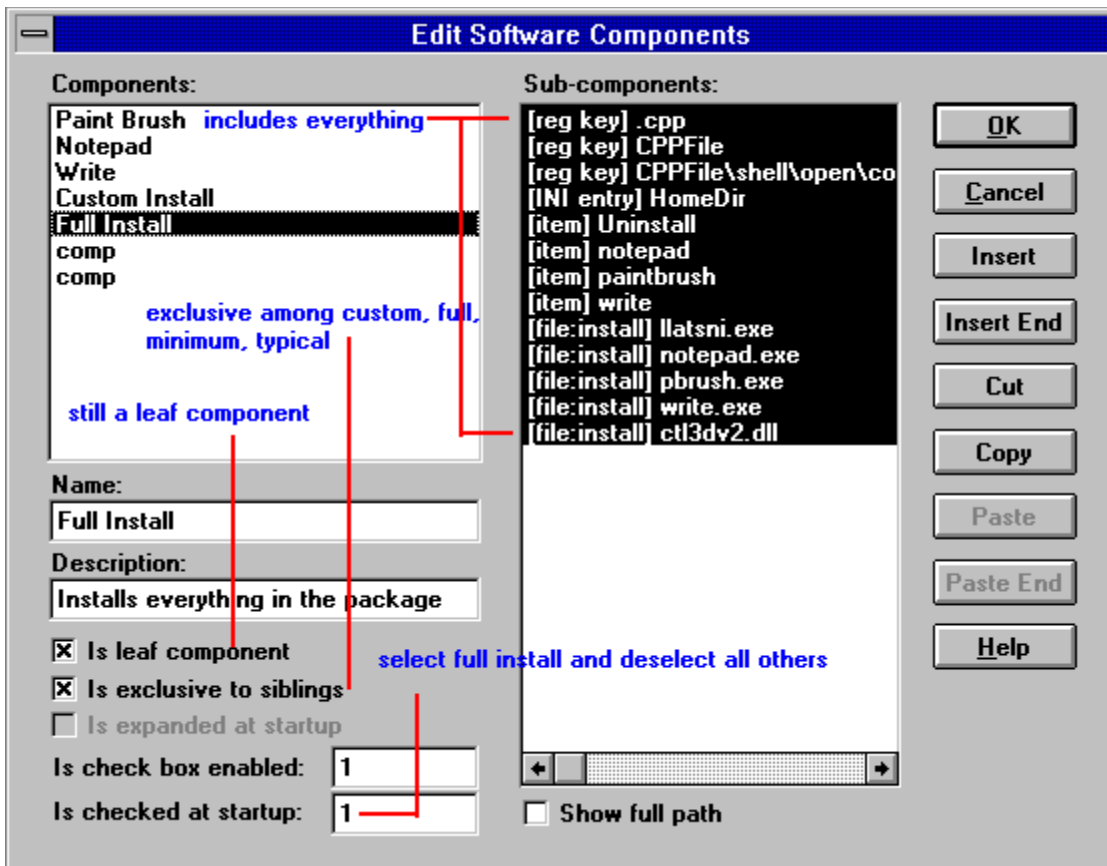


However, for a branch component like custom install whose selection state is calculated from those of its sub-components, the only way to specify its initial selection state is to specify its sub-components' initial selection states.

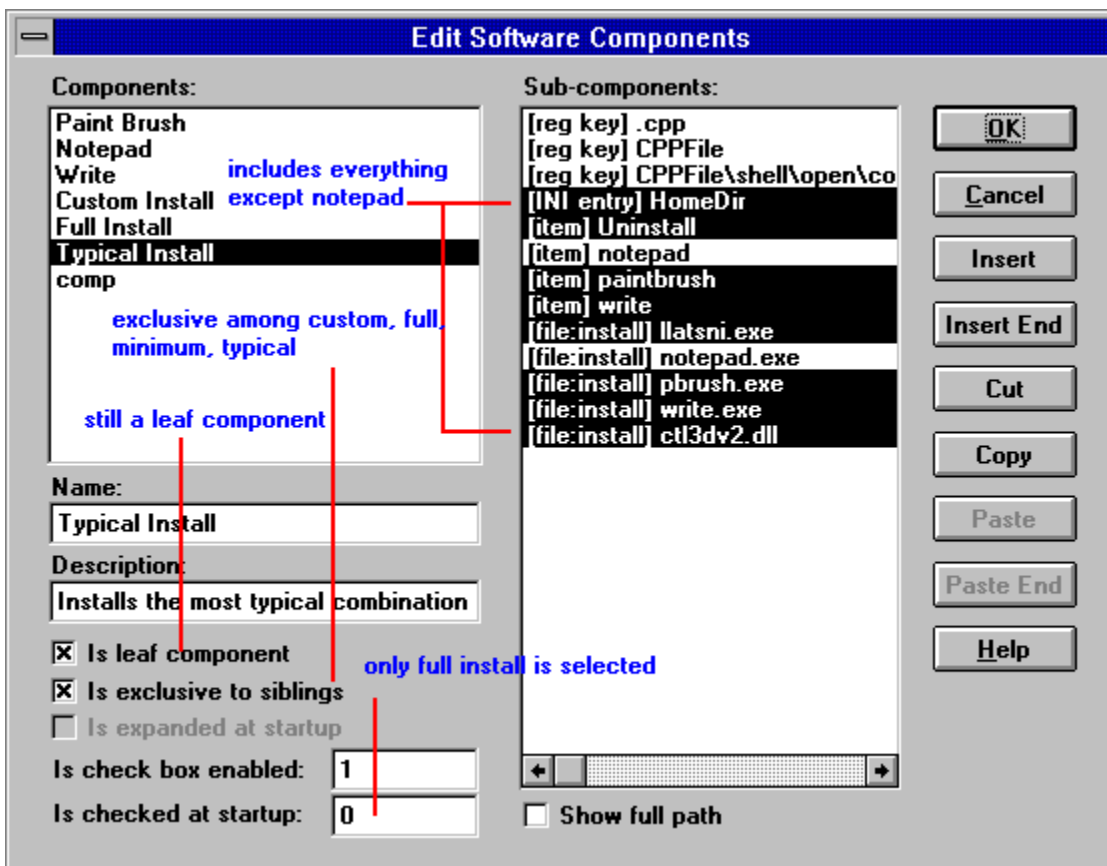
In your case, in order to deselect custom install at startup, you have to deselect all its sub-components (notepad, paint brush, write) like:



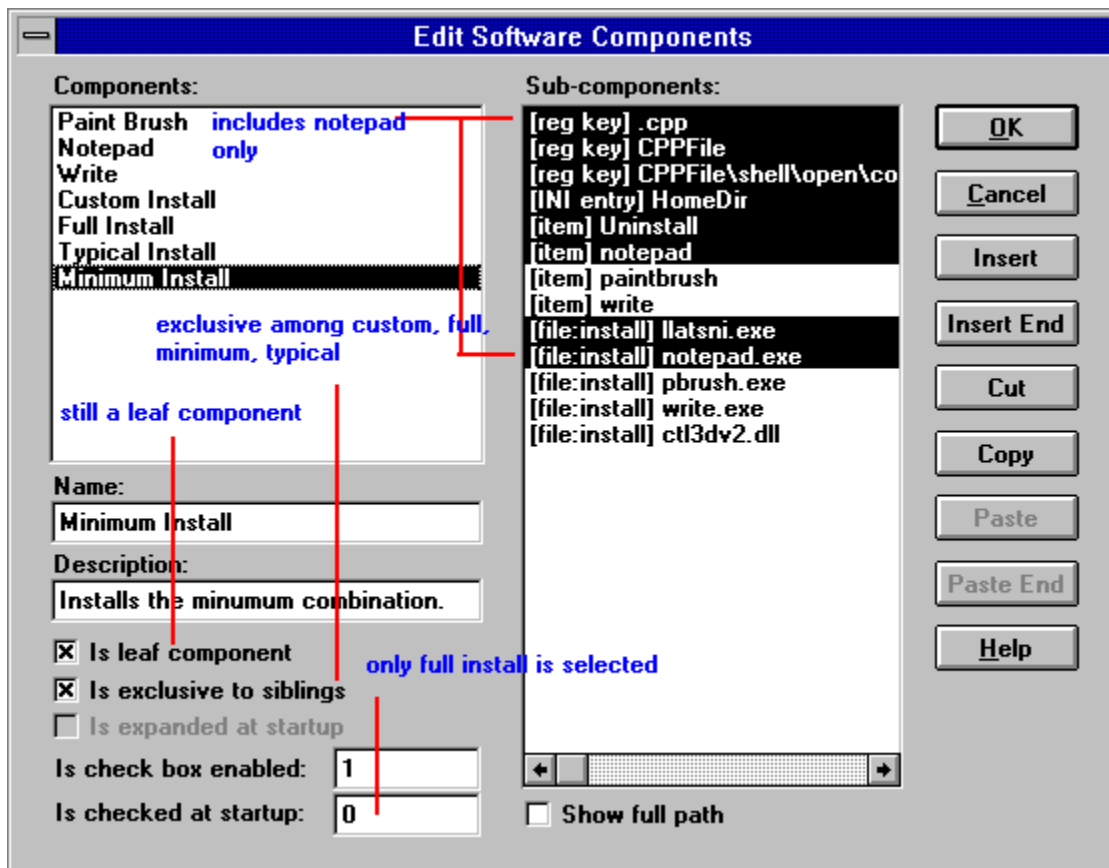
For full install:



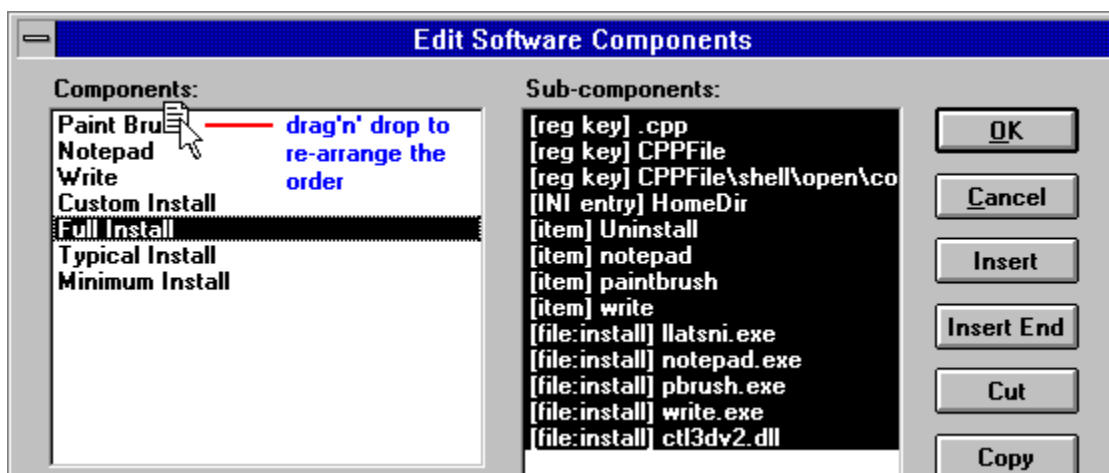
For typical install:



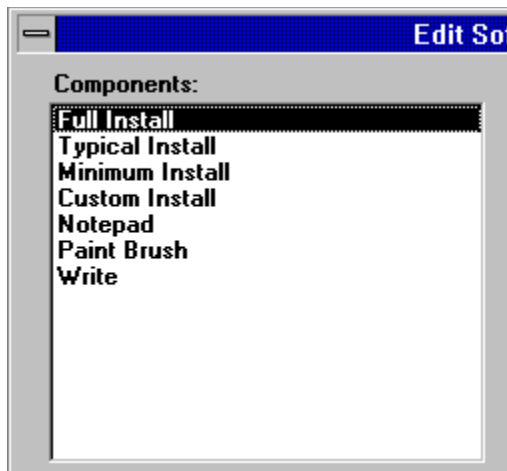
For minimum install:



To follow the top-down design, you would be better off re-arranging the components so that they follow this order: full install, typical install, minimum install, typical install, notepad, paint brush, write. You can do this by drag'n'drop. Just select the component, drag it to the desired position, and finally release the mouse:



The final order should look like:



Click on "OK" button.

By the way, drag'n'drop works on the file list (Edit | Files) as well.

Step 7

Now, test run, build disk set, purify and zip the install.

Congratulations! You have finished tutorial 2.