

# **IBM WorkFrame/2 Introduction**

## **Version 2.1**

Document Number S82G-3740-00

September 16, 1993



IBM WorkFrame/2

S82G-3740-00

## **Introduction**

Version 2.1



IBM WorkFrame/2

S82G-3740-00

## **Introduction**

Version 2.1

IBM

**Note!**

Before using this information and the product it supports, be sure to read the general information under "Notices" on page vii.

**Third Edition (November 1993)**

This edition applies to Version 2.1 of the IBM WorkFrame/2 product and to all subsequent releases until otherwise indicated in new editions. Make sure you are using the correct edition for the level of the product. Order publications through your IBM representative or the IBM branch office serving your locality. Publications are not stocked at the address given below.

A form for readers' comments is provided at the back of this publication. If the form has been removed, address your comments to:

IBM Canada Ltd. Laboratory  
Information Development  
21/986/844/TOR  
844 Don Mills Road  
North York, Ontario, Canada. M3C 1V7

You can also send your comments by facsimile (attention: RCF Coordinator), or you can send your comments electronically to IBM. Please see "Communicating Your Comments to IBM" for a description of the methods.

When you send information to IBM, you grant IBM a nonexclusive right to use or distribute the information in any way it believes appropriate without incurring any obligation to you.

© **Copyright International Business Machines Corporation 1992, 1993. All rights reserved.**

Note to U.S. Government Users — Documentation related to restricted rights — Use, duplication or disclosure is subject to restrictions set forth in GSA ADP Schedule Contract with IBM Corp.

IBM is a registered trademark of International Business Machines Corporation, Armonk, N.Y.

---

## Contents

<b>Notices</b> . . . . .	vii
Trademarks and Service Marks . . . . .	vii
<b>Introduction</b> . . . . .	1
Overview . . . . .	1
WorkFrame/2 Folder . . . . .	3
Information Folder . . . . .	4
Templates Folder . . . . .	5
Projects . . . . .	5
Composite Projects . . . . .	6
Actions Profiles . . . . .	7
Actions and Projects . . . . .	9
Performing Actions . . . . .	11
Learning to Use the WorkFrame/2 Product . . . . .	13
<b>Installing the WorkFrame/2 Product</b> . . . . .	15
Installation on a LAN Server . . . . .	15
Installation on a Workstation . . . . .	16
Other Setup Functions . . . . .	17
<b>What's New for Version 2.1</b> . . . . .	19





---

## Figures

1. The WorkFrame/2 Folder . . . . .	3
2. A Composite Project (CLC) and Two Projects (DLL and LIB) . . . . .	6
3. Changing an Action in an Actions Profile . . . . .	7
4. Actions Page in a Project's Settings Note Book . . . . .	9
5. Options Interface for the OS/2 Linker . . . . .	10
6. Performing an Action . . . . .	11
7. WorkFrame/2 Monitor Window . . . . .	12



---

## Notices

References in this publication to IBM products, programs, or services do not imply that IBM intends to make these available in all countries in which IBM operates. Any reference to an IBM licensed program in this publication is not intended to state or imply that only IBM's licensed program may be used. Any functionally equivalent product, program or service that does not infringe any of IBM's intellectual property rights may be used instead of the IBM product, program, or service. Evaluation and verification of operation in conjunction with other products, except those expressly designated by IBM, is the user's responsibility.

IBM may have patents or pending patent applications covering subject matter in this document. The furnishing of this document does not give you any license to these patents. You can send license inquiries, in writing, to the IBM Director of Commercial Relations, IBM Corporation, Purchase, NY 10577.

This publication contains examples of data and reports used in daily business operations. To illustrate them as completely as possible, the examples include the names of individuals, companies, brands, and products. All of these names are fictitious and any similarity to the names and addresses used by an actual business enterprise is entirely coincidental.

---

## Trademarks and Service Marks

The following terms used in this publication are trademarks or service marks of IBM Corporation in the United States or other countries. They are denoted by an asterisk (\*) when they first appear in the text.

IBM  
OS/2  
Presentation Manager  
WorkFrame/2  
Workplace Shell.



---

## Introduction

The IBM\* WorkFrame/2\* product offers a unique application development environment that you can easily tailor to your own personal needs. It takes full advantage of the OS/2\* Workplace Shell\* interface to create a customizable and user-friendly graphical interface that simplifies the process of organizing and building software projects.

This booklet introduces you to the WorkFrame/2 product and tells you how to install it. Installation information begins on page 15. If you are familiar with previous versions of the WorkFrame/2 product, you may wish to read "What's New for Version 2.1" on page 19 before reading the rest of this introduction.

### Note!

You must be running OS/2 Version 2.1 or higher to install and run version 2.1 of the WorkFrame/2 product.

If you are using OS/2 Version 2.0, install WorkFrame/2 Version 1.1 rather than WorkFrame/2 Version 2.1.

---

## Overview

The Workplace Shell enhances your general productivity through its object-action association techniques. With the WorkFrame/2 product, you enhance your programming productivity by using similar object-action techniques specifically customized for software development.

One of the major tasks any programmer faces is the problem of organizing all the code for a software project. Using containers designed specifically for code, the WorkFrame/2 product lets you organize your files in a clear and meaningful manner. See "Projects" on page 5 and "Composite Projects" on page 6 for more information.

Once you have organized code, you will not only need to edit, compile, and debug it, but you will likely want to use special tools such as icon editors and performance profilers too. Ideally, you will want these actions easily accessible and easily done. Using the WorkFrame/2's object-action approach, the actions you need are available right on the object's pop-up menu. For example, if the icon represents a C++ file, you compile it just by selecting the compiler you want from its pop-up menu. See "Performing Actions" on page 11 for a full explanation. In summary, with the WorkFrame/2 product, you can:

- Group source code into containers to give you a visual perspective of how your software projects are organized.

- Organize the actions used to build software applications in a way that is more geared toward the development process than the Workplace Shell association techniques are.

- Set options for actions quickly and easily using graphical user interfaces.

- Integrate the tools you like to use. If you have a favorite editor, your own bitmap viewer, or other tools, you can integrate them along with WorkFrame/2-enabled tools provided by vendors.

- Capture output from actions in a Presentation Manager\* (PM) window (see Figure 7 on page 12).

- Create make files and manage object code libraries.

And because the WorkFrame/2 product uses many of the OS/2 Desktop features, you will find it to be a natural extension of the Workplace Shell that is ideal for developing software.

## WorkFrame/2 Folder

Once the WorkFrame/2 has been installed, you will see the WorkFrame/2 icon on the OS/2 Desktop. Clicking on the WorkFrame/2 icon causes the WorkFrame/2 folder to open as shown in Figure 1.

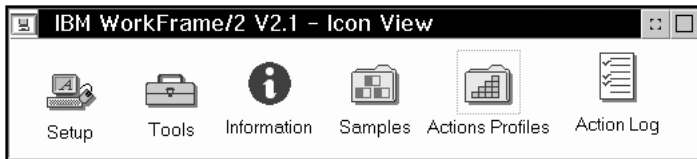


Figure 1. The WorkFrame/2 Folder

The icons in this folder represent various components of the WorkFrame/2 product:

**Setup** Is the **Setup** program. Use it when you want to reinstall the WorkFrame/2 program, add users to a LAN-based WorkFrame/2 installation, or migrate files from previous versions to this version.

**Tools** Contains development tools such as utilities for creating make files and managing libraries of object modules.

**Information** Contains the online books and tutorials that will help you use the product.

**Samples** Contains the sample code supplied with the WorkFrame/2 product.

**Actions Profiles** Contains the profiles defining actions (such as compiling and linking) used in the software development process.

**Action Log** Lets you view and save a record of your activities.

## **Information Folder**

Online information is available in context-sensitive help and online books. With context-sensitive help, you press the **F1** key or select the **Help** push button to get context-sensitive help for the selected user interface control. To access an online book, open the **Information** folder in the WorkFrame/2 folder and select what you want to view.

The **Information** folder contains tutorials and online books:

### **IBM WorkFrame/2 Tutorial**

Teaches you the WorkFrame/2 basic concepts with a step-by-step example of building a software application.

### **IBM Library Manager Tutorial**

Teaches you how to manage libraries of object modules using the **IBM Library Manager** utility.

### **LIB Utility Reference**

Describes the command line interface of the IBM Library Manager.



## Templates Folder

Some of the most important components are not in the **WorkFrame/2** folder but in the OS/2 **Templates** folder.

When you open up this folder, you see three new templates:

- WorkFrame/2 Project
- WorkFrame/2 Composite Project
- Actions Profile
- Action Log.

From these, you can create projects, composite projects, and profiles in the same way you create other OS/2 objects.

## Projects

The development of software applications can usually be divided into different components. For example, the components of a software application could consist of an executable file, a dynamic link library, and an online book. There might also be components that are not part of the final product but a component of the development process, such as a class library.

With the WorkFrame/2 product, these different components are referred to as *projects*. A project visually appears as a container holding the source code for one of these components (see Figure 2).

Projects also contain information used to build the component such as tool options and a make file.

## Composite Projects

Composite projects are containers holding projects or other composite projects. Use composite projects to organize the projects associated with the software application.

In the example mentioned previously, there were projects for the following components:

- Executable file
- Dynamic link library
- Class library
- Online book.

When open, the composite project for the example would appear as in Figure 2.

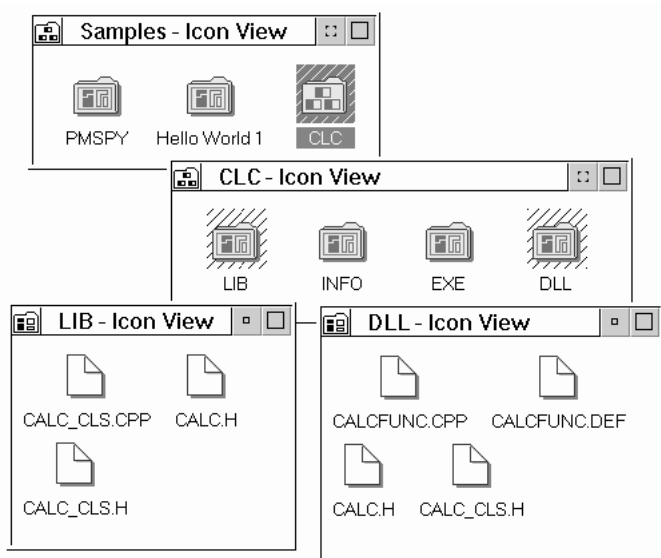


Figure 2. A Composite Project (CLC) and Two Projects (DLL and LIB)

## Actions Profiles

The WorkFrame/2 product uses the term *action* in the same sense that the OS/2 Workplace Shell does: an action is a command performed on an object. In the WorkFrame/2 environment, objects include files, projects, and composite projects. You can control which actions appear on the pop-up menus of these objects and set options for each action. The set of actions associated with one or more projects is known as an *actions profile*. Each actions profile is represented by an icon. You can see the actions in the actions profile by opening up its **Settings** note book. Actions can be configured using an interface like that shown in Figure 3.

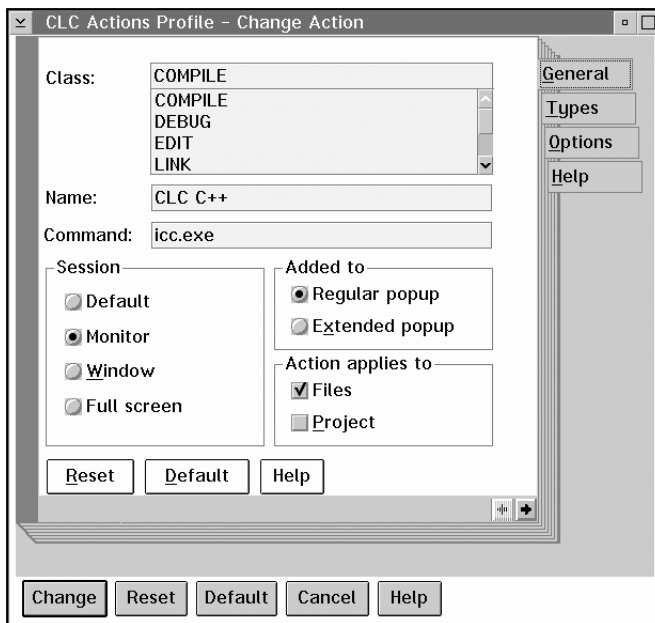


Figure 3. Changing an Action in an Actions Profile

The actions profile defines a number of things, including:

The class you want the action to belong to. Actions belonging to the same class are grouped together (see Figure 6 on page 11).

The command used to perform each action in the actions profile.

In Figure 3, the action with the name **Link** is accomplished by starting the program **link386.exe**.

The file mask on which the action can be performed. Most actions are performed on only certain types of files. For example, an action that starts a C compiler would not be useful on executable (.EXE) files. Therefore, to specify that the action only appears on the menus of C source files, you would specify the \*.C mask.

The name of the dynamic link library (DLL) containing the interface for setting the action's options.

Environment variable settings (not shown). For example, you might want to append the PATH environment variable with another path whenever the action profile is used. You can also set your own environment variables. Whatever you specify overrides the current environment settings when the action is started. When the action is completed, the environment reverts to the state it had before the action was started.

Language products, such as compilers, that are enabled for the WorkFrame/2 product typically supply an actions profile and options DLL that you can add to the ones included with the WorkFrame/2 product.

Actions are not limited to those used directly to build the software application. Any tools, such as those for editing icons or counting lines of source code, can be integrated as an action through an actions profile.

## Actions and Projects

Each project has an associated actions profile. You specify the actions profile in one of the settings note book pages for the project. Another page (see Figure 4) lets you specify options for each action.

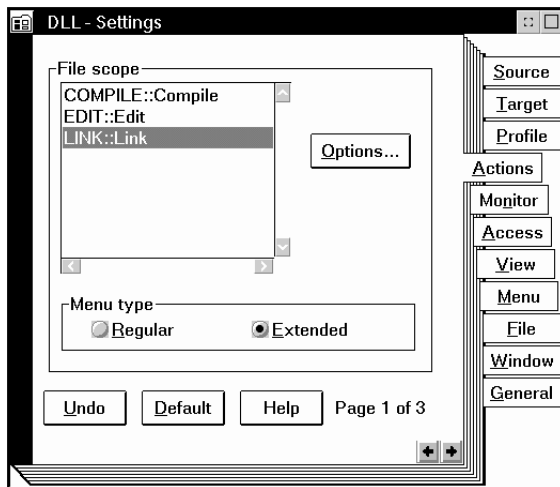


Figure 4. Actions Page in a Project's Settings Note Book

The **Options...** push button on this page lets you specify the options to be used when the selected action is invoked. If the program used to perform the action is enabled for the WorkFrame/2 product, you can use a customized graphical user interface like the one in Figure 5 to select the options. If no customized interface is available, use the one provided by the default options DLL included with the WorkFrame/2 product.

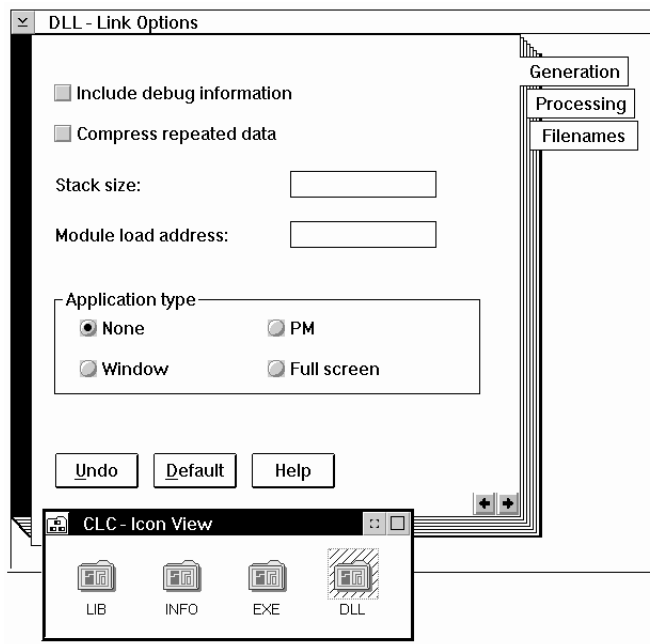


Figure 5. Options Interface for the OS/2 Linker

Because the options are saved with the project, each project has its own, unique set of options for each action.

## Performing Actions

Setting up projects and actions is only the organizational aspect of software development. Most of the development process is a cycle of creating the source code, building it into an executable form, and then modifying it until you get the product you want. How do you perform these actions using the WorkFrame/2 product?

When you want to perform an action on an object in the Workplace Shell (such as editing a file), you just point to the icon and select an action from its menu. In the same way, with the WorkFrame/2 object-oriented approach, you first select the icons you want to perform an action upon, and then you select an action from a pop-up menu. Because the options for the action are set in advance and stored with the project, you can ignore them unless you want to change them. The actions you can perform are not limited to those provided by the WorkFrame/2 product. You can define new actions in the actions profile and these actions will automatically appear on pop-up menus such as the one shown in Figure 6.

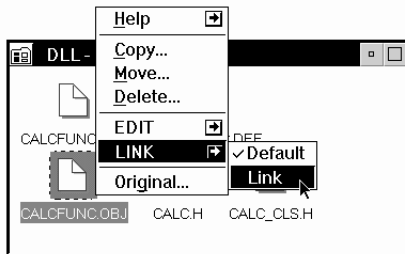


Figure 6. Performing an Action

You can choose to display the output of an action in a text window, a full-screen window, or a WorkFrame/2 monitor window (see Figure 7).

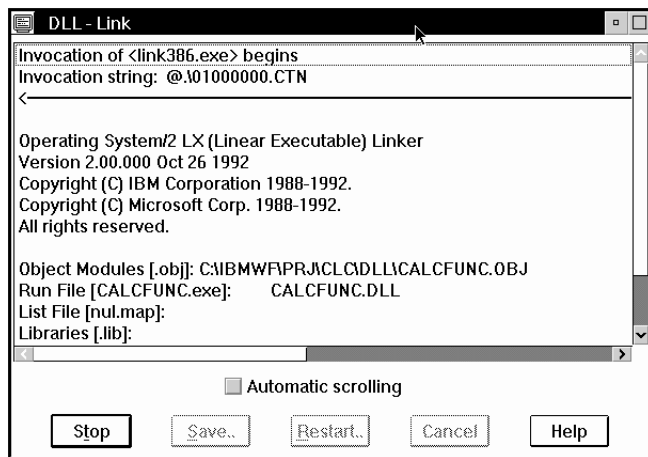


Figure 7. WorkFrame/2 Monitor Window

If an error message in the window contains the name of the file in which the error occurred, you can click on the message to start an editing session for that file. If the error message also contains the location of the error within the file, a WorkFrame/2-enabled editor (such as the OS/2 Enhanced Editor) will automatically scroll to the error's location and highlight it. These capabilities make the development process smoother and more efficient.



---

## Learning to Use the WorkFrame/2 Product

Whether you have used a previous version of the WorkFrame/2 product or not, the more familiar you are with the OS/2 Workplace Shell basics, the more productive you will be with the WorkFrame/2 Version 2.1 product. View the OS/2 **Start Here** tutorial to learn about the Workplace Shell if you have not already done so.

When you are comfortable with using the Workplace Shell, open the WorkFrame/2 folder on the Desktop. Once it is open, select the **Information** icon to open its folder and then select the **IBM WorkFrame/2 Tutorial** icon to learn about the WorkFrame/2 product.



---

## Installing the WorkFrame/2 Product

This section will guide you through the WorkFrame/2 installation program. Online help is available for each option, field, and push button. You can get help from the **Help** pull-down menu, or by making the field or push button active and pressing F1. For general information about the currently active window, press F2.

### Which installation procedure?

You must be running OS/2 Version 2.1 or higher to install and run version 2.1 of the WorkFrame/2 product.

If you are installing the WorkFrame/2 product on a workstation, follow the steps in "Installation on a Workstation" on page 16. If you are installing it on a local area network (LAN), follow the steps in "Installation on a LAN Server."

---

## Installation on a LAN Server

You can install the WorkFrame/2 product on a LAN server, either to serve as a base for other installations or to be shared by multiple users.

If you are installing the WorkFrame/2 files on a LAN server to be used as a base for future installations:

1. Insert the first WorkFrame/2 diskette into drive A.
2. From the server, copy the WorkFrame/2 files and directories from the diskette to the target directory on the server. You can use either the Workplace Shell **Drives** program or the `xcopy` command. In the latter case, the command syntax is:

```
xcopy a:\. target-directory /s
```

The WorkFrame/2 directory and file structure are copied to the server in the *target-directory* specified. The installation program is also copied to this directory.

3. Repeat the previous two steps for each WorkFrame/2 diskette.

To then install the WorkFrame/2 product on a client machine, follow the usual installation procedure, beginning at the first step.

If you will be sharing the WorkFrame/2 product across a LAN, follow the normal workstation installation procedure using a target directory on the LAN. Each user sharing the files can then set up the WorkFrame/2 environment on the client machine with the **Selective setup** option of the **Setup** program.

---

## Installation on a Workstation

1. If you are installing directly from the WorkFrame/2 diskettes, insert the first diskette into drive A. Click on the **Drive A** icon to open a view of this drive. Then click on the **WFSETUP.EXE** program to start it.

If you are installing from a LAN, use the **Drives** program to go to the *target-directory* (as defined in Installation on a LAN Server) on the server machine. Once you have opened a view of the target directory, click on the **WFSETUP.EXE** program to start it.

**Note:** You can also do the above steps from a command line, by changing to the appropriate drive and directory, and then entering `wfsetup`.

2. If you have not disabled the logo display from the operating system, the IBM logo appears. Click on the **OK** button or press Enter to proceed with the first of the two phases of installation.

A window appears with the installation options. The `READ.ME` file is displayed in the main installation window. Read this file for the latest information about the WorkFrame/2 product.

3. Specify the drive and directory where you want the WorkFrame/2 to be installed. The IBM-supplied defaults specify IBMWF on your boot drive as the target installation directory.

**Note:** If you change the target directory, substitute your directory name wherever `C:\IBMWF` appears in this document.

4. When you have set your options, click on **OK** or press Enter. You are prompted for the diskettes during the installation. A window shows you the status of the installation program, including which files are being installed and the percentage of the total bytes that has been installed.
5. When the installation is complete, a message box appears. Click on **OK** to return to the main installation window, and then select **Close** from the system menu to end phase 1 of the installation program.
6. Reboot your system. Phase 2 of the installation will start automatically once the operating system has restarted.

#### **Backup Files:**

Before it modifies your CONFIG.SYS file, the installation program first creates a backup copy with the name CONFIG.BAK. If this file already exists, a window appears. You can overwrite the existing backup file, or type a new file name. Then click on **OK**, or press Enter.

If you do not want to create a backup file, click on **Cancel** to close the window and continue with the installation.

---

#### **Other Setup Functions**

Besides installing the WorkFrame/2 product, you can also use the **Setup** program to:

Add users to a LAN-based WorkFrame/2 environment.

Migrate projects and language profiles from the previous version of the WorkFrame/2 product to this version.

Reinstall or remove the WorkFrame/2 product.

See the **Setup** online help for information about these tasks.



---

## What's New for Version 2.1

If you have been using previous releases of the WorkFrame/2 product, you will notice how different this version is. The main window with its action bar and pull-down menus is gone. Instead of a main window and secondary windows, you see folders and icons. Instead of an action bar and pull-down menus, each icon has its own pop-up menu. And instead of using WorkFrame/2-specific controls for customizing the environment and using the mouse, you can now use the the standard Workplace Shell techniques.

Not only has the WorkFrame/2 product been redesigned to take advantage of the Workplace Shell, but we've also added some important new features:

Each project can have its source code distributed among multiple directories.

There is no distinction between language profiles and tool settings. Both of these are now organized through the more generic form of actions profiles. Using actions profiles, you can define new actions as illustrated in "Actions Profiles" on page 7.

**Note:** Actions profiles do not replace the OS/2 association techniques; they complement them.

The Make File Creation utility is more versatile. It now lets you include any action defined in the actions profile.

The installation program has been replaced with a **Setup** program that lets you install, remove an installation, and migrate projects and language profiles from previous WorkFrame/2 versions.

---

## Communicating Your Comments to IBM

IBM WorkFrame/2  
Introduction

Version 2.1

Publication No. S82G-3740-00

If there is something you like—or dislike—about this book, please let us know. You can use one of the methods listed below to send your comments to IBM. If you want a reply, include your name, address, and telephone number. If you are communicating electronically, include the book title, publication number, page number, or topic you are commenting on.

The comments you send should only pertain to the information in this book and its presentation. To request additional publications or to ask questions or make comments about the functions of IBM products or systems, you should talk to your IBM representative or to your IBM authorized remarketer.

When you send comments to IBM, you grant IBM a nonexclusive right to use or distribute your comments in any way it believes appropriate without incurring any obligation to you.

If you are mailing a readers' comment form (RCF) from a country other than the United States, you can give it to the local IBM branch office or IBM representative for postage-paid mailing.

If you prefer to send comments by mail, use the RCF at the back of this book.

If you prefer to send comments by FAX, use this number:

- United States and Canada: 416-448-6161
- Other countries: (+1)-416-448-6161

If you prefer to send comments electronically, use the network ID listed below. Be sure to include your entire network address if you wish a reply.

- Internet: [torrcf@vnet.ibm.com](mailto:torrcf@vnet.ibm.com)
- IBMLINK: [toribm\(torrcf\)](mailto:toribm(torrcf)@vnet.ibm.com)
- IBM/PROFS: [torolab4\(torrcf\)](mailto:torolab4(torrcf)@vnet.ibm.com)
- IBMMAIL: [ibmmail\(caibmwt9\)](mailto:ibmmail(caibmwt9)@vnet.ibm.com)



---

## Readers' Comments — We'd Like to Hear from You

IBM WorkFrame/2  
Introduction

Version 2.1

Publication No. S82G-3740-00

Overall, how satisfied are you with the information in this book?

	Very Satisfied	Satisfied	Neutral	Dissatisfied	Very Dissatisfied
Overall satisfaction					

How satisfied are you that the information in this book is:

	Very Satisfied	Satisfied	Neutral	Dissatisfied	Very Dissatisfied
Accurate					
Complete					
Easy to find					
Easy to understand					
Well organized					
Applicable to your tasks					

Please tell us how we can improve this book:

Thank you for your responses. May we contact you? Yes No

When you send comments to IBM, you grant IBM a nonexclusive right to use or distribute your comments in any way it believes appropriate without incurring any obligation to you.

Name \_\_\_\_\_ Address \_\_\_\_\_

Company or Organization \_\_\_\_\_

Phone No. \_\_\_\_\_

PLACE  
POSTAGE  
STAMP  
HERE

IBM Canada Ltd. Laboratory  
Information Development  
21/986/844/TOR  
844 DON MILLS ROAD  
NORTH YORK ONTARIO CANADA M3C 1V7

-----  
Fold and Tape

**Please do not staple**

Fold and Tape

**Readers' Comments — We'd Like to Hear from You**  
S82G-3740-00

**IBM®**



IBM®

Part Number: 82G3740

Printed in U.S.A.

