



## Welcome to *Image Gallery 2.0!*

**Image Gallery 2.0 by ANET** is a 16-bit picture browser designed to view image files on your computer. You can view simultaneously up to 225 pictures in a single window. It supports BMP, GIF, ICO, JPEG, PCX, PNG, TIF and WMF formats. Easy conversion between formats.

[Tool Enhancements](#)

[Installation and Distribution Notes](#)

[How to Order](#)

[Program Customization](#)

[Image Gallery in Action](#)

[Portfolio](#)

[File Arrangement Functions](#)

[Clipboard Operations](#)

[Image Conversion](#)

[Zooming Image](#)

[How To...](#)

[Tips](#)

[System Requirements](#)

[Other Products](#)

## Options

### Layout

- **Show up to.** Define the number of images you want to see simultaneously on a single screen (up to 225). Note, the numbers you define are the dimensions of an image array (horizontal and vertical).
- **Show files of a specified size (Smaller, Bigger, All).** It is a filter. Very helpful when you are seeking rather small images. Showing large images is a time and resource consuming operation. You need not be bothered by it. If you expect the image of interest is among the larger images, this option allows you to filter small ones. You may view all images by selecting "All". Note, selected file size filter will be noted in the upper right corner of the Vertical toolbar.
- **Vertical toolbar (Left, Right).** You may have the vertical toolbar on the left or right side of the screen.
- **View images.** Each image in a gallery can be shown either resized or not resized.
- **Don't resize.** Image will not be resized. If the image is smaller than the frame then the image will be shown centered. Otherwise, if the image is larger, it will be clipped and only the middle of it shown.
- **Fit images to frame.** Images will be resized proportionately to frame. If the image is smaller than the frame then the image will be stretched. If the image is larger it will be shrunk. In any case you will be able to see the whole image.
- **Smart view.** Result depends upon the image size. If the image is smaller than the frame, the image will be presented in actual size. Otherwise, the image will be sized proportionately to frame.

### Full View Options

- **Inframe.** Shows the image in a medium sized pane. If the image is smaller than the pane itself, the image will be centered in the window. If the image is greater, scroll bars appear. In this view you still have access to the toolbars.
- **Whole screen.** Shows the image in a full screen view. If the image is smaller than the pane itself, the image will be centered in the window. If the image is greater, scroll bars appear. This mode is helpful when you want to see relatively large images or don't want anything other than the image itself on the screen.
- **Smart.** Automatically chooses between Inframe and Whole Screen, depending on size of the image.

### Hints

- **Show function hints.** Rest the mouse pointer over the control to see the description.
- **Show image file names as hint.** To identify an image file in Image Gallery's showcase you may rest mouse pointer to display its filename.

## Color

- **Backdrop.** Allows you to set Image Gallery's backdrop color.
- **Frame.** Allows you to set the image frame background color.
- **Set Colors the Same.** Allows you to equalize the backdrop and image frame background colors.

## Tips

- Finding image files. First select folder with which to work. Then highlight file in "File Type" toolbar. Type the prefix for the file you are seeking. The list of files will scroll to the nearest (alphabetically) matching file. You may then display this file by pressing enter or double clicking the file name.
- In the "File Type" pulldown box the numbers next to file types indicate how many files of that type were found.
- Image conversion. When converting, the image name remains the same as the source image. The file extension changes to reflect the destination file type. Selecting a different destination file type (BMP, GIF etc) changes the extension of the file name. Typing a new file name changes the name part.
- In the vertical toolbar the display boxes may be resized by moving the line dividing the two display boxes.
- If you click on an image, its filename will be selected in the File List Box.
- Double click on an image to maximize it. To resize, double click it again.
- To run Image Gallery from DOS command line type (e.g.) :

c:\IGallery\ImGallry [FileName]

where [FileName] is the full path of the file you want to see (optional).

- There is extensive opportunity to use the right mouse button throughout this program. For example, use the right mouse button to:

- Add images to [Portfolio](#)
- Convert the [Current image](#) to different file formats
- Copy the [Current image](#) onto the Clipboard
- Copy the [Current image](#) file path onto the Clipboard
- Print the [Current image](#)
- Etc.

- To view Portfolio, click on the Portfolio button. Note, the number on the button indicates the number of images stored in your portfolio.

## **Distribution notes**

Image Gallery is distributed in the following files:

Imgallery.exe	Fully functional program file.
Imgallery.hlp	This help file.
Sky16v3c.dll	For the Image Gallery EXE to run.
Readme.txt	

Shareware = \$39.95 USD

Upon installation Image Gallery is fully functional for evaluation purposes. After 30 days, if Image Gallery remains unregistered, GIF, JPEG, PNG, PCX and TIF capabilities will be blocked. Registration will restore full capabilities. Please, feel free to register. See [How to order](#) for additional information.

## **Installation**

Run Setup and follow the installation instructions. All of the files will be copied into a single directory.

## Shareware products of *Anet*

Download these products from our Web-site  
(<http://www.anetusa.com>)

### AnetHelpTool v.4.XX

**AnetHelpTool**, an easy to learn and use WYSIWYG Help authoring system.

Extremely useful for software developers or corporate use. Add Help to existing program bundles or describe system useage. Create custom Index and Contents pages for your specific needs. Use for onscreen training for employees.

It creates RTF and help files (HC31.exe required). It has two modes: Runtime and Design. In Design Mode you can create and edit your document. Runtime emulates an actual WinHelp environment. Even before compiling, your document will look like a real help file.

Extraordinarily low priced. (Shareware, \$99).

**Note:** This Help file was produced using AnetHelpTool system.

### Search32 v.3.XX

Finalist in Ziff-Davis Publishers (PC Magazine - ZD-Net) Shareware Awards!

Five-Star Rating! Fast! Powerful, Flexible and Easy to Use!

**Search32** text search and retrieval program. Similar in purpose to Find Fast from MS Office 32, but more flexible, faster and rich in added features and the cost is only \$39.

Before initiating a search you create index files (very fast and easy), then just type the words for your query. Search32 instantly finds all files containing these words. It will show a text string with target words highlighted. Just double-click to launch and view the entire file.

Fastest search tool for Windows95 and WindowsNT.

Searches for text both on the local computer and on Microsoft network.

Supports English, Russian, German and French.

Built-in browser to work with HTML files.

Automatic background updating of index files.

Unique Cache Watcher mode!

A terrific value. (Shareware, \$39)

## Pygmalion 3D

**Pygmalion 3D** Simple, Fast, Powerful! Anet's three-dimensional graphics editor.

Create complicated 3D objects. With Pygmalion you are the sculptor. Powerful tools for easy creation of complicated objects. Combine individual objects to produce fascinating scenes. Great depth, precision and detail.

Despite its speed and feature-rich power, Pygmalion 3D is easy to learn. A great tool for all, from professional artists to unskilled doodler.

Working with Anet's Pygmalion 3D is pure enjoyment. Supports 3-D Studio format.

## HTeMail

An easy to learn and use WYSIWYG HTML editor. Create, edit, view, send and receive HTML documents! No need to know HTML. You can create WWW pages, documents with hypertext links embedded.

Freeware 16bit application for Windows 3.x and Windows 95. HTeMail is implemented in two versions: as HTML extension to MS Exchange and a standalone HTML editor.

Anet is looking for cooperation with any entity that may benefit from our experience in Internet related areas.

## How To...

### ... display images located in a specific directory

First choose the directory from Directory List Box. All images located in the specified directory will be shown in the File List Box. To display them press the Display button.

### ... display images located in a specific directory, including subdirectories

In the Directory List Box choose the directory and press the Recurse button (located above the directory box). All files found will be shown in the File List Box. To view them press the Display button.

### ... display a particular image in a larger pane

Double click on the image. It will be displayed on one of the two Full View panes depending on the Options setting. To leave Full View double click again or press the Back button.

### ... display images starting from a particular file in the File List Box

Just double click that file. Another set of images will be shown starting from that file.



## Options Dialog's "OK" Button

Saves all changes you have made. The Gallery will be repainted to match the new settings (except for Image Frame Color. It is a lengthy operation to repaint all the images and we decided not to trace it immediately. You will see the color change on the next set of images shown).

## Number of Images

The Gallery space will be equally divided into smaller frames as dictated by this option.

First digit is the number of frames arranged horizontally. The second digit is the number arranged vertically. The smaller these digits, the larger each frame. You can simultaneously view as many pictures as the number calculated here.

Image Gallery enables you to change this number from 1 to 225 (the number may be limited by the system resources of your computer).

## **"Restore" Backdrop Color**

Restores the color of backdrop, to that which it had at the time of calling the Option Dialog Box.

## **"Restore" frame color**

Restores the color of frame, to that which it had at the time of calling the Option Dialog Box.

## **Vertical Toolbar Alignment**

Align the vertical toolbar to the left or right side of the main window. If you change the toolbar alignment, the images on the Gallery will be repainted to fit the new toolbar alignment.

## **Show Image Name as Hint**

With this option checked, when your mouse cursor is on any image its filename will be shown in a text box as a hint.

## Option Dialog's "Cancel" Button

Closes the Option dialog box without any changes to the settings.

## **"Help" Button**

Calls Help file.



## Image Gallery in Action

Image Gallery is Anet's powerful, yet easy to learn, graphics viewing tool.

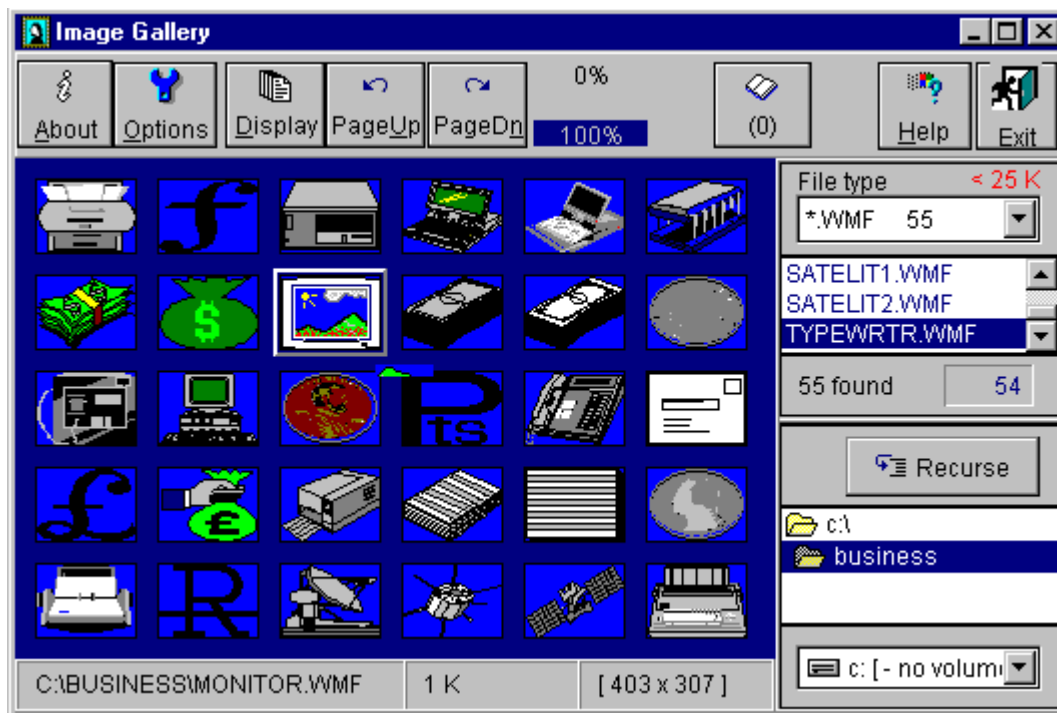
With it you can:

View up to 225 pictures simultaneously in a single window

Put favorite images into Portfolio to ease later viewing

Convert images to different image formats, arrange your image files

And more! We know you will enjoy using it.



## "Options" button

Calls [Options](#) dialog. Enables you to customize the Image Gallery environment.

## "Display" Button

Displays the first set of images. The number of images in the set is regulated by [Options](#) dialog box settings.

## "PageUp" Button

Displays the previous set of images. The number of images in the set is regulated by [Options](#) dialog box settings.

## "PageDown" Button

Displays next (or successive) set of images. The number of images in the set is regulated by [Options](#) dialog box settings.

## File Size Filter

Indicates the size of files to search for. Go to [Options](#) to change this setting.

## **"Exit" Button**

Quits the program.

## **"Recurse" Button**

Searches the current directory and all of its subdirectories for files specified in the "File type" field and matching ["File Size Filter"](#).

Toggles into "Stop" button to allow interruption of operation. Interruption acknowledged with small red bulb icon.



## **Current Image**

The "Current Image" is the one which holds the focus. Many functions available in Image Gallery (like Show FullView, Convert, put to Portfolio, Print, etc) relate to the current image.

## **"Back" Button**

Returns from Full View to the Gallery window.

## File Type

Specifies the type(s) of files to be shown. The numbers next to file types indicate how many files of that type were found.

## **File List Box**

Contains all files found in the current directory (as a result of a simple search) and including all of its subdirectories (recursive search), which matched the "File type" field. All the findings are sorted. You can double click on each file in the list box to show the set of images from that file.

## **Main Window = The "Gallery"**

This is the window where the images will be shown. Double click on a particular image to see it in full view.

## **Directory List Box**

Defines the initial directory for searching files of the specified type(s).

## **Files Found**

Indicates the number of files found as the result of a search.

## **Drive List Box**

Lists drives available on your computer.



## Tool Enhancements

These enhancements have been added since version 1.0:

- Supports GIF, JPEG, PCX, PNG, TIF image file formats
- Image format conversion capability
- Image file management functions
- Arranges favorite images into Portfolio (like bookmarking)
- Full view and image resizing options enhanced
- Zoom image and clipping, rotation
- And many, many other improvements and additional functions

## System requirements

Minimal configuration:

386 or higher

Windows 3.1

6MB RAM

256 colors (high or true color recommended)

640x480 graphical resolution ( higher resolutions recommended )

mouse

1MB space available on hard disk

Although the program works with 256 color resolution, if multiple images are shown on the screen, some of the images may have color distortion. We recommend using high or true color resolution.

## **"Show Portfolio" button**

Displays files from Portfolio. The number on the "Show my Portfolio" button indicates the number of images stored in your portfolio.

Files in Portfolio are arranged alphabetically.

Note, no file size or file type filters affect Portfolio. Portfolio is an entity independent of those.

## **Number of Files Shown**

If you start to show images from scratch (you press the "Display" button), this indicates the number of files already shown. Actually, it indicates the position of the image shown last in the File List Box.

## **Single Image Display Progress**

Represents the progress in showing an individual image from the group.

To interrupt processing the image, press "Stop" button.

## **Progress Showing Image Group**

Represents the overall progress in showing a group of images.

If you wish to interrupt processing, press "Stop" button.

## File Name

Full path and name of the Current image file.

## File Size

Size of the Current image file on disk.



## Image Dimensions

Dimensions of the [Current image](#) in pixels.

## Portfolio

Enables you to arrange your favorite images into a portfolio (like bookmarking). You may find this feature useful for different reasons.

Use this feature to mark your favorite images in a Gallery to look at later.

Allows you to organize image files into subject oriented groups (e.g. Animals, Cities, etc).

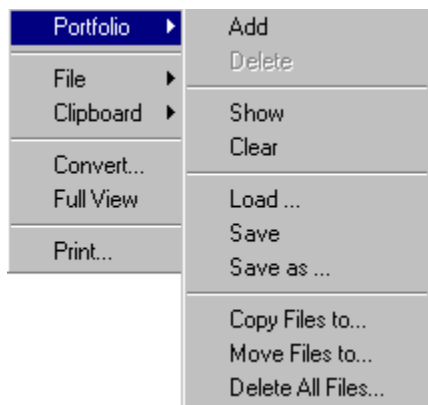
Mark your files to copy, move or delete them as a group (at once).

To see your current Portfolio images press "Show my Portfolio" button (opened book icon).

The number on the button indicates the number of images stored in your Portfolio. Files in Portfolio are arranged alphabetically. Note, no file size or file type filters affect Portfolio.

Portfolio is an entity independent of those.

You can Save Portfolio to disk, change the name of the Portfolio (Save as...), Load Portfolio from disk etc.



## **Portfolio - Add File**

To put your image of interest into Portfolio first right click on the image, then select Portfolio\Add.

Putting a file into Portfolio does not copy that file. Portfolio just keeps track of its location.

Files added to Portfolio will be arranged alphabetically.

To remove an image from Portfolio just select Portfolio\Delete.

## **Portfolio - Delete File**

To delete a particular image from Portfolio first right click on it, then select Portfolio\ Delete. Note, deleting image from the portfolio doesn't lead to physical removal of the appropriate file from the disk but deletes the track to its location only.

## Clear My Portfolio

Clears portfolio.

**Note**, clearing Portfolio does not delete image files from the disk. It only deletes the special tracking of their locations.

## **Load into Portfolio**

Load information into current Portfolio from the file.

## **Save Portfolio**

Saves current Portfolio changes. If the current Portfolio is not named, it will prompt to assign one. Otherwise, changes will be saved to the current Portfolio without prompt.

## **Change Portfolio's Name**

Allows saving Portfolio information under a different name.



## **Copy Portfolio Files**

Copy all portfolio files into a single directory. This operation duplicates appropriate files.

## **Move Portfolio Files**

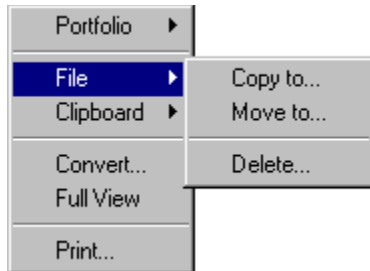
Move all the portfolio files to a single directory. This operation does lead to physical change in appropriate files' location.

## **Delete Portfolio Files**

Deletes all Portfolio files. This operation does physically remove appropriate files from their location.

## File Arrangement Functions

These functions allow you to perform various operations on the [Current image](#). Copy, move it to a different location, or delete it from disk.



## Copy File

Copy the [Current image](#) file to the location you specify.

## Move File

Move the Current image file to the location you specify.

## Delete File

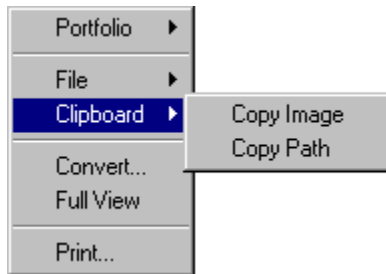
Delete the Current image file from the disk.

## Clipboard Operations

Enables user to put either the [Current image](#) or its location and file name (Path) onto the clipboard.

Note, putting an image on the clipboard does not delete path content of the clipboard. Clipboard has separate buffers for images and paths.

Copying successive images or successive paths to the clipboard overwrites the previous entry of the same type.





## Copy Image to Clipboard

Copies the [Current Image](#) into clipboard. You may then use the clipboard for pasting into an image editor.

Note, this is equivalent to a fast image conversion. You may copy to clipboard images of different formats (except icon files - they cannot be placed to clipboard) and have an instant bitmap file in the clipboard memory.

## Copy Path to Clipboard

Copy the location and file name (full path) of the [Current image](#) to clipboard.

## Image Conversion

**Source file.** The name of the image file you want to convert.

**Show source image.** Press this button to view the image you want to convert.

**Destination file.** The name of file to which you want to convert.

**Convert to.** Set of image file formats to which you may convert.

**Save resolution / quality.** The greater the resolution / quality, the better the destination image's quality and the larger its size.

**Show after conversion.** Automatically shows the destination file in the window after performing conversion.

**Resize image to fit.** Resizes the image proportionally to fit the frame. This setting does not affect the the image itself but only the view in this particular frame.

**"Convert" button.** Performs conversion.

## Full View

There are two panes in which to see images Full View:

- Medium Size (Inframe)
- Whole Screen

Medium Size is intended for showing rather small images. The advantage of this mode is having access to the toolbars.

Image in the Whole Screen pane appears without any surrounding frame to obscure the view.

Image can be shown on either pane. See [Options](#) for settings.

## Print

Print the Current image.

- File.** Name of the Current image to print.
- Setup.** Runs dialog to set printer options.
- Indent.** Set left and top indent for the picture.
- Image.** Set width and height of the picture.
- Keep proportions.** Maintains width / height ratio when you change width or height.
- Units.** Set the unit of measurement for the picture dimensions.

## How to Order

**You may order this and other Anet products from the following addresses:**

### Taylor Trade Talk

315 Alamo Square  
Alamo, CA 94507 USA

Contact us at

Phone : 510-743-2794  
or

Toll Free in USA:

888-709-2638 (888-709-  
ANET)

Fax : 510-743-2795  
E-mail : [ttt@anetusa.com](mailto:ttt@anetusa.com)

### Anet Company

Oktyabrsky prospect, 3  
Troitsk, Moscow region, Russia

Contact us at

Phone (7-095)334-53-13  
e-mail :

[anet@anetusa.com](mailto:anet@anetusa.com)

WWW :  
<http://www.anetusa.com>

Cost is **\$39.95** USD

Payment can be made by credit card, bank check, money order, bank draft, electronic transfer or cash.

### **To register by E-mail or Fax:**

We accept Mastercard, Visa, American Express and EuroCard

If you are concerned regarding financial security on the Internet please read [Credit Cards, Security on the Internet](#).

Fill in the [Order Form](#) and send it to Taylor Trade Talk. Be certain you have included the credit card number and expiration date, as well as your name, exactly as it appears on the card.

We will immediately send your registration information (preferably by e-mail). Enter your registration number into the initial "Nag" screen to ensure full implementation of Image Gallery's features.

### **To register by Telephone:**

Have your credit card information available.  
Call Taylor Trade Talk at 510-743-2794 or Toll free in U.S. 888-709-2638 (TTT-709-ANET)

We will give your registration information over the telephone and, later, confirm with an e-mail message.

**To register by Postal Service:**

Fill out the [Order Form](#).

Enclose credit card information, bank check, money order or bank draft and mail to Taylor Trade Talk.

Note, we gladly accept cash, but **send cash at your own risk**.

Upon receipt of funds we will immediately send registration information (preferably by e-mail).

**To register by Electronic Transfer:**

Upon request, we will provide bank routing numbers and information.

Be sure to notify us by e-mail, fax, telephone or postal service when the transfer has been initiated. We need your personal information in order to reach you.

Please note that electronic fund transfers incur costs on both ends. Your bank will charge you for sending the funds. In addition, you must **send an additional \$12.50** to cover costs we incur from our bank. It takes several days for our bank to acknowledge receipt of funds. At that time we will send registration information (preferably by e-mail).

**To register from Russia or the former Soviet Republics:**

Make payment arrangements by contacting Anet Company by e-mail, fax, telephone or postal service. See contact information above. Fill out [Order Form](#) and send, with payment to Anet.

Rubles or dollars accepted. Credit cards (Mastercard, Visa, American Express and EuroCard) accepted. Bank transfers and foreign delivery available.

## Order form

Please, send this order form to:

**World-Wide agent:** Taylor Trade Talk (see below for registration from within Russia)

315 Alamo Square  
Alamo, CA 94507 USA

Contact us at:

Phone : 510-743-2794

or

Toll Free in USA

888-709-2638 (TTT-709-ANET)

Fax : 510-743-2795

E-mail : [ttt@anetusa.com](mailto:ttt@anetusa.com)

---

### Image Gallery 2.0 Registration Form

Yes, I want to be a registered user of Image Gallery 2.0

Name : \_\_\_\_\_  
Phone : \_\_\_\_\_  
Address : \_\_\_\_\_  
City, State, Zip: \_\_\_\_\_  
Country : \_\_\_\_\_  
E-mail : \_\_\_\_\_

Credit Card information:

Visa

American Express

Master Card / Euro Card

Credit Card # : \_\_\_\_\_

Expiration Date : \_\_\_\_\_

Name on Card : \_\_\_\_\_

The program was available from: \_\_\_\_\_

Registration cost is \$39.95 USD

---

---

**In Russia:** Anet Company

Oktyabrsky prospect, 3

Troitsk, Moscow region, Russia

Phone (7-095)334-53-13

e-mail : [support@anetusa.com](mailto:support@anetusa.com)

WWW : <http://www.anetusa.com>





## Credit Cards, Security on the Internet

**Credit card security** is a topic that is much discussed, especially in regard to the use of credit cards on the Internet.

**We accept credit card payments via e-mail, fax, telephone or postal service.**

We are aware of no excessive security risks involved in sending such information over the Internet. **Risks exist in every credit card transaction.** Internet transmission adds no measurable additional risk.

Whenever you use a credit card someone, usually a stranger - a salesperson, a shipping clerk, a cashier, always someone, usually many people, has access to your card number.

There are an infinite number of ways an unscrupulous person can use to acquire a credit card number for illegal use. **Intercepting a transmission from the Internet may be one of the most difficult ways to steal credit cards.** Just the volume of information moving over the Internet provides an automatic anonymity that protects you from most eavesdroppers.

**All usual protections remain in place.** Your liability is limited by the credit card contract between you and your bank. You have the right to refuse any irregular charges. And, the maximum amount for which you can be held liable is limited, in most cases, to \$50.

We assure you that we protect your financial information to the utmost of our ability. **Our internal security is highly proficient.**

If you are not comfortable sending your credit card number by e-mail, we offer alternatives (fax, postal service or telephone). But, **e-mail is the fastest, least expensive and most efficient way to register this software.** We encourage you to consider the full situation.

## Zooming Image

Image Gallery allows you to zoom images (except .ICO and .WMF formats) in two ways.

1) In "Full View" press "+" or "-" to zoom-in or zoom-out.

2) To see any portion of the image enlarged, hold the left mouse button and frame the region you want to see zoomed. Release the button.

TIP: You can rotate the enlarged portion 180 degrees. Start framing the image at the bottom of the portion you wish to enlarge. The resultant enlargement will appear rotated.

To see the enlargement without rotation, start framing from the top of the portion you wish to enlarge.

## **"About" button**

Shows company and product information



