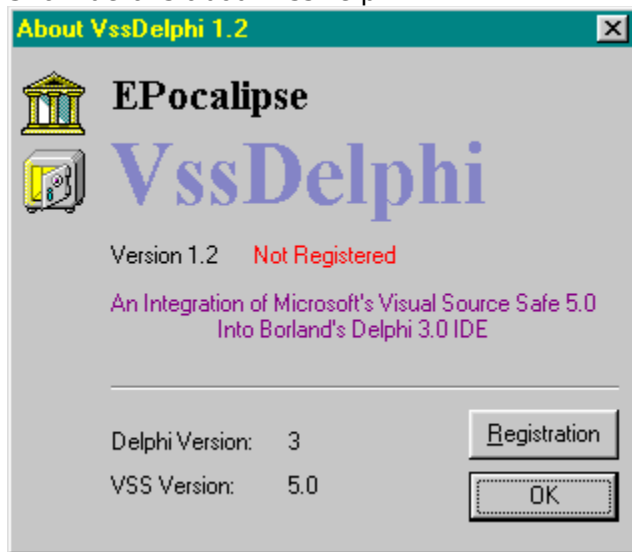


Show details about VssDelphi

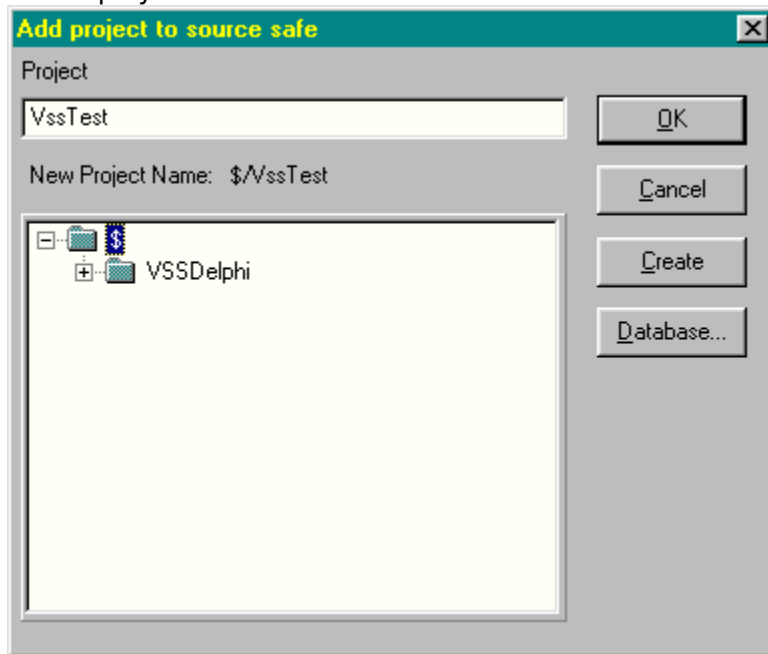


## Add To Source Control

This menu has 2 functions:

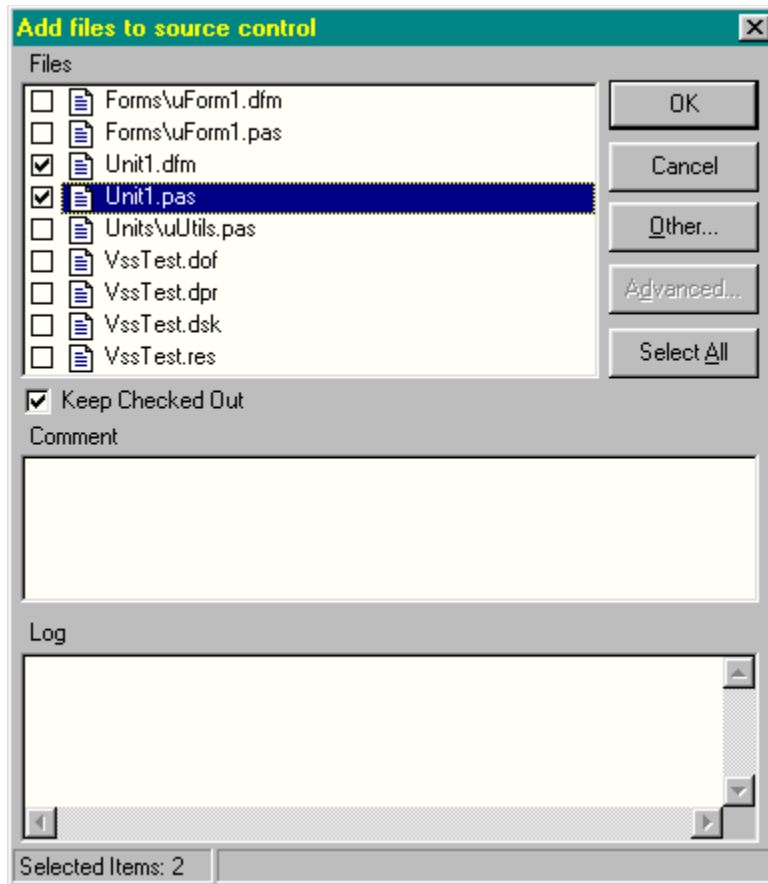
**Adding the current project to SourceSafe.**  
**Adding files to SourceSafe.**

When you start a new project, or open a project not currently in SourceSafe, this menu item will display this screen:



Select the Project under which you would like this project to be added, and enter a name for this project. The 'New Project Name' label will be updated to the name of the new project. You can click 'Create' to create a new project under the selected project. After you have created a project tree, Click OK to add the current project to SourceSafe.

If your project is already in SourceSafe or if you just added it to SourceSafe, this menu item will display this screen:



The Files Listbox will contain a list files in your project directory that are not in SourceSafe.

Ok - Add selected files to SourceSafe

Other - Allows you to select files not listed in the 'Files' listbox.

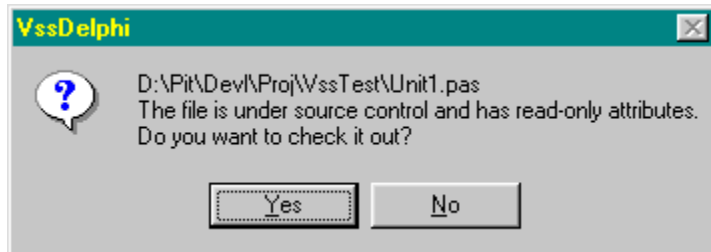
KeeP Checked Out - Keep the files checked out after added to SourceSafe.

Comment - Enter a comment for this operation.

Log - Results of the current operation.

## Automatic Check Out on Edit

When viewing a checked in file in the Delphi editor, you can check out the file by simply starting typing in the file. If the file is available for checkout, you will see this message:

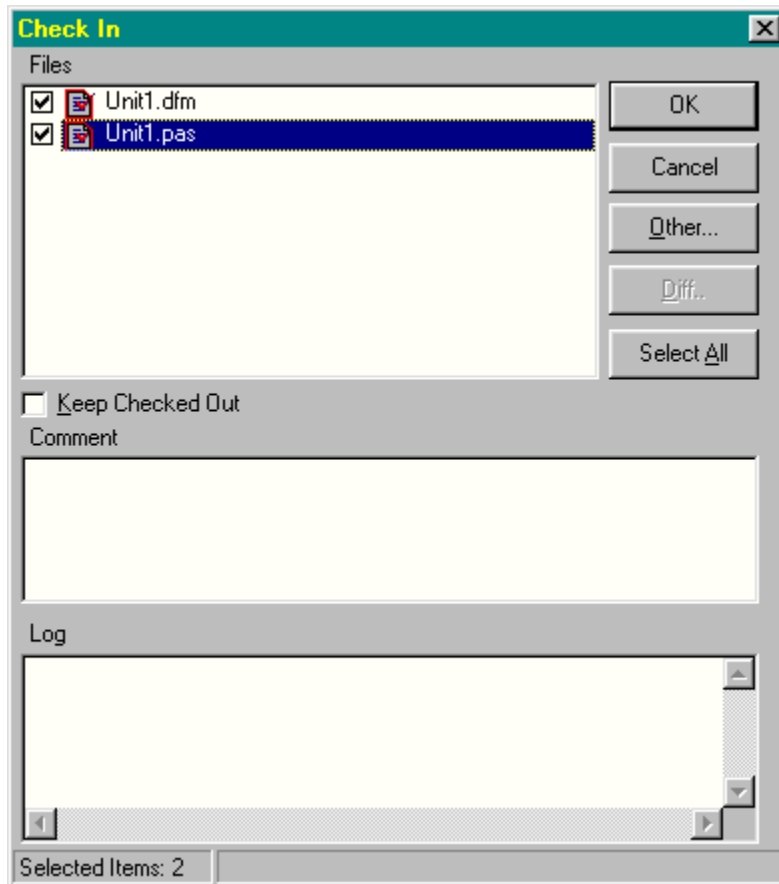


If you select 'Yes' the file (and associated files) will be checked out immediatly.

The status bar will immediatly reflect the file status:



## Check In



Checks files into SourceSafe. Use this when you finished editing a file, and want the changes to be stored in SourceSafe.

Ok - Check in the selected files.

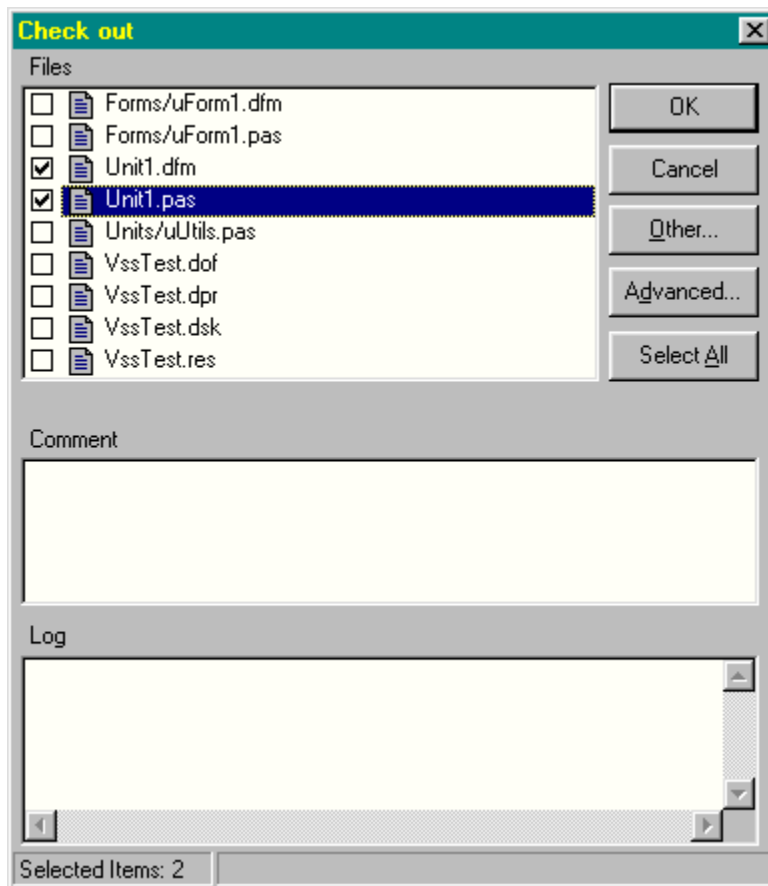
Other - Allows you to select files from other projects.

Keep Checked Out - Keep the files checked out.

Comment - Enter a comment for this operation.

Log - Results of the current operation.

## Check Out



Check out files from SourceSafe. This will allow you to edit a checked in file.

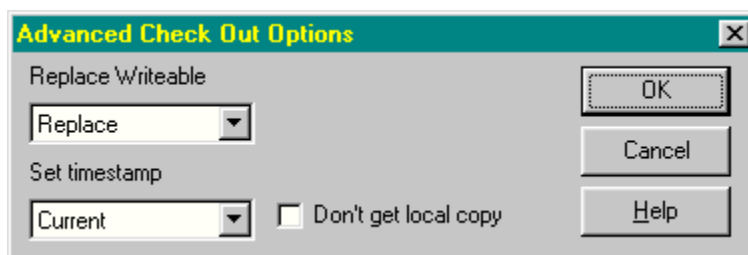
Ok - Check out the selected files.

Other - Allows you to select files from other projects.

Comment - Enter a comment for this operation.

Log - Results of the current operation.

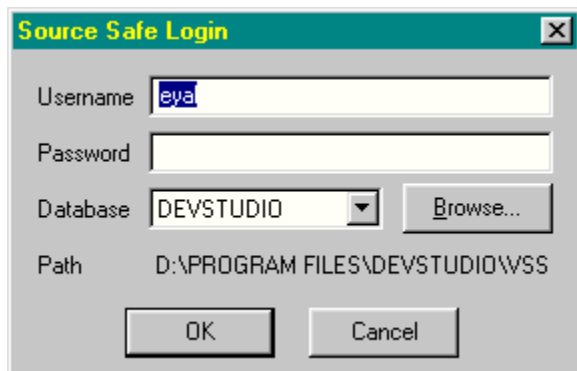
### Advanced



Replace Writeable - Select what to do when a

writeable copy of the file already exists.  
TimeStamp - Select the timestamp attached to the  
File.

## Change DataBase



If you are working with more than one SourceSafe database, you can change the current database by selecting the database from the list.

If the list does not contain the database you are looking for, you can click 'Browse' to find the srcsafe.ini file of that database.

You can only change databases when the project you are working on is not in SourceSafe, or no project is opened.

When you open a project that is already in SourceSafe, the database will automatically be changed.



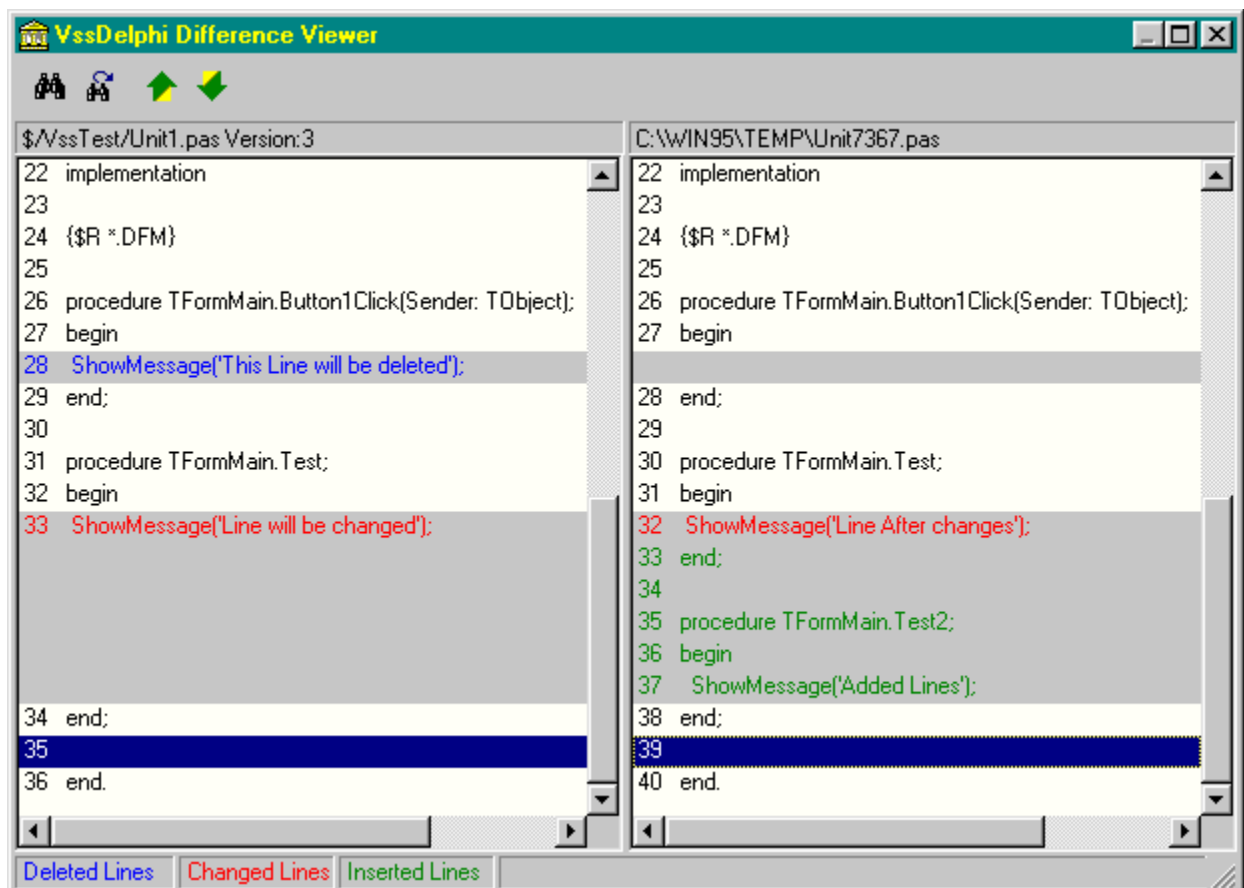
## Show Difference

When you click 'Show Difference' the file that is currently focused will be compared to its copy in SourceSafe.

If the files are not different, you will see this message:



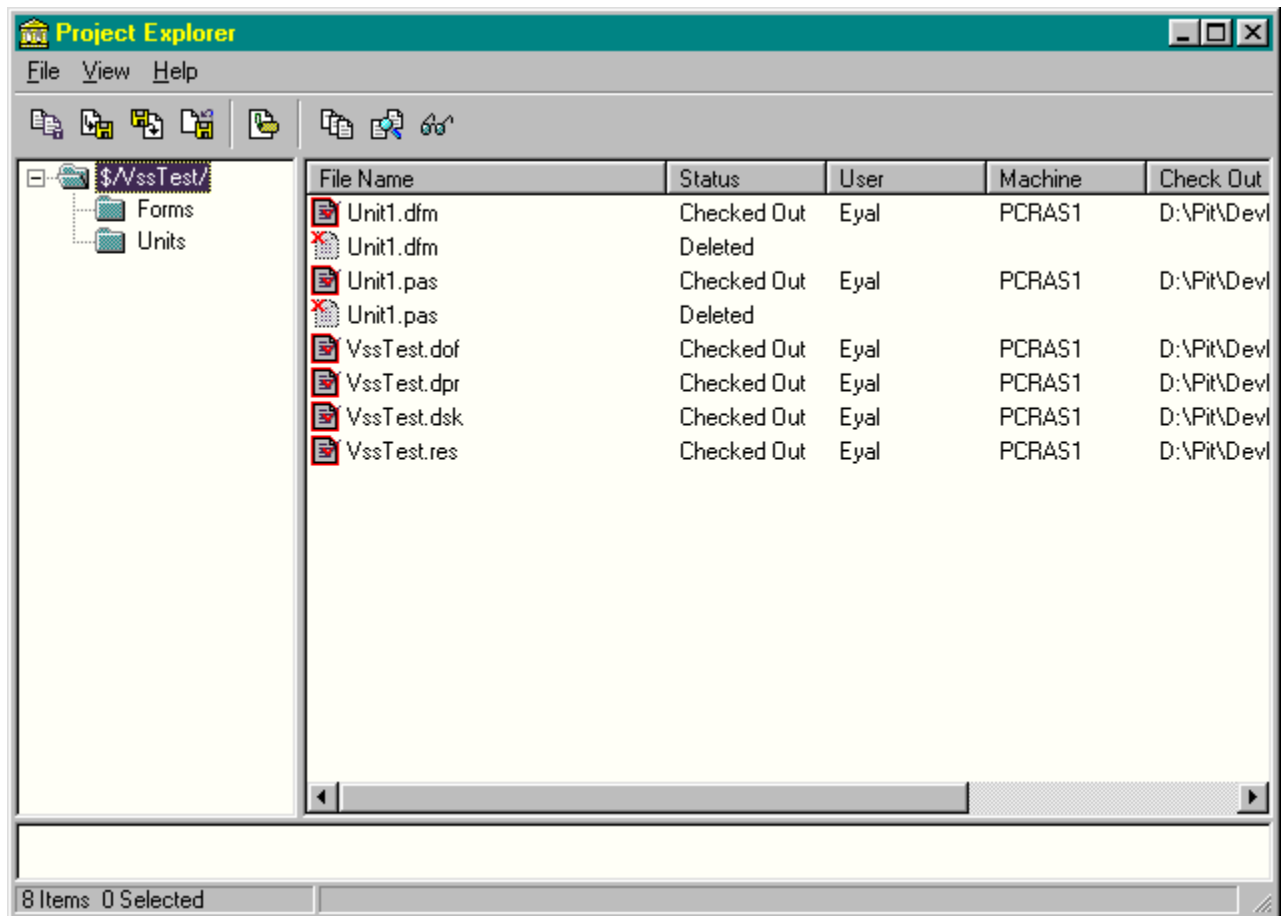
If the files are different, The VssDelphi Diff Viewer will be opened showing you the differences between the files:



## **Execute SourceSafe**

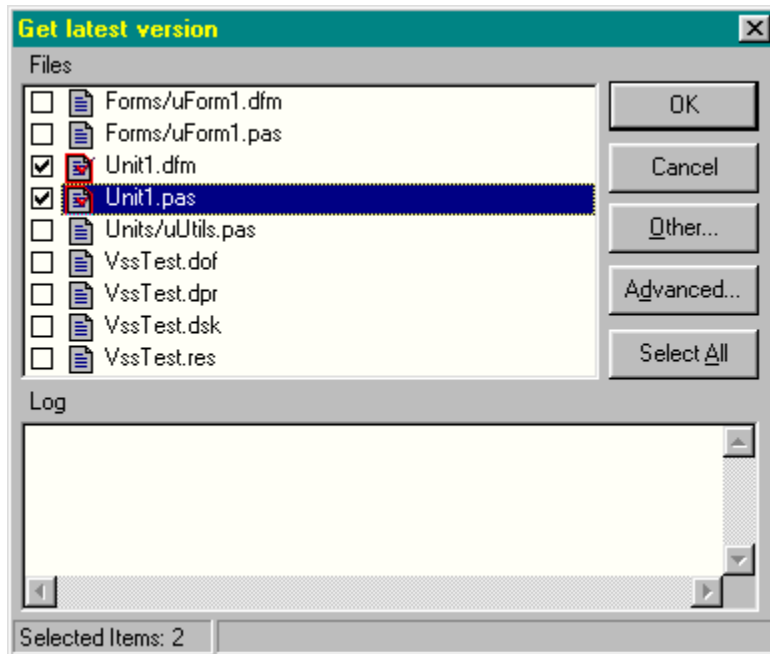
This menu item will execute Microsoft's Visual SourceSafe Explorer. Use this when you want need to do operations not accesible through VssDelphi.

## Project Explorer



The 'Project Explorer' allows you to browse your project files and perform some operations not available through the 'SourceSafe' menu. The 'Project Explorer' shows you the status of each file in your project with details like computer name and the user that checked out a file. It will also show you deleted files in your project, and allow you to recover or purge them.

## Get Latest Version



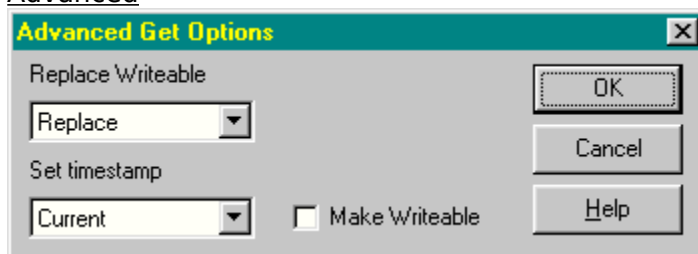
Gets the latest version of a file from SourceSafe. This will not allow you to change the file. Use this when you know the file has been changed and you want these changes to be reflected in your local file.

Ok - Get the latest version of the selected files.

Other - Allows you to select files from other projects.

Log - Results of the current operation.

### Advanced

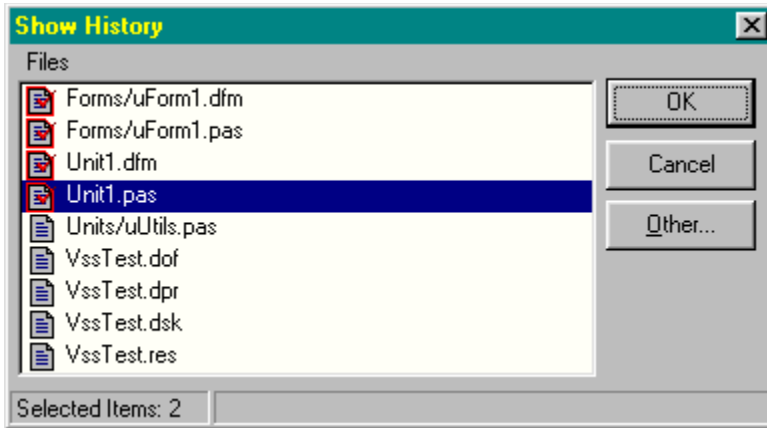


Replace Writeable - Select what to do when a writeable copy of the file already exists.

TimeStamp - Select the timestamp attached to the File.

Shows this help file

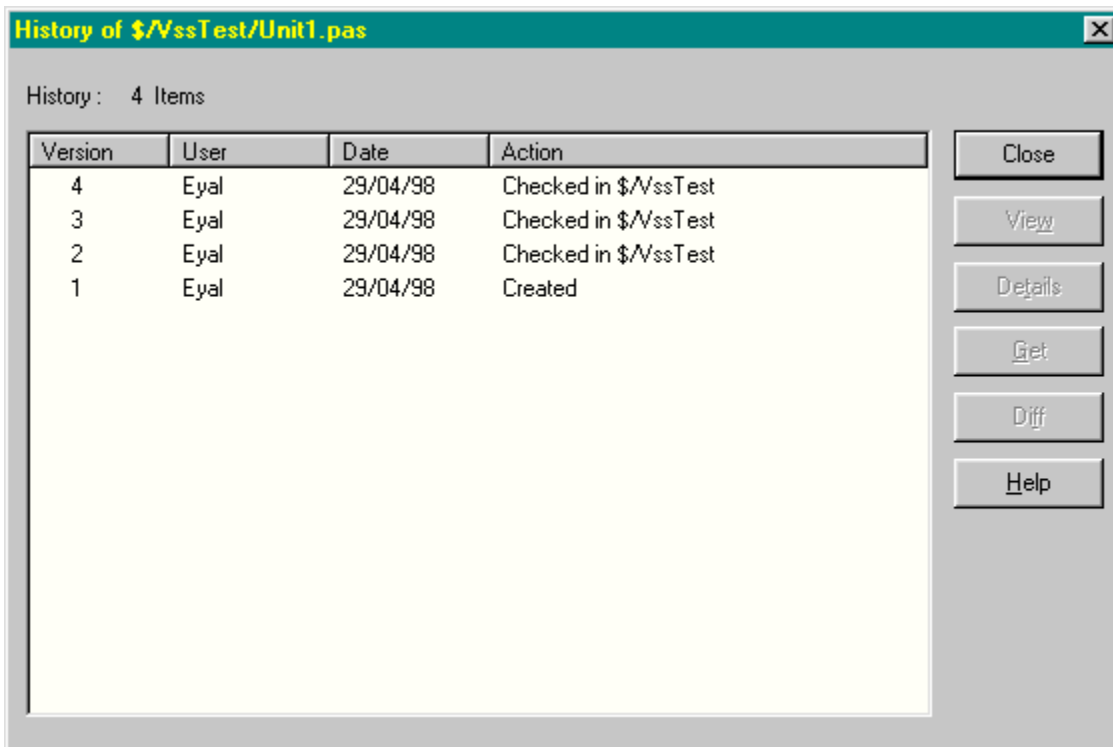
## Show History



Ok - Show the history of the selected file.

Other - Allows you to select files from other projects.

After clicking 'OK' this you will see this dialog:



This dialog shows the history of a file, including significant events like Creation date, Check in dates, and version numbers.

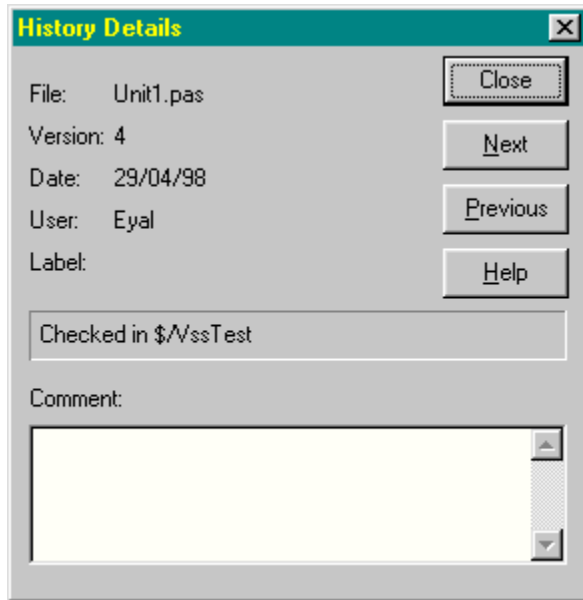
View - View the selected file version.

Get - Get the selected version.

Diff - If a version is selected - Shows difference between the selected version and the local version.

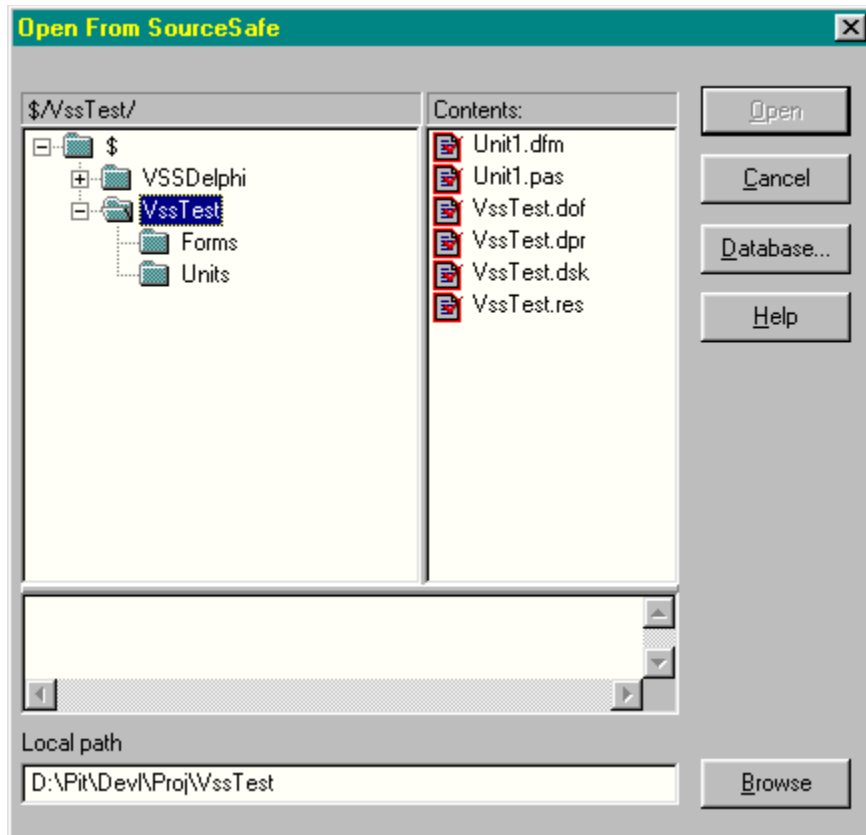
If two versions of a file are selected - Shows the difference between the two versions.

Details - Detailed info about the selected version.



Next,Previous - Moves to Next/Previous Version.

## Open From SourceSafe



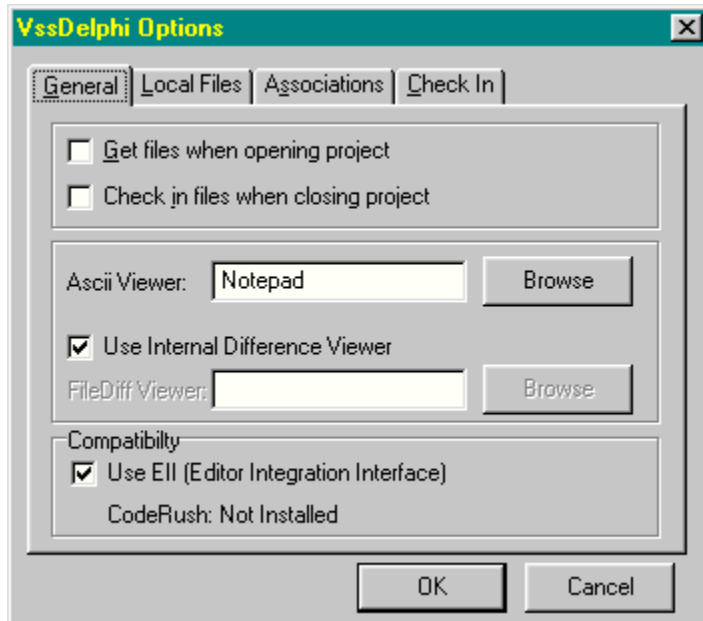
When you have a project that is already in SourceSafe, but VssDelphi does not enable you to Check out/Check in etc. files from that project, you should 'connect' the project with SourceSafe by choosing 'File|Open From SourceSafe' from Delphi. This will open up a dialog with SourceSafe project tree. Select the project you want to open and click ok. You can use this dialog to open individual files also. This will 'Get' the project to the directory specified, and will create a '.vss' file in your project file. This contains information about your project and is essential for VssDelphi to work properly.



## Options

Change several options to customize VssDelphi.

### General



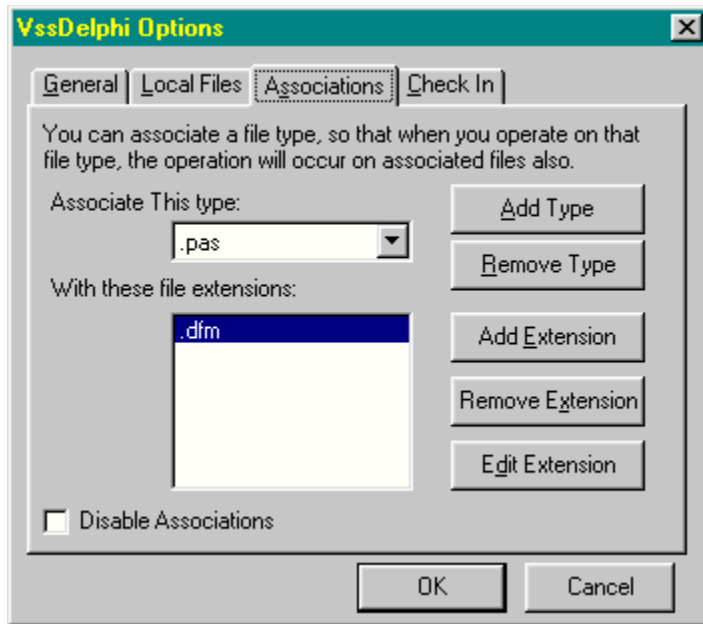
Get Files when opening project - Will prompt you to get the latest version of files in your project whenever you open a project.

Check in files when closing project - Will prompt you to check in you project files when you close your project.

Ascii Viewer - Type the path of an editor you want to use when viewing text files. If you leave this blank, Notepad will be used.

Diff Viewer - Type the path to a Difference Viewer program that can show difference between two files. if you leave this blank the internal Difference Viewer will be used (Recommended).

Use EII - Use Editor Interface Integration. This interface, written by Markus Spoettl, that allows the integration of components into the Delphi editor. This will enable the editor Popup Menu , and the Auto Checkout Features. This will only affect VssDelphi after Delphi is restarted.



### Associations:

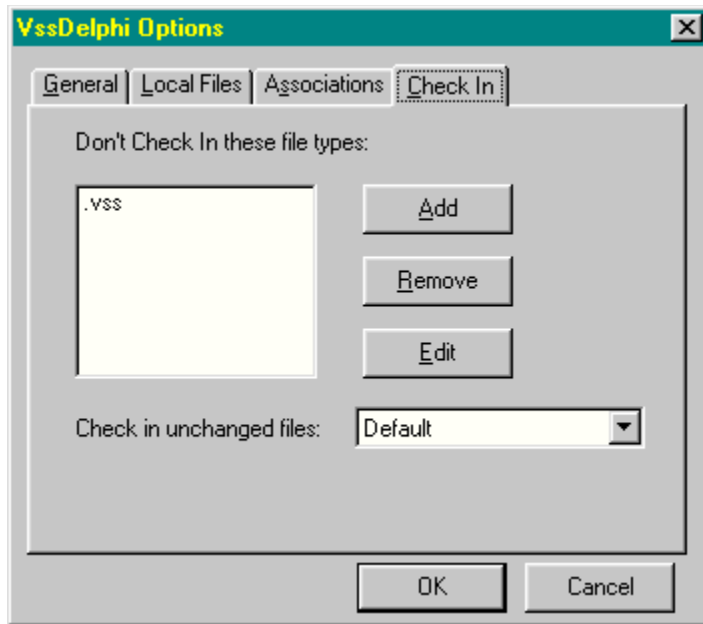
The associations feature allows you associate a file type with a list of other types. When doing operations like Check Out\Check In etc. Associated files will be automatically selected when selecting a file type. This will also work when Auto Checking Out files.

Associate this type - Select a file extension to be associated.

With these file types - Select the associated file extensions.

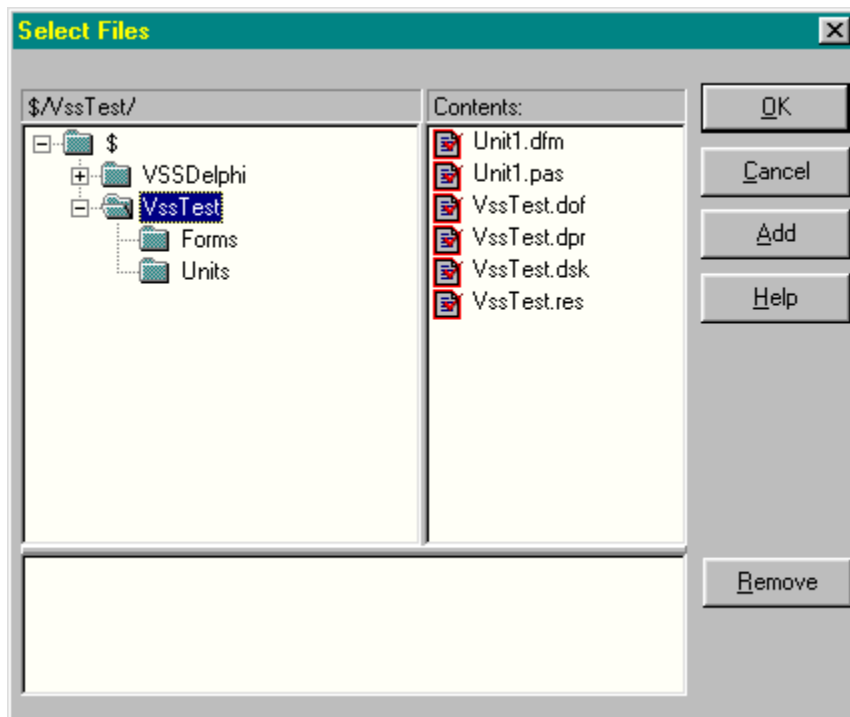
Disable Associations - You can disable associations by using this checkbox.

### Check In



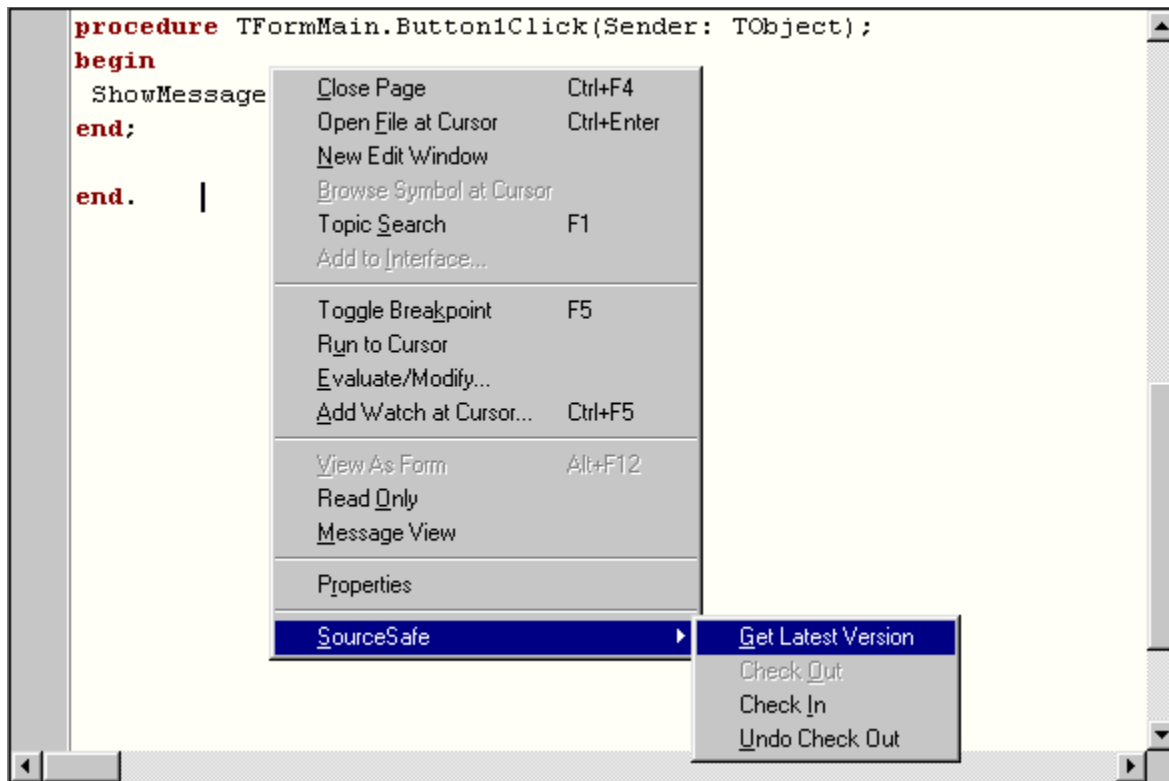
Dont Check in these file types - Allows you to select file extensions that should not be added to source safe. '.vss' is added here by default, to prevent this file from being checked in. This is essential for VssDelphi to work properly.

## Other Files Dialog Box



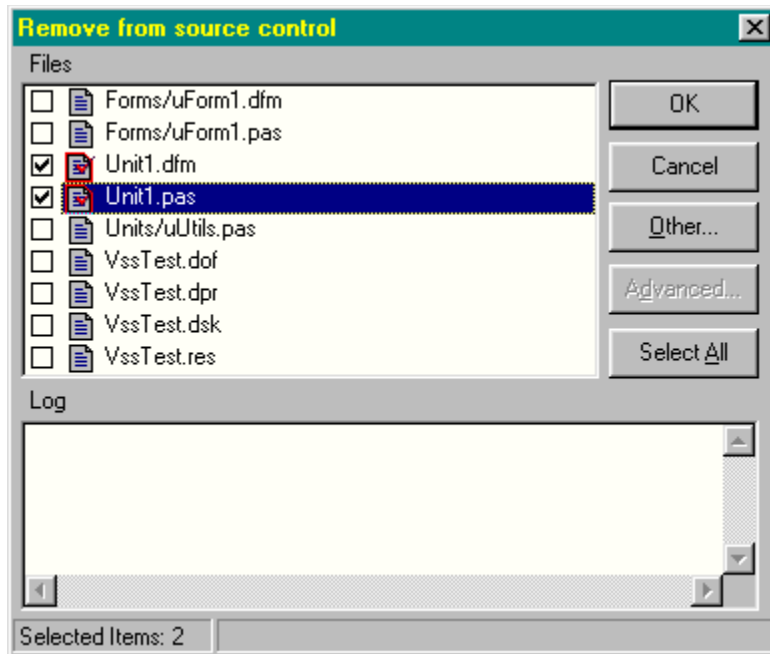
When you select 'Other' from a CheckOut/CheckIn etc. Dialog, You will see the 'Other Files' Dialog. Using this dialog, you can add files from other projects in SourceSafe. Browse your way through SourceSafe project tree, select files you want to add, and either press 'Add', or double click to file. If you want to remove a file from the list, just click 'Remove'.

## Editor Popup Menu

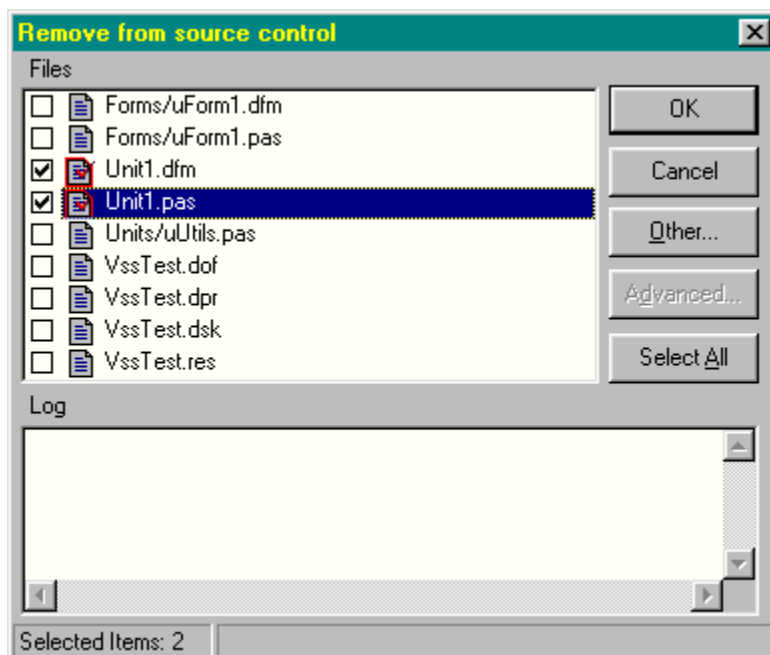


The editor popup menu allows you to perform some operations with a right click on the editor. For this options to work, you must enable EI.

## Remove From Source Control



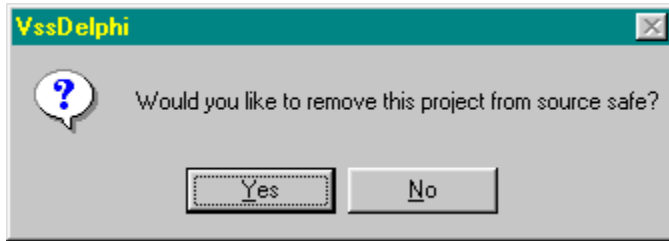
Remove files from SourceSafe. Use this when you want to delete a file from SourceSafe. If you accidentally deletes a file, you can recover it using the ['Project Explorer'](#).



Ok - Removes the selected files.

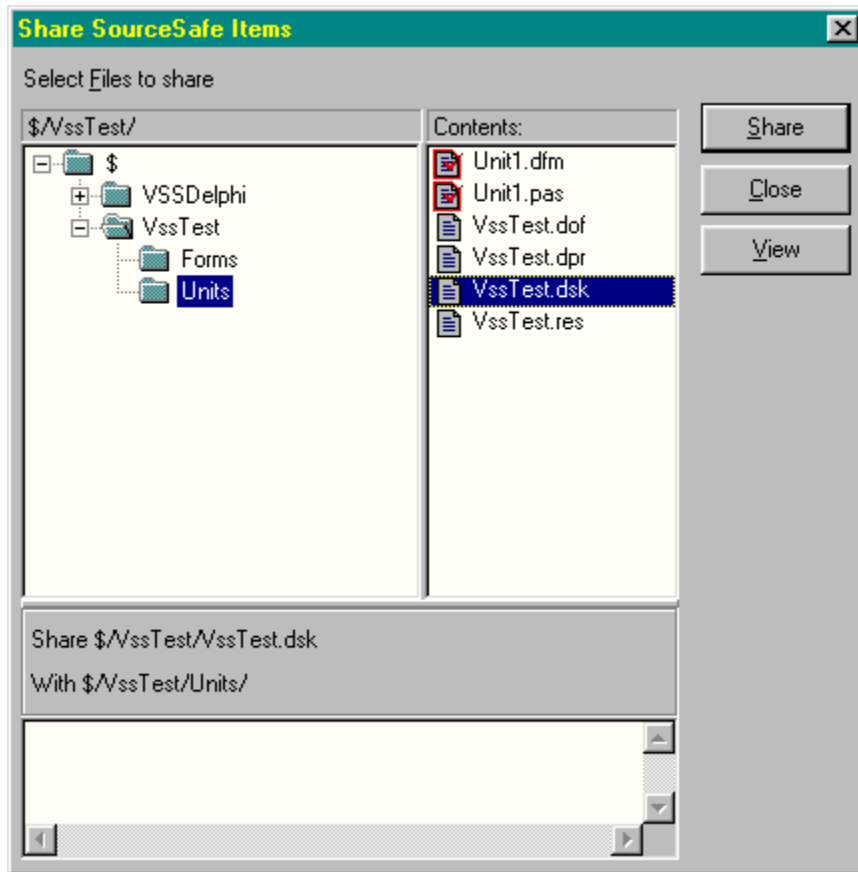
Other - Allows you to select files from other projects.

If you remove all the files in a project from SourceSafe, You will see this dialog:



If you want to remove the project from source control click 'Yes'. If you still want the project to remain in SourceSafe but to contain no files, click 'No'.

## Share From SourceSafe



Share Files or Projects between different projects. Use this when you want a file to be shared between to projects. There will be actually only one version of the file, but it will appear to be in two (or more) projects.

Share - Share the selected file with the current project.

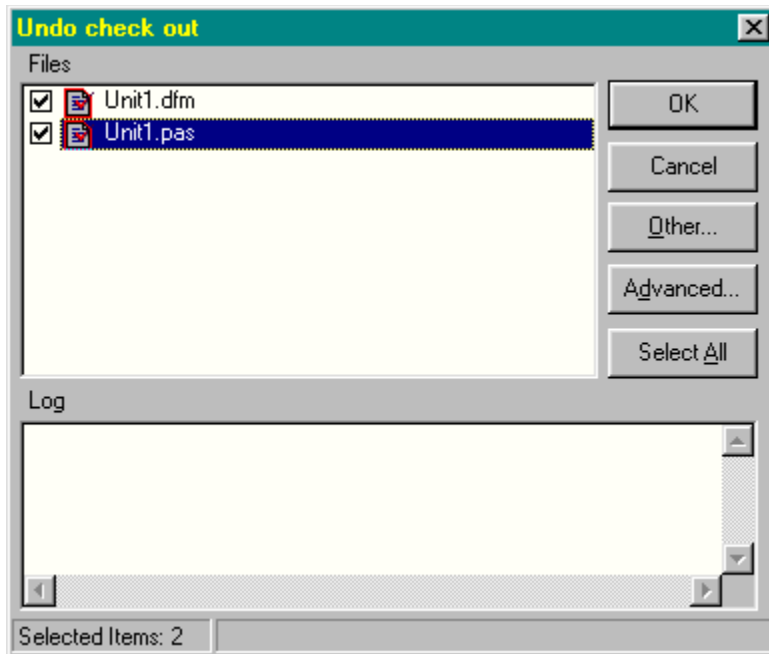
View - View the selected file.

Notes: You can also share files by dragging a file from one project to another. You can also drag projects.

The 'Share' and 'With' labels will automatically show which file will be shared in which project.



## Undo Check Out



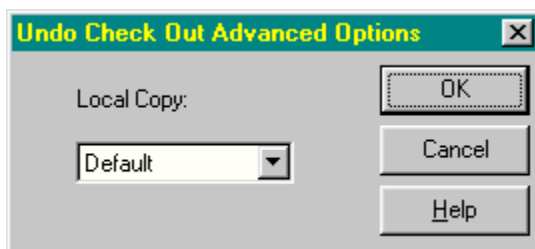
Undo check out of a file. Use this when you want to discard the changes you made to a file after you checked it out.

Ok - Undo check out of the selected files.

Other - Allows you to select files from other projects.

Log - Results of the current operation.

### Advanced



Local Copy - Select what to do with the local copy of the file.



The VssDelphi IDE menu contains these items:

**Get Latest Version**

**Check Out**

**Check In**

**Undo Check Out**

**Add to Source Control**

**Remove From Source Control**

**Show History**

**Show Differences**

**Project Explorer**

**Share From SourceSafe**

**Execute SourceSafe**

**Options**

**Help**

**About**

## **INTRODUCTION**

VssDelphi is an integration of Microsoft's Visual SourceSafe Into Borland's Delphi IDE. It makes your life easier by letting you access the most popular SourceSafe actions from a menu inside Delphi's IDE.

Requirements: Delphi 3.0, Visual SourceSafe 5.0 .

### **License**

This program is shareware. You can use it for evaluation purpose only. If you want to use it on a regular basis, you must register it.

### **Registering Vssdelphi**

You can now register VssDelphi through ShareIt ([www.shareit.com](http://www.shareit.com)). ShareIt gives you the opportunity to register VssDelphi in almost any way you like. Just go to this page: [www.shareit.com/programs/101214.htm](http://www.shareit.com/programs/101214.htm) , and choose 'Register'.

### **Contact**

To submit bugs, suggestions or questions, please e-mail me.  
Eyal Post - [eyal@ladpc.gov.il](mailto:eyal@ladpc.gov.il)

### **Copyright**

(c) 1997-1998 All rights are reserved to Eyal Post.

**EPocalypse VssDelphi 1.2**

*An Integration of Microsoft's visual Source Safe into Borland's Delphi 3.0*

