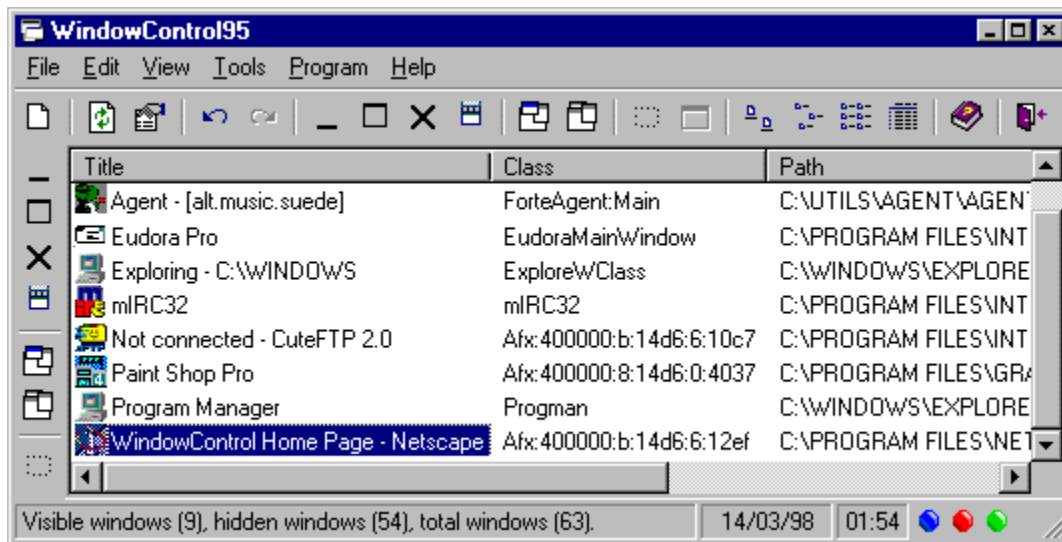


WindowControl95 version 1.61



WindowControl is a desktop window manager for Windows 95. WindowControl lets you control your windows either by hand, or automatically, using AutoPlace. WindowControl started as just a way in which to move windows on the screen, but as further releases went by, it has grown far more powerful than that. In addition to being able to move, resize, minimise, maximise, centre, close, hide/show, top and untop windows you can also use WindowControl's more advanced features to ease using Windows 95.

More advanced features that give control over multiple windows are:-

Minimise All/Undo Minimise All - Faster and more powerful than the Windows95 built in command

Hide All/Undo Hide All - Hide away programs until you need them again

AutoFit - Make sure all windows fit on the screen and aren't hidden of the edges.

AutoPlace - Carry out any of the standard features automatically on as many windows as you like.

WindowControl History

Version 1.61 - 29th March 1998

- * Improved efficiency. Now uses between 2 and 3 times less CPU time. (Refreshing the window list is also much faster because of this).
- * Registered users can disable the splash screen for security reasons.
- * Improved the way the program runs from the tray.

Version 1.60 - 15th March 1998

- * Added the Sidebar to quickly carry out operations on picked desktop windows.
- * WindowControl now has a 'flat' toolbar if your version of COMCTL32.DLL is greater than 4.70.
- * ...and of course fixed a couple of tiny bugs.

Version 1.51 - 28th February 1998

- * Added ability to automatically close a window or class using AutoPlace.
- * Minor bug fixes.

Version 1.50 - 16th February 1998

- * First fully 32-bit Windows 95 specific version.
- * Windows 95 Explorer like interface, toolbar, statusbar, minimise to tray and other standard Windows 95 benefits.
- * AutoFit - windows automatically moved and resized to fit into the desktop.
- * Shutdown section now includes 'log on as new user' and 'Exit to DOS'.
- * Hide the Taskbar, hide the desktop, start your screen saver with one click.
- * This help file to make things even easier. :-)
- * New Statusbar shows current window count, time and also can be used to quickly enable and disable AutoUpdate, AutoPlace and AutoFit
- * Many other enhancements, just use the program and you'll see all the benefits!

Version 1.45 - 23th December 1997

- * Now works with fuzzy window titles. This means you can have titles like '* - Netscape', or "Microsoft Word - *" and it will find all windows that match these wild-card searches.
- * Improved functionality when using AutoPlace means normalised windows can be set so that only specific attributes are modified. This allows for windows to always be a certain size, but not be moved on the screen, or vice-versa.

Version 1.4 - 12th November 1997

- * You can now undo the last command. You can undo hiding a window, renaming a window, or maximising or minimising a window.
- * A new command, Hide All has been added.
- * You can set certain windows to be unaffected by Hide All and Minimise All.
- * You can view and restore windows that have been hidden using AutoHide.
- * Restore now sets a window to its previous state, not just it's normal state.
- * You can specify the interval for AutoHide.

- * You can centre windows.
- * Improved preferences dialog with more options.
- * Minimise All is faster.

Version 1.3 - 25th October 1997

- * Can shutdown windows, restart windows, or restart your PC.
- * Improved interface (added a menu) to more quickly access WindowControl's features.
- * Added shortcut keys.
- * Save a program's icon to a bitmap.
- * Copy a program's class, title, path or handle.
- * When you change the name of a program, it keeps the focus.
- * Restore AutoHide during program running, not just on exit.

Version 1.2 - 12th October 1997

- * Wizard for adding new windows or classes
- * Quick picker when shrunk
- * You can start shrunken to save space
- * Can now shrink to the right hand side of the screen
- * AutoPlace list is now sorted

Version 1.1 - 25th September 1997

- * Can choose which windows to restore when exiting.
- * Now can AutoHide multiple windows with the same caption, and then restore them.
- * Ability to shrink main window to save space.

Version 1.0 - 17th September 1997


- * Initial release.

WindowControl95 Features

Standard Features

These are features that can be carried out on windows from the main screen.

Move and Resize

This only works on visible windows. Select a window from the list, and then press the Properties button () on the toolbar, or shift-click with the mouse.

This brings up a dialog box with the windows current size and position. Either by typing in new values, or using the slider bar, you can reposition and resize the window.



Topping

This places any window on top of any other non-topmost windows. This means that it is always visible and never covered by any other windows.



Centre

To quickly centre any window on the desktop choose this command.



Minimise, Maximise, Close

The standard Windows commands to minimise, maximise and close a program. This just makes things much easier, because you don't have to go into the program itself to carry out these commands.



Hiding and Showing Windows

Hiding a window will remove it from the screen. You won't be able to ALT-TAB to it, and it won't be in the Taskbar either. This is useful for some programs that you need running all the time, but don't want in the way. Things like the Windows Connected To... dialog when you're connected to the Internet. To show these windows again (or any other hidden window) press F7 which will show you the list of hidden windows, and double click or choose restore to make the window visible again.

WindowControl95 Features

AutoPlace

With AutoPlace, you can automatically move, resize, close, hide or top any window or windows. You can do this both for specific window titles, or all windows of a certain class. You can also automatically minimise or maximise windows as well.

This is both a very handy and very powerful tool. It can be set up so that your programs always appear on the same position on your desktop and as the same size. It can be set so that certain programs are always on top (very handy when talking to someone on IRC and browsing the internet at the same time). Windows can be automatically tiled so when working on a large project you can see all the programs you want on the screen at the same time. there is no limit to the uses you can put AutoPlace to once you set it up!

Goto the [AutoPlace Preferences](#) section for more details on how to use AutoPlace.

WindowControl95 Features

AutoFit

AutoFit checks the desktop at a user specified interval of time to see if any windows are placed off the screen. If it finds any windows that are not 100% visible, it will move them onto the screen. If any window is too large to fit onto the screen then it will automatically be shrunk so that it fits.

The only windows that are not affected by this are any that are in AutoPlace. This means if for some reason you want a window to be partially off-screen, you can set it in AutoPlace for this, and AutoFit will not try to fix it's position.

AutoFit can also detect the position and size of the Windows 95/NT start bar and compensate for it as well. By pressing the 'Get Taskbar Position' button from the AutoFit preferences section, WindowControl puts the Taskbar size and position into the preferences for you. Then, whenever a AutoFit is carried out, it will not only make sure all of a window is on the screen, but will also make sure that it is not obscured by the Taskbar.

WindowControl95 Features

Minimise And Hide All

Minimise All

Frequently in Windows, you have lots of programs running and you want to get to an icon on your desktop. Selecting Minimise All will minimise all windows faster than the Windows 95/NT standard command, giving you access to your desktop.

Hide All

This works in the same fashion as Minimise All, but instead of minimise all your windows, it hides them from the screen entirely. This can be handy if you are working on different projects and you want to have a lot of programs running, but don't want to access them all at the same time. You can quickly hide everything, then go into the Invisible window list and just restore the few programs you want.

This is however slightly cumbersome. To make this feature far more powerful you can specify in the preferences section certain windows, or window classes that will not be hidden by the hide all command. (You can also set up minimise all to not minimise certain windows as well).

Adding a window to the Minimise or Hide All lists is the same as it is for adding an entry to AutoPlace. Drag and drop from the main window list, or type in the name in the text box, and press enter. You can then edit as normal and switch from title to class.

Also check the Tools preferences section for more on how to do this.

Customising WindowControl

General Preferences

Here you change the way that AutoUpdate and AutoPlace function.

AutoUpdate

You can disable AutoUpdate. Doing this means that you will have to manually refresh the window list and that AutoFit and AutoPlace will not find new windows unless you refresh the list.

You also can set the interval at which AutoUpdate checks for new windows. This figure is in milliseconds, so the figure of 1000 is 1 second. The default for this is 1000.

AutoPlace

Disabling AutoPlace means that none of your AutoPlace entries will not be checked for. It is frequently better to disable either AutoHide or AutoTop instead.

Here you can also set the interval for AutoPlace to check for windows to place. Again the default value is 1000. (There is little point setting this value lower than AutoUpdate).

Display Icons

This turns off showing the icons in the main window list in WindowControl. It doesn't work properly until you restart the program however. This makes WindowControl run slightly faster and use less resources.

Customising WindowControl

Position Preferences

Here you change some WindowControl properties.

Always on top

Setting this means that WindowControl will always be placed on top of any other windows. (If you top windows with WindowControl however, they will be placed on top of WindowControl. To make WindowControl ontop of them again, just go into the preferences and press OK or Apply).

Remember Size and Position

If you have remember size on, then WindowControl will always be the same size when it runs from the last time it was run. Also the window list columns will be the same size as well.

Remembering position means it will always load the main window on the same place on the screen.

(We recommend you check both these values)

Start Position

This allows you to start WindowControl in one of 3 ways.

Normal - Shows the main window on load.

Shrunken - as a box in the corner of the screen. You can specify which corner.

Tray - WindowControl appears as an icon in the Tray bar.

Minimise to tray means that when you minimise WindowControl, instead of appearing on the Taskbar, it appears in the tray.

Customising WindowControl

Tools Preferences

Here you change the way that Minimise and Hide All function.

Adding entries

Select from the check boxes at the bottom of the screen whether you want to edit Minimise All or Hide All.

Like with AutoPlace, type an entry in the text box, or drag and drop a window from the main window list. You can make the entry a Title or a Class quickly from the drop-down. To remove an entry, select it and press Delete.

All the entries in these two lists will now not be minimised or hidden whenever you choose the Minimise or Hide All commands respectively.

Note: You should add "Program Manager"(Title) or "Progman"(Class) to this list as it cannot be minimised or hidden, and will make the functioning if these commands better.

Customising WindowControl

AutoPlace Preferences

This displays a list of all the AutoPlace entries you have, and let's you add new entries and edit old entries.

Adding a Window to AutoPlace

You can either use the Window Control Wizard or manually add entries to the AutoPlace list. The wizard is more intuitive, however some people might find the old way quicker to add entries, so you can choose not to use the wizard if you want.

There are two ways of adding items manually..

Select a entry from the window list and drag and drop that entry onto the AutoPlace list in the Preferences dialog. This adds the window and it's current position to the list.

Alternatively, just type in the name of the window in the text box above the AutoPlace list, and press the Shift+Enter keys. This adds the window, but you will have to then specify the positions manually.

Working with AutoPlace

Once you've added your Windows and Classes, you'll want to manipulate them. If you just want a window to be placed in a part of the screen at a certain size, then all you have to do is change the top and left fields for the position, and the width and height fields for the size. If instead you want the window to be automatically Minimised, Maximised or Closed, choose them instead of Normal. If AutoPlace is switched on in the General section and this window title exists, then the changes will be carried out as you work so that you can instantly tell if you are happy with your settings.

If you leave any of Left, Top, Width and Height as blank values, then only the non-blank values will be altered. This means you can make sure a window is always in a certain position, but not alter it's size. Or, alternatively, always a certain size, but will appear wherever Windows decides to open it. Or further, a window can be a certain width or height or whichever of these values you wish.

To Hide or Top a window, all you do is select the option from the lists as well. You cannot top a Class though, because that would be too dangerous! Also be careful if you have a window set to be maximised, as if you top it as well, you won't be able to get to any other windows until you close it.

Window Control prioritises Window Titles before Classes. For example if you have "Untitled - Notepad"(title) and "Notepad" (class) as your entries. Then, if "Untitled - Notepad" is set to Maximise the window, and "Notepad" is set to position the window to a set size and position, then when you open Untitled - Notepad, it will always maximise, and ignore the settings for Notepad as a Class.

If you set a entry to be closed when found by AutoPlace, then all other options will be disabled. (There is no point moving a window if it is going to be closed!).

Editing your Entries

If you want to edit your title, or make an entry a class, then it is simple to edit it. To change from Title to Class all you do is change the drop-down box in the bottom left corner of the screen to the value you want. Of course you still have to change to the

class name as well. To alter this (or change any caption) select the entry to wish to alter and type in the new caption in the text box at the top of the screen and press the Enter key to save any changes.

Removing AutoPlace Entries

To remove an entry, select it from the list, then press the Delete key.

Customising WindowControl

AutoFit Preferences

Here you change the way that AutoFit functions.

The first option disables and enables Autofit. If you enable AutoFit, it automatically enables AutoUpdate as well because it will only check for windows when AutoUpdate is enabled.

For people who have their Taskbar on always on top, then you can set up Autofit so that windows don't get hidden under the taskbar, which is frequently a nuisance, especially for people like myself who have the Taskbar at the top of the screen and can therefore often not get to a programs title bar.

Pressing the Get Taskbar Position button finds out where your taskbar is on the screen and it's size and enters those values in the requisite boxes. Now whenever AutoFit finds a window hidden under the Taskbar as well as off the desktop it will move it onto the desktop, and if necessary resize it to fit the desktop as well.

AutoPlace Wizard

The WindowControl wizard is an intuitive guide for adding new AutoPlace entries.

In a few quick steps you can add a new entry to the AutoPlace list.

Step 1: Choose a window to add

From the drop down choose a currently running program or type in the name of a new window.

Step 2: Class or Title

Select whether your new entry should be a class or a title. If you select a class and you chose an entry from the drop down, then the class name will automatically replace the title.

Step 3: Top, Size and Visibility

Quickly choose whether the entry should be Topped or not. Made to be hidden or left alone and finally whether it should be resized to be minimised, maximised or untouched.

Step 4: Size and shape

If your entry is to be minimised or maximised or hidden, then you can skip this section and press finish to add the new entry.

Otherwise, you can move enter here values for the new position and size of your entry.

Finish

You will then be shown a summary of what your new entry is to be. If you are happy with it, then press Finish, otherwise go back and alter any of the values.

Support for WindowControl95

Although WindowControl is a shareware program, I will try to provide support for non-registered users if I feel they do not abuse my trust. i.e. If it seems that they are genuinely unsure of a feature of WindowControl and that is preventing them from trying out the program within the 30 day trial period.

Registered users however will get my upmost attention and I will endeavor to help them out with any problems they may encounter as soon as I can.

All support issues should be emailed to the usual address, WindowControl@USA.NET with the word SUPPORT as the subject line.

NOTE: Although fully 32-bit, WindowControl95 does not run on WindowsNT 4. This is because it uses features specific to Windows 95, that Microsoft left out of NT 4. There should be a version of WindowControl for NT 4 available soon. You can however run the Windows 3.1 version of WindowControl without any difficulties on Windows NT 3.51 and Windows NT 4.0.

Registering Window Control

WindowControl is not unique, but I think it is the best program out there for manipulating windows. Therefore, I don't think I'm being unfair asking for £10(UK) or \$20(US) for this program. WindowControl has no disabled features, so I'm relying on your good natures to register this program.

Benefits of Registering

If you register, I'll notify you of any updates to WindowControl.

Put your suggestions at the top of the ToDo list.

You will get any future upgrades to WindowControl 1 for free.

The nag screen and 5 second delay when you load the program will be removed.

You might even feel better at helping out a poor programmer, but I guess that might be stretching reality too far.

How to Register

To register, send a cheque, postal order or bankers draft (or cash if you want to take the risk) for £10 (UK) or \$20 (US) for each copy of WindowControl made payable to Harry Cohen at the following address.

Harry Cohen

73 Milverton Road

Giffnock

Glasgow G46 7LQ

Scotland

UK

Include your email address so that I can send you your registered version of WindowControl, and can add you to the list of registered users so that I can inform you of upgrades to Window Control.

If you want to contact me about alternative methods of payment, or site licenses then email me to WindowControl@USA.NET

Quick Tips

WindowControl was designed for two main purposes although it can of course be used for whatever you want. I wrote WindowControl to help me when I was using the Internet, and when I am programming.

It was designed primarily as a tool to control windows when using the Internet, and when programming. Standard uses for WindowControl are therefore,

- * Hiding the "Connected To.." dialog box when logged onto the Internet.
- * Hiding all DCC file transfers on IRC.
- * Having file downloads placed on top, so that you can talk on IRC and also monitor your downloading at the same time.
- * Automatically maximising Notepad so that you have a full screen to work with.
- * Tilling two frequently used files side by side each time they run.
- * Changing your browsers window to a standard window size (e.g. 640*480, 800*600) for testing out your HTML.

Obviously there are many other uses for WindowControl and these are just some of the things it can be used for.

Window Classes are properties of every program. Most windows programs have a class name. For instance every time you run MicroSoft Word, no matter what file you open in it, it's class name is **OpusApp**. MicroSoft Notepad's class is simply **Notepad**.

AutoHide is the part of AutoPlace that automatically hides windows. Disabling this means that no windows will be hidden even if AutoPlace is active.

AutoTop is the part of AutoPlace that places windows always-on-top. Doing this means that windows are still positioned and resized with AutoPlace, but will not be topped. This disables topping for ALL entries.

Shrink mode shows WindowControl as a small icon in the corner of the screen. Right clicking on this icon shows the list of currently running windows for quick access. This is handy when using WindowControl as a task manager. You should have WindowControl always on top when using it in this way.

The visible screen. For instance, if you have your monitor set to 640*480 pixels, then that is the size of your desktop. Anything outside that is considered outwith the desktop, and will be placed inside this region.

This area of the main screen shows all the currently running windows. Depending on your current view this will be either all Visible, Hidden or automatically hidden windows. It shows the icon associated with each program, it's Window's handle, it's class (useful for adding AutoPlace entries) and it's path.

The WindowControl toolbar provides quick access to the main features, such as, topping, minimise, maximise, hiding and showing windows.

The status bar shows the number of currently running windows.

The dots on the right hand side of the status bar show the current status of the automatic functions.

The first circle will be blue if AutoUpdate is enabled.

The second circle will be red if AutoPlace is enabled.

The third circle will be green if Autofit is enabled.

You can double click on these circles to quickly enable and disable these functions. The circles appear empty when these functions are disabled.

The Sidebar lets you quickly pick any window on the desktop and carry out a standard operation on it. Operations that are available are minimise, maximise, close, centre, top, untop and hide.

The columns above the Window List can be selected to sort the current entries.

WindowControl Menus

The File Menu

File menu commands that have a toolbar button have their buttons displayed beside them.



New...

This opens the WindowControl Wizard which helps in creating new AutoPlace entries.

Save Icon...

When enabled (selected an item from the list of open windows) this allows you to save the associated icon of that program as a Windows BMP file.

Run...

This brings up a dialog so that you can quickly run any program, folder or, shortcut.



Properties

This displays the properties box for the selected window. This allows you to quickly move a window if it is a visible window.



Refresh

This updates the window list to show the currently running processes. Useful is you have AutoUpdate turned off, or at a high setting and want to update the list quickly.



Exit

This shuts down WindowControl. Why would you want to do that? :-)

WindowControl Menus

The Edit Menu



Undo/Redo

This will undo or redo the last command. For example if you renamed a window, you could undo that change, or if you maximised a normal window, you could restore it to it's normal state.

Copy Commands

Copies the Title, Class, Path or Handle of a program window to the clipboard.

It is frequently useful to copy a program's title or handle to the clipboard when adding new AutoPlace entries.

WindowControl Menus

The View Menu

Toolbar and Statusbar

Check/Uncheck these to view/hide the toolbar or Statusbar.



Change Views

This changes the default view within WindowControl. The default value is Details where you can see all the information about programs.

Arrange Icons

Sort Icons to either Title, Path, Handle or Class. Most useful when not in Details view.

Line Up Icons

Aligns the icons of the running processes.

Shrink

Shrinks the window to a small box in a user specified corner of the screen. This is left-over from the Windows 3.1x version where it was not possible to minimise to the tray, and you wanted to still have quick access to WindowControl. It is still useful as it brings up a list of currently running programs without showing the main window.

Visible/Invisible

Toggles between showing invisible and visible program windows.

AutoHide List

This displays all windows that have been automatically hidden using AutoHide.

Options...

Change the settings for WindowControl. Look at the Customising WindowControl section for more details of this.

WindowControl Menus

The Tools Menu

File menu commands that have a toolbar button have their buttons displayed beside them.

Minimise All/Hide All

Quickly minimises or hides all program windows, or restores them again.

Shutdown Commands

Standard Windows 95 shutdown commands only one click away.

Miscellaneous Tools



Shows the Windows 95 Start Bar.

Screen saver

Instantly runs your Windows 95 screen saver. (Does nothing if you don't have a screen saver configured).

Hide Taskbar

Hide the Windows 95 Taskbar.

Hide Desktop

Hides all Desktop icons.

WindowControl Menus

The Program Menu

File menu commands that have a toolbar button have their buttons displayed beside them.



On Top/At Bottom

Topping a window places it at the top of the Windows Desktop and above all other windows. This means it will always be on top of any other non-topped windows, and will therefore always be visible. To remove this property from a window, you untop it with the 'At Bottom' command, which places the window at the bottom of the Desktop chain (i.e. the end of the ALT-TAB list) and removes it's topmost attribute.

Set Focus

Gives the currently selected window the focus, and brings it to the front of the Desktop.



Restore/Hide

Either hides a visible window (removes it from the Desktop, ALT-TAB chain and Taskbar) or brings back a hidden window.



Centre

Centres the selected window on the screen.



Minimise/Maximise

Simply and quickly minimises or maximises the selected window.



Close

Shuts down the selected window or process.(NOTE: when doing this to a hidden window, beware this could cause consequences beyond just closing this one window).

WindowControl Menus

The Help Menu

File menu commands that have a toolbar button have their buttons displayed beside them.

Contents

Displays this help file.

About

Shows the current version of WindowControl and displays system information.

Register

Enter your registration details here to register WindowControl.

