



Introduction

PowerBar for Win95/NT4.0



Copyright 1998 [PLEMSOFT](http://www.plemsoft.com) www.plemsoft.com
Thanks for trying PowerBar

[New in this release](#)

Setup options

[Options](#) *New*

[Virtual Desktop](#) *New*

[Add special items](#) *New*

[Position and Size](#) *New*

[Internet access and mail](#) *New*

[Hotkeys](#) *New*

[Application order](#) *New*

[Features1](#) *New*

[Features2](#) *New*

General

[Paster](#) *New*

[Item Settings](#) *New*

[Internet and Mail menu](#) *New*

[What is PowerBar](#)

[Virtual Desktops](#)

[Instalation](#)

[Tray Support](#)

[Un-Install](#)

[Screen Capture](#)

[Clipboard Enhancer](#)

[Feedback](#)

[Screen Saver](#)

[Registration](#)

[Main Menu](#)

[Registration Form](#)

[Tips](#)

PLEASE READ

Use this program at your own risk. This program is provided as is, which means that the author can't be held responsible for any damage that this program may cause. If you do not agree with this, you are required to remove the PowerBar archive, and all it's contents, from your machine.



PLEMSOFT is a Danish software house specialized on solutions to make it easy to use windows95 / NT4.0 , with our PowerBar software you will not only work faster , you are able to navigate and start your applications with a single click!. we hope you enjoy using PowerBar.

www.plemsoft.com



Clipboard

PowerBar Clipboard enhancer will capture and remember the last 20 text copy's , and the last 20 bitmap copy's. Each time you make a copy of a bitmap or some text , it will be saved on your harddisk, this means that all your clipboard copies will be remembered even if you reboot your computer. PowerBar will make a clipboard text history , and a clipboard bitmap history. if you right click powerbar you will see a submenu called 'Clipboard' , when you choice this a popup menu will show with 2 submenus :

Text history.

This menu will popup with the last 20 text copies you have made , it will show you the first 80 chars of the clipboard text , all special chars are not show but instead it will show a '.'.

When you select one of these text entries , the old original clipboard contents will be restored.

Bitmap history.

This menu will popup with the last 20 bitmap copies you have made , it will show the bitmaps as small 80x80 pictures , if the bitmaps are smaller then 80x80 it will center them and show them in there real size. This also means that large pictures 1024x768 will not look very nice in the popup menu.

When you select one of these bitmap entries , the old original clipboard contents will be restored.



PowerBar has a very powerful tray support , the tray support are made to make you quickly access the PowerBar main menu , and have quick access to special items.

Here are a list of some of the special items you are able to include in the tray :

1. Dialup-Network
2. Network neighborhood
3. My computer
4. Control panel
5. Recycle bin
6. Inbox
7. All desktop items
8. Internet explorer
9. Netscape
10. And many others.

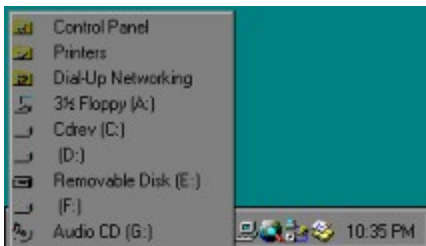
You can include all objects you can place on the desktop directly or as shortcuts.

Its possible to have them on PowerBar and in the tray at the same time.

Or save some space in PowerBar and only have them in the tray.

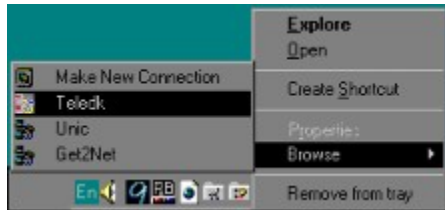


To put a special item in the tray you first need to add the special item to PowerBar , you do this from the setup dialog 'Add special items' , when you have the special item on PowerBar just right click on the icon that you want in the tray , you are now able to choice 'Add to tray' or 'Move to tray' , if you only want the item to be in the tray then choice 'Move to tray' , if you want the item to both be in PowerBar and the tray then choice 'Add to tray'.



When you left click a item in the tray , it will launch the application or if its a object with subitems it will

show the browse popup menu or start explorer , you are able to configure this from the setup dialog, (Features2,Folder click).



When you right click a item in the tray , you will get the objects context menu , and the browse submenu (you need to enable the browse menu from the setup dialog) , you also have the option to remove the object from the tray.



WHAT IS POWERBAR

PowerBar is an add-on utility program for WIN95/NT4.0 that allows fast and easy 1 click access to your applications and programs groups, but PowerBar has MANY other features.

Here are some:

1. Instant drive access, 1 click drive access to all your drives Show free disk space with ToolTips.
2. Virtual Desktop's up to 18. switching desktop's are very fast.
3. Screen saver control , functions like instant Disable/Enable , Disable for 1-2-4 hours , screen saver will become active after the time has elapsed.
4. Multimedia player , support CD-ROM - wave files - midi files. Random play , Random switch between CD-ROM and playlist, Load and Save playlist.
5. Drag/Drop support drag your favorite application - multimedia files - documents - programs groups - games , or whatever you want to access fast.
6. Dialup Network Support (Internet access / Ras / Lan)
7. Email support , Check / Peek / Send.
8. Multiuser aware. Evry user has its own configuration.
9. Digital clock , with or without date.
10. Hotkeys.
11. Paster.
12. Launch scheduler,run evry 2-5-10-20-30 min,or 1-2-4-8 hour. Launch as minimized-maximized-normal. Connect to default Dialup network connection before launch. Close default Dialup network connection when program close.
13. When you drop a file/folder on a item on the toolbar the item is executed with the dropped file/folder as parameters, this means that if you have notepad or another text editor , you can drag/drop any file from explorer for editing.
14. Shutdown computer. , Restart computer.
15. Multipl columns , allow you to set single icons as full size and other as small in multipl columns ,

separators splits columns.

16. Analog Clock , shows the full date and time with ToolTips.

17. Quick resolution change , allows permanent and non permanent changes. No need to reboot in most cases.

18. Real-time memory monitor shows free physical memory , with ToolTips you can see the size off the swapfile and other details.

19. You can customize PowerBars look , set it up to show your own bitmaps in the background , or show a color effect , or just use the default system colors. it can have a bevel in border , bevel out border , or no border.

20. PowerBar can be any size , it will automatic zoom all items to fit the size you prefer , if you resize it PowerBar find's the best looking icon to show.

21. PowerBar can dock to any border of the screen , justifying the desktop viewing area , and fit in just like it was part of the operating system.

22. PowerBar has the new IE look and fell.

23. All PowerBars objects has ToolTips, that shows more details off the object.

24. Shortcut menus on all objects including shell's shortcut menus like properties, eject, autoplay, find, explore, open etc.

25. Add up to 50 items in the registered version. 16 items in the evaluation version.

26. Executing of shell objects , this means that you can startup Control Panel items like Add/Remove program , and other shell objects like this. read tips.txt to find out how to include shell objects.

27. Arrange desktop object , top - bottom - align - hide desktop items.

28. Setup options for all items. Like startup folder, parameters, ToolTips.

29. Autohide etc.

30. And many other features.



INSTALLATION

This is only if you received PowerBar in a zip file.

If you received PowerBar as a exe file , just run this exe file and follow the setup instructions on screen.

- A. Create a new directory for PowerBar, and copy all files contained within this archive to this new directory.
- B. Create a Windows 95/NT 4.0 link from any program group folder to POWERBAR.EXE, located in the directory that you created in step A.
- C. Copy this link to your Startup folder if you would like PowerBar to startup automatically when you boot Windows 95.



UN-INSTALL

This is only if you received PowerBar in a zip file.

If you received PowerBar as a exe file , got the Add/Remove programs and select uninstall PowerBar , follow the uninstall instructions on screen.

- A. Remove the directory where you installed PowerBar in step A of the [installation](#) instructions.
- B. Remove all links to POWERBAR.EXE.



FEEDBACK

You are welcome to contact the authors for suggestions and comments. In fact, if you choose not to use this software or register because you have problems with it, we want to hear about it. Write a letter to one of the following addresses.

E-mail:

plemsoft@plemsoft.com

prebene@post6.tele.dk

Homepage:

<http://www.plemsoft.com>

slow-mail:

PLEM

Holmebaekhuse 18

DK-4681 Herfølge

Denmark



REGISTRATION

PowerBar is SHAREWARE.

read sharewre.txt if you want to know about the concept Shareware.

For online internet registration

<https://www.regnow.com/softsell/nph-softsell.cgi?item=1043-1>

After you make your online registration you will receive the full version in your email.

Online registration \$20.

Cash mail orders

To register PowerBar , Send cash in your own currency (no coins) for a value of US\$20.

When we receive your payment , you will receive the registered version of PowerBar. This version will not have the startup screen and other limits, it includes many new backgrounds, and all functions added since the time of releasing the evaluation version.

NOTE: for check (cheque) orders , you need to add \$5.

If you want to make more then 5 registrations please email us for a offer.

If you send your order with priority mail we have it within 48 hours.

If you have any problems with the payment , or the program , or anything else please read the [FEEDBACK](#) section.

SPECIAL OFFER

If you want to receive the registered version in your EMAIL, you will save US\$5. and receive the registered version even faster. **This offer is only for cash mail orders.**

Sample registrations:

USA registration:

EMAIL: Registration 15,- US\$.

DISK: Registration 25,- US\$.

Germany registration:

EMAIL: Registration 30,- DM.

DISK: Registration 40,- DM.

Danish registration:

EMAIL: Registrering 100 kr. , Den fulde version af PowerBar sendes til din EMAIL address.
DISKETTE: Registrering 150 kr. , Den fulde version af PowerBar sendes paa diskette.

Print and fill out the [registration form](#)

Online Registrations:

<https://www.regnow.com/softsell/nph-softsell.cgi?item=1043-1>



TIPS

Make PowerBar total transparent, if you choose the same background bitmap as the background, and set border's to none. it will look like PowerBar items is sitting on the background. This only works if you have PowerBar located at the top or the left corner.

If you check 'Enable browse menu on all items with sub items', and right click a drive icon or a folder , you get a browse submenu , where you are able to see the content of the folder.

If you right click a Special item like 'Control Panel' you are able to move or add the icon to the tray.

All items you make on the desktop you are able to add from the 'Add special items' dialog box.

You can add shell objects directly from the setup dialog , if a shell object you want is not there you are able to use it anyway. Create a dummy folder , and create a shortcut to the shell object , you are able to drag the shortcut to the toolbar. From version 1.10 PowerBar is able to launch shell objects.

If you drag a shortcut to PowerBar, and later delete that shortcut, then PowerBar is not able to find your shortcut and it will not be able to execute the program , before deleting the shortcut , choose 'Resolve Shortcut' in PowerBar this will make the program point to the original and not the shortcut.

If you drag a file to a PowerBar item , it will launch the item with the dropped object as parameters , so you can drag/drop a document/text/multimedia file directly to your applications in PowerBar.

When you have an application running in a virtual desktop , the icon is marked with red.

You can place PowerBar in the title area like you can with the office pro , just go into the setup dialog in PowerBar and choose 'Enable PowerBar to be anywhere' , you are now able to resize , and place PowerBar in the title area.

Do your mouse pointer flash each second , then change to the default windows mouse pointer, or turn the analog clock off.

Disable your screen saver when you are doing large jobs , like defragmenting your harddisk or rendering pictures , there are nothing as annoying as a screen saver swapping memory to disk and forcing the defrag to start over , or a screen saver taking all the CPU cycles when you need them for rendering a picture.

Before doing a large job just right click PowerBar and click 'Disable screen saver', when the job are over just right click PowerBar and click 'Enable screen saver'.

Drag/Drop all your favorite sound files to the Multimedia drop target , and save them in a playlist 'Save current playlist' , you now has instant access to all your favorite sound files , just right click the multimedia drop target.

Left click the multimedia icon to play the next song in the playlist-cdrom.



Virtual Desktop

PowerBars virtual desktop feature, lets you group related programs on a particular desktop and switch to them only when they're needed. This lets you run a greater number of applications without cluttering the taskbar with a large number of unreadable entries.

Virtual desktops also gives you more privacy by letting you quickly switch to another desktop if you are doing something other people should not see.

A virtual desktop is showed as a small icon , the current desktop has the color blue , a desktop with running application have the color red , and empty desktops are cyan.

To switch to a new virtual desktop is as simple as to left click on the desktop you want to activate , you see when you left click a virtual desktop it will switch to that desktop and the color of the icon will switch to blue (current desktop). Try to switch to a desktop and start a application , then switch to another desktop and back again , your application will come back just as you left it. you are now already using virtual desktops. When you get used to using virtual desktops you will find that you are working faster and you are able to organize your applications in a way that make you switch from one application to another faster and more easy.



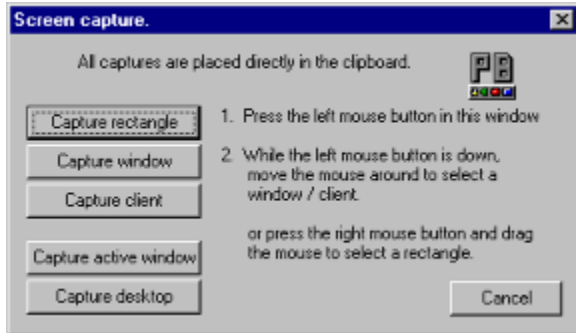
As you see you are able to see what programs are running in the virtual desktop it will popup with a ToolTip. The '[1]' is saying that there are 1 running application , the caption of that application is 'Calculator'.

In the setup dialog you have the option to specify how many virtual desktops you want.



Screen Capture

PowerBar includes a screen capture function , No need to search for a screen capture program when you just need to capture a window a icon or other graphics , its built into PowerBar so its there when you need it.



Screen capture is very useful when you want to include contents from another application in your own documents , you are able to capture whatever is on your screen , this means that you can include a page from a website , or a piece of graphics from the internet , the filelist from explorer, or anything from another application.

When you see what you want to capture on the screen , you just start PowerBar screen capture and choose the best way to capture your image.

You are able to capture the following ways :

Capture rectangle

Used to capture a user defined area directly from the screen.

Capture window

Used to capture all the contents of a application window.

Capture client

Used to capture all the contents of a client area of a application windows , this includes listboxes , buttons , toolbars , graphics windows , or whatever client windows there exist.

Capture active window

Used to capture the currently active window.

Capture desktop

Used to capture the whole contents of the desktop.

When you press the button that best suits you need to capture , a text explaining how to continue the capture will appear on the left side of the buttons.

When you are finish doing the capture , the result will be placed directly in the clipboard , so you are able to directly paste it into your favorite applications , if you like to save the result in a file , you need to start 'Paint' and paste it , then save it.



Screen Saver

PowerBars screen saver support , gives you a quick way to enable and disable your screen saver , and has a option to disable your screen saver for a predefined time , this feature is very valuable.

Disable your screen saver when you are doing large jobs , like defragmenting your harddisk or rendering pictures , there are nothing as annoying as a screen saver swapping memory to disk and forcing the defrag to start over , or a screen saver taking all the CPU cycles when you need them for rendering a picture.

Before doing a large job just right click PowerBar and click 'Disable screen saver', when the job are over just right click PowerBar and click 'Enable screen saver'.

Or just select 'Disable screen saver for 1 hour' 2 or 4 , depending on the time your job is going to take , this will disable your screen saver immediately and automatic enable it after the time has elapsed.

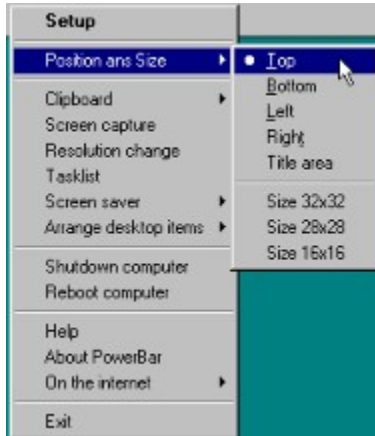


You also has the option to launch your screen saver, if you want security enable the screen saver password feature , now when you go for coffee at work launch your screen saver to protect your computer from other people , normally you will have it set to 5 / 10 minutes before it starts (many things could happen in 10 minutes). It really only take a few seconds to se what you are doing , and writing , or sending the contents of your document folder over the network.



Main menu

PowerBar main menu.



Setup : To start the configuration dialog.

Top, Bottom, Left, Right : Enable you to position PowerBar on the selected side of the screen.

Title area : Place powerbar on the top of the screen in the title area.

Size 32x32, 28x28, 16x16 : Set the icons size toolbar size the fit the selected icon size.

Screen capture : Start the screen capture dialog.

Resolution change : Start the resolution change dialog.

Tasklist : Start the tasklist dialog.

Screen saver : Popup menu with screen saver options.

Arrange desktop items : Popup menu , Arrange your desktop items at the top or bottom , or hide your desktop icons.

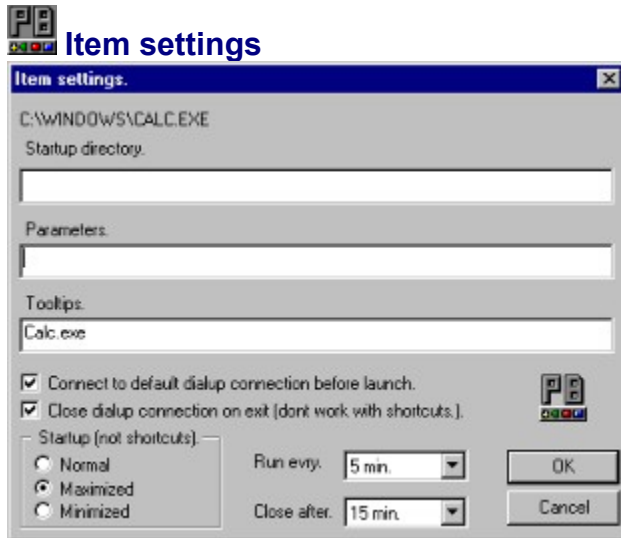
Shutdown computer : Will start to shutdown your computer.

Reboot computer : Will start to reboot your computer.

About PowerBar : About the program , and author/registration information.

On the internet : Popup menu , write mail to PLEM , or visit our homepage.

Exit : Close PowerBar.



In the items settings dialog , you have the options to setup how a program/folder should start. On the top of the window the full path to the application/folder is shown.

Startup directory.

Specify the startup directory for the application , when the application is started this will be the default directory for that application.

Parameters.

If a application needs additional parameters this is where you specify them.

Tooltips.

This is the text that is showed when you place the mouse above the icon , before clicking it.

Connect to default dialup connection before launch.

Before the program is launched PowerBar will try to make a connection to your default dialup network connection , if it cant make the connection it will not launch the program , if it gets a connection it will launch the program. You need to specify the default dialup network connection in the setup dialog 'Internet access and mail' before using this feature.

Close dialup connection on exit.

When you close the application PowerBar will stop any dialup network connection (if any is active). This option will not work with shortcuts. You need to use a link directly to a .exe or .com file for this to work.

Normal.

Show the application with it normal window.

Maximized.

Show the application with a maximized window.

Minimized.

Show the application with a minimized window.

Run every.

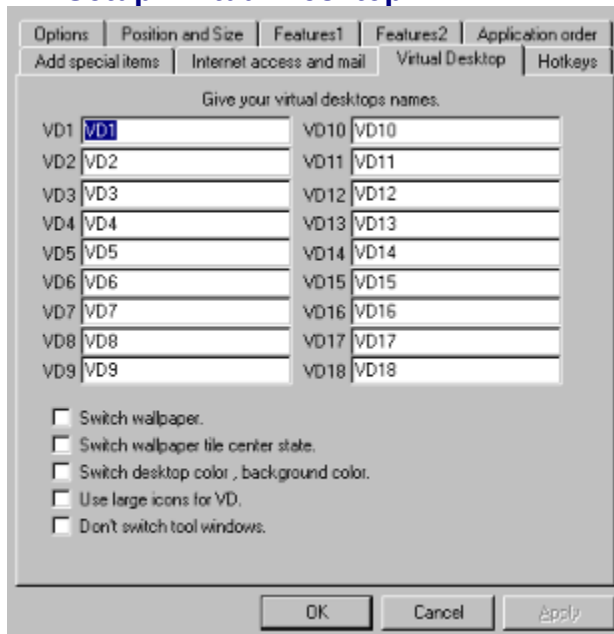
Here you are able to schedule the application to run within a predefined interval , you are able to specify your program to run with 2 - 5 - 10 - 20 - 30 min. intervals , or every 1 - 2 - 4 - 8 hour.

Close after.

This will allow you to force a application to stop and close after a specified time , you are able to close it after 2 - 4 - 6 - 8 - 10 - 15 - 30 min , or 1 - 2 - 4 hours. This option will not work with shortcuts. You need to use a link directly to a .exe or .com file for this to work.



Setup 'Virtual Desktop'.



VD = Virtual Desktop.

NOTE: When you switch VDs speed is very important , so you should only select the options you think is important to have.

VD1 - VD18 : Here you are able to name your VDs , the names you give each VD will be displayed as tooltips if you are using small icons to symbolize VDs , or the first 5 chars will be printed directly inside the icon if you use large icons.

Switch wallpaper : If this option is checked you are able to have different wallpapers on each VD. Switch to the VD where you want to change the wallpaper and change the wallpaper like you normally do.

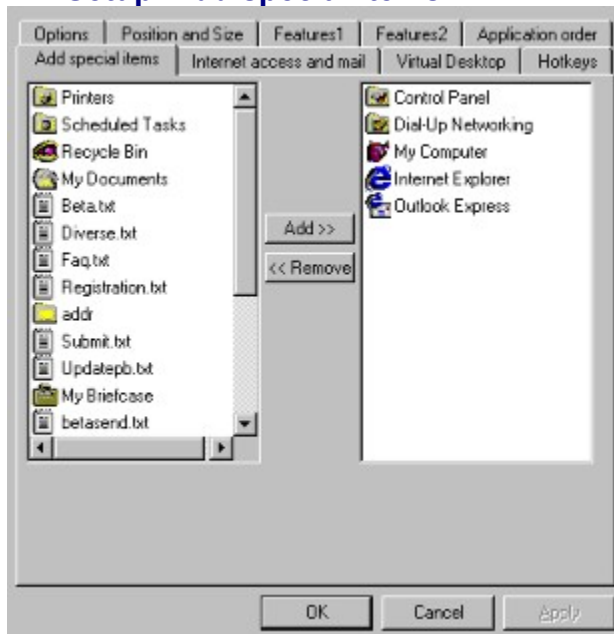
Switch Wallpaper title center state. : If this option is checked PowerBar will save the tile/center state of your wallpaper , you only need to use this option if you have different tile/center states in your VDs.

Switch desktop color , background color. : If this option is checked you are able to have different colors on each VD , You change the background color like you normally do , PowerBar will remember the background colors for each VD.

Use large icons for VD. : If this options is checked PowerBar will make the symbolic icons for each VD large and print the first 5 letters of the name of the VD inside the icon.

Don't switch tool windows : Check this option if you don't want PowerBar to switch tool windows when you change VD , you should check this option if you want PowerBar to work along with other toolbars.

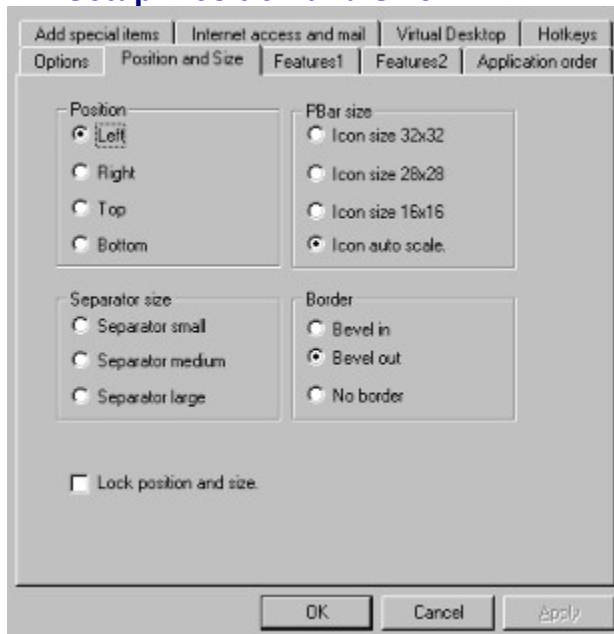
Setup 'Add special items'.



From this setup dialog you are able to add special items to PowerBar , a special item is a program/application/system object or data , you are able to add things like Control Panel - Printers - Dialup Networking - My Briefcase - Recycle Bin - My computer or any icon located on the desktop. To add a icon to PowerBar just select the icon you want on the left side and press the 'Add >>' button. The icons added from this menu will be place just under the drive icons and before the VDs. After you have added your special items to PowerBar , just right click the icons on PowerBar to control individual icon settings like Large/Small icon Add/Move to tray.



Setup 'Position and Size'.



Position :

Left : Select this to dock PowerBar on the left edge of the screen.

Right : Select this to dock PowerBar on the right edge of the screen.

Top : Select this to dock PowerBar on the top edge of the screen.

Bottom : Select this to dock PowerBar on the bottom edge of the screen.

Pbar size:

Icon size 32x32 : Select this to size PowerBar to fit a 32x32 icon.

Icon size 28x28 : Select this to size PowerBar to fit a 28x28 icon.

Icon size 16x16 : Select this to size PowerBar to fit a 16x16 icon.

Separator size:

Separator small : Select this to make the size of the separator small.

Separator medium : Select this to make the size of the separator medium.

Separator large : Select this to make the size of the separator large.

Border:

Bevel in : Select this to make PowerBar border bevel in.

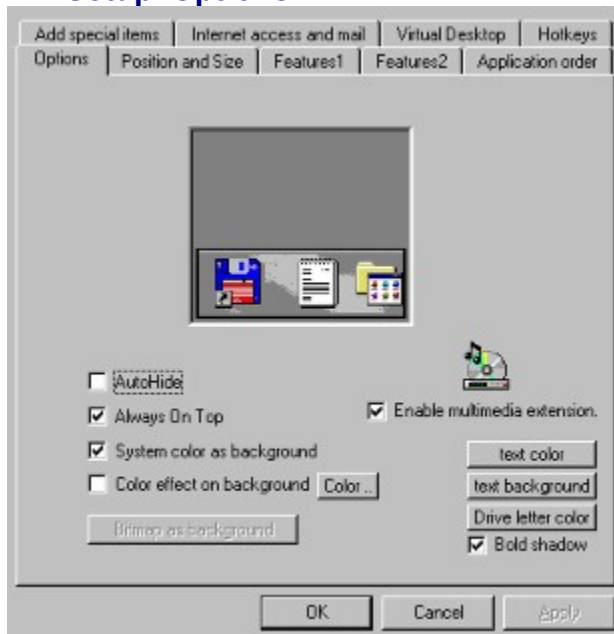
Bevel out : Select this to make PowerBar border bevel out.

No border : Select this if you don't want any border.

Lock position and size : Check this if you want to lock your current position and size , it will not be possible to move or resize the bar until you uncheck this option.



Setup 'Options'.



AutoHide : Check AutoHide to hide PowerBar from the desktop when there is a active application. Move the mouse the the edge where PowerBar is hidden to bring back PowerBar.

Always on top : Check this option to insure that PowerBar is always on top of other running applications.

System color as background : Check this if you want to use the system background color as the background color on PowerBar.

Color effect on background : Check this if you want to show a nice looking color effect on PowerBar background , you are able to specify ,what color the start color for the effect is , press [Color...] to specify the effect color.

Enable multimedia extension : Check this if you want to place a multimedia icon on PowerBar , this icon act as a drop target , and you are able to drag/drag multimedia files directly to this icon.

[text color] : Let you specify the text color to use for the digital clock - date - memory display - and the text in the virtual desktop icons.

[text background] : Let you specify the text background color to use for the digital clock - date - memory display.

[Drive letter color] : Let you specify the color of the letters on the drive icons.

Bold shadow : Sometime it is hard to read the drive letter , this option will make a larger font and make a black shadow around the letter. If you use this option it is recommended that you specify another color for the drive letter , this will make it more easy to read.



Setup 'Internet access and mail'.

Active	Server name	Login Name	Login Password
<input checked="" type="checkbox"/>	post6.tele.dk	125012616652	*****
<input checked="" type="checkbox"/>	bohr.get2net.dk	mp48477	*****
<input checked="" type="checkbox"/>	mail.plemsoft.com	pe	*****
<input checked="" type="checkbox"/>	mail.image.dk	prebene	*****

DUN = Dial-up Network.

Run on local network : Check this option to make all mail functions run directly on you local area network.

Connection setup : This is where you setup your Dialup network connections , the dropdown listbox show a list of all available DUN connections , each dun connection has its own login name and password , you should fill-in all the login names and passwords for all of your connections , this will make it more simple to use. After you have specified the login names and passwords you should select your preferred dun connection and press the **[Set]** button, The default connection are used in the item settings dialog to connect before it start a program , or other functions that need to connect without any interference , like check for new email every 1 hour.

POP Server mail setup : This is where you setup all options that are related to checking / peeking / reading emails , To make PowerBar check for new email you should fill-in one of the 4 possible email accounts , check 'Active' on the first entry , and write the name og your mail server under 'Server name' , this is normally a name like 'mail.server.com' or 'smtp.server.com' or just the name of your email server 'server.com' , now specify the Login name and password for this server.

Your email address : this entry will be used when you send emails. You only need to specify this if you are going to send emails using PowerBar.

Outgoing mail server : this is the name of your mail server that you use to send mail , normally this name is 'mail.server.com' or 'smtp.server.com' or just the servename 'server.com' , You only need to specify this if you are going to send emails using PowerBar.

Check not connected : This dropdown listbox enable you to specify how often you want PowerBar to check for new emails , you are able to set it to check every 5 - 10 - 20 - 40 min. or every 1 - 2 - 4 - 8 hours. Set it to Disable if you don't want PowerBar to automatic check for new email. When it needs to check for new email it will dial-up your default DUN connection , check for new emails , and disconnect your DUN connections. This process normally takes under 1 min. on a normal modem and under 10 sec. on a isdn modem.

Check connected : This dropdown listbox enable you to specify how often you want PowerBar to check for new email when you are already connected to a DUN connection or use a Lan. You are able to set it to check every 2 - 4 - 6 - 8 - 10 - 15 - 20 - 30 min.

Show on PowerBar : Check this to show a icon on PowerBar , this icon will allow you to get a popup menu with many connection and mail features , and it will show if you are connected or disconnected from your DUN connection , a red light means that you are disconnected , a green light means that you are connected , a yellow light means that the PowerBar is trying to make a connection , you are always able to move the mouse over this icon to show you the latest state of a mail check or a connection.

Show in tray : Check this to show a icon in the tray , this icon has the same possibilities as 'Show on PowerBar'. But it don't have the real-time tooltips status.

Always peek mail : Check this if you always want PowerBar to peek at your email and make you read them without deleting them from your email server , Whenever PowerBar see a new email it will peek it.

Check after connecting : Check this if you always want PowerBar to check for new email when you make a DUN connection.

Check at startup : Check this if you want PowerBar to check for new email when you start PowerBar.

Play wav when new mail : Check this option if you want to play a wav file when you have new mail. you should fill out the text box below with the full path to a .wav file.



Setup 'Hotkeys'.



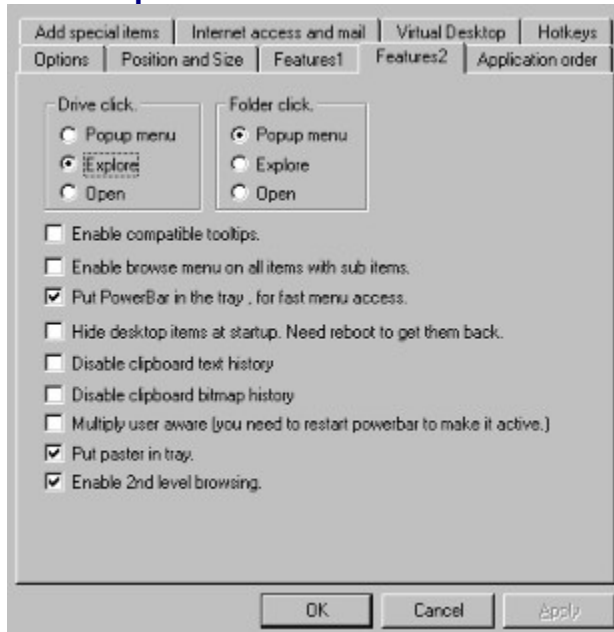
Disable hotkeys : Check this to disable all hotkeys.

To use the hotkeys you need to press the CTRL+SHIFT at the same time and then press the letter for the function you want , most of the hotkeys are explained in the screenshot above.

CTRL+SHIFT + (W-E-R-T-Y-U-I-O) : Paste from the Paster line 1 , if you press CTRL+SHIFT+W then the contents of the paster first line will be copied to the clipboard , after this PowerBar will make a paste command and place the text directly where you have the cursor. If you press CTRL+SHIFT+E it will take the text from the Paster line 2. To try this open a notepad and try pressing CTRL+SHIFT+W , you see that the text from Paster line 1 will appear. After you get used to using these hotkeys you find that it is most useful when you fill out forms , or have the need to write the same text often.



Setup 'Features2'.



Drive click : Select 'popup menu' if you want to show the contents of your drives in a popup menu when you press a drive icon on PowerBar , Select 'Explore' if you want PowerBar to start explorer when you press a drive icon, or select 'Open' if you want PowerBar to open a single window with the contents of the drive icon you press.

Folder click : Select 'popup menu' if you want to show the contents of your folders in a popup menu when you press a folder on PowerBar , Select 'Explore' if you want PowerBar to start explorer when you press a folder , or select 'Open' if you want PowerBar to open a single window with the contents of the folder you press.

Enable compatible tooltips : Check this option if you have don't get tooltips when you move your mouse over a icon on PowerBar , On very early versions of Windows95 you need to use this option.

Enable browse menu on all items with sub items : Check this if you want to add a sub popup menu to all icons on PowerBar that contain sub items , The browse menu is added to the context menu for each icon , and is only active if you right click a icon on PowerBar.

Put PowerBar in the tray, for fast menu access : Check this if you want to put a icon in the tray to represent PowerBar , you are able to right click this icon to bring up PowerBar main menu , or left click to quickly place PowerBar in the title area on the top of your screen , press it again to restore your normal settings , this will allow you to quickly make more available screen space. This will not work properly if you use autohide , it will then restore it to a docked state.

Hide desktop items at startup , Need reboot to get them back: Check this option to hide all the icons on your desktop at startup , NOTE: this option will not work when you are using IE4.0. and will not work on new versions of windows.

Disable clipboard text history: Check this option to disable the clipboard text history.

Disable clipboard bitmap history: Check this option to disable the clipboard bitmap history.

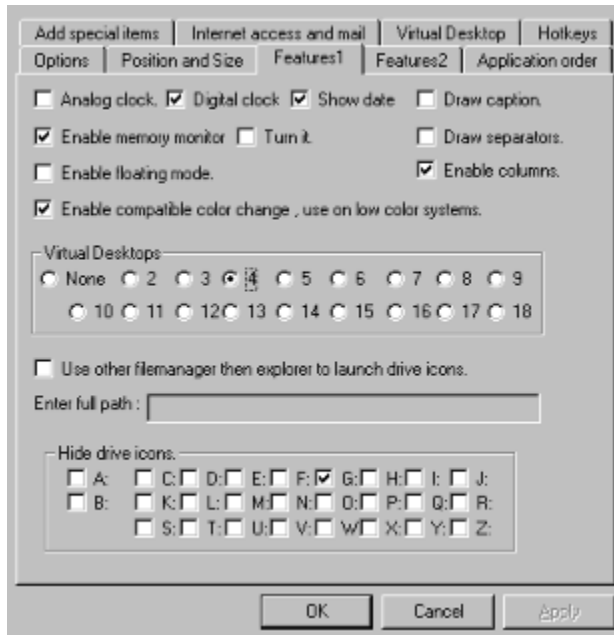
Multiply user aware (you need to restart PowerBar to make it active) : Check this option if you want PowerBar to be multiply user aware. If more then 1 is using your computer and you want every person to have its own configuration you should check this option. PowerBar will then save the configuration under the name you use to login to windows. In order for this to take effect you need to reboot your computer.

Put Paster in tray: Check this option to put a icon in the tray that make you quickly copy text from the Paster to the clipboard , just press the icon and a popup menu will appear , from here you are able to select the text you want to copy directly to the clipboard.

Enable 2nd level browsing: Check this if you want to use second level browsing , Second level browsing is a function that allows you to have sub menus on all items that have sub items in a popup menu , Try to move a folder from your harddisk to PowerBar , when you press it you get a popup menu with the contents of this folder, with second level browsing checked you also get a popup menu for all sub folders in that folder.



Setup 'Features1'.



Analog clock : Check this to show a Analog clock on PowerBar , this type of clock works best if you have the bar size set to 32x32 or larger , otherwise it get to small to read the time.

Digital clock : Check this if you want to show a digital clock on PowerBar. The size of the font used will follow the size of the bar , so if your are using a very small bar like 16x16 its hard to read the time.

Show date : Check this if you want to show the current date just below the clock , this option only works with the digital clock on.

Enable memory monitor : Check this if you want to show a memory monitor , it will show the amount of available physical memory, if you move the mouse over this a tooltip with information on available physical memory - total memory and the size of your swap file will show.

Turn it: Check this if you want to turn the box where the memory monitor is showed , this allow you to show the memory monitor even if you have the bar set to 16x16 or smaller.

Enable floating mode: Check this to put PowerBar in the floating mode , this option allow you to place PowerBar without docking to any of the edges. To move PowerBar in this mode you should locate the caption area of PowerBar if this is not visible its located where the clock is you move PowerBar here just like any normal window. You are able to resize PowerBar on all 4 sides. If you right click PowerBar to bring up the main menu you see that 2 new items is added , 'Horizontal Align' Select this if you want PowerBar to organize the icons Horizontal , 'Vertical align' Select this if you want PowerBar to organize the icons vertical. The best way to use this mode is to experiment with the different locations you are able to place PowerBar on , like try to set it on top of the windows taskbar , or place it in the title area, there are many possibilities.

Enable compatible color change, use on low color systems : Check this option if you are running on a low color system , if you are using 16 or 256 colors you should check this option , or if you experience that the colors on PowerBar is not the correct colors.

Draw caption : Check this if you want PowerBar to draw a small caption , this is very useful if you use the floating mode , Then you see the caption where you are able to move the PowerBar window.

Draw separators : Check this if you want PowerBar to draw a small line where you place your separators.

Enable columns : Check this if you want PowerBar to organize icon in multiply columns , If you want to have combined Large and Small icons you should check this option.

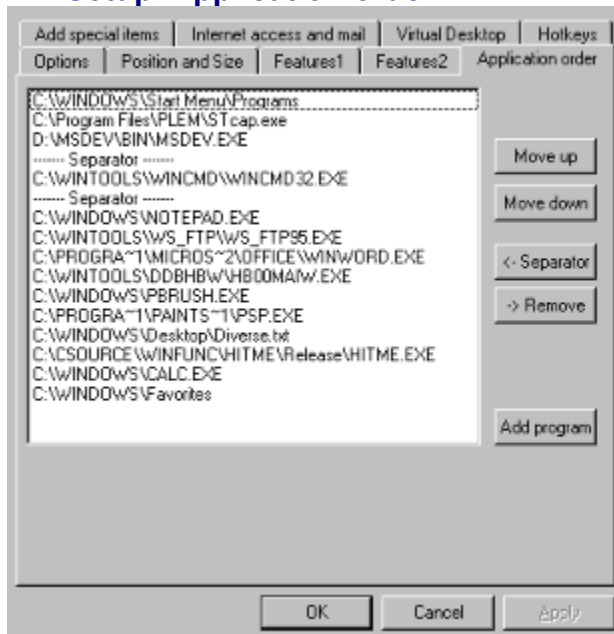
Virtual Desktops : Select the number of Virtual Desktops you want to have on PowerBar , each Virtual Desktop will have its own icon.

Use other filemanager then explorer to launch drive icons : Check this if you want to use another filemanager then explorer when you press a drive icon , you should enter the full path under ‘Enter full path:’ to your filemanager. When you press a drive icon then your filemanager entered here will be launched with the drive letter of the drive you pressed as parameters , most filemanagers supports this and will startup on the drive your pressed.

Hide drive icons: Select the drives you don’t want to show on PowerBar , if you have many drives or are running on a network , it is useful to hide some of the drive icons so they will not take all the space on your PowerBar.



Setup 'Application order'.



From this dialog you are able to add programs , and set the order of the icons you already have on PowerBar , to add a program to PowerBar just press the 'Add program' button , you now get a file dialog where you are able to select the program you want to add. To move a entry to another position , just select the entry you want to move , and press the 'Move up' or 'Move down' button, To remove a entry from PowerBar just select the entry you want to remove and press the '-> Remove' button. To insert a separator select a entry and press the '<- Separator' button , the separator will now be inserted below the selected entry.



Setup 'Internet and mail menu'.



DUN = Dial-up network.

When you right click the **Internet and mail icon** you get a popup menu where you are able to perform email operations or connect / disconnect to your DUN connections. The popup menu is separated in 3 sections , the first is the functions you are able to perform , the second is the possible dialup network connections your are able to dial , and the third will show you the from and subject entry from any peeked emails.

Disconnect: Disconnect all your active DUN connections.

Connect to default: Connect to your default DUN connection.

Check for new mail: Connect to your default DUN connection and check for new mail , disconnects when finish.

Check and peek new mail: Connect to your default DUN connection and check for new mail , if new mail exist then PowerBar will peek the emails and disconnect when finish.

Read mail: Open the read mail dialog , from here you are able to read any peeked emails.

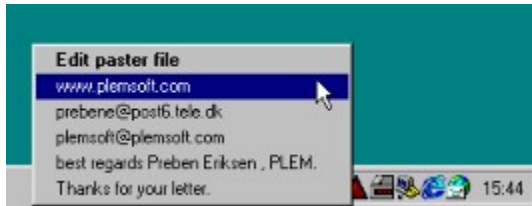
Send mail: Open the send mail dialog , from here you are able to send email.

Dial [x] : Select the DUN connection you want to dial.



New in this release.

- **Dialup Network Support (Internet access / RAS / LAN)**
- **Email support , Check / Peek / Send.**
- **Multilevel browsing.**
- **Enhanced Virtual Desktop support.**
- **Multi-user aware. Every user has its own configuration.**
- **Digital clock , with or without date.**
- **Hotkeys.**
- **Paster.**
- **Color control.**
- **Launch scheduler, run every 2-5-10-20-30 min, or 1-2-4-8 hour.**
- **Launch as minimized-maximized-normal**
- **Many new item settings :**
- **Connect to default Dialup network connection before launch.**
- **Close default Dialup network connection when program close.**
- **Place PowerBar in the title area of your application.**
- **Set text foreground/background and drive text color.**
- **Many minor bug fixes/new features.**



The Paster will allow you to quickly reuse text you use often , how many times a day do your type your email address , or sign your letters ‘best regards x’ , the paster will allow you to quickly paste text like that directly into your documents or into forms. After you get used to using the Paster you find out that you are able to fill out forms quickly , and that it really save you time typing the same text over and over again. The paster is showed in the tray as a little red icon. To enter the text you want in the paster you should press the Paster icon in the tray and select ‘Edit Paster File’ , this will open a notepad with the contents of your Paster file, Each line in the Paster file represent a Paster line , you should enter all the text lines that you normally use, and save the file. To quickly insert a Paster line you are able to use hotkeys , try to open a new document and press CTRL+SHIFT+W , now the contents of Paster line 1 is copied to the clipboard and pasted directly into you document.

Hotkeys:

- CTRL+SHIFT+W : Paste the contents of Paster line 1
- CTRL+SHIFT+E : Paste the contents of Paster line 2
- CTRL+SHIFT+R : Paste the contents of Paster line 3
- CTRL+SHIFT+T : Paste the contents of Paster line 4
- CTRL+SHIFT+Y : Paste the contents of Paster line 5
- CTRL+SHIFT+U : Paste the contents of Paster line 6
- CTRL+SHIFT+I : Paste the contents of Paster line 7
- CTRL+SHIFT+O : Paste the contents of Paster line 8

Tray icon:

To copy a line from the Paster file to the clipboard , just press the Paster icon in the tray and select the text you want to put in the clipboard , when you use the mouse to select a line from the Paster file PowerBar will not make a ‘paste command’ but only place the text in the clipboard. To paste the text directly you should use the hotkeys.

