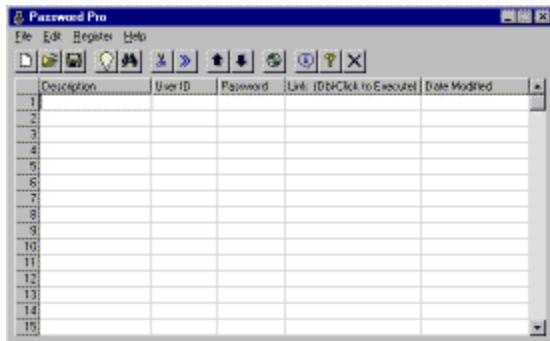



# Welcome To Password Pro!



Password Pro is a professional business tool for keeping track of User Id's and Passwords. Password Pro allows multiple users to maintain their own password lists. Password Pro has the following features:

- Very easy to use intuitive user interface.
- Unlimited number of password files can be created.
- Each password file can hold 500 different passwords.
- Each record can point to a "Link" which can be launched by Password Pro.
- Each password file can be optionally "Password Protected".
- Random Password Generator

**[Click Here To Learn How To Register](#)**

-  - Create A New Password File
-  - Open A Saved Password File
-  - Saves The Current Password List
-  - Generate A Random Password
-  - Create A Link
-  - Delete Selected Rows
-  - Insert A New Row
-  - Move The Current Row Up
-  - Move The Current Row Down
-  - How To Register Password Pro
-  - About Password Pro
-  - Help! This File
-  - Save The Current File And Exit

To edit a field in the editor simply click on a field and start entering your data. By pressing "TAB" you can move to the next field.

Password Pro  
CMB Software  
1199 Laurel Court  
Carol Stream, IL 60188  
Order Line 1-800-964-9223 or 817-280-9222  
[support@cmbsoftware.com](mailto:support@cmbsoftware.com)  
<http://cmbsoftware.com>

# How To Register Password Pro



*There are FIVE ways to register Password Pro.*

Note: Password Pro is 100% functional! While the program is un-registered you will only be able to edit 3 passwords!

Registration Fee Is Only **\$9.95**

**1) Register ONLINE 24 hours/day at <http://cmbsoftware.com>**

**2) Call our TOLL FREE order line at 800-964-9223 or 817-280-9222.**

**3) EMAIL us at [orders@cmbsoftware.com](mailto:orders@cmbsoftware.com) and include the following:**

- \* Name of Program (ie; Password Pro)
- \* Type of credit card.
- \* Number on credit card.
- \* Expiration Date.
- \* Name on credit card.
- \* Mailing address that the credit card is billed too. (For card verification)
- \* Your EMAIL address or FAX number

(All information is STRICTLY confidential!)

**4) FAX your order. Please include same info as above.**

Our fax number is 630-293-9621 (USA)

**5) Send your order by POSTAL MAIL.**

Password Pro  
1199 Laurel Ct.  
Carol Stream, IL  
USA 60188

The day we receive your order, you will be sent back a registration code to enter into the program. This will allow the program to fully function.



