

Welcome!

Welcome and thank you for choosing **Quilt Design Wizard™** from The Electric Quilt Company! Quilt Design Wizard™ is a beginner-friendly software program for quilters to design quilts on screen.



By enabling you to visually capture your design ideas, Quilt Design Wizard™ will help you develop your artistic eye and spark your creativity. Wait until you see the hundreds of blocks and fabrics ready for designing pieced block quilts.

And that's just the beginning. You'll be able to print templates, foundation patterns, rotary cutting charts, yardage estimates and full-color blocks and quilts.

And there's more. You'll be able to download fun new blocks and fabrics each month via the Quilt Design Wizard™ web site. Your fun is just starting!

Quilt Design Wizard™ was designed to be easy to use, so you can probably do many things without reading much more of this manual, especially if you are an experienced computer user.

We recommend that everyone read and complete at least Lesson 1. This lesson will teach you the basics of designing a quilt and printing. Then, if you're anxious to get started, go ahead and try it out. If you get stuck, click on the Videos tool along the top of the screen to see a list of help videos. If you don't find your answer there, refer to the *Reference* section of this manual.

Registering Quilt Design Wizard

Please take a moment to register your software. You can register online or by sending us the registration card found in your product box. Your registration entitles you to:

- **Free Unlimited Technical Support**

We're committed to making Quilt Design Wizard™ work for you. If you have any questions, please contact our technical support staff.

- **Registered User Discount**

As a registered user, you'll be eligible for special prices on many new products and bonus offers on our other best-selling software.

Contact Us

If you have a question about Quilt Design Wizard™ and you can't find the answer in the manual, Learn tab, or the help videos, then you can contact us in any of the following ways:

- Visit our web site at: www.quiltwizard.com.
- Email us at: techsupport@quiltwizard.com clearly describing your problem.
- Call us at 419-352-1134 between 9:00 AM and 5:00 PM Eastern Standard Time, Monday through Friday.
- Send a fax to 419-352-4332 clearly describing your problem.

Conventions Used in this Manual

Bold text is used for keys, buttons, check boxes, radio buttons, menus or menu items, and text that you are directed to type.

QDW REGISTRATION CARD

This is your "proof of purchase" and must be returned for you to receive technical support and future upgrade pricing.

Serial # **QW**

Name _____

Customer # (# known) _____

Address _____

City _____ State/Prov. _____

Zip/Postal Code _____ Country _____

Phone _____ E-mail _____

Date Purchased _____ Seller _____

Note: We do not sell or distribute our mailing list.



Bold text is used to refer to many items on-screen. "Click the No button."

Round to the nearest:

1/8 inch 1/16 inch

Radio buttons

Italicized text refers to names for folders, files, drives, windows, and dialog boxes.

It's also used for new terms, lesson or reference sections, and important ideas.

Ctrl, **Shift** or **Alt** followed by a letter means hold down that key while pressing the letter. For example, **Ctrl + S** means hold down the **Ctrl** key while pressing the **S** key on the keyboard.

Click means click the left mouse button.

Double-click means click the left mouse button twice in quick succession without moving the mouse.

Right-click means to click the right mouse button.

Drag means to hold down the left mouse button while moving the mouse.

A *context menu* is the menu that appears when you right-click over an object.

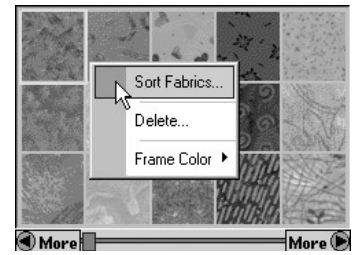
To indicate a series of steps, arrows appear between the commands. For example, to print a quilt from the File menu, the following phrase may be used: "Click **File** > **Print** > **Quilt**."

Tips and notes look like this:



Tip

If you accidentally click in the wrong location on the quilt, press **Ctrl + Z** to undo your last action.



Right-click to display context menus.

Getting Started

System Requirements

To run Quilt Design Wizard™ you'll need a computer with a CD-ROM drive for installation, Windows 98/ME/2000/XP, 64 MB of RAM, Internet Explorer 5.01 or higher, Windows Media Player, and 450 MB free disk space. It is necessary to run in 16-bit color mode or higher, and at 800 x 600 resolution or higher.

Installing Quilt Design Wizard™

Before you begin the installation, close any programs running on your computer.

- 1 Insert the disc into your CD-ROM drive.
- 2 Click **Start**.
- 3 Point to **Settings**. (XP users skip this step.)
- 4 Click **Control Panel**.
- 5 Double-click **Add/Remove Programs**.
- 6 Click the **Install** button. (XP users click the **CD or Floppy** button.)
- 7 Follow the instructions on the screen.

Important: If you choose to install Quilt Design Wizard™ on a drive other than the C drive, be sure to put it in a new folder. You can either create the folder before you install or during the installation. In the **Choose Destination Location** box, click **Browse** if you don't want the program to be installed to the current path listed. To change the drive letter, double-click through the folders until you are in the folder in which you want to install the program. If you need to create a new folder, make sure there is a "" (no quotes) at the end of the current path, then type **Quilt Design Wizard** in the Path typing box. Click **OK**. You'll see a message asking if you want to create a folder. Click **Yes**. Continue with the installation.

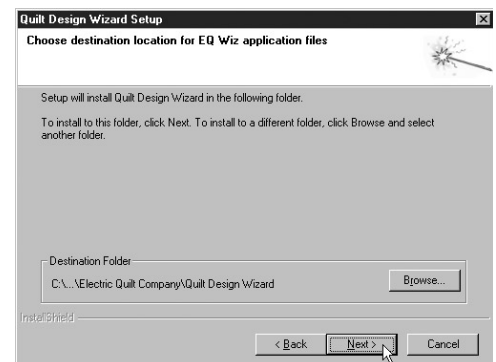


Step 2



Add/Remove Programs

Step 5



The installation location is where the program files are installed. It is recommended that you choose the default location by clicking **Next**.

Running Quilt Design Wizard™

The installation creates an icon on the Windows Desktop and in the Electric Quilt program group. To run Quilt Design Wizard™, double-click the desktop icon or use the menu by choosing **Start > Programs > Electric Quilt > Quilt Design Wizard**.



Step 1

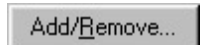
Uninstalling Quilt Design Wizard™

- 1 Click **Start**.
- 2 Point to **Settings** (XP users skip this step).
- 3 Click **Control Panel**.
- 4 Double-click the **Add/Remove Programs** icon.
- 5 Find **Quilt Design Wizard** in the list at the bottom of the dialog.
- 6 Click the name once to select it. This will enable the **Add/Remove** button at the bottom of the dialog.
- 7 Click the **Add/Remove** button. (XP users click the **Change/Remove** button.)



Add/Remove Programs

Step 4



Step 7

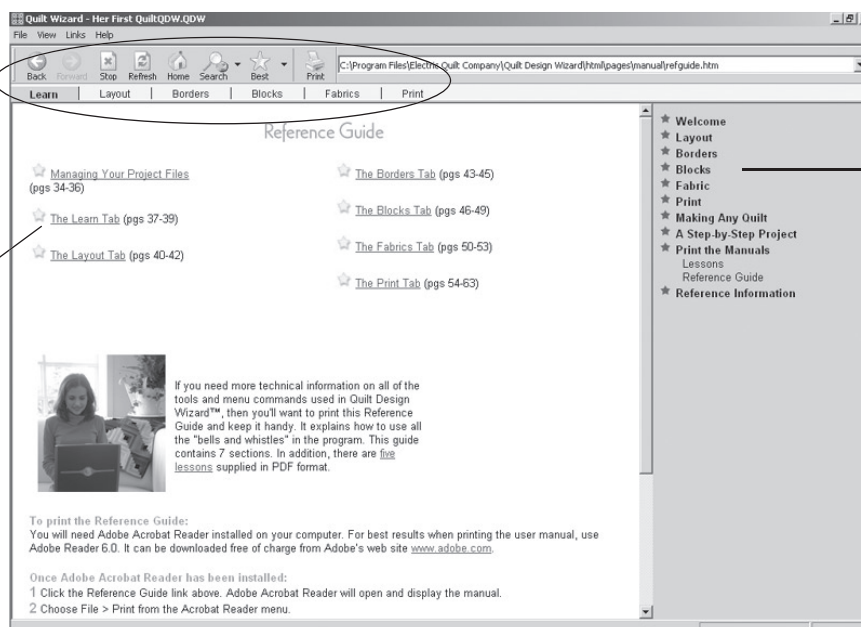
You may be prompted with the message “Remove Shared Files?” during the uninstall process. You may elect not to remove these shared files.

Overview

The Quilt Design Wizard™ screen has tabs along the top to guide you through the steps of designing a quilt. When you're on the **Learn** tab as illustrated here, you'll find all kinds of useful information about how to use the software and general quilting *how-to*. This part of the program works just like a web browser. When the mouse cursor floats over a *link*, the cursor changes indicating this is a place to click. The links take you to more information. To return to the previous screen, click on the browser's **Back** button found at the top of the screen. Because there is so much information, we've included a complete site map. To print it out make sure you are on the Learn Tab, click on Print the Manuals, then click Reference Guide. You will see the page below. The second link "The Learn Tab (pgs 37-39)" has the site map.

Tools for navigating the Learn tab and for navigating the World Wide Web

Downloads the section of the Reference Manual that includes the site map.

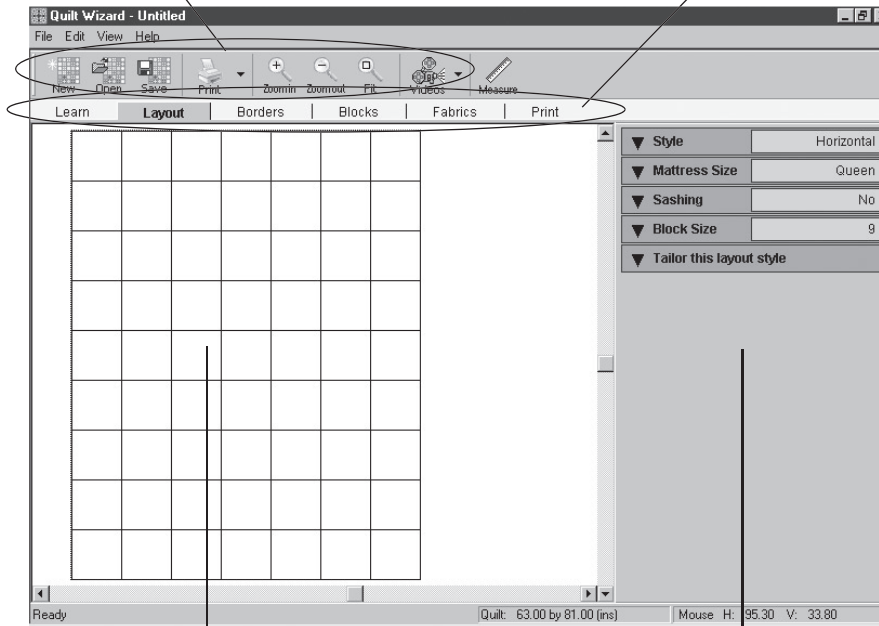


This side of the screen is the table of contents for the topics on the Learn tab. See "Ref_2_Learn.pdf" pages 38-39.

Whenever you are on any of the other tabs, you will be looking at a quilt. You will start by selecting a **Layout** and size. Then you will add **Borders** and **Blocks**. If you like, you can recolor the quilt with new **Fabrics**. When your design is finished click the **Print** tab to explore the printing options.

Tools for designing and saving quilts.

*These are the steps you should follow to design a quilt.
Just click on each tab from left to right.*



*This is the design wall for the quilt.
There is always one quilt per project.
Whenever you click **Save**, you're saving the
quilt you see here.*

*This side of the screen, called the palette,
contains the tools needed for designing and
printing quilts and patterns.
Whenever you change tabs above,
the appropriate tools will load here
automatically.*