

Lesson 5

Layouts and Borders

In this final lesson we'll explore on-point layouts and borders. Let's get started by making an on-point layout.

- 1 Double-click the **Quilt Wizard** icon on your desktop to start the program. Click the **Layout** tab.

Remember to always click on the down-pointing arrows to open controls.

- 2 Click **Style**. Click **On-point**.
- 3 Click **Mattress Size**. Click **Queen**.
- 4 Click **Sashing**. Click **No**.
- 5 Click **Block Size**. Click **9**.
- 6 Click the **Borders** tab.
- 7 Click the **Add** button.
- 8 Click the fourth image of **Corner Blocks** for the style.
- 9 Click to place a check in **All** if it is not checked already.
- 10 Drag any one of the sliders so that the border is **6.00** inches wide.
- 11 Click the **Blocks** tab.
- 12 Click **Blocks in the Library**.

Once you've opened the library control, keep in mind that here you position the mouse directly over the name of the category and click to display the blocks in that category.

- 13 Scroll up or down until you see **Unequal Nine Patch** and click on it to display the blocks.
- 14 Drag the slider under the blocks a bit more than half way. We're looking for the block titled *Alabama*.
- 15 Click on the *Alabama* block to select it.
- 16 Click the **Set** tool.
- 17 **Ctrl** + click in the upper-left corner block of the quilt layout.
- 18 Let's set a second block. Click on the block next to the *Alabama* block. It's called *New Album*.
- 19 **Ctrl** + click on an empty block in the layout.
- 20 **Ctrl** + click on the border corner blocks to set this same block.
- 21 Click the **Fabrics** tab.
- 22 Click the first red fabric to select it.
- 23 Click the **Paint Patch** tool.



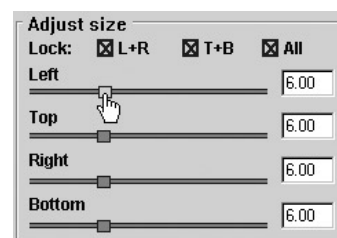
Steps 2-5



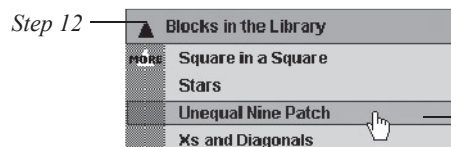
Step 7



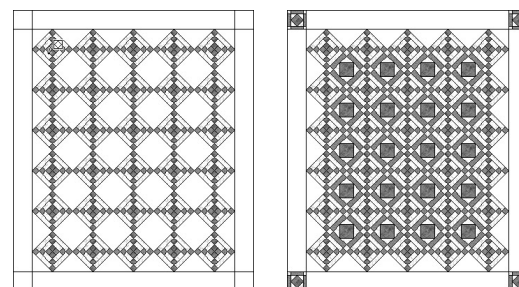
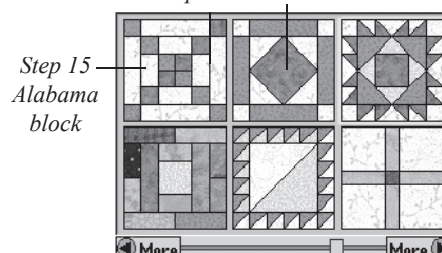
Step 8



Steps 9-10



Step 18 – New Album block



Steps 19-20



Step 23

- 24** **Ctrl** + click on one of the border sides to color all the borders at once.
- 25** Click the **Find Fabric** tool. Let's find the blue fabric.
- 26** Click on any blue patch in the quilt layout. Notice the blue fabric is automatically highlighted in the palette and the tool automatically switches back to the **Paint Patch** tool. We want to color all the empty triangles left in the layout with blue. We can color them one at a time with **Paint Patch** or we can color them all at once with **Paint Quilt**.
- 27** Click the **Paint Quilt** tool.
- 28** Click on one of the empty triangles in the quilt layout.

We've completed our on-point layout. It's important to understand how Quilt Design Wizard™ "thinks about size" when printing an on-point block pattern. We'll examine this feature now and learn about printing templates at the same time.

- 29** Click the **Print** tab.
- 30** Click on one of the *Alabama* blocks.
- 31** Click **Print Template Pattern** on the palette. You'll see the *Alabama* block.
- 32** As you recall from Lesson 2, putting a check in **Get size from quilt** gives us the correct pattern size for the block based on our quilt design. Let's do it. Click to check **Get size from quilt**.

What? The size controls change to **12.73** for both **Width** and **Height**. We selected 9 inches for the block size on the **Layout** tab. Why don't the controls display 9? Let's take a closer look.

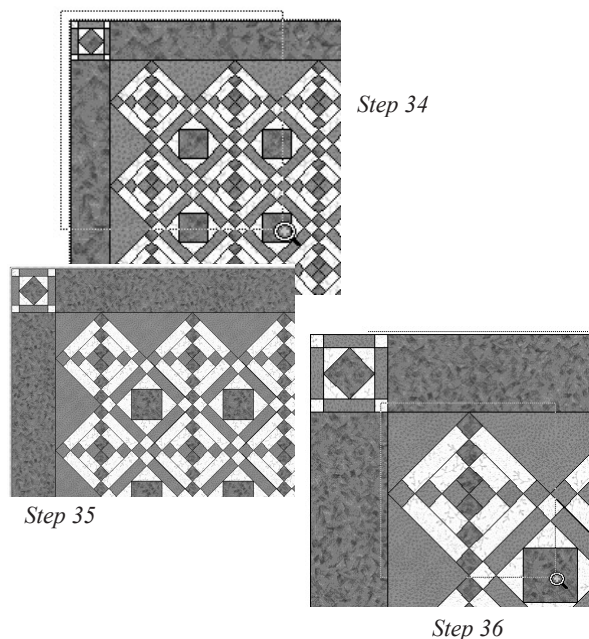
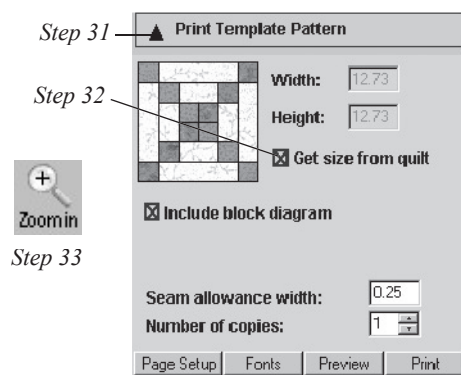
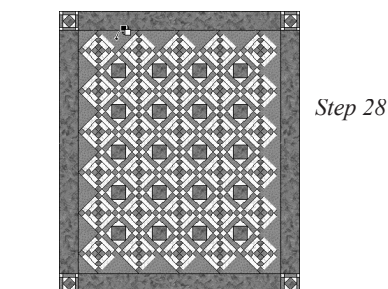
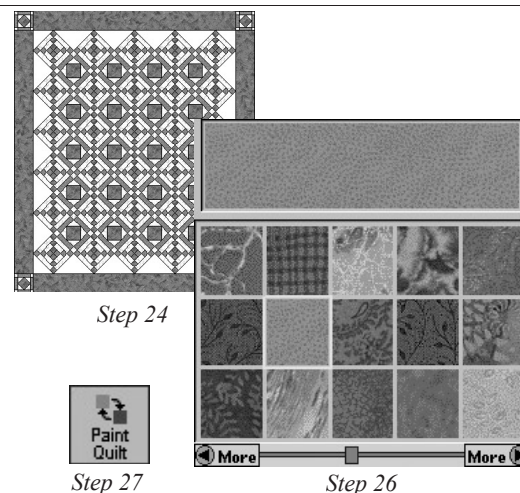
- 33** Click the **Zoom In** tool on the top menu bar. The cursor changes to a magnifying glass.
- 34** Position the mouse cursor just outside the upper-left corner of the quilt. Click and hold the left mouse button and drag diagonally to create a box surrounding at least four of the blocks. This will become the area magnified.
- 35** Release the mouse. The screen will redraw to magnify the selected area.
- 36** Click the **Zoom In** tool again and drag a box around one of the *Alabama* blocks.



Tip

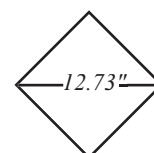
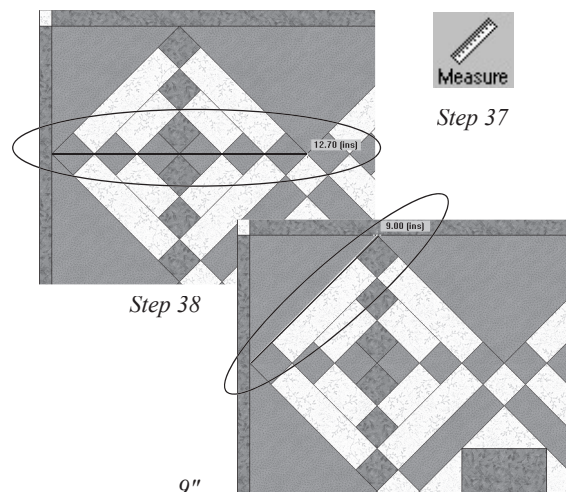
There are two scroll bars available for positioning your view of the quilt — one along the bottom and one along the right side. Use these scroll bars to adjust the area you want to view.

In an on-point layout, blocks are always square, same width and height, and are tipped 45 degrees to appear as diamonds. The size you select on the **Layout** tab is the length of the side of the block. When you click on **Get size from quilt** in the print palette, the width is measured across the diamond, and the height is measured from the top of the diamond to the bottom.

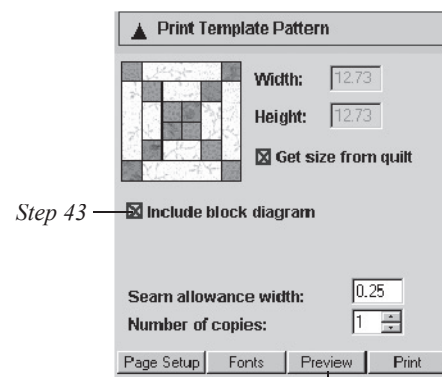


- 37 Now let's measure the block. Click the **Measure** tool on the top menu bar.
- 38 Position the mouse cursor directly over the left corner of the block. Press and hold the left mouse button and drag horizontally across to the opposite corner. Don't release the mouse button. The measurement will appear as you drag. You won't be able to measure it to exactly 12.73. The **Measure** tool is intended to be used for general approximations and not for delicate measurements.
- 39 While still holding down the mouse button, swing up to the top of the diamond. Now you are measuring the side of the block and can see that the block is 9 inches.
- 40 Release the mouse button. The **Measure** tool is always deselected when you release the mouse. If you'd like to measure again, you'll need to click on the tool first and then measure.
- 41 Click the **Fit** tool at the top of the screen. The screen will redraw with the quilt back in normal view.
- 42 Let's preview the pattern of the templates for the *Alabama* block.
- 43 Click to place a check in **Include block diagram** if it is not already checked.
- 44 Click the **Preview** button in the palette. Don't be confused by the image of the block in the palette and the one in the preview. The block that appears in the palette is a guide to show you which block you're going to print. The block diagram and the template pieces in the preview appear as they do in the quilt. In this case, they appear on point just like our quilt.
- 45 Quilt Design Wizard™ does its best to position the pieces on the paper, but sometimes you can do better.
- 46 Click the **Move** button at the top of the screen.
- 47 Click on the long rectangular template on page 2. It will turn red when you click on it.
- 48 Click and hold the left the mouse button and drag the template to page 1. If you need to, click on any of the other template pieces and move them so they don't overlap one another and all fit on a single page. Page 2 will continue to display here even though it's empty. Quilt Design Wizard™ knows that it's empty and won't print it.
- 49 Click the **Print** button on the top of the screen.

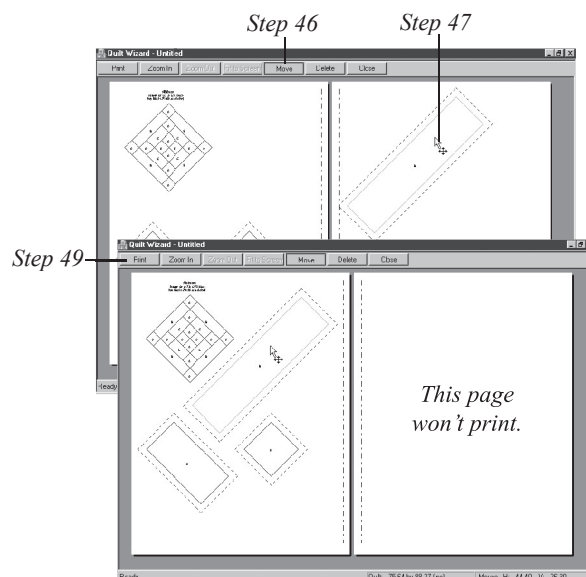
The print preview screen will close, the templates will print, and you'll be back viewing your quilt. Let's name the quilt and save the file.



When set on point, *Quilt Design Wizard™* measures across the diamond to **Get size from quilt**.



Step 44



Step 48

- 50 Position the mouse over the quilt, and right click to display the context menu.
- 51 Click **Notecard**.
- 52 Type **Alabama Album Quilt** on the name line, or type any name you like. Add any other information you would like.
- 53 Click the **X** to close the notecard.
- 54 Click the **Save** tool on the main menu bar. The *Save As* dialog box displays.
- 55 If you need to, use the down arrow to navigate to the *My Documents* folder and double-click on it so that the **Save in:** box displays *My Documents*.
- 56 In the **File name:** box, type **Lesson 5**.
- 57 Click the **Save** button. The name of the file will appear on the title bar.

If you're new to quilting, you may be interested in more information about how to use templates to construct quilt blocks. Let's learn about it.

- 58 Click the **Learn** tab.
- 59 Click **Making Any Quilt** in the palette on the right.
- 60 Click **Other Construction Methods**.

On the main screen you'll see topics on foundation piecing and templates. Foundation piecing is a construction method for sewing fabric to a paper pattern by stitching right on the lines of the paper pattern and then removing the pattern from the fabric. It's a wonderful sew-by-number method that's easy for beginning quilters. Many of the blocks in Quilt Design Wizard™ can be foundation pieced, and you can read about this construction method here. [All](#) of the blocks in Quilt Design Wizard™ can be constructed using template patterns.

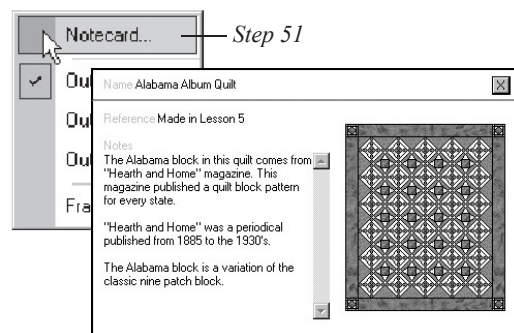
- 61 On the main screen, click on **Templates**.

If you like, you can read about templates now, or you can print it and read it at your leisure. Let's go back to our quilt.

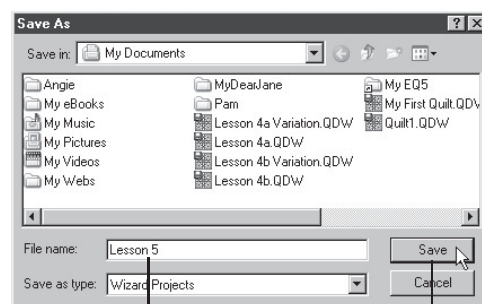
- 62 Click the **Blocks** tab. Our *Alabama Album Quilt* will display. Let's close this project and start another.
- 63 Click the **New** tool.
- 64 If you see a message asking if you want to save changes to Lesson 5, click **Yes**.

You'll see a new empty quilt layout. The name of the file on the title bar now says *Untitled*. Let's start another quilt layout and learn about the **Borders** tab.

- 65 Click the **Layout** tab.
- 66 Click **Style**. Click **Horizontal Medallion**.
- 67 Click **Mattress Size**. Click **Twin**.
- 68 Click **Sashing**. Click **No**.

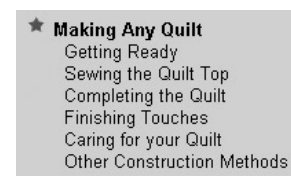


Step 52



Step 56

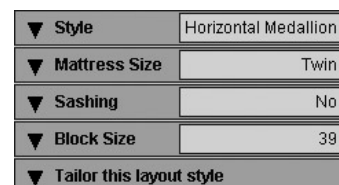
Step 57



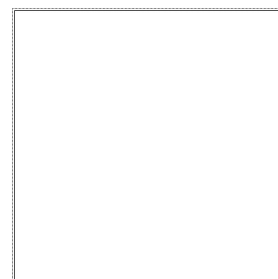
Steps 59-60



Step 63



Steps 66-69



A horizontal medallion layout with no sashing will look like a blank block.

69 Click **Block Size**. Quilt Design Wizard™ has automatically calculated the best size for us. It's 39 inches.

70 Click the **Borders** tab.

71 Click the **Add** button. Whenever the **Add** button is clicked and **Clone selected border** is not checked, a 1 inch **Mitered** border will be added to the outside of the quilt layout. The border will appear gray indicating it is the currently selected border.

72 Click the **Add** button 3 more times.

You'll see three more mitered borders get added to your quilt. You'll see the overall size of your quilt on the status bar adjust with each border you add. You'll see the currently selected border in gray. To select a different border, click directly on the border, or click the arrows beneath **Select border**.

73 Click the **Delete** button 3 times to remove the extra borders.

74 Click to place a check in **All** if it is not checked already.

75 Drag any one of the sliders up to **6.00** inches.

76 Let's take a quick tour of all the border styles. Click on the second image under **Style – Long Horizontal**. You'll see this border style on the quilt. It is just as described – long horizontal strips across the top and bottom of the quilt and shorter sides.

77 Continue to click on each style image to see that style appear on the quilt.

78 Click **Spaced Squares**. This border style divides the border strip with equally spaced squares. The distance between the squares will vary as the number of squares is adjusted. As the number of squares increases, the squares will eventually become rectangles.

79 To change the number of squares, use the controls at the bottom of the palette under **Blocks in border**. Click the down arrow for **Horizontal** twice to make it 1, and look at the top and bottom border strips. You'll see one square across the border strip.

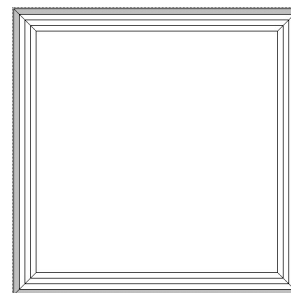
80 Click the **Horizontal** control up to 2. You'll see two spaced blocks.

81 Click the **Horizontal** control up to 3. You'll see three spaced blocks.

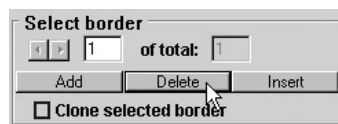
82 Continue to increase the number of blocks. Since our center medallion block is 39 inches and our border width is 6 inches, then 6 blocks will still fit across the border (6 times 6 equals 36), but 7 blocks will not (6 times 7 equals 42). Continue to click up higher than 7 to see the spaced squares become rectangles.



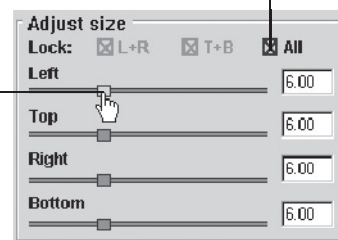
Step 71



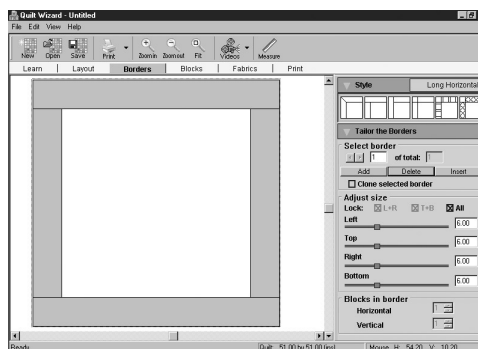
Step 72 – Quilt with 4 mitered borders



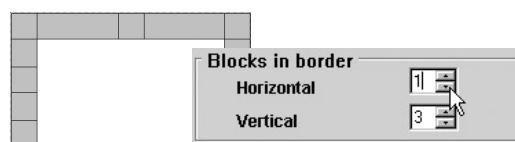
Step 73



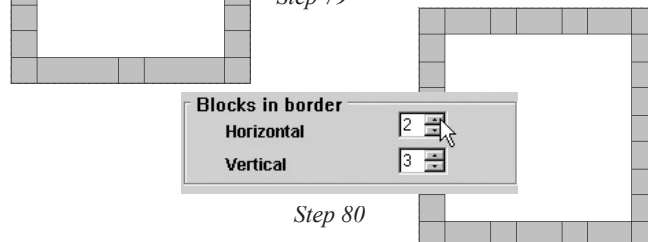
Step 75



Step 76



Step 79



Step 80

83 Click the **Diamonds** style to change the style.

This border style also lets you decide how many diamond-shaped blocks you'd like across the border. The actual shape of the diamond depends on the width and length of the border and on the number of diamonds. If you'd like the diamonds to be perfect squares turned on-point, you'll need to do a little math.

Since our center medallion block is 39 inches, we could make a 3 inch border with 13 blocks (3 times 13 equals 39), or a 13 inch border with 3 blocks. Neither of these scenarios give our quilt a very pleasing look. A 3 inch border is too narrow and a 13 inch border is too wide. We can do better.

84 Click the **Long Vertical** style.

85 Drag any slider to make this border **1.50** inches. Notice the overall size of our quilt is 42 by 42 inches. This is a better number. We can have a 6 inch border with 7 blocks or a 7 inch border with 6 blocks (6 times 7 equals 42). Let's make it.

86 Click the **Add** button.

87 Click the **Diamonds** style.

88 Drag any slider to make the border **7.00** inches.

89 Under **Blocks in border** click the **Horizontal** control arrows to display **6**.

90 Click the **Vertical** control until it displays **6**. We now have a pleasing border with perfect squares.



Tip

Remember that these blocks are 7 inches when measured horizontally and vertically. We don't know the size of the side of the block. We don't need to know it or worry about it because Quilt Design Wizard™ has done the calculating for us. Just be sure to check *Get size from quilt* when printing the patterns for these blocks.

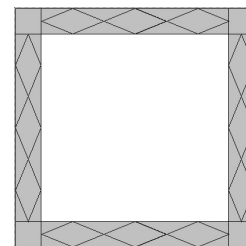
91 Click the **Add** button.

92 Click the **Spaced Squares** style.

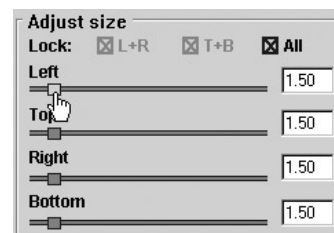
93 Drag any slider to make this border **7.00** inches also.

94 Under **Blocks in border** make **Horizontal** and **Vertical** both **2**.

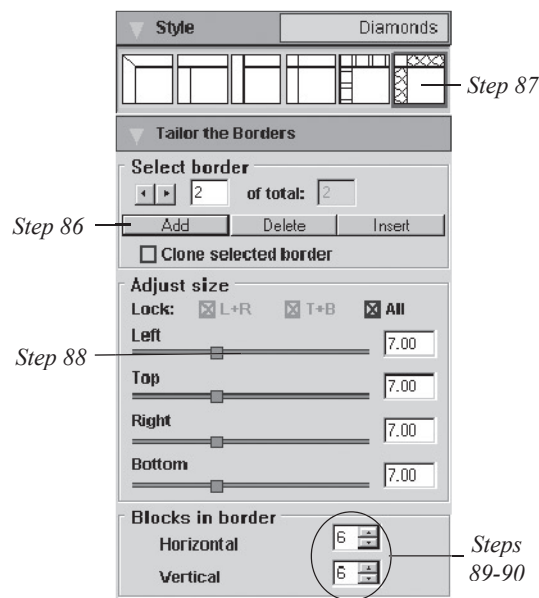
We've used the **Add** button many times now, and you know that it adds the new border to the outside edge of the quilt. If you decide you want to *insert* a border between two existing borders, you can.



Step 83 – Diamonds border style



Step 85

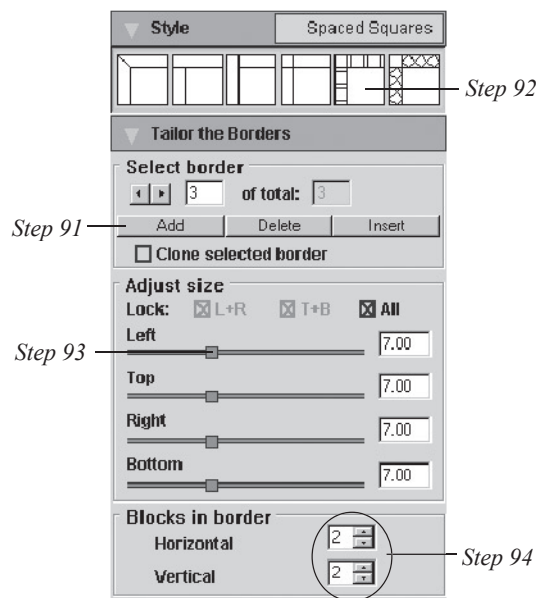


Step 86

Step 88

Step 87

Steps 89-90



Step 91

Step 93

Step 92

Step 94

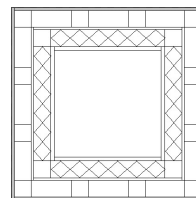
- 95 Click the **Insert** button. This will add a new border inside the previous border.
- 96 We'll make it match the style of the inner border.
- 97 Click **Long Vertical**.
- 98 Click to put a check in the **Clone selected border** box.
- 99 Click the **Add** button. Another *Long Vertical* border will be added to the outer edge of the quilt.



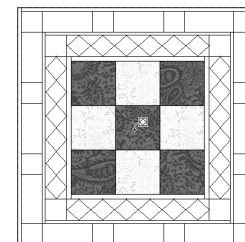
Step 95

Steps 98-99

- 100 Click the **Blocks** tab.
- 101 Click **Blocks in the Library**.
- 102 Scroll up or down until you see **Nine Patch** and click on it to display the blocks.

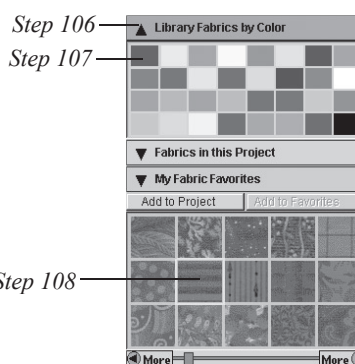


Quilt with all borders added



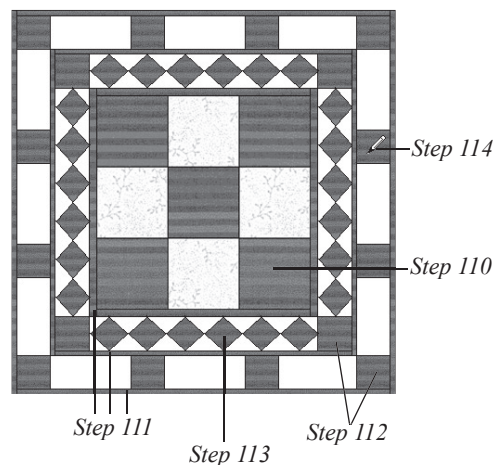
Step 104

- 103 Click on the first block – *9-Patch*.
- 104 Click on the center of the layout. This block will be our large medallion center.
- 105 Click the **Fabrics** tab. Let's give this layout a quick coloring.



- 106 Click **Library Fabrics by Color**.
- 107 Click the first dark red color chip. The dark red fabrics will display below.
- 108 Click on the middle fabric in the second column. It's a stripe.

- 109 Click the **Paint Patch** tool.
- 110 Click on each of the purple squares in the center of the layout.
- 111 **Ctrl** + click on all three narrow borders to color them with the same fabric.
- 112 **Ctrl** + click on the corner blocks in both of the wide borders.

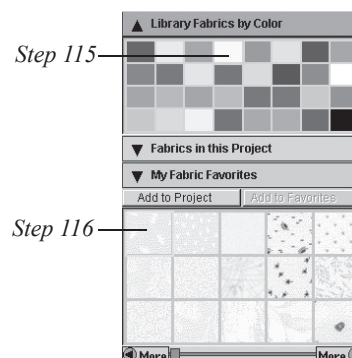


- 113 **Ctrl** + click on one of the diamonds in border 2.
- 114 **Ctrl** + click on one of the squares in border 4. Now we need a light color to add contrast to this quilt.

- 115 Click on the first color chip in the fourth column. It's a beige color.

- 116 Click on the first fabric to select it.

- 117 Click the **Paint Quilt** tool.



Step 117

- 118** Click on the light fabric in the center block to replace that fabric with our new fabric.
- 119** Click on any of the empty patches left in the layout to fill all the empty patches with fabric. The quilt should be completely colored with fabric now.

Whenever fabrics are used from the library, they automatically get added to the project. The new fabrics will appear at the end of the palette.

- 120** Click **Fabrics in this Project**.

- 121** Drag the slider under the fabric swatches at the bottom of the palette all the way to the right. You'll see the new fabrics just used in the quilt. If you like, you can sort these fabrics to the front of the palette.

- 122** Position the mouse cursor over the fabrics and right-click to display the context menu.

- 123** Click on **Sort Fabrics**. The *Sort Fabrics* dialog will display, and the fabric palette appears empty.

- 124** Drag the slider under the fabrics *in the dialog* all the way to the end.

- 125** Click on the striped fabric *in the dialog*. It will pop over into the palette.

- 126** Continue to click on fabrics in the dialog to sort them into the palette.

- 127** Click on 5 or 6 more fabrics to sort them to the palette. It is not necessary to sort all the fabrics manually.

- 128** Click the **Close** button. The remaining fabrics will be placed after the sorted ones.

You can also delete fabrics from the project if you want. Since many of the fabrics that come with a new project are used in blocks from the library, it is not recommended that you delete fabrics, but of course you can if you would like.

- 129** Position the mouse cursor over the fabrics and right-click to display the context menu. You can see the **Delete** option here. Clicking on **Delete** will delete the currently selected fabric from the project. We don't want to delete any fabrics from this project.

- 130** Press the **Esc** key on the keyboard to close the context menu without doing anything.

Let's save the project.

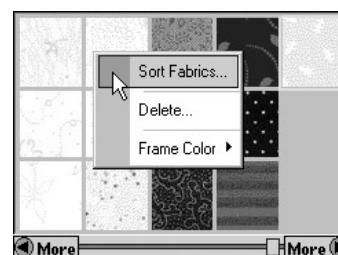
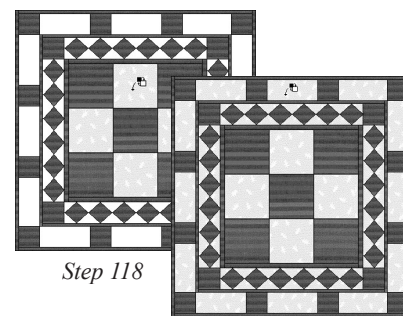
- 131** Click the **Save** tool on the main menu bar. The *Save As* dialog box displays.

- 132** If you need to, use the down arrow to navigate to the *My Documents* folder and double-click on it so that the **Save in:** box displays *My Documents*.

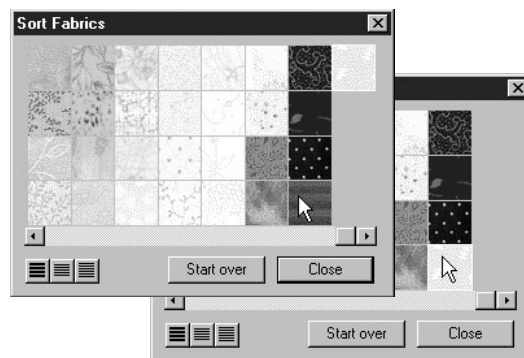
- 133** In the **File name:** box, type **Lesson 5 Variation**.

- 134** Click the **Save** button. You'll see the name of the file, *Lesson 5 Variation*, on the title bar at the top of the screen.

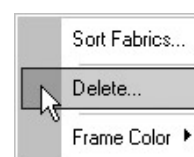
It's been a long lesson, and we're almost done. Let's visit the **Print** tab one last time.



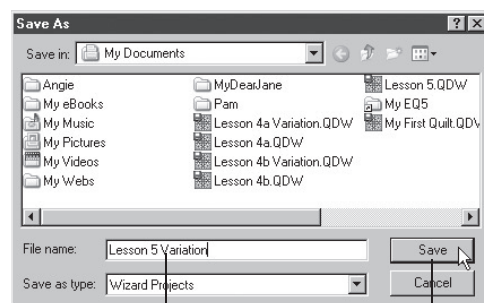
Steps 122-123



Steps 125-127



Step 129



Step 133

Step 134

135 Click the **Print** tab.

136 Click on the large *9-Patch* block in the center of the quilt.

You'll remember that this center block is 39" because we selected *Twin* for the mattress size. The standard twin bed mattress is 39" by 75". You can visualize this large block covering the top width of a twin bed and the borders creating the "drop" or the part of the quilt that hangs down the sides of the bed.

137 Click **Print Template Pattern** on the palette.

138 Click to check **Get size from quilt** if it is not checked already.

139 Click the **Preview** button.

Oh my goodness! Our print preview shows 6 pages! But let's think about it a bit more. There is only one template piece needed to construct this block because all the pieces are the same size and shape. Since our block is 39", each square needs to be 13" plus the seam allowance (3 times 13 equals 39). Since the paper used in most home printers is 8 1/2" by 11", of course this means that the pattern is required to tile across several pages. When a pattern is tiled, Quilt Design Wizard™ prints a dashed line as a guide for taping the pages together, giving you a complete pattern in the appropriate size. Just because you can print a template pattern this large doesn't mean that it's the best method for cutting your pattern. Rotary cutting is a better choice here.

140 Click the **Close** button to close the preview without printing.

141 Click **Print Rotary Cutting Pattern**.

142 Click to check **Get size from quilt** if it is not checked already.

143 Click the **Preview** button.

144 Click the **Print** button.

You can see in the nice one-page printout that we can easily rotary cut 9 squares – 5 in the dark fabric and 4 in the light fabric. The squares are 13 1/2". This allows a 1/4 inch seam allowance around the entire patch. Using the rotary cutting pattern here is our best option.

145 Click **File** on the main menu.

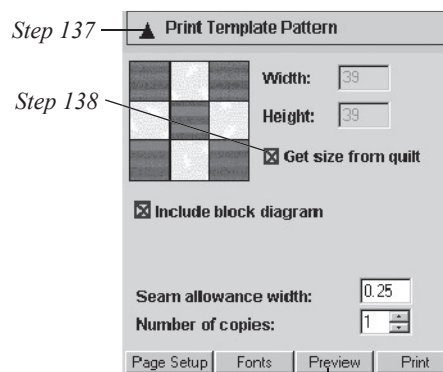
146 Click **Exit**. If you see a message asking if you want to save changes to your project, click **Yes**. Quilt Design Wizard™ will close.

CONGRATULATIONS! You've completed the lesson portion of this manual. You are now prepared to venture out on your own, designing your own quilts. You select the sizes, border styles, blocks and fabrics that suit your taste. You'll have fun exploring all the different libraries loaded with blocks and fabrics. We hope these lessons have taught you the basics of using the software and given you a spark of inspiration for other project ideas.

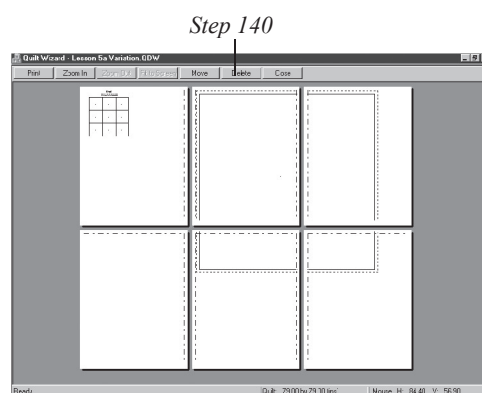
If you feel you need more help, watch the tutorial videos. Each tab of the program contains a different menu of help videos. Watch them all. It's so easy to learn by watching. If you still need help, consult the *Reference* section of this manual for the topic or visit the **Learn** tab.

Finally, visit our web site at: www.quilt-design-wizard.com. You'll find contact information, technical support, project ideas and downloadable projects with free blocks, fabrics and quilts.

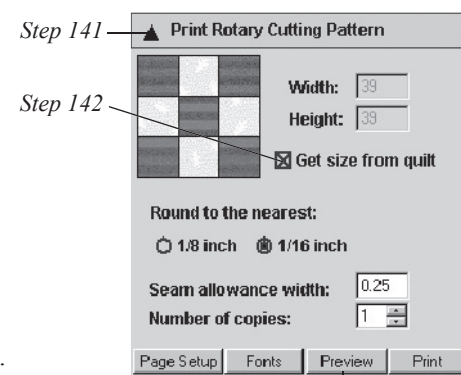
Thanks again for choosing Quilt Design Wizard™ and happy quilting!



Step 139



Print preview for 9-patch block.



Step 143

Step 144

