

# Lesson 1

## Designing Your First Quilt

In this lesson we'll learn the basics of designing a quilt and printing it. Let's get started.

- 1 Double-click the **Quilt Wizard** icon on your desktop to start the program.
- 2 Click the **Layout** tab along the top of the screen.
- 3 Click the down-pointing black arrow next to the word **Style**. This will display the style options.
- 4 Click on the first image. It looks like a 3 x 3 horizontal set quilt.
- 5 Click the down-pointing black arrow next to the words **Mattress Size**. This will display the size options. The Style control automatically closes when the Mattress Size opens.
- 6 Since this is our first quilt, we'll start small. Click **Wall**. Notice that your selection appears in the display window of the control. The quilt on the design wall will update as you make each selection.
- 7 Click the down-pointing black arrow next to the word **Sashing**. Sashing is turned off here. Since we don't want sashing, we'll just close the control. Click the up-pointing black arrow next to the word **Sashing** to close the control.
- 8 Click the down-pointing black arrow next to the words **Block Size**.
- 9 Click **9 inches** for the block size.

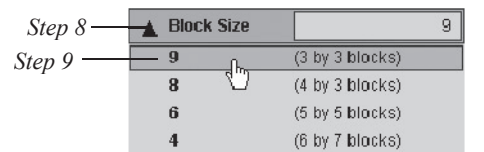
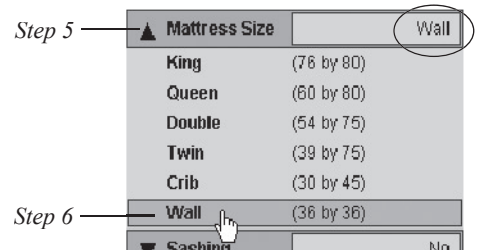
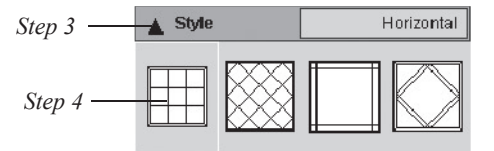
Notice the overall size of the quilt appears on the bottom of the screen. Your quilt is 27 inches by 27 inches, but we have not added borders yet. Let's do it.

- 10 Click the **Borders** tab along the top of the screen.
- 11 Click the **Add** button to add a border. You'll see your quilt layout with a 1 inch mitered border now.
- 12 Position the mouse cursor over the small images at the top of the palette to display the names of the border styles.
- 13 Click on **Long Vertical**. It's the third image. The border on the quilt will change to this style.
- 14 Click to put a check in the **Clone selected border** box.
- 15 Click the **Add** button. This duplicates the border.
- 16 Under **Adjust size**, click the box in front of **All** (if it is not already checked).
- 17 Point to one of the slider bars under **Adjust Size**. The cursor will change to a small hand. Hold down the left mouse button and drag the slider to the right. Or click directly on the scroll bar to the right of the box to increase the size. You'll see a small plus sign (+) indicating that the border is getting bigger. Notice all 4 sliders adjust at the same time. Make the border width **3.00** inches on this second border.



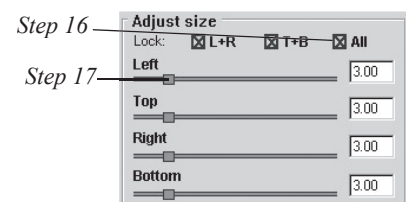
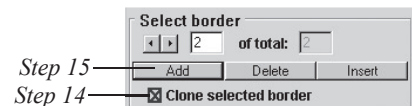
Quilt Wizard

Step 1



Quilt: 27.00 by 27.00 (ins)

Overall size of quilt is 27 inches by 27 inches.



- 18 Click the **Add** button. Since Clone is still checked, we've duplicated our wide border.
- 19 Make this border 0.25 in size and click the mitered style. This represents the binding.

Again you'll want to make note of the quilt size. Our quilt size is 35.50 inches by 35.50 inches – a very nice wall-size quilt. We've completed the layout and borders. It is ready for blocks!

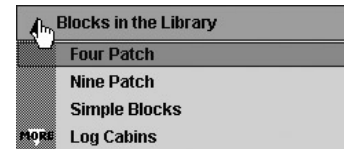
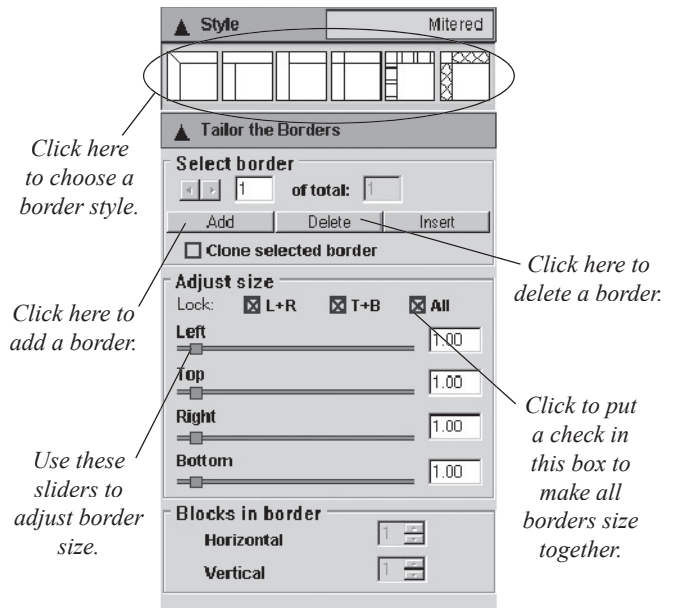
- 20 Click the **Blocks** tab along the top of the screen.
- 21 Click the down-pointing black arrow next to **Blocks in the Library**. This will display the list of block categories.
- 22 Position the cursor over the words **Nine Patch** and click. The Nine Patch blocks display at the bottom of the palette. Place the mouse cursor over a block to see the name of the block. Find the block named **Shoo Fly**.

- 23 Click on the **Shoo Fly** block. You'll notice a frame around the block. This indicates the selected block.

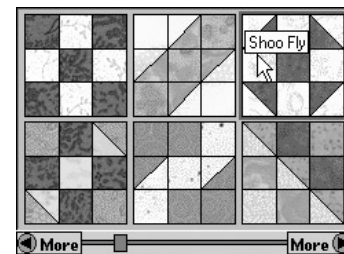
Take a look at the block tools along the top of the palette. These are the tools you'll use to set, remove, rotate, and flip pieced blocks on your quilt. The **Set** tool should already be selected. If it is not, click directly on the tool to select it.

- 24 Click anywhere on the center of the layout. Voilà! You'll see the block pop into your quilt layout.
- 25 Click in all nine blocks in your quilt.
- 26 Let's look for another block. Use the scroll bar under the blocks or click the **More** button on the right end of the scroll bar to see more blocks. We're looking for the block named **Swamp Patch**.

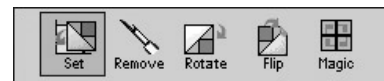
- 27 Click on the **Swamp Patch** block to select it.



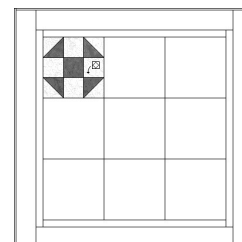
Step 21



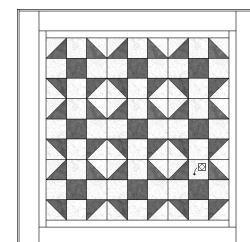
Step 23



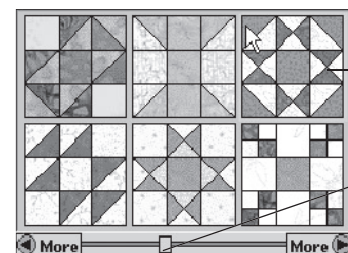
Block tools



Step 24



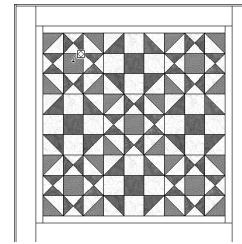
Step 25



Step 27

Step 26

- 28 Press and hold the **Alt** key on the keyboard and click in the upper-left block on your quilt. Holding **Alt** will set blocks in *alternating* locations in the quilt all at once. The **Shoo Fly** blocks are replaced with the **Swamp Patch** blocks in all the alternating spots.



Step 28

We've finished setting blocks into our layout. Let's select new fabrics for the blocks and color the borders.

- 29 Click the **Fabrics** tab along the top of the screen.

You'll notice many fabrics appearing at the bottom of the palette. These are the default fabrics used in Quilt Design Wizard™. All the library blocks are colored with these fabrics. But there are hundreds of other fabrics for you to choose from in the library. Let's get some new fabrics.

- 30 Click the down-pointing black arrow next to **Library Fabrics by Color**. This will display an image of small color chips.

- 31 Click on the second color chip in the first column – a red color. When you click on a color chip, you'll see a collection of fabrics in that color.

- 32 Click on the first red fabric at the bottom of the palette. We've selected a fabric, now we need a tool.

- 33 Click the **Paint Block** tool at the top of the palette.

- 34 Position the mouse over the block in the upper-left corner. Click on one of the dark red triangle patches. This will repaint all of the matching patches in this block to the brighter red.

- 35 Recolor all the **Swamp Patch** blocks in the same way.

**Tip**

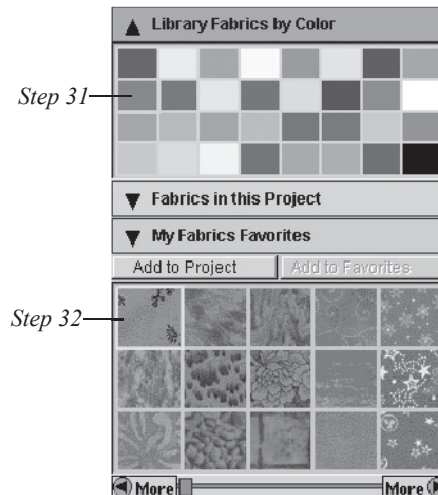
If you accidentally click in the wrong location, click **Edit** on the main menu bar and then click **Undo**.

- 36 Let's use this fabric for one of the borders. Click on all four sides of the second border, the wide one, to color it with the same red fabric.

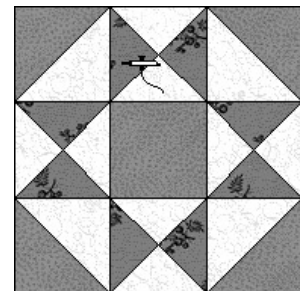
- 37 Click on the dark blue color chip under **Library Fabrics by Color** (it's in the second row, six columns from the left). A collection of blue fabrics will display.

- 38 Click the first blue fabric at the bottom of the palette.

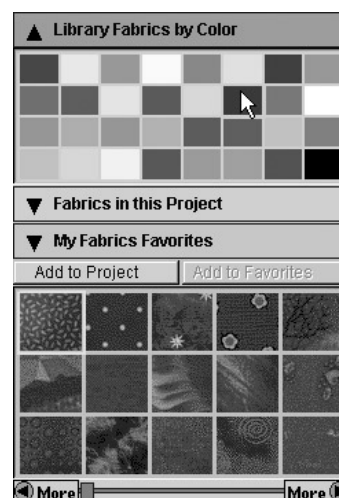
- 39 Position the mouse over the **Shoo Fly** block in the center of the top row. Click on the center square patch. This will repaint all the matching fabric in this block to blue.



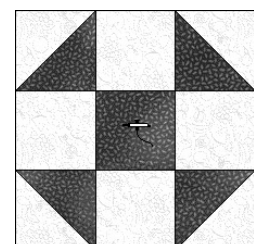
Step 33



Step 34



Step 38



Step 39

- 40 Continue to recolor the other three **Shoo Fly** blocks in the same way.

Let's use this fabric for the narrow border and the binding. Since these borders are still uncolored, we can recolor all of them at once using the **Paint Quilt** tool. This tool paints all matching fabric patches in the quilt at once.

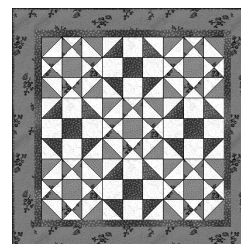
- 41 Click the **Paint Quilt** tool at the top of the palette.
- 42 Click on one side of the first border. All the sides of both borders color with the same blue fabric.
- 43 Click on the white color chip under **Library Fabrics by Color** to display the collection of white fabrics.
- 44 Click the first white fabric.
- 45 Click on the light background patch in any of the blocks to recolor all the blocks at once with a new background fabric.
- 46 Click on the yellow color chip under **Library Fabrics by Color** to display the collection of yellow fabrics.
- 47 Click the first yellow fabric.
- 48 Position the mouse over the block in the upper-left corner. Click on the center square patch. The yellow fabric replaces the bright blue in all patches of the quilt.

Our quilt is complete! Let's put a few design notes with it.

- 49 Position the cursor over the quilt and right-click to display the context menu.
- 50 Click **Notecard**. A notecard displays.
- 51 Type a name for your quilt in the Name field.
- 52 Press the keyboard **Tab** key twice to move the cursor to the Notes field. Type as many notes as you like.
- 53 Click the **X** button to close the notecard.
- 54 Click the **Print** tab along the top of the screen.
- 55 Click the down-pointing black arrow next to **Print Quilt**. This will display different printing options in the palette.
- 56 Click **Showing fabrics**.

**Tip** \_\_\_\_\_  
Showing fabrics prints in color. Outline drawing prints an uncolored line drawing like a coloring book page.

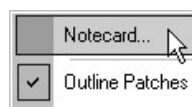
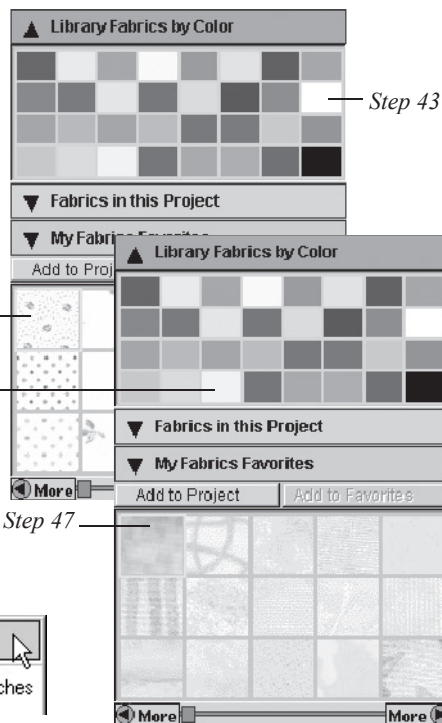
- 57 Click the **Preview** button.



All borders have been colored.

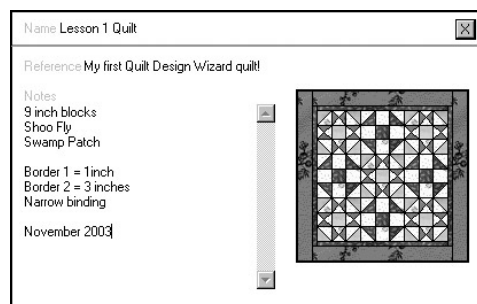


Step 41

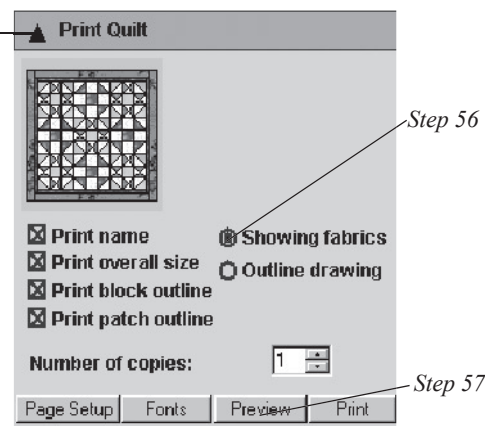


Steps 49-50

Steps 51-52



Step 55



Step 56

Step 57

**58** Click the **Print** button. Your quilt will print.

Before we end this lesson, let's save this quilt in case we want to open it again at another time.

**59** Click the **Save** tool on the main toolbar, or click **File** on the main menu and click **Save**. The *Save As* dialog box will appear.

When you save your quilt, you're writing a file to your computer's hard drive. This file can then be opened at a later time without losing any of your work. You'll need to keep track of *where* you save your files. The *My Documents* folder is a good place to store your quilt files.

**60** Look at the **Save in:** box. This displays the folder name where your file will be saved. If necessary, click the box's down arrow to navigate to the **My Documents** folder. When you double-click on the **My Documents** folder, its name will display in the **Save in:** box.

**61** Look at the **File name:** box. This is where you type the name of your file. It may say **Untitled** because we have not named the file yet.

**62** Type the name **My First Quilt** in the box.

**63** Click the **Save** button. Your quilt is now saved. You should see the name, **My First Quilt**, on the top title bar.



### Tip

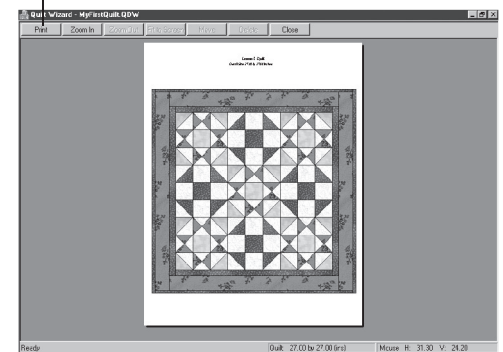
- You can add a new folder within the **My Documents** folder by clicking on the **Create New Folder** icon. Name the new folder **My Quilt Wizard Projects** and save your projects there. This is a good way to keep your files organized.
- The 3-letter file extension for Quilt Design Wizard™ projects is **QDW**. Whenever you save a file, this extension will automatically be added to your filename. If you ever need to search for your project files, be sure to remember that these 3 characters will always appear at the end of the filenames. See the *Reference* section on *Managing Your Project Files* for more help.

**64** We're ready to exit the program. Click **File** on the main menu.

**65** Click **Exit**. Quilt Design Wizard™ will close.

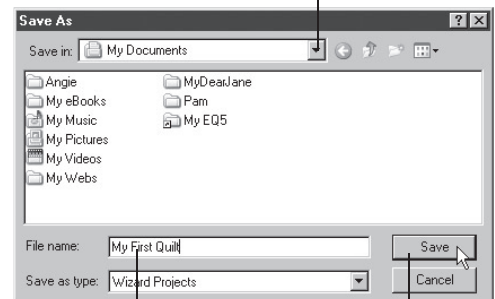
Congratulations! You've just completed Lesson 1. You've learned how to create a layout, add borders, set blocks, color the quilt and print it. You've learned many things, but there's so much more. In Lesson 2, we'll print the patterns to make the quilt and explore some of the general quilting information found in the program.

Step 58



Print Preview of quilt

Step 60

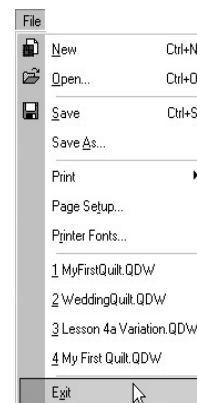


Step 62

Step 63

**Quilt Wizard - My First Quilt.QDW**

The project title is displayed at the top of the screen.



Steps 64-65