

## Tools on the Blocks Tab

### Setting Blocks

Once you have decided on your quilt layout you can start putting blocks in your quilt.

- 1 Click the **Blocks** tab.
- 2 Click the **Set** tool.
- 3 Click **Blocks in the Library**.
- 4 Click on a block in the palette that you would like to set in your quilt.
- 5 Point your mouse cursor to a block space in the layout and click. The selected block will pop into the quilt.



#### Tip

- To remove a block from the layout, immediately after you've set it, choose **Edit > Undo**.
- **Ctrl + click** to fill **all** the blocks in your quilt. **Alt + click** to fill **alternating** blocks in your quilt.
- To replace one block with another, just set one block on top of the other.

### Removing Blocks

Once you've set a block into the layout, you can either replace the block by setting another one over it, or you can remove it.

- 1 Click the **Remove** tool.
- 2 Place your cursor over the block you want to remove and click. The block will return to an empty white space.

### Rotating Blocks

- 1 Click the **Rotate** tool.
- 2 Place your cursor over a block on your quilt and click. The block rotates 90 degrees every time you click.

If you click too quickly, your click may not register.

### Flipping Blocks

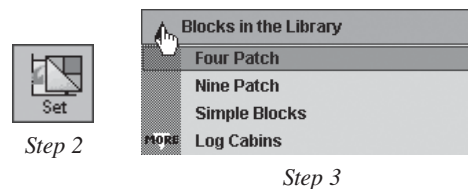
- 1 Click the **Flip** tool.
- 2 Place your cursor over a block on your quilt and click. The block will horizontally flip (from left to right).

If you click too quickly, your click may not register.



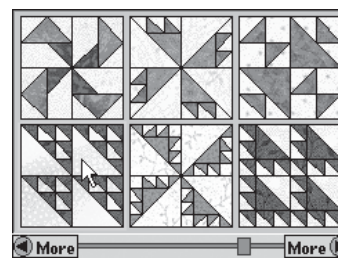
#### Tip

- To rotate or flip alternating blocks, hold down the **Alt** key and click. To rotate or flip all blocks, hold down the **Ctrl** key and click.
- If your block is symmetrical (looks the same on each side) you will not be able to notice a rotation or flip.

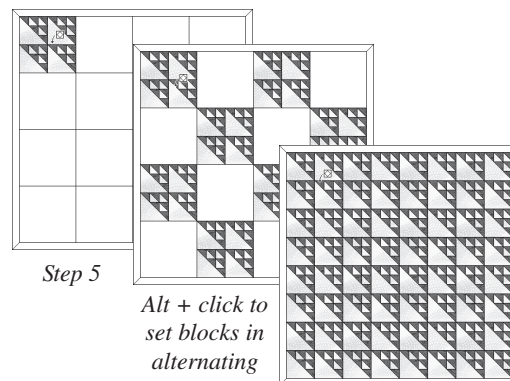


Step 2

Step 3



Step 4



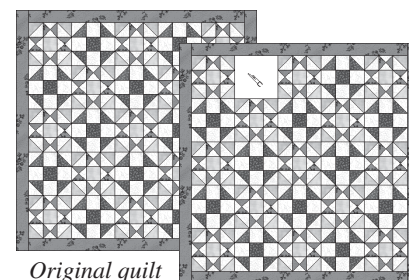
Step 5

Alt + click to set blocks in alternating positions.

Ctrl + click to set blocks in all positions.



Step 1

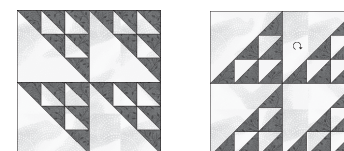


Original quilt

Step 2-Removed block



Step 1

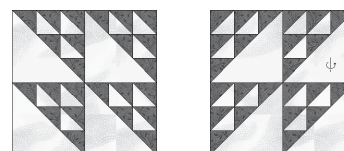


Original block

Step 2-Rotated block



Step 1



Original block

Step 2-Flipped block

## Magic Tool

The **Magic** tool automates flipping and rotation on all blocks simultaneously.

The **Magic** tool performs best with a horizontal layout with no sashing, as in the example shown. Begin with a horizontal layout. (*Make sure to set the sashing to zero and choose blocks that are not the same on all sides.*)

- 1 Click the **Set** tool.
- 2 Click an asymmetric block (not the same on all sides) in the palette.
- 3 Point your mouse cursor to a block space in the layout. **Ctrl** + click on the layout. (*You can use more than one block design in your quilt and still use the **Magic** tool.*)
- 4 Click the **Magic** tool.
- 5 Position your cursor over a block in the quilt.
- 6 **Ctrl** + click on the layout. There are 16 different symmetries built into the tool, so you can click 16 times to see all the variations.



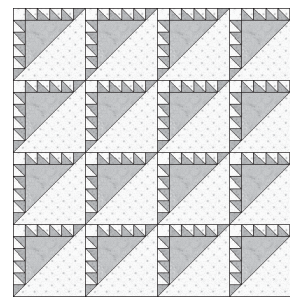
### Tip

The **Ctrl** key must always be used with the **Magic** tool.

## Blocks in the Library

Quilt Design Wizard™ comes with over 200 quilt block patterns. Since you can print the block patterns in any size, it's like transforming your home printer into a pattern maker. The actual cost of a pattern is a penny or less! What's even better, all the blocks are rotary cuttable.

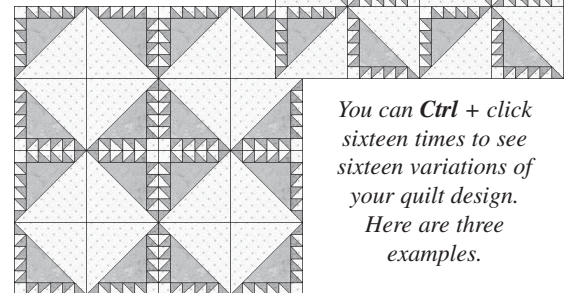
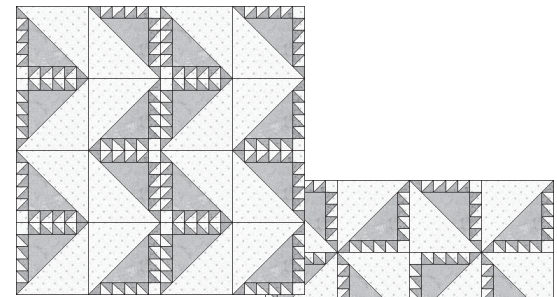
- 1 On the **Blocks** tab, click on the down-pointing arrow next to **Blocks in the Library**. Several different categories of blocks appear.
- 2 Click directly on a category to see the blocks displayed at the bottom of the palette.
- 3 Click **More** or drag the slider to view all the blocks.
- 4 To change categories, click on the **More** arrow under **Blocks in the Library**.
- 5 Click on any block to select it. You will know it is selected because a frame surrounds it.



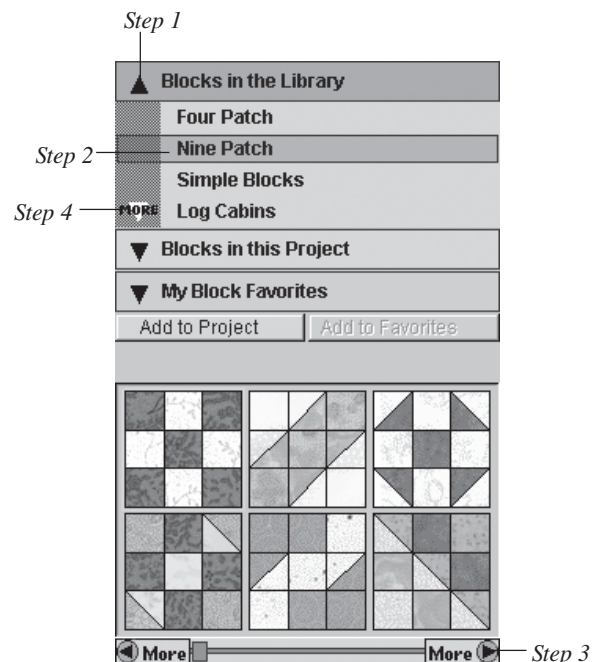
Step 3



Step 4



*You can **Ctrl** + click sixteen times to see sixteen variations of your quilt design. Here are three examples.*



## Blocks in this Project

Whenever you set a block into the quilt layout, it automatically gets added to your project. As you browse through the blocks in the library, you may see one that you'd like to use in the quilt, but you don't want to set it immediately. You can click the **Add to Project** button to add the block to your project without setting it into the quilt layout.

After you have saved your quilt, you will find additional colorings of the original library block. These blocks represent the newly colored blocks making up your quilt design.

To view the blocks in your project, click the down-pointing arrow next to **Blocks in this Project**.



### Tip

- The selected block has a frame around it. If you have trouble seeing which block is the selected one, right-click and point to frame color, then click to select a darker color for the frame.
- Whenever you leave the **Blocks** tab and return, the blocks at the bottom of the palette will be the **Blocks in this Project**.
- You can sort and delete blocks from the project if you like.

## My Block Favorites

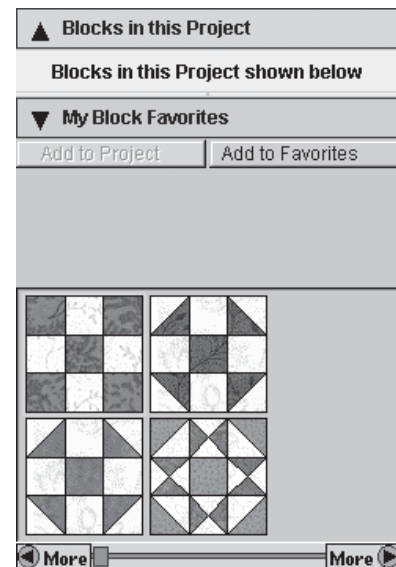
As you browse through the blocks in the library, you may find certain blocks that are your favorites that you tend to use over and over in your designs. You can click the **Add to Favorites** button to add the block to **My Block Favorites**. This gives you fast and easy access to your favorite blocks without scrolling through the library each time. Another use for this option is to add new blocks to the program by downloading projects from the Quilt Design Wizard™ web site. After you've downloaded the project and opened it, you can copy any blocks from the project to **My Block Favorites**. These blocks will appear whenever you use Quilt Design Wizard™ unless you decide to delete them.

To view the blocks, click the down-pointing arrow next to **My Block Favorites**.

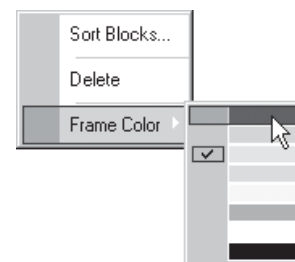


### Tip

You can sort and delete blocks from **My Block Favorites** if you like.



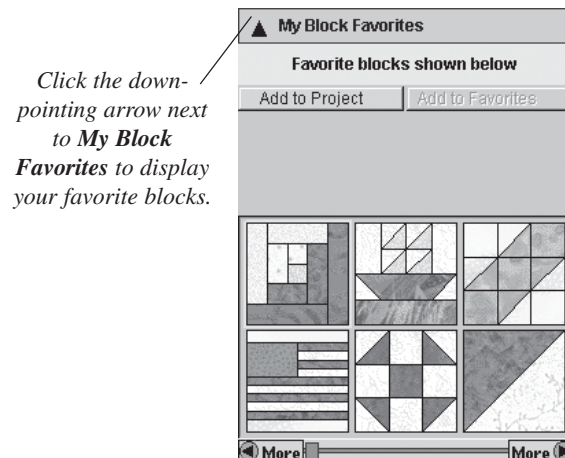
Blocks that have been set in the quilt layout are displayed when clicking **Blocks in this Project**.



Right-click and point to a new frame color to change it.



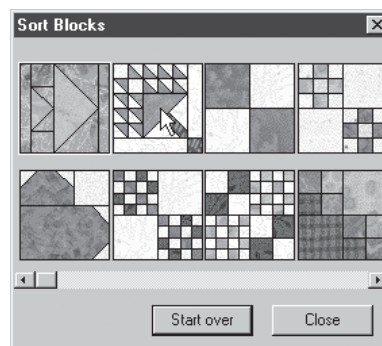
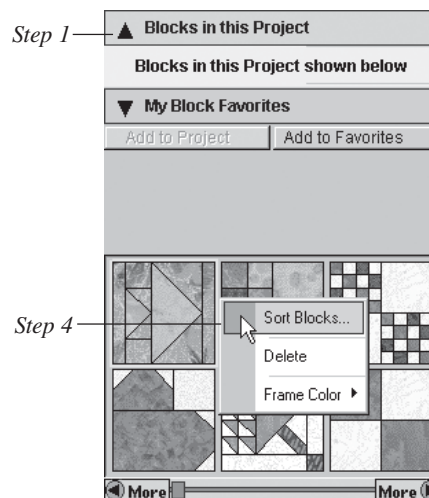
You can click the **Add to Favorites** button to add the block to **My Block Favorites**.



Click the down-pointing arrow next to **My Block Favorites** to display your favorite blocks.

## Sorting Blocks

- 1 Click **Blocks in this Project** or **My Block Favorites**.
- 2 Position the mouse cursor over the blocks.
- 3 Right-click to display the context menu.
- 4 Click **Sort Blocks**.
- 5 Choose your block by positioning your cursor over the block in the dialog box and clicking. The block will *disappear*, implying that it has been sorted.
- 6 Continue clicking on the blocks in the dialog box in the order you want them to appear. Click the **Start Over** button if you make a mistake.
- 7 Click the **Close** button if you are finished. Quilt Design Wizard™ will place the remaining blocks behind the ones you have sorted.



## Deleting Blocks

- 1 Click **Blocks in this Project** or **My Block Favorites**.
- 2 Position the mouse cursor over the blocks.
- 3 Right-click to display the context menu.
- 4 Click **Delete**.
- 5 You will receive a message confirming you want to delete the block. If the block is used in the quilt, it will be removed from the quilt design. If the block is removed from **My Block Favorites**, it will no longer appear with the favorites, making more space for other favorites.

