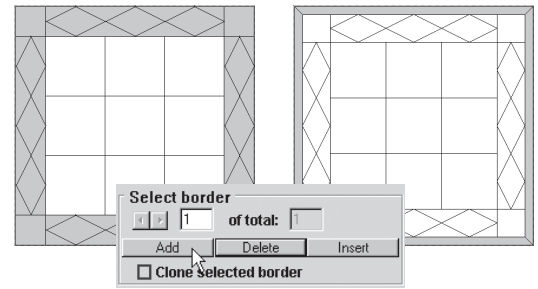


## Adding, Deleting, or Inserting a Border

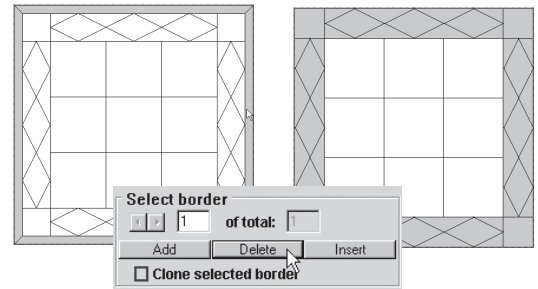
- 1 Click the **Borders** tab. The Borders palette appears.
- 2 To add a border – click the **Add** button on the Borders palette. A blank, mitered border with sides each equal to 1.00" will be added around the outside of your quilt.

To delete a border – position your cursor directly over the quilt, and click on the border you wish to delete. The border turns gray showing it is selected. Click the **Delete** button on the Borders palette.

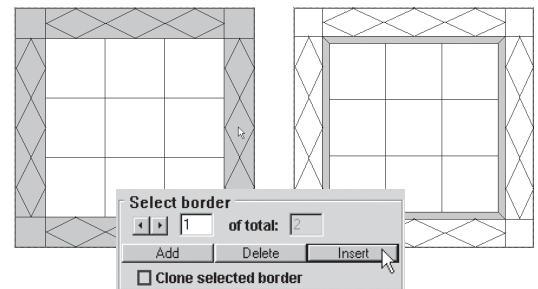
To insert a border – position your cursor directly over the quilt, and click on the border you wish to insert another border *inside of*. Click the **Insert** button on the Borders palette. A blank, mitered border with sides each equal to 1.00" will be inserted in front of the border you selected.



*Add border*



*Delete border*



*Insert border*

## Cloning a Border

- 1 Click the **Borders** tab.
- 2 Position your cursor directly over the quilt, and click the border you wish to clone.
- 3 In **Select border** on the Borders palette, click to place a check next to the words **Clone selected border**.
- 4 Click the **Add** button to put a copy of the selected border around the outside of the quilt, or click the **Insert** button to insert a copy just before the selected border. A blank border with the same settings as the cloned border is added to or inserted in your quilt.



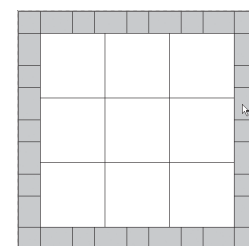
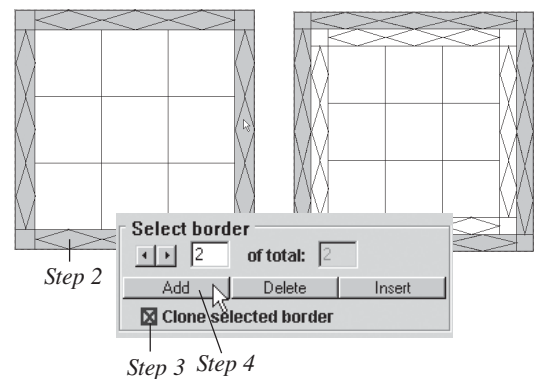
### Tip

Remember, if you clone a border, you will need to recolor or add blocks to it. Quilt Design Wizard™ considers the cloned border a “new” border.

## Sizing Borders Quickly

You can change all sides of a border at once using the lock dimensions feature. Begin with a quilt layout with at least one border on your screen.

- 1 Click the **Borders** tab.
- 2 Position your cursor directly over the quilt, and click the border you wish to change. The border turns gray, showing it is selected.



3 In **Adjust size** on the Borders palette, the lock options are as follows:

**L+R** will lock the left and right sides of the border.

**T+B** will lock the top and bottom sides of the border.

**All** will lock all the sides of the border.

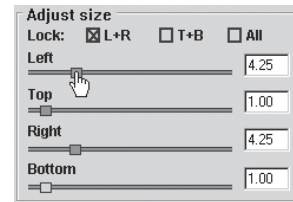
Click to place a check next to the option(s) you would like to lock.

4 In **Adjust size**, drag a slider bar to make the locked borders the size you want.

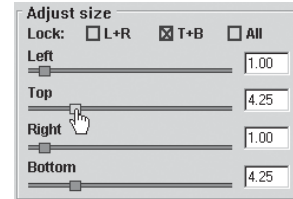


**Tip**

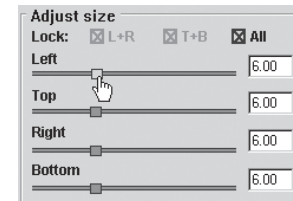
A check next to **All** is different from having checks next to **L+R** and **T+B**. When you have checks next to **L+R** and **T+B**, opposing sides of the border remain the same size, but **L+R** and **T+B** are independent.



*L+R will lock the left and right sides of the border.*



*T+B will lock the top and bottom sides of the border.*



*All will lock all the sides of the border.*

## Border Styles

### Mitered

This border style has long strips of fabric with mitered corners. You cannot place pieced blocks in mitered borders.

### Long Horizontal

This border style has long strips horizontally with shorter vertical strips. You can place blocks in each strip.

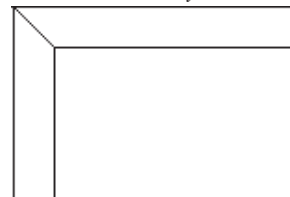
### Long Vertical

This border style has long strips vertically with shorter horizontal strips. You can place blocks in each strip.

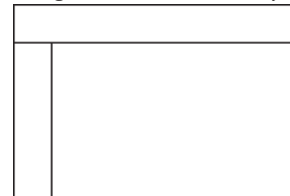
### Corner Blocks

This border style has blocks in each corner with long strips along each side of the quilt. You can place blocks in each strip and corner.

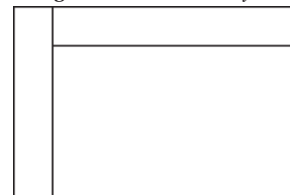
*Mitered border style*



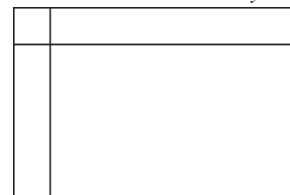
*Long Horizontal border style*



*Long Vertical border style*



*Corner Blocks border style*



**Spaced Squares**

This border style divides the border strips with equally spaced squares. Use the **Horizontal** and **Vertical** controls to set the number of squares. The distance between the squares will vary as the number of squares is adjusted. As the number of squares increases, the squares will eventually become rectangles. You can place blocks in each corner and in each square.

**Diamonds**

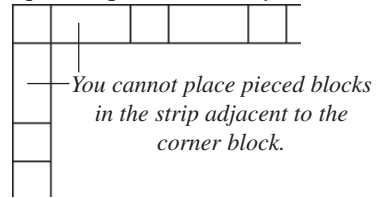
This border style consists of diamond-shaped blocks. Use the **Horizontal** and **Vertical** controls to set the number of diamonds you want. Do not include corner blocks in the number you enter. The corner blocks will not be diamonds. You can place pieced blocks in each diamond location and the corner blocks.

**Tip** \_\_\_\_\_

The width and height of a diamond block from the border refer to the horizontal and vertical dimensions of the block. To create perfect squares instead of diamonds, remember that the width of the border multiplied by the number of diamonds equals the length of the border.



*Spaced Squares border style*



*Diamonds border style*

