

## Layout Tab

The first four controls on the layout tab are designed to help you quickly build a quilt layout. These controls help you set up a layout with the appropriate number and size for blocks and sashing depending on the overall size of the quilt you want to make.

There are a few basics tips you'll need to know to help you understand how to use them.

- The most natural order for using them is from top to bottom. The style and overall mattress size will determine the sizes available for sashing and blocks.
- If you decide to go back *up* to a control, be sure to revisit all the controls *below* that one, even if you've already used them because the options there may have changed.
- Once you've used them, making any other changes to your layout, like tailoring, adding borders, or setting blocks, will prevent you from using them again unless you're willing to start over completely designing your quilt.

It's a good idea to spend some time just clicking around on this tab to see all the different combinations that are available. If you prefer to build a layout from scratch instead of using the help of the wizard, you can do that too.

## Creating a Layout with the Wizard Controls

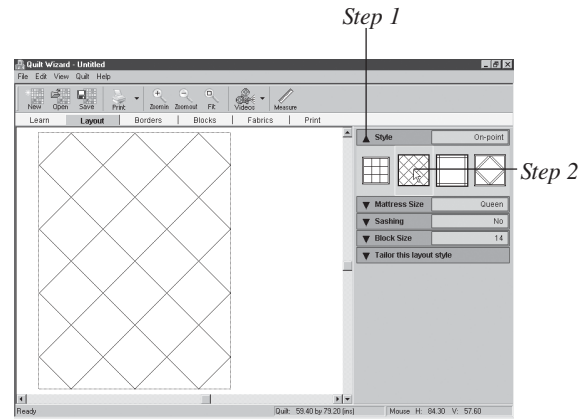
- 1 Click the down-pointing arrow next to **Style** to display the style options.
- 2 Click on any style. When you click on a style, the design wall will display the layout and the style name will appear in the control.
- 3 Click the down-pointing arrow next to **Mattress Size**. Click on any size.

The wizard attempts to make the center of your quilt design *approximately* the size you've chosen here. This is so the center part of your quilt fits on the *top* of the mattress.

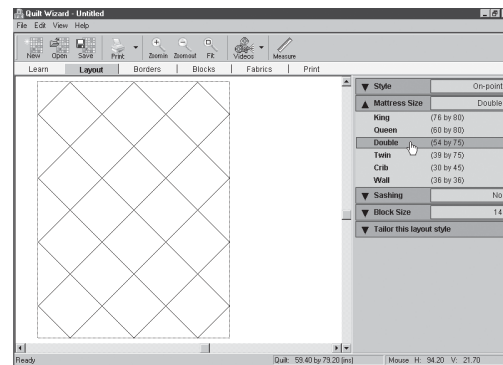
- 4 Click the down pointing arrow next to Sashing. Click on **Yes** or **No**. If you choose Yes to add sashing, then the wizard will automatically size it for you.

▼ Style	Horizontal
▼ Mattress Size	Queen
▼ Sashing	No
▼ Block Size	12
▼ Tailor this layout style	

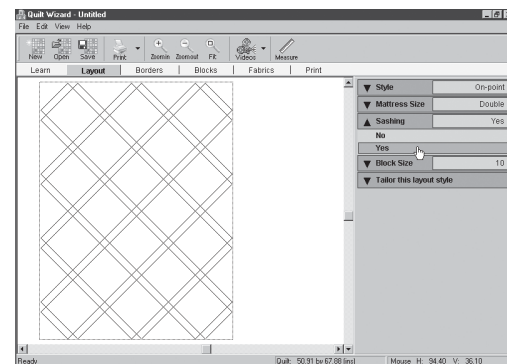
Layout Controls



When you click on a style, the design wall will display the layout and the style name will appear in the control.



Step 3



Step 4

- Click the down-pointing arrow next to **Block Size**. Click on any block size. If the block size you want does not appear, you'll need to use **Tailor this layout style** to customize the block size.



**Tip**

- The overall size of your quilt will appear on the status bar for you. Keep your eye on this as you design. Remember the layout tab builds the center part of your quilt layout.
- Click the down-pointing arrows to open a control. Click the up-pointing arrow to close it, or just open another control to close the current one.

## Creating a Layout from Scratch

If you prefer to build a layout yourself, you can. It's very easy.

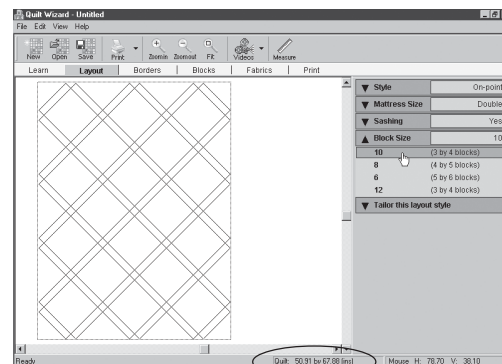
- Click the down-pointing arrow next to **Style** to display the style options.
- Click on **Horizontal** or **On-point**. The design wall will display the layout and the style name will appear in the control. This will be the basic layout, and it's ready for you to tailor.
- Click the down-pointing arrow next to **Tailor this layout style**. The options that appear here depend on the layout style selected.
- Click the up or down arrows to change the number of blocks horizontally and vertically.
- Drag the sliders to the right or left to change the horizontal and vertical size of all the blocks at once. Horizontal layouts can have a size control for both width and height. On-point blocks are always square, same width and height, and are tipped 45 degrees to appear as diamonds.
- To change the sashing size, drag the sliders to the right or left. For no sashing, drag the slider to the left to zero.
- Click to check or uncheck the sash border option. A sash border is sashing around the outer edge of the layout.

## About the Warning Arrows

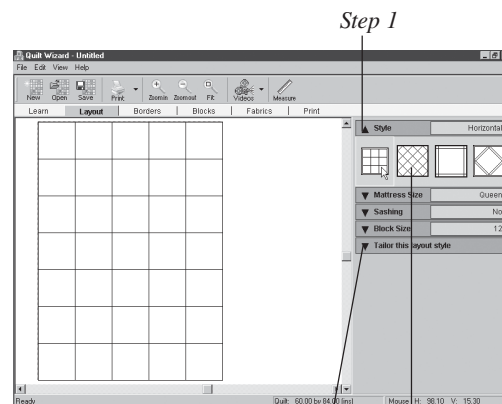
If the down-pointing arrows turn yellow-striped, it is a warning. It's a warning to you that the layout has been modified in some way. The word **Modified** also appears in the display.

Warning arrows appear when:

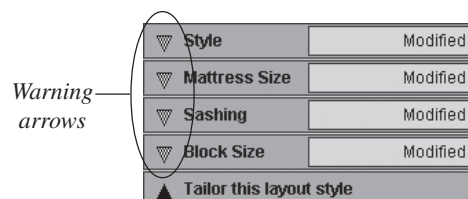
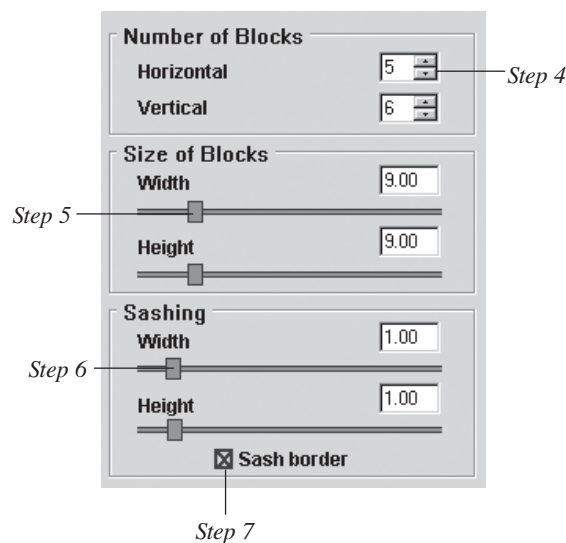
- Tailor this layout style** has been used to alter the layout.
- A project has been opened.
- The newly created layout has had borders added.
- The newly created layout has had blocks or fabrics set into it.



Step 5  
Overall size appears here.



Step 1  
Step 2  
Step 3



When you click on a control with a warning arrow, you'll see a cautionary message letting you make the final decision about starting over on your layout.

## Modifying an Existing Quilt Layout

If you open an existing project and want to modify the layout without losing all the information already in the quilt, use **Tailor this layout style**. Please remember there is only one quilt per project. If you make changes to an existing quilt, your new quilt, with its changes, will be the one saved in the project.

- 1 From any tab, click the **Open** tool and open an existing project.
- 2 Click the **Layout** tab. The top four controls will display warning arrows and the word **Modified**.
- 3 Click the down-pointing arrow next to **Tailor this layout style**. This control does not have a warning arrow. This control will let you make adjustments to your quilt without losing the blocks, fabrics, or borders.
- 4 Use any of the controls to change the number of blocks, block size or sashing size. Note the change in the overall quilt size on the status bar.

If you add or delete blocks horizontally or vertically, Quilt Design Wizard™ will do its best to fill out the layout. You'll need to revisit the **Blocks** tab and the **Fabrics** tab after tailoring your layout to finalize your design.



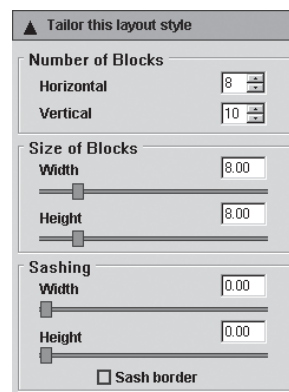
When you click on a control with a warning arrow, you will see a cautionary message.



Step 1

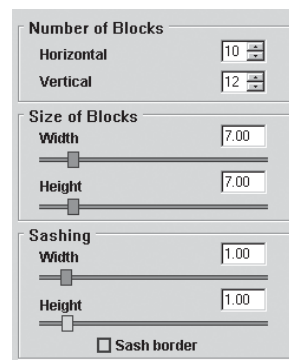
▼ Style	Modified
▼ Mattress Size	Modified
▼ Sashing	Modified
▼ Block Size	Modified

Step 2



Quilt: 66.00 by 82.00 (ins)

Step 3



Quilt: 81.00 by 97.00 (ins)

Step 4