

R E V I E W


[Click Here](#)

Issue 76 - August 1, 1995

WinOnLine

Fruits	
Apple	7
Texas	8
California	6
Florida	21
Total fruit	



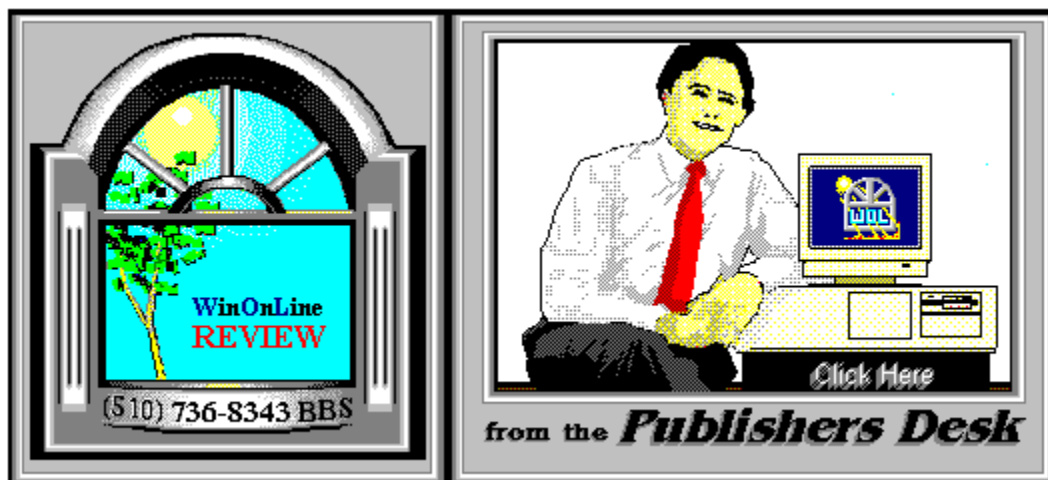




States
1 Total fruit = sum(Texas .. Florida)

Back
History
Search
Award List
Gallery
Glossary
ListMaker

WinOnLine™ Review™ is a publication of Windows OnLine™ (BBS). Copyright © 1992-1993 All Rights Reserved

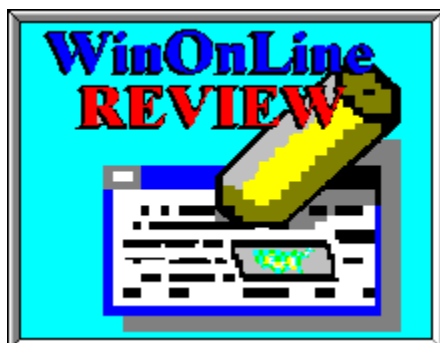


(Click Above For Table Of Contents)

About **Windows OnLine™**

Windows OnLine™ is an online (modem) service dedicated to supporting Windows users and Windows network professionals. **WOL** prides itself on having the most complete and up-to-date library of Windows shareware in the world. We have over 9,000 Windows 3.x programs and files to download. With **17** phone lines, (all equipped with **US Robotics high speed dual standard modems**), operating 24 hours a day, 365 days a year.

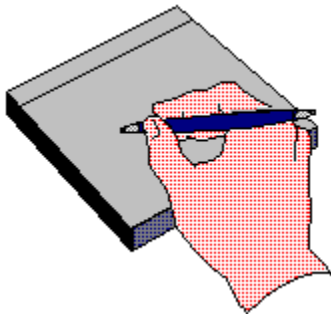
WOL is growing rapidly with **thousands of callers** directly using the service. We advertise in national publications as well as several computer newspapers. **Call today** and see why **WOL** is the ***Worlds Premiere Windows Online Service.***



About **Windows OnLine™ REVIEW**

The **Windows OnLine™ REVIEW (WOLR)** is an electronic magazine that is distributed

worldwide to major on-line services each month. It is estimated that each issue is read by 50,000 online and network users. (It is reported that there are over 50,000 BBS's in the USA alone as of 1992). This unique creation is actually a Windows HELP file. All Windows users can view it with its **hypertext, built-in search, and pop-up color graphics**. The **REVIEW's** articles are limited in scope to allow us to present to our readers both a diversity information and to maintain a manageable file size.



Why not

Write for Windows OnLine™

Do you like to test shareware programs? Do you enjoy giving opinions on the latest commercial Windows software? Do you have an interest in Windows software, hardware, programming, etc., and the time to write an article or review? Do you like working with graphics? We are interested in adding a few quality Freelance or Staff writers for

WinOnLine™ Review™ and/or the WinOnLine™ Review™ Shareware Edition

Freelance writers can submit their article whenever they wish and are only required to include a .RTF or .DOC file and the .BMP graphics for their article. We will prepare your help file for you. **You can become part of our publication, so call us today (voice) 510-736-4376.** You can also leave a message on WOL (BBS) in Conference 4 address it to the Sysop, Randy Wong, or Bob Gollihur.



Copyright © Information

The **REVIEW** is a product of,

Windows OnLine™, no reprinting of any portion of this publication is permitted without the express written permission of Frank J. Mahaney of **Windows OnLine™**.

Sysops and Corporations **may freely offer the .ZIP file for download** by their users. You **may not display the contained .HLP file** as bulletins, news, help files, etc., on any BBS or network, nor are you permitted such reprinting or display of these files, except as otherwise expressly granted, in writing, by **Windows OnLine™**. Subscriptions are available to Corporations who wish to offer the HLP file on their Windows Networks. For subscription information call our voice number (510) 736-4376.

All articles are copyrighted by their authors and upon publication all rights are owned by **Windows OnLine™**. Opinions presented herein are those of the individual author and do not necessarily reflect the opinions of **Windows OnLine™** or the **REVIEW**.



Call Windows OnLine™ Today!

(510) 736-8343 (BBS)

(510)736-4376 Voice/Fax

The contents of this issue and all issues of the REVIEW are copyrighted by Windows OnLine™ and Frank J. Mahaney
All right reserved Copyright © 1992-1993, Windows OnLine™

Publisher : Frank Mahaney Editor : Randy Wong

Call Windows OnLine™ today!

(510) 736-8343 bbs

Frank J. Mahaney

Publisher

(510) 736-4376 Voice/Fax

Windows OnLine™

Box 1614

Danville, CA 94526-6614

Copyright © 1992-1993, Windows Online™



Tami Brydone-Jack

Ed Hoffman

Steve Peschka

Bob Gollhur

Rich Young

William Brown

Publisher : Frank Mahaney

Front WOL Logo : Derek Westfall

Graphics and Design : Randy Wong



Windows NT

Windows NT should be available this month. There will be two versions, the Standard version and the Advanced Server version. The following prices were taken from the Microsoft Developers Network News.

- Windows NT has a suggested price of \$495., with a special offer of \$295. for users upgrading from Windows or OS/2.



Windows NT Advanced Server has a suggested price of \$2995., with a six-month promotional price of \$1495. and an upgrade price of \$595. for users of Microsoft LAN Manager for OS/2.

As more news of Window NT becomes available, we will try to let ya' ll know.



Windows OnLine has created a weekly magazine, the

WinOnLine™ REVIEW™ Shareware Edition,

which is strictly shareware to go. Going on Issue #15, this magazine contains:

Shareware product briefs

A shareware Review or two

What's new in Windows shareware files

and a few interesting words from *Wolly*. ... "Who's he"?



If you have not read the **WinOnLine™ REVIEW™ Shareware Edition** magazine, pick up the file WOLRSx.ZIP, it's **FREE!**



Don't forget, please drop by and visit us. You may find something you like. Until next time, happy computing!



*Frank J. Mahaney
Publisher*

Cover Story



(Click)

In this Issue:

(Click all Buttons)

Features



Working Smarter In WordPerfect, by Tami Brydone-Jack

Commercial Reviews



Microsoft Mouse, by Randy Wong



London's WordPerfect Utilities, by Ed Hoffman



Improv For Windows, by John Morris



MathType 3.0, by Ed Hoffman



Microsoft Cinemania, by Randy Wong



Alki's Thesaurus & Speller, by Ed Hoffman

The Marketplace



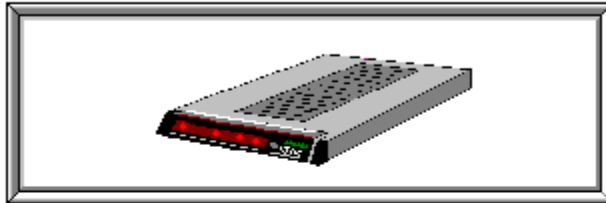
Modem Specials



THE **Bay Area Bulletin Board Advisor (BABBA)**

Looking for the best BBS in the Silicon Valley and Northern California?

US Robotics *High Speed Modems*



The Best For Less !!

\$179.95 for a USR Sportster Internal Modem 14,400 bps v.32bis

\$199.95 for a USR Sportster Internal Fax/Modem 14,400 bps v.32bis

\$199.95 for a USR Sportster External Modem 14,400 bps v.32bis

\$229.95 for a USR Sportster External Fax/Modem 14,400 bps v.32bis

Windows OnLine™ sells all US Robotics products - Call us with your order

Consider membership with Windows OnLine™ for the latest Windows shareware and now outstanding modems at fabulous prices.



BABBA



THE **B**ay **A**rea **B**ulletin **B**oard **A**dvisor

BABBA is the publication that gives you ALL the details of the best BBSs in Silicon Valley and Northern California. **BABBA** has interesting articles and FEATURES that help the novice and experienced user get the most out of BBS systems. **BABBA** is THE constantly updated definitive guide to the best BBSs in Silicon Valley. The list contains over 250 BBSs and growing each month. EVERY type of BBS is listed in detail that no other publication can match. KNOW what to expect BEFORE making that long distance call! Only \$18 for 12 monthly issues (U.S.). Inquire for International rates. Satisfaction Guaranteed.

BABBA

P.O. Box 360588

Milpitas, CA 95036-0588

Voice: 408-946-3823

Fax: 408-946-5331

BBS: 408-946-5642

Internet: baba@netcom.com

RIME node 5093, RIME conference 887

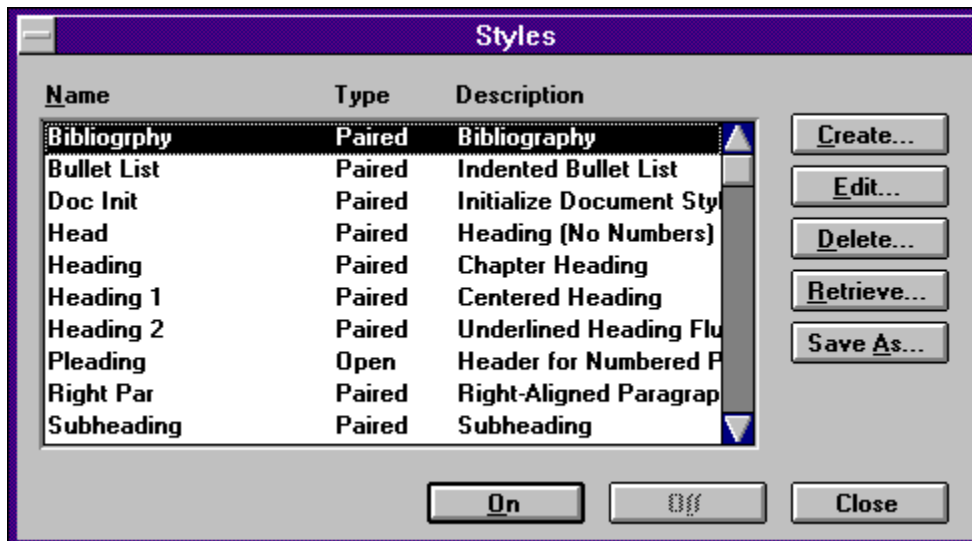


Tami Talks WPWin 5.2

Working Smarter

Last month, I talked about the ruler and button bar, and how those two features could help simplify many of WPWin's commands. This month, I will talk about using styles. Remember that many of the hints (with a few exceptions) can also be used in WP51 for DOS as well.

The first thing that you need to do in order to utilize styles is to make sure that you have specified a style library (which is simply the group of styles available) in the **File, Preferences** menu. The default style library filename is **LIBRARY.STY** and is located in C:\WPWIN.



Open, Paired and Outline Styles

An Open style is one that is turned on, but not turned off. The formatting changes in an Open style affect the document from the point that the style is turned on until the end of a document. A Paired style has an on and off code. Anything between the style on and style off codes conforms to the formatting of the style. An Outline style is used with outlines and paragraph numbering. The most commonly used styles are Paired styles.

Creating a Letter Style

In most business applications, you will be using a firm letterhead. Instead of having to remember that you need to have, for example, 8 hard returns, the date flush right, and then three more hard returns, why not create a letter style? Choose **Layout, Style, Create** and name the style "Letter" and specify a paired style.

Now, press ENTER eight times, **Layout, Line, FlushRight**. Next, choose **Tools, Date, Code** and press ENTER three more times. Close the style editing screen. To make this new style part of the permanent style library, choose **SaveAs** in the style menu, and save it under the name of your default style library.

Once this letter style is created, each time you are going to type a letter, instead of using all of those keystrokes, simply press the Style button on the ruler (you are using the ruler and button bars, aren't you??), and choose the letter style. Much quicker and far more efficient.

A Few Other Uses for Styles

Styles can be used for more than just letterheads. In creating a book, each chapter head can be formatted with a chapter head style that also marks the text for a table of contents. Styles can be used in newsletters for headlines and callouts. The application of styles is only limited by your imagination.

I extend an invitation for comments and questions. If there is any topic that you would like to see covered, please leave me a message on the main board, and I will cover it in a future column.

*Brought to you by:
Tami Brydone-Jack*



[\(Click Here\)](#)



Click for Table Of Contents





Microsoft Corporation

Fits the Way You Work, with Ergonomic Comfort!

by Randy Wong




What could you do to make a popular mouse even more popular? How about a new design that looks like the old one, but has a better feel to it. Add a new mouse driver with more features for Windows, and you will have an instant hit. The new mouse should fit both right or left handed users, small or large hands, and must be comfortable. It must have complete compatibility with other software applications and make computing with Windows easier and faster. What Microsoft came up with, was a combination of hardware and software, Microsoft Mouse 2.0 and Microsoft Mouse Driver 9.0.

At first glance, the new ergonomic mouse has:

 A softer and shorter cable.

 Longer and wider keys.

 An opto-mechanical encoder, for better cursor accuracy.

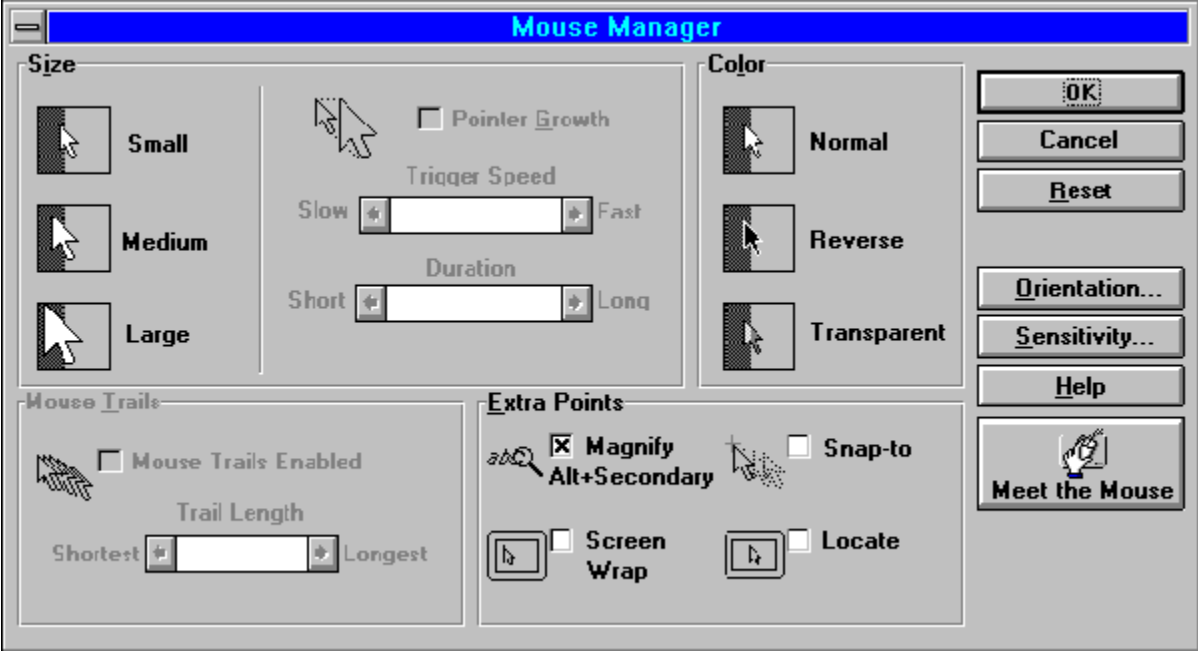
 A touch heavier in weight.



Five Teflon guides, instead of one in front and one in back.



Redesigned roller assembly and retainer ring, for better traction.



To compliment the new mouse, a new driver was created to make life easier on Windows users. The **Mouse Manager** is the key to setting up the mouse driver in Windows. You can change the mouse cursors size, such as small, medium, and large. Small is the normal setting on my display at 640x480. While the setting of large, makes it easier on my eyes at 1024x768. The Pointer Growth feature is available when you have selected the medium or large cursor pointer. This feature causes the pointer to grow to the larger size when you move the mouse quickly. Once mouse movement slows or stops, the pointer returns to normal (small) size. The Mouse Tail settings are still here, and works best with laptops.

Interesting new features:



The **Magnify** Option enlarges a two-inch square section of the screen at the cursor pointer. This is very nice for fine detail activity in a drawing. The function is activated using a user-defined Hot Key, such as using the Control, Alt, or Shift key with either the primary or secondary mouse button.



The **Snap-To** Option automatically moves the mouse cursor to a default button when a dialog box appears. This is to minimize the movements of the mouse for the user.

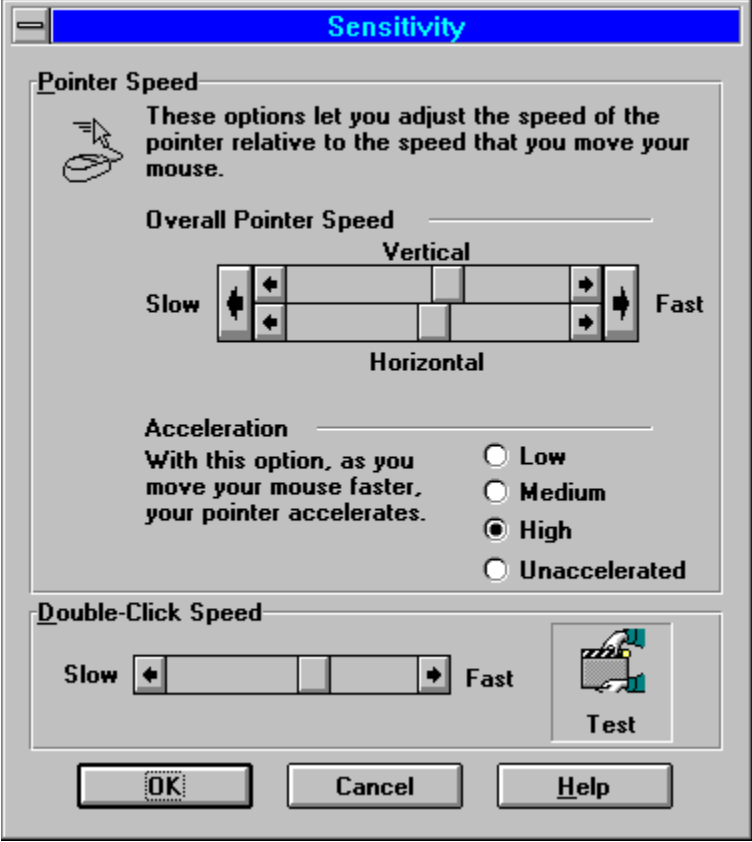


The **Screen Wrap** Option lets the mouse cursor wrap to the opposite side of the screen when it is moved off an edge. This reduces the mouse movement for users who needs to travel across the screen for other activities. All you have to do is move the mouse off the edge and it will appear on the other side of the screen.

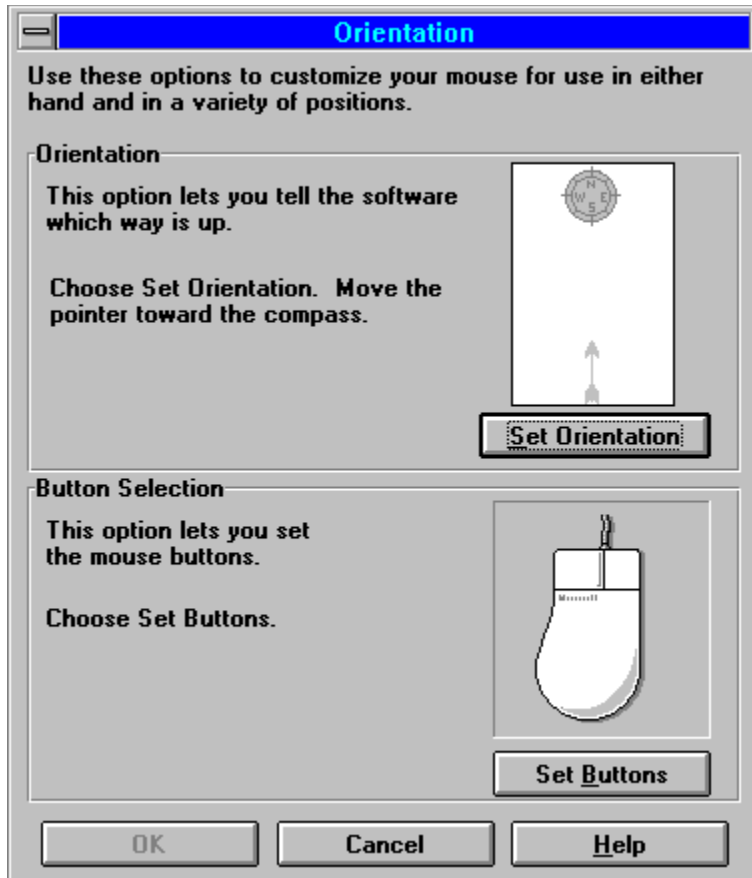


The **Locate** Option will allow the user to move the mouse cursor to the center of the screen via a Hot Key. The Hot Key is setup by using the Control, Alt, or Shift key and either the primary or secondary mouse button.

An animated tutorial, called Meet The Mouse, was included for the first time users, who would like to know more about using a mouse. The tutor relays information about the ergonomic and software features of the new mouse. It was very cute.



The **Sensitivity** Option follows the old Windows mouse setup. In which, you could set the horizontal and vertical movement of the mouse cursor, the speed in which the cursor moves on the screen, and the speed of the mouse clicks. Nothing new in this area, except that it looks a little fancier with the 3-D look.



Another new feature, was the **Orientation** option. Its function is to allow the user to hold the mouse at any angle, and still move the mouse cursor in a straight line. This option lets a user set the direction the mouse pointer travels on the screen. Normally, a user would have to use the top of the mouse as the point of focus and moves in the direction it is pointing. With this feature, you could re-map the mouse driver, so that, a user does not have to follow the top of the mouse to draw a straight line. A user may now hold the mouse any way he/she wants to, at an angle even, and still achieve going in a straight line.

The Bottom Line

The new ergonomic design of the Microsoft mouse was a big hit in my household. The feel was comfortable and it fit nicely. For long usage, I was never tired of holding on to this rodent. Since the design was for right and left handed users and all users, I had to let everyone check it out. I did find out that kids with small hands felt that it was a bit uncomfortable, and liked the old Microsoft mouse better... what do they know. The new mouse driver, version 9.0, played a major part when using Windows. New adjustments and features make this driver a must to get. It works great on the new Microsoft mouse as well as the older one. If and when you are in a market for a new mouse, get your hands on one of these and give it a *feel* for yourself.

Requirements

- Any Microsoft Windows based or DOS based computer.



Microsoft DOS operating system 2.0 and higher.



An MDA, CGA, EGA, VGA, SVGA, XGA, or VESA VCI compatible display adaptor.



One available expansion slot for a bus version mouse or an available serial port for the serial version mouse.



For more information, please contact:



Microsoft Corporation

One Microsoft Way

Redmond, WA 98052-6399

206-882-8080

1-800-426-9400

\$109. for the Serial Mouse or PS/2 (Mouse Port) version


\$125. for the bus mouse

Microsoft BallPoint: \$149. for the portable serial and PS/2 versions

\$165. for the desktop version

Software Upgrade to version 9.0 is available to registered users for \$19.95 plus S/H



Randy Wong 



Computer News & Product Reviews

© 1993, Windows OnLine™ IDS



[Click for Table Of Contents](#)

Product Review



Randy Wong
Windows OnLine™

BBS : 510-736-8343 Voice : 510-736-4376

The New Microsoft Mouse

**Legend 486-33, 256K cache computer
16 MB of memory**



**Hercules ISA Graphite Accelerator
Nec MultiSync 4FG**

**Maxtor LXT7213A 210MB IDE Harddrive
Promise Tech SuperIDE cache controller**



**Microsoft Bus Mouse
2 serial and 1 parallel**



a 5.25" and a 3.5" floppy drive

Logitech ScanMan Color

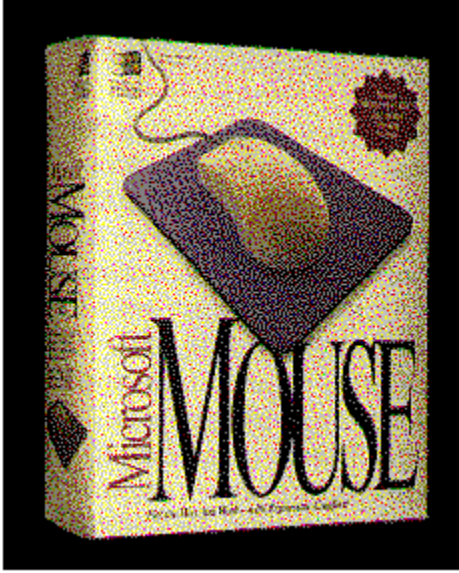
Media Vision Pro 16 Multimedia System

Several of the graphic images were scanned with the Logitech ScanMan Color hand scanner using FotoTouch Color Imaging Editing Software. Final Touchup using Paintbrush and WinGif 1.4.

MEET THE MOUSE

Copyright (c) Microsoft Corp. 1984-1993. All rights reserved.







WordPerfect Utilities

Word processing utilities are almost like money, you can never have enough. I've long held the opinion that anything that makes my computing work easier deserves a place on my system. So, when I saw this group of WordPerfect for Windows utilities, from the *London Company*, I just had to take a closer look. These utilities are grouped into four individual programs, or products: *MacroMania™*, *SeeThru™*, *FormHeaven™*, and *FaxHeaven™*. Though each of these utilities is impressive, together they offer a complete array of features to the WordPerfect user.



MacroMania

The *MacroMania™* utility is a collection of 300 macros contained in over 70 files to automate and simplify many of the tasks you routinely do with a large number of keystrokes. Two examples of this automation are *Bullet* macro and the *Calendar* macro shown below. When called, the bullet macro (bulletS.wcm) appears and offers a variety of choices. All you need to do is select the style of bullet you want and either click on the menu with the mouse, or simply press the letter next to the bullet style. The bullet then appears on the screen, right at your cursor. The calendar macro (CALENDAR.WCM) operates just as simply. First select the macro and the first window (A) prompts you to select a month. Once selected, the macro then displays the year (B) and prompts you to make your selection. Once you select the year, the macro then completes a calendar page on the screen.

A Bullet I
B Small Bullet ·
C Large Bullet
D Square Bullet
E Small Square Bullet
F Large Square Bullet
G Large Hollow Bullet
H Large Square Hollow
I Inverse Bullet
J Inverse Hollow

A January
B February
C March
D April
E May
F June
G July
H August
I September
J October
K November
L December

1 1991
2 1992
3 1993
4 1994
5 1995
6 1996
7 1997
8 1998
9 1999

A

B

Each of the macros contained in this utility may be used as they are, or as is usually the case, you can modify the macros to suit your requirements. So, if you're a bit apprehensive about trying to write your own macros, don't worry, these macros can serve as an example for almost every macro command you'll need. In addition to performing a wide range of WordPerfect commands, there are also macros included with this utility to allow you to access other areas of windows. So, for example, if you keep your notes in the card file, all you'll need to do is run the card file macro to bring up the windows card file, right in your document. You can then cut and paste the information you need. In addition to a wide range of usual commands, the utility also has several borders, page layouts, letterhead styles, and backgrounds.

SeeThru

The *SeeThru™* utility allows you to apply a variety of print-through messages to your documents. Included are the words RUSH, COPY, IMPORTANT, A.S.A.P., DRAFT, TOP SECRET, CONFIDENTIAL, as well as over 90 more messages and graphic designs. The images may be set up to print in a variety of styles, such as solid black, shades of gray, or simply an outline of the words. You can also use the graphic images to produce a watermark effect on your documents. Two complete print-through alphabets are also included to permit you to make up your own personalized monograms to really spiff-up your correspondence or forms.

FormHeaven and FaxHeaven

The *FormHeaven*, and *FaxHeaven* utilities are collections of forms and fax cover sheets. With these utilities you'll have over 150 pre-designed business forms and 60 fax cover sheets that you can use as is, or customize to suit your specific company requirements. Many of the business forms are *smart forms* that contain the necessary codes to do any required calculations automatically. Invoices, employee records, time sheets, tax records, Avery label templates, and many other types of forms are included. There are even 50+ graphics to help make your customized forms look more professional.

If you use WordPerfect, these utilities can save you many hours of work and lots of frustration. At this price, if you only used one item from each program, it would still pay for itself. If you order all four utilities, you'll get *Dr. Grafikus Professional Design Studio™* and *Font Heaven™* free. These utilities include over 250 graphic templates and over 20 designer TrueType fonts.

MacroMania™
SeeThru™
FormHeaven™
FaxHeaven™
(Retail price: \$9.95,)

The London Company
1456 Second Avenue, Suite 140
New York, NY 10021

Brought to you by:

Ed Hoffman
Staff Writer



[Click for Table Of Contents](#)

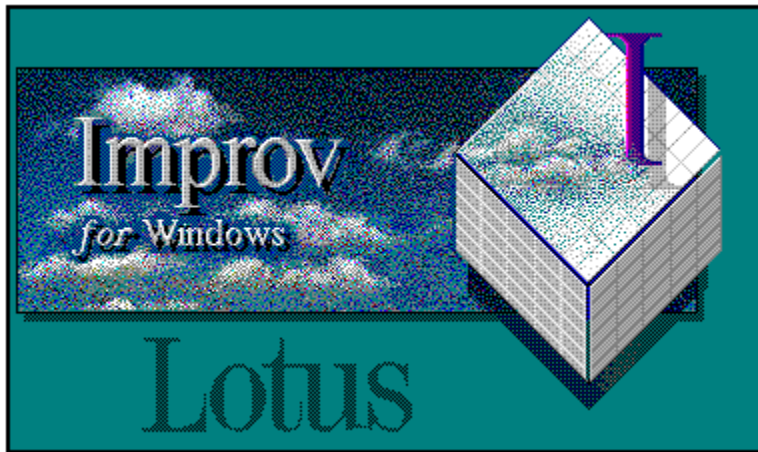


Hoffman & Associates

2417 Ranch Lane Colorado Springs, CO 80918

Telephone: (719) 599-8823 FAX: (719) 260-1467

Edward G. Hoffman, Ph.D., CMfgE, CAMS



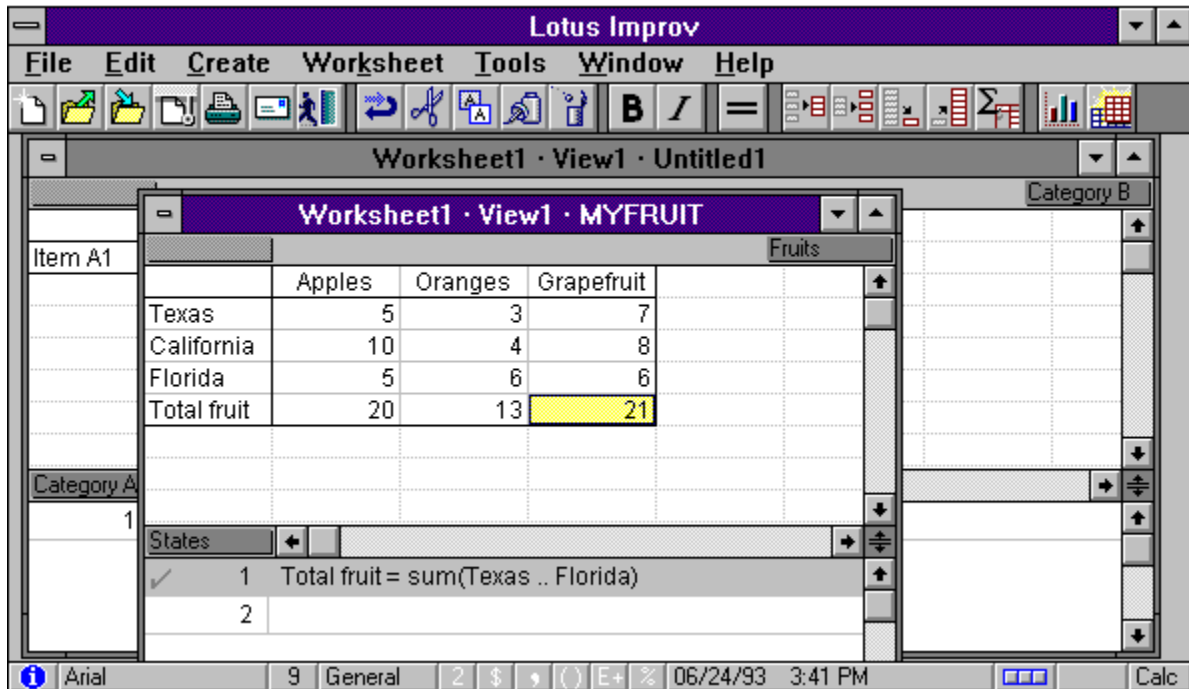
IMPROV for Windows

Yes, *Improv* is a spreadsheet, and yes, it comes from Lotus. But, do yourself a favor, try it with an open mind... you'll discover all sorts of unexpected possibilities.

Improv isn't just another Windows spreadsheet. I'm an old database programmer, and whether I'm working with a spreadsheet or a database, I tend to think in rows and column. Even so, I also expect computers to make my life easier and get work out the door.

Improv presents intriguing possibilities.

First, and bear with me on this, it's probably the most sensible object oriented application I've seen to date. About objects, a Borland manual advises, "Think like a painter. You see an apple and you paint an apple. The picture of an apple is not an apple; it's just a symbol on a flat surface. But it hasn't been abstracted into seven numbers, all standing alone and independent... Its components remain together, in their essential relationships to one another."



Improv does a fine job handling the apples, oranges, and grapefruit. You're no longer dealing with cell A1 and cell C16, with data in some of the cells and formulas in others.

In fact, *Improv's* "blank spreadsheet" is a single cell. The single cell is simply the intersection of a couple of categories.

So how do *Improv's* categories differ from the letters and numbers for conventional rows and columns? Well, to use them properly, you name them. If you want counts of apples, oranges and grapefruit coming in from California, Texas, and Florida, you might name one category States and the other Fruits. You enter California through Florida down the side and apples through grapefruit across the top. And you enter the number of apples from Texas in the Texas:Apples cell.

As you can imagine, that means we're either playing silly little games with names -- or we're about to see something new. In the case of *Improv*, we're definitely into something new.



Here are a few highlights:

In flexibility, *Improv* takes a quantum leap over other spreadsheets. If you want to switch your layout to States across the top and Fruits down the side, you click and drag the names of the two categories where you want them. The arrangement of the spreadsheet changes accordingly. Since the day computer spreadsheets were invented, one of their main purposes has been data analysis. *Improv* gives new meaning to data analysis. Categories may be nested 12 deep, and the program lets you develop subcategories in stages. Moreover, you may create

subtotals for various categories, then hide the detail data. Finally, all this stuff moves around (and not incidentally, also copies and expands) very nicely with the mouse. When you build an *Improv* spreadsheet, you manipulate the categories as easily as you can single-cell items in conventional spreadsheets. The need for many conventional block moves and replication have been greatly reduced or entirely eliminated. *Improv* does things with a few mouse moves that cannot be done with a cell-based spreadsheet unless you completely rebuild the spreadsheet.

Formulas no longer exist in cells. You enter formulas in a formula pane, separate from the spreadsheet itself. You can, for instance, add a line, Total Fruit, beneath your column of States. The formula, Total Fruit = sum (Texas..Florida), not only totals a single column of fruit but totals each and every column of fruit in the spreadsheet. Lotus calls this a "self-documenting" feature. The term is accurate.

Somewhat to my surprise, *Improv* reads and writes 1-2-3 and Excel files. It imports ASCII text files as *Improv* spreadsheets.

An "InfoBox" provides colors, fill patterns, line and text styles. As do most Windows programs, *Improv* provides a full range of formatting and graphics capabilities -- and again, adds a few pleasant touches of its own. As you would expect from a major Windows program, *Improv* supports Dynamic Data Exchange (DDE) and Object Linking and Embedding (OLE). A script editor provides programming capabilities, and Lotus Dialog Editor permits custom user interfaces to user-scripted programs.

All of which brings us to The Big Question: Is *Improv* for you? The "Buy Now" flag flies high if you're frustrated with the rigid structure of a conventional spreadsheet. *Improv* offers a variety in the presentation of data that is absolutely unmatched in conventional spreadsheets. I also sense that *Improv* will feel more natural to people who are new to computers.



Improv for Windows

(Retail price: \$495)

Available From:

Lotus
55 Cambridge Parkway
Cambridge MA 02142

Lotus Development Canada Limited
10 Bay Street

Toronto, Ontario M5J 248

Reviewed By:

John A. Morris

329 Longfellow Drive

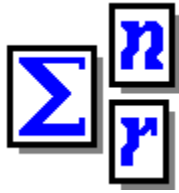
Colorado Springs, CO 80910

Voice: (719) 597-2970

Fax: (719) 574-3634



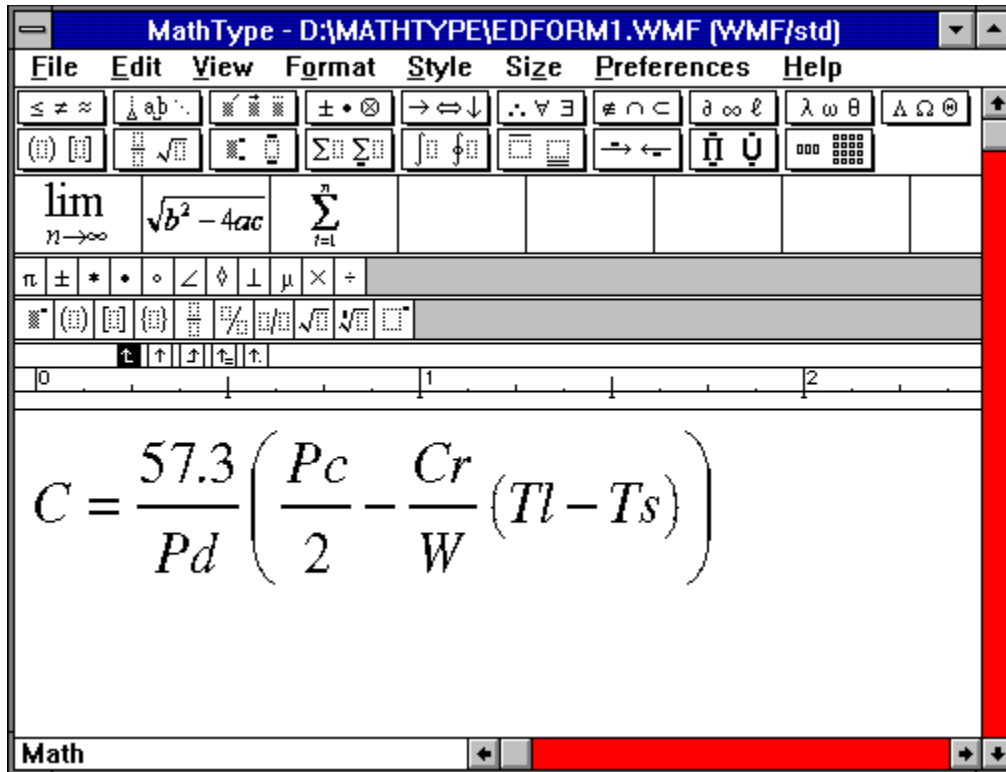
[Click for Table Of Contents](#)



MathType 3.0

Word processing has certainly come a long way since the first text based programs of just a few years ago. Today, even the low-end word processors can handle virtually all writing or publishing tasks. From arranging pages and text to setting graphics and tables, modern word processors can do much of the work formally reserved for high end desktop publishing programs. However, typesetting mathematical equations and formulas is still one area of desktop publishing that even the best word processor has yet to master. Most word processors have included an equation editor of some type within the program, but at best these editors tend to be both awkward and difficult for most people. Word for Windows, version 2.0, has one of the better equation editors, but even this editor lacks many features that could simplify the task of typesetting formulas.

For anyone that needs to include equations, formulas, or other mathematical data into documents created with most word processing programs, the limitations of these standard programs are something you know only too well. Today, however, there is relief from the mental gymnastics required in placing these mathematical elements in your documents. This relief is in the form of *MathType for Windows 3.0*. This program is a full fledged Mathematical Equation Editor that allows you to both construct and edit your formulas and add the finished element to your document as typeset copy. For those who already use the equation editor furnished with Word for Windows 2.0, you'll be surprised to see that this editor looks remarkably similar. The reason for this is that the editor included in Word for Windows 2.0, is actually an abbreviated or mini-version of the actual MathType program.



The program allows you to not only construct and edit virtually any type of mathematical equation, but you can also add text and symbols to the document as well. The program is remarkably easy to use even if you have little experience with either Windows or mathematical formulas. If you presently have Word for Windows 2.0 installed on your system, the *MathType 3.0* installation will automatically replace the equation editor that comes with Word. So, when you access the editor (Insert, Object), the *MathType 3.0* editor appears. To construct a formula, simply start typing. The menu structure of *MathType 3.0* is easy to understand and well organized.

Symbol Palette

The symbol palette is directly below the menu bar. The symbol palette contains 158 symbols that are accessed with a few mouse clicks. All the symbols required for almost all applications are contained here. But, should you need any special symbols, they can be added quite easily from the selections of fonts on your system.

Template Palette

The template palette is directly under the symbol palette. The template palette lists 119 templates for positioning the formulas exactly as you desire. Like the symbol palette, these templates are accessed with a few mouse clicks. From expanding brackets and braces to long division symbols, this palette contains templates for virtually anything mathematical. There are even 5 different templates for showing common fractions.

Macro Bar

The next line down is the macro bar. This area can store the expressions you frequently

use. So, once you have a set of symbols and templates combined into a formula you frequently need, you can save the arrangement as a macro. Then, the next time you need to use the expression, it's only a mouse click away. The program will allow you to have up to 31 different equations, or parts of an equation, on this bar.

Symbol Bar

The symbol bar is located directly below the macro bar. The symbol bar allows you to store the symbols you use most often in a convenient place. Rather than going to the symbol palette each time you need a commonly used symbol, you can simply install the symbols on this bar where they are close at hand when you need them.

Template Bar

The template bar is positioned below the symbol bar. Like the symbol bar, the template bar allows you to store the items, or templates, you use most often in an easily accessible place. So, instead of selecting the templates you use most often from the template palette, you need only add the templates to the template bar. The next time you need a template, simply click on the symbol and it's inserted directly in your formula.

Ruler & Status Bars

The ruler and status bars are also conveniently located. The ruler, positioned at the top of the formula window shows the exact size and position of your formula. You can also set tabs and stops for aligning elements and to control the formatting. The status bar shows you the font you are presently using as well as any messages from the program.

All things considered, if you work with placing formulas and equations in documents, *MathType 3.0* may be just what you need to retain your sanity. Although the program only sets up and prints the formulas, and doesn't solve them, just having the formula properly constructed is often half the battle. MathType 3.0 works with an impressive array of Windows programs including all the major word processors and desktop publishing programs. It will even work with DOS programs, like WordPerfect, Word, and Ventura Publisher, if you have a PostScript printer and a program that accepts EPS graphics.

MathType for Windows 3.0

(Retail price: \$199.00 [upgrades for Word for Windows 2.0 users are \$89.00])

Design Science, Inc.
4028 Broadway
Long Beach, CA 90803
1-800-827-0685

Brought to you by:

Ed Hoffman
Staff Writer





[Click for Table Of Contents](#)



Microsoft Corporation

Fast Fun Way To Explore The Magic Of The Movies

 *by Randy Wong* 

Index	Back	History	Search	Award List	Gallery	Glossary	ListMaker
-----------------------	----------------------	-------------------------	------------------------	----------------------------	-------------------------	--------------------------	---------------------------

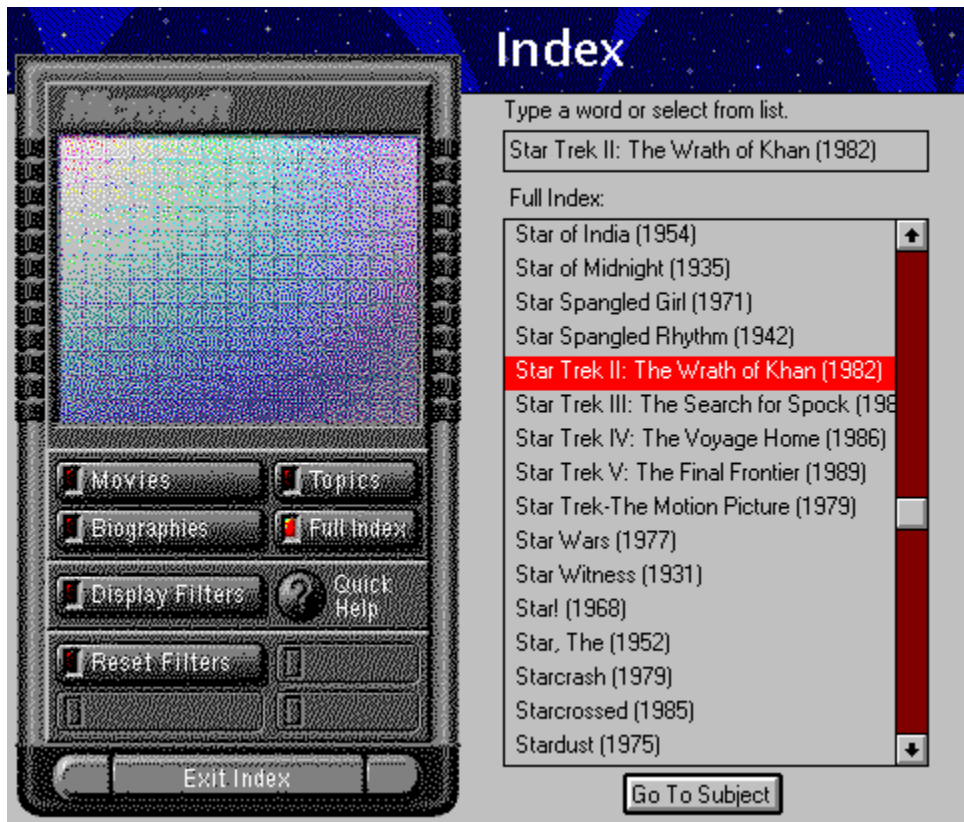
Who were the actors and actresses in Godfather Part II? What's Woody Allen birth date? What University did Kistie Alley attend? Do you want to know more about a particular actor or actress? Do you want to see movie reviews? Find these and other answers in Microsoft's movie software, Cinemaniania. This is the first Multimedia product I have found that contains a wealth of information about movies. Cinemaniania takes the first step in creating a movie guide that you can have at home.



Microsoft Cinemania contains capsule reviews from Leonard Maltin's *Movie and Video Guide 1992* of over 19,000 movies. Other detail reviews of classic and recent movies were taken from Baseline's *Motion Picture Guide*. There are biographies and film graphics of nearly 3,000 performers, directors, and other film people from the Baseline's *Encyclopedia of Film*. You will also find informative articles on different movie topics. If movie terms stump you, you will find a glossary of film words from James Monaco's *How to Read a Film*. Who and what were the Academy Award nominees and winners in 1934? That's no problem, there is a section just for Academy Awards. There are over 1000 photos of movie scenes and portraits. You will hear nearly 100 famous lines and sayings from movie history. With all these resources in one place, there is not too much Cinemania can't tell you.



When you start up Cinemania, you are given a remote control device. With this device and the button bar, you maneuver through movies, biographies, listings, and other assorted things. With Cinemania's multimedia features, you will see and hear parts of movie scenes. With this powerful tool, you can search by genre, actor, release date, star rating, awards, and even MPAA rating. Clicking on highlighted words, names, or objects, you jump to the related material. As you jump from one material to the next, the remote control's button will change, as well as the control's display. If you want, you can add your own bookmarks to find your way back to that location. You can add notes about a certain point. You could even print the topic you are on.



With the remote control, you press a button to begin your journey into the various sections. **Movie Listings** are where all the reviews of movies from recent to classic. **Biographies** will take you into the world of biographies and film graphics of movie stars, directors, behind the scene people, and other major and minor performers. **Topics** contain movie articles on film making, film history, and other things that happened behind the scenes. **Award List** shows all the Academy Award nominees and winners since the start of this award. The Multimedia **Gallery** quickly jumps you through all items that contain dialogues and pictures. Do you want to put together a list of movies to see? That's where the **ListMaker** section comes into play. Pushing this button, you can now create your own list of movies. You can add, delete, and even print your movie list.




If you are interested in all that Cinemania has to offer, you could try out the **Overview** button. This is an animated introductory tutorial, that tells you about Cinemania and what it can do for you. If you are stepping through Cinemania for the first time, this section is where you should go first. It is a movie by itself.



If you are into movies, movie stars, and the history of film, then Cinemania is a very good starting point. I wish there were video clips and more sounds from highlights of movies. Since this is the 1992 Edition, the current movie listings and updates were not included. The graphics and images were amazingly good, even if most of the pictures were gray scaled. The style in which it was laid out, using a remote control, was great. I have found several movies that I missed along the way, and now I'm off to the video store to rent them.



For accessing sound, animations, graphics, and text, you will need:

 A Multimedia PC or a Microsoft Windows based computer with the Multimedia PC upgrade kit, which includes a 150K per second transfer rate CD-ROM drive and a MPC compatible audio board..



Microsoft DOS 3.1 or higher.



Microsoft Windows 3.1 or later or Microsoft Windows 3.0 with Multimedia Extensions.



MS-DOS CD-ROM Extensions (MSCDEX) version 2.2 or later.



VGA, VGA+, or higher graphic resolution.



Any Windows pointing device.



Headphones or speakers.

For accessing text and graphics only, you will need:



Any Microsoft Windows based computer, a 386SX and higher based computer is recommended.



MBytes and higher random access memory (RAM).

2



CD-ROM drive.

A



Microsoft DOS 3.1 or higher.



Microsoft Windows 3.0 or later.



MS-DOS CD-ROM Extensions (MSCDEX) version 2.2 or later.



VGA, VGA+, or higher graphic resolution.



Any Windows pointing device.



For more information, please contact:




Microsoft Corporation

**One Microsoft Way
Redmond, WA 98052-6399
206-882-8080
1-800-426-9400**

List Price: \$79.95



Randy Wong 



Computer News & Product Reviews

© 1993, Windows OnLine™ IDS



[Click for Table Of Contents](#)

Microsoft Cinemania

**Legend 486-33, 256K cache computer
16 MB of memory**



**Hercules ISA Graphite Accelerator
Nec MultiSync 4FG**

**Maxtor LXT7213A 210MB IDE Harddrive
Promise Tech SuperIDE cache controller**



**Microsoft Bus Mouse
2 serial and 1 parallel**



a 5.25" and a 3.5" floppy drive

Logitech ScanMan Color

Media Vision Pro 16 Multimedia System

Several of the graphic images were scanned with the Logitech ScanMan Color hand scanner using FotoTouch Color Imaging Editing Software. Final Touchup using Paintbrush and WinGif 1.4.

Multimedia: Cinemania(tm)

Explore the magic of movies!
Cinemania is the fast, fun way to see
and hear it all, reviews, biographies,
photos, and more. An incredible view
of the movies.



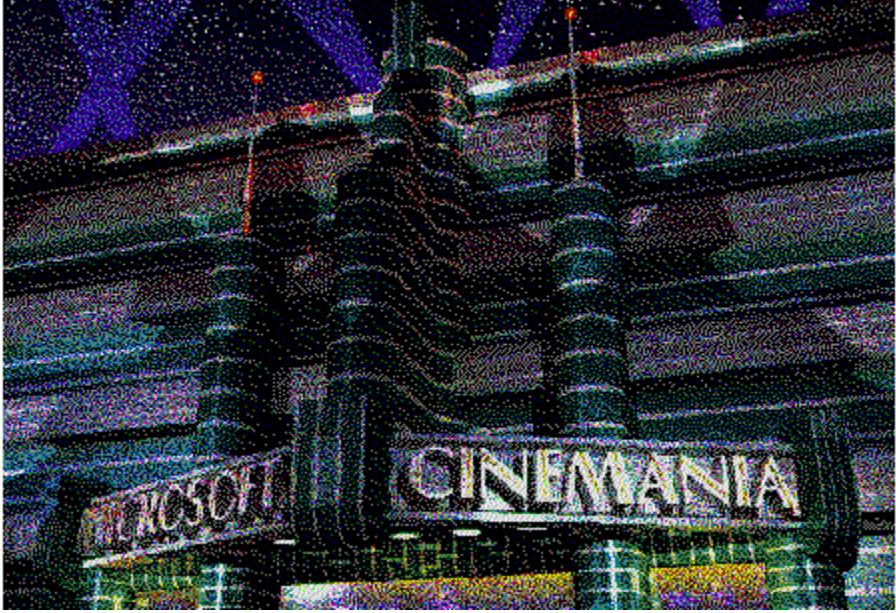
Cinemanía Software Credits



©1992 Microsoft Corporation. All rights reserved.
Printed in the United States of America.

Microsoft, MS, and MS-DOS are registered
trademarks, and Windows is a trademark of
Microsoft Corporation.

The MPC logo is a trademark of The Multimedia PC
Marketing Council, Inc.





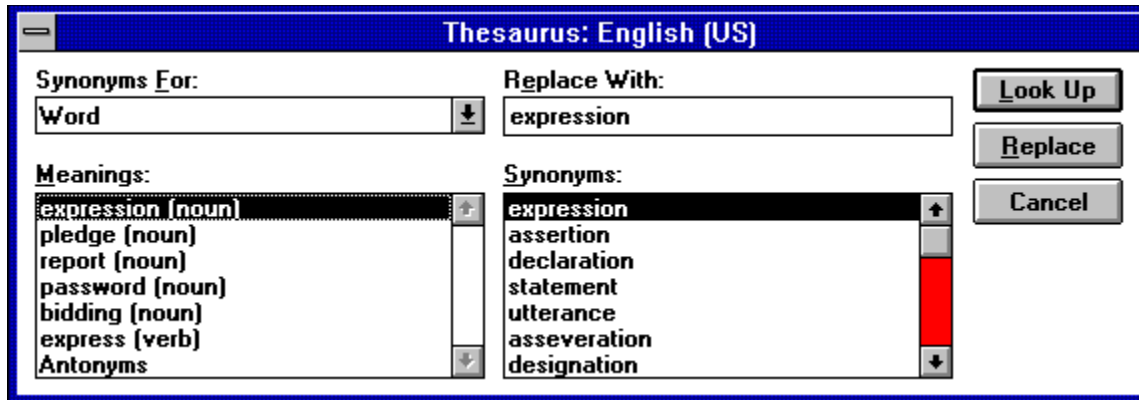
Adding Power To Your Word Proofing Toolbox

Word for Windows is undoubtedly a powerful word processor. Virtually anything you could ever want in a word processor is in Word for Windows. But, for all its gadgets and capabilities, one area where I've often felt Word for Windows could use a bit of help is in its spell checking and thesaurus facilities. Though adequate, I find many of the words I use are flagged as miss-spelled when I know they are correct. Likewise, I often get the ***Word Not Found:*** message instead of the ***Synonyms for:*** message for words I think should be Word's built-in U.S. English thesaurus. These omissions may be more of a nuisance or an annoyance than a crippling limitation in Word for Windows. But, I think even the occasional user of this word processor could benefit from a better lexicon or word list in both the spell checker and the thesaurus.

Much to my surprise, after lamenting the limitations of Word for Windows with a friend, he asked if I had the ***Microsoft Word Comprehensive Thesaurus*** or ***Microsoft Word Comprehensive Spelling Dictionary*** installed. To this I responded, intelligently, the Microsoft Comprehensive What??? To make a long story short, after regaining my composure, I immediately set out to get these *gotta have* add-ons to my Word for Windows program.

Comprehensive Thesaurus

The thesaurus included with Word for Windows has a listing of approximately 24,000 words that it recognizes. From this list, Word offers roughly 200,000 synonyms. This size is quite respectable and adequate for most general correspondence. But, for those situations where the writer wants a larger selection of alternative words, we're forced to use a paper thesaurus. The ***Microsoft Word Comprehensive Thesaurus***, however has synonyms for about 50,000 words. From this, the program offers up some 600,000 synonyms, or three times as many as the base Word for Windows program.



The *Microsoft Word Comprehensive Thesaurus* is quite easy to install. In fact the installation is virtually automatic. The only thing you'll need to do is decide where to put the thesaurus and whether or not you want to keep the old thesaurus. The rest is done for you. The program sets up a new sub-directory, called PROOF, for the new thesaurus under your present WINWORD directory. This program defaults to your present WINWORD location, but if you wish you can change this location.

Comprehensive Spelling Dictionary

The built-in spell checker in Word for Windows has a listing of roughly 104,000 words that it recognizes. The *Microsoft Word Comprehensive Spelling Dictionary* adds an additional 74,100 words to this list for a total of approximately 178,000 words that it can verify. Here again, the basic spell checker is adequate for most general purpose work, but specialized correspondence or documents can be troublesome. To help with this problem the words added to the spell checker with the *Microsoft Word Comprehensive Spelling Dictionary* are specialized medical, legal, business financial, and insurance terms.



Like the Thesaurus, the *Microsoft Word Comprehensive Spelling Dictionary* is very easy to install. Once again you'll need only decide where to put the new spelling dictionary and whether or not you want to keep the old dictionary. The rest is done for you. The program sets up a new sub-directory, called PROOF, for the new spelling dictionary under your present WINWORD directory. If you have already installed the thesaurus, the spelling dictionary is simply added to this directory. As with the thesaurus, the program defaults to your present WINWORD location, but if you wish you can change this location.

Using these new tools is also very easy. In fact, both the thesaurus and spell checker operate the same as always. The only difference is the increased number of words available to you. If you find that the limitations of the built-in thesaurus and spell checker are a problem for you, or if you simply want more power in Word for Windows these programs are definitely worth your consideration.

Microsoft Word Comprehensive Thesaurus

(Retail price: \$39.95)

Microsoft Word Comprehensive Spelling Dictionary

(Retail price: \$69.95)

Alki Software Corporation
300 Queene Anne Ave. North, #410
Seattle, WA 98109-9803
1-206-286-2600 (Voice)
1-206-286-2785 (FAX)

Brought to you by:

Ed Hoffman
Staff Writer



[Click for Table Of Contents](#)

