

Pilot Install v1.9

With Pilot Install you can easily install palm applications or palm files (e.g. databases) WITHOUT HotSync.

Simply start Pilot Install and select the files you want to upload to the Handheld. Alternative you can drag and drop any [palm files](#) on the program icon or on a shortcut of Pilot Install.

Select the appropriate COM port (or USB) and the transfer rate (the defaults of Pilot Install are taken from original HotSync values). Pilot Install will wait then until the HotSync button is pressed.

If Pilot Install should stay open after the installation, the check box "Close on finish" has to be unchecked.

[Select files to install to the device](#)

[Frequently Asked Questions \(FAQ\)](#)

[Main menu](#)

[Features](#)

[What is PIA ?](#)

[Errors](#)

[History](#)

[License](#)

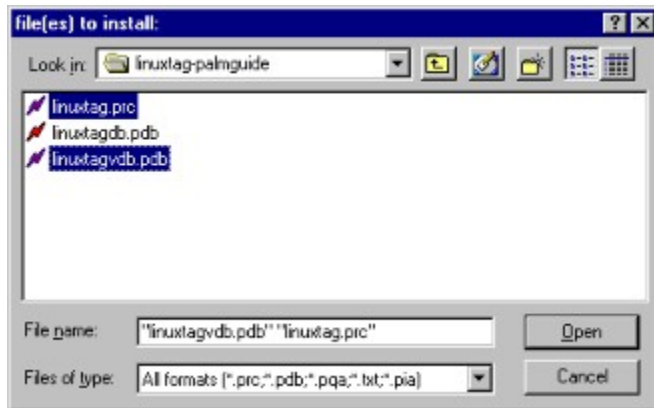
Install Palm OS Software directly from the web! ([Example](#))

web site:

<http://pinstall.envicon.com>

email: [Keep me informed about new versions of Pilot Install](#)

Select files to install



TIP: You can select more than one file using the *Shift* or *Ctrl* key while selecting files.

TIP2: You can additionally drop files on a running application before you press the HotSync button

Palm files:

Standard:

PRC Palm applications
PDB Palm databases
PQA Palm queries

Additional:

TXT would convert to the DOC format
PIA [Pilot Install Archiv](#)
MID would added to the system database (e.g. alarm)

Frequently Asked Questions (FAQ)

Q: *Which devices you will work?*

A: Normally, all Palm OS devices

Q: *Do you need HotSync or Palm Desktop installed on the pc to make your program run?*

A: No - "Pilot Install" works WITHOUT these, except USB support

Q: *Can i use booth (the Palm Desktop software and Pilot Install) at the same time ?*

A: Yes, Pilot Install does not influence any settings from the standard Install-tool. Only the filetypes (prc, pdb and pqa) can [registered but also unregistered](#)

Q: *"Pilot Install" or HotSync can not take control over the port and displayed "Port COMx busy" error message.*

A: Try to choose a other port and switch back to the original.

Q: *Can I upload on an infrared port ?*

A: Yes, if you have a virtual COMx port on the Interface (IRComm). Windows 2000 doesn't generally support this virtual com driver, but an alternativ driver can be downloaded.

Q: *I have uploaded a text file, but i can not see it*

A: For text files, you must use a additional DOC viewer. (see <http://www.palmgear.com> for "DOC Software" category)

Q: *My midi file would not installed/played!*

A: The midi-file must be only one voice (instrument) and does not exceed 64 KB. If your file matches these criteria, it would added to the system midi database ("System MIDI sounds" or "MIDI sounds") and could be selected (e.g. alarm preference from date book). The name from the midi would generated from the original desktop filename.

Q: *What is PIA ?*

A: PIA stands for [Pilot Install Archiv](#) and can contain several files for installations with options e.g. global requirements like a OS version, color support or CPU needed. (see <http://pininstall.envicon.com> for further informations)

Q: *Why is 256000 Baud sometimes slower than lower speeds ?*

A: Some devices have a build in limit (e.g. Palm III has a 115200 limit). But "Pilot Install" force the device to use these higher values. The result leads to additional sending/receiving packets (error handling). But with the right hardware 256000 speed could be useful.

Q: *Why the "/IGNOREHS" option ? If I use this, my port is occupied by HotSync.*

A: You can change the port of HotSync to a free one - use "Pilot Install" - an switch back to the original port. This could be faster than closing (reopening) HotSync ...

Q: *My USB will not work !*

A: To use USB Port you need the device driver from the handheld vendor (e.g. Visor HotSync). These driver is included in the Palm Desktop software. If you experience problems, please send us an email.

Q: *Will you have a Mac version ?*

A: No, currently no Mac version, available. If anyone has one to much...

History

- v1.0 initial
- v1.01 fix in reload closed program
fix detection of connect (Win 95/98)
enhanced speed
- v1.02 additional paramter (IGNOREHS)
- v1.03 add pqa support
more serial devices (up to 8)
backup and restore of old communication settings
new commandline parsing
- v1.04 transfer of empty databases (div by zero)
removing expire date
- v1.2 additional drag 'n' drop operation
filetype support (prc,pqa,pdb) with multiply selection
Redo-feature (repeated upload)
additional paramter (/REGISTER)
- v1.5 Text upload (with autoconversion)
PIA support
"out of memory" fix
- v1.6 Upload directly from the internet (using mime-types)
USB support
- v1.7 additional filelist
Helpsystem
Register/Unregister function (/REGISTER parameter removed)
support more than 10 files selected (bug)
- v1.8 Install midi (*.mid) to system database (alarm)
Fix USB detect for old desktop software
Fix filesize bug
- v1.9 Copy installed files to backup directory (with Installation history)
Adjust PDA time

Pilot Install

© Copyright 2000 Ralf Dietrich – envi.com

<http://pinstall.envicon.com>

email: pinstall@envicon.com

HotSync, Palm, Handspring, Visor, TRG are registered Trademark by the respective owners.

Error messages:

"unknown format of file"

The format of the desktop file is unknown. If you need this file, please send it to pinstall@envicon.com

"Device full Free memory: x KB of x KB"

Can't install file, because the memory on the device is full

"Connection lost"

Connection to the device is lost (timeout)

"PIA: Need color device to install: x Archiv ignored."

PIA archiv need color device (and the current device has not)
The complete contents of the archiv is ignored.

"PIA: Need DragonballEZ CPU to install x Archiv skipped."

PIA archiv Dragonball EZ CPU (and the current device has not)
The complete contents of the archiv is ignored.

"PIA: OS-Version x required Archive skipped"

The OS-Version of the current device is to low for the PIA achiv
The complete contents of the archiv is ignored.

"File was in MIDI-format, but was to big (64 KB) or more than one voice."

The Palm OS supports only one voice (instrument) midi files with max. 64 KB size.

PILOT INSTALL LICENSE AGREEMENT

Redistribution Or Rental Is Not Permitted

The following terms apply to Pilot Install the software. This document is a part of it and may not be removed, if the software is offered for download, copied etc.

1. envi.con grants Licensee a non-exclusive and non-transferable license to reproduce and use for personal or internal business purposes the executable code version of the Product, provided any copy must contain all of the original proprietary notices.

This license does not entitle Licensee to receive from envi.con hard-copy documentation, technical support, telephone assistance, or enhancements or updates to the Product. Licensee may not customize the Product unless Licensee has also licensed commercial version of Pilot Install.

Licensee may not redistribute the Product unless Licensee has separately entered into a distribution agreement with envi.con such as the Unlimited Distribution Program Agreement.

3. RESTRICTIONS.

Licensee may not:

- (i) modify or create any derivative works of the Product or documentation, including translation or localization;
- (ii) decompile, disassemble, reverse engineer, or otherwise attempt to derive the source code for the Product (except to the extent applicable laws specifically prohibit such restriction);
- (iii) redistribute, encumber, sell, rent, lease, sublicense, or otherwise transfer rights to the Product;
- (iv) remove or alter any trademark, logo, copyright or other proprietary notices, legends, symbols or labels in the Product; or
- (v) publish any results of benchmark tests run on the Product to a third party without envi.con prior written consent.

4. FEES.

There is no license fee for the Product. If Licensee wishes to receive the Product on media, there may be a small charge for the media and for shipping and handling. Licensee is responsible for any and all taxes.

5. TERMINATION.

Without prejudice to any other rights, envi.con may terminate this Agreement if Licensee breaches any of its terms and conditions. Upon termination, Licensee shall destroy all copies of the Product.

6. PROPRIETARY RIGHTS.

Title, ownership rights, and intellectual property rights in the Product shall remain in envi.con and/or its suppliers. Licensee acknowledges such ownership and intellectual property rights and will not take any action to jeopardize, limit or interfere in any manner with envi.con or its suppliers' ownership of or rights with respect to the Product.

The Product is protected by copyright and other intellectual property laws and by international treaties. Title and related rights in the content accessed through the Product is the property of the applicable content owner and is protected by applicable law. The license granted under this Agreement gives Licensee no rights to such content.

7. DISCLAIMER OF WARRANTY. THE PRODUCT IS PROVIDED FREE OF CHARGE, AND,

THEREFORE, ON AN "AS IS" BASIS, WITHOUT WARRANTY OF ANY KIND, INCLUDING WITHOUT LIMITATION THE WARRANTIES THAT IT IS FREE OF DEFECTS, MERCHANTABILITY, FIT FOR A PARTICULAR PURPOSE OR NON-INFRINGEMENT. THE ENTIRE RISK AS TO THE QUALITY AND PERFORMANCE OF THE PRODUCT IS BORNE BY LICENSEE. SHOULD THE PRODUCT PROVE DEFECTIVE IN ANY RESPECT, LICENSEE AND NOT LICENSOR OR ITS SUPPLIERS OR RESELLERS ASSUMES THE ENTIRE COST OF ANY SERVICE AND REPAIR. IN ADDITION, THE SECURITY MECHANISMS IMPLEMENTED BY THE PRODUCT HAVE INHERENT LIMITATIONS, AND LICENSEE MUST DETERMINE THAT THE PRODUCT SUFFICIENTLY MEETS ITS REQUIREMENTS. THIS DISCLAIMER OF WARRANTY CONSTITUTES AN ESSENTIAL PART OF THIS AGREEMENT. NO USE OF THE PRODUCT IS AUTHORIZED HEREUNDER EXCEPT UNDER THIS DISCLAIMER.

8. LIMITATION OF LIABILITY. TO THE MAXIMUM EXTENT PERMITTED BY APPLICABLE LAW, IN NO EVENT WILL LICENSOR OR ITS SUPPLIERS OR RESELLERS BE LIABLE FOR ANY INDIRECT, SPECIAL, INCIDENTAL OR CONSEQUENTIAL DAMAGES ARISING OUT OF THE USE OF OR INABILITY TO USE THE PRODUCT, INCLUDING, WITHOUT LIMITATION, DAMAGES FOR LOSS OF GOODWILL, WORK STOPPAGE, COMPUTER FAILURE OR MALFUNCTION, OR ANY AND ALL OTHER COMMERCIAL DAMAGES OR LOSSES, EVEN IF ADVISED OF THE POSSIBILITY THEREOF, AND REGARDLESS OF THE LEGAL OR EQUITABLE THEORY (CONTRACT, TORT OR OTHERWISE) UPON WHICH THE CLAIM IS BASED. IN ANY CASE, LICENSOR'S ENTIRE LIABILITY UNDER ANY PROVISION OF THIS AGREEMENT SHALL NOT EXCEED IN THE AGGREGATE THE SUM OF THE FEES LICENSEE PAID FOR THIS LICENSE (IF ANY) AND FEES FOR SUPPORT OF THE PRODUCT RECEIVED BY ENVI.CON UNDER A SEPARATE SUPPORT AGREEMENT (IF ANY), WITH THE EXCEPTION OF DEATH OR PERSONAL INJURY CAUSED BY THE NEGLIGENCE OF LICENSOR TO THE EXTENT APPLICABLE LAW PROHIBITS THE LIMITATION OF DAMAGES IN SUCH CASES.

SOME

JURISDICTIONS DO NOT ALLOW THE EXCLUSION OR LIMITATION OF INCIDENTAL OR CONSEQUENTIAL DAMAGES, SO THIS EXCLUSION AND LIMITATION MAY NOT BE APPLICABLE. NETSCAPE IS NOT RESPONSIBLE FOR ANY LIABILITY ARISING OUT OF CONTENT PROVIDED BY LICENSEE OR A THIRD PARTY THAT IS ACCESSED THROUGH THE PRODUCT AND/OR ANY MATERIAL LINKED THROUGH SUCH CONTENT.

Command-line options

/TITLE Display a text (blank spaces must quoted) e.g. /TITLE "test me"
/CLOSE Close on finish
/IGNOREHS Dont close HotSync if running
/COMx Select port COMx while x is 1 to 8, e.g. /COM1
/USB Select USB

All other parameter treated as [palm files](#) to install.

The result of the transmission can be found in the registry under:
HKEY_CURRENT_USER\Software\Pilot Install\Install\Result
where is

-2 canceled by user
-1 not transfered (timeout)
0 sucessfull

Known bugs

- Limit on 9600 baud with palm pro (missing ack -DLP v1.0)
- repeated upload with USB works only if select another port between the syncs

Features

- works WITHOUT HotSync
- Install directly from the web ([Example](#))
- converts plain text files to the DOC format (on the fly)
- installs MIDI sounds to your system MIDI database
- desktop install replacement
- You can select the speed up to 256000 baud
- Multiupload
- can execute from the [command-line](#)
- time measure (and current transfer display)
- no dll needed (You can use it in your installer...)
- drag and drop

What is PIA?

The central object is the Pilot Install Archive (file extension .pia), which contains all necessary data, files and information needed for the installation. A software developer can create such a Pilot Install Archive using the [PIA Creator](#). He just selects all files for his application and adds the information for it. PIA Creator will then create one pia-file, which can be distributed.

Pilot Install, the user application can handle the pia-file format and takes care that everything will be transferred to the Palm devices. It finds out the available memory on the device and checks if the application can be installed. If there is not enough space left the user will be informed and can interact.

PIA features:

- compression
- requirement checks (e.g. Color/Noncolor, Dragonball EZ CPU, OS version)
- Readme/License text on desktop
- Speed optimized transfer (as known as selfextracting file - SFX)

[Examples](#)

Default Installer for palm software

Within this, you register Pilot Install as the default installation method for palm pilot software. E.g. you can directly install any [palm files](#) by a simple doubleclick. This has no influence to the standard Install-tool - so you can use both.

This setting can easily be restored through the main menu options [unregister filetypes](#).

The following filetypes would be registered:

.PRC
.PDB
.PQA

Note: The extension TXT and MID would not be registered (to Pilot Install) in any case

Main menu

About

Show copyright information

Options

Filelist

Display the current files that would be installed.

Adjust PDA date/time

Sets the current desktop date and time to the device on every installation.

Copy to backup directory

Copy successful installed files to userspecific backup directory (see [Desktop integration](#))

Installation history

Display the [installation history](#) (logged from Pilot Install)

Register filetypes

Use Pilot Install as [default installer](#)

Unregister filetypes

Unregister Pilot Install as [default installer](#)

Help

Open this help.

Readme / License

This will display the readme or license included in [PIA](#)

Desktop integration

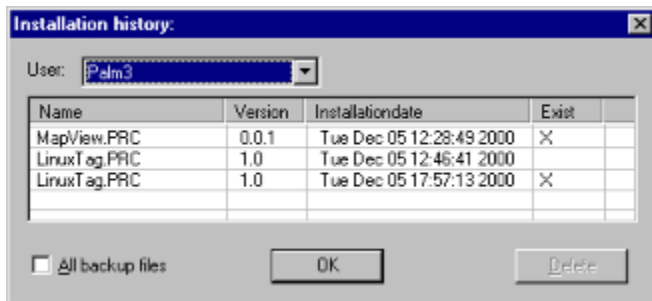
If the menu item Copy to backup directory is enabled, all successful installed palm files are copied to the userspecific backup directory (e.g. C:\Palm\Username\backup). If your palm device lost its contents (e.g. battery loss, hard reset), these backup directory will be used to restore all installed files. Pilot Install uses the same userspecific directory from the Palm Desktop Software - so if your device is never used with the Palm Desktop, no backup will be done!

This function also allows you to keep track of all installed files - see log-file (e.g. C:\Palm\Username\Pinstall.log).

Note: “*Copy to backup directory*” is disabled, if the Palm Desktop Software is not installed/couldn't be found

Note II: Installed MIDI sounds would not be stored (because they are added dynamically to the System database)

Installation history



This dialog helps you to keep track of the programs you installed on your device. If you install an application/database more than once, keep in mind that only the latest version will be stored (see “LinuxTag.PRC” - only one exist)

Make sure that you have selected your desired user.

User: All users from Palm Desktop

All backup files: Show all files backed up by HotSync, including files installed by Pilot Install

Delete: Remove backup file (not the log-entry) from your backup folder on the desktop, if exists (if you don't remove it from your PDA before starting HotSync again, it will be restored on next sync)

TIP: If an application crashes your PDA, delete its backup file to prevent reinstallation on next HotSync. Don't forget to delete this application on your PDA also.

Note: The log file can be found under the userspecific directory (e.g. C:\Palm\Username\Pinstall.log)

Note II: This function is only available, if the Palm Desktop is installed.

