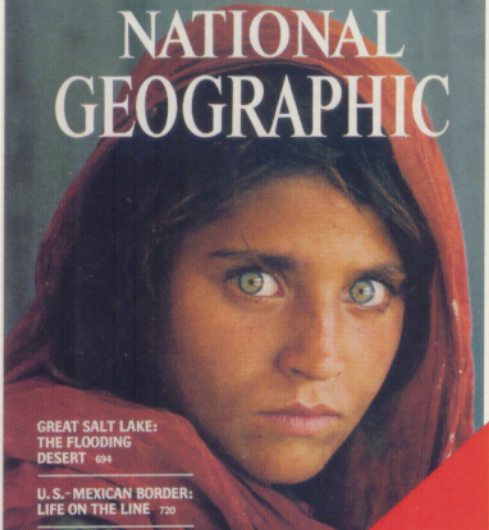


VOL. 167, NO. 6



JUNE 1985

NATIONAL GEOGRAPHIC



GREAT SALT LAKE:
THE FLOODING
DESERT 634

U. S. - MEXICAN BORDER:
LIFE ON THE LINE 720

JAVA'S WILDLIFE RETURNS 750

Along Afghanistan's
War-torn Frontier 77

FAIR SKIES FOR THE OYSTERMAN

The 1980s

Windows® 98/95 & Macintosh® CD-ROM

NATIONAL GEOGRAPHIC The 1980s

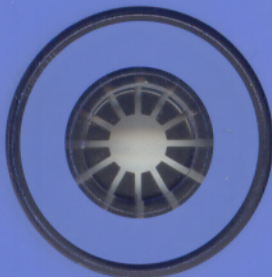
January 1980–April 1983

Windows® 95
Windows® 98
& Macintosh®
CD-ROM



QuickTime™

CNY744BE-CD25/I070hc



 NATIONAL
GEOGRAPHIC
.COM

Visit our Web site at
www.nationalgeographic.com

Distributed By:

 **Broderbund**

A Mattel Interactive Company
One Martha's Way
Hiawatha, IA 52233-0100
319.378.7319
www.mattelinteractive.com

©1888-2000 National Geographic Society. All rights reserved. Produced by nationalgeographic.com, Washington, D.C. 20036. NATIONAL GEOGRAPHIC, nationalgeographic.com, and the Yellow Border Design are registered trademarks ® or trademarks of National Geographic Society. Marcas Registradas. Distributed by Mattel Interactive, a division of Mattel, Inc. Broderbund is a trademark of Mattel Interactive. Macintosh is a registered trademark of Apple Computer, Inc. QuickTime and the QuickTime logo are trademarks used under license. All other trademarks and registered trademarks are the property of their respective holders. The Complete NATIONAL GEOGRAPHIC on CD-ROM was produced from an archive of magazines collected in a central repository and is not representative of any single regional edition of NATIONAL GEOGRAPHIC magazine.

USE OF THIS PRODUCT IS SUBJECT TO CERTAIN

RESTRICTIONS AND LIMITATIONS OF WARRANTY

UNDER THE LICENSE AGREEMENT

CONTAINED HEREIN.



NATIONAL GEOGRAPHIC

The 1980s

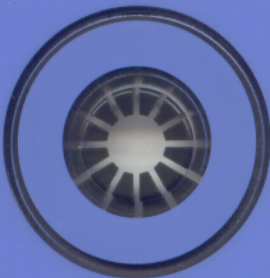
May 1983–August 1986

Windows[®] 95
Windows[®] 98
& Macintosh[®]
CD-ROM



QuickTime™

CNY744BE-CD26/1070hc



 NATIONAL
GEOGRAPHIC
.COM

Visit our Web site at
www.nationalgeographic.com

Distributed By:

 Broderbund™

A Mattel Interactive Company
One Marha's Way
Hiawatha, IA 52233-0100
319.378.7319
www.mattelinteractive.com

©1888-2000 National Geographic Society. All rights reserved. Produced by nationalgeographic.com, Washington, D.C. 20036. NATIONAL GEOGRAPHIC, nationalgeographic.com, and the Yellow Border Design are registered trademarks ® or trademarks of National Geographic Society. Marcas Registradas. Distributed by Mattel Interactive, a division of Mattel, Inc. Broderbund is a trademark of Mattel Interactive. Macintosh is a registered trademark of Apple Computer, Inc. QuickTime and the QuickTime logo are trademarks used under license. All other trademarks and registered trademarks are the property of their respective holders. The Complete NATIONAL GEOGRAPHIC on CD-ROM was produced from an archive of magazines collected in a central repository and is not representative of any single regional edition of NATIONAL GEOGRAPHIC magazine. USE OF THIS PRODUCT IS SUBJECT TO CERTAIN RESTRICTIONS AND LIMITATIONS OF WARRANTY UNDER THE LICENSE AGREEMENT CONTAINED HEREIN.



NATIONAL GEOGRAPHIC The 1980s

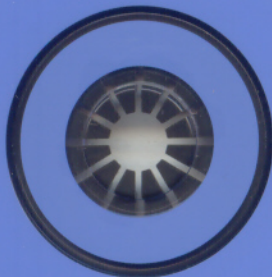
September 1986–December 1989

Windows® 95
Windows® 98
& Macintosh®
CD-ROM



QuickTime™

CNY7448E-CD27/1070hc



 NATIONAL
GEOGRAPHIC
.COM

Visit our Web site at
www.nationalgeographic.com

Distributed By:

 Broderbund™

A Mattel Interactive Company
One Martha's Way
Hiawatha, IA 52233-0100
319.378.7319
www.mattelinteractive.com

©1988-2000 National Geographic Society. All rights reserved. Produced by nationalgeographic.com, Washington, D.C. 20036. NATIONAL GEOGRAPHIC, nationalgeographic.com, and the Yellow Border Design are registered trademarks © or trademarks of National Geographic Society. Marcos Registradas. Distributed by Mattel Interactive, a division of Mattel, Inc. Broderbund is a trademark of Mattel Interactive.

Macintosh is a registered trademark of Apple Computer, Inc. QuickTime and the QuickTime logo are trademarks used under license. All other trademarks and registered trademarks are the property of their respective holders. The Complete NATIONAL GEOGRAPHIC on CD-ROM was produced from an archive of magazines collected in a central repository and is not representative of any single regional edition of NATIONAL GEOGRAPHIC magazine. USE OF THIS PRODUCT IS SUBJECT TO CERTAIN

RESTRICTIONS AND LIMITATIONS OF WARRANTY
UNDER THE LICENSE AGREEMENT
CONTAINED HEREIN.



A Decade of NATIONAL GEOGRAPHIC Magazine on CD-ROM

Every page, every issue... Search with Bob Ballard for the haunting wreckage of the *Titanic*, two and a half miles beneath the surface of the North Atlantic. Trek to the North Pole with Will Steger, the first since Robert Peary to make the journey without resupplying. Look back at May 18, 1980, as Mount St. Helens erupts with the force of an atomic bomb. And experience many more captivating moments from the 1980s.

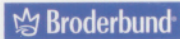
NATIONAL GEOGRAPHIC: *The 1980s* brings the decade's award-winning photographs and compelling stories to your computer.

- Discover every fascinating article from the 1980s.
- Print every page in black and white or color.
- Search effortlessly for the exact information you need with a top-notch search engine.

USE OF THIS PRODUCT IS SUBJECT TO THE ACCEPTANCE OF THE LICENSE AGREEMENT AND LIMITED WARRANTY CONTAINED ON THE CD-ROM.



Distributed By:



88 Rowland Way
Novato, CA 94945
(415) 895-2000

www.broderbund.com

PROUDLY SPONSORED BY



Kodak
Picture CD

www.kodak.com



QuickTime™

**NATIONAL
GEOGRAPHIC**
INTERACTIVE

Visit our Web site at
www.nationalgeographic.com

© 1988-1999 National Geographic Society. All rights reserved. Produced by National Geographic Interactive, Washington, D.C. 20036. NATIONAL GEOGRAPHIC, National Geographic Interactive, and the Yellow Border Design are registered trademarks ® of National Geographic Society. Marcas Registradas. Distributed by The Learning Company, and its subsidiaries. Broderbund and the Broderbund logo are registered trademarks of The Learning Company. Kodak is a trademark of Eastman Kodak Company. Windows is a registered trademark or trademark of Microsoft Corp. in the United States and/or other countries. Macintosh is a registered trademark of Apple Computer, Inc. QuickTime and the QuickTime logo are trademarks used under license. QuickTime is registered in the U.S. and other countries. All other trademarks and registered trademarks are the property of their respective holders. The Complete NATIONAL GEOGRAPHIC on CD-ROM was produced from an archive of magazines collected in a central repository and is not representative of any single regional edition of NATIONAL GEOGRAPHIC magazine.

Windows® 98/95: •Pentium® 90MHz or faster •24MB RAM •70MB free hard-disk space •SVGA video card supporting 16-bit color •16-bit sound card and speakers
4x CD-ROM drive Optional: •Printer •14.4 Kbps modem for Internet access •25MB hard-disk space for AOL software installation **Macintosh®:** •PowerPC or higher •System 7.5 or higher •32MB RAM •70MB free hard-disk space •640x480 16-bit color monitor •4x CD-ROM drive **Optional:** •Printer •14.4 Kbps modem for Internet access.
User is responsible for Internet fees and telephone charges.

CNY7AE-BU079ac