

## Windows Grep Help

Welcome to Windows Grep 1.41, the powerful text search utility for Microsoft Windows 3.1.

Select the topic you want help on:

[Introduction](#)

[Toolbars](#)

[Menu](#)

[Status bar](#)

[Searching](#)

[Configuration](#)

[Shareware information](#)

[Miscellaneous notes](#)

[Using Windows Grep with SpexEdit](#)

## Introduction

Windows [Grep](#) is a versatile utility for searching disk files for text strings. In addition to searching pure ASCII files such as program source code files like traditional Grep utilities, Windows Grep can also search any type of binary file, such as word-processor, spreadsheet and database files.

Windows Grep is a MDI application which features toolbars to speed operation and a status bar. It can be driven using the menu system or the toolbars. It is best used with a mouse. There are two types of windows opened in the MDI frame. Results from searches are output in [result windows](#). Files loaded for viewing are shown in [view windows](#).

To perform a search, the string to find and the file(s) to search must be entered. This is normally done by selecting **File|Search...** from the menu, or clicking on the search (magnifying glass) button on the toolbar.

Pressing the **OK** button in the search criteria dialog box opens a result window and starts the search. If matches are found in text files, lines that contain the specified string will be displayed in the new window. If matches are found in binary files, the match will be shown +/- a user specified number of characters.

During the search, progress statistics are shown in a modeless dialog box. The search can be stopped at any time by clicking on the **Cancel** button, or pressing Enter. Pressing the **Skip** button will skip over any files in the current directory yet to be searched. Final statistics will be shown when the search is complete.

Double-clicking on text in a result window causes one of four actions to occur:

- The file from which the line clicked on came is loaded into a view window.
- The application that originally created the file is run.
- An external viewer/editor command is executed.
- A dialog is displayed to allow one of the above three choices to be picked.

The action taken is set by selecting **File|Configure...** from the menu, or clicking on the configure (spanner) button on the toolbar. It is possible to have different actions set for text and binary files.

Text in either a result window or view window can be output to the printer by selecting **File|Print...** from the menu or clicking on the print (printer) button on the toolbar.

The text can be saved to disk by selecting **File|Save As...** from the menu or clicking on the save (disk) button on the toolbar.

Files may be loaded directly into a view window by selecting **File|Open...** from the menu or clicking on the open (folder) button on the toolbar. Matches found in the file will be shown as it is loaded. Once loaded, the search criteria can be modified by selecting **File|Criteria...** from the menu or clicking on the change criteria button (magnifying glass with question mark).

Windows Grep can be iconised whilst it is searching. The icon caption changes from **Windows Grep - Searching** to **Windows Grep - Finished** when the search is complete, and a message box is displayed.

Windows Grep also supports drag-drop from the File Manager, has a File Manager extension DLL and a command line interface. See the relevant sections in this help file for more information.

---

Related topics:

[Toolbars](#)  
[Menu](#)  
[Searching](#)

[Configuration](#)

[Command line interface](#)

[Drag-drop](#)

[File Manager extension](#)

## Status Bar

The status bar gives instructions and shows statistics about searches. It is divided into either 2 or 3 sections, depending on the child toolbar positions.

From left to right:

Section 1 gives an explanation of the function of each menu item, and the status of the program during printing and searching.

Section 2 shows the current search string, or a portion of it if it will not all fit.

Section 3 shows statistics about the active window. If the active window is a [result window](#), the total number of matches, the number of files searched and the number of files containing matches is listed. If it is a [view window](#), the string currently highlighted and number of matches in the file being viewed is listed

If the child toolbars are horizontal, section 3 is not shown. Instead, the information it would contain is shown on the child toolbars.

## Searching

Searching of one or more files is performed by one of five methods:

- Pressing the search button on the toolbar
- Selecting **File|Search...** from the menu
- Dragging files from the File Manager to the main window
- Using the File Manager extension
- Supplying parameters on the Windows Grep command line

In the first four methods a dialog is presented which allows search criteria to be specified and options that affect the search to be set. Clicking the **OK** in the dialog initiates the search.

In the last method, the search criteria is specified on the command line and the search is initiated as soon as the program starts up.

Additionally, a single file can be loaded into a view window by pressing the open button on the toolbar, or selecting **File|Open** from the menu. This will result in that file being searched as it is loaded, showing all occurrences of the current search string (shown on the status bar).

---

Related topics:

[Search criteria dialog box](#)

[Drag-drop](#)

[File Manager extension](#)

[Command line interface](#)

[Regular expressions](#)

## Configuring

Many aspects of the operation of Windows Grep can be changed using the configuration dialog, including:

- Color and font of text used in the result and view windows
- Tab width
- Size of binary 'window' shown either side of matches in binary files
- Action to take when double-clicking on matches from text and binary files
- Positions of the main and child toolbars
- Actions taken when Windows Grep is first started

Configuration changes are saved between sessions.

---

Related topics:

[Configuration dialog box](#)

## Shareware Information

Windows Grep is distributed as Shareware. It is not free or public domain. This means you may copy and distribute it freely but should you find it useful and use it beyond an initial evaluation period of 30 days you are both legally and morally obliged to pay the license fee.

The single user license fee is **£10.00** or **US\$20**.

Please enquire for site license rates on quantities above 5.

There are two ways to register this program:

1. If you have access to CompuServe, you can register on-line using SWREG. Simply type GO SWREG and follow the instructions. Enter Windows Grep's ID # **306** when prompted. The \$20 will be charged to your CompuServe account, and I will inform you of your registration number by e-mail, usually within 24 hours.
2. By Mail. Checks can be accepted in any major currency, equivalent in value to US\$20.

[Click here for registration form](#)

Registered users will be sent a registration number to disable the reminder box, and will be informed of any upgrades that may become available.

I would be pleased to receive any comments, bug reports or suggestions for future releases. I may be contacted by e-mail at the addresses below:

Internet/CIX: huwmill@cix.compulink.co.uk  
CompuServe: 100016,3452

---

Related topics:

[Acknowledgements](#)

[Shareware registration form](#)

[Entering your registration information](#)

## Registering

To personalise your copy of Windows Grep once you have registered it and received your code:

- Select **File|Register...** from the menu to display the registration dialog box.
- Enter your name and number EXACTLY as you receive them. The name is case sensitive.
- Press OK.

The Shareware reminder box will no longer be displayed and you may continue to use Windows Grep after the 30 day trial period.

---

Related topics:

[Shareware information](#)

[Shareware registration form](#)



## Command Line Interface

Windows Grep supports command line parameters to allow it to be used from one of the many Windows command line interface programs.

The syntax is as follows:

```
WGREP [<options>] <string> <filespec>
```

<options> are optional and must appear on the command line before the other parameters.

The options provided are:

/i	Ignore case	/i-	Don't ignore case
/n	Number lines	/n-	Don't number lines
/v	Invert match	/v-	Don't invert match
/r	Recurse sub directories	/r-	Don't recurse sub directories
/ac	Count matches only		
/af	Show first match only		
/an	Show names of files with matches only		
/aa	Display all matches		

If no options are specified the values saved from previous searches are used.

The <string> and <filespec> parameters are mandatory.

If the parameters are all correct then the search will be initiated as soon as the program is started. If any are missing or incorrect, the program starts up normally.

[Click here for some command line examples](#)

For more information about the parameters and their meanings see [Search criteria dialog box](#)

---

Related topics:

[Search criteria dialog box](#)  
[Drag-drop](#)

## Drag-Drop

Windows Grep supports drag-drop as both a client and a server.

To initiate a search from the File Manager, using drag-drop:

- Select the file(s) you want to search in File Manager
- Drag them to the Windows Grep window or icon, and release the mouse button
- A modified search criteria dialog box is now displayed. Enter the string to search for and any options in this dialog and press OK
- The files selected will be searched as normal

To drop a file found to contain matches onto a running application:

- Click on a line from the file to be dropped in a result window
- Drag the mouse (the icon changes to a piece of paper), and drop onto any drag-drop client, such as Program Manager, Write, Notepad, Borland Pascal, etc.

To quickly search a file already searched, with different criteria:

- Click on a line from the file to be searched in a result window
- Drop onto the title bar of Windows Grep

To load a file into an open view window:

- Click on a line from the file to be viewed in a result window
- Drop onto the view window. The file will be loaded and all matches of the string set up for that window will be highlighted

This version of Windows Grep acts as a drag-drop server for single files only.

---

Related topics:

[Drag drop search criteria dialog box](#)

## File Manager Extension

Windows Grep comes equipped with a File Manager Extension Dynamic Link Library (DLL) that provides an additional menu item on the File Manager's main menu.

To install the extension, select **Install File Manager Extension** in the **Configuration** dialog box. This will add a line to WinFile.INI to instruct the File Manager to load the extension the next time it is run.

When installed, an additional item **Grep** will be available on the File Manager's main menu which will have a sub-menu with two items:

### **Grep|Search**

Search the currently highlighted files. This will be grayed out until one or more files are selected.

### **Grep|About...**

Display information about the extension DLL.

To use the extension:

- Select one or more files in the File Manager window as usual
- Select **Grep|Search** from File Manager's menu
- A modified search criteria dialog box will be displayed. Enter the search criteria, and press OK
- The selected files will be searched and matches shown in the usual way.

---

Related topics:

[Configuration dialog box](#)

[File Manager search criteria dialog box](#)

## Miscellaneous Notes

### Toolbar button style

Normally, unavailable buttons are shown with their bitmaps grayed-out. If you prefer the Microsoft Access look, where unavailable buttons are hidden, add the following line in the [Configuration] section of WGREP.INI:

```
HideToolbarButtons=1
```

### Upgrading from previous versions of Windows Grep

If you have used versions of Windows Grep prior to v1.4, you may notice that the structure of WGREP.INI has been tidied up. Thus, all your previous settings will be lost. If you have not registered Windows Grep, it may be an idea to delete the old copy and let v1.4 create a fresh one. If you have registered, you may want delete all lines in the [Windows Grep] section EXCEPT the **name=** and **number=** ones to prevent confusion when you examine the file.

### Outstanding problems

There is one outstanding problem that I cannot fix. If the Windows Grep File Manager extension is the only extension being loaded by File Manager, it does not always appear on File Manager's menu bar. Adding more extensions, such as the DOS 6 one, 'cures' the problem and the Grep item appears. If anyone has any clues as to why this is happening, I'd be grateful of a solution!

## Using Windows Grep with SpexEdit

SpexEdit is a Windows text editor. This release of Windows Grep is SpexEdit-aware, thus allowing SpexEdit to be 'driven' in much the same way as the internal text file viewer.

To use SpexEdit with Windows Grep, simply put the full path name of the SpexEdit executable in the **Text viewer command** edit box in the configuration dialog box. For example, if SpexEdit has been installed in the directory c:\spexedit, enter:

```
C:\SPEXEDIT\SPEXEDIT.EXE
```

and select **Execute command below** as the **Text file double-click action**.

Then, when lines are double-clicked on in result windows, SpexEdit will be launched with the file loaded and the line clicked-on will be highlighted. Subsequent double-clicks on lines from the same file will move the highlight in SpexEdit. Double-clicks on lines from other files will instruct SpexEdit to load the new file.

SpexEdit Lite, the Shareware version of SpexEdit should be available from the same source that you obtained Windows Grep from, and can be registered for \$20. SpexEdit is the companion product to Spex, a C++ browser that supports AT&T v2.2 and all Microsoft extensions. Unlike other browsers, Spex is not dependent upon a host compiler, can browse code that doesn't compile, can browse any library code, and can browse classes, globals, and macros.

For further information about Spex, SpexEdit and SpexEdit Lite, contact Kevin Donn on CompuServe 71532,403 or at Little Wing, 4618 John F. Kennedy Blvd., Ste. 176, N. Little Rock, AR 72116. Phone: (501) 771-2408.

---

Related topics:

[Configuration dialog box](#)

## Thanks!

Thanks again for registering Windows Grep. You can be assured that your support for this program will encourage me to continue its development and enhancement.

Don't forget you can now disable the splash-screen from the configure dialog if you want to.

If you have any comments or suggestions for future releases, please let me know, preferably by e-mail.

Huw Millington  
West Sussex, England  
June 1993.

huwmill@cix.compulink.co.uk  
100016,3452 on CompuServe

## Grep

Grep is an UNIX acronym for **G**lobal **R**egular **E**xpression **P**arser

## Result Window

Result windows show results from searches. Matches found are shown in a different colour text. Search statistics are shown either on the window toolbar or on the status bar.



## View Window

View windows display the contents of text or binary files after a line in a [result window](#) has been double-clicked on, or a file has been loaded using the **File|Open...** command. All matches in the file are shown in a different colour text. The number of matches in the file is shown either on the window toolbar or on the status bar.

## Acknowledgements

I would like to thank the following people, whose help has been invaluable during the development of Windows Grep:

Chris Roberts for GREP.DLL. The DLL provides the regular expression compiler and parser. Chris can be contacted at 70550,2601 on CompuServe or 22092 San Fernando Court, Cupertino, CA 95014, USA.

Trevor Prinn (tprinn@cix.compulink.co.uk) for the registration unit.

The many beta testers on the CIX conferencing system who have helped to ensure this program is (hopefully) bug-free.

## Command line examples

```
WGREP Win *.PAS
```

Search all Pascal source files in the current directory for the string "Win" using parameters set up last search.

```
WGREP /i Grep *.C
```

Search all C source files for the string "Grep", ignoring case.

```
WGREP /af /n- Hello *.DOC
```

Search for "Hello" in all document files; do not number lines and shown first match only.

```
WGREP /aa /v a *.TXT
```

Display all lines that do NOT contain the letter a in \*.TXT files.

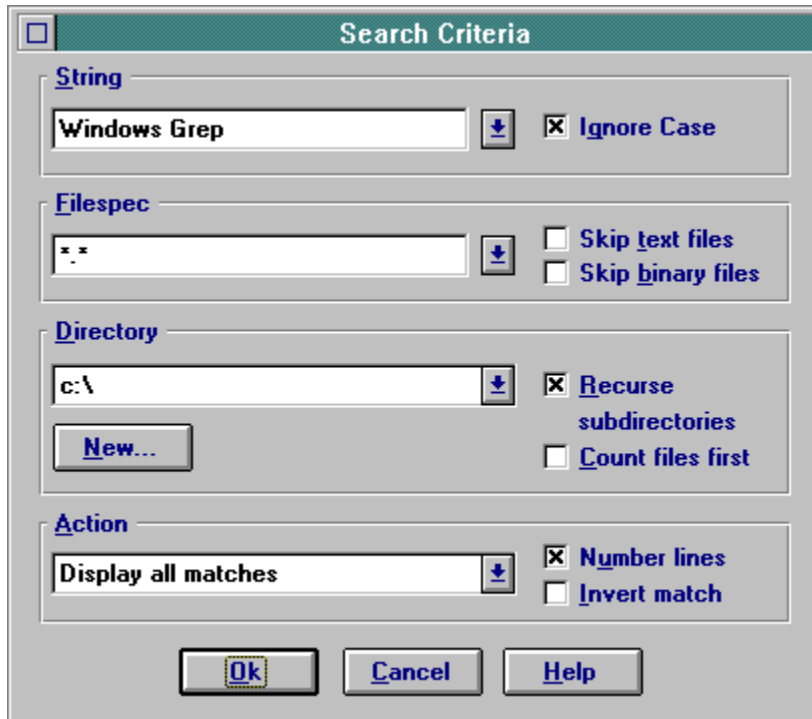
Note that settings are preserved between executions. For example, once /n- has been specified in example 3, it will be remembered for example 4 and all subsequent searches, and would have to be cancelled by adding /n to one of their command lines.



## Search Criteria Dialog Box

This dialog box is displayed when a search is initiated by selecting **File|Search...** from the menu or pressing the magnifying-glass button on the toolbar.

Click on the area of the dialog you want help on:



## Search Criteria Dialog Box

This dialog box is displayed when a search is initiated by drag-drop, the File Manager extension, or when changing criteria once a file has been loaded into a view window.

Click on the area of the dialog you want help on:



## String

Enter the string to locate in this edit box. It can be up to 255 characters and may contain regular expression characters. The last 10 strings entered can be recalled by pressing the down arrow button on the right.

---

Related topics:

[Regular expressions](#)

## Filespec

Enter the file(s) to search in this edit box. You can enter DOS wild cards (\* and ?) to search multiple files, or specify several discreet filenames separated by semicolons. The last 10 file specs entered can be recalled by pressing the down arrow button on the right.

Examples:

*.PAS	Search all Pascal source files
*.C;*.H	Search all C source and header files
MEMO.TXT;TEST.TXT	Search memo.txt and text.txt
WGREP.DOC	Search the file wgrep.doc



## Directory

This shows the directory that the search will be started in. The last 10 directories entered can be recalled by pressing the down arrow button on the right. All directories under this one can be searched by selecting the **Recurse Subdirectories** option.

To start the search in a new directory, press the New... button below.

### [New search start directory](#)

Pressing this button displays a dialog to allow the directory to start the search in to be specified using a Windows 3.1 common file dialog.

## Search action

The choices in this combo-box provide options which affect the format of the information displayed when searching. The choices provided are:

### **Display all matches**

Display the names of files containing matches, all matches found and a count of matches.

### **Stop after first match**

Display the names of files containing matches and the first match only.

### **Count matches**

Display the names of files containing matches and a count of matches only.

### **Display names of files only**

Display the names of files containing matches only.

[Recurse sub directories](#)

Check this to have the search include files in sub directories below the one shown above. (default: on)

### Count files first

Check this to count files which meet the search criteria before searching them. This allows the search progress dialog box to display the total number of files to be searched, thus allowing the progress of the search to be determined. (default: on)

### Invert match

Check this to invert the search and show/count all lines that do NOT contain the search string. Note that this option has no meaning when binary files are searched. (default: off)

## Number lines

Check this option to have matches preceded with their line number in text files and offset in binary files. This option must be on for view window positioning to work. (default: on)

## Ignore case

Check this to cause string comparisons to ignore the case of the search string. (default: on)



OK

Press this button to accept the search criteria and commence the search.

Cancel

Press this button to cancel the dialog and return.

[Help](#)

Pressing this button gives quick access to this help screen.

### Skip text files

This option is available when \*.\* is specified as the filespec. Checking this option will cause all text files to be skipped, thus allowing all binary files to be searched.

### Skip binary files

This option is available when \*.\* is specified as the filespec. Checking this option will cause all binary files to be skipped. This is useful when you want to search all ASCII files with many different file extensions, but want to skip all binary files.



## Registration Form

Print this form and send it with your remittance to:

Huw Millington  
71 Woodbury Avenue  
East Grinstead  
W. Sussex  
RH19 3NY  
ENGLAND

Please give an e-Mail address if you have one so I can inform you of your registration code as soon as I receive your order, and give timely information on upgrades.

-----

Windows Grep v1.41 Registration Form.

I wish to register \_\_\_\_ copies of Windows Grep.

I enclose a check/P.O./money order for £\_\_\_\_\_ / \$\_\_\_\_\_  
(£10 / US\$20 per copy)

Name(s) \_\_\_\_\_  
(To appear in about box, continue on separate sheet if necessary)

Company \_\_\_\_\_

Address \_\_\_\_\_  
\_\_\_\_\_  
\_\_\_\_\_

Code \_\_\_\_\_

Country \_\_\_\_\_

E-Mail \_\_\_\_\_

I am currently using version \_\_\_\_\_ of Windows Grep.

I obtained Windows Grep from:  
\_\_\_\_\_

I have the following comments:  
\_\_\_\_\_

-----

Thank you!





## Configuration Dialog Box

Click on the area of the dialog you want help on:

The image shows a 'Configure' dialog box with several sections and controls:

- Internal Options:** Includes a checked checkbox for 'Re-use open view windows', a 'Tab width' spinner set to 3, and a 'Binary window' spinner set to 30.
- Colors:** A dropdown menu shows 'Normal text' with an 'Edit...' button next to it.
- Font:** A 'Change Font...' button.
- Text file double-click action:** Radio buttons for 'Load file into viewer', 'Launch associated application', 'Execute command below', and 'Ask after double-click'. The 'Execute command below' option is selected, with the command 'c:\ndw\deskdedit.exe \$f' in the text field below.
- Binary file double click action:** Radio buttons for 'Load file into viewer', 'Launch associated application', 'Execute command below', and 'Ask after double-click'. The 'Execute command below' option is selected, with the command 'c:\winutils\windump \$f \$o' in the text field below.
- Main toolbar position:** Radio buttons for 'None', 'Top', and 'Left'. 'Top' is selected.
- Child toolbar position:** Radio buttons for 'None', 'Top', and 'Left'. 'Top' is selected.
- Startup options:** Checkboxes for 'Display Splash-Screen', 'Change to saved directory', 'Activate search dialog', and 'Install File Manager extension'. The last three are checked.

On the right side of the dialog, there are buttons for 'Ok', 'Cancel', 'Help', and 'Less <<'. The 'Less <<' button is highlighted with a yellow border.

## Internal options

This panel provides control over the appearance and behaviour of result and view windows.

### Re-use internal view windows

This controls the behaviour of view windows.

Un-checked: Every time a line in a file is double-clicked on in a result window the file is loaded into a new view window.

Checked: If the line double-clicked on comes from a file already loaded into a view window, the text in the existing window is repositioned at the new line.

## Tab width

Enter the number of spaces to expand tabs in result and view windows.

## Binary window

This allows the number of characters shown either side of matches in binary files to be adjusted in the range 0-99.

### Text viewer options

The choice in this panel determines what action is taken when a line from a text file in a result window is double-clicked on.

[Load file into viewer](#)

Selecting this option causes the file containing the line double-clicked on to be loaded into a view window.

### Launch associated application

Selecting this causes the application which originally created the file double-clicked on to be started up with the file loaded.

Note that associations are set up by File Manager and stored in WIN.INI.



[Execute command below](#)

Selecting this causes the command in the edit box below to be executed when a line is double-clicked on.

### Ask after double-click

When this is selected, a dialog box will be presented after double-clicking to allow one of the above three choices to be picked.

## Text viewer command

Enter the command to be run when **Execute command below** is selected.

The format of the command is as follows:

```
program-name parameters
```

The parameters take the form of tokens that are given values after double-clicking. The following are available:

\$f	Name of the file containing the line double-clicked on
\$l	Number of the line double-clicked on
\$g	The Grep string used for the search
\$\$	a \$

Examples:

notepad.exe \$f	Run Notepad passing the name of the file containing the line double-clicked on
myedit.exe \$f \$l	Run MyEdit.exe passing filename and line number

---

Related topics:

[Using Windows Grep with SpexEdit](#)

## Colors

The color panel allows the colors used in the result and view windows to be changed

## Color list

Select the text color attribute you want to edit in this combo-box, then press the Edit... button. The color attributes that can be altered are:

Normal text	All non-matching text
Headers	Filenames, line numbers of matching lines, offsets in binary view windows
Matches	Matches in result windows and text view windows
Highlight bar	Background color of highlight bar in result windows
Highlight bar text	Color of non-matching text on highlight bar

## Color edit

Pressing this will bring up the standard Windows 3.1 color selection dialog to allow the color of the text attribute picked in the combo-box to the left to be changed.

## Font

The font panel allows the font used in result and view windows to be changed.

## Change font

Pressing this button will bring up the standard Windows 3.1 font selection dialog to allow the font used in result and view windows to be changed.



## Binary viewer options

The choice in this panel determines what action is taken when a line from a binary file in a result window is double-clicked on.

## Binary viewer command

Enter the command to be run when **Execute command below** is selected.

The format of the command is as follows:

program-name parameters

The parameters take the form of tokens that are given values after double-clicking. The following are available:

\$f	Name of the file containing the line double-clicked on
\$l	Offset of the match double-clicked on from beginning of file in decimal
\$o	Offset of the match double-clicked on from beginning of file in hexadecimal
\$m	The length of the match in decimal
\$g	The Grep string used for the search
\$\$	a \$

Examples:

write.exe \$f	Run Write passing the name of the file containing the line double-clicked on
windump.exe \$f \$l \$m	Run WinDump.exe passing filename, offset in decimal and the length of the match

OK

Pressing this button saves and activates the changes made.

Cancel

Pressing this button discards changes made and returns to previous settings.

[Help](#)

Pressing this button gives quick access this help screen.

## Main toolbar position

The position of the main toolbar can be set using this group of radio buttons. Note that changes will not take place until Windows Grep is re-started.

### Child toolbar position

The position of child toolbars can be set using this group of radio buttons. If you prefer not to have any child toolbars, the buttons that would have appeared on them will be available on the main toolbar. Changes to this setting affect all child windows subsequently opened, but existing child windows are not affected. The main toolbar will not be changed to reflect the new setting until Windows Grep is re-started.

## More/Less

Pressing this button enlarges and reduces the dialog to make the bottom groups of controls available.



## Start-up options

The controls in this panel affect the behaviour of Windows Grep when it is started up.

## Display splash-screen

Checking this option will cause the splash-screen to be displayed before Windows Grep can be used. Note that only registered users can turn it off.

### Change to saved directory

If this is checked, the directory control in the Search Criteria dialog box will display the directory the last search was started from. Otherwise, it will show the current directory, or any working directory set up for Windows Grep in the Program Manager.

### Activate search dialog

Checking this causes the Search Criteria dialog box to be automatically displayed when Windows Grep is started.

## [Install File Manager extension](#)

If this option is checked, an entry will be made in WinFile.INI which will make the Windows Grep File Manager extension available the next time the File Manager is started.

---

Related topics:

[Using the File Manager extension](#)

## Regular Expressions

Windows Grep supports a wide range of regular expression specifiers.

Click on the one you want help on:

<code>^</code>	<a href="#">Circumflex</a>
<code>\$</code>	<a href="#">Dollar</a>
<code>?</code>	<a href="#">Question mark</a>
<code>:</code>	<a href="#">Colon</a>
<code>*</code>	<a href="#">Asterisk</a>
<code>+</code>	<a href="#">Plus</a>
<code>-</code>	<a href="#">Minus</a>
<code>[ ]</code>	<a href="#">Square brackets</a>
<code>\</code>	<a href="#">Backslash</a>
<code>**</code>	<a href="#">Double asterisk</a>

[Click here for some regular expression examples](#)

## Regular Expression Examples

<code>^Windows</code>	matches lines starting with 'Windows'
<code>Grep\$</code>	matches lines ending with 'Grep'
<code>H??p</code>	matches 'Help', 'Hoop', 'Harp', etc.
<code>^W?n</code>	matches lines starting with 'Win', 'Won' etc.
<code>\\$</code>	matches a dollar sign
<code>fo*</code>	matches f, fo, foo, etc.
<code>fo+</code>	matches fo, foo, etc.
<code>[xyz]</code>	matches xx, xyz, etc.
<code>[^xyz]</code>	matches abc but not axb
<code>([0-9])</code>	matches (0), (7), (9) etc.
<code>([0-9]*)</code>	matches (), (0), (123), (2512), etc.
<code>[z-a]</code>	matches nothing
<code>Wi**s</code>	matches 'Windows', 'Winds', 'Wigs', 'Widjkejwkjekwjemekweks' etc.

## ^ Circumflex

A circumflex as the first character of the string constrains matches to start of lines.



## \$ Dollar

A dollar as the last character of the string constrains matches to end of lines.

## ? Question mark

A question mark anywhere in the string matches any single character.

## : Colon

A colon matches a class of characters described by the character following:

- :a matches any alphabetic, ignoring case
- :d matches digits
- :n matches alphanumerics, ignoring case
- : (: followed by a space) matches spaces, tabs and other control characters.

## \* Asterisk

An expression followed by a asterisk matches zero or more occurrences of that expression.

## + Plus

An expression followed by a plus sign matches one or more occurrences of that expression.

## - Minus

An expression followed by a minus sign optionally matches that expression.

## [ ] Square brackets

A string enclosed in square brackets matches any character in that string, but no others. If the first character of the string is a circumflex the expression matches any character except the characters in the string. A range of characters may be specified by two characters separated by a -.

## \ Backslash

A backslash quotes any character. This allows a search for a character that is usually a regular expression specifier.



## \*\* Double asterisks

Two asterisks together match any number of any character and is functionally equivalent to the DOS wild card (\*)

## Toolbars

The toolbars allow quick mouse access to Windows Grep's main functions.

There are two types of toolbar. The main toolbar, which is displayed in the main window, and child toolbars, which are displayed in each child window. Using the configuration dialog, it is possible to turn them on and off, and specify where they should be displayed: along the top of the windows or down the left hand side. If **Child Toolbar Position** is set to **None**, all buttons are available on the main toolbar.

Click on the button you want help on:

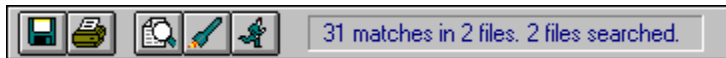
Main toolbar (when **Child Toolbar Position** option in **Configure** dialog is set to **None**):



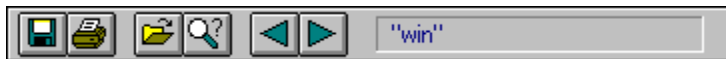
Main toolbar (when **Child Toolbar Position** option in **Configure** dialog is not set to **None**):



Child toolbar in result windows:



Child toolbar in view windows:



---

Related topics:

[Configuration](#)

## Search

Pressing this button initiates a search. It will be grayed out if a search is already in progress.

Equivalent menu command: **File|Search...**

---

Related topics:

[Searching](#)

## Configure

This button brings up the program configuration dialog. It will be grayed out if a search is in progress.

Equivalent menu command: **File|Configure...**

---

Related topics:

[Configuration](#)

## Save As

Pressing this button allows the text in the active window to be saved to disk. It will be grayed out if no windows are open or a search is in progress.

Equivalent menu command: **File|Save As...**

## Print

Press this button to print the text in the active window to the default printer. It will be grayed out if no windows are open or a search is in progress.

Equivalent menu command: **File|Print**

## Tile

This button will arrange all open windows so they do not overlap. It will be grayed out if no windows are open or a search is in progress.

Equivalent menu command: **Window|Tile**

## Stack

This button will stack all open windows vertically. It will be grayed out if no windows are open or a search is in progress.

Equivalent menu command: **Window|Stack**



## Cascade

This button will arrange all open windows so their title bars are visible. It will be grayed out if no windows are open or a search is in progress.

Equivalent menu command: **Window|Cascade**

[Help](#)

This button activates the help system, although you have probably found that out for yourself by now!

Equivalent menu command: **Help|Contents**

## Open

Pressing this button allows a file to be loaded into a view window, showing all occurrences of the current search string. It will be grayed out if a search is in progress.

Equivalent menu command: **File|Open...**

## Change search criteria

This button, available in view windows or when a view window is active, allows the search criteria to be changed so that the file currently loaded can be searched for a different search string.

Equivalent menu command: **File|Criteria...**

## View

This button, available in result windows or when a result window is active, will load the file which contains the highlighted line onto a view window. It will be grayed out on the main toolbar if a search is in progress, or a result window is not active.

Equivalent menu command: **Action|View**

## Launch

This button, available in result windows or when a result window is active, will launch the application associated with the file which contains the highlighted line to executed. It will be grayed out on the main toolbar if a search is in progress, or a result window is not active.

Equivalent menu command: **Action|Launch**

## [Execute command](#)

This button, available in result windows or when a result window is active, will execute the text or binary command, as appropriate, specified in the configuration dialog.

Equivalent menu command: **Action|Execute Command**

---

Related topics:

[Configuration](#)

## Previous match

Available in view windows and on the main toolbar when a view window is active, this button jumps to the previous match in the file. It will be grayed out on the main toolbar if a search is in progress, or a view window is not active.

Equivalent menu command: **Action|Previous Match**



## Next match

Available in view windows and on the main toolbar when a view window is active, this button jumps to the next match in the file. It will be grayed out on the main toolbar if a search is in progress, or a view window is not active.

Equivalent menu command: **Action|Next Match**

## Result window statistics

This section of the result window toolbar shows statistics about the search, including number of files searched, number of matches, number of files containing the matches and whether the search was completed. If the child toolbars have been turned off, or are vertical, these statistics are shown on the status bar in the main window.

### [View window statistics](#)

This section of the view window toolbar shows what search string is currently highlighted in the file, and the number of occurrences of that string (text files only). If the child toolbars have been turned off, or are vertical, these statistics are shown on the status bar in the main window.



# Menu

Select the menu item you want help on:

## File

- [Search...](#)
- [Configure...](#)
- [Criteria...](#)
- [Open...](#)
- [Save As...](#)
- [Print...](#)
- [Print Setup](#)
- [Register...](#)
- [Exit](#)

## Action

- [View](#)
- [Launch](#)
- [Execute Command](#)
- [Previous Match](#)
- [Next Match](#)

## Window


- [Tile](#)
- [Cascade](#)
- [Stack](#)
- [Arrange Icons](#)
- [Close All](#)

## Help

- [Contents](#)
- [About...](#)

[File|Search...](#)

This option displays the search criteria dialog box which is used to start a search.

Equivalent toolbar button: 


---

Related topics:

[Searching](#)

[File|Configure...](#)

This option gives access to the configuration dialog, where many aspects of Windows Grep can be changed.

Equivalent toolbar button: 

---

Related topics:

[Configuration](#)

[File|Criteria...](#)

This option is available only when a view window is active. It presents a dialog which allows the search criteria for the active view window to be altered.

Equivalent toolbar button: 

---

Related topics:

[Change criteria dialog box](#)




## File|Open...

Use this option to open a file and load it into a view window. If a view window is active, the file will be loaded into it. If not, a new view window will be opened. All matches found will be shown as the file is loaded

Equivalent toolbar button: 


[File|Save As...](#)

This option saves the text in the current window to disk.

Equivalent toolbar button: 

File|Print...

This option will print the text in the active window, in the same font and format as used in the window. Matches will be shown underlined on the printout.

Equivalent toolbar button: 

[File|Print Setup...](#)

This gives access to the Windows 3.1 printer setup dialog to allow the print destination to be selected before printing.

Equivalent toolbar button: None

[File|Register...](#)

Use this option to access the registration dialog once you have received your registration details.

Equivalent toolbar button: None

---

Related topics:

[Shareware information](#)

[Shareware registration form](#)

[Entering your registration information](#)


## File|Exit

This option exits Windows Grep, and is equivalent to the Close option on the system menu.

Equivalent toolbar button: None

## Action|View

Available only when a result window is active, this option will load the file which contains currently highlighted line into a view window.

Equivalent toolbar button: 

## Action|Launch

Available only when a result window is active, this option will launch the application associated with the file which contains the currently highlighted line. Associations are stored in WIN.INI and are set up using File Manager. See your Windows manual for more information.

Equivalent toolbar button: 



## Action|Execute Command

Available only when a result window is active, this option will execute one of the commands set up in the configuration dialog. The command executed will depend on whether the currently highlighted line comes from a text or binary file.

Equivalent toolbar button: 


---

Related topics:

[Configuration](#)


## Action|Previous Match

This option is available when a view window is active. It jumps to the previous match in the file currently loaded.

Equivalent toolbar button: 


## Action|Next Match

This option is available when a view window is active. It jumps to the next match in the file currently loaded.

Equivalent toolbar button: 


## Window|Tile

This option tiles the open windows, usually arranging them vertically.

Equivalent toolbar button: 


## Window|Cascade

This option cascades the open window, so that all title bars can be seen.

Equivalent toolbar button: 

Window|Stack

This option stacks the open windows horizontally.

Equivalent toolbar button: 

## Window|Arrange Icons

This option arranges the iconic windows at the bottom of the MDI window.

Equivalent toolbar button: None

Window|Close All


This option closes all open windows.

Equivalent toolbar button: None



[Help|Contents](#)

This option gives access to the Windows Grep help system.

Equivalent toolbar button: 

[Help|About...](#)

This option displays a dialog giving details of program and DLL versions, and copyright information.

Equivalent toolbar button: None



