

The Musical Instruments of the Symphonic Orchestra

Version 1.0, March 1, 1994

Copyright 1993-1994 by Plastronics Ltd. and InterActive Publishing Corporation

This file contains some last minute information about installing and using The Musical Instruments of the Symphonic Orchestra. Reading this file may help you improve the performance of the application on your computer.

1. RUNNING SLOWLY, OR RUNNING ON LOW MEMORY SYSTEMS

The Musical Instruments is a full-color full-size application. A lot of computer resources are used to achieve this level of visuality and functionality.

Although The Musical Instruments will run in low memory systems, it will run quite slowly (as is the case with many Multimedia applications). The more memory available to the application, the faster it will run.

If you find that The Musical Instruments runs slowly or if you encounter out-of-memory errors, consider doing the following:

- | Close all other running applications, while using The Musical Instruments.
- | If you use more than a 256-color driver for your display, you might want to use a different driver with less colors. This can be done through the Windows Setup program. See your Windows documentation for more information.
- | If you are running Windows in Enhanced mode, add virtual memory in a permanent swap file on your hard disk. This can be done through the 386 Enhanced control panel. See your Windows documentation for more information.
- | Defragment your hard disk by running a defragmentation program. If you are using MS-DOS 6.0 on your computer, this can be done by the DEFRAG utility that came with it. See your MS-DOS 6.0 documentation for more information.
- | If your computer is connected to network, disable sharing of directories and files from the network control panel. See your Windows documentation for more information.

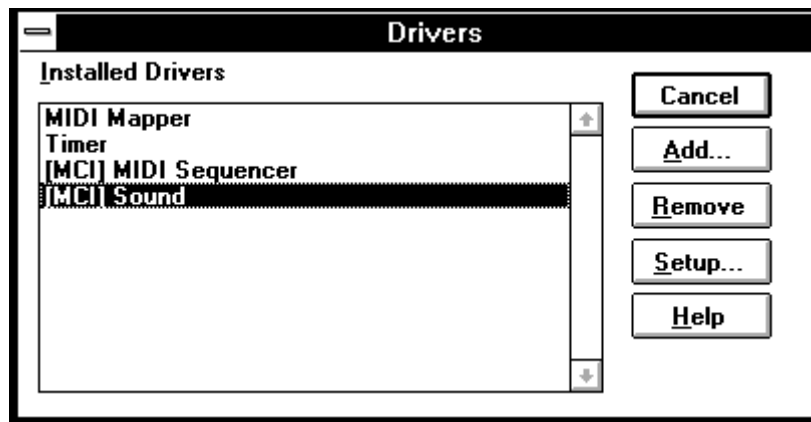
2. CD-ROM RELATED PROBLEMS

The Musical Instruments has several features which require accurate synchronization between the CD music and the application's actions. If you experience synchronization problems, please refer to section 1 in this document, for tips on optimizing the computer's performance.

Both the The Musical Instruments music and most of the program's files are located on its CD.

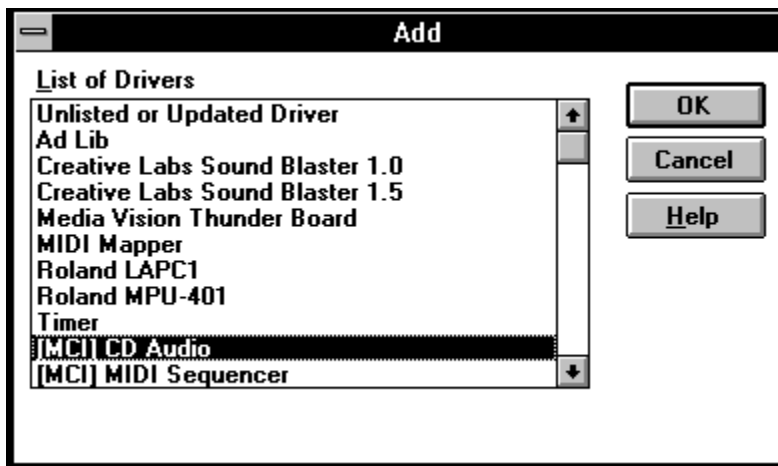
Removing The Musical Instruments CD from the CD-ROM drive while using the application, may affect its behavior. If you encounter problems while operating or installing The Musical Instruments, do the following:

- | Make sure that The Musical Instruments CD is correctly inserted into the CD-ROM drive.
- | If you use an external CD-ROM drive, make sure that the drive is connected properly to your computer, plugged in, and turned on. If you still see the error message after checking the points above, check the documentation that came with your CD-ROM drive or contact the company that supplied the drive.
- | Make sure that your CD-ROM drive is MPC-compatible. An MPC-compatible drive "has an average seek time of less than one second and can transfer data from the compact disc at 150K per second while using less than 40% of the CPU bandwidth." Check the documentation that came with your CD-ROM drive to make sure it meets these requirements. An incompatible CD-ROM drive will slow down the performance of the application.
- | If the The Musical Instruments music is not heard while opening the application, check to see if the MCI CD Audio driver is properly installed. Click the Drivers icon in the Control Panel to display this window. The installed drivers appear in a scrolling list box.



The Drivers Window

If "[MCI] CD Audio" does not appear in the list, click the Add button to display this dialog box:



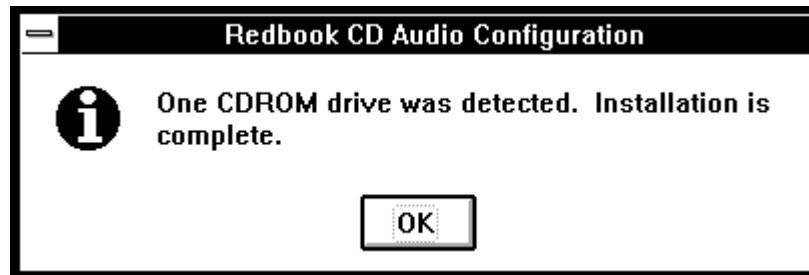
Adding the MCI CD Audio Driver

Highlight "[MCI] CD Audio" in the List of Drivers and click the OK button. You will be prompted to insert the Windows disk that contains the driver.



Insert the Windows Disk

After the driver is installed you will see this message.



Driver Successfully Installed

Windows is now set up to play CD audio. To listen to the CD, you can:

- | plug speakers or headphones into the front of your CD-ROM drive.
- | plug speakers or headphones into the appropriate jack on the sound card if you have one with an audio connection to your CD-ROM drive.

Most sound cards come with a "mixer" utility which enables you to adjust the volume of the CD. Make sure that it is set to a comfortable level.

3. AUDIO PROBLEMS AND AUDIO CARDS

The The Musical Instruments music is recorded on the CD in CD-Audio format. This means that you can play it through any CD Player, even if it is not connected to a computer. The Musical Instruments uses also other types of audio, which is recorded in computer format. These audio files require the presence of a MPC compliant audio card in order to play.

If you encounter audio related problems, do the following:

- | Make sure you have a MPC compliant audio card installed in your computer, along with its drivers. See your audio card's documentation for more information.
- | Some audio cards require that you connect both the audio card and the CD-ROM drive to speakers. If you do not hear the The Musical Instruments music, then check that the CD-ROM drive is connected to speakers, too.

- | Make sure that the volume for your speakers is set to an audible level.
- | Make sure that your CD-ROM drive is MPC-compatible. See section 2 above for the definition of the average seek time and average transfer rate that is expected from such CD drives.
- | Make sure that other applications do not try to play sound simultaneously with The Musical Instruments. If you are not sure whether this is the case or not, close all other active applications and see if the problem continues.
- | A few applications that play sounds, such as some screen savers, may remove audio capability from all other Windows applications. If you suspect you have such an application, deactivate it or do not run it while running The Musical Instruments.
- | Sounds that are distorted or "fuzzy" have several possible causes. The most likely one is simply that your speakers are not of high quality. It is also possible that the software settings on your sound board are causing distortion. For example, if the sound card volume or "WAVE file input" is set to near its maximum, it will produce amplification distortion, just as it would on a stereo system. To find out how to change your sound board settings, check the documentation that came with your sound board.
- | Make sure that the audio driver that came with your audio card has been installed on your system. This can be done through the control panels. See your Windows documentation for more information.

4. SCREEN MODES AND VIDEO CARDS

The Musical Instruments will run in 256-color or higher screen modes.

On a 640x480 screen the application will open in a full-screen window, hiding other windows behind it. You can switch to other applications through the Task List which is accessible by clicking the Escape key while holding down the Ctrl key. On larger screen resolutions The Musical Instruments will appear in a window that can be moved around the screen.

Note that The Musical Instruments is a color-intensive application. This means that it uses a full palette of 256-colors. If you are using The Musical Instruments in 256-color screen mode, switching to other applications, which may be using other color palettes may result in color-shift in the The Musical Instruments window. The color palette will restore to its default state when you activate The Musical Instruments window again. This problem is due to the way Windows manages colors, and will not occur on modes larger than 256-color.

Switching between screen modes (both resolution and colors) may be done through the Windows Setup program. See your Windows documentation for more information.

5. MOTION VIDEO PROBLEMS

Video for Windows is one of the most exciting technologies in the multimedia scope. Still, this technology is yet in its infancy, and is currently very limited. Most of the problems that you may encounter with Video for Windows segments in The Musical Instruments, are due to this state of the technology.

Because Video for Windows uses a lot of the computer resources (like memory and CPU time), it is very likely that you can improve the quality of the video segments, by adjusting several factors:

- | Close all other running applications, while using The Musical Instruments.
- | If you use more than a 256-color driver for your display, you might want to use a different driver with less colors. This can be done through the Windows Setup program. See your Windows documentation for more information.
- | Make sure that your CD-ROM drive is MPC-compatible. See section 2 above for the definition of the average seek time and average transfer rate that is expected from such CD drives. The transfer rate of the CD is very crucial to the quality of the displayed video, because The Musical Instruments reads the video files from the CD as they are displayed (in real time).
- | If your computer is connected to network, disable sharing of directories and files from the network control panel. See your Windows documentation for more information.

6. FINAL NOTE

We encourage you to fill out and mail back the registration card that is enclosed with the CD. Registered users will be notified of future multimedia music products and will also receive any additional information or tips that we develop after the product has been shipped.

End of Read Me File