



## *Table of Contents*

# *The Super Show & Go CD Navigator*

## *Multimedia Effects Studio*

[Copyright Notice](#)

[License Agreement](#)



### *How to Use This Product*

[How to use the CD Navigator Interface](#)

[Commands & Features of the CD Navigator](#)

[What is File Sharing?](#)

[What is Shareware?](#)

[Frequently Asked Questions & Troubleshooting](#)

[How to Contact Technical Support](#)



### *More Information*

[About Laser Magic](#)

[About Our Products](#)

[About Limelight Publishing](#)

[About the Super Show & Go CD Navigator](#)



USE OF THIS PROGRAM IMPLIES THAT YOU ACCEPT THE TERMS OF LICENSE AND THAT YOU HAVE READ, UNDERSTOOD AND ACCEPTED THE TERMS OF THIS LICENSE AGREEMENT AND LIMITED WARRANTY.

#### DEFINITION OF TERMS

"**PUBLISHER**" shall mean LaserSoft, Inc. and Limelight Publishing, LLC

"**Representatives**" shall mean distributors, retailers, representatives, employees, or any individual or organization operating on the behalf of, or with the consent of, PUBLISHER.

"**PUBLISHER and its Affiliates**" shall mean PUBLISHER and/or its Representatives.

"**Product**" shall mean *Super Show & Go*, the *CD Navigator*, their documentation and included files, and other related components.

## License Agreement

UPON THE TERMS AND CONDITIONS SET FORTH HEREIN PURCHASER IS GRANTED A NON-EXCLUSIVE ROYALTY FREE LICENSE TO USE THE PURCHASED Product FOR PERSONAL OR BUSINESS USE ON A SINGLE MACHINE. PURCHASER MAY NOT USE PROGRAM FOR PROFIT WITHOUT THE PRIOR WRITTEN CONSENT OF PUBLISHER.

PUBLISHER GRANTS THIS LICENSE TO USE THIS SOFTWARE AND PRINTED DOCUMENTATION TO THE ORIGINAL PURCHASER. THIS PRODUCT IS LICENSED FOR USE BY ONLY ONE PERSON AT A TIME. PUBLISHER EXPRESSLY PROHIBITS INSTALLING THIS PRODUCT ON MORE THAN ONE COMPUTER IF THERE IS ANY CHANCE THAT BOTH COPIES WILL BE USED SIMULTANEOUSLY. THIS RESTRICTION ALSO EXTENDS TO INSTALLATION ON A NETWORK SERVER, IF MORE THAN ONE WORKSTATION WILL BE ACCESSING THE PRODUCT.

IN NO EVENT MAY ANY FILE, PART OR COMPONENT OF THIS Product BE DISTRIBUTED WITHOUT WRITTEN AUTHORIZATION FROM PUBLISHER, INCLUDING, BUT NOT LIMITED TO: THE EXECUTABLE FILE(S), DATA OR DATABASES, GRAPHIC COMPONENTS, AND DOCUMENTATION.

## Disclaimer

THIS PROGRAM IS NOT PROVIDED WITH ANY WARRANTY OR GUARANTEE WHATSOEVER AS TO THE ACCURACY OF RESULTS, COMPATIBILITY WITH OTHER PROGRAMS, OR THE SUITABILITY OF THE PROGRAM FOR ANY PARTICULAR USE. USE THIS PROGRAM AT YOUR OWN RISK!

PUBLISHER and its Affiliates CANNOT BE HELD RESPONSIBLE FOR ANY DAMAGES CAUSED BY THE USE OR MISUSE OF THIS PROGRAM. PUBLISHER and its Affiliates DISCLAIM ANY LIABILITY FOR DAMAGE TO COMPUTER, FILES, OR ANY OTHER EQUIPMENT, WHETHER DIRECT OR CONSEQUENTIAL. IF THE PROGRAM IS DEFECTIVE THE USER ASSUMES FULL RESPONSIBILITY FOR DAMAGE CAUSED INCLUDING PAYING FOR REPAIRS, SERVICING AND ANY INCIDENTAL OR CONSEQUENTIAL DAMAGES. PUBLISHER and its Affiliates WILL NOT BE LIABLE FOR ANY DAMAGES INCLUDING LOSS OF BUSINESS PROFITS, BUSINESS INTERRUPTION, LOSS OF BUSINESS INFORMATION, ETC. CAUSED BY THE USE OR MISUSE OF THIS PRODUCT. THIS CLAUSE IS VALID EVEN IF PUBLISHER and its Affiliates WAS ADVISED OF THE POSSIBILITY OF SUCH DAMAGES.

IF THE PURCHASER IS NOT SATISFIED WITH THIS AGREEMENT HE OR SHE MUST RETURN THE COMPLETE PACKAGE WITHIN THIRTY (30) DAYS, INCLUDING ALL PRINTED MATERIALS TO

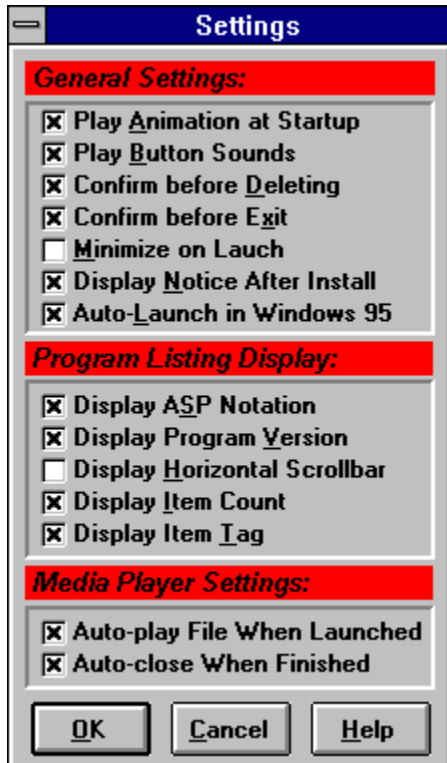
PUBLISHER IN RESALEABLE FORM TO RECEIVE A FULL REFUND. IN NO CASE SHALL THIS REFUND BE MORE THAN THE ACTUAL PRICE PAID FOR THE PACKAGE AS APPEARING ON THE PURCHASER'S INVOICE.

THE PROGRAM IS SUPPLIED "AS IS". NO WARRANTIES OF ANY KIND EXPRESS OR IMPLIED ARE MADE AS TO IT OR ANY MEDIUM IT MAY BE ON. WE WILL PROVIDE NO REMEDY FROM FOR INDIRECT, CONSEQUENTIAL, PUNITIVE OR INCIDENTAL DAMAGES ARISING FROM IT, INCLUDING SUCH FROM NEGLIGENCE, STRICT LIABILITY, OR BREACH OF WARRANTY OR CONTRACT, EVEN AFTER NOTICE OF THE POSSIBILITY OF SUCH DAMAGES.

This Agreement is governed by the laws of the State of Indiana.

## Configure Settings

The Settings dialog allows you to customize the *CD Navigator* to work the best for you. From this dialog, you can control features such as animation and sound effects, prompts, notices, auto-minimizing, and Program Listing format.



(Click on areas of the picture above for more information.)

### Setting Explanations

Setting	Explanation
Play Animation at Startup	Toggle the startup animation on/off.
Play Button Sounds	Toggle sound effects on or off.
Confirm before Deleting	Asks you if you are sure, when you click the <u>Delete</u> button.
Confirm before Exit	Asks you if you are sure, when you click the <u>Exit</u> button.
Minimize on Launch	Minimized the <i>CD Navigator</i> when a program is launched. (Same as the Program Manager feature by the same name.)
Display notice after install	Displays notice when a program is installed.
Auto-Launch in Windows 95	Automatically runs the <i>CD Navigator</i> when the disc is inserted into the drive. Only available on systems running Windows™ 95.
Display ASP Notation	Displays the notation <ASP> next to programs which

are written by ASP Authors.

**Display Program Version**

Displays the version number next to each program in the [Program Listing](#).

**Display Horizontal Scrollbar**

Places a horizontal scrollbar at the bottom of the Program Listing, so that you can scroll left and right to view long entries.

**Display Item Count**

Displays the number of items in the current category, at the top.

**Display Item Tag**

Displays the type of file for multimedia files; for example, "SOUND" for sound files, "IMAGE" for graphic files, and so on.

**Auto-play File When Launched**

When a multimedia file is launched, and uses the Windows™ Media Player as a viewer, this option causes the file to begin playing immediately.

**Auto-close When Finished**

When a multimedia file is launched, and uses the Windows™ Media Player as a viewer, this option causes Media Player to close automatically when the file.

## ***Media Player***

The Windows™ *Media Player* (MPLAYER.EXE) is often used to play a wide variety of multimedia files--from WAV and MIDI files to AVI Video and FLI Animations. For ease of use, our *Super Show & Go Multimedia Effects Studio* product offers certain basic control over how *Media Player* operates. The two basic *Media Player* features which the CD Navigator can control are:

1. *The ability to start playing the sound or video as soon as Media Player starts.*
2. *The ability to shut down Media Player as soon as the multimedia file is finished playing.*

Both of these features can be set through the Configure Settings dialog. For more information about how to use *Media Player*, please consult your Windows™ documentation.

## Searching for Programs or Items



If you are looking for a specific type of program or item, the *CD Navigator* includes a powerful keyword searching feature. Simply type the keyword you are looking for in the box labeled *Text to search for* and then click the Search button. If matches are found, the Program Listing will display them.

*Multimedia Effects Studio Super Show & Go* allows you to further restrict the items you find by specifying the file categories to search (Programs, Images, Sounds, and Animations), as well as the specific types of files you are looking for.

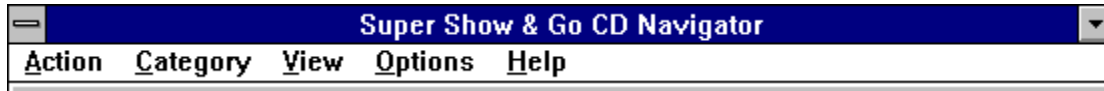
The *CD Navigator* search engine will search through all program titles, descriptions, and authors for matches, and will display any item which contains the text you specified.

***For example:*** If you specify the word "**man**" as the text to search for, the *CD Navigator* search routine will find programs that contain the following example text:

***The Description:*** "...this address book allows you to track **many** different contacts..."  
***The Title:*** "**M**anager Pro v1.2"  
***The Author:*** "Robert All**sman**, Jr."

## ***Menu Bar***

The menu bar across the top of the interface provides access to all features of the *CD Navigator*. Below is a list of the menu items, and a description of the action that each performs.



### ***Action Menu***

The Action menu contains the same features as the Action Buttons area of the interface, and is provided for quick keyboard access to these commands. In addition, the following choice(s) appear:

<u>Launch</u>	<u>Read</u>	<u>Install</u>
<u>Order Form</u>	<u>Search</u>	<u>Add Item</u>
<u>Move Item</u>	<u>Edit Item</u>	<u>Delete Item</u>
<u>Exit</u>		

### ***Category Menu***

The Category menu lists the Category Buttons, just as they are displayed along the left side of the interface, and is provided for quick keyboard access.

### ***View Menu***

The View menu provides a keyboard shortcut to changing the Program Information Panel. Pressing the <F3> key, for example, is the same as clicking on the "Detail" tab. In addition, the following choice(s) appear:

- Description
- Detail
- Author
- Show Item Path

### ***Options Menu***

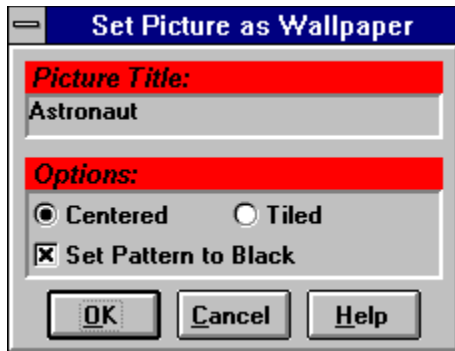
- Configure
- Install File Sharing
- Set Picture as Wallpaper
- Restore Content

### ***Help Menu***

The Help menu provides access to our comprehensive on-line documentation. You can jump directly to the Table of Contents by selecting the "Contents" option, search for a particular keyword, or access any of several "Special Help Topics".



## *Set Picture as Wallpaper*



Another special feature of *Multimedia Effects Studio Super Show & Go* is the ability to set a bitmap as your Windows™ background wallpaper. Your "wallpaper" is the image that you see on your Windows™ desktop, behind all of your application windows.

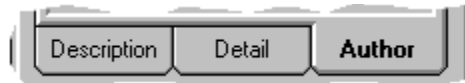
To use this feature, first select a bitmap that you like from the "Images" category. Then choose "Set Picture as Wallpaper" from the "Options" menu (or just press CTRL-W), and the dialog above will appear.

Windows™ allows you to either "tile" or "center" your wallpaper image, and you can choose either option from this *CD Navigator* dialog. Also, because many images look better on a black background, the *CD Navigator* allows you to specify "Set Pattern to Black."

***Important Note:*** *This feature works best on systems with 256-color support or better. On 16-color systems, the images will look very "pixillated" due to the low number of colors to display with. In addition, the images must be copied to your Windows™ directory in order to be used as wallpaper. Because full-color images files can be large--often 500 Kilobytes or more--it is easy to use up your free hard drive space. If you use this feature often, take care to delete old and unused graphics from your Windows™ directory.*

## ***Program Information Area***

The Program Information area of the *CD Navigator* interface allows you to access a wide variety of information very easily. Information such as the program or item's size, a concise program description, and even the author's phone number and mailing address are just a click away!



**(Click on areas of the picture above for more information.)**



**(Click on areas of the picture above for more information.)**

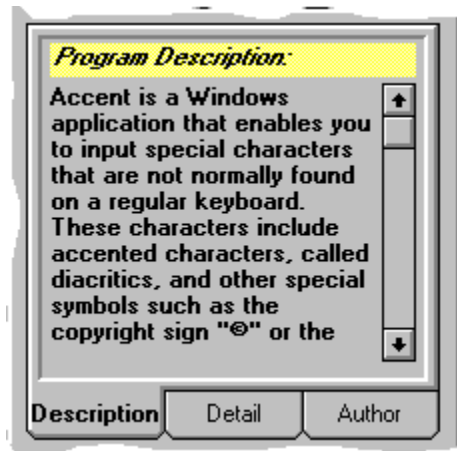
[Program Description Tab](#)

[Item Preview Tab](#)

[Program Detail Tab](#)

[Program Author Tab](#)

## *Program Description*



(Click on areas of the picture above for more information.)

The description window gives a brief, concise description about the selected program. Often, the description will exceed the length of the display area, so use the scroll bar to display more text.

You can view the detail pane by clicking on the "Description" tab. Alternatively, you can select *View/Description* from the menu, or press the F2 function key.

## *Item Preview*



(Click on areas of the picture above for more information.)

The preview window allows you to quickly examine a graphic or multimedia file without actually launching it. For example, while browsing through the "Images" category, you will see smaller-sized versions of the graphic files in the preview window.



(Click on areas of the picture above for more information.)

Multimedia clips, such as sound and video files, display a VCR-style control in the preview window. Simply click the VCR "play" button to start playing the multimedia clip, and use the Pause and Stop buttons as desired.

## *Program Detail*

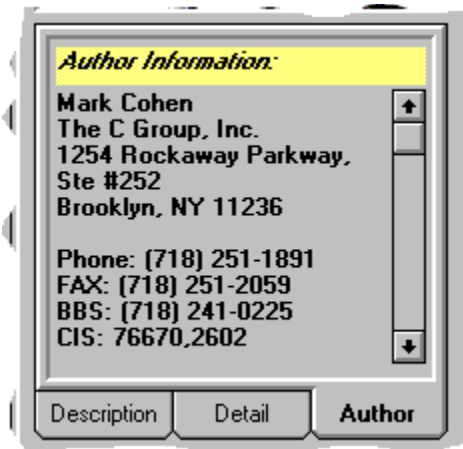


(Click on areas of the picture above for more information.)

The detail window displays some additional information about the program, such as the type, registration cost, size, version number, and CompuServe Shareware Registration Number of the program.

You can view the detail pane by clicking on the "Detail" tab. Alternatively, you can select *View/Detail* from the menu, or press the F3 function key.

## *Program Author*



(Click on areas of the picture above for more information.)

The author pane displays various information about the author of the selected program. This pane is divided into two sections... at the top of the author information pane, you will see the author's name, company, and mailing address. At the bottom, you will see a list of other ways to contact the author, such as phone number, FAX number, and E-mail addresses.

<b>Order Phone</b>	Use this phone number to register the software.
<b>Phone</b>	The author's phone number.
<b>FAX</b>	The author's fax number.
<b>BBS</b>	The author's BBS number.
<b>CIS</b>	The author's CompuServe ID.
<b>Internet</b>	The author's Internet address.
<b>Genie</b>	The author's Genie ID.
<b>BIX</b>	The author's BIX ID.

You can view the detail pane by clicking on the "Author" tab. Alternatively, you can select *View/Author* from the menu, or press the F4 function key.

## ***E-mail Addresses***

Electronic Mail, or "E-mail" addresses are often the fastest and most economical way to reach an author. Since many authors have full or part-time careers, in addition to the Shareware businesses they run, they are often unreachable during the day. The Super Show & Go CD Navigator stores and displays addresses for these on-line services: CompuServe, Internet, Genie, and BIX.

If an author has an email addresses for a service that you don't subscribe to, there are often ways to send mail through a "gateway", or a bridge between the services.

### ***Example #1:***

If the author has an Internet address, such as... "**bob@bobware.com**", but you only have a CompuServe account, simply address your letter to:

**INTERNET:bob@bobware.com**

### ***Example #2:***

Alternatively, if the author has a CompuServe address, such as... "**12345,6789**", but you only have an Internet account, address your letter to:

**12345.6789@compuserve.com**

(NOTE: Please note that the comma in the CompuServe address has changed to a period in the Internet address. Also note that there are no spaces in either address format.)

*Consult your on-line service's manual for further details on how to send mail to outside services.*



## **Troubleshooting / Frequently Asked Questions**

This section contains helpful notes and Frequently Asked Questions (FAQ) of our technical support department. Because of the power and complexity of the Windows™ environment, many different messages can appear, which all have the same cause. For this reason, multiple questions and multiple answers may be grouped together below.

---

**Q:** *My computer reports "Unable to Read Drive D:".*

**Q:** *When I access the CD-ROM, I get a "Bad Media" message.*

A: The most common reason for these errors is dust or fingerprints on the CD. Use a soft, clean cloth, such as a cotton T-shirt and some water. Wipe the disc from the center to the edge. If necessary, you may use a mild detergent, but NEVER use solvents of any kind as they may cause permanent damage to the CD. If problems continue to occur, it is possible that your CD-ROM drive may need cleaned or repaired. A scratch or other permanent mark on the underside of the CD may also cause this problem.

A: The second most common reason for these errors is that your drive is dirty or miscalibrated. If problems persist, you may want to have your drive inspected by a professional.

---

**Q:** *The 'Add Item' and 'Delete Item' buttons are always disabled.*

A: Windows™ must have file sharing enabled in order for these features to become available. You must have a file sharing driver loaded, such as VSHARE.386 or SHARE.EXE to take advantage of these features. For more information, please see the help file topic: ['What is File Sharing?'](#).

---

**Q:** *I have installed VSHARE.386, but the 'Add Item' and 'Delete Item' buttons are still disabled.*

A: After installing VSHARE.386, Windows™ must be restarted in order to enable file sharing. If you have already restarted Windows™, and the buttons still appear grayed, then you are probably running Windows 3.1 in STANDARD mode. VSHARE.386 (and all other virtual device drivers) will only load when you are running Windows™ 3.1 in ENHANCED mode. Please see your Windows™ documentation for more information about running Windows™ in Enhanced Mode. If you cannot run Windows™ in Enhanced mode, you may still be able to enable file sharing by using SHARE.EXE. Please consult your DOS documentation for details on installing SHARE.EXE.

---

**Q:** *When I launch a multimedia file (such as a sound or video), I get the error "This device cannot play."*

A: Your system has incorrect information in your WIN.INI file about which file types can be played. Media Player attempts to launch the file, but then discovers that it does not have an appropriate driver. If you are an expert Windows™ user, you may want to examine



the [MCI Extensions] section of your WIN.INI file.

---

**Q:** *When I launch a multimedia file (such as a sound or video), I get the error "Media Player cannot find a device to play AVI files". (or WAV files, FLI files, etc.)*

A: Your system has no associated viewer for the selected multimedia file, and Media Player does not have an appropriate driver to play the file with. In order to play the selected file, you need to have a viewer application or device driver that support the appropriate file format.

---

**Q:** *When I launch a data file (such as an image, a sound or video), I get the error "There is not an associated viewer for the BMP file format." (or WAV files, FLI files, etc.)*

A: Your system has no associated viewer for the selected data file. In order to view the selected file, you need to have a viewer application that supports the appropriate file format. See [File Associations](#) for more information on how to specify a viewer.

---

**Q:** *When launching a .PCX file under Windows™ 95, Paint starts can I get an error message which states, "Paint cannot read this file. This is not a valid bitmap file."*

A: The Windows™ 95 version of PaintBrush does not support the .PCX file format any longer. In order to view .PCX files, you will need to use a different viewer.

---

**Q:** *I can't preview an item which I added to the database.*

A: Any item you add to the database has an optional description which you can enter... in order to display this description, the "Description" tab must remain visible, even for Multimedia items such as WAV files. However, you can still freely launch these files, just like any of the other multimedia files included on the CD-ROM.

---

**Q:** *I get a 'Path / File Access' error when running a program from the CD-ROM.*

A: If this error occurs while you are running a Shareware program, then the program is attempting to save information into its own directory, on the CD-ROM. Because CD-ROM's are read-only, the program cannot save information to the disc. Simply install the program to your hard drive (using the [Install](#) button), and launch it from the Program Manager (*not* the *CD Navigator*). The program will then be able to function normally.

---

**Q:** *After installing a Shareware program, I tried to run it, and got a 'File not found' error.*

A: Consult the program's documentation for proper placement of necessary files. Because the *CD Navigator* cannot know where a program wants its files, it copies all necessary files into a single directory. This usually works very well, but may fail on systems with unusual configurations. Programs which require more complex installation usually come with their own setup program, and *CD Navigator* has no control over the installation process.

---

**Q:** *A message box says 'VBRUN300.DLL' is in use. Cannot Continue.*

**A:** Shut down all applications then retry running the program from the file manager.

## ***Drivers and Viewers on this CD***

Because of the wide variety of multimedia content which is available for use on your PC, it is very possible that you will not have an appropriate driver installed to handle a particular file format. For example, even though AVI video files are the native video format for Windows™, you still have to install a special driver to play them.

To help maximize the power of your computer, we have included the following drivers and viewers on the CD:

### ***Video for Windows™ 1.1***

Video for Windows™ is a driver which allows you to play AVI files on your Windows™ system. The driver needs to be installed (by running the included Setup program) before it can be used.

*The English driver is located on the CD-ROM in the directory:*

**\\DRIVERS\\VFW**

*The German driver is located on the CD-ROM in the directory:*

**\\DRIVERS\\VFW\\GER\\DISK1**

*The French driver is located on the CD-ROM in the directory:*

**\\DRIVERS\\VFW\\FRN\\DISK1**

### ***Autodesk Animation Player for Windows™, v1.10***

The Autodesk Animation Player is a viewer which allows you to play FLI, FLC, and AAS file formats. Because the player is an application, we have left it uncompressed on the CD-ROM so that you can run it without needing to install it. In fact, if the CD Navigator cannot find a viewer for FLI, FLC, or AAS files on your system already, it will automatically use the Animation Player from the CD.

*The viewer is located on the CD-ROM in the directory:*

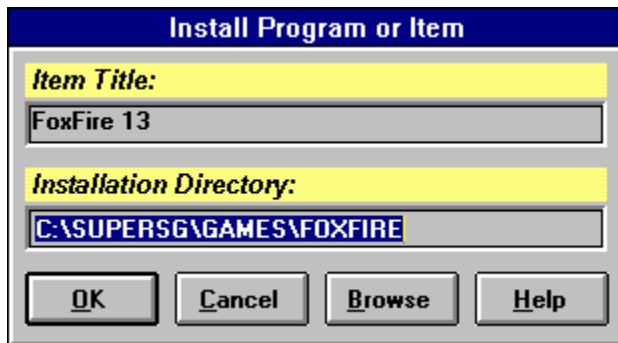
**\\DRIVERS\\AAWIN**

## *Installing a Program*

If you particularly like a program and would like to install it to your hard drive, select the program and click on *Install*. Installing a program allows you to run it without having the *Super Show & Go* CD-ROM in your drive, and without using the *CD Navigator* interface. An icon will be created for you in the Program Manager, to make launching the program easy.

Programs which do not have their own installation procedure will be installed by the *CD Navigator's* built-in installer. When this happens, you will see a dialog appear that looks like the one below. Programs which do have their own custom installation program will all appear differently, and ask different questions... simply follow the instructions that program gives you to install the program.

### *CD Navigator's Built-In Installer*



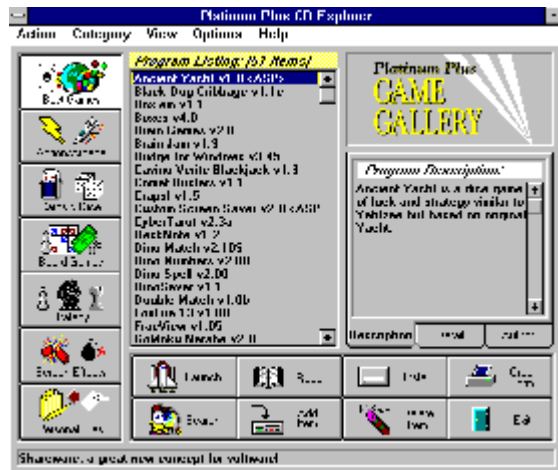
The "Install Program or Item" dialog allows you to specify the location that you want to install the selected program. The *CD Navigator* will automatically pick a default directory for you, which is often the best choice. Once you have selected a destination path (or chosen to use the default installation directory), click the "OK" button to complete the installation.

If you wish to select a different path than the default one provided, you may type it directly into the Installation Directory box, or browse for a destination by clicking the Browse button.



## How To Use The CD Navigator

This section provides important information on how to use the *CD Navigator* interface and its many powerful features. Many of the pictures you will see in this section contain "hot-spots" which you can click on for more information.



(Click on areas of the picture above for more information.)

*For information on an area of the CD Navigator interface, please click on the desired area of the interface picture, or select from these areas...*

[Menu Bar](#)

[Category Buttons](#)

[Program Listing](#)

[Program Information Panel](#)

[Action Buttons](#)

[Help Bar](#)

For ease of use, the *CD Navigator* interface is divided into four major areas. These areas are: the Category Buttons (along the left side), the Program Listing (in the center), the Program Information Panel (center of the right side), and the Action Buttons (bottom right). To learn about each of these areas, please click on that area of the above picture, or click on its name, below...

[Category Buttons](#)

[Program Listing](#)

[Program Information Panel](#)

[Action Buttons](#)

In addition to these four major areas, there are two additional areas which you will find very useful. The menu bar across the top of the *CD Navigator* allows access to all features of the product, including some "special" features which cannot be accessed through the command buttons. Along the bottom of the interface is an area called the "Help Bar", which provides context-sensitive help on the fly. For more information, please click on the appropriate topic below:

[Help Bar](#)

[Menu Bar](#)



## *Commands & Features*

This section provides quick access to information about the many commands and features of the *CD Navigator*. For quick access while using the CD Navigator, you can press the <F1> key or click the Help button on any dialog, and the appropriate help page will appear.

### ***Commands***

[Add Item](#)

[Configure](#)

[Delete Item](#)

[Edit Item](#)

[Exit](#)

[Install](#)

[Install File Sharing](#)

[Launch](#)

[Move Item](#)

[Order Form](#)

[Read](#)

[Restore Content](#)

[Search](#)

[Show Item Path](#)

### ***Features***

[Author Information Panel](#)

[Category Buttons](#)

[Program Description Panel](#)

[Program Detail Panel](#)

[Windows™ 95 features](#)



## **Technical Support**

This section contains information on how to obtain technical support, both for the *CD Navigator* interface, and for the individual programs or items contained on the *Super Show & Go* products. If you are having difficulty using the Super Show & Go CD Navigator, please read the [Frequently Asked Questions](#) section first to resolve common problems.

### ***Technical Support for programs on the Super Show & Go CD-ROM***

Our expert technical staff works diligently at selecting only the best and most useful program for our *Super Show & Go* CD-ROMs. However, depending on your system configuration, and your expertise using a computer, you may have problems or questions about programs which are on the *Super Show & Go* CD-ROMs.

If you have a question about one of these programs, you should contact the author of the program for assistance. He or she can provide the best help for your problems, and the best answers to your questions. *It is important to realize, however, that due to the costs and time involved, many authors require you to register the program first, before technical assistance can be provided.* For information on an author's policies, you should examine the program's documentation, as well as the screens that appear when you run the program itself.

To make our products as easy to use as possible, we have provided a variety of information on how to contact the author. This information can be found on the *CD Navigator* main screen, by clicking on the [Author Information](#) tab.

Due to the huge number and tremendous variety of programs we distribute, we cannot provide technical support for the many programs on our CD-ROMs. Because we did not write these programs, we do not have access to information about their design--or how to provide technical assistance for their use.

### ***Technical Support for the CD Navigator interface***

If you have a problem actually starting or using the *CD Navigator*, we are happy to provide free technical assistance to help you get started!

Before contacting technical support, please read this entire help document, as many common questions are answered here. If the information in this document does not answer your questions, please contact our Technical Support department at the numbers below.

If *Super Show & Go* displays an error message, please write down that message completely, and have it ready when you call. Technical support problems are often much easier to solve if you are at your computer when you contact us.

Also, please note that at this time, we can only provide technical assistance in English. If you do not speak English fluently, but can read and write English, please contact us by FAX at the number below.

### ***How to Contact Technical Support***



Limelight Publishing, LLC  
2718 Rand Road  
Indianapolis, IN 46241 USA

**Phone:** (317) 487-8807

**FAX:** (317) 487-8810

**Hours:** 9 AM to 6 PM, Monday through Friday,  
EST.

After hours and on weekends and holidays, you  
can reach us by FAX.





## *What is Shareware?*

Shareware is an exciting marketing method which allows you to try top-quality software before you pay the author. With Shareware, you cannot be disappointed spending money for a program that's not right for you. The small fee you pay to us covers only the duplication and distribution costs, and permits you to evaluate the program.

If you continue to use the program, you must send the author an additional payment which may entitle you to technical support, printed manual, bonus programs, and more. Your payment supports authors, enabling them to continue writing newer and better Shareware programs.



## *What is File Sharing?*

File Sharing is the ability for two or more programs to "share" a file at the same time. Many database engines require file sharing support, due to the tremendous amount of file operations that are done.

### ***Does my system already support file sharing?***

Although newer versions of Windows™, such as Windows™ for Workgroups, Windows™ NT, and Windows™ 95 have built-in file sharing capabilities, Windows™ 3.1 does not. If you are using Windows™ 3.1, you will need to install file sharing capabilities.

Microsoft provides two different drivers, each which support file sharing. The best method is to use a special Windows™ driver called VSHARE.386, which the CD Navigator can install for you--see below for details on how to install VSHARE.386. The second driver that you can use is SHARE.EXE, a DOS-based program which can be run from the DOS command line, or added to your AUTOEXEC.BAT file. SHARE.EXE is an older solution, which in most cases should be considered obsolete. VSHARE.386 should be used whenever possible. If, however, VSHARE.386 cannot be used on your system, SHARE.EXE should work fine. For information on installing SHARE.EXE, please consult your DOS manual.

***Important Note:*** *If your computer is attached to a network, please consult your network administrator before installing file sharing, or making any changes to your system configuration.*

### ***How to install VSHARE.386***

If your system does not already have file sharing support installed, you will get a message the first time you run the *CD Navigator*. Immediately following the message, you will be asked whether you want the *CD Navigator* to install file sharing for you. If you choose not to install file sharing, you can change your mind at any time by clicking on the *Options* menu and selecting "Install File Sharing".

***Important Note:*** *VSHARE.386, like all virtual device drivers, will only work if you are running Windows™ in "386 Enhanced" mode. To make certain that you are, choose "Help/About" from menu of Program Manager. If you are running Windows™ for Workgroups, Windows™ NT, or Windows™ 95, file sharing is already enabled.*



## About Limelight Publishing

Limelight Publishing is a CD-ROM publishing company with many very successful product lines including the *Super Show & Go CD Navigator*, the *Platinum Shareware Series*, the *Companion CD-ROM Series*, the *Show & Go CD Navigator* series, and other full featured multimedia products.

Limelight is known throughout the industry for its high-quality products and powerful, user-friendly interfaces. We strive to present the information on our discs in a powerful, intuitive, and interactive manner. Our goal is to help you experience the full power and flexibility of your computer!

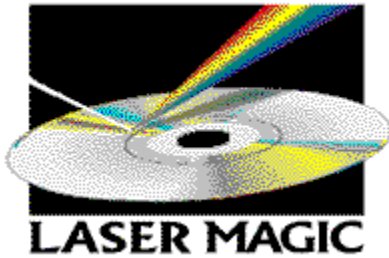
We are always interested in discussing ideas and industry trends... Please let us know your suggestions and ideas! You can reach us at the address below, or send your ideas and thoughts straight to our *Board of Directors* by sending CompuServe mail to us at **72704,1102**. We look forward to hearing from you!



Please send suggestions and comments to:

**Limelight Publishing**  
**2718 Rand Road**  
**Indianapolis, IN 46241 USA**  
**Phone: (317) 487-8800**  
**FAX: (317) 487-8810**

## *About LaserMagic*



LaserSoft is the first value-priced CD-ROM only publisher in the business. Our products range from great Windows shareware collections to state-of-the-art games like Rise of the Triad!

### *Our Customers*

LaserSoft is a unique blend of industry experts with courage to publish easy-to-use software on state-of-the-art media, CD-ROM. We encourage authors to bring innovative, high quality software to the consumer channels such as:

- \* Target
- \* Marshalls
- \* Kay Bee Toys
- \* Toys 'R Us
- \* Computer City
- \* CompUSA
- \* Software Etc.
- \* Babbages
- \* Electronic Boutique
- \* Eckerd Drug
- \* and many others...



## *About the Super Show & Go CD Navigator*

Congratulations! You have purchased the highest quality, most current shareware CD-ROM available today! Every title in the *Super Show & Go* series includes hundreds of Windows™ shareware programs, clipart, fonts, or multimedia files, accessible through our revolutionary *CD Navigator* interface!

## Action Buttons

The lower-right area of the *CD Navigator* interface contains eight command buttons. These buttons are placed for easy-access to the most commonly used features of the CD Navigator interface, such as Launching a program, Reading a program's documentation, and Installing a program.



(Click on areas of the picture above for more information.)

For more information on a particular command button, either click on the image of the button above, or on the text description below.

<b><u>Command</u></b>	<b><u>Action</u></b>
<u>Launch</u>	Launches the selected program or item.
<u>Read</u>	Displays the documentation for the selected program or item.
<u>Install</u>	Installs the selected program or item to your hard disk.
<u>Order Form</u>	Displays the order form for the selected program or item.
<u>Search</u>	Displays the keyword searching window.
<u>Add Item</u>	Adds a new program or item to the list.
<u>Move Item</u>	Moves the selected program or item to a different category.
<u>Edit Item</u>	
<u>Delete Item</u>	Deletes the selected program or item.
<u>Exit</u>	

## ***Launching a Program***

The *Launch* button starts the selected program. Some programs on the CD-ROM may not be launched due to their behavior. These programs must be installed first, because they need to store information into their own directories. The *Launch* button will be grayed out when a program cannot be run from the CD-ROM.

The *CD Navigator* supports launching data files, such as text files (\*.TXT), bitmaps (\*.BMP), and sound files (\*.WAV). You can add these files to the *CD Navigator* database at any time using the *Add Item* button, and then display them with the *Launch* button. To determine which program to use as a viewer, the *CD Navigator* uses your system's file manager associations.

### ***Shortcuts & Special Keys***

1. Double-clicking on a program or item will automatically launch it.
2. **CTRL-L** is also a launch shortcut. Select the item you wish to launch, and press **CTRL-L** on your keyboard. This performs the same action as clicking the Launch button.
3. Certain *Super Show & Go* titles make use of special keys which augment or modify the launch action. For information about this feature, see Special Launch Hot Keys

## ***Special Launch Hot Keys***

Certain *Super Show & Go* titles have special launch key features, to make your work faster and more productive. Below are listed, by title, any special launch hot keys which may be available.

### ***Colossal Clipart***

Our *Clipart Super Show & Go* titles offer each piece of clipart in four different file formats. Because you may have several graphics tools available on your system, you may have set different file associations for each type, to help you work better. The *CD Navigator* allows you to control which file format is displayed by using the following hotkeys...

<b><u>Hot Key(s)</u></b>	<b><u>Action</u></b>
<i>(none)</i>	Display default file format. The default file format is set through the configure dialog box.
<b>CONTROL</b>	Display BMP file format.
<b>SHIFT</b>	Display PCX file format.
<b>SHIFT+CONTROL</b>	Display EPS file format.
<b>ALT+CONTROL</b>	Display TIF file format.

Use these hot keys while launching the program... for example, if you hold down the CONTROL key while you click on the Launch button, the BMP version will be launched. If you hold down the ALT and CONTROL keys while clicking Launch, the TIF version will be launched.



## ***Reading a Program's Documentation***

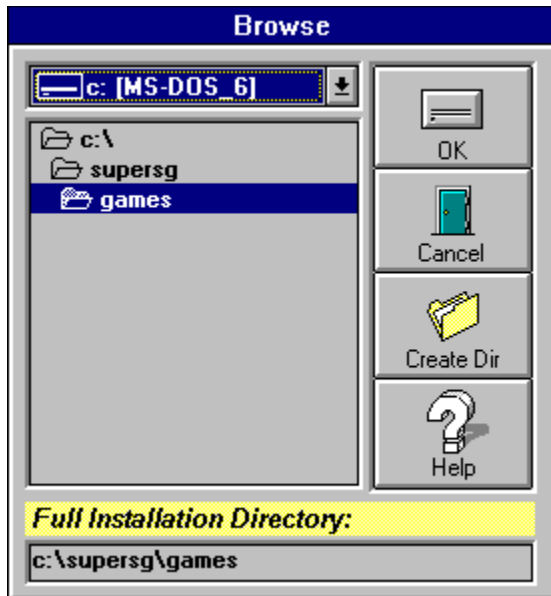
If you would like to know more about a program, select the program from the Program Listing and click on *Read*. The *CD Navigator* will display the program's own documentation, if available. If there is no documentation for the selected item (this is common for items such as pictures and sound files), there are other sources which may be able to provide the information you seek.

The Order Form button, like the Read button, displays a file containing the order form and ordering instructions.

The Description panel of the Program Information area contains a brief, concise description about the program.

Running the program will often provide valuable information, as well. If the program has a help menu, try viewing the About box... it may contain instructions on how to use the program.

## Browse



(Click on areas of the picture above for more information.)

When installing a program or item, you may wish to "browse" for a directory, instead of accepting the default path that the *CD Navigator* chooses. This is useful when, for example, you want to install a game into your own special directory.

Use the *drive* and *directory* controls to locate the directory you want to use. If you want to create a directory beneath the current one, you can use the Create Dir button. Once you have chosen the directory you want to install the program in, click on the "OK" button. *CD Navigator* will return you to the Install Program dialog, with the path you chose displayed in the *Installation Directory* box.

## *Creating a Directory*



Type the name of the directory in the box labeled *New Directory*. Remember, the name can not be longer than eight characters. The full path of the directory is shown in the box labeled *Full Directory Path*. Click on the Create Directory button to make the new directory, or Cancel, if you change your mind.

## ***Order Form***

Many of the programs contained on the *Super Show & Go* series of CD-ROMs are Shareware programs. To make registering your favorite programs as easy as possible, many authors have provided an Order Form which you can print out and mail. If there is no order form for the program, please try the Read button and the program's About box.

## ***Deleting a Program or Item***

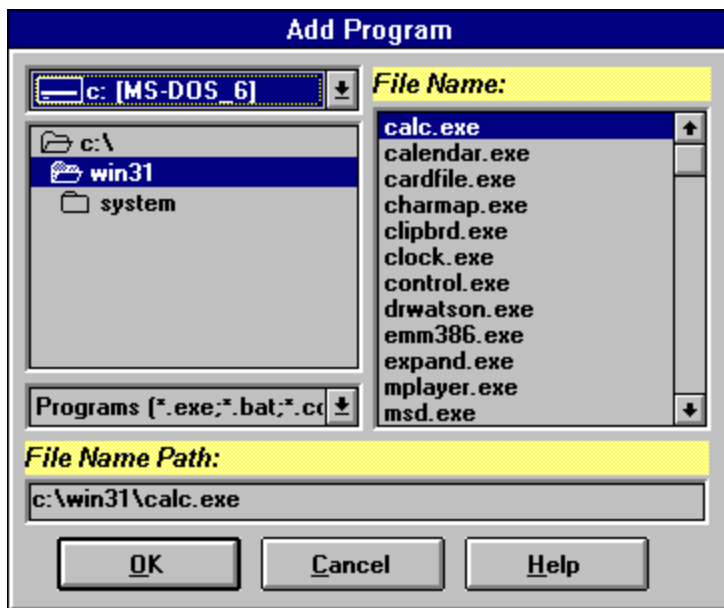
Deleting a program will remove it from the database, and it will no longer be displayed in the Program Listing. This is useful for "hiding" programs which you may never use. If the program is one that you added then it will be permanently removed from the database. However, if you delete one of the original programs it can be 'undeleted' by selecting Restore Content from the Options menu.

## *Adding a Program or Item*

In addition to the hundreds of programs available on each *Super Show & Go* CD-ROM, you can add your own favorite programs to the *CD Navigator* database! This is a great way to categorize and catalog programs which get easily misplaced. Once a program is added, you can launch it just like any other program.

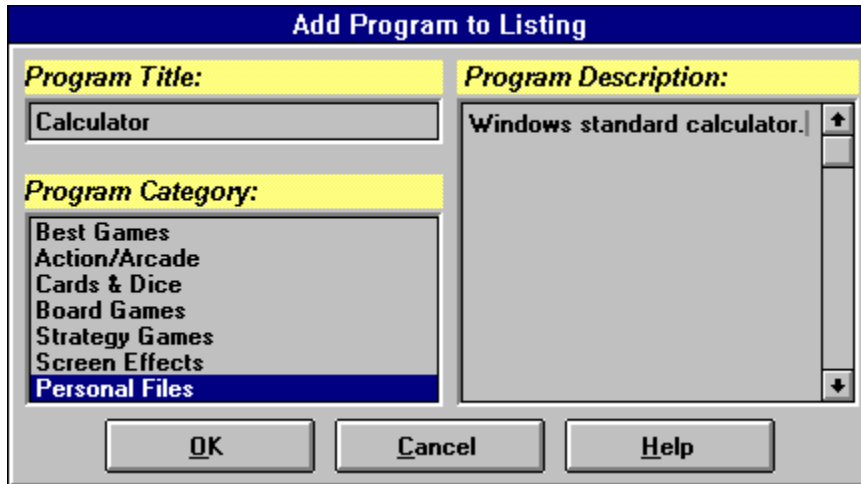
Adding a Program to the database involves two steps: First, you must locate the program or item on your hard drive. Second, you can enter information about the program, including a Title, Description, and Category.

### *Locating the Program or Item*



Use the Add Program dialog to locate the program or item you wish to add. If you are adding a program, make sure to select the program itself, and not one of its data files. Programs typically end in the extension ".EXE". Click OK when you are done or click Cancel if you decide not to add a program.

### *Entering Program Information*



Type the name of the program in the box labeled *Program Title*. Type brief description in the box labeled *Program Description* and select a Category for the new program. Click on OK when you are done. The program you just added is now available under the category you selected!

### ***Adding Data Files***

The CD Navigator has an intelligent launching algorithm which allows you to add data files, such as text files (\*.TXT), bitmaps (\*.BMP), and sound files (\*.WAV) to the database. Simply select the file you want to add, just as you would select a program.

When you launch a data file from the interface, the CD Navigator will make use of your file association to determine which viewer to use. In this way, you can have full control over what program to use as a viewer, for each and every type of data!

## ***Exiting the CD Navigator***

Click on the *Exit* button to leave the *Super Show & Go CD Navigator*. If you have the "Verify on Exit" option turned on, you will be prompted before exiting.



## *Help Bar*

**Shareware, a great new concept for software!**

The context-sensitive help bar always displays a simple hint or suggestion for using the item that the mouse cursor is pointing at. This part of the screen gives a little extra help, such as what action a button will perform, or why a button is grayed-out.

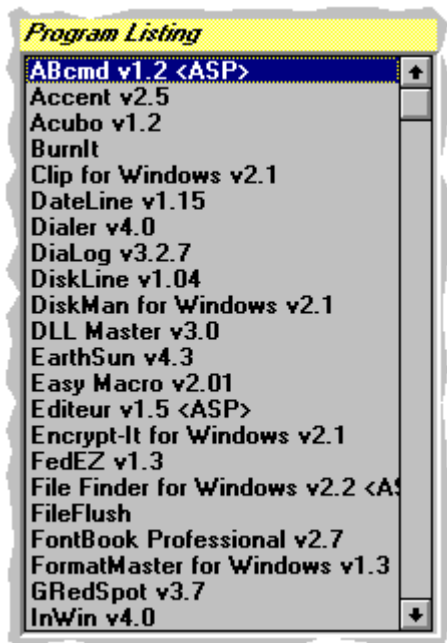
## ***Install File Sharing***

This option will install file sharing capabilities. File sharing is necessary in order for you to use *CD Navigator* features which require changing the database--features such as Add Item, Edit Item, Move Item, and Delete Item.

## ***Show Item Path***

If you are an advanced computer user, you will find this feature invaluable. This feature displays the exact location on the CD-ROM of the selected item. For single-file items, such as a bitmap or sound file, the filename will indicate that particular item. For multiple-file items, such as an application, the filename will indicate the *primary* file. In most cases, this is an EXE file, but can be an SCR file (screensaver), VBX, DLL, or other file.

## Program Listing



The program listing is the central focus of the CD Navigator interface. Most of the actions you will perform in the CD Navigator, such as launching a program, reading a program's documentation, and installing a program, will act on the program that you have selected in the program listing.

For example, if you have "Fredrick's Famous Calculator" selected in the program listing window, and click on the "Launch" button, the CD Navigator will run "Fredrick's Famous Calculator." Likewise, clicking "Install" will install that program. Other commands which act on the selected program are "Delete Item", "Order Form", "Edit Item", and "Move Item".

In addition, the information displayed in the Program Information area is information that pertains to the selected program.

The program listing is the central focus of the CD Navigator interface. Most of the actions you will perform in the CD Navigator, such as launching a program, reading a program's documentation, and installing a program, will act on the program that you have selected in the program listing.

For example, if you have "Fredrick's Famous Calculator" selected in the program listing window, and click on the "Launch" button, the CD Navigator will run "Fredrick's Famous Calculator." Likewise, clicking "Install" will install that program. Other commands which act on the selected program are "Delete Item", "Order Form", "Edit Item", and "Move Item".

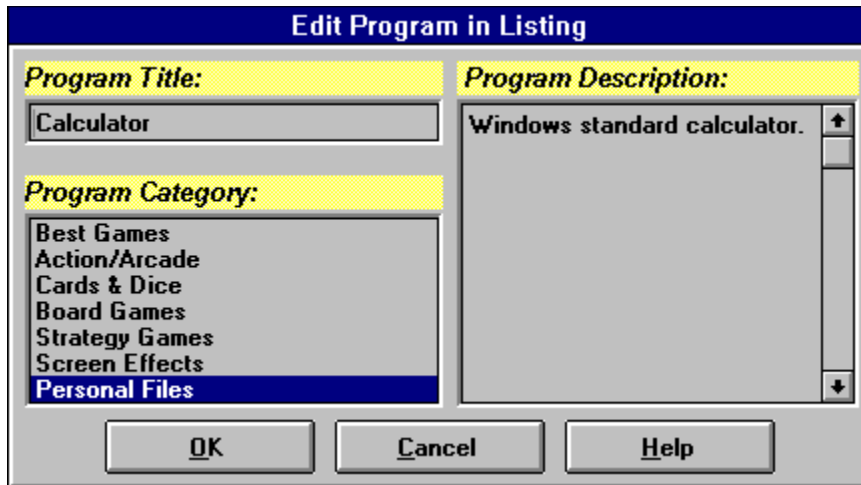
In addition, the information displayed in the Program Information area is information that pertains to the selected program.

Commands such as "Search" and "Exit" are not specific to any program, and therefore don't affect the currently selected program in any way.

The programs and items displayed in the program listing can be changed by selecting a new category button, or by performing a search.

*The notation 'ASP' indicates that the program complies with the standards of the Association of Shareware Professionals.*

## *Edit Item*



The screenshot shows a dialog box titled "Edit Program in Listing". It has a dark blue title bar. The main area is divided into three sections: "Program Title:" with a text box containing "Calculator"; "Program Description:" with a text area containing "Windows standard calculator." and a vertical scrollbar; and "Program Category:" with a list box containing "Best Games", "Action/Arcade", "Cards & Dice", "Board Games", "Strategy Games", "Screen Effects", and "Personal Files" (which is highlighted in blue). At the bottom, there are three buttons: "OK", "Cancel", and "Help".

(Click on areas of the picture above for more information.)

The Edit Item feature allows you to change the Title, Description, or Category of an item that you added. You may only edit programs that you have entered using the [Add Item](#) feature.

## ***Restore Content***

Selecting "Restore Content" from the Options menu will reset the database to its original state. All programs when have been 'deleted' will be available again, and all programs which you have added will be removed.

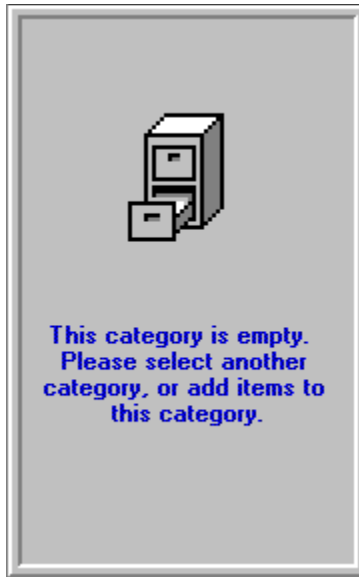
## *Moving a Program or Item*



(Click on areas of the picture above for more information.)

You can move a program to a different category using the Move Item menu option. The program you are moving is shown in the *Program Title* box. Simply select a new category and then click *OK*. You can also double-click the new category, and the program will be moved.

## *Empty Category*



When there are no programs associated with the selected category this window will be displayed. One example being the personal category when the program is first installed. A category might also be empty if all its programs are deleted. To change this, select the restore content feature or add a program to the category.



## Category Buttons



(Click on areas of the picture above for more information.)

The *Super Show & Go CD Navigator* uses category buttons to help you sift through the hundreds of programs on the CD-ROM. Along the left side of the *CD Navigator* interface are between 6 and 20 category buttons, depending on the *Super Show & Go* product which you are using.

To view the programs in a particular category, simply click on that category button. For example, on our *Game Gallery*, you can view all available strategy games by clicking on the "Strategy" button. The programs or items in that category will be displayed in the Program Listing, at the center of the *CD Navigator* interface. If you do not have a mouse on your system, you may select any category by using the Category menu.

The "Personal Files" category, at the bottom of the Category button bar, is a special category that is reserved for your own files. You may add or move your favorite programs to this category, keeping them easily accessible at all times.

## *How To Register*

Many of the programs included on the *Super Show & Go* CD-ROMs are Shareware. Shareware programs are programs which you are allowed to try for a period of time (usually 30 to 60 days), after which you must register them with the author. The authors of these programs work extremely hard to bring you the best programs possible, investing months and often years in the development process. Please make sure to register all Shareware programs which you enjoy and intend to use! This allows authors to develop newer and better programs for your enjoyment, at prices far below retail cost!

Information about program registration can be seen by clicking on the Order Form button. If you cannot find the information you need, or there is no Order Form file available for the selected program, then click on the Read button for the program's documentation. If neither of these methods work, you should look in the program's *About* box, or contact the Author directly for information on how to register the program.

## ***Installation Successful***

*The Super Show & Go CD Navigator installed your selection successfully.*

If you installed a program, you should find an icon available in the Program Manager. Simply double-click on the icon, as you would launch any other program.

System files, such as fonts and screen savers, will now be available in their native environment. For example, if you installed a font, it will now appear in the fonts list of your favorite programs. Windows screen savers can be accessed from the "Desktop" icon of your Control Panel.

Data files, such as bitmaps and sound files, are installed in the directory that you selected. Since bitmaps and sound files must be loaded by another program in order to use them, no icon is created for these files.

## ***Unable to Install Selection Successfully***

*The Super Show & Go CD Navigator was unable to install your selection successfully.*

There are several reasons why an installation can fail. Listed below are some of the most common causes you should check for...

***Not enough disk space.*** You must have enough space on your selected drive in order to install the selected item.

***The selected drive is read-only.*** You must be able to write to the drive you select for installation. For example, you cannot install a file onto your CD-ROM drive, because CD-ROM's are a "read-only" media. If you are installing to a floppy diskette, make certain that the disk has the write-protect tab off.

## *File Associations*

The *CD Navigator* has an intelligent launching feature, which allows you to view data files easily. In addition to programs, which can be run by themselves, you can "*Launch*" bitmaps, sound files, movies, icons, and thousands of other file formats. The *CD Navigator* uses the same viewers that appear whenever you launch a data file from the File Manager.

For example, when you first install Windows™, Paintbrush is the associated viewer for bitmap (\*.BMP) files. Therefore, when you launch a bitmap file from the *CD Navigator* will use Paintbrush to view it. If, however, you find a bitmap viewer that you like better than Paintbrush, you can "associate" it with the bitmap file format so that it becomes the new default viewer.

All file associations are controlled and can be changed through the File Manager's File/Associate menu option. For more information, please consult File Manager's online help, and search for the keyword "associate". "a"

## ***Windows™ 95 Features***

We always strive to bring the newest and best technologies to your desktop, to make your work more productive, and your play more enjoyable! The *CD Navigator* interface is continually evolving, and will improve with each new release of our *Super Show & Go* product line! If you have Windows™ 95 now, or purchase it later, *CD Navigator* can offer the following additional features:

### ***Auto-Running the CD Navigator***

All of our *Super Show & Go* CD-ROMs support a special Windows™ 95 feature called "*AutoRun*". This feature makes it possible to run the *CD Navigator* simply by putting the CD-ROM in your drive! You no longer need to click on an icon to start the interface. If you do not want the *CD Navigator* to launch automatically, you can disable *AutoRun* through the [Configure](#) dialog.

## *Association of Shareware Professionals (ASP)*

The Association of Shareware Professionals (ASP) is a trade association which oversees and regulates the actions of Shareware Authors, Shareware Distributors, and Shareware BBSs--to maintain a high standard of quality and customer service in the Shareware industry.

## ***Cancel Button***

Click the Cancel button to abort the current action, and close the dialog.



## *CompuServe Software Registration Number*

The CompuServe Shareware Registration number, or SWREG #, is a number which you can use to register the Shareware program you have selected. The registration cost of the program will be billed to your CompuServe account, and the author will be notified of your registration. This is a very convenient way of registering programs; however, due to the commission which CompuServe earns, the author may need to charge a slightly higher registration fee when you use this service.

For more information on this service, please check your CompuServe manual, or call CompuServe at 1-800-848-8990 (or 1-614-529-1340).

## *Control Panel*

The Control Panel is a system configuration tool that comes with Windows. It allows you to specify settings for your Windows configuration, such as how fast your mouse cursor moves, and what your desktop background looks like. The Control Panel can be found in the Main group of your Program Manager.



Control Panel

**(Click on this icon to launch your systems Control Panel.)**

## ***Data Files***

A data file is a file which contains certain information. In order to view a data file, a compatible viewer must be used. For example, a bitmap (.BMP) file can be viewed by Windows Paintbrush, and a sound file (.WAV) can be played by the Sound Recorder. Examples of data files are:

**Bitmap files (.BMP)**

**Sound files (.WAV)**

**Movie files (.AVI, .MPG)**

**Animation files (.FLI, .FLC)**

**Icon files (.ICO, .ICL, .DLL, .EXE)**

### *Directory Selection list box*



Use the directory selection list box to choose a directory from the current drive.

### *Drive Selection combo box*



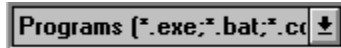
Use the drive selection combo box to select one of your systems drives.

## *File Selection list box*



Use the file selection list box to select a file.

## *File Type Selection combo box*



Use the file type selection combo box to control what kinds of files are displayed in the file selection list box.

## ***Freeware Programs***

A freeware program is a program that is owned and Copyrighted by an author, but which is freely distributable, and has no charge for use.

*see also Public-Domain*

*see also Shareware*



## ***Help Button***

Click the Help button to display information about the current task you are performing, or to find out how to use a particular dialog or screen.

## ***OK Button***

Click the OK button to perform the current action, and close the dialog.

## ***Personal Files Category***

The *Personal Files* category is a category designated for your own added programs. When you add a file to the *CD Navigator* database, you can store it in any category you wish. However, storing it in your *Personal Files* category makes it very easy to find your own added files.

## ***Program Size***

The size of the program represents the amount of space that the program will use if you Install it to your hard drive. Because many Windows™ programs use shared files, called DLLs, this size often represents a *maximum* amount of space that the program will need. However, during installation of the program, you may need as much as twice this amount of space available in order for the program to install successfully.

## ***Program Version***

The version of the program is a number assigned to it to help you determine if it is the most current release. This is done much like a magazine or book, where a higher number such as Volume 2 represents a more recent release.

## ***Public-Domain Programs***

A public-domain program is a program that belongs to the public. When a program is designated as Public-Domain, no individual or company can claim ownership of the program. As such, using a public-domain program costs you nothing, and is freely distributable.

*see also Freeware*

*see also Shareware*

## *Shareware Programs*

A Shareware program is a program that is owned and Copyrighted by an author, but which you have been granted free *limited* rights to use. A Shareware program is just like every other program that you can find in a retail store, except that you are allowed to *try* a Shareware program before you decide whether you want to *buy* it. In this respect, Shareware is a very advanced marketing method.

Your free limited rights to use the program are determined by each Shareware programs author, and you must read the authors documentation to determine what rights you have been granted. Many times, you will be granted a free period of evaluation time, such as 30 days, to determine whether you like the program. If you decide to use the program beyond this evaluation time, you must send the author the requested payment (usually *far* less that retail programs of the same quality) in order to purchase the software.

*see also [What Is Shareware?](#)*

*see also [Public-Domain](#)*

*see also [Freeware](#)*

## *System Files*

A system file is a special file which is recognized and used by Windows to perform certain functions. Examples of system files are:

**Windows Screen Savers (.SCR).**

**Truetype Fonts (.TTF)**



 **Copyright Notice**

*Interface, documentation, and compilation are Copyright © 1995, Limelight Publishing, LLC. All Rights Reserved. All Limelight Products are trademarks or registered trademarks of Limelight Publishing, LLC. Other brand and product names are trademarks or registered trademarks of their respective holders.*

*The software described in this document is furnished under the provisions of a license agreement.*

*The Shareware and Freeware programs contained on this product are owned and Copyrighted by their respective authors. Public Domain programs are the property of the public.*

*Super Show & Go™ is a trademark of LaserSoft, Inc.*

*CD Navigator™ is a trademark of LaserSoft, Inc.*

*MS-DOS® is a registered trademark of Microsoft Corporation.*

*Microsoft® Windows™ is a registered trademark of Microsoft Corporation.*

*Information in this document is subject to change without notice and does not represent a commitment on the part of Limelight Publishing, LLC. No part of this document may be reproduced or transmitted in any form or by any means, electronic or mechanical, for any purpose, without the express written permission of Limelight Publishing, LLC.*



## *About Our Products*

### ***Hot IBM Games!***

*Check out the LaserSoft companion CD's for all of the hottest IBM games!*

#### ***Doom Companion Edition:***

- \* Maps of every level,
- \* Game recordings,
- \* Level editors,
- \* Hints and cheat codes,
- \* Sound editors,
- \* Plus TONS more!

#### ***Demon Gate***

- \* The ultimate Doom challenge!
- \* The ultimate Doom challenge!
- \* Six hundred and sixty-six totally new levels!

#### ***Magic & Mayhem for Heretic:***

- \* One THOUSAND and SIX HUNDRED new levels for Heretic!
- \* New music,
- \* New sound effects,
- \* New wall textures,
- \* And all new levels.

#### ***Rise of the Triad Deluxe Edition:***

- \* The original shareware version plus 6 all new levels from Apogee,
- \* Modem support,
- \* Configurable violence levels (none to EXCESSIVE!),

#### ***Dimensions for Descent:***

- \* Seventy-five all new, fully 3D levels!
- \* Each level the creation of a Descent enthusiast.

