



Adobe
PhotoDeluxe™

User Guide

version
1.0

© 1996 Adobe Systems Incorporated. All Rights Reserved.

Adobe PhotoDeluxe 1.0 User Guide

This manual, as well as the software described in it, is furnished under license and may only be used or copied in accordance with the terms of such license. The information in this manual is furnished for informational use only, is subject to change without notice, and should not be construed as a commitment by Adobe Systems Incorporated. Adobe Systems Incorporated assumes no responsibility or liability for any errors or inaccuracies that may appear in this book.

Except as permitted by such license, no part of this publication may be reproduced, stored in a retrieval system, or transmitted, in any form or by any means, electronic, mechanical, recording, or otherwise, without the prior written permission of Adobe Systems Incorporated.

Please remember that existing artwork or images that you may desire to scan as a template for your new image may be protected under copyright law. The unauthorized incorporation of such artwork or images into your new work could be a violation of the rights of the author. Please be sure to obtain any permission required from such authors.

Adobe, the Adobe logo, Adobe PhotoDeluxe, Photoshop, Adobe Type Manager, ATM, and Acrobat are trademarks of Adobe Systems Incorporated. After Dark, the Flying Toaster logo, and the Berkeley Systems logo are registered trademarks of Berkeley Systems, Inc. Macintosh and Power Macintosh are registered trademarks of Apple Computer, Inc. IBM is a registered trademark of International Business Machines Corporation. Pentium is a trademark of Intel Corporation. Kai's Power Tools and KPT are registered trademarks of MetaTools, Inc. MetaTools is a trademark of MetaTools, Inc. DiAMAR is a trademark of DiAMAR Interactive Corp. Kodak is a registered trademark and PhotoCD is a trademark of Eastman Kodak Company. UNIX is a registered trademark in the United States and other countries, licensed exclusively through X/Open Company, Ltd. Windows is a registered trademark of Microsoft Corporation. All other products or name brands are trademarks of their respective holders.

Contains an implementation of the LZW algorithm licensed under U.S. Patent 4,558,302.

APPLE COMPUTER, INC. ("APPLE") MAKES NO WARRANTIES, EXPRESS OR IMPLIED, INCLUDING WITHOUT LIMITATION THE IMPLIED WARRANTIES OF MERCHANTABILITY AND FITNESS FOR A PARTICULAR PURPOSE, REGARDING THE APPLE SOFTWARE. APPLE DOES NOT WARRANT, GUARANTEE, OR MAKE ANY REPRESENTATIONS REGARDING THE USE OR THE RESULTS OF THE USE OF THE APPLE SOFTWARE IN TERMS OF ITS CORRECTNESS, ACCURACY, RELIABILITY, CURRENTNESS, OR OTHERWISE. THE ENTIRE RISK AS TO THE RESULTS AND PERFORMANCE OF THE APPLE SOFTWARE IS ASSUMED BY YOU. THE EXCLUSION OF IMPLIED WARRANTIES IS NOT PERMITTED BY SOME STATES. THE ABOVE EXCLUSION MAY NOT APPLY TO YOU.

IN NO EVENT WILL APPLE, ITS DIRECTORS, OFFICERS, EMPLOYEES, OR AGENTS BE LIABLE TO YOU FOR ANY CONSEQUENTIAL, INCIDENTAL, OR INDIRECT DAMAGES (INCLUDING DAMAGES FOR LOSS OF BUSINESS PROFITS, BUSINESS INTERRUPTION, LOSS OF BUSINESS INFORMATION, AND THE LIKE) ARISING OUT OF THE USE OR INABILITY TO USE THE APPLE SOFTWARE EVEN IF APPLE HAS BEEN ADVISED OF THE POSSIBILITY OF SUCH DAMAGES. BECAUSE SOME STATES DO NOT ALLOW THE EXCLUSION OR LIMITATION OF LIABILITY FOR CONSEQUENTIAL OR INCIDENTAL DAMAGES, THE ABOVE LIMITATIONS MAY NOT APPLY TO YOU.

Written and designed at Adobe Systems Incorporated, 1585 Charleston Road, Mountain View, CA 94039-7900, USA

Adobe Systems Europe Limited, Adobe House, 5 Mid New Cultins, Edinburgh EH11 4DU, Scotland, United Kingdom

Adobe Systems Co., Ltd., Yebisu Garden Place Tower, 4-20-3 Ebisu, Shibuya-ku, Tokyo 150, Japan

For defense agencies: Restricted Rights Legend. Use, reproduction, or disclosure is subject to restrictions set forth in subparagraph (c)(1)(ii) of the Rights in Technical Data and Computer Software clause at 252.227-7013.

For civilian agencies: Restricted Rights Legend. Use, reproduction, or disclosure is subject to restrictions set forth in subparagraphs (a) through (d) of the commercial Computer Software Restricted Rights clause at 52.227-19 and the limitations set forth in Adobe's standard commercial agreement for this software.

Unpublished rights reserved under the copyright laws of the United States.

Printed in the USA.

BERKELEY SYSTEMS  After Dark

Contents

Welcome to Adobe PhotoDeluxe	1
Let Adobe PhotoDeluxe show you how.....	11
Working on your own.....	13
Getting photos into Adobe PhotoDeluxe	15
Getting photos out of Adobe PhotoDeluxe	21
Making selections while working on your own.....	27
Using layers to create a photo collage.....	37
Tips and troubleshooting.....	47
Index.....	51

Welcome to Adobe PhotoDeluxe™

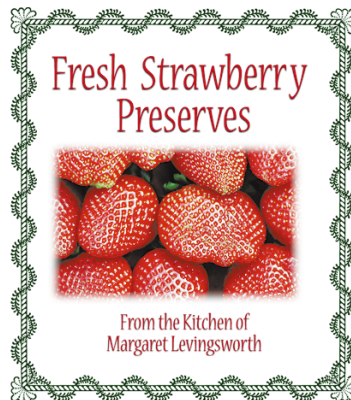


Adobe PhotoDeluxe software will change how you and your family think about and use your photos. Take a few moments to look through the gallery on the next few pages and you'll understand why.

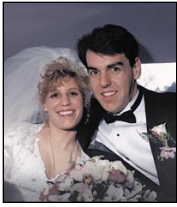
- Create flyers that people will notice.



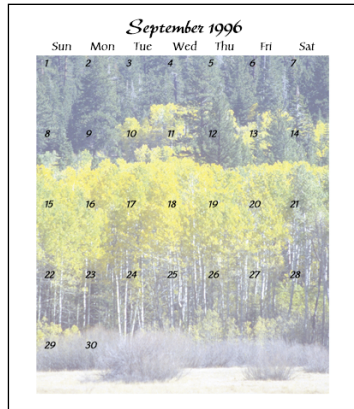
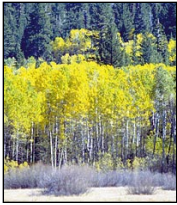
- Transform black-and-white photos into colorful artwork.



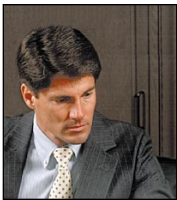
- Add an elegant touch to your hand-crafted gifts.



- Turn your photos into heirlooms by changing them into sepia-toned vignettes.



- Keep track of the date with calendars using your own photos.



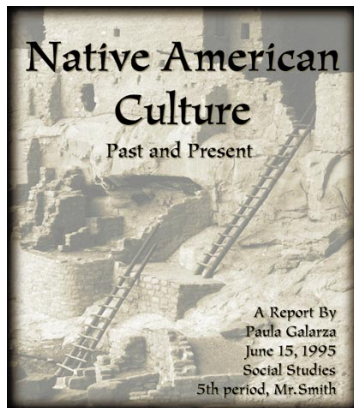
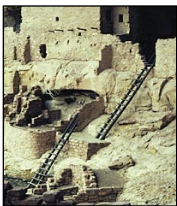
- Tickle your funnybone with whimsical body collages.



- Adjust the color and exposure of a photo with just the click of a button.



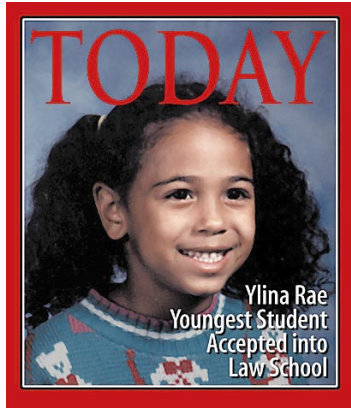
- Invite friends and family to a party with a stylized card, and create cards that warm a mother's heart.



- Impress your teachers and classmates with professional report covers.



- Amaze everyone with irrefutable proof of the strange creatures you saw on your last vacation.



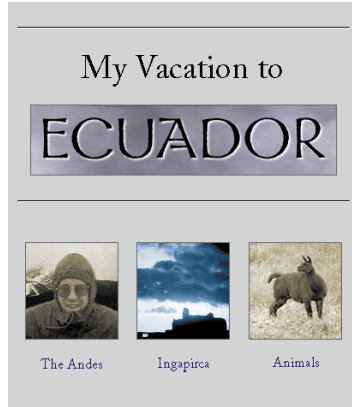
- Make someone feel special by putting them on a magazine cover.



- Create a charming screen saver using Berkeley Systems After Dark®, included on the Adobe PhotoDeluxe CD-ROM.



- If you take a few moments to browse through this guide, you'll learn how to get photos in and out of Adobe PhotoDeluxe so you can turn your vacation photos into impressionist illustrations.



- Or to get your photo ready to send as a virtual snapshot over e-mail or a Web page.



- Or to change any photo into an electronic coloring book. And finally, you'll learn how much fun it is to use Adobe PhotoDeluxe. Say cheese!

THE ADOBE PHOTODELUXE CD-ROM CONTENTS

The Adobe PhotoDeluxe CD-ROM contains the following software:

- *The Adobe PhotoDeluxe software program.* This includes the program files, the installer program, more than 500 templates, clip-art images, sample photos, free fonts, and the Adobe Type Manager® utility.
- *Trial version of DiAMAR™ Interactive's Better Photography.* This trial version includes PhotoLab for experimenting with exposure settings and seeing results on-screen.
- *Special edition of Berkeley Systems After Dark®.* The popular screen saver control panel is integrated into Adobe PhotoDeluxe so you can use your photos with its slide show feature.
- *Special effects from MetaTools™.* From the makers of Kai's Power Tools®, these cool effects include vortices and curled pages.
- *Adobe Acrobat® Reader software.* This software lets you view online documents in the Portable Document Format (PDF) with the original graphics, type, and layout intact.

Windows system requirements

To run Adobe PhotoDeluxe software on a Windows platform, you need the following hardware and software:

- An IBM or compatible personal computer with an i486 or Pentium processor and a minimum of 8 megabytes (MB) of random-access memory (RAM)
- Forty-five (45) MB of free hard disk space
- A double-speed CD-ROM drive
- Microsoft Windows® 3.1 or later, Microsoft Windows NT™ 3.51, or Microsoft Windows® 95 system software
- A color monitor capable of displaying 256 colors
- A video card that supports a resolution of 640 x 480 pixels in 256-color mode

Macintosh system requirements

To run Adobe PhotoDeluxe software on a Macintosh® platform, you need the following hardware and software:

- An Apple® Macintosh computer with a 68040 processor (or any later model) with a minimum of 8 megabytes (MB) of random-access memory (RAM), or a Power Macintosh® with a minimum of 12 MB of RAM
- Forty-five (45) MB of free hard disk space
- A double-speed CD-ROM drive
- Apple system software 7.0 or later
- A color monitor capable of displaying 256 colors
- A video card that supports a resolution of 640 x 480 pixels in 256-color mode

Registration

We are confident that you will find the Adobe PhotoDeluxe program both fun and rewarding. So that we can continue to provide you with the highest-quality software, offer technical support, and keep you informed about new Adobe PhotoDeluxe software developments, please register your copy by using the online registration software provided or by returning the enclosed warranty registration card.

INSTALLING ADOBE PHOTODELUXE

The following procedures describe how to install the Adobe PhotoDeluxe program. Note that you cannot run the Adobe PhotoDeluxe program from the CD-ROM; you must install the program onto your hard disk.

To install Adobe PhotoDeluxe onto a system running Windows:

- 1** Start Windows, if you have not already done so.
- 2** Insert the Adobe PhotoDeluxe CD-ROM into your CD-ROM drive.
- 3** Choose one of the following options:
 - If you are using Windows 95, choose Run from the Start menu.
 - If you are using Windows 3.1 or Windows NT 3.51, choose Run from the File menu in the Program Manager.

4 Type **d:\install\setup** (where **d:** is the CD-ROM drive indicator), and click OK.

5 Click Next.

6 Choose one of the following installation options:

- Choose Typical to install all the software onto your hard disk.
- Choose Compact to install the minimum items required to run the Adobe PhotoDeluxe program.
- Choose Custom to select individual items for installation.

7 To specify where to install the program, click Browse. Choose a drive from the pop-up menu and a directory from the Directories list. Then click OK.

If you do not specify a location, the program will be installed into the PhotoDlx directory.

8 Click Next, and follow the instructions onscreen. When prompted, type your name and the serial number of your Adobe PhotoDeluxe program exactly as it appears on the registration card or on the inside front cover of this user guide.

9 Select or enter a Program Folder, and click Next. Click Next again to begin the installation.

10 When the installation is complete, a message appears asking you to register online. To register the application online, make sure that the registration option is selected. Click Finish to exit the installer.

To install Adobe PhotoDeluxe onto a Macintosh system:

1 Insert the Adobe PhotoDeluxe CD-ROM into your CD-ROM drive.

2 Double-click the Install Adobe PhotoDeluxe icon to install the program files onto your hard disk.

3 Click Continue.

4 From the Install Adobe PhotoDeluxe dialog box, choose how you want to install the program:

- To install all the necessary software onto your hard disk, choose Easy Install from the pop-up menu. This option selects the appropriate version of the program (68K or Power Macintosh) and installs system support files.
- To select individual items for installation, choose Custom Install from the pop-up menu and select the items you want to install.

5 To specify where to install the program, choose a drive from the Install Location pop-up menu. To specify a folder, choose Select Folder from the pop-up menu and select a location.

6 Click Install and follow the on-screen instructions. When installation is complete, a message appears, indicating that installation was successful. When you exit the installer, a message appears prompting you to register the application online.

7 To register the application online, click Continue and then follow the on-screen instructions. When prompted, type the serial number of your Adobe PhotoDeluxe program exactly as it appears on the registration card or on the inside front cover of the user guide.

8 Restart your computer.

STARTING ADOBE PHOTODELUXE



Use one of the following procedures to start Adobe PhotoDeluxe. When using the program, keep the Adobe PhotoDeluxe CD-ROM in your CD-ROM drive as much as possible. Although the CD-ROM is not required to use the program, you will need it to use templates, sample photos, and clip art stored on the disc.

To start the Adobe PhotoDeluxe program from Windows 3.1 or Windows NT 3.51:

- 1** Start Windows, if you have not already done so.
- 2** From the Program Manager, open the Adobe PhotoDeluxe group.
- 3** Double-click the Adobe PhotoDeluxe 1.0 icon.

To start the Adobe PhotoDeluxe program from Windows 95:

- 1** Start Windows, if you have not already done so.
- 2** Click Start, and choose the Adobe group, located under the Programs folder.
- 3** Click the Adobe PhotoDeluxe 1.0 icon.

To start the Adobe PhotoDeluxe program on a Macintosh:

Double-click the Adobe PhotoDeluxe icon, located in the Adobe PhotoDeluxe folder.

ABOUT THIS MANUAL

This manual shows you how to use Adobe PhotoDeluxe on both the Windows and Macintosh platforms. Except for the way dialog boxes and windows look on your screen, the two versions of Adobe PhotoDeluxe are almost identical. The illustrations in this manual alternate between showing the Macintosh version and the Windows version of the program. Any differences in using these two versions of Adobe PhotoDeluxe are described in the text.

Let Adobe PhotoDeluxe show you how



To get started using Adobe PhotoDeluxe, begin in the Guided Activities area. Guided Activities are built-in projects with step-by-step instructions for turning your photos into dazzling artwork.

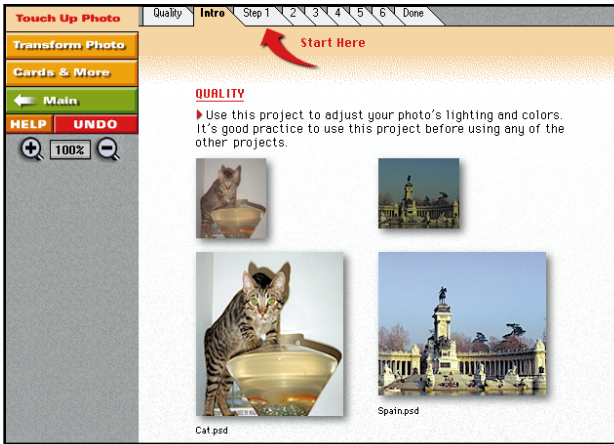
1 Click the Guided Activities button. (If you don't see the Guided Activities button, click the Main button.)



2 Click the category you want. In most cases, you'll want to use a project in the Touch Up Photo category before using a project from either the Transform Photo or Cards & More categories.



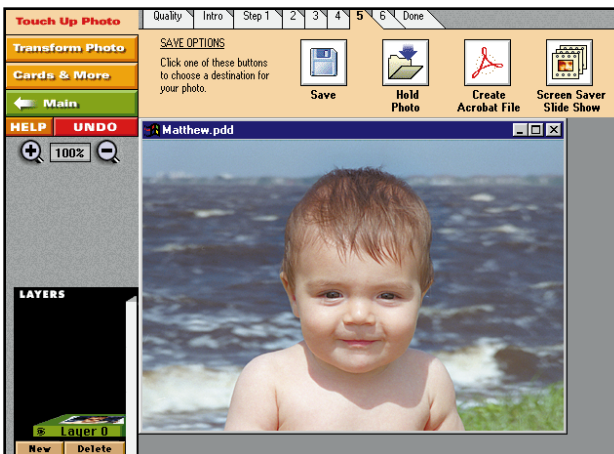
3 Choose a project. If more than one tab is displayed, click the tabs to view different projects.



4 Review the examples. If you want to work with a different technique or project, click the Done tab and choose another technique or project.



5 When you are ready to start, click the Step 1 tab and follow the instructions.



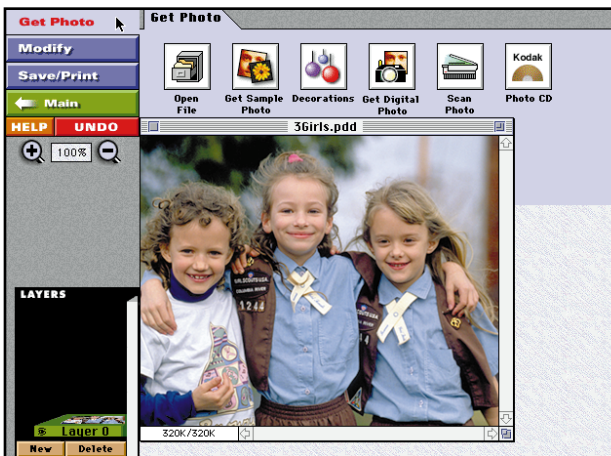
6 Follow the tabs sequentially. Click the Done tab when you complete the project or to stop at any time.

Working on your own



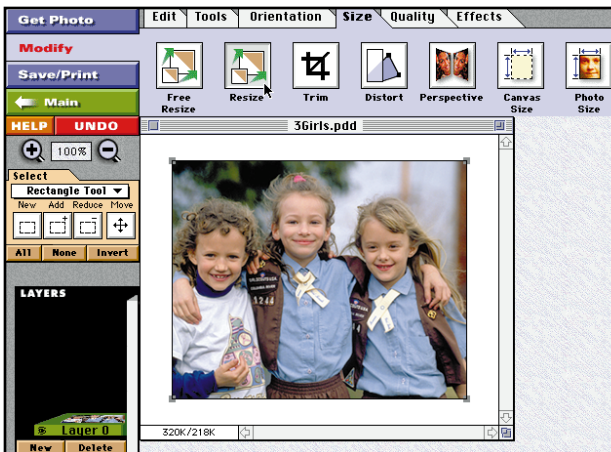
Once you've used some of Adobe PhotoDeluxe's built-in projects, it won't be long before you imagine projects you want to create on your own.

To work on your own, click the On Your Own button. (If you don't see the On Your Own button, click the Main button.)



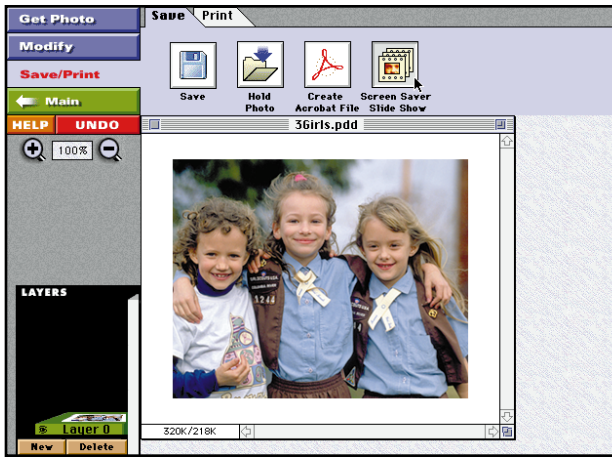
GET PHOTO

Click the Get Photo button to get your photo into Adobe PhotoDeluxe. For instructions on how to bring photos into Adobe PhotoDeluxe, see “Getting photos into Adobe PhotoDeluxe” on page 15.



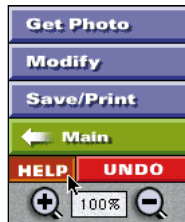
MODIFY

Click the Modify button to edit, touch up, and transform your photos. You can move among the different tabs in any order you want. Click a tab to see more editing buttons. You can use as many or as few buttons as necessary in any combination. Some editing buttons require a selection. For instructions on how to make selections, see “Making selections while working on your own” on page 27.



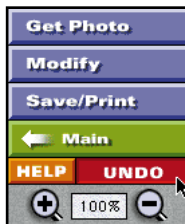
SAVE/PRINT

Click the Save/Print button to save and print your projects. Here's where you also find the button for adding your photos to the After Dark screen saver. For instructions on how to save or print your photo, see "Getting photos out of Adobe PhotoDeluxe" on page 21.



NEED MORE HELP AS YOU WORK?

Click the Help button to display the online help, which contains complete information on all of Adobe PhotoDeluxe's features. Refer to the online help when you have questions about a tool, command, or topic.



CORRECTING A MISTAKE

Experiment as you work and don't be too concerned about making mistakes. If you make a change that you don't like, click the Undo button. In most cases, Undo reverses the last change. If you want to reverse all unsaved changes, choose File > Revert to Last Saved.



LONG MENU

If you prefer to choose commands from menus, choose File > Preferences > Long Menu. This displays all of Adobe PhotoDeluxe's buttons in menus along the top of the screen, and lets you choose extra Effects filters that do not appear as buttons. To hide the long menu, choose File > Short Menu. (Note that the guided activities do not have corresponding menus.)

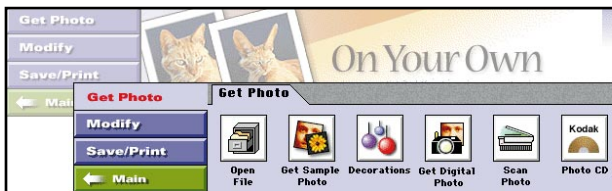
Getting photos into Adobe PhotoDeluxe



To use a photo with Adobe PhotoDeluxe, it has to be converted electronically into a digital photo that can be read by your computer. Photos can be converted electronically with scanners or by having them developed onto either a Kodak® PhotoCD® or floppy disk. You can also use other devices such as digital cameras to get photos into Adobe PhotoDeluxe.



To open photos in Adobe PhotoDeluxe, use the buttons on the Get Photo tab. The Get Photo tab appears in every project in the Guided Activities area.

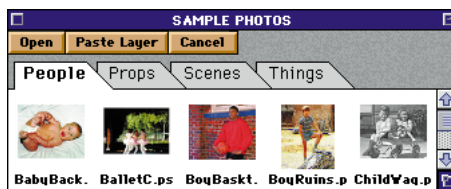
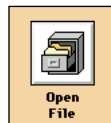


If you are in the On Your Own area, click the Get Photo button.

FROM A HARD DISK

Use the Open File button to open photos you have already saved on your hard disk.

- 1 Click the Open File button.
- 2 Select the file you want and click OK (Windows) or Open (Macintosh).

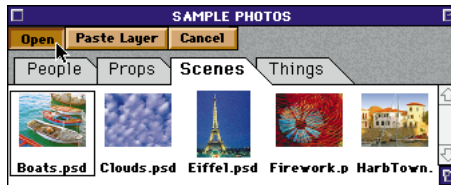


FROM THE ADOBE PHOTODELUXE CD-ROM

Use the Sample Photo button to open one of the sample photos on the Adobe PhotoDeluxe CD-ROM. The Adobe PhotoDeluxe CD-ROM must be in your CD-ROM drive for you to use the sample photos.



1 Click the Sample Photos button.



2 Click a category tab to see the photos in that category. Select the photo you want and click Open.



FROM A DIGITAL CAMERA

Use the Get Digital Photo button to open photos on your digital camera directly in Adobe PhotoDeluxe. Consult the camera's documentation for instructions on installing any of the manufacturer's software and connecting the camera to your computer.



1 Click the Get Digital Photo button.

2 Select your camera from the list of available cameras and scanners and click OK. If your camera isn't listed, see "About scanners and digital cameras" on page 19.



3 Double-click the photo you want.



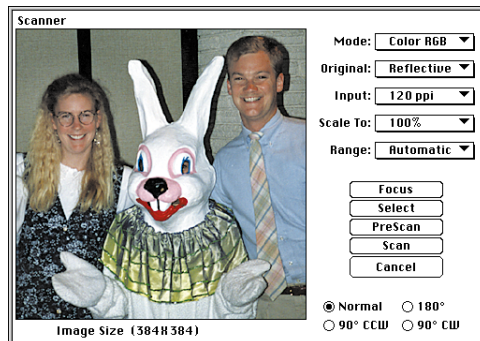
FROM A SCANNER

Use the Scan Photo button to scan a photo directly into Adobe PhotoDeluxe if your scanner has an Adobe Photoshop™-compatible plug-in module or is TWAIN-compliant. Check your scanner's documentation to see if it meets either of these requirements. For more information on scanning, see "About scanners and digital cameras" on page 19.



- 1 Click the Scan Photo button.
- 2 Select your scanner from the list of available scanners.

If your scanner is TWAIN-compliant, choose Select TWAIN Source or Select TWAIN_32 Source (Windows), or TWAIN Acquire (Macintosh) to select your scanner for the first time. After you've used the scanner once, choose TWAIN to use the scanner. This opens software supplied by your scanner's manufacturer.



3 Use the manufacturer's software to control the scanning process. Consult the documentation included with the scanner for instructions on using this software.

4 When you return to Adobe PhotoDeluxe, choose File > Save As. Type a name for the photo, choose a location, and click Save.

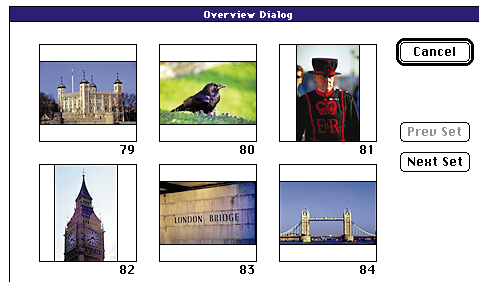
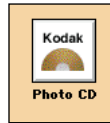


FROM A KODAK PHOTOC D

Use the Kodak PhotoCD button to open a photo from a PhotoCD. PhotoCDs provide high-quality digital photos in a convenient format and a large amount of storage. Up to 100 color photos or 150 black-and-white photos can be stored on a PhotoCD.

1 Insert the PhotoCD into your CD-ROM drive.

2 Click the PhotoCD button.



3 The Overview dialog box displays six photos at a time. Click Next Set and Previous Set to browse through the photos. Click the photo you want.

4 Choose a size from the pop-up menu and click OK. In most cases, Small or Default are the best choices.



FROM A FLOPPY DISK (PICTURES ON DISK)

To open a photo that a processing center has developed onto floppy disk for you, insert the floppy disk into your disk drive, and click the button on the Get Photo tab that corresponds to your floppy disk format.

If your floppy disk format does not have a corresponding button, use the software provided by the service that developed your photos onto floppy disk to save your photos to your hard disk in the PICT or TIFF format. Then use the Open File button to open the photos

in Adobe PhotoDeluxe. See “From a hard disk” on page 15 for instructions on opening a photo saved to your hard disk.

ABOUT SCANNERS AND DIGITAL CAMERAS

To use a scanner or digital camera with Adobe PhotoDeluxe, it must have an Adobe Photoshop-compatible plug-in module; scanners or cameras that are TWAIN-compliant can also be used with Adobe PhotoDeluxe. A plug-in module is software that extends the functionality of Adobe PhotoDeluxe.

To install a plug-in module on Windows, drag the plug-in into the Adobe PhotoDeluxe Plug-ins folder. On the Macintosh, drag the plug-in module into the Acquire/Export folder in the Adobe PhotoDeluxe Plug-ins folder.



Acquire plug-in modules for scanners and digital cameras appear in the list of available scanners and cameras in the Select Camera or Scanner dialog box. This dialog box appears when you click either Scan Photo or Get Digital Photo.

If your scanner or digital camera does not have an Adobe Photoshop-compatible plug-in module or is not TWAIN-compliant, you can use the manufacturer’s software to obtain your photos and then save them to your hard disk as TIFF or PICT files.

For the best output on:	Use this resolution:
Macintosh monitor	72 pixels per inch (ppi)
PC monitor	96 ppi
300 Dpi inkjet or laser printer	100 ppi
600 Dpi inkjet or laser printer	150 ppi
725 Dpi inkjet printer	150 ppi

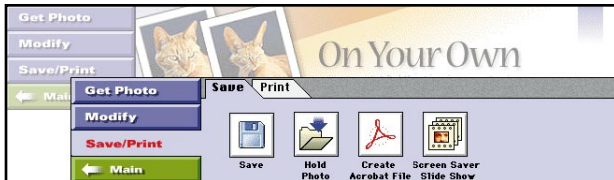
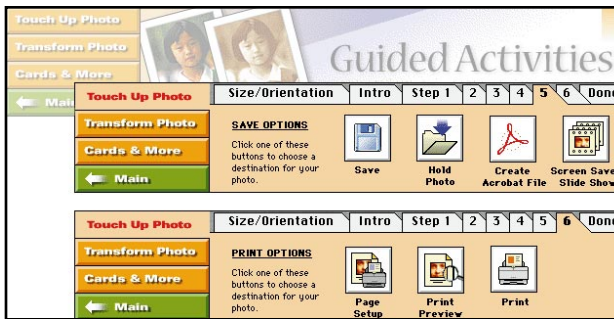
Setting a scanning resolution

When scanning a photo, you set a scan *resolution*, or number of pixels per inch (ppi). The resolution you choose affects the final quality of the images and should be based on how you will display the final images. The table shown here recommends resolutions for common uses. Scanning at a resolution higher than the recommendation will not increase the quality of your image but will increase the file size and thus slow down the program.

Getting photos out of Adobe PhotoDeluxe

When you finish transforming a photo with Adobe PhotoDeluxe, you can print it, you can add it to the After Dark screen saver, or you can export it into a letter or document you create with word-processing or desktop-publishing software.

To get your photos out of Adobe PhotoDeluxe, use the buttons on the Save and Print tabs, with the exception of exporting. The Save and Print tabs appear in every project in the Guided Activities area.



If you are in the On Your Own area, click the Save/Print button.



TO A PRINTER

Use the Print button to print your photos or completed projects using your own printer. If you want to print a photo at your local copy center, first ask the center which file format they require for printing. Many centers use TIFE, an image format supported by many Windows and Macintosh applications. Export the photo in the required format (see page 23 for instructions) and copy it to a floppy disk. If the file is too large to fit on a disk, use a program such as WinZip, DiskDoublerr™, or Stuffit™ to compress the file in size first.



1 Click the Print tab, and then click the Print button.

2 Enter the number of copies you want and click Print (Macintosh) or OK (Windows).

If you are using a color inkjet printer, consult your printer's documentation for recommended paper types. Most color inkjet printers produce the best results with coated paper that doesn't absorb too much ink. In many cases, printer manufacturers ship coated or glossy paper samples with their printers. Special paper stocks are available at computer stores, office-supply stores, and copy centers.



TO THE AFTER DARK SCREEN SAVER

Use the Screen Saver Slide Show button to add a photo to the After Dark screen saver slide show. When the screen saver is activated, it displays all the photos you've added, cycling through them as a slide show. Using the After Dark control panel, you can choose which photos to display, set the time between slides, and select other options.



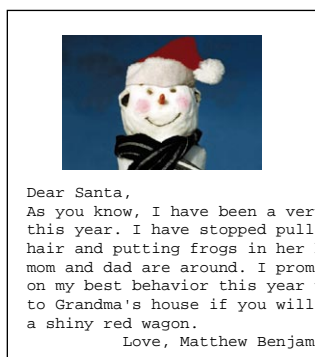
1 Click the Save tab, and then click the Screen Saver Slide Show button.

2 Type a name for the photo and click Add Photo to Slide/Screen Saver Folder.



3 Click Go to Slide/Screen Saver Player to set After Dark options. Click the copyright box at the bottom of the control panel for a description of the After Dark options.

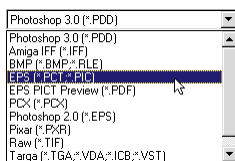
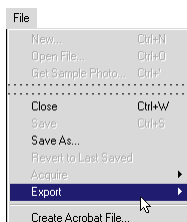
4 When you've completed setting After Dark options, return to Adobe PhotoDeluxe and click Done.



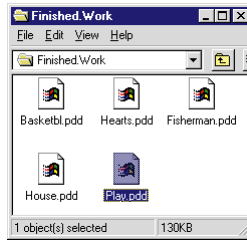
TO ANOTHER SOFTWARE PROGRAM

Use the Export command on the File menu to place your photos in letters, announcements, newsletters, and other documents you create with your favorite word-processing or desktop-publishing program. Adobe PhotoDeluxe can export your photos to formats accepted by most word-processing and desktop-publishing programs.

1 Choose File > Export > File Formats.



2 Select a format from the File Format pop-up menu. Type a name for the file, choose a location, and click Save. Most word-processing and desktop-publishing programs accept TIFF, EPS, or PICT formats. For details on the different file formats, see the Adobe PhotoDeluxe online help.

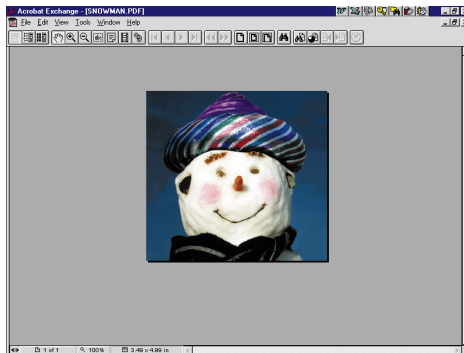


TO DISK

Use the Save button to save your photos and projects to disk. Keep in mind that it's good practice to save frequently to avoid accidentally losing any work.

- 1 Click the Save button.
- 2 Type a name for the file, choose a location, and click Save.

The Save button saves your photos in the Adobe PhotoDeluxe format. To save a photo in another format, use the Export command. See “To another software program” on page 23 for exporting instructions. To save your photo with another name, choose File > Save As.



TO AN ADOBE ACROBAT FILE

Use the Create Acrobat File button to save photos and projects in Portable Document Format (PDF). PDF files retain all the graphics, formatting, and fonts of the original document and can be opened by anyone with a Macintosh, Windows, UNIX®, or DOS Acrobat viewer—regardless of whether the original application or fonts are on the viewing system.

- 1 Click the Create Acrobat File button.
- 2 Type a name for the file, choose a location, and click Save.



PREPARING PHOTOS FOR TRANSFER OR USE ON THE INTERNET

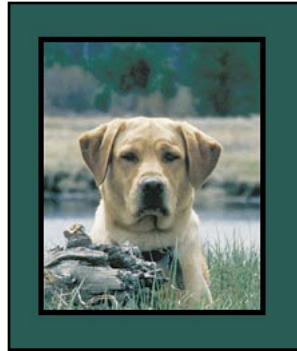
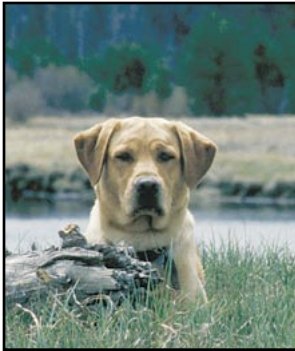
Use one of the Internet guided projects, located under the Transform Photo category in the Guided Activities area, to prepare your photo for transfer and display over e-mail or on a World Wide Web page. You can also get your photo ready to use with Adobe PageMill™, Adobe's page-authoring software for the World Wide Web. You can drag and drop a photo from PhotoDeluxe directly onto a page in PageMill.

The amount of time required to transfer and display a file over the Internet is directly proportional to the file's size. Larger files require more time to transfer electronically over phone lines. When you use the Internet guided projects, Adobe PhotoDeluxe reduces the file size of your photo by decreasing its resolution to 72 ppi (the resolution used for online display), and by saving it in either GIF or JPEG format. Both formats apply file compression techniques that minimize your photo's electronic transfer time. See the Adobe PhotoDeluxe online help for information on resolution, and the GIF and JPEG formats.

Making selections while working on your own



If you want to modify only an area in a photo, instead of the entire photo, you have to *select* that area before you modify it. For example, if you want to copy part of a photo and paste it onto a different background, you select the part of the photo you want before you copy it. In this example, we used the Polygon tool to select the girl before we copied her image and pasted it onto the new background.



The selection tools let you select regularly and irregularly shaped areas. In this example, we made a rectangular selection to create a border. Then we filled the background with green using the Selection Fill button. We added the thin black border using the Outline button.



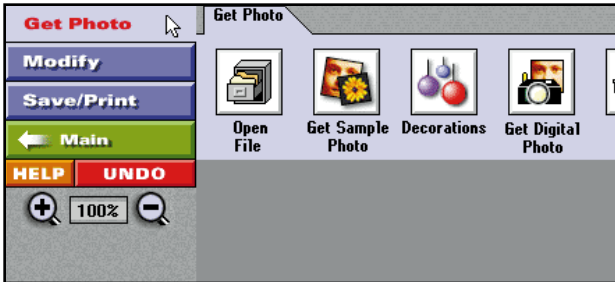
You can also select an area that is all one color with the Color Wand tool. For example, in the photo on the far left, it was easy to select the girl by selecting the blue background behind her and then inverting the selection so everything in the photo except the background was selected. We then copied her image to the Clipboard, pasted it into the photo on the right, and resized it.



CHOOSING A SELECTION TOOL

The selection tools are on the Select tab that appears only in the On Your Own area when you click the Modify button.

1 Click the On Your Own button. (If you don't see the On Your Own button, click the Main button.)

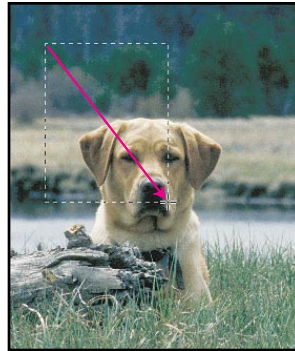
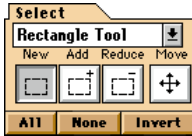


2 Click the Get Photo button to open a photo. See “Getting photos into Adobe PhotoDeluxe” on page 15 for instructions on opening photos.



3 Click the Modify button.

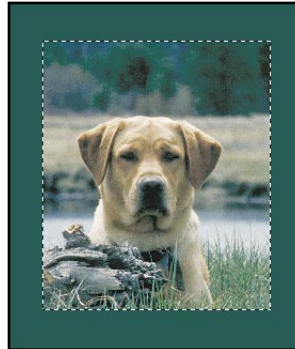
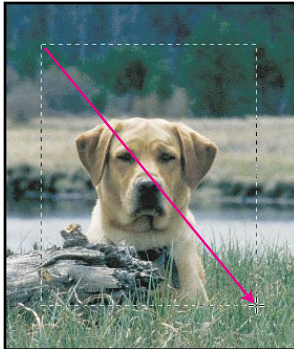
4 Choose the tool you want from the pop-up menu under the Select tab, and click New.



SELECTING BASIC SHAPES

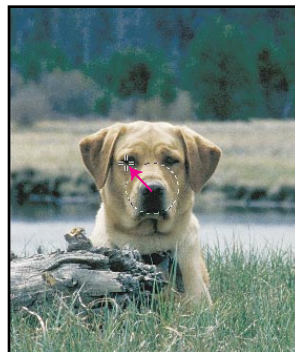
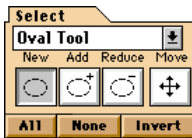
To select regularly shaped areas, use the Square, Rectangle, Oval, and Circle tools.

1 Choose one of these four tools. Then hold down the mouse button and drag across the part of the photo you want to select.



2 When the area you want to select is enclosed in the selection border—the dotted lines—release the mouse button.

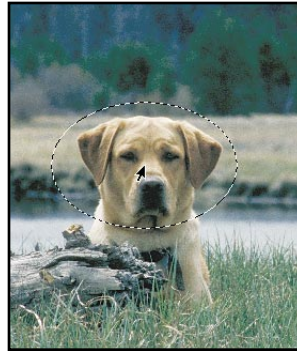
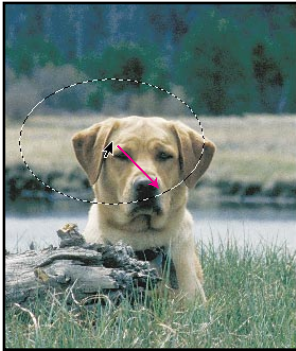
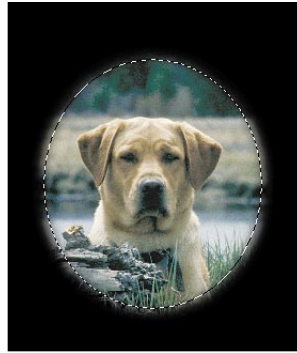
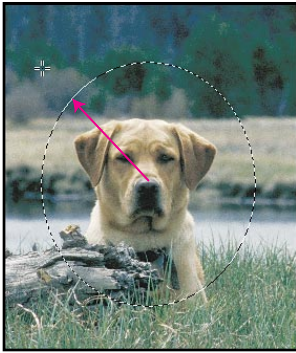
In this example, we used the Selection Fill button—click the Modify button, and then click the Effects tab—to delete the area outside the selection border and fill it with color.



SELECTING SHAPES FROM THE CENTER

By default, the Square, Rectangle, Oval, and Circle tools draw the selection border from its edge. It's often easier to select a circular shape from its center.

1 To draw the selection border from its center, hold down the Alt key (Windows) or the Option key (Macintosh) while you drag.



2 Release the mouse button to complete the selection.

In this example, we started the selection by positioning the cursor over the dog's nose, holding down the Alt key (the Option key on Macintosh), and dragging. We then used the Feather button—click the Modify button, and then click the Effects tab—to create the soft-edged background fill.

MOVING THE SELECTION BORDER

If you make a selection that is the right shape and size for the area you want to select, but it isn't in the correct location, you can move the selection border to cover the area you want.

1 Make sure a selection tool is active, and move the pointer inside the selected area.

2 Hold down the Ctrl and Alt keys (Windows) or the Command and Option keys (Macintosh), and drag the selection border into place. To move the selection border in small increments, hold down these keys and use the arrow keys on the keyboard.



SELECTING BY COLOR

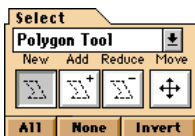
To select an area by color, use the Color Wand tool. Selecting by color can often be easier than outlining an irregular shape.

Choose the Color Wand tool, and click in the area you want to select in the photo. Adobe PhotoDeluxe selects the area adjacent to where you clicked that is the same color.



In this example, we selected the background, and then used the Paste Into button—click the Modify button, and then the Edit tab—to paste in a new background we had on the Clipboard.

Note: The range of color that is selected when you use the Color Wand tool is determined by the tolerance setting. To change the tolerance setting, choose File > Preferences > Cursors. A higher value selects a broader range of colors. A lower value selects a narrower range. Values can be from 0 to 255.



SELECTING IRREGULAR SHAPES

To select irregularly shaped areas, use the Polygon or the Trace tool. Both of these tools let you select part of a photo by dragging around it. The Polygon tool also lets you make straight-edged selections by clicking.

1 Choose the Polygon tool, and drag around the area you want to select.



2 To select a straight-edged area, such as the peak of the girl's hat, click at each end of the straight edge.



3 Continue dragging or clicking until you return to where you started, and then double-click to complete the selection. The selection border—the dotted lines—appears to let you know the selection is complete.

In this example, we copied the little girl to the Clipboard, and then pasted her onto a more appropriate background. (The Cut and Paste buttons are on the Edit tab when you click the Modify button.)



ADDING TO SELECTIONS

Once you have selected an area, you can add to it using any of the selection tools.

In this example, we accidentally completed the selection before the girl was entirely selected. We can add the unselected portions to the area already selected without having to start over.



1 To add to a selection, choose the desired tool and click the Add button.



2 Drag or click to select the area you want to add.



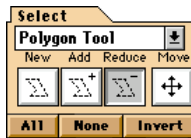
You can also use the Add button to select more than one area. In this example, we used the Color Wand and the Add button to select both sides of the girl's cape.



REDUCING SELECTIONS

You can also reduce the size of a selected area using any of the selection tools.

In this example, we need to remove the extraneous area on the left side of the girl from the selection.



1 To reduce a selection, choose the desired tool and click the Reduce button.



2 Drag around or click the area you want to remove from the selection.



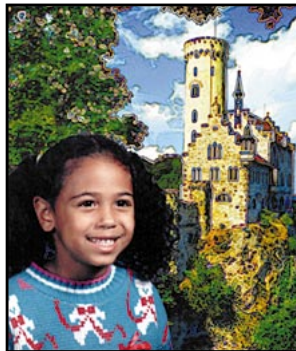
SELECTING THE UNSELECTED AREAS OF A PHOTO

Sometimes it is more convenient to make a selection by selecting the area you don't want to modify, and then inverting the selection.

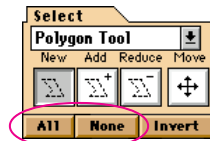
1 Use any selection tool to select the area you don't want to modify.



2 Click the Invert button.



In this example, we used the Color Wand tool to select the blue background behind the girl, and then inverted the selection, instead of using the Polygon tool to select the girl. We then copied her to the Clipboard, pasted her onto the new background, and scaled her down in size.



SELECTING AND DESELECTING ENTIRE PHOTOS

To select an entire photo, click the All button. To deselect all selected areas in a photo, click the None button.



MOVING AND COPYING SELECTIONS

Drag a selection to move it.

1 Position the pointer inside the selection border.

2 Hold down the mouse button and drag the selection into place. To limit the direction of movement to a multiple of 45 degrees, hold down the Shift key as you drag. You can also press the arrow keys on the keyboard to nudge the selection in any direction. To nudge the selection by larger increments, hold down the Shift key as you press an arrow key.



To make a copy of the selection, hold down the Option key (Macintosh) or the Alt key (Windows) as you drag.

Using layers to create a photo collage



You use layers in Adobe PhotoDeluxe to create a collage. Each layer is like a transparent sheet of plastic on which you can place a photo, add text, or paint. The layers are stacked one on top of the other, and where there is nothing on a layer, you can see through to the layers below.

Layers enable you to experiment freely with different combinations of photos, text, and graphics without affecting the photo underneath. For important information on managing layers so that they don't slow down the Adobe PhotoDeluxe program, see "Managing layers" on page 43.

1 Prepare the photos you'll be using in your collage. If you need to trim or clean up a photo, or if you want to apply a special effect, it's easier to make these changes before you put a photo into a collage. You can use any of Adobe PhotoDeluxe's guided activities to help you prepare a photo.

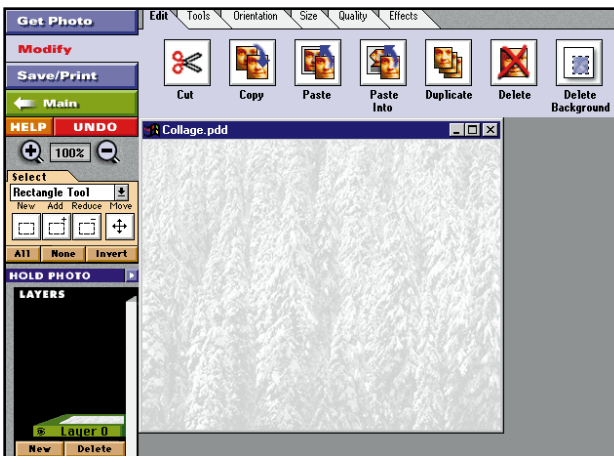




2 Once you've prepared a photo for the collage, put it on hold. If you are using a guided activity, click the Hold Photo button at the end of the procedure. In the On Your Own area, click the Save/Print button. Click the Save tab, and then click the Hold Photo button. Name the photo and click Save. The photo is closed and saved to a special subdirectory on your hard disk. This enables you to open and prepare other photos you want in your collage.

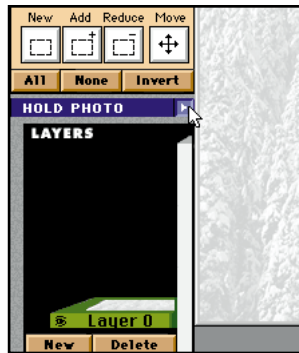


3 Repeat steps 1 and 2 for all the photos you want to add to the collage.



4 Make sure you are in the On Your Own area, and then choose one of the following options:

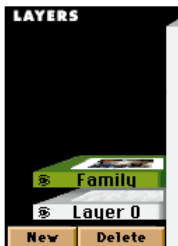
- To use one of your prepared photos as the background, retrieve it from the Hold Photo window. See step 5 for instructions.
- To use a colored or plain background, choose File > New, and enter a desired size. Use a resolution of 120, and click OK. In most cases, this should be adequate. To fill the background with color, click the Modify button, then the Tools tab, and then the Color Change button. Click the color swatch to select a color from the palette, and then click anywhere on the blank background.



5 Click the Hold Photo bar to open the Hold Photo window.



6 Double-click the photo you want to add to the collage, or select the photo and click Paste Layer.

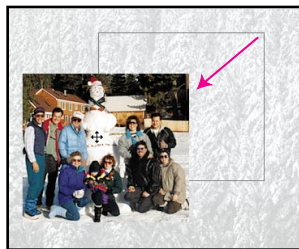
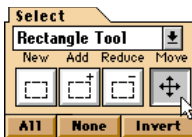


7 Adding a photo automatically creates a new layer. Name the layer using a short, descriptive name. This will make it easier to identify the layer as you work on your collage. Click OK.

The new layer appears in the Layers area above the background layer and is highlighted in green. The layer listed at the top of the Layers area is the topmost layer in the collage. The layer listed at the bottom of the Layers area is the bottommost layer of the collage.



8 If necessary, resize the photo. Click the Size tab, and then the Resize button. (If you don't see the Size tab, click the Modify button.) Drag one of the square handles that appear at the photo's corners to resize it. When you release the mouse button, Adobe PhotoDeluxe previews the resized photo. Move the pointer inside the resized photo so it changes into an OK, and then click to apply the resizing. (Click outside the photo to cancel the resizing.)



9 Click the Move tool under the Select tab. (If you don't see the Select tab, click the Modify button.) Drag the photo to move it into position.



10 Follow steps 5 through 9 to add the remaining photos to your collage.

***Note:** You can have up to six layers in a PhotoDeluxe collage. If you want to use more than six photos in your collage, you must merge two or more layers together. For more information on merging layers, see “Merging layers” on page 44.*

11 To modify a photo in the collage, select the layer in the Layers area. The highlighted layer is the active layer in the collage. Any changes you make affect only that layer.

12 When you are ready to print or export the collage, merge the layers to decrease the size of the file. See “Merging layers” on page 44 for instructions.

EDITING PHOTOS ON LAYERS

Once you've assembled the photos you are using in your collage, you can continue moving, arranging, hiding, and even blending layers to create your composition.

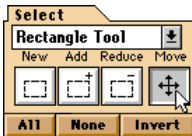
Moving layers

You can move a photo in your collage by dragging it with the Move tool.

1 In the Layers area, click the layer you want to move.



2 Click the Modify button, and click the Move tool under the Select tab.



3 Drag the layer into place. To constrain the movement to a multiple of 45 degrees, hold down the Shift key as you drag.



Rearranging the order of layers

You can use layers to rearrange the order of photos in the collage. In the Layers area, select the layer you want to rearrange and drag it up or down into position.

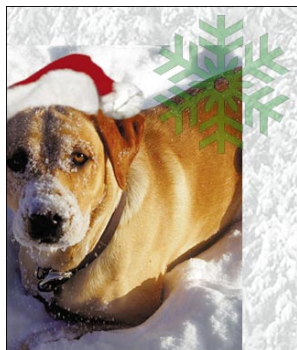
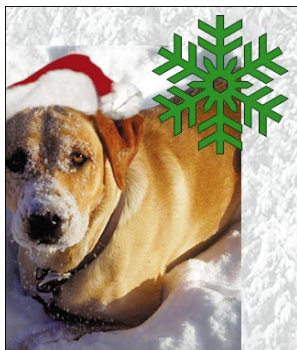


In this example, we dragged the Family layer above the other layers. The photo on the Family layer now appears on top of the photo on the other layers.



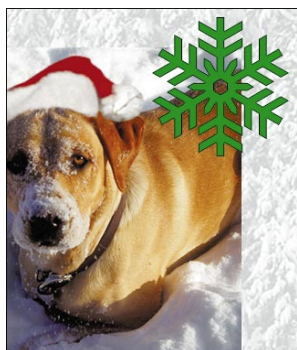
Hiding layers

You can make layers temporarily invisible to speed performance as you edit or to print only a portion of the collage. Only visible layers are printed. To show or hide a layer, click the eye icon. (When the eye is closed, the layer is invisible.)

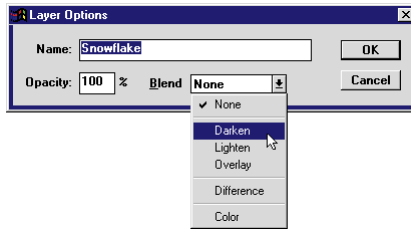


Blending layers

You can make the photos or decorations on layers blend together to create a variety of unique and interesting effects by using the Blend and Opacity options. The Blend options control how the photo on a layer blends with the photo below it. The Opacity option lets you make a photo semitransparent—like the snowflake in the image on the right—so that the photo on the layer below shows through. You can set these options when you create a new layer and change them at any time.



1 In the Layers area, double-click the layer you want to modify.



2 Set the Blend and Opacity options as desired and click OK.



In this example we made the snowflake partially transparent so the image on the layer below would show through, and we used the Darker blending mode to blend the colors of the overlapping areas together.



MANAGING LAYERS

When working with multiple layers, it's important to keep in mind that each layer you add to a photo increases the file size by the amount of the added photo. In Windows, Adobe PhotoDeluxe displays file size values in the status bar at the bottom of the screen. On the Macintosh, file size values appear in the box at the lower left corner of the document window. The first value indicates the file size as it would be sent to the printer, with all the layers merged. The second value indicates the size of the file if all the layers are kept independent. Working with large files can slow the operations of Adobe PhotoDeluxe.



Deleting layers

Because layers increase your file size and thus slow down editing and saving operations, it's important to delete layers that you no longer need.

1 In the Layers area, select the layer you want to delete and click the Delete button.

2 Click Delete Active Layer, and click OK.

In this example, we deleted the layer with the image of the snowflake.



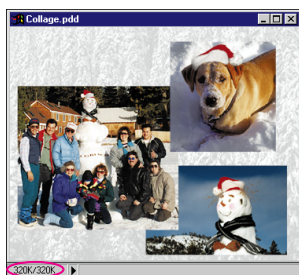
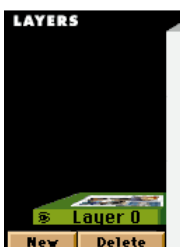
Merging layers

You can also reduce a file's size by merging, or combining, layers. You should only merge layers, however, when you are sure you no longer want to edit the layers independently.

1 Make sure that all the layers you want to merge are visible.

2 In the Layers area, click the Delete button, select Merge Visible Layers, and click OK.

In this example, we merged all the layers into one layer. The change is reflected not only in the Layers area, but in the file size as displayed in the box in the lower left corner of the document window. The second value is smaller now that the layers are merged.





Deleting held photos

Because PhotoDeluxe saves held photos to your hard disk, it's important to delete held photos that you no longer need. Note that deleting held photos cannot be undone.

1 Click the Hold Photo bar.



2 Select the photo you want to delete, and click Delete.

Tips and troubleshooting

This section contains solutions to problems you may encounter when using the program. For last-minute information not included in the printed documentation, see the Readme file installed with the program.

BEFORE YOU CALL TECHNICAL SUPPORT

There are several steps you can take before calling technical support to report a problem. Performing these steps can solve many problems and often eliminates the need for telephone assistance:

- Read this troubleshooting section for solutions to problems you encounter when using the application.
- See the Readme file, installed with the program, for last-minute information not included in this user guide.
- See the comprehensive online help for information on commands, tools, and techniques.
- If you are having problems scanning, or getting photos from a digital camera or other device, consult the documentation for that scanner or device.

In addition, you can try these remedies:

- Reset Adobe PhotoDeluxe default settings by throwing away the preferences file. To do this on the Macintosh, quit the application, open the Preferences folder in your System Folder, and drag the Adobe PhotoDeluxe Prefs file to the Trash. Then empty the Trash and restart Adobe PhotoDeluxe. In Windows, quit the application, and delete the Pd.psp file, located in the Prefs subdirectory inside the Adobe PhotoDlx directory. Then restart Adobe PhotoDeluxe.
- Make sure that any SCSI devices you are using are securely and fully connected to your computer and that device cords are not damaged. The cause of the problem could be a bad connection.

Message states “disk is full” or “scratch disk is full,” or the program is unusually slow.

Adobe PhotoDeluxe uses its own system of *virtual memory*—temporary hard disk space used for storing data when RAM is insufficient—called the *scratch disk*. Your scratch disk may be assigned to a disk that doesn’t have enough free disk space for your photo, or you may not have enough RAM. To assign your scratch disk to a hard disk, within Adobe PhotoDeluxe, select File > Preferences > Scratch Disks. If you have multiple hard disks, select your fastest hard disk. By default, the scratch disk is assigned to your startup disk.

If you have only one hard disk and you have been using the Hold Photo feature frequently, you should delete any held photos that you will not use. See “Deleting held photos” on page 45.

Check whether your computer has the minimum system requirements. For more information, see “Windows system requirements” on page 6 or “Macintosh system requirements” on page 7.

Operations seem unusually slow, or out-of-memory messages appear frequently.

Working with large files can slow the performance of Adobe PhotoDeluxe. Files can quickly increase in size as you add multiple layers. Each layer you add to a photo increases the file size by the amount of the original photo. That means that a photo with three layers is *three* times the size of the same photo with one layer. It’s important to manage layers in your files efficiently, merging them when you no longer need to edit the layers individually. See “Merging layers” on page 44 for more information.

If you are using photos from PhotoCD, make sure to use the Tiny, Small, or Default sizes. The Tiny size is approximately 2.7 inches by 1.8 inches and 128 kilobytes (KB). The Small size is approximately 5.3 inches by 3.6 inches and 288 KB. The Default size is approximately 10.7 inches by 7.1 inches and 1.13 megabytes (MB). Every size has the same resolution of 72 ppi. You may want to increase the resolution of these photos when printing them on laser or inkjet printers with resolutions of 300 dpi or greater. Keep in mind that increasing an image’s resolution may reduce its quality (see the online help for more information). See the table on page 19 for recommended resolutions based on planned use.

If you're using a Macintosh, your system setting—such as the size of the RAM cache (also called the disk cache, the portion of RAM used to hold recent information that's been read from disk) and use of System 7 virtual memory—may be slowing down Adobe PhotoDeluxe operations. The System 7 and Adobe PhotoDeluxe virtual memory schemes may be competing for hard disk space. To improve the speed of Adobe PhotoDeluxe, turn off System 7 virtual memory in the Memory control panel.

If you're using Windows, the disk cache and the RAM disk (the portion of RAM on which the system reads and writes files) may be slowing down operations. To improve Adobe PhotoDeluxe's speed, make sure that both the disk cache and the RAM disk are turned off.

A disk error occurs when using Adobe PhotoDeluxe or when trying to start the program.

The preferences file may have been corrupted, or some extensions may be conflicting with Adobe PhotoDeluxe.

Delete the application's preferences file. On the Macintosh, quit the program, and delete the Adobe PhotoDeluxe Prefs file, located in the Preferences folder inside the System Folder. In Windows, quit the program, and delete the Pd.psp file, located in the Prefs subdirectory inside the Adobe PhotoDlx directory. Then restart Adobe PhotoDeluxe. For instructions and additional remedies, see "Before you call technical support" on page 47.

A Win32s error occurs when using Adobe PhotoDeluxe.

Win32s files are a set of Windows files required to run Adobe PhotoDeluxe, a 32-bit application, under the Windows 3.1 or 3.11 (including Windows for Workgroups) 16-bit operating environments. Incompatibilities between Win32s files and various system hardware and system software settings may result in a Win32s error. For instructions on how to correct this problem, see the Win32s readme file installed with the Adobe PhotoDeluxe program.

Printing is unusually slow.

The resolution of your photo may be unnecessarily high for the resolution of your printer. To check the resolution of your photo in Adobe PhotoDeluxe, click the file size box, located at the lower left of the document window (Macintosh) or at the bottom of the screen (Windows). See the table on page 19 for recommended resolutions for various types of printers.

If you are using Apple Print Monitor on the Macintosh, you can also send the print job directly to the printer rather than spool the file to disk. To do this, select the Chooser from the Apple menu, select the printer you plan to use, and click the Background Printing Off option. However, you won't be able to use Adobe PhotoDeluxe until the print job finishes processing. You can also keep the Background Printing option turned on and increase the Print Monitor's RAM. To do so, open the Extensions folder inside the System Folder, click the Print Monitor icon, choose Get Info from the File menu, and increase the Memory Preferred Size value. Depending on the size of your file, you can try boosting the memory to 500K or 1000K.

A painting or editing tool doesn't seem to work.

Tools work on the selected layer and within any active selections on the layer. Make sure that the layer that you want to edit is selected (appears highlighted) in the Layers area. In the Layers area, click a layer to select it.

Index

- Add button 32
- Adobe PhotoDeluxe Online Help 14
- After Dark screen saver 22. *See also* Adobe PhotoDeluxe Online Help
- Blend options** 42
- Circle tool** 29
- collage, creating with multiple photos 37
- Color Wand tool 30
 - range of 31
- copying selections 35
- Create Acrobat File button 24
- Digital camera, using with Adobe PhotoDeluxe** 16, 19
- Export command** 23. *See also* Adobe PhotoDeluxe Online Help
- File formats.** *See* Adobe PhotoDeluxe Online Help
- file size, monitoring 43
- Get Digital Photo button** 16
- Get Photo button 13
- Guided Activities 11
- Held photo**
 - deleting 45
 - retrieving 39
- Hold Photo button 38
- Installation** 7
- Internet, transferring photos over 25
- Invert button 34
- Kodak PhotoCD** 18
 - image sizes, defined 48
- Layers**
 - and file size 43
 - blending 42
 - defined 37
 - deleting 44
 - hiding 42
 - merging 44
 - moving 41
 - rearranging 41
 - selecting in Layers area 40
- Layers area, defined 39
- Long Menu command 14
- Modify button** 13
- Move tool 40
- moving
 - layers 41
 - selections 35
- New button** 28
- New command 38
- On Your Own button** 13
- Opacity option 42
- Open File button 15
- opening photos 15
- Oval tool 29
- Painting.** *See* Adobe PhotoDeluxe Online Help
- PhotoCD 18
- PhotoCD button 18
- plug-in modules
 - acquire modules 19
 - defined 19
 - installing 19
- Polygon tool 31
- Print button 21
- printing 21
 - with color inkjet printers 22
- Rectangle tool** 29
- Reduce button 33
- resizing photo 40. *See also* Adobe PhotoDeluxe Online Help
- resolution, defined 20. *See also* Adobe PhotoDeluxe Online Help
- Revert to Last Saved command 14
- Sample Photo button** 15
- Save As command 24
- Save button 24
- Save/Print button 14
- Scan Photo button 17
- scanning photos 17, 19
 - setting resolution 20
- scratch disk, defined 48
- Screen Saver Slide Show button 22
- Select tab 28
- selecting
 - basic shapes 29
 - by color 30
 - deselecting 34
 - entire photos 34
 - from the center of a basic shape 29
 - irregular shapes 31
 - unselected areas 34

- selection border
 - defined 29
 - moving 30
- Selection tool, choosing 28
- selections
 - copying 35
 - extending 32
 - moving 35
 - reducing 33
- Short Menu command 14
- slide show 22
- special effects. *See* Adobe Photoshop Online Help
- Square tool 29
- starting Adobe PhotoDeluxe 9
- system requirements 6, 7
- Tolerance** 31
- Trace tool 31
- troubleshooting 47
- Undo** button 14
- Virtual memory**, defined 48
- Zooming.** *See* Adobe PhotoDeluxe Online Help