

# Application Pad **4.0** (September 1993)



[Introduction](#)

[What's new](#)

[Setup](#)

[AppPad4.INI File](#)

[The Application Pad](#)

[Other Features](#)

[Author's Information](#)

## Introduction

This program was inspired by the **Application Dock** of the **NeXTSTEP™** Operating System. Essentially, this software features a application pad from which the user can launch his or her favorite DOS and WINDOWS applications. The pad is strategically located on either the left or right side of the screen, leaving the rest of the screen uncluttered. In addition to its application launching capabilities, this software comes with a host of features such as a digital clock, a calendar, an **X-EYES** and a screen blanker.

## What's New

1. At last. This release of Application Pad has a built in **Virtual Desktop!**. There will be 4 virtual screens that you can use. Switching between screens is easy. Look up the [virtual desktop icon](#) help entry for instructions to use it.
2. A Window's setup program named **ApSetup.exe** is included from this version onwards. Use this setup program to install AppPad.
3. Users like you have requested for this and now it is done! You can now select between a single mouse click or double mouse click to launch applications. This selection can be made through the [Settings Dialog Box](#).
4. Although this feature was available from release **3.9**, it is still worth mentioning. You can now **drag** a file from Window's **File Manager** and **drop** it onto the pad and an entry will be created automatically for you. Look up the [Drag & Drop](#) help entry.
5. Also a **3.9** feature, in addition to executable files, now you can launch any file that has a valid [file association](#) assigned. That means a pad entry can also be a file of an extension other than EXE, COM and PIF.
6. Beginning from this release, all **unregistered** release will have a message box appearing at regular intervals. The reason I am doing this is obvious. Registered users will be instructed by letter on how to remove that message.
7. Also beginning from this release, future upgrades will not be free. It will cost **\$5** plus S&H for an upgrade. New releases will be uploaded to internet as and when they are available. (Upgrade from any previous version to **4.0** is still be free.)

## Setup



For Application Pad to execute correctly, you have to use the setup program included called **APSETUP.EXE**. Failure to do so will result in AppPad not being able to run at all.

Note: AppPad is designed for Windows 3.1 and above. It may not work with Windows 3.0 and earlier versions of Microsoft Windows.

## AppPad4.INI File

Application Entries

StartUp

Position

Clock

ClockHour

Eyes

ActiveWindow

OnTop

Sleep

ScreenBlanker

StartGroup

VirtualDesktop

SingleClick

TopOfPad

Offsets

## Application Entries

The number of applications that can be launched from AppPad is not limited to the vertical dimension of the screen (as in most other variations). In fact, you can have up to 50 entries in the AppPad4.INI file. As a matter of interest, the number 50 was chosen arbitrarily, and not because of programming constraints.

Each application entry must be in the following format:

```
entry number = application file / groupname ; [working directory] ; [icon file] ; [icon number] ; [starting status]
```

[ ] - indicate optional.

You can categorize your applications into different groups. The **application file / groupname** field will specify either an application file or a group name. A group name must always begin with the '#' character to differentiate it from an application file. For example, if you have a group named **[others]**, the **groupname** field should be **#others**. The **starting status** field will have no effect on entries that indicate groups.

**Note:** The **[applications]** group must be present.

Note that there should be NO blank spaces immediately before and after the semi-colons. Also, specify full pathnames for the files. While the **working directory**, **icon file**, **icon number** & **starting status** fields are optional, the semi-colons aren't!

The **working directory** field specifies the work directory of the application. The **icon file** field can take on **ICO**, **EXE** & **DLL** file types. Both EXE & DLL files can contain more than one icon; the **icon number** option allows you to select a particular icon. If you aren't sure which icon to choose initially, leave the field blank (and AppPad will default it to 0). You can make selection on the icon directly from the Pad later on. If the **icon file** field is left blank, AppPad will extract the icon from the **application file** instead.

The **starting status** determines how the application will look when it is first executed. It can have any of the following number:

0	-	normal window
1	-	minimized window / iconized window
2	-	maximized window

**Note:** There is an easier way to add new entries to the AppPad. Refer to help on [Inserting New Entries](#).

## StartUp

You can specify applications that you want to execute automatically when you first start up Windows. This is similar to putting icons into the **STARTUP** folder of the Program Manager. The application entries are placed under the group heading **[startup]** in the **AppPad4.INI** file. The format of the entries is:

entry number = application file ; [starting status]

[ ] - indicate optional.

The **starting status** determines how the application will look when it is first executed. It can be any of the following number:

0	-	normal window
1	-	minimized window / iconized window
2	-	maximized window

## Position

Nobody says the Pad has to be on the right side. For those who prefer the Pad to be on the left, change the value of **position** to 1. In short, 1 for Left & 0 for Right. This option can be changed dynamically from the [Settings Dialog Box](#).



## Clock



An optional digital clock is included in the Pad. It shows seconds, date, day of week and the month too. It can be enable by setting **clock** to 1 (0 to disable).This option can be changed dynamically from the [Settings Dialog Box](#).

## ClockHour

You can choose between a 12-hr clock and a 24-hr clock. The value of **ClockHour** should be set to either 12 or 24. This option can be changed dynamically from the [Settings Dialog Box](#).

For the 12-hr clock option, a small protruding button at the bottom right hand corner of the clock icon signifies AM, while a small depressed button signifies PM.

## Eyes



A pair of "eyes" that tracks the mouse cursor (and does nothing else) is included in the Pad. It is optional and can be enabled by setting **eyes** to 1 (0 to disable). This option can be changed dynamically from the [Settings Dialog Box](#).

## ActiveWindow

Have you ever experienced moving from one window to another and having to click on the destination window to make it active? Now, you can be saved the trouble of clicking! When the value of **ActiveWindow** is set to 1, positioning the mouse cursor on any (well, almost) visible part of a window will make it active.

This feature needs a bit of getting used to. Due to the strange way WINDOWS' windows are created, sometimes you may experience a "flipping active window" effect even when you are moving within the same window. However, this effect should not cause any harm. This option can be changed dynamically from the [Settings Dialog Box](#).

## OnTop

When enabled (set to 1), the Pad will always be on top. That is, it will not be overlapped by any windows except those that are created as always-on-top too. This option can be changed dynamically from the [Settings Dialog Box](#).

## Sleep

A screen blanking feature is available. Blanking time is variable by changing the value of `sleep` (in number of seconds). If the value is 0, screen blanking is disabled. This option can be changed dynamically from the [Settings Dialog Box](#).

## ScreenBlanker

There are a number of **screen blankers** for you to choose from. You can test and select any of the **screen blankers** available from the [Settings Dialog Box](#).

## StartGroup

This option specifies which application group for AppPad to start with. The default will be the [applications] group. This option can be changed dynamically from the Settings Dialog Box.



## VirtualDesktop

If set to 1, the Virtual Desktop Icon will show on the Pad when started up instead of the Tool Icon.

## SingleClick

When set to 1, a single left mouse button click on the Pad will launch the application. This feature can be altered using the [Settings Dialog Box](#).

## **TopOfPad**

System variable used by the AppPad. Do not alter value.

## Offsets

System variables used by the AppPad. Do not alter value.

## The Application Pad

**The application pad contains an icon for each entry. In addition, it holds several extra icons. Group icons (icons that jump to other groups) are differentiated from normal application icons by having a different background. The following are functions you can perform using the application pad.**

[Aligning the Pad](#)

[Drag & Drop Applications](#)

[Edit Entry](#)

[Exit](#)

[Help File](#)

[Icon Selection](#)

[Inserting New Entry](#)

[Launching Application](#)

[Movement](#)

[Removing Entry](#)

[Restart Feature](#)

[Scrolling](#)

[Tool Icon](#)

[Virtual Desktop Icon](#)

## Aligning the Pad

Double click the **right mouse button** once on the Pad (except on the AppPad Logo Icon) will cause the Pad to be aligned with the **top** of screen (if it is not already aligned). Double click it a second time will move it to the **bottom** of the screen, revealing only the essential system icons.

## Drag & Drop Applications

Here is another way to add new application entries to the Pad: You can drag an application directly from the **File Manager** and drop it onto the Pad and a new entry will be created.

## Edit Entry

To edit a current application icon entry on the Pad, position your mouse pointer over the application icon. Then, double click the **left mouse button** while holding down the **Ctrl** key and an **Edit Entry** dialog box will appear:



The image shows a dialog box titled "Pad Entry". It contains the following fields and controls:

- Application Name:** A text box containing "c:\windows\notepad.exe".
- Working Directory:** An empty text box.
- Icon Name:** An empty text box.
- Icon Number:** An empty text box.
- START:** A group box containing three radio button options: "Normal" (selected), "Iconized", and "Maximized".
- Buttons:** "OK" and "Cancel" buttons at the bottom.

Perform the necessary changes and click on the **OK** button to save changes or the **Cancel** button to ignore changes made.



## Exit

To exit **AppPad** (or Windows if AppPad is the shell), double click the left mouse button on the AppPad Logo Icon. The location of the Pad and the Icon selection changes will be saved.

## Help

This help file can be activated by double clicking the **left mouse button** on the background of the Tool Icon.

## Icon Selection

If the application contains more than one icon, you can select a particular one directly from the Pad. Position the mouse cursor directly over the program icon you want to change. Then, use the keyboard **Right** & **Left** arrow keys to scroll through the icons. The changes you make will only be saved upon exit or you when switch to another group. Using the Restart feature will cause the icon selection changes to be discarded.

## Inserting New Entry

To insert a new application entry onto the Pad, place your mouse pointer at the position you want to insert. Then press the **Ins** Key and a **New Pad Entry** dialog box will appear:.



The image shows a dialog box titled "New Pad Entry". It contains several input fields and a group of radio buttons. The fields are labeled "Application Name", "Working Directory", "Icon Name", and "Icon Number". The "START" group contains three radio buttons: "Normal" (which is selected), "Iconized", and "Maximized". At the bottom, there are three buttons: "Insert Before", "Insert After", and "Cancel".

Fill in the respective information of the new application entry. Click on the **Insert Before** button if you want the new entry to be inserted before the current icon. Click on the **Insert After** button if you want the new entry to be inserted after the current icon.

Note: You can also insert a new entry by [dragging](#) from the File Manager.

## Launching Applications

Applications are launched by double clicking the **left mouse button** on the program icons. Similar to the Windows Program Manager, an application will be launched as minimized if you hold down the **Shift** Key while you double click.

If the application file / groupname field contains a group, the Pad icons will be replaced by the application entries of the new group.

Depending on the starting\_status field of the entry, the application be started up accordingly.

## **Movement**

The Pad can be moved vertically. To move it, place the mouse cursor on any part of the Pad. Then depress the right mouse button. Keep the button depressed and move vertically, and the Pad will follow. Release the mouse button to stop.

On slower machines, the Pad movement may not be able to catch up with the mouse cursor. Thus, you may want to move a bit slower.

## Removing Entry

To remove an entry from the Pad, position your mouse pointer over the application icon of the entry you want to remove and press the **Delete** key. You will be prompted to confirm your request.

## Restart Feature

After making changes to the `AppPad4.INI` file while in WINDOWS, you **HAVE TO** execute the restart procedure. You can restart the AppPad by double clicking the right mouse button on the AppPad Logo Icon. Note that changes made to the selection of icons directly from the Pad will not be saved.

Alternatively, you can cause the program to reread the INI file by switching between groups (if you have more than one).

Note: If you switch from group A to group B, the contents of group A in the INI file will be overwritten with whatever is in memory. Thus, if you want to reread the contents of group A, you should currently be in some other group, edit the `AppPad4.INI` file and then switch to group A.



## Scrolling

If the `AppPad4.INI` file contains more application entries than the Pad can show at any one time, you can scroll the program icons on the Pad using the keyboard **Up** & **Down** arrow keys. **Home** key will bring you to the top of the program icons and **End** key will bring you to the bottom.

Another way to scroll the icons is to make use the Tool Icon.

## Tool Icon



The second Icon of Pad (the one just below the AppPad Logo Icon) is called the **Tool Icon**. It has 4 child icons that can be separately selected by double clicking the left mouse button.

The 'e' child icon will activate the Settings Dialog Box.

The '?' child icon brings up the About AppPad Dialog Box.

The 'Up' & 'Down' arrow child icon serve to scroll the programs icons on the Pad up and down. You can also make use of the keyboard to do this. (See Scrolling)

You if double click on the background of the **Tool Icon**, it will bring up this Help File.

## Virtual Desktop Icon



This icon hides behind the tool icon (the second icon from the top of the pad). You can switch to this icon by positioning your mouse cursor on the tool icon and using the right or left arrow keys on the keyboard.

To switch to other virtual screens using the mouse, depress the left mouse button on the numbers on the icon. Alternatively, if **AppPad** has the focus, you can use the keyboard numbers 1 to 4 (not the numeric pad numbers) to switch screens.

## Other Features

Associations

Immediate Blank Screen

Replacing Program Manager with AppPad

Settings Dialog Box

## Associations

AppPad makes use of the file extension associations to launch the native applications of files that are not themselves executable. For example, if the application name of an entry is `win.ini`, AppPad will open up this file with window's `NotePad` program.

Note: New associations can be created using Window's File Manager.

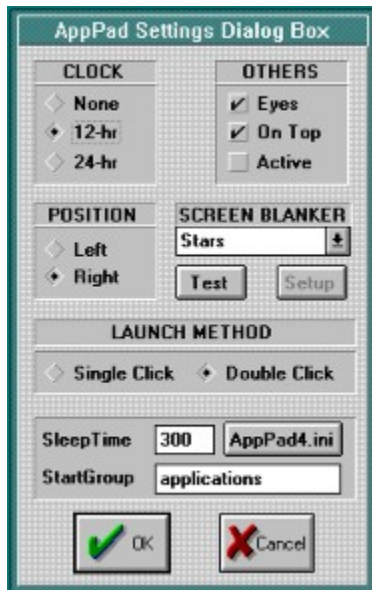
## Immediate Blank Screen

If the Sleep option is set to any value other than 0, you can activate the screen blanker immediately by resting your mouse cursor on the top right hand corner of your screen. The **screen blanker** used depends on the ScreenBlanker option in the [appad4.ini](#) file.

## Replacing Program Manager with AppPad

Yes, AppPad can be loaded as the SHELL, replacing the Program Manager. To do that, edit the file SYSTEM.INI located in your WINDOWS directory. Under the keyword **shell**, replace the filename **program.exe** with **{path}AppPad.EXE**.

## Settings Dialog Box



The new **Settings Dialog Box** allows to you to change most options dynamically within Windows. Changes made on most options are reflected immediately. You can edit the **APPAD4.INI** file by clicking on the **AppPad4.ini** button.



# Author's Information

I am a Computer Science Undergraduate at the University of Wisconsin - Madison. I am currently in my senior year and expecting to graduate in May 94. Programming is my favorite hobby. I really enjoy doing that.

I hope you have found this program useful. The **Application Pad** is **NOT** a **FREEWARE**. I have spent many hours to write it and I am constantly adding new features to it. You can keep and try this program for a maximum period of 15 days. After that, if you decide to continue using it, you are to register by sending **US\$20.00** to the address given below. Registered users will be given a registration number and will receive future upgrades at **\$5** (less shipping & handling). I will continue to upload new releases as they are available onto internet

**DISCLAIMER.** You use this program at your own risk. The programmer will not be held responsible for any ill effects that this program may cause to your system and any damage that may result.

(The programmer reserves the right to change any terms and conditions stated in this help file.)

I sincerely welcome queries and suggestions. Many of the new features were actually suggestions and requests from users like you. Please indicate the version number of the program you are currently using when you write.



On top of a Ski Mountain in Colorado :-)

**LEE, CJIN-PHEOW**

**203 Alhambra Place, #4  
Madison, WI 53713  
United States of America**

-----  
Copyright © September 1993

