

PrintFlip for Windows Help Contents

Introduction

Installation

Main

Registration

Miscellaneous

PrintFlip Introduction

Version 1.2

Copyright 93 by **Ling Siow Chang** & **Mei-Hsin Jenny Chang**

PrintFlip is a quick printer changer and setup for Windows. PF allows you to quickly switch from a printing device to another on the desktop without running control panel. You can also see the present printer at a glance. This is especially useful when a person (such as I) has a printer and a fax/modem. Furthermore, PF can switch Print Manager status fast. It also can change orientation on the fly. Tested with Windows 3.1. Replaces pftime. Please do distribute widely.

PrintFlip Installation

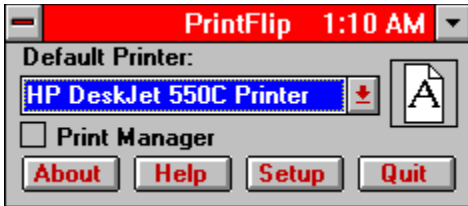
Files that come with PrintFlip:

PRINTF.EXE	- PrintFlip executable file
PRINTF.HLP	- PrintFlip help file
README.TXT	- PrintFlip readme file
APIGUIDE.DLL	- needed dll file

Methods:

1. You need the file **VBRUN200.DLL** (Visual Basic run-time file) in your Windows directory (\WINDOWS or \WINDOWS\SYSTEM) since this is a Visual Basic program. You can get it from where you obtain PrintFlip.
2. APIGUIDE.DLL should be copied to the \WINDOWS\SYSTEM directory.
3. The other files should be installed in their own directory (such as C:\WINUTIL\PRINTF).
4. Attach PRINTF.EXE icon to a Group (Startup group recommended) in Program Manager (easiest way is to drag and drop from File Manager).

PrintFlip Main



The main screen is full of printer information. The drop-down list shows the current active printer. The page icon shows the current paper orientation. The check box shows the state of the Print Manager.

Methods:

1. Choose from drop-down list to quickly change printer drivers.
2. Click on the page icon to toggle paper orientation.
3. Click on the check box to enable or disable Print Manager.
4. Click on the Setup button to open the printer driver setup dialog box.



The minimize icon of PrintFlip gives information about current active printer. The icon also shows information about Print Manager.



indicates no Print Manager.



shows that Print Manager is active.

Methods:

1. Select PrintFlip as active icon.
2. Press F2 to select the next printer driver. If the menu is open when PrintFlip is icon, clicking on the right mouse button will also achieve the same result.
3. Press F3 to toggle Print Manager status.

PrintFlip Registration

PrintFlip is a **shareware** program. Notice that there are no nag screens nor disabled options. If you find it useful, please do **register** as this encourage us to develop more useful programs. Registration is only US \$5.00. Site licenses are negotiable. Please include your name, address, and tel/fax number. If this is too expensive, do contact us. The benefits of registration is clear conscience. Nevertheless, if you have any comments (especially bug reports) or questions, do contact us.

Contact:

Ling Siow Chang & Mei-Hsin Jenny Chang

200 Central Avenue, C2

Jersey City, NJ 07307

Tel & Fax: (201) 798-8212

Internet: mchang@eniac.seas.upenn.edu or lchang@upenn5.hep.upenn.edu

PrintFlip Miscellaneous

History:

- v1.2 - new and more intuitive configuration interface, name changed to PrintFlip, status changed to shareware.
- v0.4 - fixed some bugs such as list and icon updates, refusal to start minimized. Also added the print manager feature. Better error trapping.
- v0.3 - first public release as pftime and donateware.

Software Solutions:

We offer customize software. Please contact us if you need a specialized application.

Other:

If you like the program, do share it widely with other people. Do upload it to all the BBS you can find especially popular commercial ones (which we currently has no access to). Try out our new Loader program that quickly switches between wallpapers and sounds.

Disclaimer:

PrintFlip carries no warranties nor guarantees. You assume all risk by using the program. If you use PrintFlip, it frees us of all liabilities. Windows and Visual Basic are registered trademarks of Microsoft.

