

## **CodePrint™ Contents**

### **Introduction**

[What is CodePrint?](#)  
[Benefits of Registering CodePrint](#)  
[Upgrade Information](#)

### **Commands**

[File Menu](#)  
[Page Menu](#)  
[Options Menu](#)  
[Help Menu](#)  
[Control Menu](#)  
[List](#)  
[Select File\(s\)](#)  
[Print File\(s\)](#)  
[Remove](#)  
[Clear All](#)

### **Procedures**

[Opening a Configuration](#)  
[Saving a Configuration](#)  
[Saving a New Configuration](#)  
[Changing the Printer](#)  
[Changing Fonts](#)  
[Changing Header/Footer](#)  
[Changing Page Layout](#)  
[Drag and Drop Printing](#)  
[Duplex Printing](#)  
[Using the Toolbar](#)  
[Using Multiple Instances of CodePrint](#)

### **Glossary**

[Defined Terms](#)

## **What is CodePrint?**

CodePrint™ is a Windows 3.1 compatible program for printing ASCII text files on any printer supported by Windows. What makes CodePrint unique is you have control over how the text is formatted on the page. You can open and save configurations that store the page formatting for the various text files that you normally print. For example, if you are a programmer you can save a configuration for printing your source code two-up on a page. Users of on-line services can save a configuration for printing README files or ON-LINE service listings. To save the amount of paper used, CodePrint has a duplex printing option that allows printing on both sides of the paper. A duplexing printer is not required but is supported. Features include:

- Portrait or Landscape paper orientation
- Multiple columns
- Include headers and/or footers that you define including filename, date and page number
- Change fonts, style and size
- Include border with column dividers or dividers ONLY
- Change left, top, right and bottom margin
- Change the spacing used to expand tabs
- Text automatically wraps if wider than column
- Change wrap symbol and turn ON or OFF
- Option to truncate lines at the right margin
- Option to include line numbers
- Open and save page setups
- Compatible with Windows 3.1 Drag-Drop feature using File Manager
- Duplex printing option - print on both sides of the paper
- Multiple instances of CodePrint allow you to drop files to several different configurations
- Maintains a list of most recently used (MRU) configurations

The Drag-Drop feature under Windows 3.1 allows you to select files from the File Manager and Drag and then Drop them over the CodePrint icon for printing.

## **Benefits of Registering**

CodePrint is distributed as shareware and you must therefore register the software if you continue to use the program beyond the 21 day evaluation period. When you register CodePrint you will receive the following benefits.

- Latest version of the software on disk
- On-line support from CompuServe or written support by mail
- Notification of low-cost upgrades
- Registration information to remove information screen during program start-up

If you use CodePrint print, please register by filling out the registration form and sending in your registration fee.

### ***Related Topics***

[Upgrade Information](#)

## Upgrade Information

Upgrades for CodePrint will be handled in the following manner. The three upgrade classifications are as follows.

- |  |  |
|--|--|
| <b>1 Bug fixes ONLY</b>                          | Increments version number in the x position as in 2.1x |
| <b>2 Minor enhancements w/possible bug fixes</b> | Increments version number in the x position as in 2.x0 |
| <b>3 Major enhancements w/possible bug fixes</b> | Increments version number in the x position as in x.00 |

Class 1 upgrades are **always** free to registered users by downloading the shareware version from one of many locations. If you have version 2.00 or higher, your current registration number will convert the shareware version to a registered version. If you have problems, please contact us. (See **contact information** below)

Class 2 upgrades are usually free as well. They can be downloaded in the same manner as class 1 upgrades. However, there may be occasions where a small fee is required for shipping and handling of a new disk. This fee will be between \$3-\$5 and is subject to change.

Upgrade notices will be sent for class 3 upgrades. Class 3 upgrades will require a small upgrade fee. If you decide to upgrade you would simply return the form with your upgrade fee. You will then receive a new disk of the latest version.

### Download Locations:

Current versions of CodePrint can always be found in the following locations.

**Compuserve** GO WINSHARE (lib 2)  
GO BCPPWIN (lib 5)  
GO ZNT:WINSOURCES (lib 3)

**America Online** Windows:Accessories

These locations are subject to changes by the individual on-line service.

### Contact Information:

If you have any questions and need to contact us, please send e-mail using one of the following on-line services or you may write us at the address below.

**Compuserve** ID: 72230,47

**America Online Mailing Address** ID: CGPARKER  
Micro Software Solutions  
PO Box 851504  
Richardson, TX 75085-1504  
USA

**Upgrade Schedule:**

Class 1 versions are uploaded to the on-line services listed above as required. Class 2 versions are uploaded about every 2-3 months. Class 3 versions are released about every 6-10 months. **Thank you for your support.**

## **File Menu**

The File menu includes commands that allow you to open and save page configurations, change printer settings and exit CodePrint. The File menu also includes a MRU list.

For more information, select the File menu command.

Open Configuration    Open the DEFAULTS or user saved configurations.

Save                    Save the current configuration.

Save As                Save as a new configuration.

Printer Setup         Change printer settings.

Exit                    Exit CodePrint.

## **Page Menu**

The Page menu includes commands that allow you to change the current font, header and footer text and page layout options.

For more information, select the Page menu command.

Font Change font.

Header/Footer Change header and footer text.

Layout Change page layout.

Info Display page information summary.

## Options Menu

The Options menu includes commands that allow you to change the way CodePrint operates.

For more information, select the Options menu command.

Use Path

Toggles Use Path option.

Ignore Form Feeds

Toggles Ignore Form Feed option.

Truncate Lines

Toggles Truncate Lines option.

Duplex Printing

Toggles Duplex Printing option.



## **Help Menu**

The Help menu includes commands that allow you to display help for various topics related to CodePrint.

For more information, select the Help menu command name.

[Contents](#)

[Search](#)

[About CodePrint](#)

## **Control Menu**

The Control menu, duplicates the most used commands as well as providing support for duplex printing when CodePrint is run as an icon. The following commands are only available from the Control menu by selecting the Application icon.

Open Configuration

Info

Duplex Printing

Print Pass 2

Cancel Pass 2

## List Command

The List push button on the main CodePrint window is used to populate the file list box with files in the current directory that match the wild card specification in the **File spec.** edit control. Therefore, if a file name is entered or displayed in this field, by selecting a file name from the file list box, the List push button is disabled.

## Select File(s) Command

The Select push button on the main CodePrint window is used to populate the print list box with the selection in the **File spec.** edit control. If the file spec. control contains a file name, the file name will be displayed in the print list box. If the file spec. control contains a wild card specification such as \*.txt, all the files in the current directory with a TXT extension are displayed in the print list box. If the file spec. edit control is blank, the Select push button is disabled.

## **Print File(s) Command**

The Print Files push button on the main CodePrint window is used to print all the files listed in the print list box located directly under the button. If the print list box is empty, this button is disabled.

### ***Related Topics***

[Duplex Printing](#)

## **Remove Command**

The Remove push button on the main CodePrint window is used to delete the file entry selected in the print list box. If the print list box is empty, this button is disabled.

## **Clear All Command**

The Clear All push button on the main CodePrint window is used to delete all the file entries displayed in the print list box. If the print list box is empty, this button is disabled.

## **Opening a Configuration**

To change the current configuration, select Open Configuration from the File menu or click the Open button on the toolbar, to display the Open Configuration dialog. The first configuration is always DEFAULTS. Other saved configurations are listed below DEFAULTS.

To load a configuration, highlight the configuration you want to open and press OK or double-click the highlighted line using the left mouse button. The selected configuration is now the current one with the configuration name displayed in the caption bar.



## **Saving Current Configuration**

To save the current configuration, select Save from the File menu. This option is GRAYED if no changes have been made. Alternately you can click the Save button on the toolbar.

The following information is saved with each configuration.

- Page specific - number of columns, margins, spacing for tabs, line number status, border, orientation and wrap symbol
- Font specific - size, style and type face
- Header specific - header text
- Footer specific - footer text
- Options status
- General - file spec., directory path and window position

## **Saving As a New Configuration**

To save the current configuration with a new name, select Save As from the File menu to display the Save As dialog. The current configuration name is displayed in the edit control.

To save the current configuration using the current name, press OK. To save the current configuration under a new name, type the new configuration name and press OK.

The following information is saved with each configuration.

- Page specific - number of columns, margins, spacing for tabs, line number status, border, orientation and wrap symbol
- Font specific - size, style and type face
- Header specific - header text
- Footer specific - footer text
- General - file spec., directory path and window position

## **Changing Printer Setup**

To change the default printer, page orientation or the duplex option (ONLY if supported by the printer), select Printer Setup from the File menu.

*Note: You can also change the page orientation from the Page:Layout menu item.*

### ***Related Topics***

[Status Bar Information](#)

## **Changing Fonts**

To change the current font, select Fonts from the Page menu to display the Font dialog. This is the font common dialog new to Windows 3.1.

Changing font, style or size affects both the page text and the header/footer text.

### ***Related Topics***

[Status Bar Information](#)

## Changing Header/Footer

To change the header and/or footer text, select Header/Footer from the Page menu to display the Header/Footer dialog. You can enter any text you want for either the header or footer. To access the file name, date/time or the page number you can press the appropriate push button along the bottom of the dialog, which will insert the formatting characters at the location of the **I-beam** cursor. For example, to produce the following footer

```
c:\files\readme\readme.txt - page 1
```

enter the following footer text in the footer edit control.

```
%f - page %p
```

Where %f inserts the file name and %p inserts the current page number.

For the header or footer to be printed, the header and footer check boxes must be checked. The middle and right status fields, located below Columns, displays the current status of the header and footer respectively. If "On" is displayed, the option is ON, while "Off" means disabled.

### ***Related Topics***

[Status Bar Information](#)

## **Changing Page Layout**

To change the page layout options, select Layout from the Page menu to display the page layout dialog. From the page layout dialog you can change or toggle the following page features.

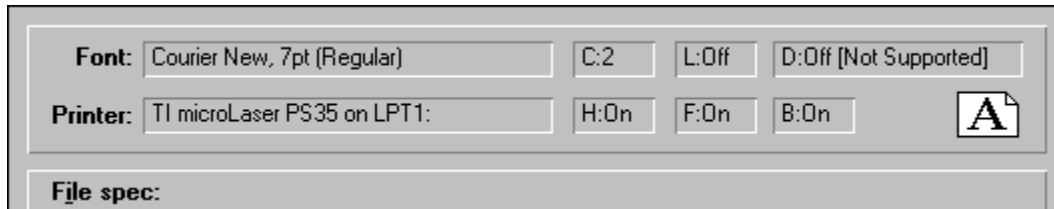
- Number of text columns per page
- The spacing used to expand tabs
- Enable printing a line wrap symbol
- Enable or disable line numbers
- The amount, in inches, for the left, top, right and bottom margins
- Page border with column dividers, column dividers only or no border or column dividers
- Page orientation which can be landscape or portrait

### ***Related Topics***

[Status Bar Information](#)

## Status Bar Information

The status bar, located directly below the toolbar displays the status of various CodePrint options. Click any control to get more information.



## **Drag and Drop Printing**

CodePrint takes advantage of the new Drag-and-Drop feature of Windows 3.1. CodePrint must be minimized to use Drag-and-Drop. To use the drag-and-drop feature, open File Manager and select the text file(s) you want to print. Then drag the files over a CodePrint icon and release the mouse button.

### ***Related Topics***

[Using Multiple Instances of CodePrint](#)



## Duplex Printing

Duplex printing allows you to save paper by printing on both sides of the paper. To use the duplex printing option with printers that do not internally support duplex printing, you must enable this feature by selecting Duplex Printing from the Options menu.

### *PRINTER DIRECTLY SUPPORTS DUPLEX PRINTING*

If you have a duplex printer you must change the duplex printing option from the Printer Setup dialog box. From the Printer Setup dialog box, choose the Options button. In the Duplex Printing group box, select the option you want to use. **(If your printer does not support duplex printing, this option will not appear in the dialog box.)** Choose the OK button and print as normal using either RESTORED MODE or MINIMIZED MODE. If you want to turn OFF duplex printing you must select the none option within the Duplex Printing group box.

*Note: It is recommended that you have a duplex printer if you use the Duplex Printing option on a network.*

### *SIMPLEX PRINTERS*

If you have a simplex printer, CodePrint will allow you to print on both sides of the paper by printing all the ODD pages first. You must then re-insert the sheets to print the EVEN pages on the opposite side of the page. Follow the procedures outlined below for either RESTORED MODE or MINIMIZED MODE.

*Note: HP is one printer manufacturer that does not recommend printing on both sides of the paper by turning over the paper and running it through the printer on the reverse side if you are using one of their simplex printers.*

### *RESTORED MODE*

Duplex printing requires two steps when printing on a printer that does not support built-in duplex printing. First you select the files you want to print and choose the Print File(s) button. After the files are sent to the printer or to Print Manager, the following message is displayed.

```
When printing is complete, turn sheets over and re-insert
in printer so the blank-side of the first sheet is on the
top. Then choose the Print File(s) button again.
```

Press OK. The files you printed will remain in the Print list box. Next, wait until all the sheets are placed in the output tray. Then place the sheets back in the printer's input tray and choose the Print File(s) button again to print on the back of the page as required. This completes duplex printing.

### *MINIMIZED MODE*

There is only a slightly different procedure to follow when CodePrint is minimized. After dragging the file(s) to the Application icon the following message is displayed.

```
When printing is complete, turn sheets over and re-insert
in printer so the blank-side of the first sheet is on the
top. Then choose Print Pass 2 from Control Menu.
```

Press OK. The icon now displays a **RED** light on the right side of the printer. This is an indication the pass 2 is pending. When pass 1 printing is complete, and with CodePrint still minimized select the application icon to display the Control menu. Now select **Print Pass 2** to complete duplex printing. The printer light on the icon changes back to BLACK. If you need to cancel Pass 2 printing select **Cancel Pass 2** from the Control menu.

Due to the variety of printers on the market, you may have to experiment with the order the sheets are output from the printer and the order and orientation required when placed back in the input tray. Therefore it is suggested that you print only one file with multiple sheets for test purposes.

### ***Related Topics***

Sheet Order

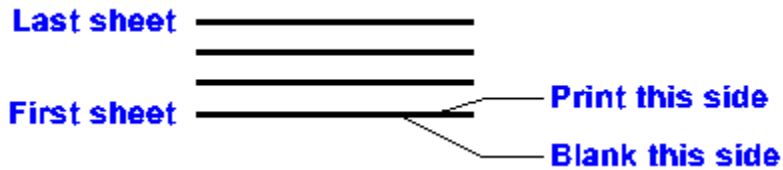
Duplex Printing Option Command

Control Menu

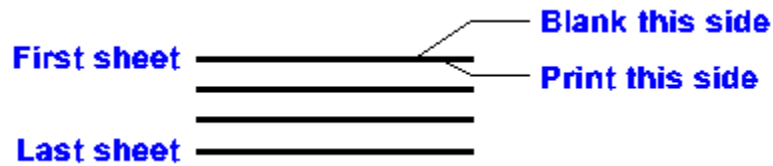
## Sheet Order

When duplex printing is enabled for simplex printers, you must pay attention to the order the sheets are placed in the output tray after the first printing pass and also the order they are placed back in the input tray for the second printing pass.

The output tray order should be as follows.



You should then turn the sheets over and place them back in the input tray as follows for the second printing pass.



You may need to experiment to get the front to back orientation you require. For example, try rotating the pages 180 degrees.

## Using the Toolbar

The toolbar, displayed below the menu bar, provides quick access to various commands.



Opens a configuration.



Saves the current configuration.



Displays the font dialog.



Displays the header/footer dialog.



Displays the page layout dialog.

The two status fields to the right of the buttons display the size, in bytes, and the date last modified for the file selected in the file list box. Initially these fields are blank and will not display information until a file is selected in the file list box.

## **Using Multiple Instances of CodePrint**

CodePrint supports multiple instances. Why would you want to do this? The obvious reason is with the Drag-and-Drop feature new to Windows version 3.1.

As an example suppose you normally switch between two different configurations. One prints two-up in landscape mode, the other prints one-up in portrait mode. To use this feature open the first copy, which is set to use the two-up configuration and minimize it. Now open a second instance and minimize it. Select the Application icon to access the Control menu. Select Open Configuration to open the one-up configuration.

Now when you want to print files using the two-up configuration simply drop them on that icon. To print one-up drop the files on the other icon.

### ***Related Topics***

Opening a Configuration

Drag and Drop Printing

Duplex Printing

## **Glossary**

application icon

configuration

control menu

DEFAULTS

edit control

MRU list

multiple instance

registered user

shareware version

## **Open Configuration Command**

Use this command to change the current configuration. Select Open from the File menu to display the Open Configuration dialog. The first configuration is always DEFAULTS. Other saved configurations are listed below DEFAULTS.

To load a configuration, highlight the configuration you want to open and press OK. The new configuration name is displayed in the caption bar.

## Save Command

Use this command to save the current configuration. This command is initially GRAYED. If changes are made to the current configuration the Save command is enabled.

For a visual indication of when changes have been made, the window title displays an '\*' between the application name and the configuration name as shown.

CodePrint \* [Readme]

After changes are saved by selecting Save from the File menu or clicking the Save button on the toolbar, the title bar changes as shown.

CodePrint - [Readme]

To save the current configuration under a new name select Save As from the File menu.

The following information is saved with each configuration.

- Page specific - number of columns, margins, spacing for tabs, line number status, border, orientation and wrap symbol
- Font specific - size, style and type face
- Header specific - header text
- Footer specific - footer text
- Options status
- General - file spec. and directory path



## **Save As Command**

Use this command to save the current configuration with a new name. Select Save As from the File menu to display the Save As dialog.

The following information is saved for each configuration.

- Page specific - number of columns, margins, spacing for tabs, line number status, border, orientation and wrap symbol
- Font specific - size, style and type face
- Header specific - header text
- Footer specific - footer text
- Options status
- General - file spec. and directory path

## **Printer Setup Command**

Use this command to change various printer options. Select Printer Setup from the File menu to display the Printer Setup dialog. You can change printer options such as default printer, page orientation and duplex options (if supported by the installed printer).

To control duplex printing for a duplex printer, choose the Options button and select the duplex option you want to use within the Duplex Printing group box.

## **Exit Command**

Select Exit to close CodePrint.

## **Font Command**

Use this command to change the current font used for printing. Select Font from the Page menu to display the Font dialog. Changing the font, style or size changes both the page text and the header and footer text.

## **Header/Footer Command**

Use this command to change the header and/or footer text. Select Header/Footer from the Page menu to display the Header/Footer dialog. You have the option to include or not include header and footer text. You can enter any text and optionally include format codes to insert the File Name, Date/Time or Page number in the header or footer.

## **Page Layout Command**

Use this command to change the page layout options. Select Layout from the Page menu to display the Page Layout dialog. From the Page Layout dialog you can change number of columns on a page, the number of spaces used to expand tabs, toggle printing of the line wrap symbol or change symbol, toggle printing line numbers, toggle printing without or with a border with column dividers or column dividers only, change page orientation, and change the left, top, right and bottom margin.

## **Page Info Command**

Use this command to display summary information for the current configuration. Information displayed in this dialog supplements information not displayed on the toolbar or status sections of the main window.

The following summary information is shown.

- Characters per line and lines per page
- Current status of Option menu items
- Current margin settings

### **Use Path Option Command**

Use this command to toggle the option to use the path saved with a configuration. When this option is checked, CodePrint will use the path and file spec. saved with the current configuration as the working directory during startup and when a saved configuration is opened.

If this option is not checked, CodePrint will use the default working directory, as listed in the Program Managers "Program Item Properties" dialog for the CodePrint icon item, during startup and when a saved configuration is opened.



### **Ignore Form Feeds Option Command**

Use this command to toggle the option to ignore form feed characters. When this option is checked, CodePrint will ignore form feed characters within a text file.

If this option is not checked, CodePrint recognize form feed characters by advancing to the next page.

### **Truncate Lines Option Command**

Use this command to toggle the option to truncate text printed on the page. When this option is checked, all lines are truncated if wider than the page.

If this option is not checked (default), all lines wider than the page will wrap to the next line.

## **Duplex Printing Option Command**

Use this command to toggle the option to enable duplex printing when using a simplex printer. When this option is checked, CodePrint will print on both sides of the paper. If a duplex printer is the default printer, this option is ignored.

If this option is not checked (default), or the none option (from printer setup) is selected for duplex printers, only one side of the paper is used.

*Note: It is recommended that you ONLY print to a duplex printer when using the duplex option on a network.*

### ***Related Topics***

Duplex Printing

## **Help Contents Command**

Use this command to display the help index for CodePrint.

## **Help Search Command**

Use this command to display the help search dialog for locating specific help topics.

## **Help About CodePrint Command**

Use this command to display the about dialog for CodePrint. This dialog contains copyright information, version number, current Windows mode and Windows resource information.

## **Open Configuration Command**

The Open Configuration command on the Control menu displays the Open Configuration dialog from the Application icon. This command is only accessible from the Application Icon.

### ***Related Topics***

Opening a Configuration

## **Info Command**

The Info command on the [Control menu](#) displays the summary information dialog. This command is only accessible from the [Application icon](#).

## ***Related Topics***

[Info](#)



## **Duplex Printing Command**

The Duplex Printing command on the Control menu toggles the option to enable duplex printing when using a simplex printer. This command is only accessible from the Application icon.

### ***Related Topics***

Duplex Printing

## **Print Pass 2 Command**

The Print Pass 2 command on the Control menu starts pass 2 when duplex printing is enabled for simplex printers. This item is grayed until after one or more files are dropped on the application icon. This command is only accessible from the Application icon.

## **Cancel Pass 2 Command**

The Cancel Pass 2 command on the Control menu cancels pass 2 of duplex printing. This item is grayed until one or more files are dropped on the application icon. This command is only accessible from the Application icon.

## Page Layout Dialog

The Page Layout dialog allows you to change the number of columns on a page, the number of spaces used to expand tabs, toggle printing line numbers, toggle printing without or with a border with column dividers, change paper orientation, and change the left, top, right and bottom margin.

The following chart list the DEFAULTS settings.

Column s	Tab	Wrap Status	Wrap Symbol	LN	Border
1	8	ON	===>	OFF	BORDER

Orientation	Left	Top	Right	Bottom
PORTRAIT	0.05"	0.05"	0.05"	0.05"

If you are using a dot matrix printer and the right or bottom margins are off the page, you may want to change the margins as follows.

Left	Top	Right	Bottom
0.10"	0.30"	0.10"	0.30"

You may have to experiment to find the margin settings that work correctly with your printer.



## **Contents**

The Contents contains a list of all Help topics available for CodePrint. For information on how to use Help, press F1 or choose Using Help from the Help menu.

**Application icon**

A graphic that represents a running application. This icon appears only after you start an application and then minimize (reduce) it.

## **Configuration**

A configuration stores program options. You can therefore change settings such as the font and font size and save this information under various names. The default configuration is always available if you want to load the application defaults.



## **Control Menu**

This menu, also known as the System menu, contains commands you use to manipulate a window. The control menu is also available when an application is minimized to an icon. To access the control menu click on the box located next to the title bar of the window or select the application icon when minimized.

**Default**

The DEFAULTS configuration retains the settings as shipped.

## **Duplex Printer**

A duplex printer prints on both sides of the paper. A duplex printer is recommended when printing to a network printer.

**Edit Control**

A edit control is a field for retrieving information from the user that is required by the application program.

## **MRU List**

The most recently used (MRU) list provides quick access to recently used configurations, without accessing the Open Configuration dialog. When a configuration is opened, its name is placed as the first name in the MRU list, located on the File menu above Exit. Up to 4 configuration names are listed at any one time. Older names are removed from the list.

**Multiple Instance**

Multiple instance refers to running more than one copy of an application.

## **Registered Users**

A registered user is a thoughtful person who paid the required fee to register CodePrint. As a registered user you are entitled to various benefits such as free support and notification of upgrades.

## **Shareware Version**

A shareware version of CodePrint displays 2 opening NAG screens when the program is first loaded. Once the software is properly registered, these screens will no longer appear.



## **Simplex Printer**

A simplex printer prints on one side of the paper. To implement duplex printing on this type of printer you must turn the paper over and run it through the printer on the reverse side.

**Font**

Displays the currently selected printer font name, size and style.

**Printer**

Displays the currently selected default printer.

**Columns**

Displays the number of page columns in the format C:#, where # is the number of columns.

**Line Numbers**

Displays the status of the line number option in the form L:Off or L:On.

**Duplex Mode**

Displays the status of the duplex option selectable from the menu and duplex support for the selected printer in the form D:Off [#] or D:On [#], where # is "Supported" if the printer has built-in duplex support or "Not Supported" if the printer does not support duplex printing.

**Headers**

Displays the status of the header option in the form H:Off or H:On.

**Footers**

Displays the status of the footer option in the form F:Off or F:On.



**Border**

Displays the status of the border option in the form B:Off or B:On.

**Page Orientation**

Displays the status of the page orientation currently selected.



