

**Certificate Retrieval**

**Instructions**

**for external customers using**

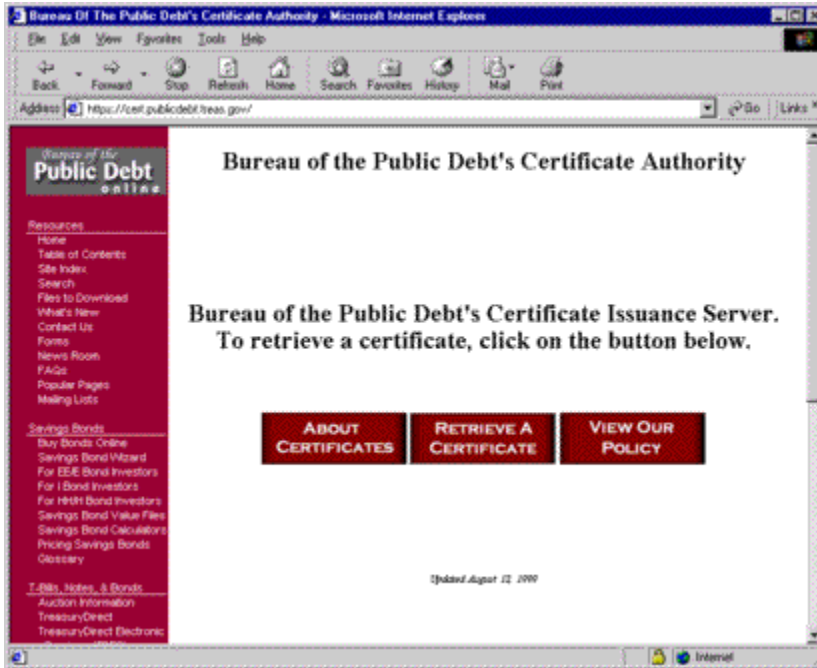
**Internet Explorer 4.0.1 on NT 4.0**

Updated 12/6/1999

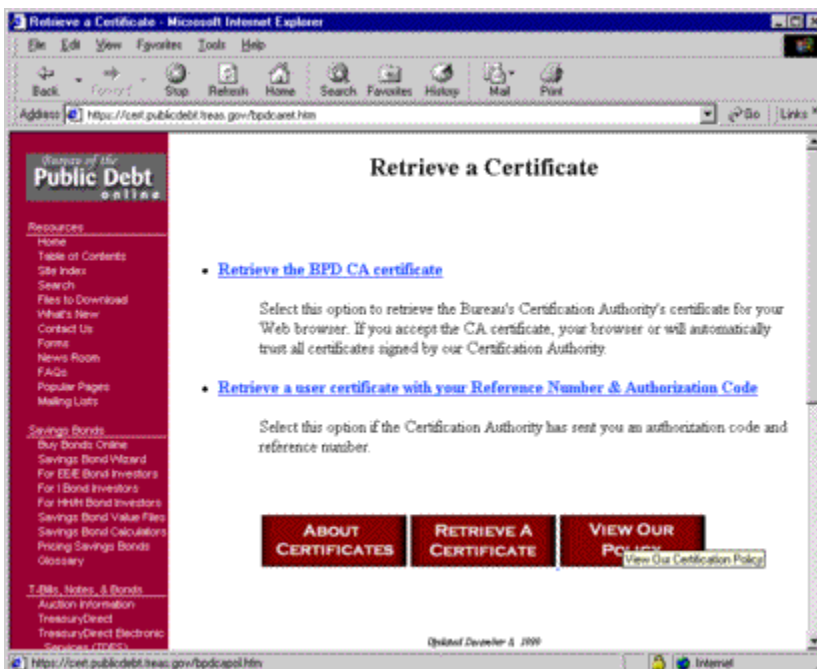
*Prepared By:* The Internet Services Group

*Office of Information Technology*  
*Division of Technical Services*  
*Distributed Systems Branch*

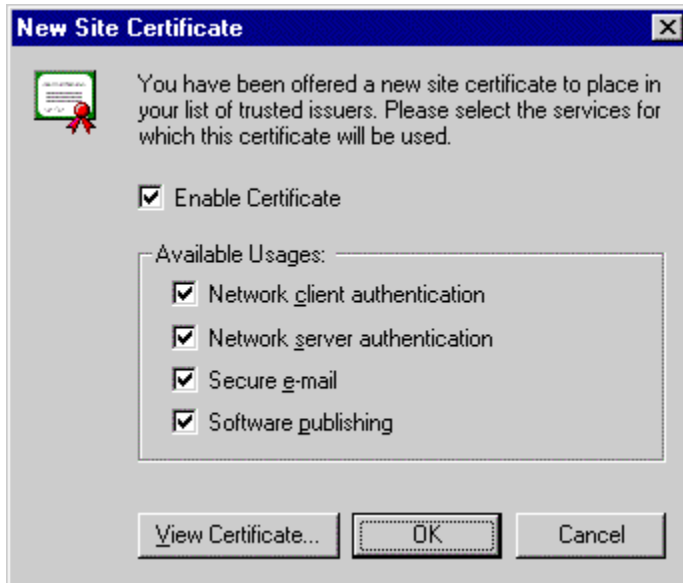
1. Ensure that your current configuration of Internet Explorer matches one of the supported browsers in the list of “BPD CA Supported Browsers”.
2. Point your web browser to : <https://cert.publicdebt.treas.gov/>
3. The following page should appear:



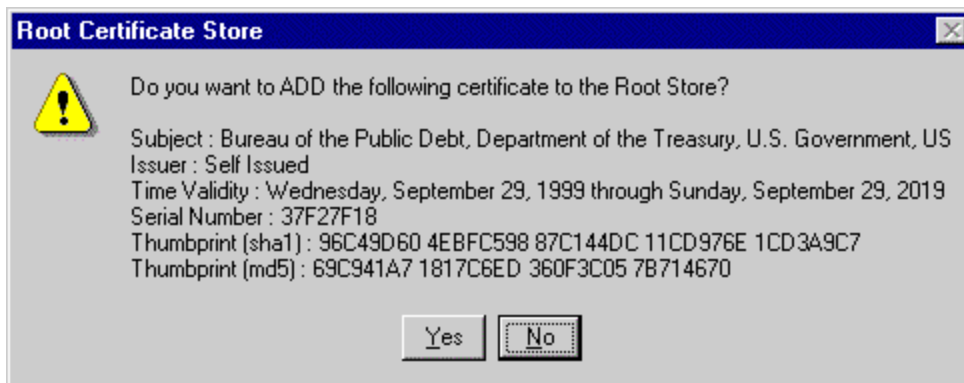
4. Select “Retrieve a Certificate”. Pending the version of the browser that you are using is supported, you will either receive an error page notifying you that your browser is not supported, or you will see the following page:



5. Select **“Retrieve the BPD CA certificate”**.
6. Depending if you have ever downloaded a certificate before, a **“File Download”** dialog may appear asking you to either: a. **“Run this program from its current location”** or b. **“Save this program to disk”**. Select **“Run this program from its current location”**, then select **“OK”**. The following dialog will appear:

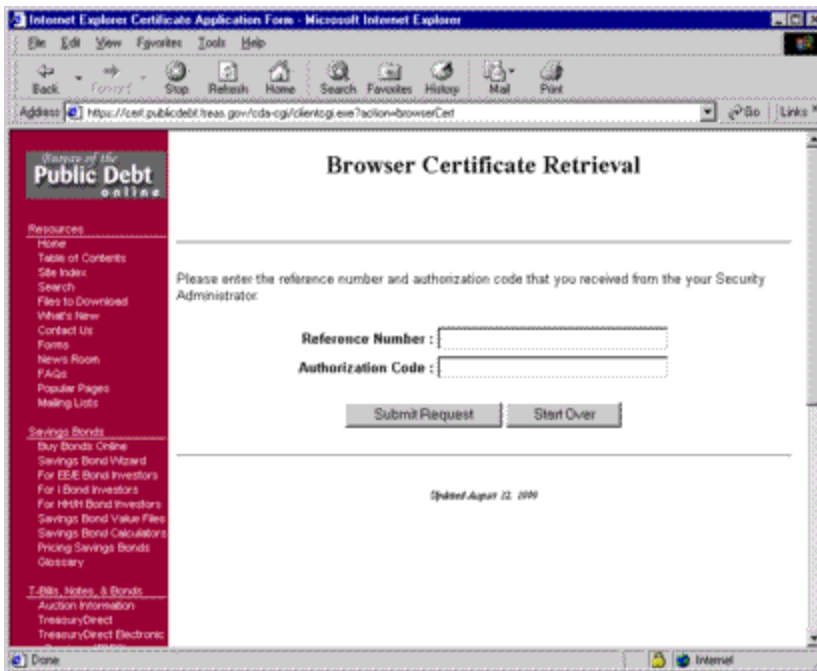


7. Ensure all options are selected and select **“OK”**. The following dialog will appear:

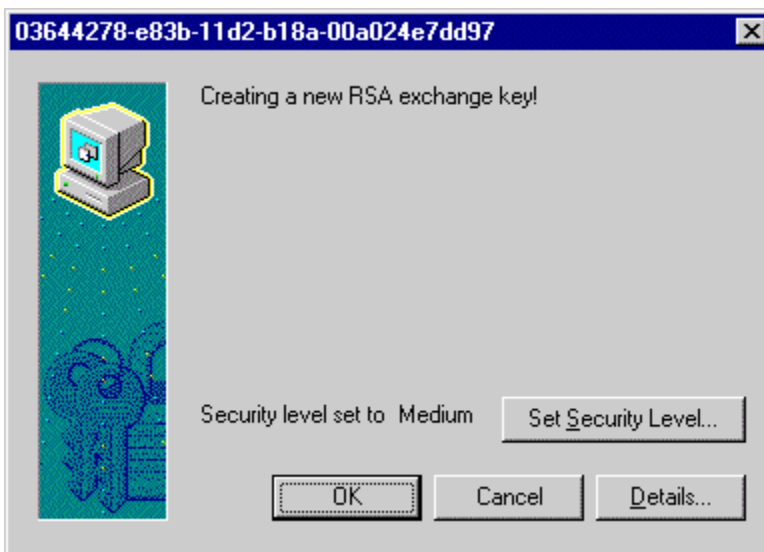


8. Verify the following information:
  - a. That the Subject (CA ) is: **“Bureau of the Public Debt, Department of the Treasury, U.S. Government, US”**.
  - b. That the Issuer (CA) is: **“Bureau of the Public Debt, Department of the Treasury, U.S. Government, US”**.
  - c. That the Thumbprint(sha1) is: **“96C49D60 4EBFC598 87C144DC 11CD976E 1CD3A9C7”**
9. Select **“OK”**. Select **“Yes”**. This will allow your browser to add the BPD CA’s Public Key Certificate into your database of trusted certificate authorities. In order for your personal verification certificate to work you must complete this first.

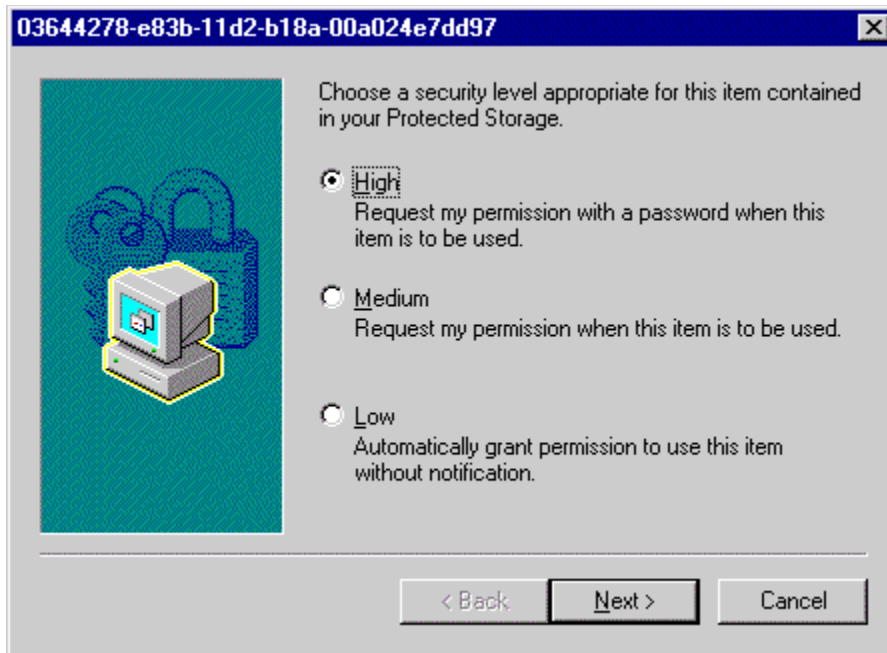
10. You should now be back to the “**Retrieve a Certificate**” page in your web browser. Select “**Retrieve a user certificate with your Reference Number & Authorization Code**”. The following web page will appear:



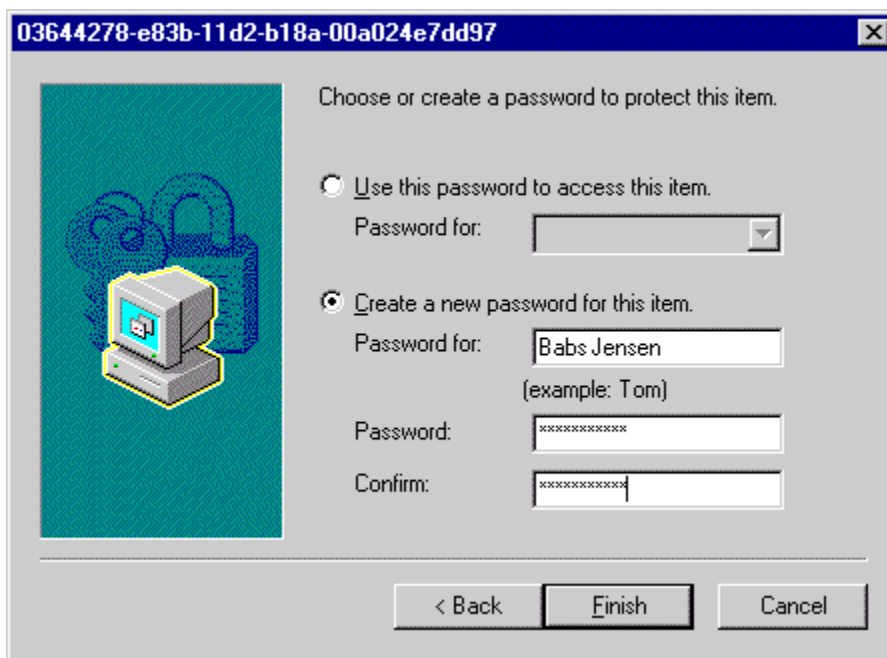
11. Insert the Reference Number & Authorization code that is printed within your burst pack and select “**Submit Request**”. The following dialog will appear:



12. Select “**Set Security Level**”.

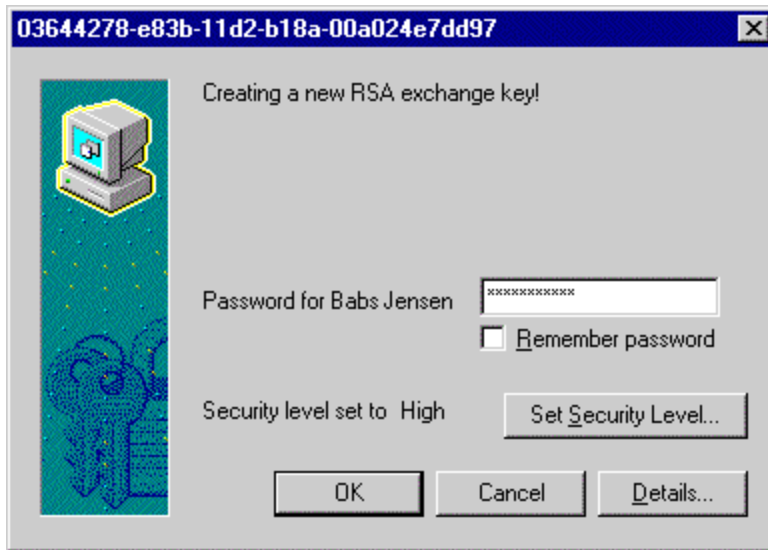


13. Select “**H**igh”, then Select “**N**ext”.



14. Insert an identity (Make up a username, do not use the example above), and enter a password. This is the password that protects your certificate’s private key. This password will have to be remembered so you can use your certificate, or create new certificates. It is recommended that you create a password at least 8 (Eight) characters long, contains no words from a dictionary. We also recommend that it includes a combination of upper and lowercase characters, numbers, and special characters.

15. When you are finished, select “**F**inish”.



16. Enter your password and select “**OK**”. In about 15 to 30 seconds you should receive a confirmation that you have successfully retrieved your certificate.