

# TreeChart 2.00 Introductory Information

This file gives a quick overview of TreeChart, then summarises the features new for version 2.00.

## WHAT CAN TREECHART DO FOR YOU?

TreeChart is a comprehensive Windows package for preparing Organization Charts or illustrating other hierarchical (or nearly hierarchical) information. No drawing skills are required: box sizing, positioning, alignment and the routing of connecting lines is all done automatically whenever you make a change.

The package offers a wide choice of chart styles, box shapes, shadows and line routing options. Full color and font support. A border and titles can also be added.

For Company Organization Charts, it automatically positions and connects boxes you indicate as being assistants or shared employees.

TreeChart assists you in achieving consistent-looking charts with Layouts. Layouts control how boxes look, and how they connect to boxes below them. You can define any number of Layouts; when you change a Layout, it automatically affects every box using the Layout. Layouts are like style guides found in more sophisticated word processors. When you add a box it will initially use the Layout you select as most likely needed, given its position in the chart.

Layouts, default Layouts and other chart settings can be saved as Template Files. Preparing one chart is easy; preparing further similar charts is easier still. Using Templates, you can import text from another program and produce attractive charts almost instantly!

TreeChart offers outlining facilities, to let you view only parts of your chart, and hide the rest of it. You can view, change or print the whole chart, certain levels of management, or just single departments.

If you wish, TreeChart will automatically scale your chart to fit on a single sheet of paper. You can also preview printing.

TreeChart will import text (and automatically create boxes) from other Windows programs, and can export text or fully-scaleable WMF pictures. Pasting pictures into word processor documents and resizing them is simple.

Includes online manual & tutorial (Windows Write format), full context-sensitive help and sample charts.

## SYSTEM REQUIREMENTS

TreeChart requires a PC-compatible running Windows 3.1 or better. **IT WILL NOT RUN UNDER WINDOWS 3.0.**

A mouse is not required, but is recommended. A small number of non-essential operations are unavailable without a mouse.

Use of TrueType fonts, or comparable third-party font technology such as Adobe Type Manager is highly recommended.

## ONLINE DOCUMENTATION

The TreeChart User Guide (TREECHRT.WRI) and Tutorial (TUTORIAL.WRI) are both in Windows Write format. If you feel the need to print these documents, be warned that they total about 140 pages, and are formatted for using a 9" by 7" region of an A4 page.

Additionally, TreeChart has full online help using the standard Windows Help facility. This file is TREECHRT.HLP.

The file SAMPLES.WRI describes the sample charts included in the package.

## **WHAT IS SHAREWARE?**

TreeChart is not free. It is not public domain. Just like a program costing ten times as much, it is copyrighted by its owners, and you must purchase a license to use it.

Unlike a program costing ten times as much, you have a chance to try the program before you commit yourself to purchasing the license. This 'try before you buy' concept is termed Shareware.

We are granting you a limited-time trial use license to evaluate this program to determine if it meets your needs. If, after 30 days, you wish to continue using this program you must purchase a full license for continued use. If you continue using this program beyond the 30 day trial use license we have granted, you are doing so without a license. This is illegal.

See Appendix 3 of the User Guide for our license agreement.

Purchasing a full license is termed 'Registering the program'. Registration brings many benefits over and above the right to continue using the program.

See Appendix 4 of the User Guide for the benefits of registration.

## **REGISTRATION: PRICES AND PROCEDURES**

From the Help menu, choose Register. The Registration dialog box allows you to see our prices, and allows you to print a pro-forma invoice / order form.

The basic price is US\$42 or STG£27.56. To this must be added postage (varies) & (for E.U. customers) VAT. Credit card (Visa / Mastercard) orders are accepted.

U.S. & Australian customers can order through local agents.

If you are a CompuServe member, you can order online. GO SWREG, then follow the instructions, quoting ID# 1927.

The benefits of registration are described in Appendix 4 of the User Guide, and in the online help.

## **INSTALLATION & DE-INSTALLATION**

See section 2.1 of the User Guide.

## **GETTING STARTED**

After starting TreeChart, pressing F1 will present Help on what to do with that intimidating blank window. Section 2.3 of the User Guide and section 1.4 of the Tutorial both describe the various other ways of getting online help.

We recommend that you prepare your first chart by working through the tutorial.

## **VENDORS**

If you intend charging for providing copies of TreeChart, the file VENDOR.DOC describes our distribution license terms. If this file is missing, please contact me:

Steve Kearon  
FineLine Software  
Newtown, Kinvara, Co.Galway  
Republic of Ireland

tel/fax: +353 091 37560  
CompuServe: 70624,462  
E-mail: fineline@iol.ie

## What's New for version 2 ?

Changes are described by topic; and users are assumed to be familiar with TreeChart 1.10.

### Important Information - File Formats

The TreeChart 2.00 file format is **different** from the TreeChart 1.10 file format.

#### Opening 1.10 files in version 2.00

Registered users can open v1.10 files *almost* without being aware of this issue (the format is automatically converted, and any new data is given default values). If you then Save over the old file, you get prompted for confirmation. This also affects Template Files, though again conversion is automatic. Templates should, however, be upgraded to take advantage of the new features.

The automatic handling of old file formats is **not supported** for unregistered users. If an unregistered user tries to open a TreeChart 1.10 file, the program will simply report that this function is available only to registered users.

Aside from fixing a few (relatively obscure) line-routing faults, 1.10 charts will look identical under 1.20 except:

- Positioning of Assistants. Assistants positioned to the left of a Manager will be positioned to the right. See below for more details.
- A fault has been fixed in the interpretation of vertically-centered text. If you had text vertically centered, and some top and/or bottom aligned, the centered text was incorrectly positioned. Vertically centered text is now in the center of the box (assuming top & bottom margins are the same). If your chart looks significantly different, its probably because you had centered text plus either top or bottom aligned text. To give you the same effect as v1.10, you should move the centered text to the top or bottom (the one you're not using).
- Versions before 2.00 were unable to tightly pack subordinate sub-trees. Version 2.00 has more advanced box positioning logic. An option has been included for users to select the old style of positioning if they feel the need. This is a Layout Spacing option, and defaults to **off** (tight packing). If you want boxes to be positioned the old way, you'll need to select the **Prevent Subordinate Sub-trees from Overlapping** checkbox in the Spacing dialog for each Layout.

Related to this is the use of Spacing margins. In previous versions, if subordinates were placed across, the **Vertical Distance between Subordinates** was ignored. Now its used to determine how tightly sub-trees can be packed. If you think subordinates could be closer, you probably need to adjust this distance. Something near zero would be best.

The same thing happens for subordinates placed down. Here the **Horizontal Distance between Subordinates** was unused, and may need adjusting.

See below for more information on the improved box positioning.

### Significant Faults Fixed

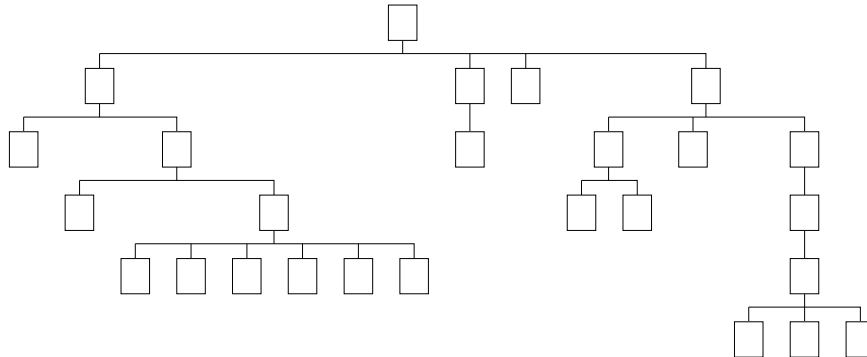
- A very nasty error which causes charts to be corrupted when saved has been corrected. In versions before 2.00, if you Focused on a box, then inserted a new box to the right of or below the bottom-rightmost visible box, internal data structures would be corrupted. Though the program doesn't crash (surprisingly!), the chart is irretrievably lost after this happens. Upgrade to v2.00 now.

- Version 2.00 supports plotters. Not exactly a fault (unless you tried outputting to a plotter).

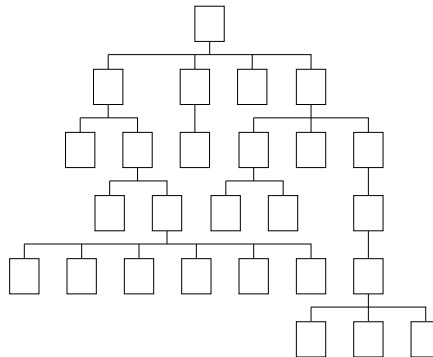
## New Features

### Improved packing when positioning subordinates

As mentioned above, the technique used for box positioning is now significantly improved. Previous versions regarded subordinate sub-trees as rectangles for positioning purposes, and resulted in charts like this:



The new version analyses the shape of subordinate sub-trees, and will tuck sub-trees under or into one another. For example (yes, this really is the same chart):



See the "file format change" notes above for more information on this.

### Automatically calculated fields

Both boxes & border now have a number of pre-defined fields that are automatically calculated. You can show / position / format them in the Edit Layout & Edit Border Layout dialogs, just like any other field. User defined fields with the same names don't confuse the program.

Most calculated fields can be shown in a number of different formats. You can change formats by choosing the Options button in the Edit Layout or Edit Border Layout dialogs. The format depends on the Layout. One of the options listed is "(default)". This means that the format used is as selected in the Preferences dialog. Note that this default format is per-program, and is **not** saved with an individual chart.

*Box Fields:*

number	box number; 1..N; top-left is 1
relative number	= last number in outline number (useful for numbered lists)
outline number	eg 1.2.3.1
level	level in the chart

Automatically calculated box fields reflect the entire chart: if you do outlining, these fields don't change.

*Border Fields:*

Date/Time  
File Name    full pathname (uses title if not yet saved)  
File Title    = chart window title

## Multiple Text Fields on the same line

TreeChart 1.10 limited you to placing one Text Field on each line. The new version permits you to place any number of Fields on each line. The Edit Layout and Edit Border Layout dialogs now have **Left** (<) and **Right** (>) buttons which work similar to the existing **Up & Down** buttons. The **Up & Down** buttons now work slightly differently: if the Field was on a line of its own, it moves to the next existing line (removing its old line); if it was not alone, it creates a new line. In other words, Up & Down create new lines or merge existing lines as you make a change.

Now a *group* of Fields are left-, center- or right aligned within the box. The **Left & Right** buttons affect Field order within a line.

See the next section for adjusting the spacing between fields on the same line.

## New Text Field options

There's now an **Options** button in the Edit Layout & Edit Border Layout dialogs. Like the **Font** button, this applies to the currently selected Text Field. It shows a Text Field Options dialog. This enables you to:

- Adjust the spacing between fields on the same line
- Specify text to be shown before or after the box text (eg currency symbols/units)
- Select the display format of calculated fields
- Truncate a text field at N characters (dropping first or last characters)
- Specify a fixed width to a field, enabling tabulation

## Easier to change text styles

A **Text Styles** command has been added. This shows a dialog which allows you to make a series of changes to the text styles of any group of fields within any group of Layouts.

## New Chart Styles

Charts used to always go top-to-bottom. Now they can also go left-to-right or right-to-left. You can even mix'n'match. These new options are at the end of the Connections Styles list in the Edit Layout dialog.

The right-to-left style is great for knockout competitions. Now you can illustrate your company organisation *and* the important stuff like the inter-departmental darts championship.

## New Child Alignment Options

When aligning subordinates, you could choose to align on the top, center or bottom of the subordinates. Now you can also align on the top, center or bottom of the subordinate *sub-tree*. These new options are at the end of the Child Align list in the Edit Layout dialog.

## Assistants Both Left and Right of a Manager

Versions before 2.00 gave you no choice where Assistants were positioned. In the **Mark Boxes** dialog, the Assistants marker now has an associated marker (Place Left). Like all other markers, this is per-box so you can have some Assistants to the right & some to the left. F12 now always positions Assistants to the right (it used to vary). CTRL+F12 positions Assistants to the Left. As before, SHIFT+F12 changes an Assistant back into a regular subordinate.

## Co-Manager Links as Dotted Lines

Versions before 2.00 gave you no choice how Co-Manager links were drawn: they always used the same line styles as used for connecting to subordinates. In the **Mark Boxes** dialog, the three Co-Manager markers now have an associated marker (Co-Manager Links as Dotted Lines). Select this to have these lines as hairline dotted lines.

## Additional Selection Commands

You can now select all boxes that have subordinates, or all boxes that don't have subordinates. Due to the length of the Edit menu (& difficulty in coming up with characters to underline in the commands), these commands are available only as keyboard shortcuts: CTRL+1 and CTRL+2.

## Improved Printing / Page Setup

Various improvements have been made in this area.

The **Page Setup** dialog now offers a third Print Style: **Overlapped Poster**. This works just like Poster style, except that a 1/4" region is now printed *both* sides of a page break. This can make sticking pages together easier, and also overcomes a problem where some printers tell us the wrong printable region.

The **Chart Alignment** controls in this dialog allow you to choose where your chart is positioned within the 'available area'.

Minimum page margins are now handled better: if the margins you specify are smaller than the minimum margins for the selected printer, the minimum margins are used. Now, there is no way to clip the chart, headers or footers if you choose margins that are too small.

Font-picker dialogs now also list **scaleable** fonts in the current printer.

Plotters are now supported.

## Improved Template File Handling

When opening a text-format file (and using the selected Template), newly created boxes were inserted as a "Paste Left" of the top-left box. This was a bit restrictive when the Template contained boxes. Templates now record how you later want boxes to be inserted. When you save a Template containing boxes, the Current Box indicates the box relative to which insertion will later take place. You are prompted to confirm this, and to choose whether boxes will be inserted to the left, to the right or below this box.

## Improved Assignment of Initial Layout

When you insert a box, the Layout it initially uses is determined by the Default Layouts. This works fine in many circumstances, but other useful methods have also been identified. Version 2.00 offers you one of these other methods.

Apart from when you add the first box to the chart, Inserting a box is relative to the Current Box. You can now choose to have the new box use the same Layout as the Current Box. This option is selected in the Preferences dialog.

Pressing SHIFT as you insert causes the 'other' initial Layout assignment method to be used.

This applies only when inserting an individual boxes: pasting boxes or opening text files both work as before.