

VB/Tracer-Profiler (version 3.00)

Contents

[Overview](#)

[VB/Tracer-Profiler](#)

[Revision History](#)

[New Features](#)

[Installation](#)

[Technical Support](#)

[Registering 'VB/Tracer-Profiler'](#)

[License Agreement](#)

[Distribution Note](#)

[Acknowledgement](#)

@Blank

Purpose :

Declare Syntax :

Call Syntax :

Where :

Comments :

Examples :

See also :

Select this command box, if you want to add tracer-profiler to your application.

This list show all files founden in your VB .MAK file.
You can see the old size and the new size of each files.

This bar show the current progress in your VB .MAK file.

Distribution Note

When you create and distribute applications that use 'VB/Tracer-Profiler', you should install the file [VBTRCPRF.DLL](#) in the customer's Microsoft Windows `WINDOWS\SYSTEM` subdirectory. The setup kit included with Visual Basic provides tools that help you write setup programs that install your applications correctly.

You are not allowed to distribute 'VBTRCPRF.LIC' file with any application that you distribute.

Select the directory containing your application.

Select the disk containing your application.

Push on this button to read the selected traced file.

Select this command box, if you want to remove tracer-profiler to your application.

Revision History

See also : [New Features](#)

Version	Comments
3.00	Correction of a problem to find the main module.
2.03	Correction of a problem if the generated .-PF file is bigger than 32767 bytes.
2.02	Correction of a problem with an internal routine when checking a filename beginning with '..\.'
2.01	Correct a problem if the installation directory contains embedded period '.'
2.00	<i>no revision.</i>
1.14	Solve a little incompatibility with 'VB/Error Hander'. Correct the library definition in file VBPRFTRC.BAS
1.07	<i>no revision.</i>
1.00	Initial release of the 'VB/Tracer-Profilier'.

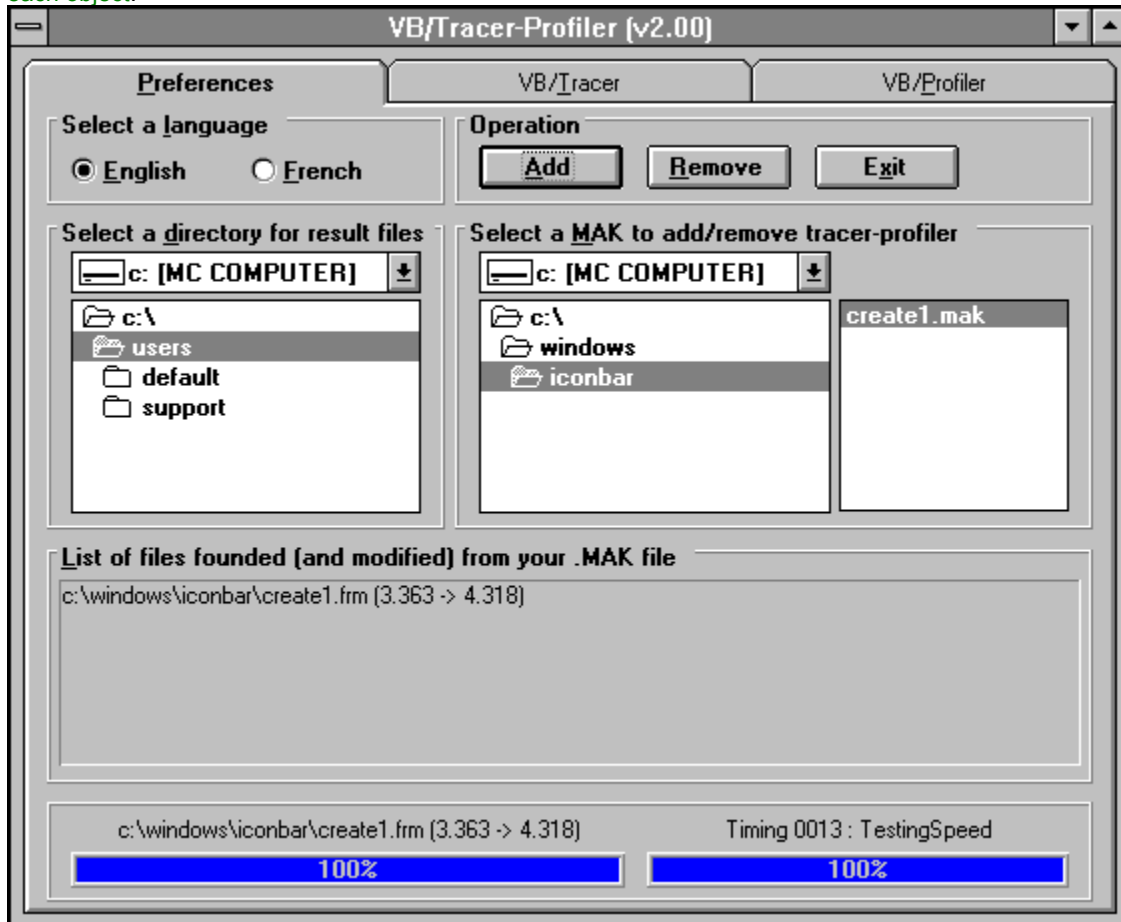
New Features

See also : [Revision History](#)

Version	Comments
3.00	<i>no new features.</i>
2.03	<i>no new features.</i>
2.02	Add some new internal routines.
2.01	<i>no new features.</i>
2.00	Add the selection of a target disk/directory to store the traced/profiled file.
1.14	<i>no new features.</i>
1.07	Minimize the space required for the traced/profiled file.
1.00	Initial release of the 'VB/Tracer-Profiler'.

VB/Tracer-Profiler

'VB/Tracer-Profiler' is an easy to use program to perform the adding/removing of traced/profiled informations to all source files in a VB .MAK file. The traced/profiled informations give you the opportuneness to see the path of all routines in your application and the speed of each routine. Push on hot-spots (hand cursor) to see the meaning of each object.



Select this command box, if you want to exit of 'VB/Tracer-Profiler'.

Installation

Demonstration version :

The files VBTRCPRF.DLL and VBTRCPRF.HLP should be copied in your WINDOWS directory.

Registered version :

The files VBTRCPRF.DLL, VBTRCPRF.HLP should be copied in your WINDOWS\SYSTEM directory.
The file VBTRCPRF.LIC should be copied in your WINDOWS directory.

Distribution note:

You don't need to distribute the information for the tracer-profiler. The information is for your usage to optimize your work.

You are not allowed to distribute 'VBTRCPRF.LIC' file with any application that you distribute.

Select the file containing your application.

Select this option box, if you want to have the English Language.

Select the traced file containing the informations.

Push on the title to sort the informations by 'Average Time'.

Select this check to see the information with a null total calls.

Select the profiled file containing the informations.

Select the directory which will contain the traced/profiled files.

Select the disk which will contain the traced/profiled files.

Push on the title to sort the informations by 'Minimum Time'.

Push on the title to sort the informations by 'Total Time'.

Push on the title to sort the informations by 'Total Calls'.

Push on the title to sort the informations by 'Routine'.

Push on the title to sort the informations by 'Module'.

Select this option to see the information in a descending order.

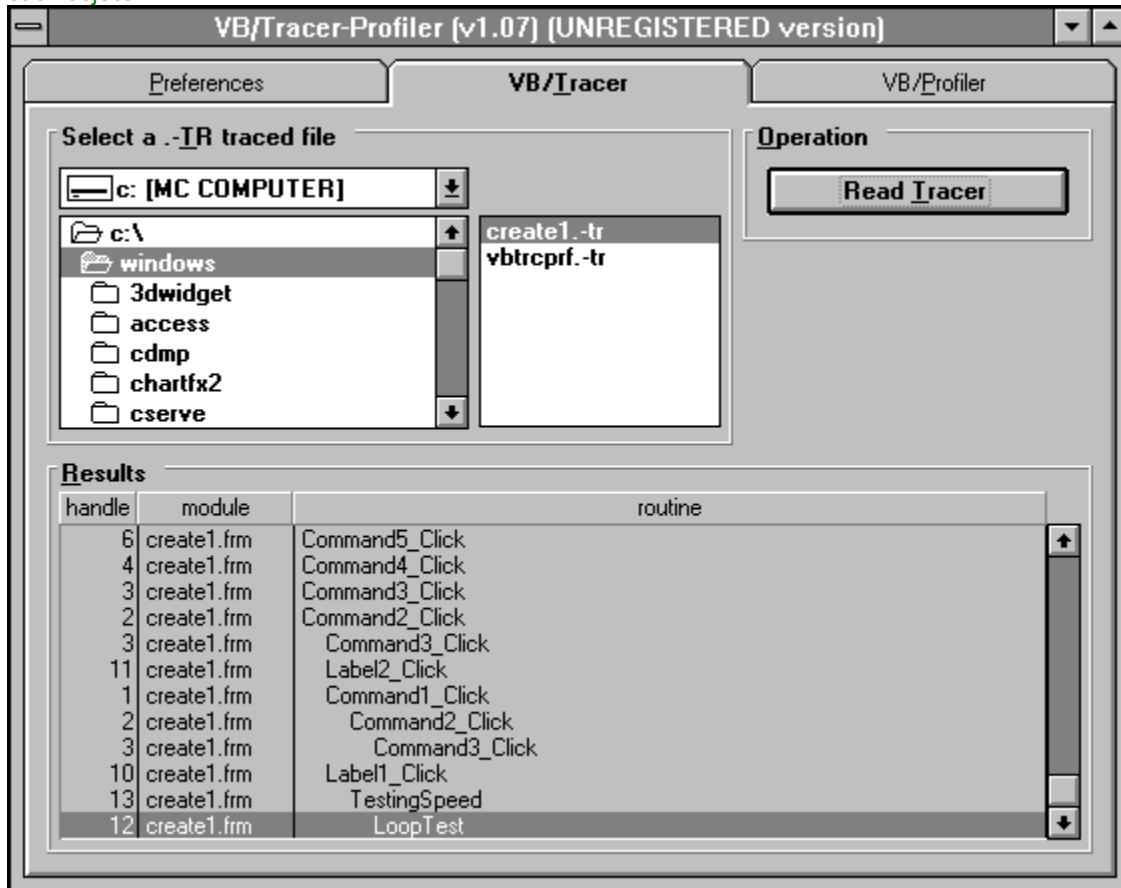
Select this option to see the information in an ascending order.

Select the directory containing the profiled file.

This bar show the current progress in each file in your VB .MAK file.

VB/Tracer

'VB/Tracer' read all informations stored in a traced file (*.TR). Push on hot-spots (hand cursor) to see the meaning of each object.



Select the directory containing the traced file.

Select this tabbed dialog to change some parameters.

Select this option box, if you want to have the French Language.

Push on the title to sort the informations by 'Maximum Time'.

This list show all routines informations in the selected traced file.

handle is the routine number gived when you've added the tracer-profiler.

module is the name of each traced module.

routine is the name of each traced routine.

Push on the title to sort the informations by 'Handle'.

Technical Support

Only registered users can receive support and update.

To receive support, you must specify your registration ID.

However, any report on any problem are the welcome.

The following information may be of help to you in streamlining your efforts to resolve any technical problems you may have with 'VB/Tracer-Profiler' program.

GPF?

If you are getting a GPF (General Protection Fault), write down the information that is displayed when the error occurs. Also, make a note of what your code was doing (in general terms.)

ISOLATE IT

Try to isolate the cause of the error. If at all possible, step through your code with F8 and F9. Try to find the one line of code that is causing the error.

SCALE IT DOWN

If at all possible, try to reproduce the problem in a small test program that you can send in. Send your test on CompuServe.

CompuServe Mail:

Name : Michaël RENARD

CIS : 100042,3646

I'm on CompuServe one time a day (after 19 o'clock European Time).

License Agreement

The 'VB/Tracer-Profiler' program and its associated DLL is not public domain software or free software.

The 'VB/Tracer-Profiler' program and its associated DLL is copyrighted, and all rights are reserved by its author: Michaël Renard.

You are licensed to use this software on a restricted number of computers. You may copy the software to facilitate your use of it on as many computers as there are licensed users specified in the 'VB/Tracer-Profiler' license file '**VBTRCPRF.LIC**'. Making copies for any other purpose violates international copyright laws.

*You are not allowed to distribute '**VBTRCPRF.LIC**' file with any application that you distribute.*

Disclaimer:

This software is sold AS IS without warranty of any kind, either expressed or implied, including but not limited to the implied warranties of merchantability and fitness for a particular purpose. The authors assume no liability for any alleged or actual damages arising from the use of this software. (Some states do not allow the exclusion of implied warranties, so the exclusion may not apply to you.)

Your use of this product indicates that you have read and agreed to these terms.

Acknowledgement

This help has been written by using [ForeHelp](#) v1.04 from [ForeFront, Inc.](#)

Overview

'VB/Tracer-Profiler' is a program to add/remove automatically the tracer-profiler's information in a VB .MAK file.

'VB/Tracer-Profiler' have an another approach to minimize the use of memory. It use an external file did contains all routines founded in the source file. Only a basic module will be added to your application (not a .FRM module).

'VB/Tracer-Profiler' creates 2 files for each project. These files are stored in the selected directory.

Don't forget that the traced/profiled information is only use to perform some path application and speed measurement. When you want to distribute your final application, remove all traced/profiled information in your project. These informations are not usable for the finale release of an application.

I hope that 'VB/Tracer-Profiler' will be a great advantage for you and for your application.

'VB/Tracer-Profiler' works ONLY with modules SAVED IN TEXT MODE.

Registering 'VB/Tracer-Profiler'

The easiest way to Register 'VB/Tracer-Profiler' is through CompuServe's SWREG forum.

- 1) [GO SWREG](#)
- 2) Choose Register Shareware.
- 3.1) 'VB/Tracer-Profiler' [SWREG ID](#) is : **#5295** (**ONLY** if you're a **REGISTERED** user of 'TIME TO WIN' #4045).
- 3.2) 'VB/Tracer-Profiler' [SWREG ID](#) is : **#5294** (only if you're **NOT** a **REGISTERED** user of 'TIME TO WIN' #4045).

As soon as I receive notification of your registration (usually 1 - 3 days) I will send you out via e-Mail the latest version and a license file for one site (only if latest version is available (not currently in test)) if not you receive the license file for one site.

You also qualify to receive new versions of 'VB/Tracer-Profiler' during one year.

The price for 'VB/Tracer-Profiler' is fixed at \$25.00 (**ONLY** if you're a **REGISTERED** user of 'TIME TO WIN' #4045).
The price for 'VB/Tracer-Profiler' is fixed at \$34.00 (only if you're **NOT** a **REGISTERED** user of 'TIME TO WIN' #4045).

If you're **NOT** a **REGISTERED** user of 'TIME TO WIN' and you register 'VB/Tracer-Profiler' at the low price (\$25.00), I can't send you the product and I wait until that you register 'TIME TO WIN'.

This price is much a contribution to my works that a payment. When you register 'VB/Tracer-Profiler', you help me to develop better products and others products.

'VB/Tracer-Profiler' is written in Visual Basic 3.0 and its associated DLL in C and compiled using Visual C++ 1.51. The DLL code has been optimized for 80386 use with the 'maximize speed' option.

Others products :

- | | |
|--|---|
| 1) 'TIME TO WIN' VB 3.0). | SWREG #4045 (more over 570 routines for |
| 2) 'TIME TO WIN Light' VB 3.0). | SWREG #5808 (more over 360 routines for |
| 3) 'VB/Error Handler' | SWREG #4380. |
| 4) 'Bundle of TIME TO WIN, VB/Error Handler, VB/Tracer-Profiler' | SWREG #5499 |

Push on this button to read the selected profiled file.

Select the disk containing the traced file.

VB/Profiler

'VB/Profiler' read all informations stored in a profiled file (*.PF). Push on hot-spots (hand cursor) to see the meaning of each object.

The screenshot shows the VB/Tracer-Profiler (v1.07) [UNREGISTERED version] interface. The window is divided into three main sections: Preferences, VB/Tracer, and VB/Profiler. The VB/Profiler section is active and contains a file selection area, operation controls, and a results table.

Select a .PF profiled file

c: [MC COMPUTER]

c:\

- windows
- 3dwidget
- access
- cdmp
- chartfx2
- cserve

create1.-pf
vbtrcprf.-pf

Operation

Read Profiler

Display null calls

Sort order

Ascending

Descending

Results

handle	module	routine	calls	tot.time	min.time	max.time	avg.time
8	create1.frm	Form_Load	1	2	2	2	2
11	create1.frm	Label2_Click	1	2	2	2	2
6	create1.frm	Command5_Click	2	2	1	1	1
3	create1.frm	Command3_Click	6	5	0	1	0
2	create1.frm	Command2_Click	4	13	2	4	3
1	create1.frm	Command1_Click	2	13	6	7	6
4	create1.frm	Command4_Click	2	45	22	23	22
12	create1.frm	LoopTest	32000	16870	0	4	0
13	create1.frm	TestingSpeed	1	55423	55423	55423	55423
10	create1.frm	Label1_Click	1	55443	55443	55443	55443

Select the disk containing the profiled file.

