

Setup Dialog Box

Graph Setup

Graph Type
 Hex Graph

Line Points
Hex line: 1
Graph: 1
Heavy: 2

Hex Options
Side Length: 0.500 In.
Side to side diameter: 0.866 In.
Corner to corner dia.: 1.000 In.

Graph Options
Heavy line every: 5 Lns
Length Of Box Side: 0.200 In.
 Include heavy lines
 Clean Border

Ok

Click on the part of the Setup Dialog that you wish to find out more about.

Hex Button

Click this button to make hex paper the current graph type.

Graph Button

Click this button to make regular square graph paper the current graph type.

Hex Line Point

The size of the lines used to draw the hexagons, in points. You may choose 1 to 5 points.

Box Line Point

The size of the lines used to draw the regular graph lines, in points. You may choose 1 to 5 points.

Heavy Line Point

The size of the lines used to draw the heavy lines, in points. You may choose 1 to 5 points.

Side Length

The length of the hexagon sides, in inches. You may change this value to change the size of the hexagons. Valid range: 0.1 - 7.0

Side Diameter

The side to side diameter of the hexagons, in inches. You may change this value to change the size of the hexagons. Valid range: 0.173 - 12.12

Corner Diameter

The corner to corner diameter of the hexagons, in inches. You may change this value to change the size of the hexagons. Valid range: 0.2 - 14.00

Heavy Line Every n Lines

Every n lines is drawn bolder. You may change this value. Valid range: 1 - 60.

Box Length

Length of each square in the graph paper, in inches. Valid range: 0.1 - 7

Include Heavy Lines

Check this box to include the heavy lines every n lines.

Clean Border

Check this box if you don't want the graph lines to run off the edge of the page. When this box is checked, the graph paper will be drawn to the last heavy line that will fit on the page, or the last line if the Include Heavy Lines box is unchecked.

Ok Button

Hit the "Ok" button when you are done changing the graph parameters.

Registering Graph Paper Designer v1.0

Graph Paper Designer is shareware. This means that you must register it if you intend to continue using it after the 21 day trial period is over. Registering shareware is A Good Idea for many reasons. It encourages shareware authors to continue to produce affordable, quality software, and to continue refining and supporting the software that they've already written, like this program.

When you register, you will get the latest version of Graph Paper Designer, with no nag screens. You will also be notified of future updates, and be given the opportunity to upgrade for a reduced rate when program updates become available. Registration also entitles you to free technical support, by mail or e-mail.

You may freely copy and distribute this version of Graph Paper Designer, as long as you include all of the files unmodified. You may not charge for the distribution of this program, other than a reasonable fee to cover cost of media not to exceed \$5.00.

To register this program, use the [Order Form](#) here, or print the file **order.frm** distributed with the program. Send this form with payment to:

Ted A. Bruton
P.O. Box 931
Davis, CA 95617-0931

Questions or comments:
AOL: TABruton@aol.com
CompuServe: 75253.3115@compuserve.com

Or, as a last resort:
(916) 757-2433

Graph Paper Designer 1.0 -- Order Form

Name: _____

Company: _____

City: _____ State: _____ Zip: _____

Country: _____

Phone: _____

e-mail: _____

Disk Type (check one): 3.5" diskette 5.25" diskette

Number of copies:

_____ Copies @ \$15.00 per copy = \$_____

How did you receive your copy of Graph Paper Designer?

CompuServe AOL Prodigy Internet _____
 BBS _____ Catalog _____ Other _____

Please make checks or money orders payable to Ted A. Bruton, and mail with order form to:

Ted A. Bruton
P.O. Box 931
Davis, CA 95617-0931

Payments must be in US dollars drawn on a US bank, or you can send international postal money orders in US dollars.

Graph Paper Designer v1.0

Copyright © 1995, Ted A. Bruton. All rights reserved.

Graph Paper Designer 1.0 is a shareware graph paper printing program for Windows. You can produce both regular graph paper and hexagon paper with this program. The program also allows you to change the size of the hexagons or graph lines, as well as several other options.

The client area of the Graph Paper Designer window displays a graph paper example, based on the current parameters specified by the user. To change the type of graph paper and other options, select 'Graph Setup' under the 'File' menu. To print your graph paper, select 'Print' under the 'File' menu.

[Overview](#)

[Graph Setup](#)

[Printing](#)

[Registration](#)

[Order Form](#)

Overview

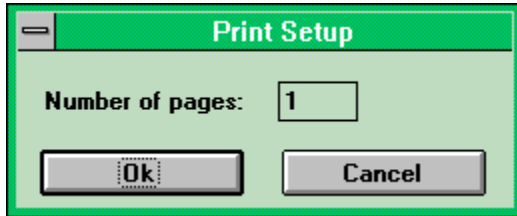
I wrote Graph Paper Designer for one specific reason: hex paper is bloody hard to find! I don't know how many actual uses there are for it, but I thought that game stores at least would have it (assuming that someone actually makes it -- a safe assumption since I could swear I've seen it before!) So if you're a gamer, enjoy. You can make the hexes any size you want.

If you're not a gamer, you can ignore the hex stuff. Unless you have another use for it, of course. As a consumer of large quantities of the regular sort of graph paper, I decided to add the capability of producing it to the program as well. Hopefully I've provided enough configuration options to make it relatively useful. If there are any suggestions, I'd be happy to consider them. Other capabilities to be implemented in the future are:

- Polar coordinate graph paper
- Logarithmic scale graph paper
- Accounting paper
- Metric measuring, as well as English
- User-defined tabular grids, for the purpose of printing tables that can be filled out
- Color printing support

If there are any other methods of putting lines on paper, let me know and I'll add it to the list.

Printing



Click on the part of the Print Dialog that you wish to find out more about.

Number of Pages

Enter the number of pages of graph paper you wish to print in this box.

Ok Button

Click on this button to start printing.

Cancel Button

Click on this button to cancel printing.

