

# MicroPlayerCD™ version 1.10

Copyright (c) 1993-94 by Daniel Thomas. All Rights Reserved.

About the...



## Index

Quick Start  
Introduction  
Requirements  
Setting Up Your Hardware/Drivers

## Features

Main Window  
Main Options Dialog  
CD Info Dialog  
List Disc Catalog Dialog  
Go To Track Dialog  
Layout Dialog

Troubleshooting  
About Shareware  
Revision History/Miscellaneous  
About the Association of Shareware Professionals

## Quick Start

If you're eager to get MicroPlayerCD™ up and running, then this is the section for you!

### 1. Copy all the program files into one subdirectory.

Since you're looking at this help file, we can assume you've already done this.

### 2. Run MicroPlayerCD.


Since you're looking at this help file, we can assume you've already done this. (Easy so far, isn't it?) Is MicroPlayerCD's Main Window too large? See [Fully Resizable Window](#).

### 3. Position MicroPlayerCD on the screen.

You can drag MicroPlayerCD around your desktop by pointing at any part of the window that is **not** a button, and dragging the window (hold down the left mouse button). MicroPlayerCD will remember where you place it.

### 4. Open the Drive Door.

Depending on the type of CD ROM and driver you have, you may be able to do this from

MicroPlayerCD. Try clicking on the  button. If the drive door opens, good! Clicking it again closes the drive door.

If this button doesn't work, use the manual method. Once you actually have a CD in the drive, try this button again. Some CD ROM's won't allow this to work until you actually have a CD in the Drive.

### 5. Insert an audio CD.

Pretty self-explanatory.

### 6. Close the Drive Door.

The reverse of step 4.

### 7. Start Playing.

Click on the  button.

### 8. Where to go from here.

Something not working? Try the [Troubleshooting](#) section.

Click on all the buttons to see what they do. Experiment with the options. HAVE FUN!

Want to stop MicroPlayerCD? Double-click on any non-button portion of the window, or use the Exit button on the [Main Options](#) dialog. Note that stopping MicroPlayerCD will not stop a CD, if it is currently playing (this is a feature!)

Check out the [Features](#) section.

If you need more information, check out the rest of this help file.

## Introduction

MicroPlayerCD™ version 1.10 is a full-featured shareware Windows program. Its purpose in life is to help you play audio CDs using your computer's CD-ROM, and optionally use a sound board. Be sure to read the Requirements section.

There are many different CD "control panels" available. I've tried just about all of them. But none of them had all the features I wanted. So I decided to write what is my vision of a perfect control panel program. MicroPlayerCD is the result. I hope you like it.

Please provide me with your feedback. If something doesn't work like you think it ought to, if there are other features you wish it had, or (dare I say it) you should find a bug, please let me know. Drop me a line through one of the on-line services. Write me via US-Mail. Leave a message on my answering machine. PLEASE! let me know so I can make this a better product (if that's possible).

You can contact me on-line in the following locations:

Compuserve:	72301,2164
Prodigy:	CWRF01A
America On Line:	72301,2164@cis
Internet:	72301,2164@compuserve.com

US Mail:

Dan Thomas  
2301 N. Huron Circle  
Placentia, CA 92670  
(714) 524-5625

Compuserve users can register on-line. GO SWREG, Reference ID number 2081.

Phone: (714) 524-5625

## Requirements

Microsoft Windows 3.1 or higher, and all the equipment that implies.

Mouse.

CD-ROM drive.

Optionally a Sound Board.

Additional information is available in the [Setting Up Your Hardware/Drivers](#) section.

## Setting Up Your Hardware/Drivers (Troubleshooting)

In order for MicroPlayerCD™ to function properly, your hardware and software must be working correctly. If you have problems using MicroPlayerCD, check out the following section:

NOTE: If your CD quits playing sometimes when you do certain things in Windows, click [here](#).

### 1. **Make sure you can access your CD ROM drive from Windows.**

If you can't access your CD ROM from Windows, then MicroPlayerCD will not be able to access it either.

If you're not sure, open File Manager and see if there is a button for the drive letter assigned to your CD ROM drive. If there is, then you're in good shape.

### 2. **Make sure you have the MCI CD Audio driver loaded.**

In Control Panel, double-click on the Drivers applet. If you don't see an entry that looks like this:

[MCI] CD Audio

then you need to add one. Click on the Add button and pick the driver. Windows may require you to insert a Windows disk. When you're done, you will have the CD Audio driver loaded (although you may need to re-start Windows to do this).

### 3. **If you are not using a Sound Card**, MicroPlayerCD will still work, but you will need to use headphones or other external speakers. MicroPlayerCD's Volume control will not function. However, all other features should work just fine.

## The rest is for sound card owners only:

### 4. **Is your CD ROM hooked up to your sound board?**

There are many ways to do this depending on what type of CD ROM and sound board you have.

#### **A. Externally.**

You can run a cable from the Headphones jack on your CD ROM to the Audio Input jack of your sound board.

Some CD ROM's have a set of audio output plugs on the adapter card. You can run a cable from these to the sound card also.

#### **B. Internally.**

Many CD ROM's and sound boards have connectors on the cards that allows you to run a cable from the CD ROM to the Sound Board. This would be happening *inside* your computer.

You will probably need to call your sound board manufacturer and order the cable.

**5. Do you have your sound card's Auxiliary Sound driver loaded?**

This driver is used to control the volume of the sound card. To see if you have this loaded, run Control Panel and double-click on the Drivers applet. Make sure there is an entry for AUX or Auxiliary or something similar.

If there isn't, make sure you've installed the software that came with your sound board. If you can't find a driver for this, then you will not be able to control the volume from MicroPlayerCD.

## Features

Move The Window

Stay On Top

Fully Resizable Window

Disc Catalog

Go To Track

Show Disc And Track Name

Auto-Restart

Stop MicroPlayerCD™



## Move The Window

You can drag MicroPlayerCD™ around your desktop by pointing at any part of the window that is **not** a button, and dragging the window (hold down the left mouse button). MicroPlayerCD will remember where you place it, for the next time you run it.

Use this feature in conjunction with the Stay On Top, Resizable Window and Show Disc And Track Name to get the best use out of MicroPlayerCD™.

## Stay On Top


MicroPlayerCD™ has an option that allows it to "float" on top of other windows. MicroPlayerCD comes configured to do this automatically, but you can change it from the Main Options dialog.

Use this feature in conjunction with the Resizable Window and Show Disc And Track Name to get the best use out of MicroPlayerCD.

## Fully Resizable Window

MicroPlayerCD™'s Main Window (the control panel) can be re-sized. You can also pick and choose which controls you want to see.

**To re-size the main window, follow these simple steps:**

1. Click on the Main Options button . This brings up the Main Options dialog.
2. Drag the Dialog off of the main window. To do this, point at the dialog's title bar, hold down the left mouse button, and drag the dialog.
3. Use the "Window Size" scroll bar to change the size of the main window.  
You can watch the main window change size as you change the scroll bar.
4. Accept the size change by clicking on OK, or go back to the way it was by clicking on Cancel.

**To pick and chose which controls you wish to see on the main window, see Layout.**

## Disc Catalog

### What is a Disc Catalog?

It is a database that keeps track of each CD you have. It includes Title, Artist, and Track Titles.


Each time you insert a CD that has already been entered into the database, MicroPlayerCD™ will look up the name of the disc, and other pertinent information. If you've selected the [Show Disc And Track Name](#) option, the name of the disc and the title of the track will be displayed in MicroPlayerCD's [Main Window](#).

### How Does It Work?

MicroPlayerCD generates a unique number for each CD. It bases this number on the total length of the CD, and the number of tracks (songs) on the CD.

Using this number as a key, MicroPlayerCD stores the information you enter about each CD, ready to be recalled at a moments notice.

### How Do I Enter Disc Information?

1. Click on the Main Options button . This brings up the [Main Options](#) dialog.
2. Click on the Disc Info button. This brings up the [CD Info](#) dialog.
3. Fill out the fields in the [CD Info](#) dialog, then click on OK.
4. You should now see the disc name and track title on the main window. If you don't, make sure you have the [Show Disc And Track Name](#) options set.

### Can I See What CDs I've Already Entered?


Yes. From the [Main Options](#) dialog, click on the Catalog button.

### See Also

[Go To Track](#)

[Show Disc And Track Name](#)

## Go To Track

When you have a CD in the CD ROM drive, you can click on the Go To button  on the Main Window. This will bring up the Go To Track dialog. Select a track and click OK, or simply double-click on a track. Your CD will begin playing that song.

### See Also

[Disc Catalog](#)

[Show Disc And Track Name](#)

## Show Disc And Track Name

MicroPlayerCD™ has an option that allows it to display the name of the CD and the title of the Track being played on the Main Window. MicroPlayerCD comes configured to display this information, but you can turn it off from the Layout dialog.

Use this feature in conjunction with the Disc Catalog.

## Auto-Restart

Playing audio CDs using your computer's CD ROM can be a lot of fun. But there are times when it can be troublesome also.

Many actions you perform on your computer can cause the CD to quit playing. Most of these involve the computer trying to find out what files are on the CD. It looks at the CD and sees no files, so the computer just goes along without complaining (usually). Unfortunately, when it does this it stops the CD from playing!

MicroPlayerCD™ has a unique feature called Auto-Restart. This feature attempts to determine when this has happened, and automatically re-start the CD playing where it left off.

Most of the time this feature works great, and you'll want to leave it activated. But if it causes you any problems, you can turn it off from the Main Options dialog.

## Stop MicroPlayerCD™

Want to stop MicroPlayerCD™? Double-click on any non-button portion of the Main Window, or use the Exit button on the Main Options dialog.

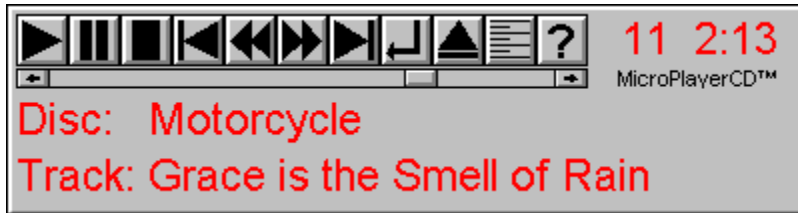
I should point out that if a CD is currently playing, it will continue playing. That way, you dont have to have MicroPlayerCD running while a CD is playing. If you want to stop the CD, click on the Stop button





## Main Window

Point at something on the Main Window that you'd like help on, then click the left mouse button:



If your window does not look like the one above, then see the [Layout](#) dialog section.

## **Play Button**

Click the Play button to start playing a CD.

## **Pause Button**

Click the Pause button to temporarily suspend playing a song. Click it again to pick up where you left off.

## Stop Button

Click the Stop button to stop playing the current CD, and return to track 1.

## **Previous Track Button**

Click on the Previous Track button to either start this song over, or go to the previous song.

- If more than 5 seconds of the current song have played, then the current song will start over.
- If less than 5 seconds of the current song have played, then the previous song will start playing.

## Fast-Reverse Button

Click on the Fast-Reverse button to move back 30 seconds on the CD. The actual amount of time depends on the **Scan Advance Seconds** setting on the Main Options dialog.

## Fast-Forward Button

Click on the Fast-Forward button to move forward 30 seconds on the CD. The actual amount of time depends on the **Scan Advance Seconds** setting on the Main Options dialog.

## **Next Track Button**

Click on the Next Track button to advance to the next song on the CD.



## Go To Track Button

When you have a CD in the CD ROM drive, you can click on the Go To Track button. This will bring up the Go To Track dialog. Select a track and click OK, or simply double-click on a track. Your CD will begin playing that song.

## Eject Button

Click on this button to open the CD ROMs drive door, or close it.

Depending on the type of CD ROM and driver you have, this button may not work. Some CD ROM drives do not support this option, or only support it to eject the disc. Also, some CD ROM's won't allow this to work until you actually have a CD in the Drive.

Experiment to see what works and doesnt work with *your* CD ROM drive.

## Main Options Button

Click this button to open up the Main Options dialog. You can also open the Main Options dialog by *Right*-clicking on any non-button portion of the main window.

## **Help Button**

Click this button to bring up the On-Line Help (you're looking at it!).

## **Status Window**

When a disc is playing, this window shows what Track number is playing, and how much time has elapsed for this track.

This window will also show the status of the drive, when you are not playing a CD.

## Volume Scroll Bar

This scroll bar controls the volume of the CD currently being played. Please note that some CD drives do not support a volume control. See the [Troubleshooting](#) section for more information.


Also, the maximum volume that this scroll bar will let you obtain may be limited by your sound boards initial settings. For instance, the Sound Blaster Pro has an application called SB16 Mixer that sets the maximum volume the board will play. You may want to adjust this volume (and save the settings) so that MicroPlayerCD™ can allow you to get higher volumes.

## Disc and Track Name

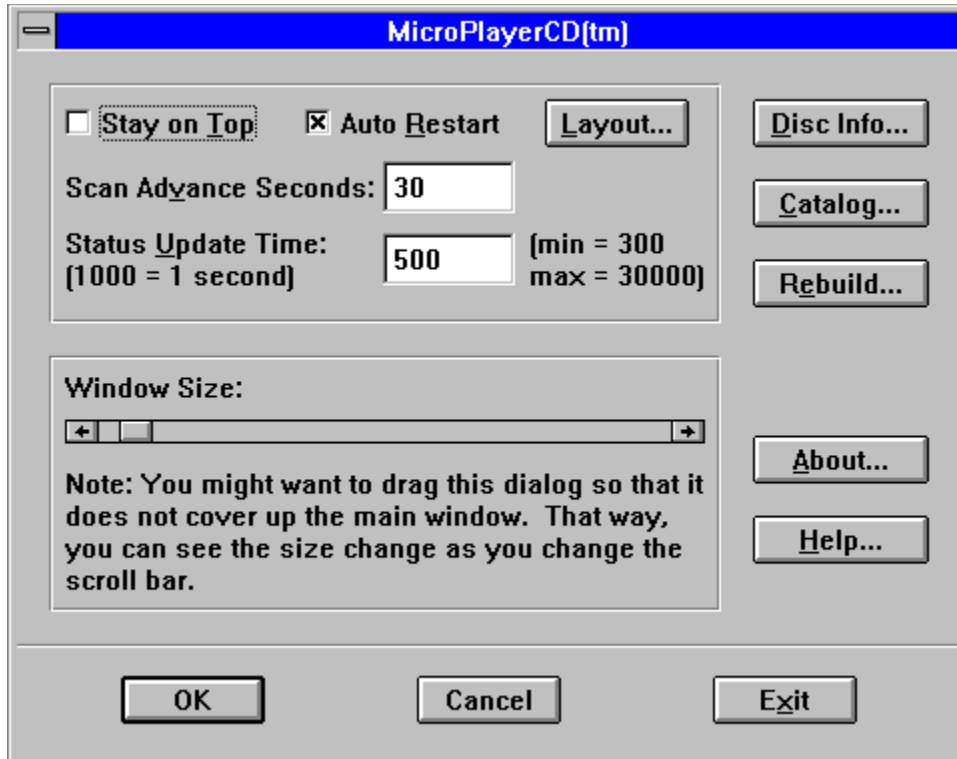
MicroPlayerCD™ has an option that allows it to display the name of the CD and the title of the Track being played. MicroPlayerCD comes configured to display this information, but you can turn it off from the Layout dialog.

Use this feature in conjunction with the Disc Catalog.

## Main Options Dialog

This is the Main Options dialog. You get to this dialog by clicking the  button on the Main Window, or by *right*-clicking on any non-button portion of the main window.

Point at something on the Main Options dialog that you'd like help on, then click the left mouse button:





## **Stay On Top Option**

If this option is selected, MicroPlayerCD™ will float on top of your other windows.

## Layout Button

Click on this button to go to the [Layout](#) dialog.

## **Scan Advance Seconds**

When you use either the Fast-Forward button or the Fast-Reverse button, MicroPlayerCD™ uses the value in this box to determine how much time it should advance or retreat. This time is in seconds, and the default is 30 seconds.

## **Status Update Time**

This time controls how often MicroPlayerCD™ updates the display. On some slower systems, you may want to increase this value.

The time is in milliseconds, so 500 = half a second, 1000 = 1 second, 3000 = 3 seconds, etc.

The default is 500 (half a second).

## Window Size Scroll Bar

My favorite feature of MicroPlayerCD™ (in fact, the main reason I wrote it) is that the Main Window can be almost any size you want (including very small). Use this scroll bar to control the main windows size.

When you use this feature along with the Stay On Top option, MicroPlayerCD can be available instantly without getting in the way.

As you change this scroll bar, the main window resizes. But since the Main Options dialog covers the main window, you cant see what youre doing. For this reason I recommend dragging the Main Options dialog so that it does not cover up the main window. Then you can see the affect of your changes. (You can drag the Main Options dialog by pointing at its Title Bar, holding down the left mouse button, and dragging the mouse.)

## Disc Info Button

Clicking this button (when there is a CD in your drive) will bring up the [CD Info](#) dialog. See also: [Disc Catalog](#).

## **Catalog Button**

Clicking this button will bring up the [List Disc Catalog](#) dialog. See also: [Disc Catalog](#).

## Rebuild Button

Clicking on this button will rebuild the index for the Disc Catalog. Use this if the Disc Catalog disk file becomes corrupted.



## About Button

Click this button to bring up the About dialog.

## Help Button

Click this button to bring up Help for this dialog.

## **OK Button**

Click this button to accept the changes youve made on this dialog.

## **Cancel Button**

Click this button to cancel the changes youve made on this dialog.

## **Exit Button**

Click this button to terminate MicroPlayerCD™. You can also accomplish this task by double-clicking on the main window (on any non-button surface).

## CD Info Dialog

This is the CD Info dialog. You get to this dialog by clicking the **Disc Info** button on the Main Options when there is a disc in the CD player, or by clicking the **Edit** button on the List Disc Catalog dialog.

This dialog allows you to enter and change the name of the CD, the Artists name, and the names of all the tracks (up to 40 -- click the More button if there are more than 20 tracks). Once entered, this information is saved into the Disc Catalog database so that it can be retrieved the next time you play this CD. See Disc Catalog for more information.

Point at something on the CD Info dialog that you'd like help on, then click the left mouse button:

Track Name		Track Name			
01	3:46	Banquet at the World's End	11	4:01	Grace is the Smell of Rain
02	3:49	Traps, Ensnares	12	2:43	Noelle
03	5:32	Hole in the World	13	2:14	Wise Acres
04	3:48	[What's Come] Over Me	14	2:53	So Long Again
05	4:24	Buffalo Hills			
06	4:35	Guilty			
07	3:33	Motorcycle			
08	2:16	Wonderful			
09	0:56	So Long			
10	3:48	My Fronteir			

## **Disc Name**

Enter the name of the CD in this field.

## Artist Name

Enter the name of the Artist here. If the name is a persons name (and the example is not), then you might consider entering the name in Last Name First format, as in *John, Elton*. This will allow it to sort better when you list songs by the Artists name.



## **Total Tracks and Total Time**

This information is read directly from the CD. It shows the number of Tracks on the disc, as well as the Total Time of the disc.

## **Track Name**

Enter the name of each Track here.

## **Track Number**

The number of each track (1-20 or 21-40) appears here.

## **Track Time**

The length of each track appears here. Note that this time may be slightly different than what the cover of your CD says. There can be lots of reasons that these are different, but the most common one is that the CD cover does not include the time between tracks in this number, while the number shown here usually does.

## **OK Button**

Click this button to accept the changes youve made on this dialog.

## **More Button**

If there are more than 20 tracks on this CD, you can click this button to see the next set of tracks.

## **Cancel Button**

Click this button to cancel any changes you have made on this dialog.

## Help Button

Click this button to receive help on this dialog.

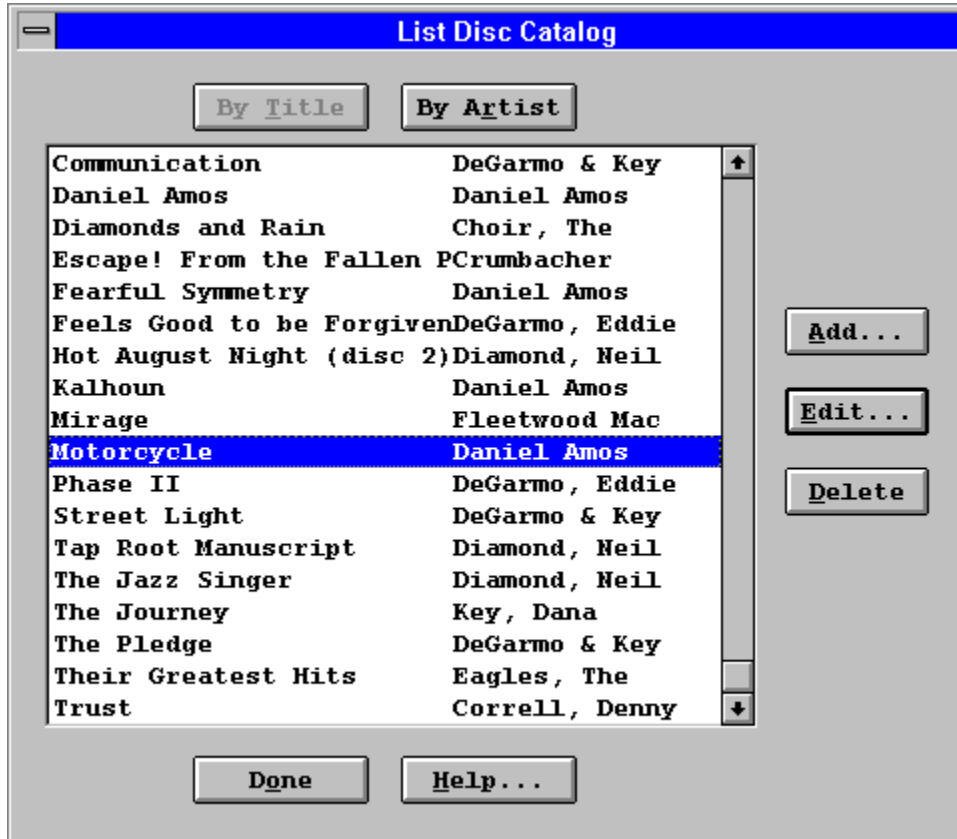


## List Disc Catalog Dialog

This dialog lists all CDs in your Catalog. You get to this dialog by clicking the **Catalog** button on the Main Window.

You can choose to list the CDs by the Title of the CD, or the name of the Artist. If you select an entry and click the **Edit** button, you'll be taken to the CD Info dialog from where you can view/edit the names of each song. See Disc Catalog for more information.

Point at something on this dialog that you'd like help on, then click the left mouse button:



## **By Title Button**

Click this button to list the Catalog alphabetically by the Title of the CD.

## **By Artist Button**

Click this button to list the Catalog alphabetically by the Name of the Artist.

## **Catalog List Box**

This is where each entry in your Catalog is displayed. You can select a CD and click the Edit or Delete button.

## **Add Button**

This button actually doesnt do anything except display a message telling you to use the Disc Info button on the Main Options dialog to add a new CD.

## **Edit Button**

If you select a CD and click on this button, you'll be taken to the [CD Info](#) dialog.

## **Delete Button**

If you select a CD and click this button, you can delete this entry.

## Done Button

Click this button when youre done using this dialog.



## **Help Button**

Click this button to bring up the On-Line Help.

## Go To Track Dialog

This is the Go To Track dialog. You get to this dialog by clicking the **Go To Track** button on the Main Window when there is a disc in the CD player. Select a Track and click the OK button (or double-click a Track) and the CD will start playing at this Track.

This dialog lists all tracks on the CD (up to 40). If you have entered Catalog Information about this disc, then you will also see the Title of the CD, and the Names of the Tracks. See Disc Catalog for more information.

Point at something on the Go To Track dialog that you'd like help on, then click the left mouse button:



## Track List Box

This list box lists all tracks on the CD (up to 40). If you have entered Catalog Information about this disc, then you will also see the Title of the CD, and the Names of the Tracks. See [Disc Catalog](#) for more information.

Select a Track and click the OK button (or double-click a Track) and the CD will start playing at this Track.

## **OK Button**

Select a Track and click this button (or double-click a Track) and the CD will start playing at this Track.

## **Cancel Button**

Click this button if you dont want to go to a specific Track.

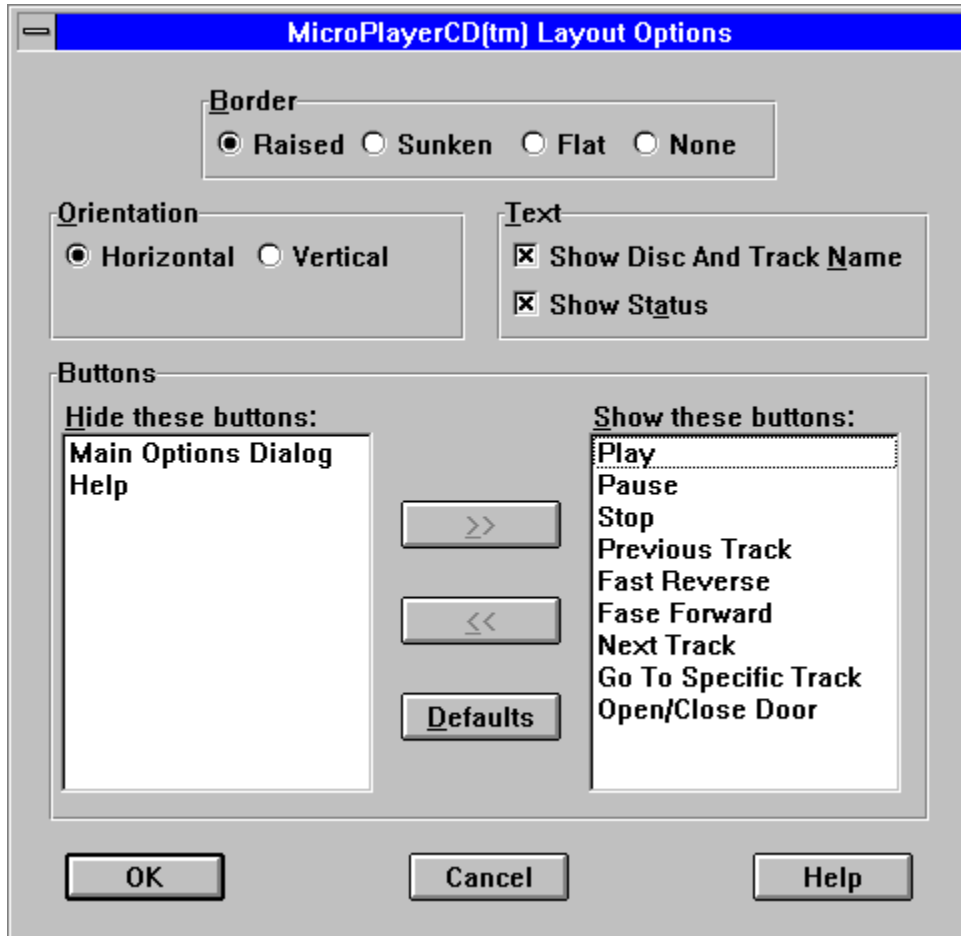
## **Help Button**

Click this button to bring up the On-Line Help for this dialog.

## Layout Dialog

This is the Layout dialog. You get to this dialog by clicking the Layout button on the [Main Options](#) dialog.

Point at something on the Layout dialog that you'd like help on, then click the left mouse button:



## Border Style

This set of radio buttons allows you to define how the borders of MicroPlayerCD™ will look. The options are **Raised**, **Sunken**, **Flat**, and **None**. Rather than trying to describe the look, why not try each one and see for yourself!



## **Orientation**

MicroPlayerCD™ defaults to a horizontal layout. If you prefer, you can have it be vertical instead. You might experiment with the vertical look by choosing to show only a few buttons.

## **Show Disc And Track Names Option**

If this option is selected, MicroPlayerCD™ will show the name of the current disc being played, as well as the name of the current track. Use this feature in conjunction with the [Disc Catalog](#).

## Show Status Option

MicroPlayerCD™ shows information about the status of the CD drive in a portion of the Main Window. This status can be the current track number and time, or messages such as open.

If youd prefer not to see the status, you can un-select this option.

## Pick And Choose Buttons

This section lets you control which buttons you want displayed on the Main Window, and which ones you dont. Heres how it works:

Everything in the list box titled **Hide these buttons** will not appear on the main window, and everything in the list box titled **Show these buttons** will.

To move an option from one list box to the other, point at the option and double-click it. Another way to do it is to hilight the option (or options), then click one of the transfer buttons (the buttons with >> and << on them).

You can return to the default setup by clicking on the **Defaults** button.

## **OK Button**

Click on this button to make your changes take affect.

## **Cancel Button**

Click on the button to discard any changes youve made on this dialog.

## **Help Button**

Click this button to bring up the On-Line Help for this dialog.

## About Shareware

[Definition And Comments](#)

[Registration Form](#)

[Support](#)



## Shareware Definition (and Comments)

This program, MicroPlayerCD™, is Copyright © 1993-94 by Daniel Thomas. All rights reserved.

MicroPlayerCD is Shareware. This means that you are free to use it for a trial period, at no charge. After a reasonable trial period, if you continue to use it, you must register it.

This program is a fully functional version, and is not crippled in any way. I do not believe in crippling software in order to force registration.

To register your copy of MicroPlayerCD, please print and fill out the [registration form](#). CompuServe users can register on-line. GO SWREG, Reference ID number 2081.

When you register, you will receive:

- the right to continue to use this program
- a registration number that will get rid of the reminder screen
- the current version on disk
- a small printed manual

You may distribute this program freely, as long as all files are included EXCEPT THE FILE MICROPLA.INI, and the files are not modified in any way.

You can contact me on-line in the following locations:

CompuServe:	72301,2164
Prodigy:	CWRF01A
America On Line:	72301,2164@cis
Internet:	72301,2164@compuserve.com

Dan Thomas  
2301 N. Huron Circle  
Placentia, CA 92670  
(714) 524-5625

Thanks for your support.

# Registration Form

Compuserve users can register on-line. GO SWREG, Reference ID number 2081.

You can print this form by selecting File/Print Topic from the Windows Help menu (above). Most printers will be able to print this. If yours doesn't, load the file MICROPLA.REG into NOTEPAD and print it from there.

---

## MicroPlayerCD™ Version 1.10 Registration Form

Name: \_\_\_\_\_

Company: \_\_\_\_\_

Address: \_\_\_\_\_

City: \_\_\_\_\_ State: \_\_\_\_\_ Zip: \_\_\_\_\_

Phone: (\_\_\_\_\_) \_\_\_\_\_ Country: \_\_\_\_\_

Electronic Mail (or Compuserve ID): \_\_\_\_\_

Where did you find MicroPlayerCD™?

---

MicroPlayerCD registration: \$20.00 \$ \_\_\_\_\_

Gets you:

the right to continue to use this program  
registration number  
the current version on disk  
a small printed manual

**Disk size(circle one):** **5.25** **3.5**

Shipping & Handling (\$3 US and Canada, \$6 elsewhere): \$ \_\_\_\_\_

Total (US Funds): \$ \_\_\_\_\_

---

Checks must be drawn on a US bank, and payable in US funds. Canadian customers can get a Canadian Post Office Money Order - make sure it is in US funds.

Please make checks payable to: Daniel Thomas

Send to: Daniel Thomas  
2301 N. Huron Circle

Placentia, CA 92670

## Support Policy

Unlimited support is available for all users, registered or un-registered. I will gladly accept phone calls, but if you don't catch me in I'd rather not return long distance phone calls unless it's urgent. E-mail is the best way to reach me.

CompuServe:	72301,2164
Prodigy:	CWRF01A
America On Line:	72301,2164@cis
Internet:	72301,2164@compuserve.com

PHONE: It has to be on your dime. (714) 524-5625 nights (Pacific Time).

Dan Thomas  
2301 N. Huron Circle  
Placentia, CA 92670  
(714) 524-5625

## Miscellaneous

### Acknowledgments

MicroPlayerCD™ was written in Borland Pascal.

### Trademarks

Windows is a trademark of Microsoft Corp.  
Borland Pascal is a trademark of Borland International.  
MicroPlayerCD is a trademark of Daniel Thomas.

### Revision History

2-13-94 version 1.01

First public release

2-15-94 version 1.02

Fixed a very minor problem painting the border of the Main Window

2-26-94 version 1.03

Added CompuServe SWREG number: 2081

Added the Layout dialog, with control over what buttons will be shown

Clicking on a button now updates the display immediately

12-11-94 version 1.05

Increased the number of Tracks in database to 40

Improved the appearance of very small buttons

# The Association of Shareware Professionals

## ASP Ombudsman Information

This program is produced by a member of the Association of Shareware Professionals (ASP). ASP wants to make sure that the shareware principle works for you. If you are unable to resolve a shareware-related problem with an ASP member by contacting the member directly, ASP may be able to help. The ASP Ombudsman can help you resolve a dispute or problem with an ASP member, but does not provide technical support for members' products. Please write to the ASP Ombudsman at 545 Grover Road, Muskegon, MI 49442 or send a Compuserve message via Compuserve Mail to ASP Ombudsman 70007,3536.

## ASP POLICY ON NO CRIPPLING

The principle behind shareware is "try before you buy." ASP believes that users have a right to try a fully functioning shareware program in their regular computing environment. Accordingly, ASP authors agree that:

- (1) The executable files (and/or items linked in with executables) in their shareware and registered versions will be the same (with the exceptions noted below)
- (2) All the program's features will be fully documented.
- (3) Registration encouragement procedures which in the judgment of the Board are either unreasonable or unprofessional are not allowed.

Registration Reminder Screens should (if used):

- 1) be displayed no more than twice each time the program runs (or twice per day for long-running programs such as TSR's).
- 2) not require more than two keystrokes to bypass.
- 3) not have a forced minimum display time of more than three seconds. In other words, the RRS itself should not take control of the computer away from the user for more than three seconds.

Practices such as creating undocumented hidden files or printing a registration form without the user's knowledge or consent are prohibited. It is NOT necessary to have any of the above as a simple "Strike Any Key To Continue" is the least objectionable to the user.

Exceptions to a strict interpretation of this policy are as follows:

to save disk space, tutorial and additional explanatory material may be left out of the shareware documentation.

the shareware version may have registration encouragement procedures absent from the registered version (or which can be disabled with a code only provided to registered users).

the registered version may include sample files not included in the shareware version.

if source code is offered with the registered version, it may be withheld from the shareware version.

the author may provide two shareware versions: one a small version which the author designates the distributed version in normal circumstances (e.g. language tools in C only available in one model) so long as the full shareware version is available from some public source (possibly for a small distribution fee) and may be copied for trial purposes. The small version's documentation must clearly describe how users may obtain the full shareware version.

the author may provide an enhanced retail version of the program so long as it is not (in the opinion of 60% of the BoD) merely an attempt to circumvent this no crippling policy

registered users may be provided bonus utilities unrelated to (and which do not change) the basic functionality of the program

registered users may be given utilities which provide a convenience but which are not essential

exceptions approved by the ASP board of directors by a 60% vote of those voting

