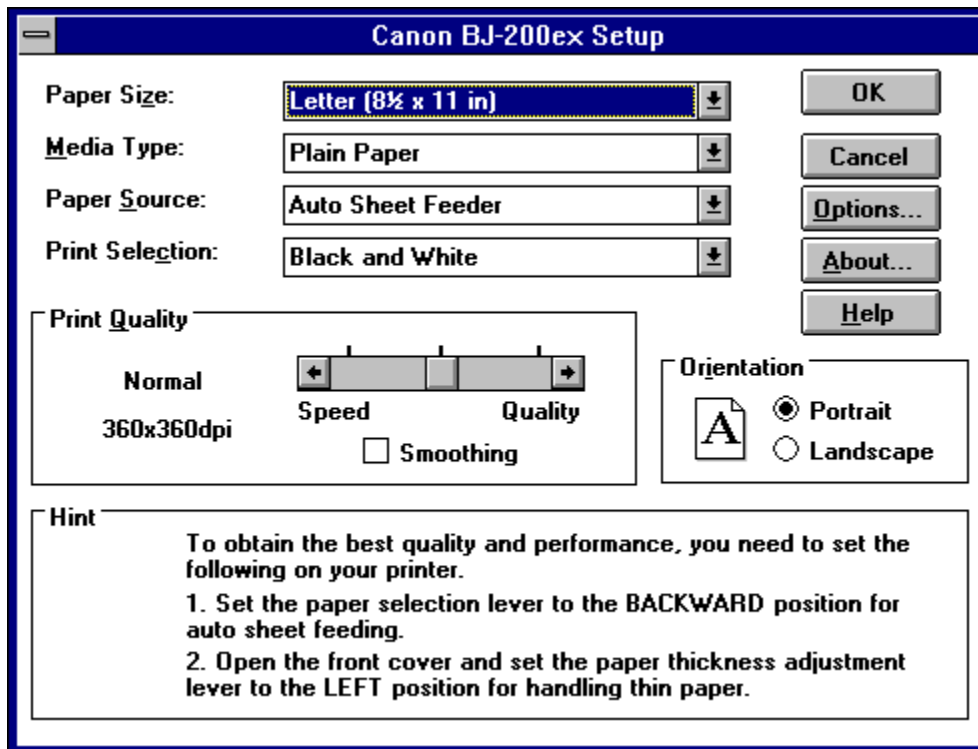


# BJ-200ex Setup Help

Welcome to On-Line Help for the Canon BJ-200ex printer.

The following topics relate to the controls that are available in the **Canon BJ-200ex Setup** dialog box. Use the mouse to click on the Help topic that you want to review.



[Paper Size](#)

[User Defined Paper Size](#)

[Media Type](#)

[Paper Source](#)

[Print Selection](#)

[Print Quality](#)

[Orientation](#)

## BJ-200ex Options Help

[Halftone](#)

[Intensity](#)

[Where to Find More Help](#)

# Paper Size

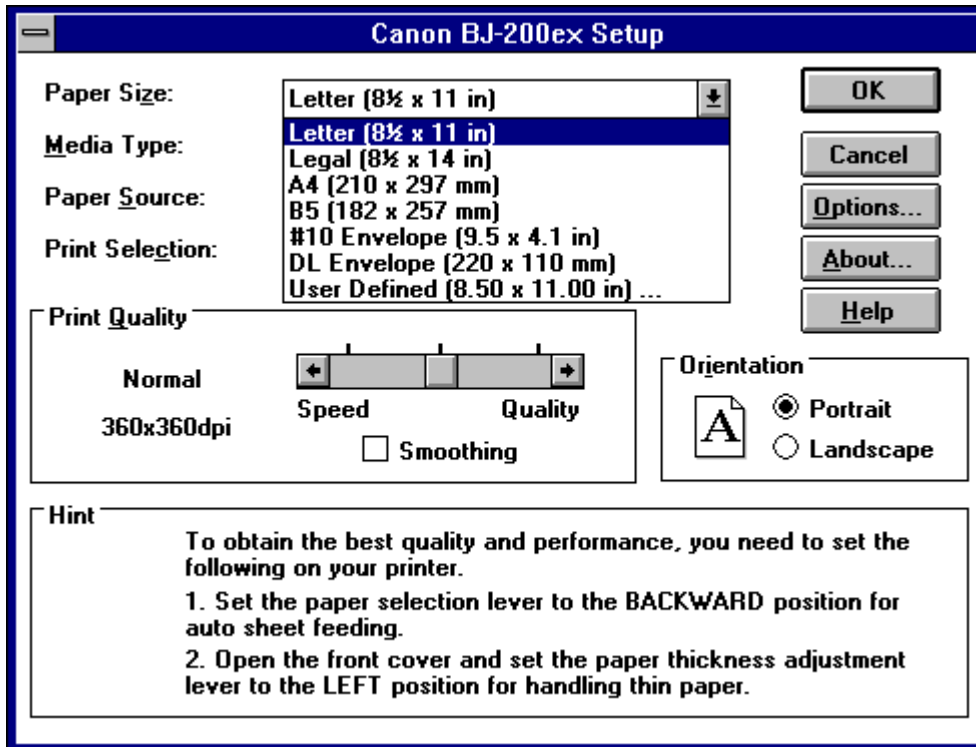
The **Paper Size** specifies the size of the paper inserted in the BJ-200ex printer.

The following paper sizes can be selected with the Paper Size drop-down list:

- n **Letter:** This paper size corresponds to the standard 8.5 x 11 inches (216 x 279 millimeters) paper size used in the United States. This is the default paper size.
- n **Legal:** This paper size corresponds to the standard 8.5 x 14 inches (216 x 356 millimeters) paper size used in the United States.
- n **A4:** This paper size corresponds to the standard A4 210 x 297 millimeters (8.27 x 11.69 inches) paper size used in Europe and Asia.
- n **B5:** This paper size corresponds to the standard B5 182 x 257 millimeters (7.17 x 10.12 inches) paper size used in Europe and Asia.
- n **#10 Envelope:** This paper size corresponds to the standard (9.5 x 4.1 inches) #10 envelope used in the United States.
- n **DL Envelope:** This paper size corresponds to the standard (220 x 110 millimeters) DL envelope used in Europe and Asia.
- n **User Defined Size:** This setting activates a dialog box that enables you to specify a special paper size for printing with the BJ-200ex printer. This setting is described in the User Defined Paper Size section.

To specify the Paper Size:

1. Click on the **Paper Size** drop-down list or press ALT+Z and then SHIFT+ALT+Down Arrow. The list of paper sizes will appear as shown in the following diagram:



2. Click on the paper size that corresponds to the paper inserted in the Canon BJ-200ex printer. The Paper Size drop-down list will collapse and display the paper size that you selected. You can also

press the down or up arrow keys to choose a size.

3. Click on the OK button to close the Canon BJ-200ex Setup dialog box and again on the OK button to close the Print Setup dialog box.

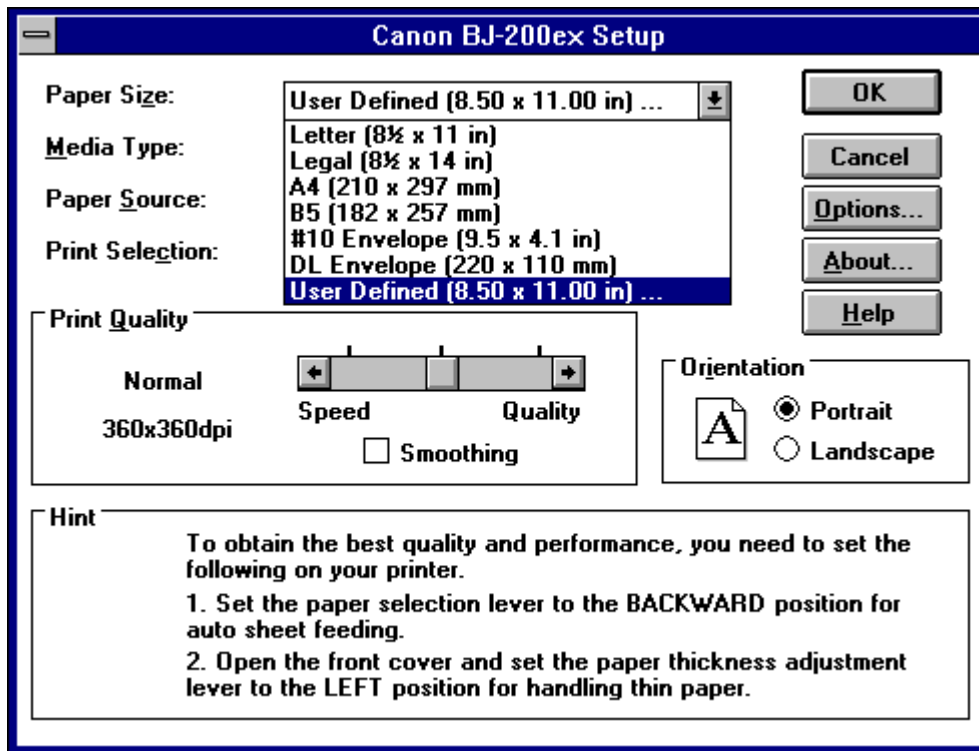
At this point, the paper size has been set, and will be used when printing with the Canon BJ-200ex printer.

# User Defined Paper Size

In addition to the standard paper sizes provided in the Paper Size drop-down list, you can define your own special paper size using the User Defined Paper Size dialog box.

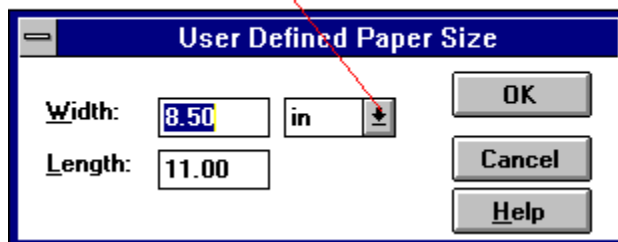
To specify the User Defined Paper Size:

1. Click on the **Paper Size** drop-down list or press ALT+Z and then SHIFT+ALT+Down Arrow. The list of paper sizes will appear as shown in the following diagram:



2. Click on the User Defined Size menu selection or press the down or up arrow keys until that selection appears. The User Defined Paper Size dialog box will appear as shown in the following diagram:

Click here to select measurement system.



3. Enter the dimensions for the paper size that you want to use:

**Width:** You may enter any size from 4.1 inches to 8.5 inches.

**Length:** You may enter any size from 4.1 inches to 14.0 inches.

**Measurement System:** A drop-down list in the User Defined Paper Size dialog box enables you to select an alternate measurement system. From this drop-down list, you can select "in" (inches, the default setting), or "mm" (millimeters).

4. Click on the OK button to close the User Defined Paper Size dialog box.
5. Click on the OK button to close the Canon BJ-200ex Setup dialog box and again on the OK button to close the Print Setup dialog box.

At this point, the User Defined Size has been set, and will be used when printing with the Canon BJ-200ex printer.

# Media Type

The **Media Type** setting specifies the type of "media" (such as paper or transparency film) that will be printed on. This setting is important for controlling the quality of the final printed image. Specifying the correct Media Type setting is essential for producing high-quality printed images.

Two settings are available in the Media Type drop-down list:

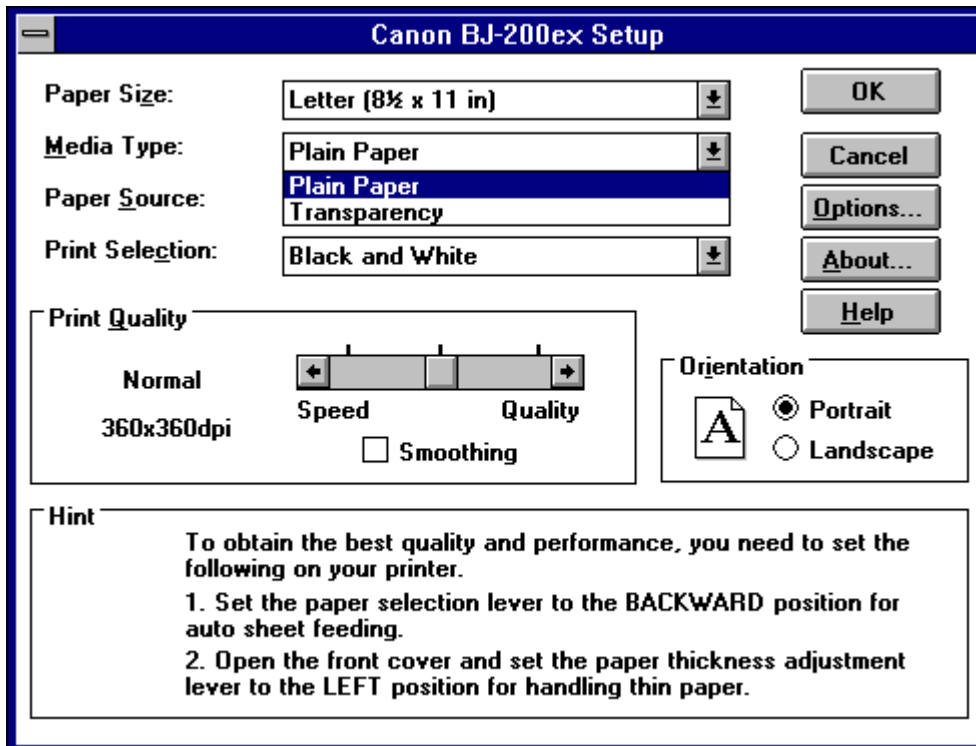
- n **Plain Paper:** Use this setting to specify printing on plain paper. This setting will set the ink dots generated by the printer to yield the highest quality printed image with bond type paper.
- n **Transparency:** Use this setting to specify printing on transparency material. Use Canon recommended transparency material to achieve the sharpest possible images. Choosing this setting automatically changes the Paper Source to Auto Sheet Feeder.



**Important:** When using heavy-bond (thick) paper, be sure to adjust the green paper-thickness adjustment lever on the BJ-200ex printer. The green paper-thickness adjustment lever is located behind the front cover, near the ink cartridge assembly. For complete information about setting the printer to accommodate various paper thicknesses, refer to the *Canon BJ-200ex User's Manual*.

To specify the Media Type:

1. Click on the **Media Type** drop-down list or press ALT+M and then SHIFT+ALT+Down Arrow. The list of media types will appear as shown in the following diagram:



2. Click on the media type that corresponds to the media that you want to use with the Canon BJ-200ex printer (e.g., "Plain Paper"). The Media Type drop-down list will collapse and display the media type that you selected. You can also press the down or up arrow keys to choose a media type.

3. Click on the OK button to close the Canon BJ-200ex Setup dialog box and again on the OK button to close the Print Setup dialog box.

At this point, the Media Type has been set, and will be used when printing with the Canon BJ-200ex printer.

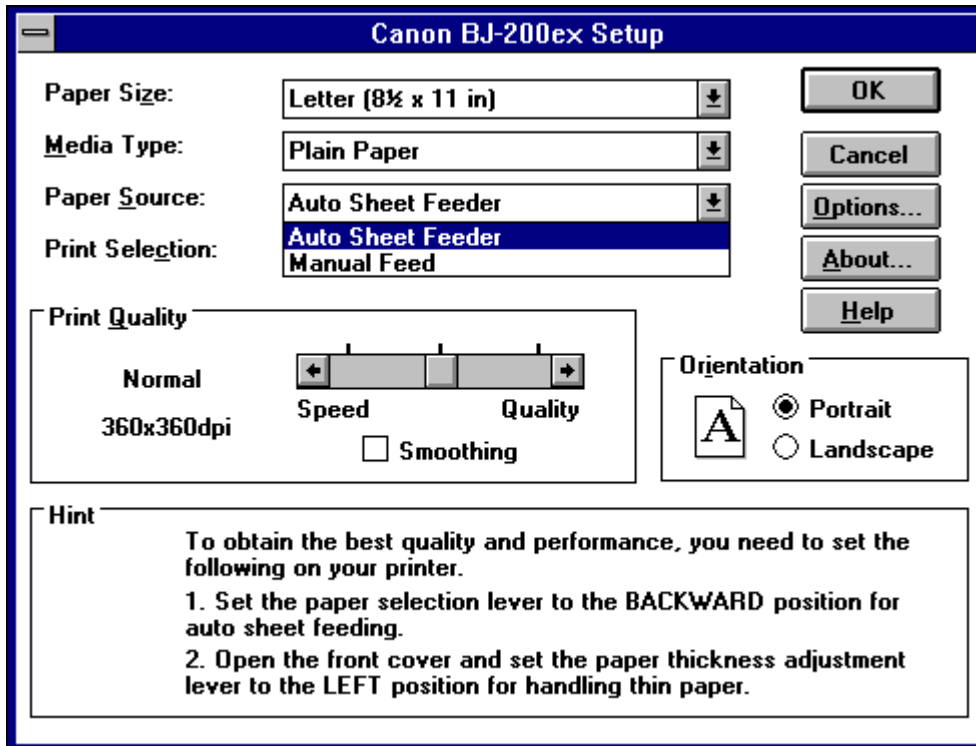
# Paper Source

The **Paper Source** setting specifies how paper (or other media, such as transparency film) will be fed into the Canon BJ-200ex printer.

The default setting for the Paper Source is Auto Sheet Feeder, which means that paper will be fed into the printer from the sheet feeder mechanism of the Canon BJ-200ex printer. As an alternative, you may specify the manual feed mechanism for printing.

To specify the Paper Source:

1. Click on the **Paper Source** drop-down list or press ALT+S and then SHIFT+ALT+Down Arrow. The list of paper sources will appear as shown in the following diagram:



2. Click on the paper source that you want to use with the Canon BJ-200ex printer (e.g., "Auto Sheet Feeder"). The Paper Source drop-down list will collapse, and display the paper source that you selected. You can also press the down or up arrow keys to choose a source.
3. Click on the OK button to close the Canon BJ-200ex Setup dialog box and again on the OK button to close the Print Setup dialog box.

At this point, the Paper Source has been set, and will be used when printing with the Canon BJ-200ex printer.



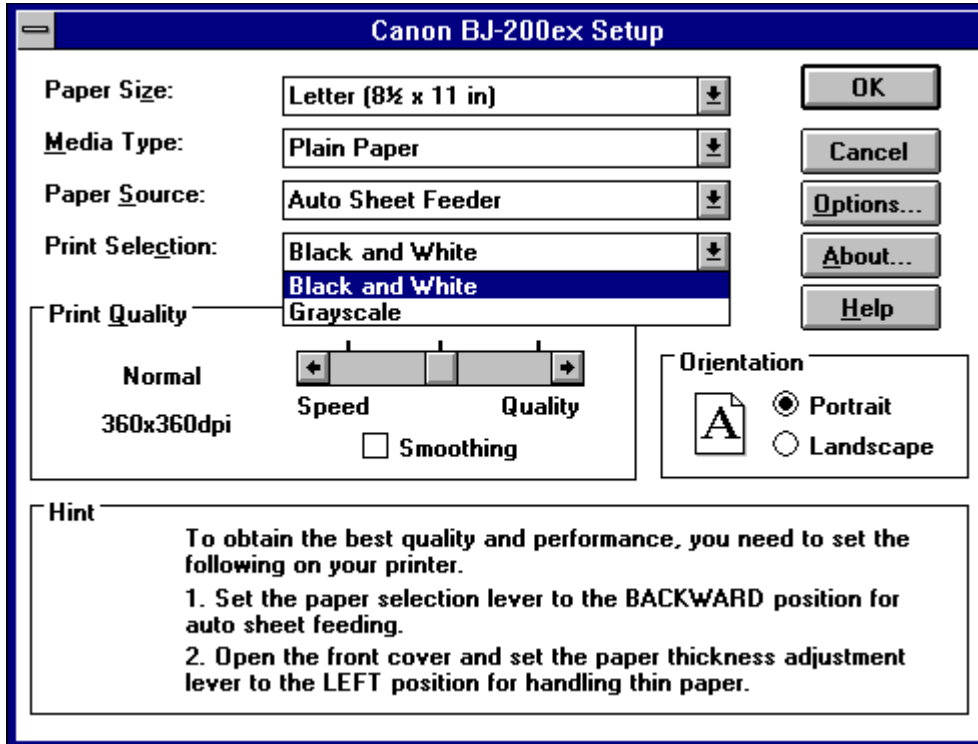
# Print Selection

The **Print Selection** setting specifies how your files will be printed by the BJ-200ex. You can specify that your files will be printed in Black and White (the default setting) or in Grayscale.

You should use the Grayscale setting if your files contain graphics or photographic images.

To specify the Print Selection:

1. Click on the **Print Selection** drop-down list or press ALT+C and then SHIFT+ALT+Down Arrow. The list of selections will appear as shown in the following diagram:



2. Click to choose Black and White or Grayscale for the type of file that you are printing. The Print Selection drop-down list will collapse, and display your selection. You can also press the down or up arrow keys to make a choice.
3. Click on the OK button to close the Canon BJ-200ex Setup dialog box and again on the OK button to close the Print Setup dialog box.

At this point, the Print Selection has been set, and will be used when printing with the Canon BJ-200ex printer.

**Note:** If you selected Grayscale, you can also select the type of dot pattern that will be used for printing shades of gray. This is available in the Halftone setting, that appears in the Options dialog box.

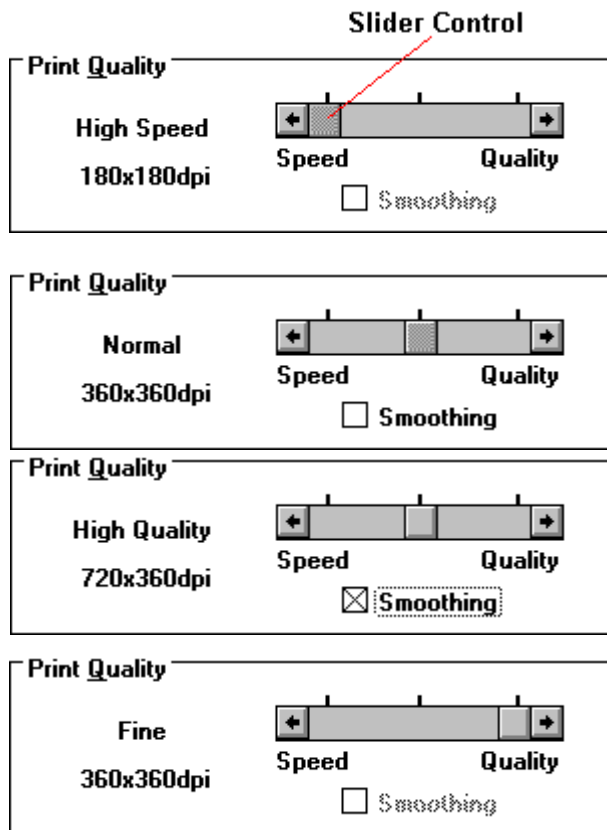
# Print Quality

The **Print Quality** setting specifies the overall quality of the document printed by the BJ-200ex printer. There are four Print Quality settings in the Canon BJ-200ex Setup dialog box:

- n **High Speed:** This setting increases the speed of the Canon BJ-200ex printer by reducing the resolution to 180 dpi (dots-per-inch). This setting is ideal for printing draft copies of files.
- n **Normal:** This setting specifies that files will be printed at the normal 360 dpi resolution. This setting also enables the Smoothing option. When you turn on Smoothing, the sharpness of the printed images will be enhanced and the setting will automatically switch to High Quality.
- n **High Quality:** Selecting the Smoothing option activates this setting, which specifies that files will be printed at 720 x 360 dpi resolution.
- n **Fine:** This specifies that files will be printed at 360 dpi but applies special printing techniques to enhance the appearance of the print output. This setting requires the greatest amount of time to print.

To specify the Print Quality:

1. Click and drag on the Print Quality slider control, or click on the left or right arrows of the scroll bar. You can also press ALT+Q and the left or right arrow keys. The following diagrams show the four settings that are available:



2. Click on the OK button to close the Canon BJ-200ex Setup dialog box, and again on the OK button to close the Print Setup dialog box.

At this point, the Print Quality has been set, and will be used when printing with the Canon BJ-200ex printer.

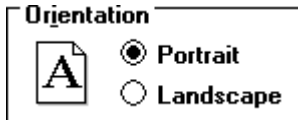


# Orientation

The Orientation setting specifies how the document will be printed on the page. Two options are available: "Portrait" (vertical page) or "Landscape" (horizontal page). The Orientation setting enables you to change the way the image is printed without changing the position of the paper in the paper tray of the Canon BJ-200ex printer.

To specify the Orientation:

1. Click to select the Orientation that you want to use for printing. You can also press ALT+I and press the up or down arrow keys to choose an orientation.



2. Click on the OK button to close the Canon BJ-200ex Setup dialog box and again on the OK button to close the Print Setup dialog box.

At this point, the Orientation has been set, and will be used when printing with the Canon BJ-200ex printer.

# Halftone

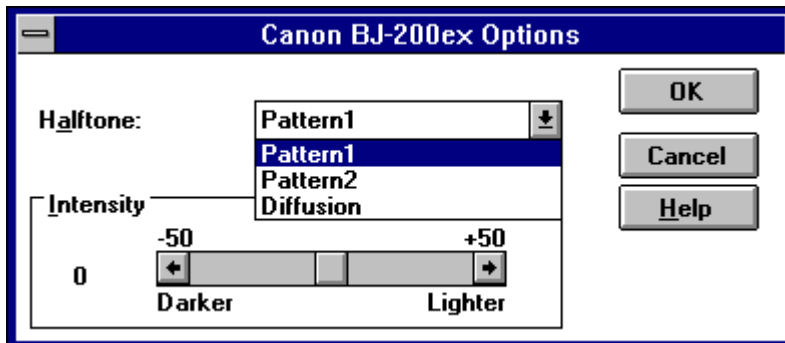
The Halftone setting specifies the type of dot pattern that will be used for printing images. There are three halftone settings:

- n **Pattern1, Pattern2:** These settings specify that a uniform pattern of dots will be used to simulate intermediate shades of gray. You should use these settings when printing files that have large areas of uniform grays, such as bar graphs and pie charts. Try each setting to discover which is best for the printed output.
- n **Diffusion:** This setting specifies that a random "diffuse" pattern of dots will be used to simulate intermediate shades of gray. The Diffusion method is best suited for printing documents that contain finely detailed graphics or photographic images.

**Note:** The Diffusion and Pattern2 settings are only available when Grayscale is selected in the Print Selection drop-down list. If Black and White is selected, the only Halftone method available will be Pattern1.

To specify the Halftone method:

1. Click on the Options button in the Canon BJ-200ex Setup dialog box or press ALT+O. The Options dialog box will appear.
2. Click on the **Halftone** drop-down list or press ALT+A and then SHIFT+ALT+Down Arrow, so that the Halftone drop-down list opens:



Click to select the Halftone method that you want to use or use the up or down arrow key. The Halftone drop-down list will collapse and display your selection.

3. Click on the OK button to close the Options dialog box.
4. Click on the OK button to close the Canon BJ-200ex Setup dialog box and again on the OK button to close the Print Setup dialog box.

At this point, the Halftone method has been set, and will be used when printing shades of gray with the Canon BJ-200ex printer.

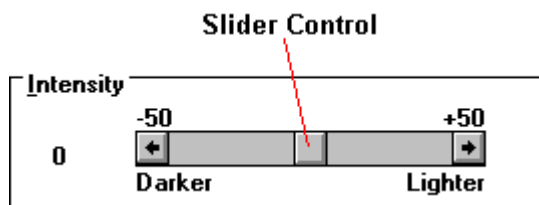
# Intensity

The Intensity control specifies the intensity of the ink used for printing. The Intensity control affects all areas of the print generated by the BJ-200ex, including all text and graphics.

Under most conditions, the default setting of 0 (zero) will give the best results. The Intensity control is a slider control that can be adjusted to anywhere from -50 (much darker) to +50 (much lighter).

To specify the Intensity:

1. Click on the Options button in the Canon BJ-200ex Setup dialog box or press ALT+O. The Options dialog box will appear.
2. Click on the Intensity slider control, and drag it to the setting that you want to use. You can also click on the left or right arrows on either side of the scroll bar to choose a setting. A third option is to press ALT+I and use the left or right arrow keys.



3. Click on the OK button to close the Options dialog box.
4. Click on the OK button to close the Canon BJ-200ex Setup dialog box and again on the OK button to close the Print Setup dialog box.

At this point, the Intensity has been set, and will be used when printing with the Canon BJ-200ex printer.

## Where to Find More Help

In the event that you cannot solve a problem with BJ-200ex Windows Driver software, review this Help file and all of the Troubleshooting information that appears in the *Canon BJ-200ex Users Manual*. If you still cannot resolve the problem, contact the appropriate Canon office listed below:

### ***United States***

Canon Computer Systems, Inc.  
2995 Redhill Ave.  
P. O. Box 5048  
Costa Mesa, CA 92628-5048  
(800) 423-2366

### ***Canada***

Canon Canada Inc.  
Attn: Printer Product Support  
6390 Dixie Road  
Mississauga, Ontario, L5T 1P7, Canada  
(416) 795-1111

### ***Australia***

Canon Australia Pty Ltd.  
One Thomas Holt Drive  
North Ryde, Sydney,  
N. S. W. 2113, Australia  
2-805-2642

### ***New Zealand***

Canon New Zealand Ltd.  
Fred Thomas Drive, Takapuna  
P. O. Box 33-336  
Auckland, New Zealand  
9-486-1570

### ***United Kingdom***

Canon Help Desk Support Centre  
P. O. Box 431, Sutton, Surrey, SM6 OXD  
TEL: (0891) 616151 (Calls charged at 39p per minute cheap rate and  
49p per minute at all other times)  
FAX: (081) 773-0911  
BBS: (081) 669-4586

### ***Singapore, Malaysia, Thailand and Indonesia***

Canon Singapore Pte. Ltd.  
79 Anson Road, #09-01/06  
Singapore 0207  
65-532-4400

### ***Hong Kong, Korea, Philippines, and Taiwan***

Canon Hong Kong Trading Co., Ltd.  
10F., Mirror Tower, 61 Mody Road  
Tsimshatsui East, Kowloon  
Hong Kong

TEL: 852-7390802 FAX: 852-3697701

***China***

Pecan Inc., Shenzhen Office  
515 Forum Hotel, 67 Heping Road  
Shenzhen P. R. of China  
TEL: 86-755-5587746 FAX: 86-755-5587750



