

## KazStamp Help Contents



[Overview](#)



[Registration Information](#)



[License Agreement](#)



[Disclaimer of Warranty](#)



[Product Information](#)



## KazStamp Overview

**KazStamp** is a utility program that makes it easy to print envelopes or single labels of any size with the following steps:

- 1) Type the address into the editor using the New command.  
- or -  
Load the address from a text file using the Open command  
- or -  
Copy the address from the clipboard using the Copy command.
- 2) Use the Print Envelope command to print the envelope.



## KazStamp Registration

There are two versions of **KazStamp** - demonstration and registered. (Use the About command from the Help menu to determine which version you have.) The demonstration version contains the same features found in the registered version. However, the demonstration version runs for a maximum of one hour at a time.

You may use the demonstration version of **KazStamp** for up to fifteen days to evaluate the software. After these fifteen days, the program must be registered with **Kaczynski Software** if you continue to use it.

To register **KazStamp**, print a registration form using the Print Registration Form command from the File menu. Fill out the form and send it to **Kaczynski Software** with your registration fee of only \$5. You will receive the registration number to register your copy. In addition, you will receive a disk with the most recent version of **KazStamp** if you do not already have it.

---

Related Topics

License, Disclaimer of Warranty

## New Command (File Menu)

Use this command to clear the editor and create a new file for editing..

---

Related Topics  
[Open Command](#)

## Open Command (File Menu)

Use this command to bring an existing file into the editor.

---

Related Topics

[Copy Command](#), [Clear Command](#)

## Save Command (File Menu)

Use this command to replace the contents of the current file.

---

Related Topics  
[Save Command](#)

## SaveAs Command (File Menu)

Use this command to save the current file with a new name.

---

Related Topics

[SaveAs Command](#)

## Cut Command (Edit Menu)

Use this command to remove the selected text and place it on the clipboard.

---

Related Topics

[Copy Command](#), [Paste Command](#)



## Copy Command (Edit Menu)

Use this command to copy the selected text to the clipboard.

---

Related Topics

[Cut Command](#), [Paste Command](#)

## Paste Command (Edit Menu)

Use this command to paste the clipboard contents into the editor at the current cursor position.

---

Related Topics

[Copy Command](#), [Cut Command](#)

## Delete Command (Edit Menu)

Use this command to delete the selected text without copying it to the clipboard.

---

Related Topics

[Cut Command](#)

## Clear Command (Edit Menu)

Use this command to erase the window.

---

Related Topics

[Cut Command](#)

## Undo Command (Edit Menu)

Use this command to undo the previous editor command.

---

Related Topics

[SaveAs Command](#), [Clear Command](#)

## Find Command (Edit Menu)

Use this command to search for a specific word or phrase.

---

Related Topics

[Replace Command](#), [Find Next Command](#)

## Replace Command (Edit Menu)

Use this command to replace certain words or phrases.

---

Related Topics

[Find Command](#), [FindNext Command](#)

## Find Next Command (Edit Menu)

Use this command to find the next occurrence of the word or phrase previously specified with the [Find](#) command.

---

Related Topics

[Find Command](#), [Find Next Command](#)



## Select All Command (Edit Menu)

Use this command to select all text in the editor.

---

Related Topics

[Copy Command](#), [Cut Command](#), [Print Envelope Command](#)

## Printer Offsets Command (Options Menu)

Use this command to display the Envelope Offsets Dialog Box define the location on the envelope where the address should be printed.

---

Related Topics

Print Envelope Command

## **Print Envelope Command (File Menu)**

Use this command to display the [Print Envelope Dialog Box](#).

---

Related Topics

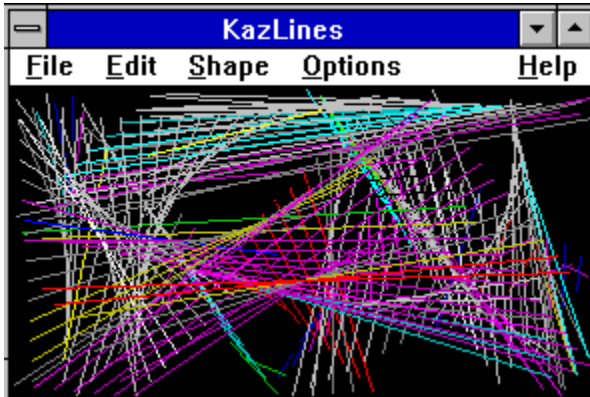
[Printer Offsets Command](#)



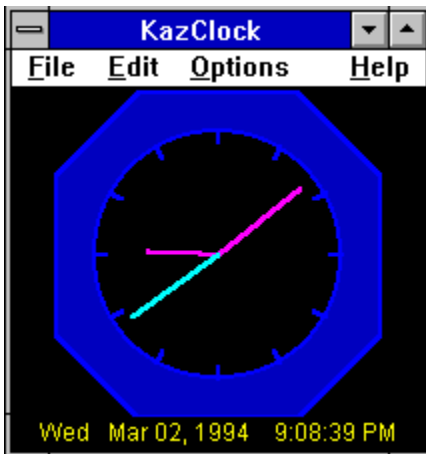


## Kaczynski Software Products

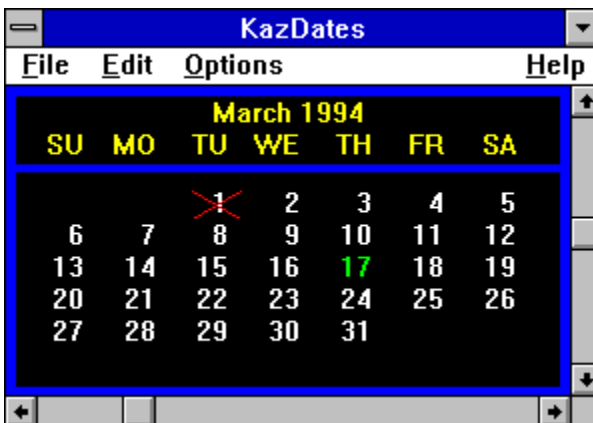
These are some of the programs available from [Kaczynski Software](#):



**KazLines** creates an image that continuously changes shape, size, and color. Different images can be created by selecting one of nine different shapes and changing the line and color characteristics.



**KazClock** provides an on screen clock with the ability to customize all colors. A built in alarm reminds you about important events.



**KazDates** provides a monthly calendar with scroll bars to easily change the month and year. Most of

the display attributes can be customized.



**KazStamp** makes it easy to print envelopes (including a return address and post office bar code) from a text file or any Windows word processor. The font and print area can be customized to fit any envelope.



## Disclaimer of Warranty

This software and documentation are provided **"as is"** and without warranties as to performance, merchantability, fitness for particular purpose, or any other warranties whether expressed or implied. The user assumes the entire risk of using this program. In no event will liability for any damages ever exceed the registration fee paid for the license to use the software, regardless of any form of the claim.

---

See Also

[License Agreement](#), [Registration](#)



## License Agreement

This software and documentation is owned and copyrighted by Daniel R. Kaczynski and **Kaczynski Software**. You may use the demonstration version of the software and documentation for up to fifteen days without cost or obligation. After these fifteen days, you must register the software if you wish to continue using it. After the registration fee has been paid to **Kaczynski Software**, you are entitled to unlimited use of one copy of the registered version of the software and documentation for the current and any future versions of the software.

---

See Also

[Registration](#), [Disclaimer of Warranty](#)



## Installation Dialog Box

The following dialog box appears when the program runs for the first time:



The image shows a Windows-style dialog box titled "KazLines Installation". It has a blue title bar with a minus sign on the left. The dialog box has a light gray background with a grid pattern. It contains two text input fields: one labeled "Name" and one labeled "Company". Below the input fields are three buttons: "OK" with a green checkmark icon, "Cancel" with a red X icon, and "Help" with a blue question mark icon.

You must enter your name, but the company field is optional. When the information is correct, push the OK button. Your copy of the program will be personalized with the information you provided.

---

See Also  
[Registration](#)

## Registration Dialog Box

The following dialog box appears when the [Register Command](#) is used:



The image shows a dialog box titled "KazLines Registration". It has a blue title bar with a minus sign on the left. The dialog box contains three text input fields, each with a label above it: "Name", "Company", and "Registration Number". At the bottom of the dialog box, there are three buttons: "OK" with a green checkmark icon, "Cancel" with a red X icon, and "Help" with a blue question mark icon.

You must enter your name and the registration number, but the company field is optional. When the information is correct, push the OK button. Your copy of the program is then registered to you. This will remove the one hour limitation of the demonstration version.

If you do not have a registration number, use the [Print Registration Form](#) command to request one.

---

See Also

[Registration](#), [Registration Command](#), [Print Registration Form](#)

## **Name**

Enter your name in this box so that your copy of the program can be personalized. This field is required.

## Company

Enter your company name in this box so that your copy of the program can be personalized. This field is optional.

## Registration Number

Enter the registration number provided by [Kaczynski Software](#). If you don't have a registration number, use the [Print Registration Form](#) command to request one.

## **Print Registration Form Command (File Menu)**

Use this command to print a copy of the registration form.

---

See Also

[Registration](#), [Registration Command](#), [Registration Dialog Box](#)

## Register Command (File Menu)

Use this command to register your copy of the program with the [Registration Dialog Box](#).

---

See Also

[Registration](#), [Registration Dialog Box](#), [Print Registration Form](#)

## **Exit Command (File Menu)**

Use this command to save the current configuration and stop the program.



## **Print Setup Command (File Menu)**

Use this command to modify the current printer settings.

## **OK Button**

Use this button to accept the entries made in the dialog box.

## **Cancel Button**

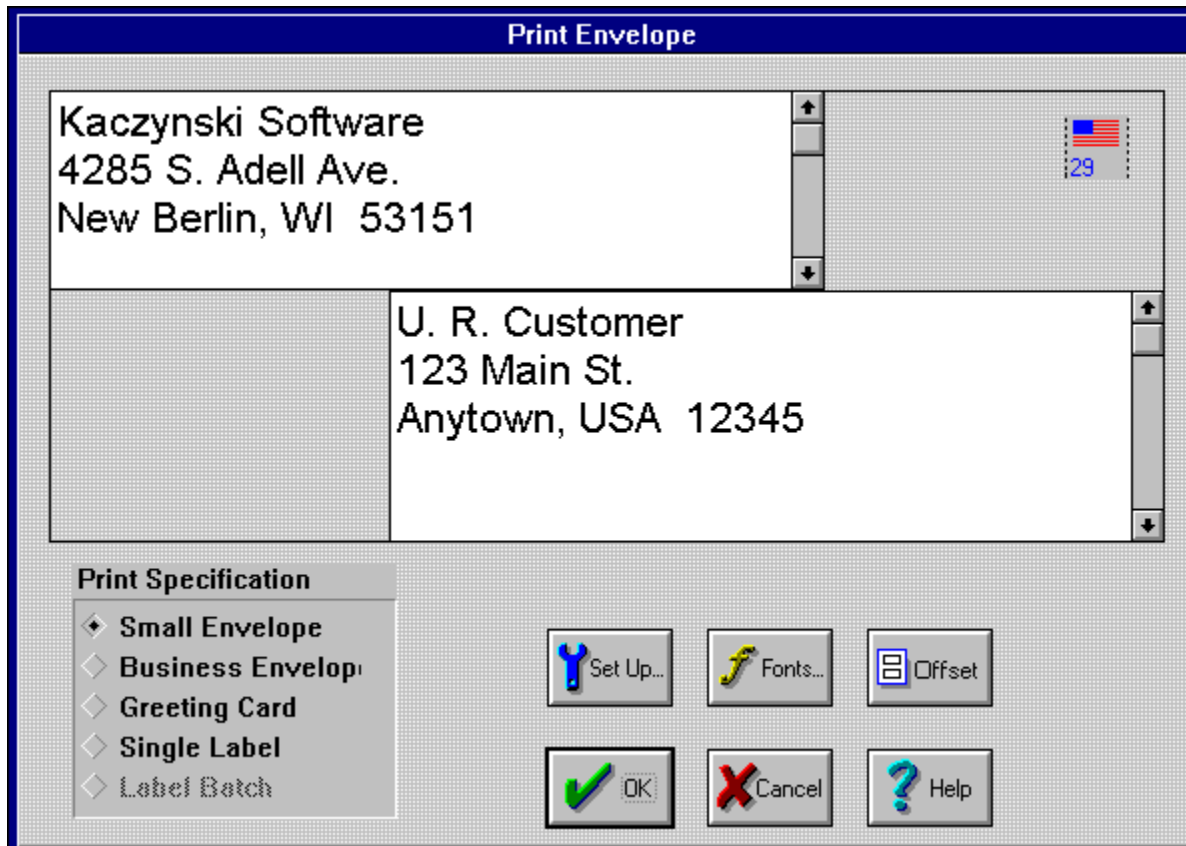
Use this button to close the dialog box without saving any changes.

## Help Button

Use this button to display this help page.

## Print Envelope Dialog Box

Click on the field in the box below for help on that field.



The dialog box is titled "Print Envelope" and contains two text input fields for addresses. The first field contains the sender's address: "Kaczynski Software", "4285 S. Adell Ave.", and "New Berlin, WI 53151". To the right of this field is a small icon of the United States flag and the number "29". The second field contains the recipient's address: "U. R. Customer", "123 Main St.", and "Anytown, USA 12345".

Below the address fields is a "Print Specification" section with a list of options:

- ◆ Small Envelope
- ◆ Business Envelope
- ◆ Greeting Card
- ◆ Single Label
- ◆ Label Batch

At the bottom of the dialog box are six buttons arranged in two rows:

- Top row: "Set Up..." (with a key icon), "Fonts..." (with a font icon), and "Offset" (with a list icon).
- Bottom row: "OK" (with a green checkmark icon), "Cancel" (with a red X icon), and "Help" (with a blue question mark icon).

## Envelope Size (Print Envelope Dialog Box)

Check the box that matches the size of your envelope. This selection determines how far from the top and left side of the envelope the addressee is printed. The default values are:

	<u>from right</u>	<u>from top</u>
Small Envelope	2.5"	1.3"
Buesiness Envelope	4.0"	1.7"
Greeting Card	3.0"	2.2"
Single Label	2.5"	2.5"

However, these values can be changed by using the Offsets Button.

---

Related Topics

Print Envelope Dialog Box

## Addressee (Print Envelope Dialog Box)

Enter the name and address that the envelope should be addressed to. The font can be changed by hitting the [Font Button](#).

---

Related Topics

[Print Envelope Dialog Box](#)

## Return Address (Print Envelope Dialog Box)

Enter the return name and address. The name and address you enter are saved in the .INI file. The font can be changed by hitting the Font Button.

---

Related Topics

[Print Envelope Dialog Box](#)



## Font Button (Print Envelope Dialog Box)

Use this button to select the font used to print the envelope.

---

Related Topics

[Print Envelope Dialog Box](#)

## Offset Button (Print Envelope Dialog Box)

Use this button to display the [Envelope Offsets Dialog Box](#) and set the printer offsets.

---

Related Topics

[Print Envelope Dialog Box](#)

## Setup Button (Print Envelope Dialog Box)

Use this button to define the printer to use to print the envelope.

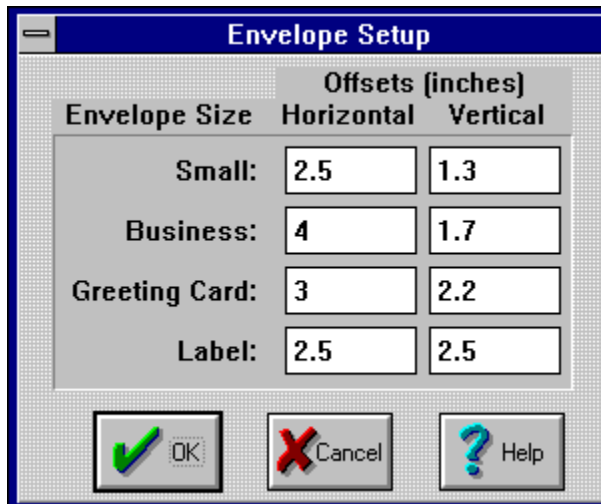
---

Related Topics

[Print Envelope Dialog Box](#)

## Envelope Offsets Dialog Box

Click on the field in the box below for help on that field.



The dialog box, titled "Envelope Setup", contains a table of offsets in inches for four envelope sizes. Each size has two input fields: "Horizontal" and "Vertical". The values are: Small (2.5, 1.3), Business (4, 1.7), Greeting Card (3, 2.2), and Label (2.5, 2.5). At the bottom are three buttons: "OK" with a green checkmark, "Cancel" with a red X, and "Help" with a blue question mark.

Envelope Size	Offsets (inches)	
	Horizontal	Vertical
Small:	2.5	1.3
Business:	4	1.7
Greeting Card:	3	2.2
Label:	2.5	2.5

OK Cancel Help

## Horizontal Offset (Envelope Offsets Dialog Box)

Use this field to specify the number of inches between the left margin and the addressee.

---

Related Topics

[Envelope Offsets Dialog Box](#)

## Vertical Offset (Envelope Offsets Dialog Box)

Use this field to specify the number of inches between the top margin and the addressee.

---

Related Topics

[Envelope Offsets Dialog Box](#)



