

Contents

Help is available for the following items:

[Overview](#)

[Commands](#)

[Procedures](#)

[Installation Notes](#)

[Ordering Information](#)

[Copyright Notice](#)

Overview

I wrote **File Matcher** to serve a simple purpose: match the files in a directory on my hard drive with the files on a floppy drive. I needed **File Matcher** to ensure that the **NEWEST** version was always preserved in file copying operations.

Here is the scenario: I have two computers, one at work and one at home. I often have to take files home to work on them and then return to the office to finish them. I would sometimes end up with three different versions of the same file: one on the floppy, one on the hard drive at home, and one on the hard drive at the office. Then I would have to look at the directory listings to figure out which was the current version.

File Matcher helps automate this 'sneaker net.'

[Installation Notes](#)

[Ordering Information](#)

[Copyright Notice and License Agreement](#)

Installation Notes

File Matcher was written and compiled using Microsoft Visual Basic ver3.0 (Pro). It requires a run-time file, VBRUN300.DLL, to run. This file will be included on the distribution disk if you got the program directly from me. It is not included in the archive file that's uploaded. You may get VBRUN300.DLL from most BBS's, CompuServe, AOL, Prodigy, and others. After you have this file, copy it to your "windows\system" directory. Several programs use this run-time file so you may already have it; you should check before downloading it.

Other than the run-time module, there is only one file required to run the program: FILEMTCH.EXE. I have also included a help file that you can install, but it is not necessary for the operation of the program.

The program makes it's own "ini" file and does not add anything to WIN.INI or SYSTEM.INI. So to un-install just delete the directory where the program is installed, and remove the icon from program manager if it exists.

As a design feature, **File Matcher** reads the two directories that it uses during program startup. This keeps you from having to choose a directory each time you use **File Matcher**. It does, however, have its down side. **File Matcher** will not start if either of the two directories cannot be accessed (directory doesn't exist, door open, disk not in, etc.)

File Matcher keeps track of its directories in its INI file in the following fashion. If you need to change it to some other drive/directory just insert the appropriate directory in the file. You may also just delete the INI file and the program will start using C:\ for both directories. *Have your registration number handy if you choose this method.*

```
FILEMTCH.INI
[General]
Source=c:\xfer\  <-- Notice trailing "\"
Target=c:\
```

Ordering Information

Copyright Notice and License Agreement

Copyright Notice and License Agreement

File Matcher is Copyright © 1994 by Barton K. Benson, Jr. all rights reserved.
File Matcher is distributed by the author, doing business as: **Lil'Sis Computing**.

License Statement

This license agreement permits you to use **File Matcher** (the **SOFTWARE**) on all computers belonging to (or provided for the exclusive use of) the registered owner. You may not share the REGISTERED copy with anyone else.

Copyright

The **SOFTWARE** is owned by Barton K. Benson, Jr. and is protected by United States Copyright laws and international treaty provisions. Therefore, you must treat the **SOFTWARE** like any other copyrighted material except that you may copy the **SOFTWARE** to any computer belonging to (or provided for the exclusive use of) the registered owner as indicated by the license statement above. You may not copy any printed material distributed with the **SOFTWARE**.

Shareware

You may freely give the shareware version of the **SOFTWARE** to anyone with the following restrictions:

You must include all files that were originally distributed with the **SOFTWARE**.

You may not charge a fee for the **SOFTWARE**. (You may charge a disk distribution fee not to exceed \$3.00 per disk.)

Note:

File Matcher is compiled with Microsoft's Visual Basic v3.0; therefore, portions of the code are copyright © Microsoft Corporation.

Limited Warranty

Limited Warranty

Limited Warranty

The following warranties shall be effective for 90 days from the date of registration:

- (i) Lil'Sis Computing warrants the media on which the SOFTWARE is distributed to be free of defects in materials and workmanship under normal use; and
- (ii) Lil'Sis Computing warrants that the program, unless modified by the purchaser, will substantially perform the functions described in the documentation provided by Lil'Sis Computing.

Lil'Sis Computing does not warrant that the SOFTWARE will meet purchaser's requirements or that operation of the SOFTWARE will be uninterrupted or error-free. Lil'Sis Computing is not responsible for problems caused by changes in the operating characteristics of computer hardware or computer operating systems that are made after the release of the SOFTWARE, nor for the problems in the interaction of File Matcher with other software.

These warranties are exclusive and in lieu of all other warranties of merchantability or fitness for a particular purpose or of any other warranty, whether express or implied.

Exclusive Remedy

Lil'Sis Computing will replace any defective distribution media without charge if the defective media is returned to Lil'Sis Computing within 90 days of registration.

This is Purchaser's sole and exclusive remedy for any breach of warranty or claim for contract, tort, or damages.

Limitation of Liability

Lil'Sis Computing and the author of the SOFTWARE shall not in any case be liable for special, incidental, consequential, indirect, or other similar damages arising from any breach of these warranties even if Lil'Sis Computing or its agent has been advised of the possibility of such damages.

The liability for damages of Lil'Sis Computing and the author of the SOFTWARE under this agreement shall in no event exceed the registration fee paid.

Ordering Information

When you register [File Matcher](#) you will get support (either on-line or by mail), your own copy of the program on disk complete with setup program, and my undying gratitude.

The best/fastest way to register is on-line, through CompuServe's SWREG area. That way, you will get your serial number (to remove the 'beg screens') quicker. The code number assigned to [File Matcher](#) is 2739 and the online registration fee is \$7.00 (\$6.00 plus \$1.00 shipping and handling).

To order by mail, use the "Order..." selection under "Help" on the main menu bar. Using this option will automate filling out and printing an order form.

If the "Order..." selection is missing, you have a copy which is registered to someone. You can check the registered owner's name by choosing "About" under "Help" in the main menu. If you weren't the one that registered, please delete the "FILEMTCH.INI" file and restart the program.

Whether or not you choose to register, I would appreciate your passing [File Matcher](#) around. I would also appreciate your feedback, either positive or negative, about [File Matcher](#). My address and CompuServe number are on the "About" screen.

File Matcher Commands

Help is available for these buttons:

Do It!

Match

Save

The Exit button merely exits the program and has the same effect as closing the **File Matcher** window.

Do It! Button

The 'Do It!' button starts the file copy process.

All files which are highlighted in either directory listing will be copied to the other directory. **This process does not give you a chance to cancel, and there is no warning when a file is about to be overwritten.**

This action may also be accomplished using the menu - Run/Do It!

If no files are highlighted, this button has the effect of combining the Match and Do It! buttons.

Match Button

The 'Match' button automates the file selection process.

This process examines the date and time stamp of each file on the two directories. Then it highlights all files which meet the following criteria:

- The file exists in one directory, but not in the other one.

- The file exists in both directories, but the highlighted one is the **NEWEST** of the two versions.

This action may also be accomplished using the menu - Run/Match

Since **File Matcher** uses the date/time stamp on the files, it is important the computers used are set to approximately the same time.

Also note that the two directories may be changed using some other Windows program. To allow for that, there is a menu selection for 're-reading' the directories. This menu selection has the effect of resetting the matching of the directories, too.

Save Button

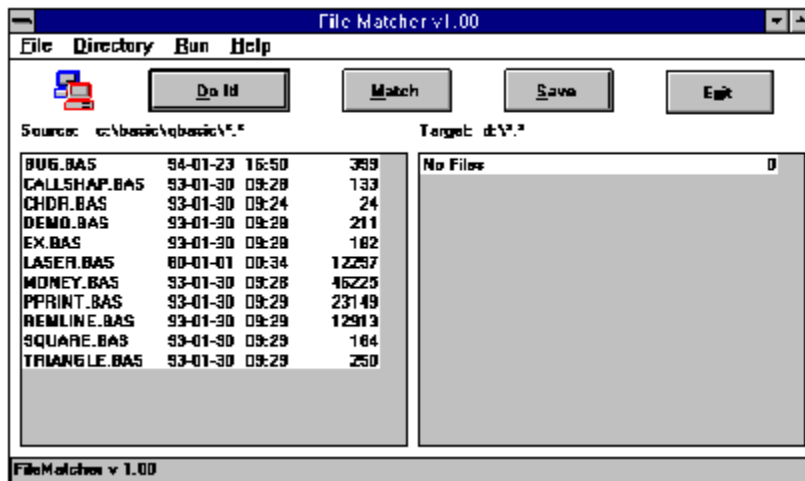
The 'Save' button records the current directory configuration in the initialization file for **File Matcher**.

The complete path for the current 'TARGET' and 'SOURCE' directories are stored in the FILEMTCH.INI file. These directories are accessed for the file listings at program startup. If either of the directories can not be accessed for any reason (drive not ready, directory does not exist, etc.) the program will not load until the problem has been fixed.

You may also save the defaults using the menu - File/Save

The use of the names 'TARGET' and 'SOURCE' is arbitrary. Files will be copied between the two directories in both directions.

Procedures



The complete path of the Source directory. Double click on this box to open a 'change directory' window. This directory may also be changed using the menu - Directory/Source.

The complete path of the Target directory. Double click on this box to open a 'change directory' window. This directory may also be changed using the menu - Directory/Target.

The current file listing of the Source directory with file date/time stamps and file size listed. You may use the mouse to select files you want to copy to the other directory. Any files which are highlighted in this listing will be copied to the Target directory when the Do It! button is clicked.

The current file listing of the Target directory with file date/time stamps and file size listed. You may use the mouse to select files you want to copy to the other directory. Any files which are highlighted in this listing will be copied to the Source directory when the Do It! button is clicked.

