

ExamineZip Help



- [Introduction](#)
- [Searching for Text](#)
- [Searching for Files](#)
- [Opening an Archive](#)
- [Menu Commands](#)
- [SpeedBar](#)
- [Command Line](#)
- [Registration](#)
- [Error Messages](#)

Introduction

ExamineZip is a fast and versatile text search utility for ZIP archives created with PKZIP from PKWARE inc (v2.0 or below). As ExamineZip does not require a copy of PKUNZIP to operate it can work solely under Microsoft Windows (v3.1) when searching for your information. The program can also perform file searches within archives or can be used as an Unzip utility where an opened archive can have its contents listed, tested, viewed or extracted to disk. However the program does not support multidisk archives nor can it decrypt encrypted files. ExamineZip has the following features:

- > It can search both text and binary files. The text files can have MS DOS, Macintosh or UNIX line endings. It also supports the formats of Microsoft Windows Write and Rich Text Format (RTF) while other formats are treated as binary files.
- > GREP regular expressions can be used in text searches.
- > Text and file searches can be started from any directory, with subdirectories being optionally searched, or alternatively multiple drives can be searched either on the same machine or across networks. The archives and files to be searched are selected using any combination of DOS file specifications.
- > Archives selected in the File Manager can be searched for text or files or simply opened by dragging and dropping them into ExamineZip.
- > The search data can be saved to disk or printed and can be displayed on the screen in a fully configurable manner.
- > The program is fully multitasking and can run in the background.
- > For faster access to certain commands you can use the SpeedBar.

This copy of ExamineZip is shareware. Shareware is a concept that allows users to assess software before buying it which benefits the user but the concept depends on your support. This program can be freely copied for the purpose of evaluation. However this program is **not** free and must be registered after an evaluation period of 30 days or its use be discontinued. Registration.

Searching for Text

To start a text search you can use either the Text Search button on the SpeedBar or the menu command File | Text Search. This will bring up the Text Search Dialog Box from which you can enter your search parameters. Alternatively you can use the drag and drop facilities of the File Manager and drag one or more archives into ExamineZip. As long as the Options (or System Menu) | Drag and Drop option is set to Text Search then the search parameters can be entered with the Text Search Drag and Drop Dialog Box. The results of a search are displayed in a Text Search Window.

Searching for Files

To start a file search you can use either the File Search button on the SpeedBar or the menu command File | File Search. This will bring up the File Search Dialog Box from which you can enter your search parameters. Alternatively you can use the drag and drop facilities of the File Manager and drag one or more archives into ExamineZip. As long as the Options (or System Menu) | Drag and Drop option is set to File Search then the search parameters can be entered with the File Search Drag and Drop Dialog Box. The results of a search are displayed in a File Search Window.

Opening an Archive

To open an archive you can use either the Open button on the SpeedBar or the menu command File | Open. This will bring up the Open Dialog Box from which you can select or enter the archive name. If opened the archive's contents will be displayed in a List Window. Alternatively you can use the drag and drop facilities of the File Manager and drag one or more archives into ExamineZip. As long as the Options (or System Menu) | Drag and Drop option is set to Open then all the selected archives will be opened and their contents displayed in their own windows.

If the archive to be opened contains an archive comment then this will be displayed in the Comment Window which can be opened via the Window | Comment command.

Menu Commands

ExamineZip uses context sensitive help for its menus. To obtain help on any menu option select the option with the keyboard or with the mouse keeping the left button pressed down. Press F1 and if using a mouse release the left button. Help will then be loaded displaying the relevant help topic.

Command Line

ExamineZip can use the command line to load one Zip archive as follows

```
Exam_zip.exe    c:\text\data.zip
```

Because of this facility you can associate Zip archives with ExamineZip in the File Manger and also have items in the program manager that have ExamineZip linked with a particular archive.



List Window

The List Window displays the contents of a Zip archive. Double clicking with the left mouse button or using the View command on a file name will bring up a Viewing Window displaying the contents of the file.

If the verbose option has been selected via the Options | Verbose command then each entry will be displayed as follows

```
readme.txt      19545      6621  66.1%   01/02/93   02:04:00 w----a  Deflate  1d84
```

otherwise each entry will be displayed concisely.

```
readme.txt      19545   01/02/93   02:04:00 /text/
```

For more information on the entries click on any area of interest.

To select entries for testing, extracting or viewing then use the left mouse button, together with the shift key if you want to select blocks of entries or the control key to select/ deselect additional entries in a manner identical to that used in the File Manager. When a List window is active the status bar will indicate the total number of entries.

The filename

The uncompressed size or the size of the file when it is extracted to disk.

The compressed size or the size of the file in the archive.

The percent compression. This ranges from 0% for no compression to 100% for maximum possible compression.

The date that the file was created.

The time that the file was created.

The file attributes. The symbols have the following meanings

w	Normal File
r	Read - only file
h	Hidden file
s	System file
v	Volume label
d	Subdirectory
a	File with archive bit set

The compression method used. This can be Stored, Shrunk, Reduce (1,2,3 or 4), Implode, Token, Deflate or Unknown.

The 32 bit CRC value of the file.

The directory of the file if this has been stored in the archive.

The comment associated with the file.



File Search Window

The File Search Window displays the results of a file search. The Zip archive names are listed followed by the files matching the requested file specifications. Double clicking with the left mouse button or using the View command on a file name will bring up a Viewing Window displaying the contents of the file. Doing the same on a Zip archive name will bring up a List Window listing all the files in the archive.

The entries can be selected and displayed as described in List Window.

When a File search window is active the status bar will indicate the total number of matches.



Text Search Window

The Text Search Window displays the results of a text search. The file name and Zip archive name are listed followed by the lines where matches have been found. The matches are highlighted by default as bold blue text but this can be changed via the Options | Colours command. For text files the line numbers can be optionally displayed while for binary files the hexadecimal address is shown. If you have carried out the search with the line numbers option off you do not have to repeat the search to obtain the line numbers. Just turn on the line numbers option using Options | Line Numbers. To view a file containing a match, either double click with the left mouse button or use the View command on the filename or match of interest and the internal viewer will display the file. The match selected will be immediately displayed in the Viewing Window. When a text search window is active the status bar will indicate the total number of matches.



Viewing Window

The Viewing Window displays the contents of a file in a Zip archive. Where matches have been found in the file as a result of a text search then these will be highlighted by default as bold blue text but this can be changed via the Options | Colours command. To jump between matches use the SpeedBar or the Find | Next (or the > key) and Find | Previous (or the < key) commands. For text files the line numbers can be optionally displayed while for binary files the hexadecimal address is shown.

When a viewing window is active the status bar will indicate the total number of pages produced if the file is sent to the printer.



Comment Window

The Comment Window displays the comment of the last Zip archive opened. This window can be opened by using the Window | Comment command.

SpeedBar

The SpeedBar is a row of buttons that represent mouse commands. Clicking on one of the buttons is quicker than selecting the command from the menu. If you do not want the SpeedBar present then you can hide it by using the [Options | SpeedBar](#) menu command.

Button	Action	Menu Command
Open	Opens Zip archive	File Open
File Search	Searches for files in archives	File File Search
Text Search	Searches for text in archives	File Text Search
View	Displays contents of selected item(s)	Unzip
View		
Test	Tests integrity of selected item(s)	Unzip Test
Extract	Extracts selected item(s) to disk	Unzip Extract
<<	Finds previous match	Find Previous
>>	Finds next match	Find Next
Help	Context sensitive help	none

Drag and Drop

ExamineZip can make full use of the drag and drop features of the File Manager. Select any Zip archives in the File Manager and drag and drop them into ExamineZip. Depending on how the Drag and Drop option has been set via the Options menu or if the program is iconised via the System menu the program will either open the archives, search the archives for files using the File Search Drag and Drop Dialog Box, or search the archives for text using the Text Search Drag and Drop Dialog Box.

Regular Expressions

Regular expressions are derived from the UNIX utility GREP and enable powerful text searches to be carried out using the special characters `^`, `$`, `.`, `*`, `+`, `-`, `[]`, `[^]`, `[-]`, and `\`. These characters have the following meanings:

- `^` At the beginning of a line a circumflex matches the start of a line. For instance `^while` will find all lines starting with **while**.
- `$` At the end of a line a dollar matches the end of a line. For instance `tomorrow$` will find all lines ending with **tomorrow**.
- `*` An asterisk after a character will match zero or more occurrences of that character. For instance `to*` will match **t**, **to**, and **too**.
- `+` A plus sign after a character will match one or more occurrences of that character. For instance `to+` will match **to** and **too**.
- `-` A minus sign after a character will match zero or one occurrence of that character. For instance `to-` will match **t** and **to**.
- `.` A period matches any character. For instance `p.n` will match **pan**, **pen**, **pin** and **pun**.
- `[]` Characters in square brackets will match any one of the enclosed characters. For instance `p[aei]n` will match **pan**, **pen**, **pin** but not **pun**.
- `[^]` A circumflex at the start of an expression within brackets will match any character except one of the enclosed characters. For instance `p[^aei]n` will match **pun** but not **pan**, **pen** or **pin**.
- `[-]` A hyphen within brackets indicates a range of characters. For instance `p[a-h]n` will match **pan** and **pen** but not **pin** or **pun**.
- `\` A backslash before any of the above special characters treats that character literally. For instance `\.` will be treated as a period rather than as any character.

Within square brackets the special characters `$`, `.`, `*` and `+` are treated literally while `^` is only treated as a special character if it immediately follows a `[`.

Further Examples

- `colou-r` will match **color** and **colour**.
- `p[a-k]+n` will match **pan**, **pen**, **pin** and **pain**.
- `th.*y` will match **thy**, **they** and **theoretically**

Registration Form

ExamineZip v1.01, Copyright © Aquila Software, 1994

This form can be sent to your printer using the File | Print Topic command. Users in the U. S. should ignore this form and follow the instructions in [U. S. registrations](#). For details about site licenses write to the address below for pricing details.

_____ copies of **ExamineZip** at **£10** (10 pounds sterling) each _____

Shipping and handling charge of **£2** for orders outside Europe _____

Total _____

Send your cheque/ Eurocheque/ money order for the above total, made payable to "Aquila Software", to:

Aquila Software,
P O Box 137,
Tunbridge Wells,
Kent,
TN4 0YN,
United Kingdom.

Name: _____

Address: _____

Town/City: _____

County/State: _____

Country: _____

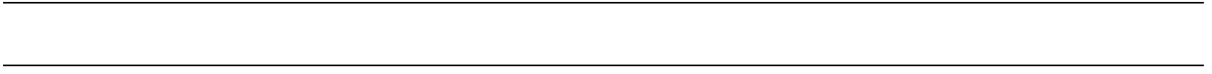
Postal/Zip Code: _____

Telephone: _____

Disk Size: [] 3.5" [] 5.25"

Where did you obtain ExamineZip?

Comments: _____



U. S. Registrations

To register ExamineZip in the U. S. please do the following:

- 1) At your local Post Office ask for an authorization to issue an International Money Order for **\$18**.
- 2) Put your own name and full address on the front of the form.
- 3) On the back of the form put the following in the Payee's box

Trevor Poile,
Aquila Software,
(EXAMINEZIP 3) **or** (EXAMINEZIP 5)
PO Box 137,
Tunbridge Wells,
Kent TN4 0YN,
United Kingdom.

The part in brackets is important as it lets me know what program you are registering and your preferred disk size. Alternatively the part in brackets can be entered as the 'purpose' on the money order.

- 4) Mail the completed form to

International Money Orders,
Box 14964,
St. Louis,
MO 63182 - 9421

The money will be converted to U. K. pounds and sent to me. On receipt of your money I will immediately send you your registered version of ExamineZip.

Write EXAMINEZIP 5 if you want to be sent your registered version on a 5.25" disk.

Write EXAMINEZIP 3 if you want to be sent your registered version on a 3.5" disk.

Error Messages

Out of memory

Too many lines for window

<File Spec> is not a valid file specification

No files found

No matches found

File does not exist

Unzip Errors

GREP errors

No string or expression given

Invalid use of '\'

Invalid use of '^'

Invalid use of '\$'

Invalid use of '*'

Invalid use of '+'

Invalid use of '-'

Invalid use of ']'

Invalid use of '[' or missing ']'

Empty set

Invalid range in set

Expression not sufficiently specific

Out of memory

Windows has no more available memory. To make more memory available either close some windows in ExamineZip or close another application.

Too many lines for window

Currently each ExamineZip window can have up to 16256 lines thus restricting the number of possible searches to be logged in one search to 16255. To overcome this problem you could restrict your search criteria either by using a more restrictive search string or by searching fewer files.

No files found

There were no files found that matched your file specification(s).

No matches found

There were no matches found between your search string or regular expression and your selected files.

<File Spec> is not a valid file specification

The file specification is not valid. You can use any DOS wildcards in your specification and you can use more than specification if it is separated by a space.

Examples

readme.txt	Search readme.txt
.	Search all files
*.txt *.doc	Search all files with the .txt and .doc extension.

File does not exist

The filename given does not exist. Retype the name or select a file from the dialog box.

Unzip Errors

These errors may arise for the following reasons.

- 1) By trying to open a file that is not a Zip archive.
- 2) By trying to open a Zip archive that spans more than one disk.
- 3) By trying to open a Zip archive that has been corrupted.
- 4) By trying to view, extract or test a file that has been encrypted or that uses an unknown compression method.

No string or expression given

No string or regular expression has been given to be searched for.

Invalid use of '\'

The character \ has been incorrectly used in the regular expression. In a regular expression \ must be followed by another character which is then treated literally. To search for \ in a regular expression you must use \\.

Examples

\	Error!
Text\	Error!
\\	will search for \.
Text\\	will search for Text\

Invalid use of '^'

The character ^ has been incorrectly used in the regular expression. In a regular expression ^ must either:

- Be the first character where it represents the start of a line
- Follow a [where it alters the meaning of the enclosed set

To search for ^ in a regular expression you must use \^.

Examples

Te^xt	Error!
^	Error!
\^	will search for ^.
^Text	will search for Text at the beginning of a line

Invalid use of '\$'

The character **\$** has been incorrectly used in the regular expression. In a regular expression **\$** must be the last character where it represents the end of a line

To search for **\$** in a regular expression you must use **\\$**.

Examples

Te\$txt	Error!
\$	Error!
\\$	will search for \$.
Text\$	will search for Text at the end of a line

Invalid use of '*'

The character * has been incorrectly used in the regular expression. To search for * in a regular expression you must use *.

Examples

*	Error!
*	will search for *.

Invalid use of '+'

The character + has been incorrectly used in the regular expression. To search for + in a regular expression you must use \+.

Examples

+	Error!
\+	will search for +.

Invalid use of '-'

The character - has been incorrectly used in the regular expression. To search for - in a regular expression you must use \-.

Examples

-	Error!
\-	will search for -.

Invalid use of ']'

The character **]** has been incorrectly used in the regular expression. In a regular expression **]** is used with **[** to define a set or range characters to be matched. To search for **]** in a regular expression you must use **\]**.

Examples

Te]xt	Error!
]	Error!
\]	will search for] .
[aei]	will match a , e or i .

Invalid use of '[' or missing ']'

The character `[` has been incorrectly used in the regular expression. In a regular expression `[` is used with `]` to define a set or range characters to be matched. To search for `[` in a regular expression you must use `\[`.

Examples

Te[xt	Error!
[Error!
\[will search for <code>[</code> .
[aei]	will match a , e or i .

Empty set

An empty set has been used in the regular expression.

Examples

<code>[]</code>	Error!
<code>[^]</code>	Error!
<code>[aei]</code>	will match a , e or i .
<code>[^aei]</code>	will match any character except a , e or i .

Invalid range in set

An invalid range has been used in the regular expression. A range must be specified in ascending order.

Examples

[z-a]	Error!
[9-0]	Error!
[a-z]	will match characters a to z
[0-9]	will match characters 0 to 9 .

Expression not sufficiently specific

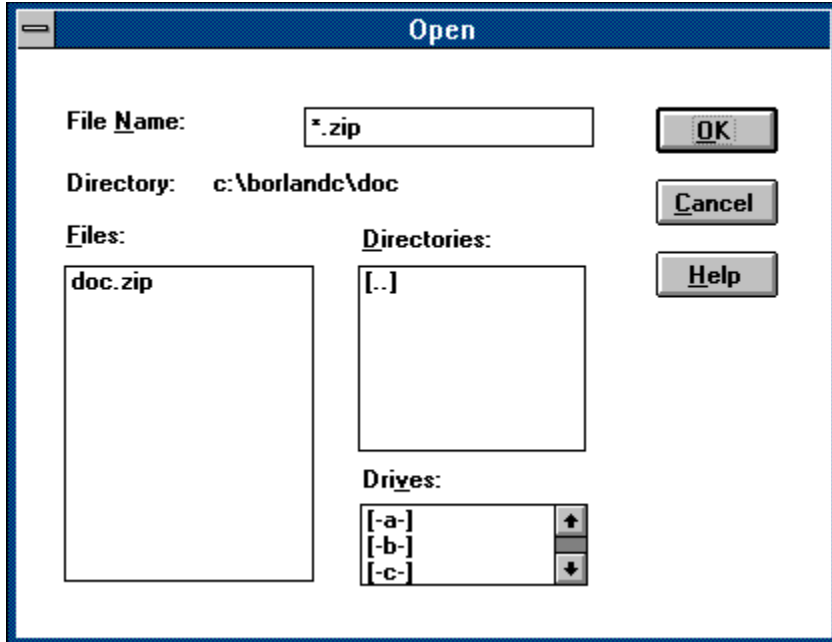
This error occurs if the regular expression given is likely to match all or most of the characters in any given file. For instance the use of `.` to match any character on its own will match everything in a file except a new line character.

Examples

<code>.</code>	Error!
<code>.+</code>	Error!
<code>.*</code>	Error!
<code>.-</code>	Error!
<code>.a</code>	OK

Open Dialog Box

This dialog box enables you to open a specified Zip file. Click on the dialog box area that you need help on.



Filename

Enter the name of the Zip file you want to open here or a valid DOS file specification the results of which will appear in the Files list box.

Files

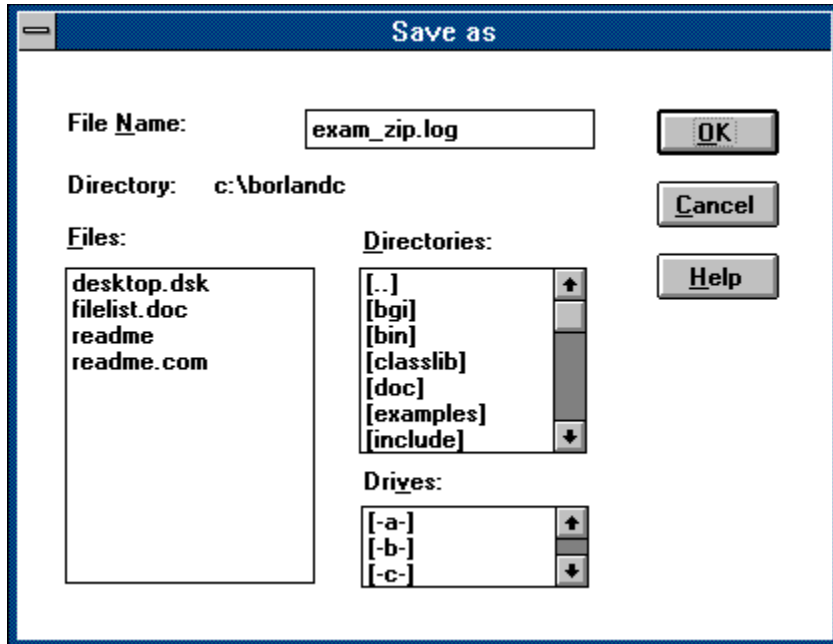
The files in the current directory are listed here. If you select a filename from this list its name will also appear in the Filename box.

OK

If the Filename box contains a valid filename then OK will tell ExamineZip to open that file.
If the Filename box contains a valid DOS file specification then OK will update the Files list.

Save As Dialog Box

This dialog box enables you to save your search data to a specified file. Click on the dialog box area that you need help on.



Filename

Enter your filename here. The default filename is EXAM_ZIP.LOG except for data in a Viewing Window.

Files

The files in the current directory are listed here. If you want to save the search data using an existing filename then you can select the filename from the list. The original file will be overwritten.

Directory

The currently selected directory is shown here.

Drives

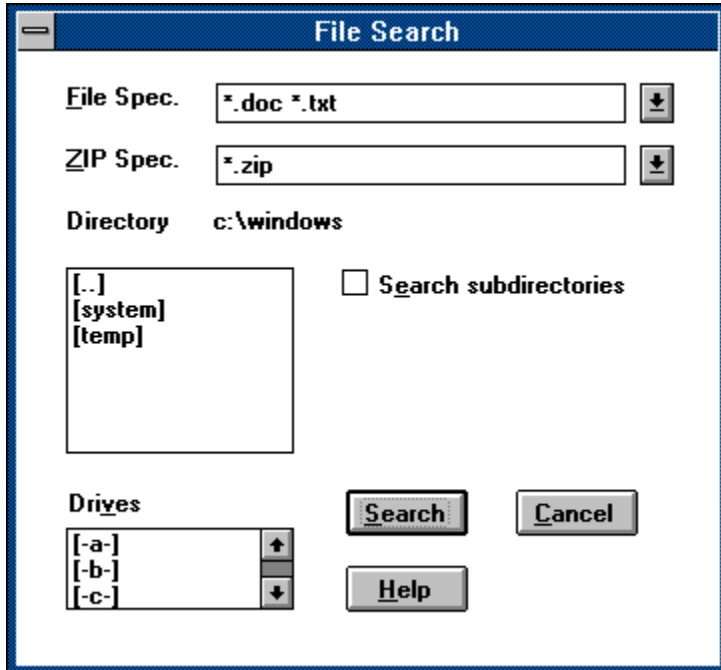
Available drives are listed here. To change drive double click on your selection.

OK

Pressing this will cause the search data to be saved using the given filename. If the filename already exists you will be asked whether you want to overwrite the original file.

File Search Dialog Box

This dialog box enables you to specify your file search parameters. For multiple disk searches use the list of drives to select your requirements while for directory searches use both the list of directories and the list of drives if necessary. For more information click on the dialog box area that you need help on.



File Spec.

Enter your file specification here. You can use any DOS wildcards in your specification and you can use more than specification if it is separated by a space. Previous file specifications can be retrieved from the history list by using the DOWN and ALT - DOWN keys or the mouse.

Examples

readme.txt

Search for readme.txt

.

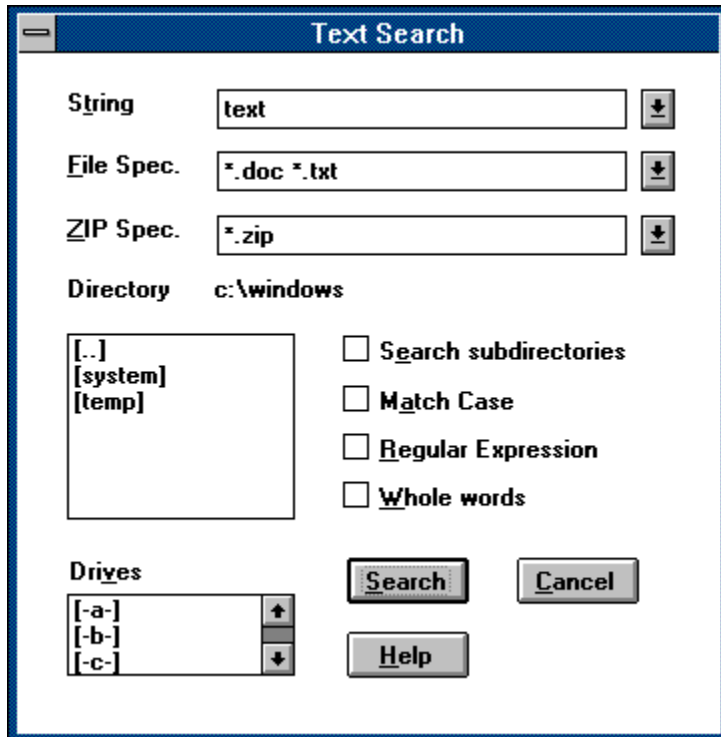
Search for all files

*.txt *.doc

Search for all files with the .txt and .doc extension.

Text Search Dialog Box

This dialog box enables you to specify your text search parameters. For multiple disk searches use the list of drives to select your requirements while for directory searches use both the list of directories and the list of drives if necessary. For more information click on the dialog box area that you need help on.



The image shows a Windows-style dialog box titled "Text Search". It contains several input fields and checkboxes. The "String" field contains "text". The "File Spec." field contains "*.doc *.txt". The "ZIP Spec." field contains "*.zip". The "Directory" field contains "c:\windows". Below this is a list box containing "[.]", "[system]", and "[temp]". To the right of this list are four checkboxes: "Search subdirectories", "Match Case", "Regular Expression", and "Whole words", all of which are unchecked. At the bottom left is a "Drives" list box containing "[-a-]", "[-b-]", and "[-c-]". At the bottom right are three buttons: "Search", "Cancel", and "Help".

Text Search

String text

File Spec. *.doc *.txt

ZIP Spec. *.zip

Directory c:\windows

[.]
[system]
[temp]

Search subdirectories

Match Case

Regular Expression

Whole words

Drives

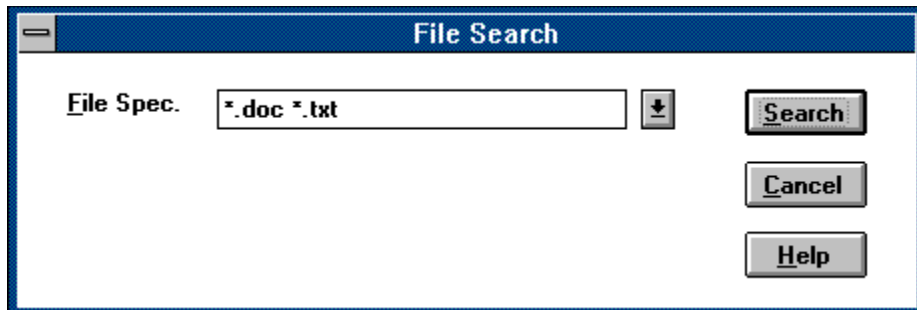
[-a-]
[-b-]
[-c-]

Search Cancel

Help

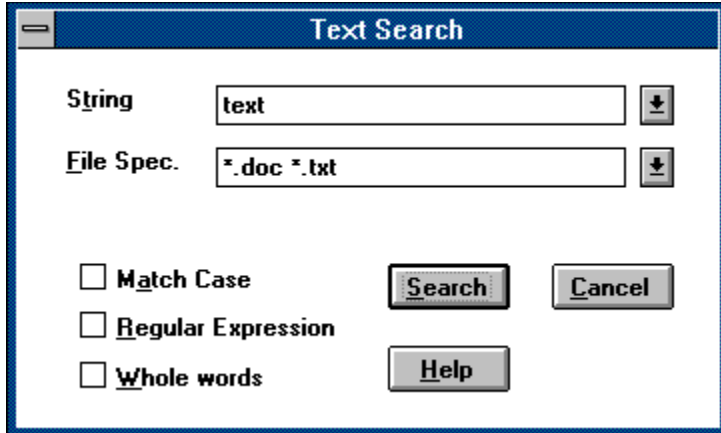
File Search Dialog Box (Drag and Drop)

This dialog box enables you to specify your file search parameters. For more information click on the dialog box area that you need help on.



Text Search Dialog Box (Drag and Drop)

This dialog box enables you to specify your text search parameters. For more information click on the dialog box area that you need help on.



The image shows a 'Text Search' dialog box with a blue title bar. It contains two text input fields: 'String' with the value 'text' and 'File Spec.' with the value '*.doc *.txt'. Below these are three checkboxes: 'Match Case', 'Regular Expression', and 'Whole words', all of which are unchecked. To the right of the checkboxes are three buttons: 'Search', 'Cancel', and 'Help'.

Field	Value
String	text
File Spec.	*.doc *.txt

Match Case

Regular Expression

Whole words

String

Enter your search string here. The string is treated as a regular expression if the Regular Expression option is selected. Previous search strings can be retrieved from the history list by using the DOWN and ALT - DOWN keys or the mouse.

File Spec.

Enter your file specification here. You can use any DOS wildcards in your specification and you can use more than specification if it is separated by a space. Previous file specifications can be retrieved from the history list by using the DOWN and ALT - DOWN keys or the mouse.

Examples

readme.txt

Search readme.txt

.

Search all files

*.txt *.doc

Search all files with the .txt and .doc extension.

ZIP Spec.

Enter your ZIP file specification here. You can use any DOS wildcards in your specification and you can use more than specification if it is separated by a space. Previous file specifications can be retrieved from the history list by using the DOWN and ALT - DOWN keys or the mouse.

Examples

text.zip	Search text.zip
.	Search all ZIP files
*.zip *.exe	Search all ZIP files with the .zip and .exe extension.

Directory/ Drives

Either the currently selected directory is shown here or if you have selected one or more drives to be searched then these will be shown.

Directories

Directories are listed here. To change your current directory double click on your selection.

Search subdirectories

Selecting this option enables the program to search all the subdirectories of the current directory. If the current directory is the root directory all directories on the disk will be searched. If this option is not selected only the current directory will be searched.

Match Case

Selecting this option makes the search case sensitive.

Regular Expression

Selecting this option makes the program treat the search string as a regular expression.

Whole words

Selecting this option makes the program search for whole words only.

Drives

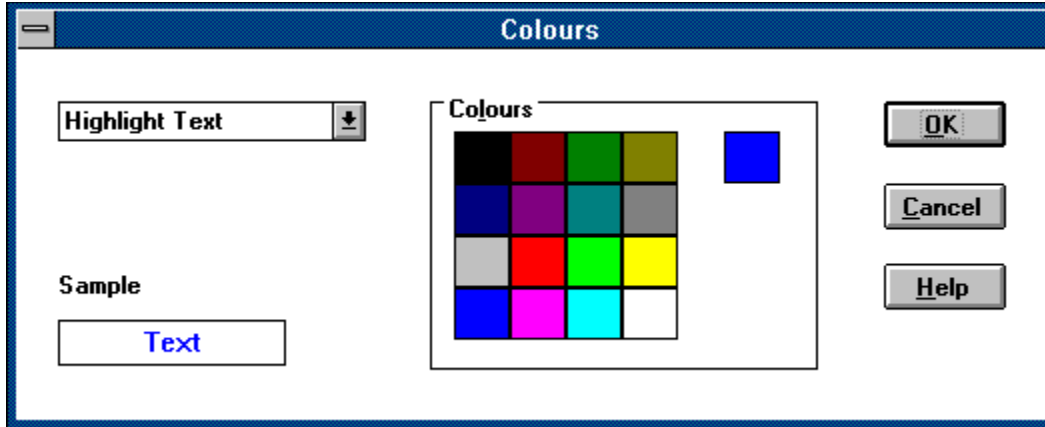
Available drives are listed here. To change drive double click on your selection. If you want to search across one or more drives then click once on the required drive. You can use the shift and control keys with the mouse to quickly select a number of drives.

Search

Pressing this starts the search.

Colour Dialog Box

This dialog box enables you to specify the colours of your matched text. Click on the dialog box area that you need help on.



Text Element

Here you can select the text element that you would like to change the colour of.

Palette

Here you can select the colour for your chosen text element by clicking once with the mouse. The colour chosen will be displayed and the sample text will change to enable you to see how your selection looks.

Colour

This displays the currently selected colour of the text element.

Sample

This displays some sample text in the colours you have selected.

OK

Pressing this causes the search text in all current windows to be changed to the new colours you have selected.

Cancel

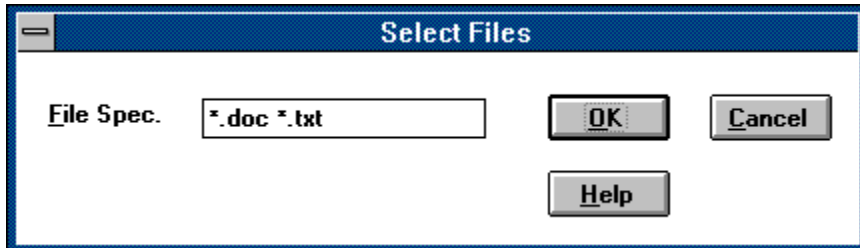
Pressing this cancels the dialog box

Help

Pressing this produces the current help screen.

Select Files Dialog Box

This dialog box enables you to select the files in the currently active List Window by entering one or more valid DOS file specifications. Click on the dialog box area that you need help on.



File Spec.

Enter your file specification here. You can use any DOS wildcards in your specification and you can use more than specification if it is separated by a space.

Examples

readme.txt	Display readme.txt if it is in the archive
.	Display all files
*.txt *.doc	Display all files with the .txt and .doc extension.

OK

Pressing this causes the List Window to be updated to list all the files that match the file specification(s) in that archive.

File | Open

The Open command opens up the Open Dialog Box where you can specify the filename and directory of the Zip file you want to open.

File | File Search

The File Search command opens up the [File Search Dialog Box](#) where you can specify your search parameters.

File | Text Search

The Text Search command opens up the Text Search Dialog Box where you can specify your search parameters.

File | Save As

The Save As command opens up the Save As Dialog Box where you specify the filename and directory for your search data to be saved to. The default filename is EXAM_ZIP.LOG except for data in a Viewing Window.

File | Print

The Print command sends the data in the active window to your printer.

File | Printer Setup

The Printer Setup command enables you to configure your printer.

File | Exit

The Exit command enables you to leave ExamineZip.

Options | Line Numbers

The Line Numbers option selects whether or not you have line numbers displayed with your search data and files displayed with the internal viewer. With binary data the hexadecimal address is displayed.

Options | Fonts

The Fonts option opens up the Fonts Dialog box where you can select both font and font size.

Options | Colours

The Colours option opens up the Colours Dialog Box where you can select both text and background colour.

Options | SpeedBar

The SpeedBar option either hides or reveals the SpeedBar.

Options | Verbose

The Verbose option effects how file entries in an archive are displayed in [List Windows](#) and [File Search Windows](#). The formats of the verbose and non-verbose (concise) displays are descibed in detail in [List Windows](#).

Options (or System Menu) | Drag and Drop | Open

The Open option enables the program to open archives when using drag and drop from the File Manager.

Options (or System Menu) | Drag and Drop | File Search

The File Search option enables the program to search for files within archives dragged and dropped from the File Manager. With this option set, dragging and dropping brings up the [File Search Drag and Drop Dialog Box](#).

Options (or System Menu) | Drag and Drop | Text Search

The Text Search option enables the program to search for text within archives dragged and dropped from the File Manager. With this option set, dragging and dropping brings up the Text Search Drag and Drop Dialog Box.

Find | Next >

The Next command moves the Viewing Window to the next match in the active file.

Find | Previous <

The Previous command moves the Viewing Window to the previous match in the active file.

Unzip | Test

The Test command tests the integrity of all the selected files in any particular archive(s).

Unzip | Extract

The Extract command extracts any selected files to disk. The files will be extracted to the same directory as the archive. If directory information has been stored in the archive then any relevant subdirectories will be created if they don't already exist.

Unzip | View

The View command will create Viewing Windows displaying the contents of the selected files. However if this command is used on an archive name in a File Search Window then a List Window displaying all the entries in that archive will be created.

Unzip | Select Files

The Select Files command enables you to change the files listed in an archive using the Select Files Dialog Box. All files are listed in an archive when it is first opened.

Select | All F5

The All command selects all the entries in the active window.

Select | None F6

The None command deselects all the entries in the active window.

Window | Cascade Shift + F5

The Cascade command resizes all the windows to the same size and arranges them in an overlapping pattern so that their title bars are visible.

Window | Tile Shift + F4

The Tile command resizes all the windows so that they are side by side and none of them overlap.

Window | Arrange Icons

The Arrange Icons command arranges all the icons into a row starting from the lower left corner.

Window | Close All

The Close All command closes all the windows currently open in the program.

Window | Comment

The Comment command displays the comment of the last Zip archive opened in the Comment Window.

Window | (List of Open Windows)

The list of open windows at the bottom of the Window menu provides another way of switching to another window from the currently active one. Just select your choice.

Help | Index **Shift + F1**

The Index command loads this help file at its contents page.

Help | Using Help

The Using Help command loads Windows own help file on how to use Help.

Help | Registration

The Registration command loads help displaying the registration information.

Help | About

The About command opens up the about dialog box which displays the version number and registration status of the program.

