

INDEX

Registration

Registration Form

Using This Help

Using Windows Help

Custom Software

Shareware

DIRTREE - A Directory Structure Viewer, (c) 1993, Custom Software Serv

File Drive Help

FILE

Index

Registration

Registration Form

Using This Help

Using Windows Help

Custom Software

Shareware

Syntax: File

File
<u>S</u> ave
<u>P</u> rint <u>P</u> rint Setup...
<u>E</u> xit...

Some menu options and/or sub-menu options may be dimmed (grayed) if the option is not legal or unavailable (such as a nonsensical command, not yet implemented, etc).

This option provides access to three sub-menus; Save, Print, Print Setup and Exit. Click on the appropriate menu item in the above sample menu for information on each of these options.

FILE|SAVE

Index

Registration

Registration Form

Using This Help

Using Windows Help

Custom Software

Shareware

Syntax: File|Save

Some menu options and/or sub-menu options may be dimmed (grayed) if the option is not legal or unavailable (such as a nonsensical command, not yet implemented, etc).

This option allows the current directory tree structure to be saved to disk in a file named "Dt.DIR" which is stored in the root directory of the current drive.

By saving your structure, DIRTREE does not have to scan the disk for the directory structure each time it is loaded.

If the structure is changed by some other means, by adding or deleting directories, the Drive|Reread Drive option should be executed to pick up the changes and this option again selected to save the new structure to the "Dt.DIR" file.

If you want DIRTREE to scan the directory each time it is loaded, or each time a new drive is selected using the Drive|Log to New

Drive option, you should insure that the "\Dt.DIR" of the target drive is deleted and that the structure is not saved using this option.

FILE|PRINT

Index

Registration

Registration Form

Using This Help

Using Windows Help

Custom Software

Shareware

Syntax: File|Print

Some menu options and/or sub-menu options may be dimmed (grayed) if the option is not legal or unavailable (such as a nonsensical command, not yet implemented, etc).

The File|Print option permits begins printing of the directory tree structure to your line printer.

Printer setup can be accomplished from the File|Print Setup option and the resulting setup dialog box.

A printing dialog box is then presented which can be used to cancel the print job before the print manager begins sending output to the printer. This dialog box closes when that event occurs.

If there is no printer defined, a message box advises of such and the print command is aborted.

FILE|PRINT SETUP

Index

Registration

Registration Form

Using This Help

Using Windows Help

Custom Software

Shareware

Syntax: File|Print Setup

Some menu options and/or sub-menu options may be dimmed (grayed) if the option is not legal or unavailable (such as a nonsensical command, not yet implemented, etc).

The File|Print Setup option permits choice of printers to use, setting of various parameters, such as portrait or landscape printing, quality of print, etc. These options remain in effect until they are changed during the current session of **DIRTREE**, or until the program is exited.

FILE|EXIT

Index

Registration

Registration Form

Using This Help

Using Windows Help

Custom Software

Shareware

Syntax: File|Exit

Some menu options and/or sub-menu options may be dimmed (grayed) if the option is not legal or unavailable (such as a nonsensical command, not yet implemented, etc).

Before terminating, the user is asked if the session should be terminated. If the cancel button is clicked, or the <escape> key is depressed, termination will not occur.

DRIVE

Index

Registration

Registration Form

Using This Help

Using Windows Help

Custom Software

Shareware

Syntax: Drive

Drive
<u>L</u> og to New Drive...
<u>R</u> eread Drive
<u>M</u> aximum Directories

Some menu options and/or sub-menu options may be dimmed (grayed) if the option is not legal or unavailable (such as a nonsensical command, not yet implemented, etc).

This option provides access to two sub-menus; Log to New Drive and Reread Drive. Click on the appropriate menu item in the above sample menu for information on each of these options.

DRIVE|LOG TO NEW DRIVE

Index

Registration

Registration Form

Using This Help

Using Windows Help

Custom Software

Shareware

Syntax: Drive|Log to New Drive

Some menu options and/or sub-menu options may be dimmed (grayed) if the option is not legal or unavailable (such as a nonsensical command, not yet implemented, etc).

This option, when selected, presents a dialog box containing the drives currently available on your system.

A drive from the box can be selected, or a new drive letter typed into the edit box.

If an illegal drive, or a drive that is not ready is chosen, an error message will appear permitting correction of the problem, or termination of the new drive dialog.

DRIVE|REREAD DRIVE

Index

Registration

Registration Form

Using This Help

Using Windows Help

Custom Software

Shareware

Syntax: Drive|Reread Drive

Some menu options and/or sub-menu options may be dimmed (grayed) if the option is not legal or unavailable (such as a nonsensical command, not yet implemented, etc).

The Drive|Reread option is useful for re-creating the directory structure when new directories are added or removed from the disk.

The File|Save option can be used to save the new directory structure if desired.

DRIVE|MAXIMUM DIRECTORIES

Index

Registration

Registration Form

Using This Help

Using Windows Help

Custom Software

Shareware

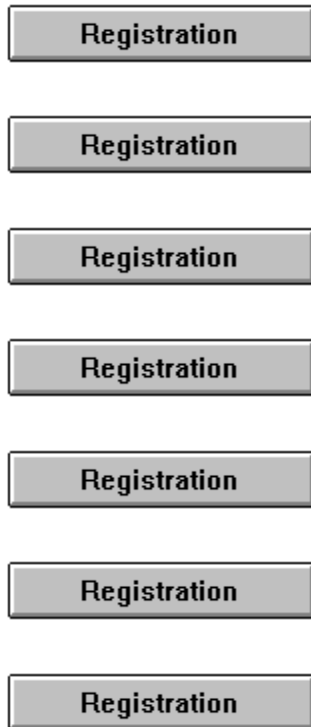
Syntax: Drive|Maximum Directories

When this option is selected, a dialog box is presented. Entering a value into the edit box will set the maximum limit on the number of directories that can be displayed. If the value entered is different than the current value, the currently selected disk is re-read using the newly chosen limit.

To preclude reading the disk again at the next execution of DIRTREE, you should save your structure using the File|Save menu option after the disk is read.

This option is available only with a registered copy of DIRTREE.

HELP



Syntax: Help



Some menu options and/or sub-menu options may be dimmed (grayed) if the option is not legal or unavailable (such as a nonsensical command, not yet implemented, etc).

This option provides access to two sub-menus; Tree Help Index and About Tree. Click on the appropriate menu item in the above sample menu for information on each of these options.

HELP|TREE HELP INDEX

Registration

Registration

Registration

Registration

Registration

Registration

Registration

Syntax: Help|Tree Help Index

Some menu options and/or sub-menu options may be dimmed (grayed) if the option is not legal or unavailable (such as a nonsensical command, not yet implemented, etc).

This option takes the user to the entry point for the DIRTREE help procedure, from which the DIRTREE help system can be navigated using facsimiles of the DIRTREE menus.

HELP|VERSION HISTORY

Registration

Registration

Registration

Registration

Registration

Registration

Registration

Syntax: Help|Version History

Some menu options and/or sub-menu options may be dimmed (grayed) if the option is not legal or unavailable (such as a nonsensical command, not yet implemented, etc).

When this option is selected, the version (revision) history of the program is displayed. To view the version history, select this topic now.

HELP|ABOUT TREE

Registration

Registration

Registration

Registration

Registration

Registration

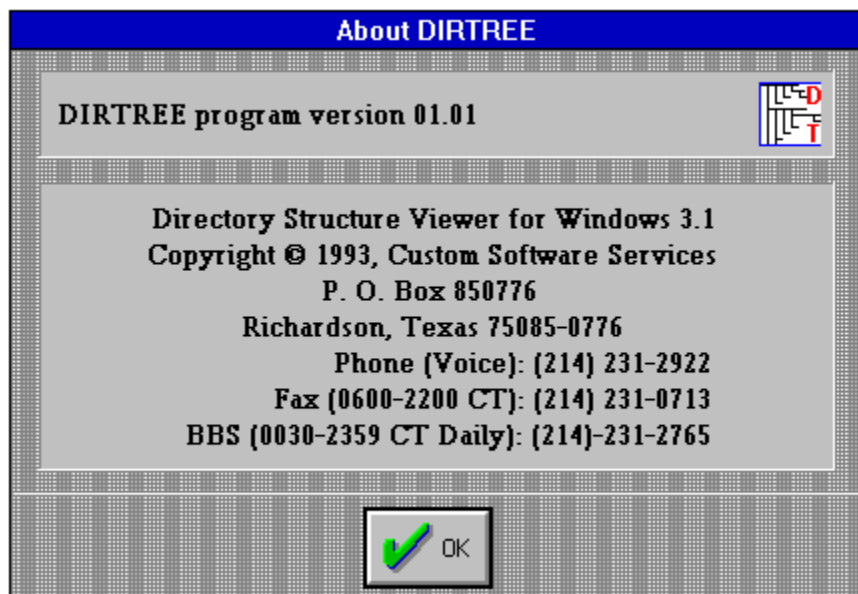
Registration

Syntax: Help|About Tree

Some menu options and/or sub-menu options may be dimmed (grayed) if the option is not legal or unavailable (such as a nonsensical command, not yet implemented, etc).

Selecting this option will display a dialog box showing copyright information, author contact information, and the version number of the program. If the program has been registered, the registree's Name, Company and address information is displayed in the box along with the Registration ID for use when consulting CSS.

The following is a facsimile of the About dialog box. The version number may be different in your version of DIRTREE.



This information is useful for registering the DIRTREE software with the copyright holder.

VERSION HISTORY

Registration

Registration

Registration

Registration

Registration

Registration

Registration

- 01/23/94 Version 01.21 -
1. Fixed system error problem generated when directories read exceeded the set limit.
 2. Corrected un-reported printing problem which caused a system fault when the number of directories exceeded the established limit.

- 09/12/93 Version 01.20 -
1. Disabled the print dialog box when the File|Print command is executed and immediately start printing the tree. The File|Print Setup still works as described in the help topic and updated the help file to reflect the change.

- 08/10/93 Version 01.11 -
1. Maintenance release.

2. Corrected date of release for version 1.10 from 7/16/93 to 08/07/93 in version history of help file.
3. Deleted "Limits" option from menu and included it in the Drive pop up menu.
4. Updated help facsimile menus to accommodate removal of "Limits" from main menu and addition of "Maximum Directories" to Drive menu popup.
5. Changed About dialog box to
6. Updated all source file headers.
7. Fixed problem of company name not being saved into About Dialog box after exit from DIRTREE.
8. Added version 1.02 release information and removed 1.02 changes from the v1.1 version history.
9. Added Borland style message boxes where possible and incorporated CSS standard dialogs as applicable.

reflect new version.

- 08/07/93 Version 01.10 -
1. Added registration lock-out and registration information to the About dialog box.
 2. Added a limit option to enable unlimited directory listings for registered copies.
 3. Updated help file to reflect limits help.
 4. Placed registration information into the About dialog box.
 5. Added version 1.02 release information to help file.

07/16/93 Version 01.02 - 1. Maintenance release. Added CSS logo box to About dialog box.

2. Disabled exit prompt.

07/03/93 Version 01.01 - 1. Released as DIRTREE due to a trademark conflict with the TREEVIEW(tm) name.

2. Help file to include version history and to reflect name change in header and text,

3. About dialog box to select new name and version number,

4. Changed ICON text to reflect name change and

5. Updated all source file headers to reflect name change.

06/01/93 Version 01.00 - 1. Formal release as TREEVIEW(tm).

Yes! I want to Register my copy of DIRTREE

(Select **File|Print Topic** to print this registration form)

Name: _____

Company: _____

Address: _____

City: _____ State: _____ Zip: _____

Phone: (_____) _____ Country: _____

Your version number? (Use the program's Help|About) _____

(____) registered licenses @ \$15.00 _____

(____) 3-1/2" HD diskettes @ \$ 5.00 _____

(____) 5-1/4" HD diskettes @ \$ 5.00 _____

Total _____

Enclose a check or money order payable to:

Custom Software Services
P.O. Box 850776
Richardson, Texas 75085-0776 USA

Voice: 214-231-2922
0713

(8am-4:30pm Mon-Fri)

Fax: 214-231-

CompuServe ID: 72223,466

BBS: 214-231-2765 (2400 bps, 8N1, 24 hrs daily)

THIS APPLICATION AND WINDOWS(tm) HELP

Registration

Registration

Registration

Registration

Product Support

THIS HELP is an "on-line" documentation supplement for **THIS CSS** program. The contents, topic names, keyword search sequences and browse commands can be used to navigate through the documentation. Depress the F1 key at any **CSS PROGRAM** help window to receive help on how to use the WINDOWS(tm) help system.

THE FOLLOWING TOPICS ARE IMPORTANT INFORMATION FOR *YOUR* PROTECTION!!!

Registration

Registration

General Interest topics:

Registration Form

Using This Help

Shareware

REGISTRATION

Registration

Registration

Registration

Registration

Product Support

This is a product of Custom Software Services designed to run under Windows(tm). It is currently being released under the **SHAREWARE** concept. However, it is anticipated that the product may soon be available as a commercial item - selling at a much greater price than the registration amount asked for under the **SHAREWARE** concept. At that time, the product will no longer be available as **SHAREWARE**.

As development continues, and until the final commercial version is fully implemented, **SHAREWARE** registered users will be notified of any significant updates which can be purchased for the fee specified on the registration form to cover the cost of the computer media and shipping and handling costs.

Registering your copy of the CSS product also entitles you to product support from CSS engineering staff. Additionally, fully registered users (those who have purchased the product computer media prior to the release date of the first commercially available product) will have the opportunity to purchase the first commercially released version for the additional cost of twice the computer media fee shown on the registration form to cover the cost of the media, shipping and handling, and additional database management costs. This is a one time offer and will not be valid for subsequent commercial releases of this software.

This product is currently distributed under the **SHAREWARE** marketing concept. It is not free software and it has not been released to the public domain. If the program doesn't meet your needs, you're under no obligation to pay for it. However, you are not licensed to use the software under the copyright laws until it is registered with the copyright holder.

You may evaluate this product for five days at no charge. If at the end of that time, you find the product to be a useful addition to your software library, you must become a registered user by sending the registration fee shown on the registration form (registration only) or a FULLY registered user by sending the registration fee and latest shareware version on disk media cost (both shown on the registration form) to the address shown on the form.

If you do not decide to register the software, you must discontinue its use and destroy all copies in your possession.

If you register, be sure to include your name and address. Also, indicate which version of the product you are currently using. Use the Help|About option from the program's Help Menu to determine the version you currently have.

Individuals who become fully registered users by submitting the registration fee and media cost (registration with disk, 3-1/2", high density, 1.44Mb, or 5-1/4" high density, 1.2Mb) will receive the latest version of this product on disk media. Please specify 3-1/2" or 5-1/4" diskettes.

You can click on the topic Registration Form or this button



to access a form that can be printed and mailed in with your registration fee or to determine current registration and media costs.

The **SHAREWARE** marketing concept can work **ONLY** if you do your **SHARE** in supporting the authors of such software by registering your copy of their packages. Keep **SHAREWARE**

alive by registering your copy of this product immediately!

THANK YOU FOR YOUR SUPPORT!

This application is a copyrighted product of Custom Software Services and all rights therein remain the sole property of Custom Software Services.

USING THIS HELP

Registration

Registration

Registration

Registration

Product Support

For information on using Help, or to find out about moving, scrolling, or sizing windows, press F1 from within any program Help window. This will take you to the Microsoft [Windows\(tm\)](#) Index to Using Help. From there, you can get to Help topics within Microsoft's Help file.

When you want to return to the program Help, close the [Windows\(tm\)](#) Help window and choose the desired topic from the program's Help [menu](#).

From within the program's help system, you can find help in the following ways:

Help Search

1. Choose the Search button (Alt+S) from the top of the Help window (just below the [menu](#) bar).
2. In the Help Search [dialog box](#), under Search For, type in the term you want Help for.
If the term is indexed in the Help, you will go to that term in the upper list box.
If the term is not indexed, you will go to the closest lexical match instead.
3. Press Enter or choose the dialog's Search button. You will see a list of 1 or more Help topics in the Topics Found list box.
4. Scroll through the list to find a specific topic, then press

Enter or choose the Go To button to jump to that Help topic.

Help Index

1. Go to the Help Index and choose the category that best describes the term of interest.
2. Then traverse Help links through the topics until you find what you are looking for. If the term is documented in the Help system, you should be able to find it within 4 or 5 topics.

CUSTOM SOFTWARE SERVICES

Using This Help

Using This Help

Using This Help

Using This Help



Custom Software Services (CSS)

P. O. Box 850776

Richardson, Texas 75085-0776

Phone: 214-231-2922 (08:00-16:30 CT, Mon-Fri)

Fax: 214-231-0713 (0600-2200 CT, daily)

BBS: 214-231-2765 (2400 bps, 8N1)

CompuServe ID: 72223,466

For prompt, complete and friendly support, registered users can contact CSS at the address and/or phone numbers shown above or through CompuServe.

CSS specializes in DOS and Windows(tm) application development. Services are also available for tutoring, training and consultation on various computer related matters.

Send for our resume' and brochure to the above address.

SHAREWARE

Shareware is a way of distributing computer software that allows you to try out a program before you purchase it. It is **NOT** free software!

REGISTERED USER

A person who submits the shareware registration fee to the copyright holder, but does not purchase the latest version of the product available on computer media as described in the registration topic of this help file.

FULLY REGISTERED USER

A person who submits the shareware registration fee to the copyright holder AND purchases the latest version of the product on computer media as described in the registration topic of this help file.

MENUS

Generally, menus appear in the program as a menu bar across the top of the display or as pop up menus which are displayed as a result of selecting an item from the menu bar. Several tiers of menus may be available to the user. A menu item suffixed with a right pointing triangle indicates another pop-up menu will be displayed when the item is chosen, while ellipses (...) indicate a dialog box results from it's selection.

DIALOG BOX

A dialog box is a pop up window that permits the user to supply additional information required by the program. The dialog box can contain edit boxes, list boxes, push buttons, radio buttons and other controls designed to assist in the input of data to the application.

OK

Clicking or selecting this button in a dialog box, accepts the data displayed by the dialog box. This may be the default values or values typed/selected by the user.

CANCEL

Clicking or selecting this button in a dialog box, rejects any changes that might have been made by the user prior to selecting cancel.

DESCRIPTION

The description usually indicates whether a group (tagged) files or a single file whose name is displayed is to be operated on.

EDIT BOX

An edit box permits entry and editing of data using the backspace and arrow keys.

LIST BOX

A list box contains a list of items which can be selected and the list scrolled using scroll bars.

PUSH BUTTON

A push button is activated by clicking on the button, or selecting it and then depressing the <ENTER> key. The button gives the illusion of being depressed when the left mouse button is held down.

RADIO BUTTON

A radio button generally is used in groups. Each button in a group is exclusive to the other buttons in the group when selected. In CSS applications, radio buttons are raised diamond shaped symbols which have a black diamond in the center when it is selected.

ATTRIBUTE BYTE

The file attribute byte indicates the attributes of the file (Volume Label, Directory, Archive, Read Only, System, or Hidden). These bits can be in any combination, however only certain ones make sense.

ARCHIVE

The archive bit of the file attribute byte is set whenever a file has been updated by copying to it, or updating it in its normal usage. Usually, the archive bit is reset during a "backup" operation.

HIDDEN

The hidden bit of the file attribute byte indicates that the file will be hidden from view when doing a directory listing with the DOS command.

READ ONLY

The read only bit of the file attribute byte, when set, will permit reading of the file only. Any attempt to write to a file so flagged will result in an error message.

SYSTEM

When the system bit of the file attribute byte is set, the file is generally used by the system. IO.SYS is a file so flagged, for example.

BACKUP

Backup is the operation of archiving files to another location for safe keeping. This is usually accomplished by some software designed for the purpose (such as DOS's BACKUP command, or a tape archiving program), which reset the archive bit to indicate it has been archived.

MASK

A name used to match against the items in the list. This mask normally contains DOS wildcard characters (* and \$).

WILDCARDS

Symbols (* and ?) used by DOS in a mask to select files.

PATH SPEC

The path spec (path specification) is the full DOS specification, identifying the location, including drive (optionally), and sub-directories of the file.

DOS

An acronym for Disk Operating System, i.e. MSDOS stands for MicroSoft Disk Operating Systems. Windows(tm) is a DOS of sorts, but still relies on the underlying DOS for most file operations.

SCROLLBAR

A bar that appears at the right side and/or bottom of some windows and in some dialog boxes. The scroll bar contains a scroll arrow at either end and a scroll box that moves within the scroll bar, reflecting your position in a file. Mouse users click the arrows or drag the scroll box to move forward or backward through the document or list. Keyboard users use the direction keys to accomplish the same thing.

WINDOWS

Windows is a registered trademark(tm) of MicroSoft Corporation.

LANDSCAPE

A term used to indicate that the printed line is parallel to the long edge of the paper.

PORTRAIT

A term used to indicate that the printed line is parallel to the short edge of the paper.

OEM

Acronym for "Original Equipment Manufacturer". This term is used to designate the original maker of the item (be it a computer or a character set font, etc.). DOS uses the OEM character set while Windows uses the ANSI character set.

ANSI

Acronym for "American National Standards Institute". This term refers to a set of standards for many things, including the Windows character set. DOS uses the OEM character set while Windows uses the ANSI character set.

NOT AVAILABLE

This option is not currently available but it is anticipated that it will be available in some future release of the program.

