

Bible Plus Help

Contents

[Overview](#)

[Application Window](#)

[File Menu](#)

[Edit Menu](#)

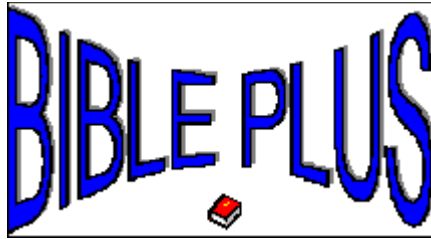
[View Menu](#)

[Essay Editor](#)

[Chapter Display](#)

[Registration](#)

(Press F1 for **How to Use Help**)



Bible Plus is a research tool for students of the Bible. It contains the complete text of the King James Version, Old and New Testaments*. You can select verses or complete chapters to read or use the [Search](#) feature to find verses based on key words, phrases, and [Boolean](#) queries.

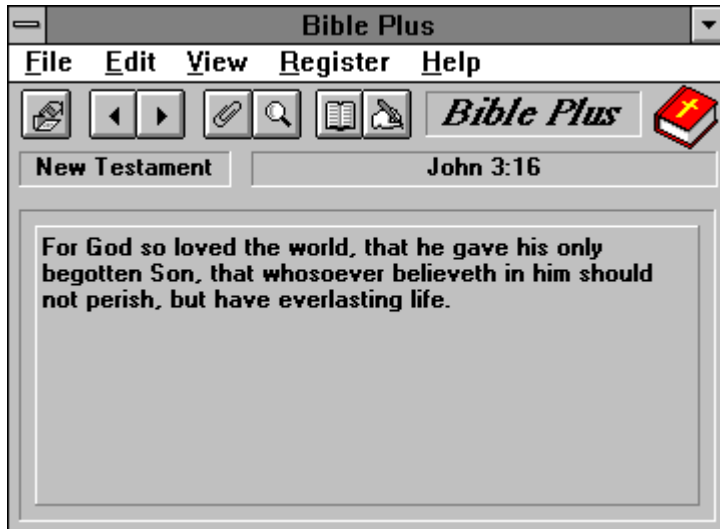
You can mark passages from the text and [Copy](#) them to the Windows clipboard to paste into your word processor.

You can [Annotate](#) verses with notes and observations and return to them later by viewing only those verses with your annotations.

You can view entire [chapters](#) of the Bible and you can use the [Essay Editor](#) to extract text from the scriptures and create your own essays, sermons, and other writings.

** The Shareware version of Bible Plus contains the New Testament only so that we can fit everything on one 1.2M diskette. When you [register](#) your copy, we will send you the full version, which contains both testaments.*

Bible Plus Application Window



For a description of the Bible Plus buttons and menus, click on them from [here](#)

Boolean queries are expressions that contain key words and the Boolean operators, AND, OR, and NOT, which must be entered in upper case. You can use the operators &, | and ! in place of the Boolean operator words. You can use parentheses to establish the precedence of the expressions. Here are examples of Boolean queries:

(Jesus AND Mary) OR Joseph
blessed AND NOT behold

File Menu



Open Book

This command displays the [Select Book](#) dialog box.



Prev Verse (PgUp)

This command displays the verse that precedes the current one. If the current verse is Genesis 1:1, which is the first verse in the Old Testament*, the command proceeds to Revelation 22:21, the last verse in the New Testament.



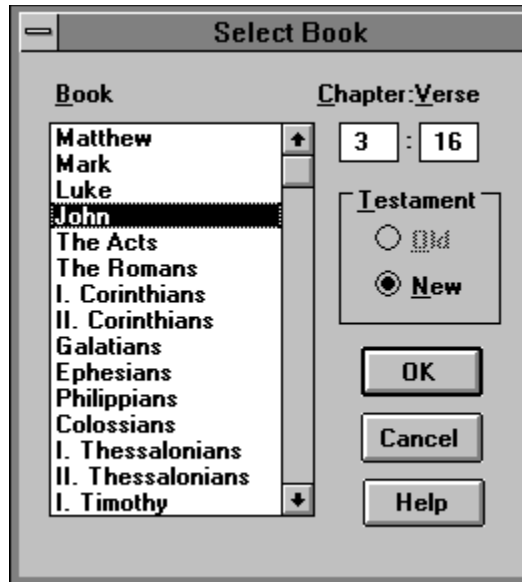
Next Verse (PgDn)

This command displays the verse that follows the current one. If the current verse is Revelation 22:21, which is the last verse in the New Testament, the command proceeds to Genesis 1:1, the first verse in the Old Testament*.

Exit (Alt+F4)

This command terminates Bible Plus.

** The Shareware version of Bible Plus contains the New Testament only so that we can fit everything on one 1.2M diskette. When you [register](#) your copy, we will send you the full version, which contains both testaments.*



Use the Select Book dialog box to select a chapter and verse from the Bible to read.

First, select the Old or New Testament* radio button. Then select a book from the listbox. Tab to the Chapter editbox and enter the chapter number. Press Tab and enter the verse number. Choose OK to display the chapter and verse.

** The Shareware version of Bible Plus contains the New Testament only so that we can fit everything on one 1.2M diskette. When you [register](#) your copy, we will send you the full version, which contains both testaments.*

Edit Menu

Copy (Ctrl+C)

Use this command to copy [selected text](#) from the current verse into the Windows clipboard.



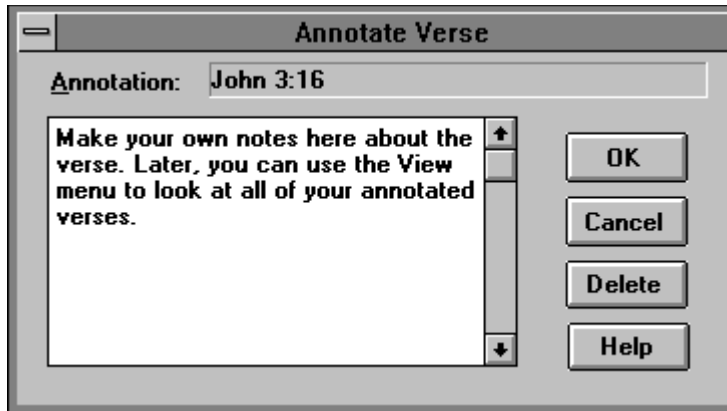
Annotate

This command displays the [Annotate Verse](#) dialog box.



Search

This command displays the [Search](#) dialog box.

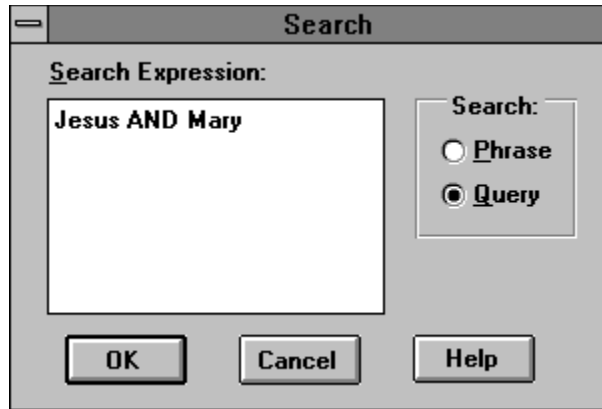


Use the Annotate dialog box to add a notation to a verse.

If a verse is already annotated, its text will contain a small paper clip icon in the lower right corner of the [application window](#). You can view the notation at any time by clicking on the paper clip.

You can delete an existing notation by choosing the Delete command.

Type any text that you want to annotate the verse. Choose OK to add the annotation to the verse.



Use the Search dialog box to search for verses. The Search dialog box displays when you choose the Search command on the Edit menu or click the Search button on the [toolbar](#).

Select a phrase or query for your search by selecting the Phrase or Query radio button. Type the [phrase](#) or [query](#) expression into the text box.

Choose OK to begin the search. If the search finds a large number of verses that match your criteria, the program will ask you if it should proceed.

When the search is done, the program displays the [Verses Found](#) dialog box.

A phrase is any sequence of words that will be in the verse or verses that you are searching for. An example of a phrase is:

for god so loved the world

You can use upper and lower case in a phrase search expression. The program makes the search without regard to upper or lower case.

A query is a [Boolean](#) expression that specifies combinations of words that constitute your search criteria.

Type all query search words in lower case. Type the Boolean operators AND, OR, and NOT in upper case or use the &, |, and ! shorthand operators.

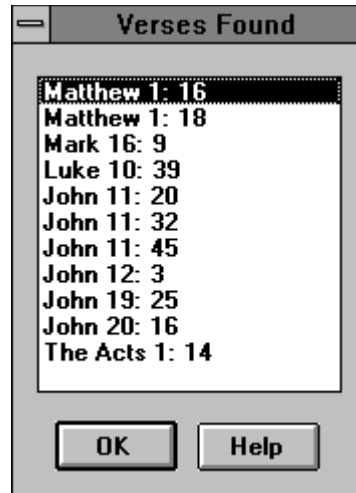
The words in a query may contain [wild card](#) characters for those words where you are unsure of the spelling.

A wild card is an asterisk at the end of a partial word in a query. The query matches any word that begins with the letters specified in the word. For example:

zeb* matches Zebadiah, Zebah, Zebaim, Zebedee, Zebina, Zeboiim, Zeboim, Zebudah, Zebul, Zebulonite, Zebulonites, and Zebulun

This feature is handy when you want all singular and plural versions of a word or all present and past tenses. For example:

lord* matches lord, lorded, lords, and lordly



The Verses Found dialog box displays the verses that match a [Search](#) operation. Select a verse on the list box, and its text is displayed in the Bible Plus [application window](#). As you move up and down the list box, the text in the application window changes to that of the verse you have selected.

View Menu



Chapter

Use this command to display the full chapter that contains the verse you are currently viewing. The command opens the [Chapter Display](#) dialog box.

Essay Editor

Use this command to open the [Essay Editor](#) window to compose an essay.

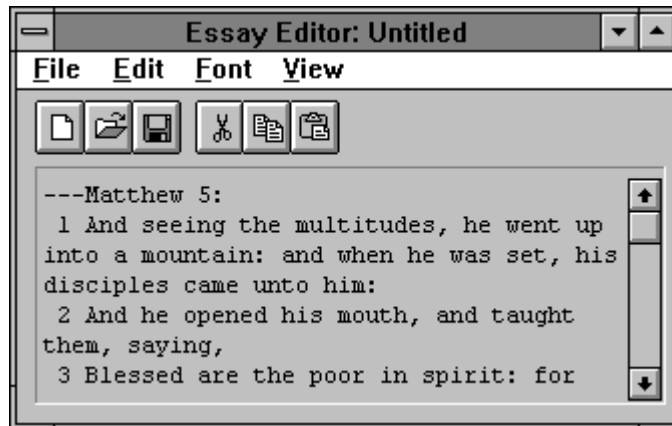
Toolbar

Use this toggle command to turn the [application window](#)'s toolbar display on and off.

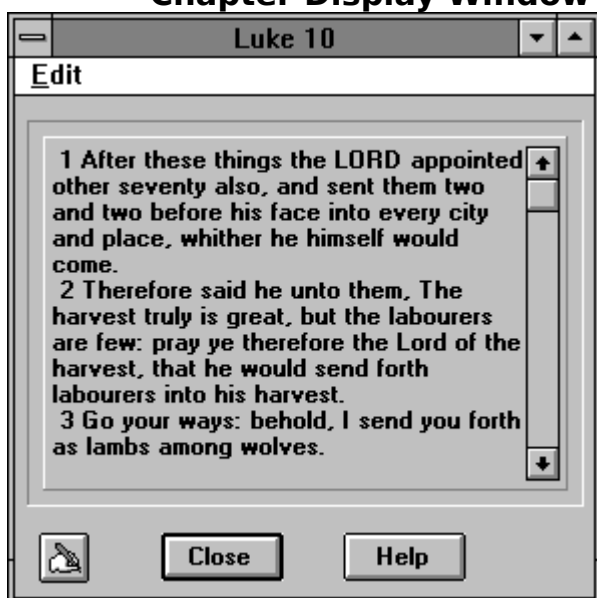
Verses with Notes

Essay Editor

Use the Essay Editor to type an [essay](#). You can import text from the [Chapter Display](#) window or from the Windows clipboard. You can use the clipboard to export the essay to a word processor or you can save the essay to a text file. You can retrieve essays that you worked on in the past and you can start new ones.



Chapter Display Window



The Chapter Display window displays the currently selected chapter. You can page and scroll through the chapter and [select text](#) for your word processor or the Bible Plus [Essay Editor](#).

To transfer text to the Essay Editor, select the text and click on the push button in the bottom left corner. This action opens the Essay Editor and transfers the selected text and a book and chapter reference to the current essay document at the current cursor position.

You can double click a verse to select the entire verse. You can also export the selected text to the Windows clipboard to use the text in your word processor. Press Ctrl+C to copy selected text to the clipboard.

Registration

Bible Plus is [shareware](#), which means that you are permitted to try it out, but do not have a license to use it routinely until you register it with its authors. To register Bible Plus:

Choose the Register command on the Bible Plus [application window](#) menu.

Fill in the information on the Registration form.

Click the Print Order Form command button to print your order.

Mail the order form along with your payment of \$29 + \$3 S/H (\$5 Canada) to:

Contact Plus Corporation
PO Box 372577
Satellite Beach, FL 32937

You can also FAX the order to (407) 799-3311 or call our voice line at (407) 799-4900. We take credit card orders by telephone.

This shareware version contains only the New Testament. By distributing Bible Plus this way, we are able to fit everything on one double-density diskette. When you register, we will send you the complete King James Version of the Old and New Testaments.

The shareware version that you are running now is fully functional. The only differences between this version and the commercial version are:

The shareware version supports only the New Testament.

The shareware version includes this help screen.

The shareware version displays a reminder to register when you first start it.

The shareware version includes the Register command on the application window and the registration form for you to fill out.

Selected text is text that you've marked as a block. You can click at either end of the text and drag the mouse to the other end, or you can hold down the Shift key and move the cursor to mark the block.

Essays are anything that you care to write. They could be notes, your journal, a sermon, even a letter to someone.

Press this button to begin creating a new essay.

Press this button to open an essay that is stored on disk.

Press this button to save your essay to disk. If you haven't given it a file name yet, the program will ask you to do so.

This button places the selected text into the clipboard and then deletes the selected text from the essay. This action is the equivalent of the Edit menu's Cut command.

This button places the selected text into the clipboard. This action is the equivalent of the Edit menu's Copy command.

This button copies the clipboard contents into the essay at the current cursor location. This action is the equivalent of the Edit menu's Paste command.

This is where you will type your essay. You can page and scroll forward and back by using the keyboard and the mouse.

Shareware is a software distribution technique that has two purposes. One is to allow users such as you to try software before you make purchasing decisions. The other is to provide an inexpensive way for software developers like us to bring our products to market. You typically acquire shareware by downloading programs from a BBS or by purchasing diskettes for nominal copy and distribution charges. When you decide to keep and use a shareware program, you are expected to pay a registration fee directly to the author. The fee is usually much less than what you would pay for a commercial product of comparable value. When you support shareware by registering, you promote the concept, which means that software developers can afford to develop programs and you can continue to get quality software at reasonable costs.

Press this button to read the next verse.

Press this button to read the previous verse

Press this button to select a book, chapter, and verse with the [Select Book](#) dialog box.

Press this button to annotate the verse with the [Annotate Verse](#) dialog box.

Press this button to search the Bible for phrases and queries with the [Search](#) dialog box.

Press this button to view the chapter in the [Chapter Display](#) window.

Press the button to write an essay with the [Essay Editor](#).

