

## INDEX

Registration

Registration Form

Using This Help

Using Windows Help

Custom Software

Shareware

DIRTREE - A Directory Structure Viewer, (c) 1993, Custom Software Serv  
File Drive Limits Help

Some menu options and/or sub-menu options may be dimmed (grayed) if the option is not legal or unavailable (such as a nonsensical command, not yet implemented, etc).

The above facsimile of the DIRTREE main menu can be used to navigate through the DIRTREE help menu by clicking on a menu option.

Doing so, will present a facsimile of a sub-menu to that option.

As in the case of the main menu, clicking items in sub-menu facsimiles, will take you to either other sub-menus, or topics relative to the sub-menu item selected.

If a vertical scroll bar is visible to the right of the tree:

1. The up and down arrow keys can be used to move the display down or up one line, respectively.
2. The Page Up and Page Down keys will move the

display down and up one screen, respectively.

3. The Home and End keys will move to the first line of the structure or the last line of the structure, respectively.

If a horizontal scroll bar is visible at the bottom of the tree the right and left arrow keys will move the tree structure right and left by one directory level, respectively.

## FILE

Index

Registration

Registration Form

Using This Help

Using Windows Help

Custom Software

Shareware

### Syntax: File

<b>File</b>
<u>S</u> ave
<u>P</u> rint... <u>P</u> rint Setup...
<u>E</u> xit

Some menu options and/or sub-menu options may be dimmed (grayed) if the option is not legal or unavailable (such as a nonsensical command, not yet implemented, etc).

This option provides access to three sub-menus; Save, Print, Print Setup and Exit. Click on the appropriate menu item in the above sample menu for information on each of these options.

## FILE|SAVE

Index

Registration

Registration Form

Using This Help

Using Windows Help

Custom Software

Shareware

Syntax: File|Save

Some menu options and/or sub-menu options may be dimmed (grayed) if the option is not legal or unavailable (such as a nonsensical command, not yet implemented, etc).

This option allows the current directory tree structure to be saved to disk in a file named "Dt.DIR" which is stored in the root directory of the current drive.

By saving your structure, DIRTREE does not have to scan the disk for the directory structure each time it is loaded.

If the structure is changed by some other means, by adding or deleting directories, the Drive|Reread Drive option should be executed to pick up the changes and this option again selected to save the new structure to the "Dt.DIR" file.

If you want DIRTREE to scan the directory each time it is loaded, or each time a new drive is selected using the Drive|Log to New

Drive option, you should insure that the "\Dt.DIR" of the target drive is deleted and that the structure is not saved using this option.

## FILE|PRINT

Index

Registration

Registration Form

Using This Help

Using Windows Help

Using This Help

Using This Help

Syntax: File|Print

Some menu options and/or sub-menu options may be dimmed (grayed) if the option is not legal or unavailable (such as a nonsensical command, not yet implemented, etc).

The File|Print option permits printing of the directory tree structure to your line printer.

The standard printer dialog box is presented permitting selection of the desired options and actions. Although the collate check box is enabled, no collating of multiple copies is performed.

Printer setup can be accomplished from this dialog box (by invoking another dialog box) or the File|Print Setup option may be selected prior to selecting the File|Print option.

If the CANCEL button is not executed when the dialog box closes, the program displays a "printing" dialog box which contains a cancel button. While this dialog box is displayed, executing the

cancel button will terminate the printing process.

## FILE|PRINT SETUP

Using This Help

Using This Help

Using This Help

Using This Help

Using This Help

Using This Help

Using This Help

Syntax: File|Print Setup

Some menu options and/or sub-menu options may be dimmed (grayed) if the option is not legal or unavailable (such as a nonsensical command, not yet implemented, etc).

The File|Print Setup option permits choice of printers to use, setting of various parameters, such as portrait or landscape printing, quality of print, etc. These options remain in effect until they are changed during the current session of **DIRTREE**, or until the program is exited.



## FILE|EXIT

Using This Help

Using This Help

Using This Help

Using This Help

Using This Help

Using This Help

Using This Help

Syntax: File|Exit

Some menu options and/or sub-menu options may be dimmed (grayed) if the option is not legal or unavailable (such as a nonsensical command, not yet implemented, etc).

Before terminating, the user is asked if the session should be terminated. If the cancel button is clicked, or the <escape> key is depressed, termination will not occur.

## DRIVE

Using This Help

Using This Help

Using This Help

Using This Help

Using This Help

Using This Help

Using This Help

Syntax: Drive

Using This Help

Some menu options and/or sub-menu options may be dimmed (grayed) if the option is not legal or unavailable (such as a nonsensical command, not yet implemented, etc).

This option provides access to two sub-menus; Log to New Drive and Reread Drive. Click on the appropriate menu item in the above sample menu for information on each of these options.

## **DRIVE|LOG TO NEW DRIVE**

Using This Help

Using This Help

Using This Help

Using This Help

Using This Help

Using This Help

Using This Help

Syntax: Drive|Log to New Drive

Some menu options and/or sub-menu options may be dimmed (grayed) if the option is not legal or unavailable (such as a nonsensical command, not yet implemented, etc).

This option, when selected, presents a dialog box containing the drives currently available on your system.

A drive from the box can be selected, or a new drive letter typed into the edit box.

If an illegal drive, or a drive that is not ready is chosen, an error message will appear permitting correction of the problem, or termination of the new drive dialog.

## **DRIVE|REREAD DRIVE**

Using This Help

Using This Help

Using This Help

Using This Help

Using This Help

Using This Help

Using This Help

Syntax: Drive|Reread Drive

Some menu options and/or sub-menu options may be dimmed (grayed) if the option is not legal or unavailable (such as a nonsensical command, not yet implemented, etc).

The Drive|Reread option is useful for re-creating the directory structure when new directories are added or removed from the disk.

The File|Save option can be used to save the new directory structure if desired.

## LIMITS

Using This Help

Using This Help

Using This Help

Using This Help

Using This Help

Using This Help

Using This Help

### Syntax: Limits

When this option is selected, a dialog box is presented. Entering a value into the edit box will set the maximum limit on the number of directories that can be displayed. If the value entered is different than the current value, the currently selected disk is re-read using the newly chosen limit.

To preclude reading the disk again at the next execution of DIRTREE, you should save your structure using the File|Save menu option after the disk is read.

This option is available on with a registered copy of DIRTREE.

## HELP

Using This Help

Using This Help

Using This Help

Using This Help

Using This Help

Using This Help

Using This Help

Syntax: Help

Help

Help Index

Version History

About DIRTREE...

Some menu options and/or sub-menu options may be dimmed (grayed) if the option is not legal or unavailable (such as a nonsensical command, not yet implemented, etc).

This option provides access to two sub-menus; Tree Help Index and About Tree. Click on the appropriate menu item in the above sample menu for information on each of these options.

## HELP|TREE HELP INDEX

Using Windows Help

Using Windows Help

Using Windows Help

Using Windows Help

Using Windows Help

Using Windows Help

Using Windows Help

Syntax: Help|Tree Help Index

Some menu options and/or sub-menu options may be dimmed (grayed) if the option is not legal or unavailable (such as a nonsensical command, not yet implemented, etc).

This option takes the user to the entry point for the DIRTREE help procedure, from which the DIRTREE help system can be navigated using facsimiles of the DIRTREE menus.

## HELP|VERSION HISTORY

Using Windows Help

Using Windows Help

Using Windows Help

Using Windows Help

Using Windows Help

Using Windows Help

Using Windows Help

Syntax: Help|Version History

Some menu options and/or sub-menu options may be dimmed (grayed) if the option is not legal or unavailable (such as a nonsensical command, not yet implemented, etc).

When this option is selected, the version (revision) history of the program is displayed. To view the version history, select this topic now.



## HELP|ABOUT TREE

Using Windows Help

Using Windows Help

Using Windows Help

Using Windows Help

Using Windows Help

Using Windows Help

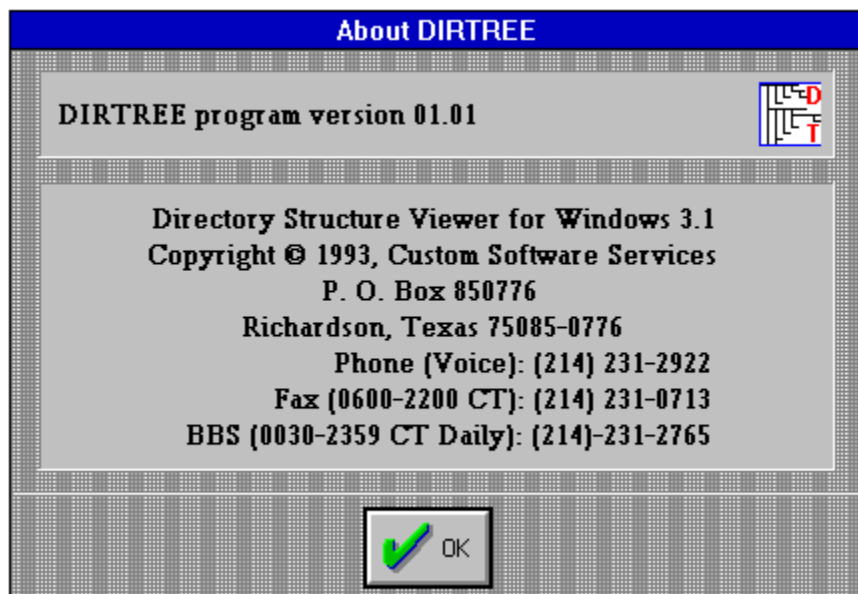
Using Windows Help

Syntax: Help|About Tree

Some menu options and/or sub-menu options may be dimmed (grayed) if the option is not legal or unavailable (such as a nonsensical command, not yet implemented, etc).

Selecting this option will display a dialog box showing copyright information, author contact information, and the version number of the program. If the program has been registered, the registree's Name, Company and address information is displayed in the box along with the Registration ID for use when consulting CSS.

The following is a facsimile of the About dialog box. The version number may be different in your version of DIRTREE.



This information is useful for registering the DIRTREE software with the copyright holder.

## VERSION HISTORY

Using Windows Help

Using Windows Help

Using Windows Help

Using Windows Help

Using Windows Help

Using Windows Help

Using Windows Help

- 07/16/93 Version 01.10 -
1. Added CSS logo oval to about dialog box.
  2. Disabled exit prompt.
  3. Added registration lock-out and registration information to the About dialog box.
  4. Added a limit option to enable unlimited directory listings for registered copies.
  5. Updated help file to reflect limits help and the about help box containing registration information.

07/03/93 Version 01.01 - Released as DIRTREE due to a trademark conflict with the TREEVIEW(tm) name.

Changed:

1. Help file to include version history and to reflect name change in

- header and text,
2. About dialog box to relect new name and version number,
  3. Changed ICON text to reflect name change and
  4. Updated all source file headers to reflect name change.

06/01/93 - Version 01.00 -

Form

# Yes! I want to Register my copy of DIRTREE!

(Select **File|Print Topic** to print this registration form)

Program  
Name: \_\_\_\_\_

Company: \_\_\_\_\_

Name: \_\_\_\_\_

Address: \_\_\_\_\_  
\_\_\_\_\_

City: \_\_\_\_\_ State: \_\_\_\_\_ Zip: \_\_\_\_\_

Phone: (\_\_\_\_) \_\_\_\_\_ Country: \_\_\_\_\_

Your Version Number? (Use the program's HELP|ABOUT)      Version

\_\_\_\_\_

3-1/2" disk (\_\_\_)      Registration only at \$15.00      \_\_\_\_\_

5-1/4 disk (\_\_\_)      Latest Version on diskette \$ 5.00

\_\_\_\_\_

Total      \_\_\_\_\_

Enclose a check or money order payable to:

**Custom Software Services**  
**P.O. Box 850776**  
**Richardson, Texas 75085-0776 USA**

Voice: 214-231-2922

(8am-4:30pm Mon-Fri)

CompuServe

ID: 72223,466

Fax: 214-231-0713

(6am-10pm Daily)

BBS: 214-231-2765

(2400 bps, 8N1, 24 hrs daily)

## **THIS APPLICATION AND WINDOWS(tm) HELP**

Using Windows Help

Using Windows Help

Using Windows Help

Using Windows Help

Product Support

**THIS HELP** is an "on-line" documentation supplement for **THIS CSS** program. The contents, topic names, keyword search sequences and browse commands can be used to navigate through the documentation. Depress the F1 key at any **CSS PROGRAM** help window to receive help on how to use the WINDOWS(tm) help system.

## **THE FOLLOWING TOPICS ARE IMPORTANT INFORMATION FOR YOUR PROTECTION!!!**

Custom Software

Custom Software

General Interest topics:

Registration Form

Using This Help

Shareware

## REGISTRATION

Custom Software

Custom Software

Custom Software

Custom Software

Product Support

This is a product of Custom Software Services designed to run under Windows(tm). It is currently being released under the **SHAREWARE** concept. However, it is anticipated that the product may soon be available as a commercial item - selling at a much greater price than the registration amount asked for under the **SHAREWARE** concept. At that time, the product will no longer be available as **SHAREWARE**.

As development continues, and until the final commercial version is fully implemented, **SHAREWARE** registered users will be notified of any significant updates which can be purchased for the fee specified on the registration form to cover the cost of the computer media and shipping and handling costs.

Registering your copy of the CSS product also entitles you to product support from CSS engineering staff. Additionally, fully registered users (those who have purchased the product computer media prior to the release date of the first commercially available product) will have the opportunity to purchase the first commercially released version for the additional cost of twice the computer media fee shown on the registration form to cover the cost of the media, shipping and handling, and additional database management costs. This is a one time offer and will not be valid for subsequent commercial releases of this software.

This product is currently distributed under the **SHAREWARE** marketing concept. It is not free software and it has not been released to the public domain. If the program doesn't meet your needs, you're under no obligation to pay for it. However, you are not licensed to use the software under the copyright laws until it is registered with the copyright holder.

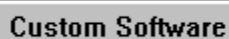
You may evaluate this product for five days at no charge. If at the end of that time, you find the product to be a useful addition to your software library, you must become a registered user by sending the registration fee shown on the registration form (registration only) or a FULLY registered user by sending the registration fee and latest shareware version on disk media cost (both shown on the registration form) to the address shown on the form.

If you do not decide to register the software, you must discontinue its use and destroy all copies in your possession.

If you register, be sure to include your name and address. Also, indicate which version of the product you are currently using. Use the Help|About option from the program's Help Menu to determine the version you currently have.

Individuals who become fully registered users by submitting the registration fee and media cost (registration with disk, 3-1/2", high density, 1.44Mb, or 5-1/4" high density, 1.2Mb) will receive the latest version of this product on disk media. Please specify 3-1/2" or 5-1/4" diskettes.

You can click on the topic Registration Form or this button

 Custom Software

to access a form that can be printed and mailed in with your registration fee or to determine current registration and media costs.

The **SHAREWARE** marketing concept can work **ONLY** if you do your **SHARE** in supporting the authors of such software by registering your copy of their packages. Keep **SHAREWARE** alive by registering your copy of this product immediately!



**THANK YOU FOR YOUR SUPPORT!**

***This application is a copyrighted product of Custom Software Services and all rights therein remain the sole property of Custom Software Services.***

## USING THIS HELP

Custom Software

Custom Software

Custom Software

Custom Software

Product Support

For information on using Help, or to find out about moving, scrolling, or sizing windows, press F1 from within any program Help window. This will take you to the Microsoft Windows(tm) Index to Using Help. From there, you can get to Help topics within Microsoft's Help file.

When you want to return to the program Help, close the Windows(tm) Help window and choose the desired topic from the program's Help menu.

From within the program's help system, you can find help in the following ways:

### Help Search

1. Choose the Search button (Alt+S) from the top of the Help window (just below the menu bar).
2. In the Help Search dialog box, under Search For, type in the term you want Help for.  
If the term is indexed in the Help, you will go to that term in the upper list box.  
If the term is not indexed, you will go to the closest lexical match instead.
3. Press Enter or choose the dialog's Search button. You will see a list of 1 or more Help topics in the Topics Found list box.
4. Scroll through the list to find a specific topic, then press

Enter or choose the Go To button to jump to that Help topic.

#### Help Index

1. Go to the Help Index and choose the category that best describes the term of interest.
2. Then traverse Help links through the topics until you find what you are looking for. If the term is documented in the Help system, you should be able to find it within 4 or 5 topics.

## **CUSTOM SOFTWARE SERVICES**

Index

Index

Index

Index



Custom Software Services (CSS)

P. O. Box 850776

Richardson, Texas 75085-0776

Phone: 214-231-2922 (08:00-16:30 CT, Mon-Fri)

Fax: 214-231-0713 (0600-2200 CT, daily)

BBS: 214-231-2765 (2400 bps, 8N1)

CompuServe ID: 72223,466

For prompt, complete and friendly support, registered users can contact CSS at the address and/or phone numbers shown above or through CompuServe.

CSS specializes in DOS and Windows(tm) application development. Services are also available for tutoring, training and consultation on various computer related matters.

Send for our resume' and brochure to the above address.

## **SHAREWARE**

Shareware is a way of distributing computer software that allows you to try out a program before you purchase it. It is **NOT** free software!

## **REGISTERED USER**

A person who submits the shareware registration fee to the copyright holder, but does not purchase the latest version of the product available on computer media as described in the registration topic of this help file.

## **FULLY REGISTERED USER**

A person who submits the shareware registration fee to the copyright holder AND purchases the latest version of the product on computer media as described in the registration topic of this help file.

## **MENUS**

Generally, menus appear in the program as a menu bar across the top of the display or as pop up menus which are displayed as a result of selecting an item from the menu bar. Several tiers of menus may be available to the user. A menu item suffixed with a right pointing triangle indicates another pop-up menu will be displayed when the item is chosen, while ellipses (...) indicate a dialog box results from it's selection.



## **DIALOG BOX**

A dialog box is a pop up window that permits the user to supply additional information required by the program. The dialog box can contain edit boxes, list boxes, push buttons, radio buttons and other controls designed to assist in the input of data to the application.

**OK**

Clicking or selecting this button in a dialog box, accepts the data displayed by the dialog box. This may be the default values or values typed/selected by the user.

**CANCEL**

Clicking or selecting this button in a dialog box, rejects any changes that might have been made by the user prior to selecting cancel.

**DESCRIPTION**

The description usually indicates whether a group (tagged) files or a single file whose name is displayed is to be operated on.

**EDIT BOX**

An edit box permits entry and editing of data using the backspace and arrow keys.

## **LIST BOX**

A list box contains a list of items which can be selected and the list scrolled using scroll bars.

## **PUSH BUTTON**

A push button is activated by clicking on the button, or selecting it and then depressing the <ENTER> key. The button gives the illusion of being depressed when the left mouse button is held down.

## **RADIO BUTTON**

A radio button generally is used in groups. Each button in a group is exclusive to the other buttons in the group when selected. In CSS applications, radio buttons are raised diamond shaped symbols which have a black diamond in the center when it is selected.



## **ATTRIBUTE BYTE**

The file attribute byte indicates the attributes of the file (Volume Label, Directory, Archive, Read Only, System, or Hidden). These bits can be in any combination, however only certain ones make sense.

## **ARCHIVE**

The archive bit of the file attribute byte is set whenever a file has been updated by copying to it, or updating it in its normal usage. Usually, the archive bit is reset during a "backup" operation.

## **HIDDEN**

The hidden bit of the file attribute byte indicates that the file will be hidden from view when doing a directory listing with the DOS command.

**READ ONLY**

The read only bit of the file attribute byte, when set, will permit reading of the file only. Any attempt to write to a file so flagged will result in an error message.

## **SYSTEM**

When the system bit of the file attribute byte is set, the file is generally used by the system. IO.SYS is a file so flagged, for example.

## **BACKUP**

Backup is the operation of archiving files to another location for safe keeping. This is usually accomplished by some software designed for the purpose (such as DOS's BACKUP command, or a tape archiving program), which reset the archive bit to indicate it has been archived.

**MASK**

A name used to match against the items in the list. This mask normally contains DOS wildcard characters (\* and \$).

## **WILDCARDS**

Symbols used by DOS to be replaced by the actual characters in a file name field.



**PATH SPEC**

The path spec (path specification) is the full DOS specification, identifying the location, including drive (optionally), and sub-directories of the file.

## **DOS**

An acronym for Disk Operating System, i.e. MSDOS stands for MicroSoft Disk Operating Systems. Windows(tm) is a DOS of sorts, but still relies on the underlying DOS for most file operations.

## **SCROLLBAR**

A bar that appears at the right side and/or bottom of some windows and in some dialog boxes. The scroll bar contains a scroll arrow at either end and a scroll box that moves within the scroll bar, reflecting your position in a file. Mouse users click the arrows or drag the scroll box to move forward or backward through the document or list. Keyboard users use the direction keys to accomplish the same thing.

## **WINDOWS**

Windows is a registered trademark(tm) of MicroSoft Corporation.

**LANDSCAPE**

A term used to indicate that the printed line is parallel to the long edge of the paper.

**PORTRAIT**

A term used to indicate that the printed line is parallel to the short edge of the paper.



