

Word Search Construction Kit Index

The Word Search Construction Kit is designed to allow you to create word search puzzles of various sizes and shapes and to print them out or import them into your favorite word processor.

Major Topics

[Copying a Puzzle](#)

[Creating a Puzzle](#)

[Deleting a Puzzle](#)

[Exporting to Desktop Publishers](#)

[Importing Puzzle Words](#)

[Modify a Puzzle](#)

[Printing a Puzzle](#)

[Puzzle Exchange](#)

[Puzzle Layouts](#)

[Puzzle Layout Exchange](#)

[Renaming a Puzzle](#)

[Saving a Puzzle to Ascii](#)

Program Windows

[Main Window](#)

[Print Options Window](#)

[Create Puzzle Window](#)

[Import Words Window](#)

[Puzzle Layout Window](#)

[Print Preview Window](#)

Menu Options

[Main Menu](#)

[Printing Menu](#)

Miscellaneous

[Upgrade Policy and Support](#)

[INI Files](#)

[Network Considerations](#)

[The Internet](#)

Insight Software Solutions Order Form



To print out the order form, select FILE | PRINT TOPIC from the menu.

Name: _____

Address: _____

Address: _____

City: _____ State/Prov: _____ Zip: _____

Country: _____

Day Phone: _____ Evening Phone: _____

Payment Method: Check Money Order Visa MasterCard Amex Discover

Card Number: _____ Exp. Date: ___/___

Signature: _____

Diskette Size: 5.25" 3.5" (Circle One)

Product Name	Quantity	US Dollars	Total
FINANCIAL SERIES			
The Mortgage Analyzer (DOS)	_____	\$30.00	_____
The Mortgage Analyzer PRO (DOS)	_____	\$50.00	_____
The Debt Analyzer (Windows)	_____	\$25.00	_____
Annuity Ace Professional (DOS)	_____	\$25.00	_____
Loan Chief Professional (DOS)	_____	\$25.00	_____
SmartSum (Windows)	_____	\$29.00	_____
HOME/OFFICE/UTILITY SERIES			
Smart Address (Windows)	_____	\$39.00	_____
Smart 'n Sticky (Windows)	_____	\$34.00	_____
SmartDoc (Windows)	_____	\$24.00	_____
SmartTracker Inventory (Windows)	_____	\$25.00	_____
SmartTracker Books (Windows)	_____	\$25.00	_____
HOBBY SERIES			
SmartTracker Videos (Windows)	_____	\$25.00	_____

SmartTracker Stamps (Windows)	_____	\$25.00	_____
SmartTracker Coins (Windows)	_____	\$25.00	_____

ENTERTAINMENT SERIES

Word Search Rampage (Windows)	_____	\$15.00	_____
Crossword Construction Kit (Windows)	_____	\$18.00	_____
Word Search Constr. Kit (Windows)	_____	\$18.00	_____

Subtotal _____

(Utah Residents Only [6.125%]) Sales Tax _____

Shipping & Handling _____

U.S. First Class Mail (Air Mail to Canada) \$3.00

U.S. Priority Mail \$5.00

INTERNATIONAL (U.S. Air Mail) \$5.00

Total Amount Enclosed _____

Please send check, money order, Visa, MasterCard, American Express or Discover order to:

(NOTE: We can only accept checks payable in U.S. Dollars drawn on a U.S. Bank)

INSIGHT SOFTWARE SOLUTIONS

P.O. Box 354

Bountiful, Utah 84011-0354

OR Phone or Fax your Visa, MasterCard, American Express or Discover order to:

Tel: 801 295-1890 Fax: 801 299-1781

COMMENTS:

Network Considerations

This program is designed to distinguish between program directories and default directories. Normally the program directory and default directory will be the same. However, on a network with multiple users, this is not always desirable.

The default directory (normally specified as a network users home or data directory) retains all user created files. This includes the INI file for maintaining such items as colors, fonts and program defaults. In addition, user created puzzles and shapes are maintained in this directory. All program dependent programs are kept in the program directory. These consist of the main executable program, help and support files.

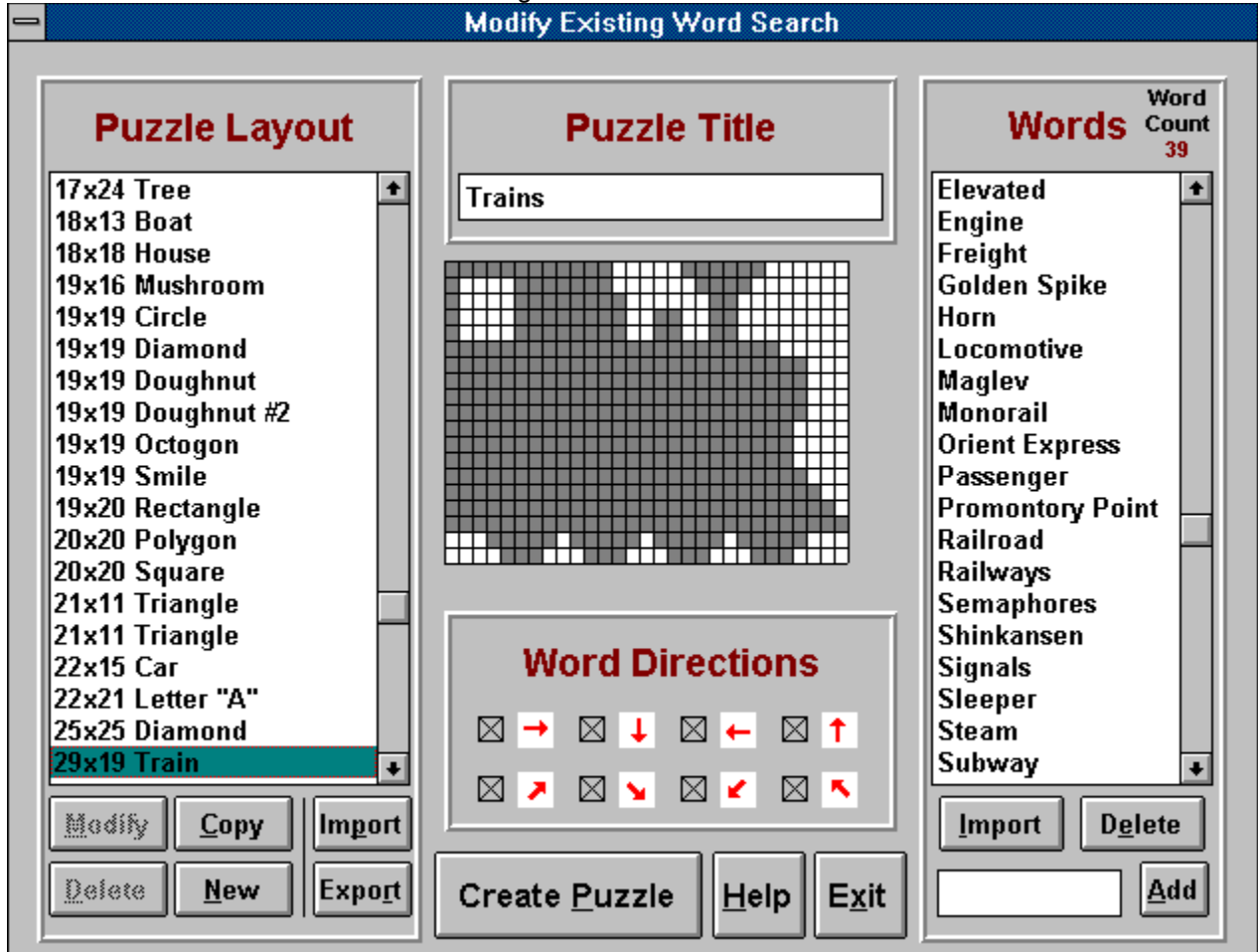
What does this all mean? It means that you can place the program in one directory on your network and by specifying different default directories for each user, you can have each user have their own personalized program configurations, created puzzles and shapes, yet only maintain one copy of the program on the network.

Please note that multi-user networking of this product requires site licensing.

Create Puzzle Window

The Create Puzzle Window allows you to create your own puzzles. Here you may specify the puzzle Title, Words, Layout (shape) and Direction of Words.

Click on an area below for information on a given item.



Puzzle Layout Window

The Puzzle Layout Window allows you to specify a shape which can later be used with a puzzle. This Window allows you to enter a Title, Dimensions and to manipulate a Grid.

Title

This is the name by which the layout will be known. This name will appear in the list box of layouts on the **Puzzle Creation Window**.

Dimensions

This allows you to specify the maximum width and height of the puzzle. The maximum sized puzzle that can be created is 30 x 30.

Grid

A Grid appears on the screen the size specified by the width and height. The grid may contain white and/or gray blocks. The gray blocks represent part of the puzzle. The white blocks represent empty space for the puzzle. Using the left mouse button toggles the color of a block between white and gray. The right mouse button can be used as a "FILL". For example, if a section is surrounded by white blocks, you may position the mouse inside that section on one of the gray blocks. Click the right mouse button and the whole inside section will become white. As this can have disastrous results if used accidentally or if a whole area was not closed off, an "Undo" button is available which will undo the last "fill".

Modify Puzzles

You may modify puzzles you have created. Example puzzles may not be modified, but can be copied. To modify a puzzle, you will need to highlight the desired puzzle in the puzzle list box. Next, click on the "Modify" button. This will take you to the Create Puzzle Window. All the puzzle information will be present and ready for you to modify.

Please note that when you save the modified puzzle, it will REPLACE the existing puzzle even if you change the name. If you desire to have a copy of the puzzle (retain the old one), this can be done. Instead of selecting the "Modify" button, you will need to choose "File" on the menu and select the "Copy" option from within it. This will bring up all the information of the highlighted puzzle in the Create Puzzle Window. However, when the modified puzzle is saved, it will be saved as a new puzzle entry.

Deleting Puzzles

You may delete puzzles you have created. Example puzzles which come with the software cannot be deleted. To delete a puzzle, you will need to highlight the desired puzzle in the puzzle list box. Next, click on the "Delete" button. You will be prompted to make sure that you want to delete the puzzle before deletion takes place.

[File](#)
[Options](#)
[Data Exchange](#)
[Help](#)

Print Options Window

The Print Options Windows allows you to customize the look of the printed puzzle. You may select portions of the puzzle to print, puzzle options and fonts for your puzzles. After doing so you may select the [View/Print](#) button which will allow you to view the puzzle, print it out or [export](#) it to a Windows Metafile.

Click on an area below for information on a given item.

The screenshot shows a window titled "Print Options" with a blue header bar. The window is divided into several sections:

- Parts To Print:** Contains four checked checkboxes: "Puzzle Title", "Puzzle Body", "Puzzle Words", and "Bonus Question". Below these is a text input field containing "Where do Polar bears g".
- Puzzle Options:** Contains a checked checkbox for "Answer Key", a "Word Columns" spinner set to "4", and three unchecked checkboxes: "Lower Case Letters", "Use Grid", and "2 Page Printout".
- Word List Options:** Contains two unchecked checkboxes: "Scramble Words" and "Partial Words". Below these are two "Show" fields, both set to "1" and labeled "Letters", and an unchecked checkbox for "Use Underscores".
- Puzzle Font:** A text input field shows "Benjamin Gothic". Below it are checkboxes for "Bold" (checked) and "Italic" (unchecked), and a "New" button.
- Word Font:** A text input field shows "Ashley". Below it are checkboxes for "Bold" (unchecked) and "Italic" (unchecked), and a "New" button.
- Title Font:** A text input field shows "DearTeacher-Normal". Below it are checkboxes for "Bold" (checked) and "Italic" (unchecked), and a "New" button.

At the bottom of the window is a row of five buttons: "View/Print", "Print To File", "Margins", "Help", and "Exit".

This is an edit box where you may type in a word that you wish to go into the list of words to be placed in the puzzle. Once you have entered the word, you may hit the <enter> key or click on the Add button and the word will be placed in the list box.

Print To Ascii File

You are given the option to send a puzzle to an Ascii file so that it can be easily incorporated into your favorite word processor. The Puzzle To Ascii File Window contains a drop down list box with a few options. These options are listed below. Once an option has been selected, pressing the OK button will allow you to save the puzzle to an Ascii file.

No Spaces, Single Space Line

The puzzle will be created where each letter is right next to the preceding letter. Each line of letter will be directly below the preceding line with no extra blank lines.

1 Space, Single Space Line

The puzzle will be created where there is one space between each letter. Each line of letter will be directly below the preceding line with no extra blank lines.

1 Space, Double Space Line

The puzzle will be created where there is one space between each letter. Each line of letter will be separated by one blank line.

Please note that most puzzle printing options have no effect with this feature. The puzzle and the word list in a single column will always be printed. Specifically, Grids, Answer Keys, Number of Columns, Scrambled Words, Partial Words, 2 Page Printout and Parts to Print do not apply to this feature.

Import Words Window

If you wish to create your word lists independently of the word search program, you may do so. Using your favorite text editor, you may create a list of words. When inside the Create Puzzle Window, press the "Import" button. This will bring up a new window with the following features.

Open File Button

This brings up the common file dialog that will allow you to select your text file that contains the words you have already created. Simply select the file, and the words are loading into a list box.

List Box

This displays all of the words which have been loaded in from the text file. Clicking on a word will select it to be used in the puzzle. Clicking on the word a second time will deselect the word.

Select All Button

This chooses all words in the list to be selected. If your text file contains the exact words you want to appear in the puzzle, then you should use this button to choose them all.

Clear Button

This deselects all the words in the list box. Use this button if you wish to start over in choosing the words you wish to use.

Ok Button

This takes all the selected words in the list box and places them in the word list of the puzzle creation window.

Cancel Button

This simply allows you to back out of the import word process if you decide not to use it.

Main Window

The Main Window consists of the menu, a list box and five buttons. These are described below.

Puzzle List Box

This contains a list of created puzzles. This will include both the example puzzles and any that you have created.

New Puzzle Button

This allows you to create a new puzzle.

Modify Button

This allows you to modify one of the puzzles in the Puzzle List Box.

Delete Button

This allows you to delete one of the puzzles in the Puzzle List Box.

View/Print Button

This allows you to view or print out one of the puzzles in the Puzzle List Box.

Exit Button

This will exit you from the program.

Upgrade Policy and Getting Support

Upgrade Policy

The code (.EXE file) for the registered and unregistered versions of the program are identical, and it is the presence of a file WSKIT2X.DLL that is supplied with the registered version that causes the program to behave in a registered fashion. The presence of the DLL will also cause any further versions of the Word Search Construction Kit that still bear the 2.x release number to behave as registered versions, wherever you obtain them from. Versions that bear the 2.x release number will generally be for minor enhancements and bug-fixes. Any release containing major new functionality will bear the release number 3.x, and an upgrade fee will likely be chargeable.

NOTE: You may not distribute copies of the licensed version of this product. You may not distribute the WSKIT2X.DLL file in any form.

We will make new versions of the Word Search Construction Kit available via the usual sources such as on-line services like CompuServe, AOL, the Internet and other BBSs and via disk vendors, shareware CD-Roms, etc.

The prime locations for new releases are as follows:

CompuServe: Library 4 of the UKSHARE forum

Internet: World Wide Web: <http://www.smartcode.com/iss>

FTP Site: <ftp://ftp.smartcode.com>

BBS: Rocky Mountain Software (801) 963-8721 Library 5 (F 5).

If you do acquire a newer version of the Word Search Construction Kit simply ensure that the WSKIT2X.DLL file you received when you registered is either in the directory that the Word Search Construction Kit program is in or is in your WINDOWS directory.

Getting Support

Before you reach for the phone, please make sure you have looked through this Help File first. If you have a question that this Help File doesn't answer, or are reporting what appears to be a bug then we will be pleased to hear from you. But if it is a question that is answered in this Help file then all we will do is point you to the relevant section, and you will just get an answer a little bit slower. This is not meant to be awkward, but we try to keep our costs down to allow us to produce this high quality software at value-for-money prices, and answering support calls is an expensive undertaking. After all, some of the major software companies either charge for support or provide it on premium-price phone numbers. We don't want to have to do that.

USA

Insight Software Solutions

P.O. Box 354

Bountiful, UT 84011-0354

USA

Phone

801 295-1890

Fax 801 299-1781
CIS E-Mail 71672,3464
Internet 71672.3464@compuserve.com

United Kingdom

Oakley Data Services,
3, Oakley Close,
Sandbach,
Cheshire CW11 9RQ
England.

Phone: (+44) (0)1270 759739
Fax: (+44) (0)1270 765272
CIS E-Mail: 74774,1347
Internet: 74774.1347@compuserve.com

Other

Please direct all correspondence directly to Insight Software Solutions in the USA.

This program is authored by: Insight Software Solutions

You may specify that the puzzle letters show up in lower case with this option. If not selected, they will be all upper case.

INI Files

A file named WSKIT.INI is created in the default directory from where the program is run. This file contains all the initialization information for the program such as colors, fonts, etc. It is in ASCII format and may be edited directly if so desired. Removal of this file will reset all values back to the program defaults the next time the program is run and the file will be recreated.

You may specify the number of columns you would like the list of words to appear in. If the words do not fit in the number of columns specified then the font size will automatically be adjusted downward in an attempt to make the words fit. If the font size becomes too small, the number of columns will incrementally be increased until all the words can fit.

Insight Software Solutions Order Form



To print out the order form, select **FILE | PRINT TOPIC** from the menu.

Name: _____

Address: _____

Address: _____

City: _____ State/Prov: _____ Zip: _____

Country: _____

Day Phone: _____ Evening Phone: _____

Payment Method: Check Money Order Visa MasterCard Amex

Card Number: _____ Exp. Date: ___/___

Signature: _____

Diskette Size: 5.25" 3.5" (Circle One)

Product Name		Quantity	UK Sterling	Total
<u>FINANCIAL SERIES</u>				
The Debt Analyzer	(Windows)	_____	£20.00	_____
<u>HOME/OFFICE/HOBBY SERIES</u>				
SmartTracker Inventory	(Windows)	_____	£20.00	_____
SmartTracker Books	(Windows)	_____	£20.00	_____
SmartTracker Videos	(Windows)	_____	£20.00	_____
SmartTracker Stamps	(Windows)	_____	£20.00	_____
SmartTracker Coins	(Windows)	_____	£20.00	_____
<u>ENTERTAINMENT SERIES</u>				
Word Search Rampage	(Windows)	_____	£15.00	_____
Crossword Construction Kit	(Windows)	_____	£15.00	_____
Word Search Constr. Kit	(Windows)	_____	£15.00	_____
			Subtotal	_____
		(UK & EEC Only [17.5%])	VAT Tax	_____
		Shipping & Handling (Add £2.00)		_____

Total Amount Enclosed _____

Please send cheque, money order, Visa, MasterCard or American Express order to:
(NOTE: We can only accept cheques payable in the UK drawn in Sterling)

OAKLEY DATA SERVICES
3 Oakley Close
Sandbach
Cheshire CW11 9RQ
England

OR Phone or Fax your Visa, MasterCard or American Express order to:

Tel: +44 (0)1270 759739 Fax: +44 (0)1270 765272

COMMENTS:

Show Samples allows you toggle off and on whether the samples puzzles that come with the program are displayed in the list box on the main window.

With this option, you may have a grid placed around all the letters in the puzzle. This may lead to better clarity for lining up words.

You may choose the font style that is to be used by the actual puzzle. Selecting the "New" button will display a list of all available True Type Fonts on your system and allow you to choose from one of them. If you simply desire to bold or italicize the font, you may click on the appropriate button instead of selecting the "New" button. The actual size of the font will be determined automatically by the program based on the size or number of letters to be placed in the puzzle.

You may choose to have the word list on the printout show up with the letters scrambled for each word. This adds one more level of difficulty to puzzle play. The words must first be unscrambled and then found in the puzzle.

You may choose to have the word list on the printout show up with only a partial list of letters for each word. This adds one more level of difficulty to puzzle play. The words must first be figured out and then found in the puzzle. The different options work and are illustrated as follows:

1. You may specify the first and last characters of the word to display.
2. The remaining letters can either be filled in with 3 dots (...) or with underscores representing the missing letters.

Examples:

If you were to select 1 first letter and 1 last letter and no underscores, then the word "friendly" would appear as "f...y".

If you were to select 1 first letter and 2 last letters and underscores, then the word "friendly" would appear as "f _ _ _ _ ly".

If the first and last letters to be shown constitutes the whole word, then the whole word is shown without any dots or underscores.

One of the exciting features of the Word Search Construction Kit is the ability to select and or design the shape of your puzzle. A list box is present which shows the available layouts. There are more than 25 layouts which come standard with the program. As you scroll through the layouts in the list box, the layout pattern is displayed in the upper left corner of the Window. It gives you a rough overview of what the puzzle will look like. Whatever layout is currently highlighted in the list box will be used when the "Create Puzzle" button is clicked on. Six buttons are available for use with the layouts. You may create a new layout from scratch by clicking on the New button. Or you may create a new layout from an existing layout by clicking on the Copy button. You may also modify an existing layout by use of the Modify button. And you may remove layouts by use of the Delete button. You can also import or export layouts. NOTE: The standard layouts that come with the program cannot be modified or deleted.

This is the name by which the puzzle will be known. It will appear in the list of puzzle names as well as on the puzzle printout.

You may create a **new layout** from scratch by clicking on the "New" button.

You may create a **new layout** from an existing layout by clicking on the "Copy" button.

You may also modify an existing layout by use of the "Modify" button. NOTE: The standard layouts that come with the program cannot be modified, but they can be copied.

You may remove layouts by use of the "Delete" button. NOTE: The standard layouts that come with the program cannot be deleted.

Layouts can be imported or exported. A special file structure (*.LAY) file is used for importing and exporting. The Word Search Construction Kit and the Crossword Construction Kit both use the same layout structure and these files are interchangeable between the two products. You can therefore create a layout design in the crossword program and use it in the word search program by exporting it first and then importing it or vice versa. This useful option does not end here. You can swap layout designs with your associates and friends who also use the construction kits! Or you can frequent our World Wide Web page on the [internet](#) that will feature layouts that you can download and load into your program.

Internet

Insight Software Solutions and Oakley Data Services are pleased to provide pages on the Internet via the World Wide Web dedicated to the puzzle enthusiast.

The address to our puzzle page is www.smartcode.com/puzzle. **Come pay us a visit!**

What will you find here?

Well, first of all, you will find crossword and word search puzzles that you can download and import directly into your programs. These puzzles are free and new offerings will be made periodically!

Second, new puzzle layouts (shapes of puzzles) will also be made available for downloading and of course these will be free also!

Third, we will post links to other web sites that deal with words, word puzzles and word games.

Fourth, you will always find the latest versions of our word game products here along with a list of features.

Fifth, you'll just have to come surf and see! The puzzle pages will be constantly evolving!

How Can I Help?

We encourage the participation of our user base to submit to us their favorite puzzles and puzzle layouts so that we can share them with our user base. Please note that we reserve the right to post or not post a submitted puzzle to our user base. Submitting of puzzles and layouts can be done by e-mailing your files directly to ISSol@ix.netcom.com. Compressing submitted files would be appreciated, but not necessary.

Our home pages on the Internet:

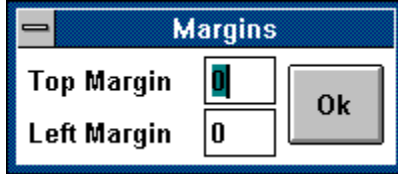
Oakley Data Services: www.smartcode.com

Insight Software Solutions: www.smartcode.com/iss

Setting Margins

You may specify left and top margins for the printed puzzle pages. This can be useful in cases where you may wish to put a puzzle in a notebook and want to punch holes in the left margin to do so.

Click on an area below for information on a given item.



The image shows a dialog box titled "Margins" with a blue header bar. Below the header, there are two rows of input fields. The first row is labeled "Top Margin" and contains a text box with the number "0" and a small vertical slider control. The second row is labeled "Left Margin" and contains a text box with the number "0". To the right of these input fields is a gray button labeled "Ok".

Margins	
Top Margin	0
Left Margin	0

Ok

Clicking on the OK button simply accepts the current margin settings and returns you to the previous Window.

You can specify a top margin to be placed on the printed puzzle sheet. The numerical value placed in this field represents roughly 1/6 of an inch. So, if you placed "6" in this field, then you would end up with around a 1 inch top margin.

You can specify a left margin to be placed on the printed puzzle sheet. The numerical value placed in this field represents roughly 1/10 of an inch. So, if you placed "5" in this field, then you would end up with around a 1/2 inch left margin.

New
Modify
Copy
Delete
Rename
View/Print
Exit

New allows you to create a new puzzle and invokes the **Create Puzzle Window**.

Modify allows you to modify an existing puzzle. The puzzle which is currently highlighted in the puzzle list box is the puzzle that will be modified.

Copy allows you to create a new puzzle, but uses the current highlighted puzzle as a starting point for creation. You may copy a puzzle by selecting FILE | COPY from the main menu.

Delete allows you to remove an existing puzzle.

Rename allows you to rename the title of an existing puzzle while all puzzle information remains the same. You may rename a puzzle by selecting FILE | RENAME from the main menu. The currently highlighted puzzle in the puzzle list box will be renamed.

View/Print takes you to the **Print Options Window**.

Exit will terminate the program.

Colors invokes a Color Selection Window. Here you may configure the different colors used throughout the different windows of the program. These include background colors, text title colors, edit boxes and buttons.

Colors
Show Samples

Contents simply invokes the help system.

About shows version number and copyright information regarding the program.

Other Products lists information about our other products and where to obtain evaluation copies.

[Contents](#)

[About](#)

[Other Products](#)

[Internet](#)

Puzzles can be imported or exported. This feature facilitates the exchange of puzzles as well as being able to archive puzzles that you want to keep around, but do not wish to appear in the puzzle list box all the time. A special file structure (*.WSK) file is used for importing and exporting. You can swap puzzles with your associates and friends who also use the Word Search Construction Kit! Or you can frequent our World Wide Web page on the [internet](#) that will feature puzzles that you can download and load into your program. You may import and export a puzzle by selecting DATA EXCHANGE from the main menu. For exporting, the currently highlighted puzzle in the puzzle list box will be used.

Import Puzzle

Export Puzzle

Puzzle Exchange via Internet

You may choose the font style that is to be used by the word list. Selecting the "New" button will display a list of all available True Type Fonts on your system and allow you to choose from one of them. If you simply desire to bold or italicize the font, you may click on the appropriate button instead of selecting the "New" button. While you can specify the font size for the word list, the actual size may end up smaller. The program will first attempt to use the size you specified. However, if it finds that it cannot fit all the words in the space it has allotted for them, then it will reduce the font size until it can make them fit.

You may choose the font style that is to be used by the title of the puzzle. Selecting the "New" button will display a list of all available True Type Fonts on your system and allow you to choose from one of them. If you simply desire to bold or italicize the font, you may click on the appropriate button instead of selecting the "New" button. The actual size of this font is determined automatically by the program.

This specifies that the puzzle is to be printed with the answers circled.

You may indicate to have the puzzle printed out on two pages. This option is only available if you are printing both the puzzle and the word list. Items appearing on the first page will be the puzzle title and the actual puzzle itself. Items appearing on the second page will be the puzzle words and bonus question. Any items not selected for printing will not appear on their respective pages.

This indicates that you want the title of the puzzle to print out on the page.

This indicates that you want the body or actual puzzle to print out on the page.

This indicates that you want the words that are to be found in the puzzle to print out on the page.

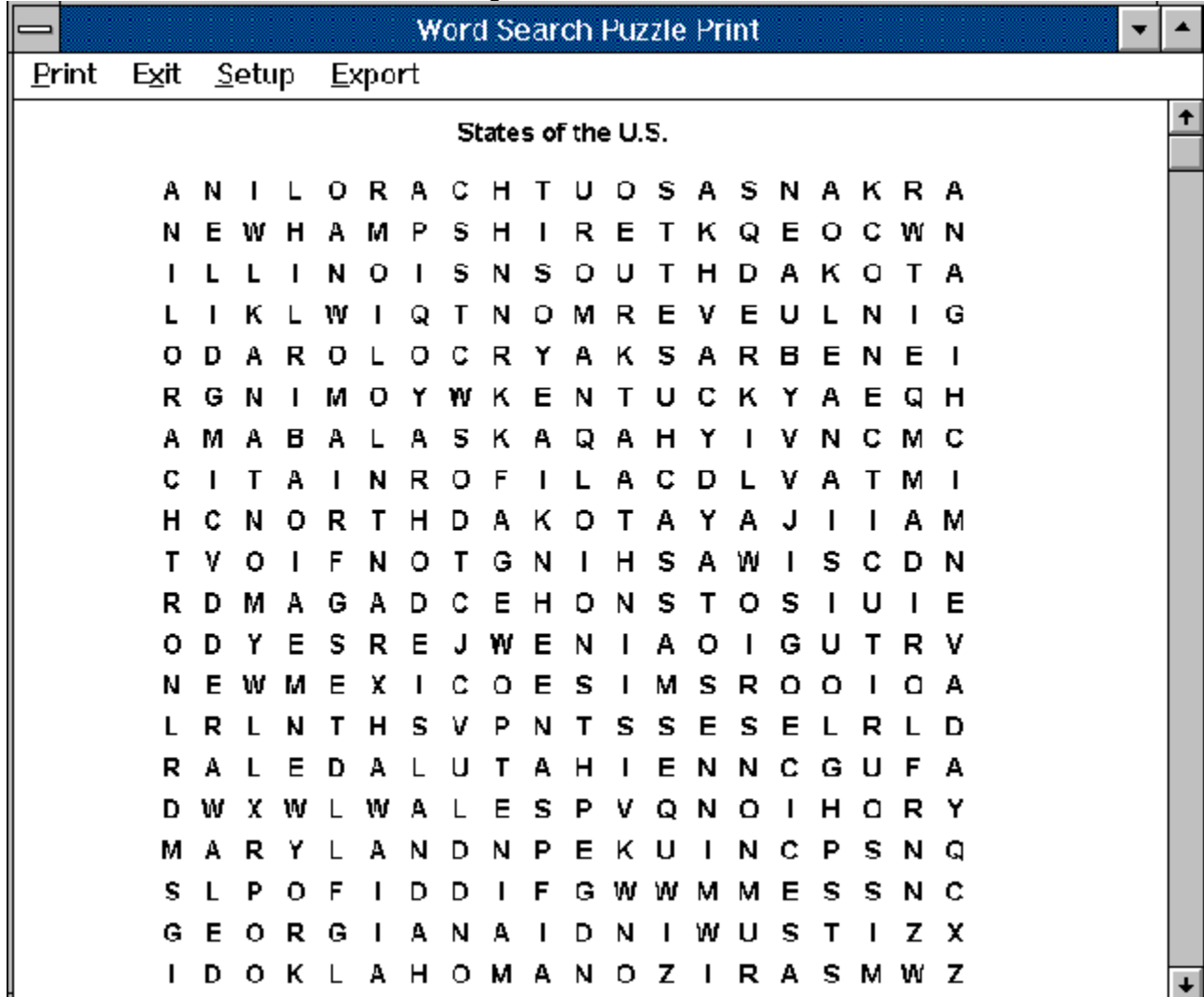
This indicates that you want the bonus question to print out on the page.

The bonus question is mainly for the educator in us. You may add a bonus question to appear at the bottom of the puzzle. For educators, this question would usually tie into the theme of the puzzle and may be worth extra credit for the student who can answer it correctly. For those who want to simply put a personalized note on their puzzles, the bonus question can be used for this.

Printing Puzzles

The View/Print Window displays the actual puzzle as it will appear on a printout. You may scroll this Window up and down to view how the puzzle will appear. From here, you may invoke any of the options on the menu bar. Including printing the puzzle or exporting it as a Windows Metafile.

Click on an area below for information on a given item



Alabama	Indiana	Nebraska	South Carolina
Alaska	Iowa	Nevada	South Dakota
Arizona	Kansas	New Hampshire	Tennessee
Arkansas	Kentucky	New Jersey	Texas
California	Louisiana	New Mexico	Utah
Colorado	Maine	New York	Vermont
Connecticut	Maryland	North Carolina	Virginia
Delaware	Massachusetts	North Dakota	Washington
Florida	Michigan	Ohio	West Virginia
Georgia	Minnesota	Oklahoma	Wisconsin
Hawaii	Mississippi	Oregon	Wyoming
Idaho	Missouri	Pennsylvania	
Illinois	Montana	Rhode Island	

Which state has the largest population?

Click on the "Add" button and the word in the edit box to the left will be placed in the list of all the words.

There are 8 possible directions for words to be placed into the puzzle. You may select or limit the word directions by simply clicking on the box next to the arrows indicating the word direction. A check mark indicates that the direction will be used.

Once all the information about the puzzle has been specified, you may select the "Create Puzzle" button to build the puzzle. The puzzle will be built and will be displayed along with a status indicating if all the words could be placed in the puzzle or not. You may then elect to save the puzzle as is or to cancel and make modifications to the puzzle data. Puzzles are generated in a random order. Therefore, you may create the puzzle, cancel it, and then recreate it without changing any of the puzzle information and the generated puzzle will be different. You may want to cancel the creation of the puzzle if not all your words fit in the puzzle or you simply want to adjust the words, layout, title or directions.

If a word does not fit, you may take several actions to try to make it fit. The easiest method is to simply choose a larger layout. If almost all of the words fit, then it is possible that a new random generation of the puzzle will make it fit. In this case you would simply press the "Create Puzzle" button once again and see if it works. You may want to try this several times. Other than these two methods, the only real solution is to remove some words or shorten some.

This is the optional bonus question which can appear on the printout.

This is the actual puzzle which can appear on the printout.

This is the list of words which can be found in the puzzle. Special options such as scrambling the words or showing only parts of the words are available.

This is the puzzle title which can appear on the printout.

It is possible to save the contents of the puzzle viewing window as a Windows Metafile. Windows Metafiles are scalable and can be easily imported into desktop publishing programs. From the Print Puzzle Viewing Window select EXPORT | METAFILE from the menu.

You may select any printer which is defined to Windows and print to that printer. Please note that selection of a printer other than the Windows default printer only applies only to the current printing session.

Selecting Exit will take you back to the [Print Options Window](#).

The Print Menu option allows you to print the puzzle page you are viewing. If you have selected the two page option, then you will be given the option to print either the current page which is visible or both pages.

The Previous Page menu option only shows up if you have selected the Two Page option and you are viewing the second page. Selecting this option will display the first page.

The Next Page menu option only shows up if you have selected the Two Page option and you are viewing the first page. Selecting this option will display the second page.

[Print](#)
[Next Page](#)
[Previous Page](#)
[Setup](#)
[Exit](#)
[Export](#)

Clicking on the "Delete" button will remove the currently highlighted word from the list of words.

You may also select the "Import" button which will allow you to import a list of words that you have already made up. The maximum number of words that can be placed in a puzzle is 325. If more words are present in the list box of words, they will be ignored at the time the puzzle is created.

A list box is present which shows all the words that you plan on placing in the puzzle.. The maximum number of words that can be placed in a puzzle is 325. If more words are present in the list box of words, they will be ignored at the time the puzzle is created.

This is the number of words that are present in the list box of words. You can know how many words you can expect to have in a puzzle at a glance.

This is a grid which shows the shape or design of the selected layout in the list box of layouts.

A list box is present which shows all the different layouts that you can choose from for your puzzle. As you select a puzzle layout, the actual design is displayed in the center of the screen in a grid. The currently highlighted puzzle is the one which will be used when the puzzle is created.

