

## ***The Runner Help Contents***

To learn how to use Help press F1

[The Main Window](#)

[Searching](#)

[Supplier Details Dialog](#)

[Options Dialog](#)

[Apache Productions Ltd](#)

[Known Problems](#)

## The Main Window

### The Toolbar



<b>Open Workspace</b>	Open a saved workspace.
<b>Save Workspace</b>	Save your current windows.
<b>Copy Window</b>	Makes a copy of the active window.
<b>Print Supplier</b>	Prints the current <u>Supplier Details</u> to the default printer
<b>Search</b>	Displays the <u>Search Dialog</u>
<b>Product Search</b>	Displays the <u>Product Search Dialog</u>
<b>Supplier Name Search</b>	Displays the <u>Supplier Name Search Dialog</u>
<b>Area Search</b>	Displays the <u>Area Search Dialog</u>
<b>Contact Search</b>	Displays the <u>Contact Name Search Dialog</u>
<b>Dial Supplier</b>	Dial the phone number of the currently selected Supplier
<b>Sound Effects</b>	Switches <u>Sound Effects</u> on and off
<b>Options Dialog</b>	Displays the <u>Options Dialog</u> Dialog Box

### The Surfboard



The Surfboard activates pop-up lists automatically, if you have the active Surfboard option check on in the Options Dialog, simply by skimming the mouse on the category headings. Allowing the mouse to move outside the pop-up lists area will result in the list disappearing.

There are eight individual categories:

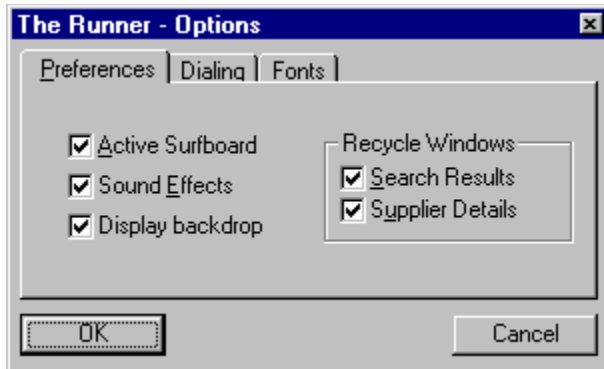
Trade Services, Props, Models/Sets & FX, Costumes & Make-up, Equipment, Performers, Transport, and Miscellaneous.

Select the subject you wish to search by double clicking on a heading. The next window to appear lists the suppliers in that heading, the Search Results Window. Select the one you want again by double clicking, to display the Supplier Details Dialog.

## Options Dialog

This dialog allows you to change the way in which The Runner works. Its is divided into 3 tabs: Preferences, Dialing and Fonts. Click on these tabs to switch between them.

### Preferences



### Active Surfboard

When the Surfboard is active you are only required you to move the mouse across it to get the Category lists to pop-up. However, when the Surfboard is NOT active you have to click on the categories.

### Sound Effects

The Runner plays a few sound effects during start up and at other times, (if you have a configured sound card). This options allows you to switch these on or off.

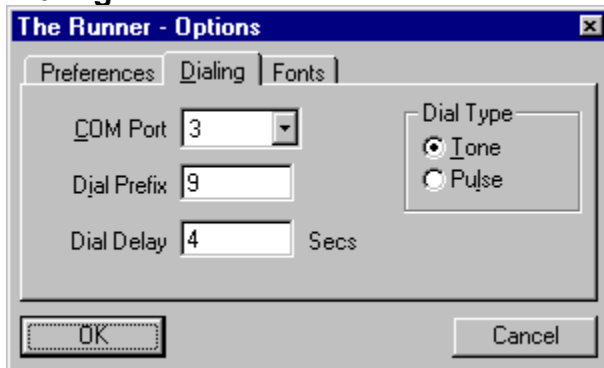
### Display Backdrop

The picture of the film set that is displayed in the main window of can be switched off with this option if, for example your machine is slow, low on memory, or you are running in a 16 colour video mode. This options will not take effect until the next time you start The Runner.

### Recycle windows

The Runner re-uses the Supplier Details Dialogs and Search Results Windows. This avoids creating many windows of the same type. Unchecking either of these options will stop The Runner from re-using that window type. Remember you can also use the Copy Window command.

## Dialing



### COM Port

The Communications port used by your modem, or none if you dont have a modem. This option must be specified before automatic dialing can be enabled.

### Dial Prefix

A number inserted in this field will be dialed before the suppliers phone number. For use when your are using an internal exchange that requires a 9 or other digits to obtain an outside line.

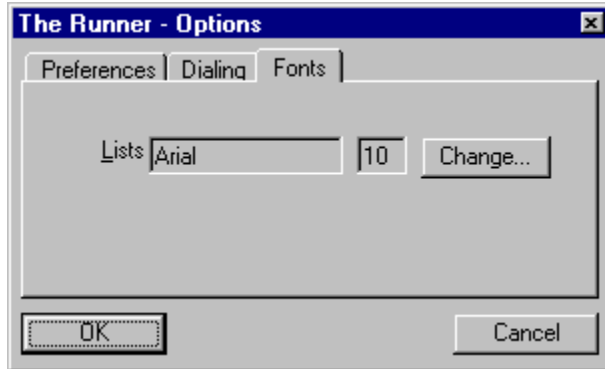
### Dial Delay

How long *The Runner* waits for you to lift the handset before it instructs your modem to hang-up. You may need to increase this if you are using a pulse dialing.

### Dial Type

This options allows you to switch between Tone and Pulse dialing. Most telephone exchanges in the UK support Tone Dialing, however some internal and overseas exchanges may not.

### Fonts



### Lists

The Categories and Search Results lists that are display may have their fonts changed. This is useful if you have a large monitor.

## **Apache Productions Ltd**

Apache Productions Ltd  
47 Whiteadder Way  
Clippers Quay  
London  
E14 9UR

Tel: 0171 - 515 4750

Fax: 0171 - 538 1257

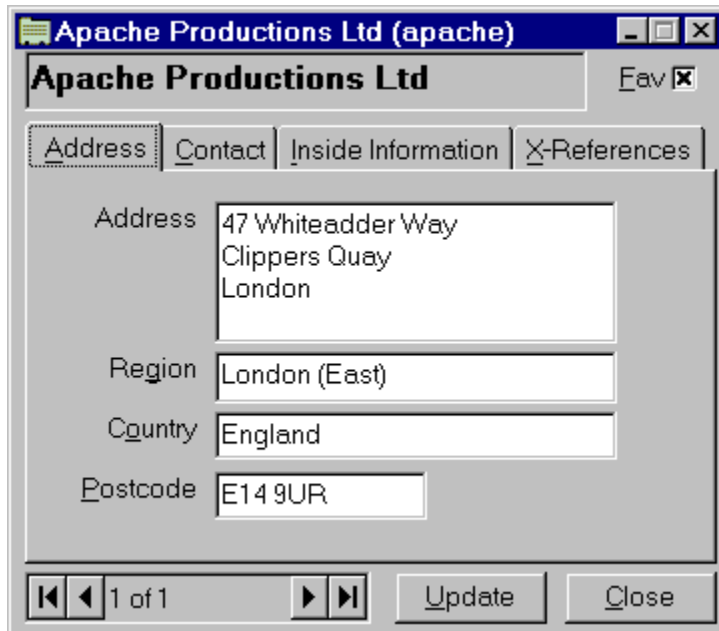
Internet page: <http://www.angel.co.uk/apache>

email: [apache@www.angel.co.uk](mailto:apache@www.angel.co.uk)

Managing Director	Steve Lewis
Technical Director	Marc Deveaux
Photography	Nick Gregan
Backdrop Illustration	Ben Wolsteholme
Research	Peter Wood

## Supplier Details Dialog

This dialog box is displayed as result of double clicking on one of the [Search Results Lists](#). It shows all the Information that The Runner holds on a supplier. Its is divided into 4 tabs: Address, Contact, Inside Information and X-Reference which are located just below the suppliers name. Click on these tabs to switch between the information panes



Apache Productions Ltd (apache) Fav

Apache Productions Ltd

Address Contact Inside Information X-References

Address 47 Whiteadder Way  
Clippers Quay  
London

Region London (East)

Country England

Postcode E14 9UR

1 of 1 Update Close

### Supplier Name

This box displays the currently selected suppliers name. If this name appears in **Maroon** then you have updated this suppliers details otherwise it will appear in **Black**.

### Fav check box

The Fav or Favourite check box allows you to specify whether a supplier appears in the Favourites list. Check it on and it will be added; check it off on it will be removed the next time you open the Favourites list in the Search Menu.

### Address tab

This tab displays a suppliers address details.

### Contact tab

This tab displays contact information for a supplier including Contact Name, Contact Title, Suppliers telephone number, Fax number and email address. The Dial button will instruct your modem to dial the suppliers telephone number for you. The Dial option have to be configured in the [Dial Options Dialog](#) before the Dial button will be enabled.

### Inside Information tab

This tab displays Apache Productions Ltd notes on a supplier. You may find this a useful place to add your own notes to The Runners.

### X-Reference tab

This tabs shows which categories and search keys a supplier is listed under. Double clicking on one of the items in this list box will display a [Search Results Window](#) window with all of the suppliers in that category or with that search key.

### Data Scroll bar

Scrolls through the data set associated with the [Search Results Window](#) that lead you to this supplier.

### Update button

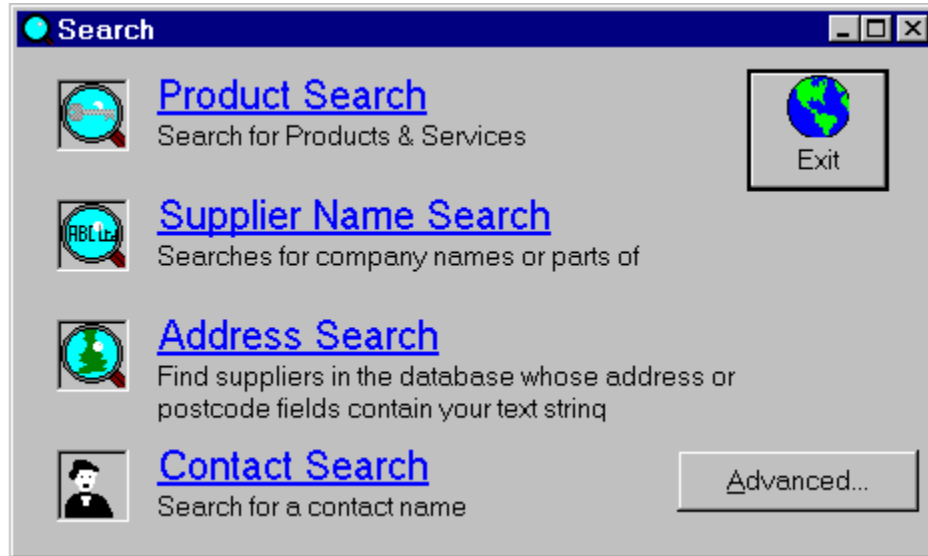
Saves any changes you have made to this suppliers details.

**Close button**

Closes the supplier details window. If you have changed any of the fields you will be prompted on whether the details should be saved.

## Searching

*The Runner* offers five search options:



### Product Search

Displays the Product Search Dialog

### Supplier Name Search

Displays the Text Search Dialog to search for a suppliers name.

### Address Search

Displays the Text Search Dialog to search for an address.

### Contact Search

Displays the Text Search Dialog to search for a Contact.

### Advanced Search

Displays the Advanced Search Dialog.

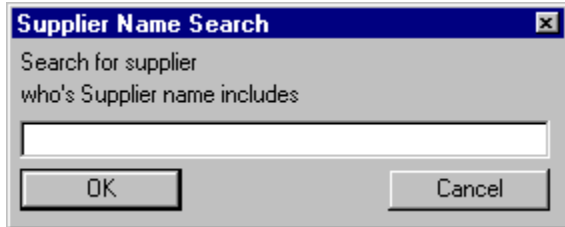
All of the above methods will display the Search Results Window.



## Text Search Dialogs

This Dialog is used by several of the Search Routines. Enter a word, or part of a word, in the input field and press the OK button. The text entered is not case sensitive. The text is searched for in all designated fields.

**Tip** Use a small search text as searching for Apache Productions Ltd will result in only one match but searching for just Product will yield more possibilities.



### Supplier Name

Search for any supplier whos name contains your search text

### Address Search

Search for any supplier whos Address, Postcode, Country or Region contains your search text.

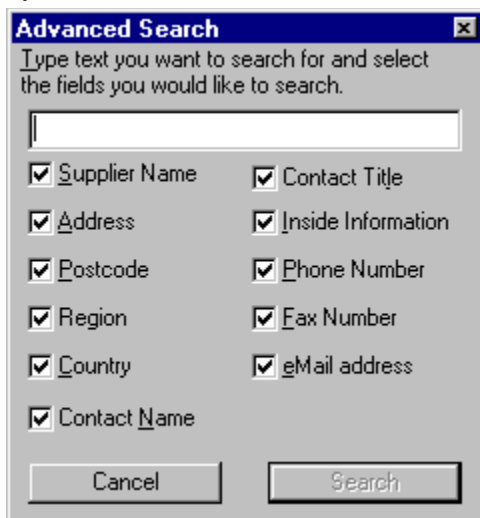
### Contact Name Search

Search for any supplier whos Contact Name or Contact Title contains your search text

Pressing OK will result in short delay and the display of a [Search Results Window](#)

## Advanced Search Dialog

This dialog operates in the same way as the Text Search Dialogs but allows you to select which fields you wish to search.

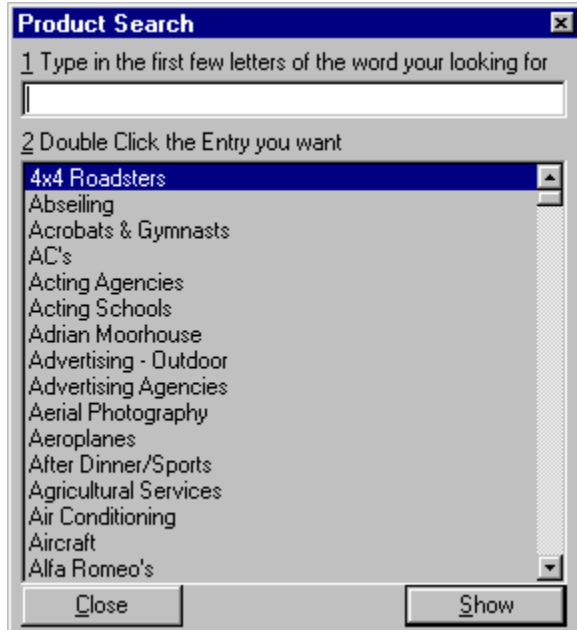


Pressing Search will result in short delay and the display of a [Search Results Window](#)

## Product Search Dialog

### The power behind The Runner

This dialog displays all of The Runners categories for you to browse. Just double click on the category you are looking for and the results will be displayed.



## Known Problems

As of 02/11/96

Description **Setup is unable to update certain DLLs in the windows and Windows\system directories and prompts for abort, retry, or ignore.**

Status Resolved

Resolution Ensure all programs are closed when you run setup. This includes the **Microsoft Office Shortcut Bar**.

Description **The backdrop looks awful when running in 16 colour mode.**

Status Resolved.

Resolution Use Windows Setup to select a video driver, or mode, that support 256 or more colours. (or Control Panel / Display / Settings under Windows 95 and NT).  
Use the options dialog to switch the backdrop option to off (unchecked).

Description **The Runner is slow on a machine with less than 6MB of RAM.**

Status The Runner system requirements specify 6MB of RAM.

Resolution One or more of the following may help:  
Add more memory to your machine.  
Use the options dialog to switch the backdrop option to off (unchecked).  
Turn off Smartdrive in the c:\autoexec.bat file with a REM statement.  
Turn off any large wallpapers in Control Panel. (these can use over 1MB of RAM).

Description **Under Windows NT 3.51 The Runner does not terminate correctly (shutdown reports that it is still running).**

Status Under investigation by a third party supplier. Only occurs after using the Print or Print Preview commands.

Resolution In Program Manager use the File/Properties menu to set the separate subsystem option to ON for The Runner icon.

Description **Under Windows NT 4 beta 1 (build 1234) The Runner does not load**

Status Closed.

Resolution Tests with Window NT 4 beta 2 have shown that it has been resolved in this next build. Tests with the final version on NT 4 have also proved positive.

Please report any other problems you may find to [Apache Productions Ltd.](#)

## Search Results Window

This window is used to display the final results of any search. Double clicking on a supplier will display the Supplier Details Window.



