

# WinImage

Version 1.00



© 1993 Gilles Vollant

Portion © Christoph H. Hochstätter

Portion © François Liger

Portion © Microsoft

WinImage is a disk image management utility.

[What is a disk image file](#)

[Using WinImage](#)

[File Menu](#)

[Option Menu](#)

[WinImage future](#)

[Acknowledgements](#)

[Registering](#)

## What is a disk image ?

WinImage is a disk image management utility. An image is a file which contain all the floppy data (file, FATs, boot sector, directory...).

Making an image from a floppy and writing on another, we make an exact copy (as with the Dos DiskCopy command). We can read a floppy and write the image on hard disk. The day after, without using floppy, we can extract a file from the image. The week after, we can write the image on 2 new disk without original, (we create 2 exact copy of it).

We can also create image with WinImage. If we want put 5 files (which take 1.3 Mb) on a 3"1/2 HD unformatted floppy. We create an empty 1.44 Mb image, we inject the 5 files on it from hard disk (very fast) and in one operation, we format the floppy and write the image on it.

WinImage can format and use very large capacity no-standard disk. (3"1/2 HD 1.72 Mb and 5"1/4 HD 1.44 Mb). For use them, tou must load FdRead, a shareware Christoph H. Hochstätter's TSR (Terminate and Stay Resident). You find it with the FdFormat utility. I think you must look at it. You don't need this TSR if you use only standard format with WinImage.

You can load an image reading a floppy, en reading an image file, or creating an empty image.

You can extract the files in the disk which you make an image on any device. (hard disk, network unit or... floppy).

You can also add file in image.

The image can be copying on a floppy (which must having the same format) or saving in a file.

An image file contain all the floppy sector. If it's not full, you can truncate the file.

## Using WinImage

The files the image contain are listed in the WinImage window. The directory haven't size display. You can go in a directory double-clicking on it.

## **File Menu**

### **New**

Create new image

File New create and new empty image. You must choose a format (by example 1.44 Mb).

### **Open**

Open an image file.

### **Save**

Save current image.

### **Save as**

Save current image with a new name.

### **Close image**

Close current image

### **Use drive A: or B:**

Use device A: for read and write floppy

On a computer with 2 floppy, with this command you choose the unit you want use for reading or writing disk.

### **Read disk**

Read a floppy and put his image in memory.

### **Compare disk**

Compare current image with a floppy.

### **Write disk**

Write current image on a floppy.

### **Format and write disk**

Format a floppy and write current image on it.

### **Create directory**

Create directory in current image.

### **Select**

Select files in current image.

**Inject**

Inject files in current image.

**Extract**

Extract files from current image.

If there is no file selected, WinImage extract all file from image, else it extract only selected file.

**Extract as**

Specifie path and extract files from current image. (a dialog box with some Preference fields is showed).

If there is no file selected, WinImage extract all file from image, else it extract only selected file.

**Quit**

Quit WinImage.

## Option Menu

**Sort by Name**

**Sort by Type**

**Sort by Size**

**Sort by Date**

These options are used for showing file of the image.

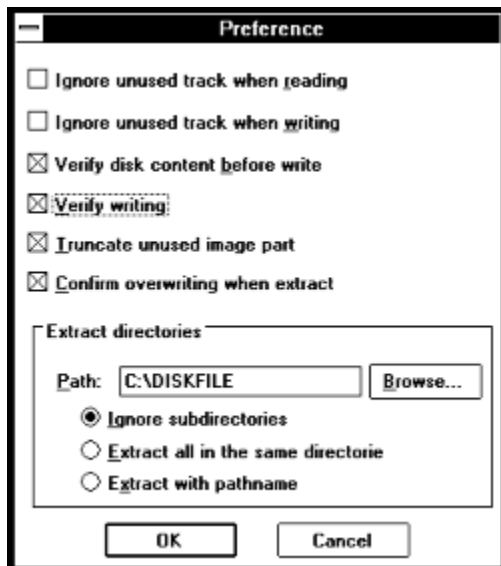
## Font

Change current font (used for showing file of the image).

## Preference

Set WinImage Option

You see this dialog box :



*Ignore unused track when reading* : if this option is checked, when reading (or compare) a floppy (which isn't full), WinImage ignore unused track.

*Ignore unused track when writing* : if this option is checked, when writing on floppy an image (which isn't full), WinImage ignore unused track.

*Verify disk content before write* : if this option is checked, WinImage ask confirmation before writing on a disk which contain data.

*Verify writing* : if this option is checked, WinImage verify writing on floppy. That take more time, but you are sure this disk is readable.

*Truncate unused image part* : if this option is checked, when writing an image file (which isn't full), WinImage optimise the size of the image.

*Confirm overwriting when extract* : if this option is checked, if extracting risk overwrite a file, , WinImage

ask confirmation.

*Path* : You specify here where extract must copy the file from the image.

*Ignore subdirectories* : WinImage ignore subdirectories to ask to extract.

*Extract all in the same directorie* : WinImage extract files in a subdirectory of the image in the Path location.

*Extract with pathname* : WinImage extract files in a subdirectory of the image in a subdirectori of the Path location.

## **Evolution de WinImage**

May 1993 : Version 1.0

There is a 32 bits version for March 1993 Beta of Windows NT. It can't use large capacity floppy (there is not NT version of FDREAD), but reading or writing disk ABSOLUTELY DON'T slow working with another application.

I hope you send me feedback about WinImage.



## Acknowledgements

Building a user-friendly software need help of a lot of people.

Dos utility FdFormat and Wimage from *Christoph H. Hochstätter* give me some ideas which make WinImage. Without FdFormat source, Without it's source code, I can't do formating large format floppy.

Building new icons and bitmap, *François Liger* give WinImage a better look. Giving me some piece of code, he save a lot of my time.

Correcting the french documentation, *Monique Vollant* permit it hanving a better syntax. (the english doc probably need to be corrected).

Some ideas are coming from betat-teser. I thank *Joël Demay*, *Michel Nedelec*, *Fabrice Letard* and *Thierry Halin*.

## **Registering**

WinImage is a shareware. You can copy, distribute and try it. If you use it, you can buy the licence.

The licence price is **100 french français or \$ 20**.

You can buy source for **300 french français or \$ 60**.

For it, send check to :

Gilles Vollant  
13, rue François Mansart

91540 Mennecey  
France

phone : (33) (1) 64 99 75 23

