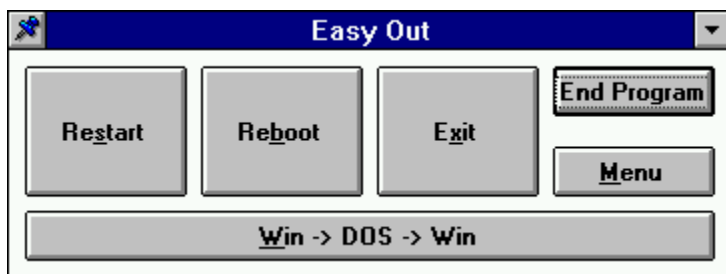


Easy Out 1.1 Contents

NOTE: THIS PROGRAM MIGHT NOT WORK UNDER OS/2, POWERMACINTOSH, WINDOWS NT, OR UNIX. IN FACT, IN ALL THOSE CASES, *EASY OUT 1.1* MIGHT CAUSE SYSTEM CRASHES. THIS PROGRAM IS ONLY TESTED TO WORK IN WINDOWS 3.X OR WINDOWS FOR WORKGROUPS 3.1X. WE CANNOT SAY ONE WAY OR ANOTHER WHETHER THIS PROGRAM WILL RUN UNDER WINDOWS 95.

[The Help Menu](#)

[Shortcut Keys](#)



XpresWare

[Copyright Information](#)

[Catalog](#)

[Registration and Ordering](#)

[How to Reach Us](#)

Help Menu

The help menu is accessible by left-clicking on the button labeled *Menu*. A drop-down menu will then appear.

If you choose this:	This happens:
<u>C</u> ontents	This help file opens to the contents. This command will not work if the file <i>EASYOUT.HLP</i> is not in the same directory as the program file <i>EASYOUT.EXE</i> .
<u>S</u> earch	The <i>Search</i> dialog box opens. This command will not work if the file <i>EASYOUT.HLP</i> is not in the same directory as the program file <i>EASYOUT.EXE</i> .
<u>H</u> elp on Help	WinHelp opens the file <i>WINHELP.HLP</i> (don't worry: you don't need to know where that file is).
<u>A</u> bout	Opens the <u><i>About</i> dialog box</u> , which supplies copyright and system information.





The Command Buttons

WinFast has five command buttons, each associated with a different function.

If you click on.....This happens

Restart Windows exits then restarts. This is for when the computer tells you to restart Windows.

Reboot Windows exits and then your system restarts. (Windows does not, however, unless it is told to in the AUTOEXEC.BAT.)

Exit Windows exits. (The current session ends.)

Win -> DOS -> Win Easy Out prompts you for a program, Windows then quits, DOS runs the program, and then Windows restarts.

End Program Easy Out exits.



The Shortcut Keys

If you press this.....	This happens
Alt+S	Windows exits then begins again. It is the equivalent of clicking the <i>EXIT</i> BUTTON then typing WIN at the DOS prompt.
Alt+B	Windows exits then the entire computer reboots. It is the equivalent of clicking the <i>EXIT</i> BUTTON then hitting Ctrl+Alt+Delete.
Alt+X	Windows exits. This is the same as choosing <i>EXIT WINDOWS</i> from the <i>FILE</i> menu of the Program Manager.
Alt+F4	Easy Out exits. This is the same as choosing <i>Close</i> from the <i>System Menu</i> .
Alt+W	Easy Out prompts you for a program, Windows exits, DOS runs the program, Windows restarts. The equivalent commands set is clicking the <i>EXIT</i> BUTTON, then typing a command, then typing WIN at the next DOS prompt.
[Alt+]M	The <i>Help Menu</i> opens on the button labeled <i>Menu</i> .

Alt+A means the *Alt* button should be pressed in conjunction with the *A* key. Case is not a factor. [Alt+]A means pressing *A* and pressing *Alt+A* mean the same thing.



COPYRIGHT INFORMATION

Easy Out, PaperPad, MaxPad, CD Xpres, and PenPad are copyright © 1994 XpresWare. All right reserved. Microsoft is a registered trademark ® of Microsoft Corporation. Windows, Windows for Workgroups, Windows for Pen Computing, Windows 95, and Windows NT are trademarks ™ of Microsoft Corporation. Apple is a registered trademark ® of Apple Computer, Inc. PowerMacintosh is a trademark ™ of Apple Computer, Inc. OS/2 is a trademark ™ of IBM Corporation. PowerPC a trademark ™ of Apple Computer, Inc, IBM Corporation, and Motorola, Inc. None of these companies endorse XpresWare or its products.

XpresWare Catalog

Microsoft Windows 3.x programs:

PaperPad 2.0 is our premiere program, a text editor to rival Notepad. It has enhanced abilities over version 1.1, including the ability to edit up to 63 kilobytes of text. Jul '94. \$15.

Easy Out 1.1 is this program, a quick "slam dance" approach to the exiting abilities of Windows. It includes the ability to restart the entire computer! Available now, \$15.

CD Xpres 1.0 is a fast CD player. Sept '94, \$10.

Microsoft Windows for Pen Computing 3.x programs:

PenPad 1.0 is a version of PaperPad 1.1 especially designed to make extra editing functions available for Windows for Pen Computing. Available now, \$15.

PenPad 2.0 is a version of PaperPad 2.0 designed to complement Windows for Pen Computing. Jan '95, \$20.

Apple Macintosh programs:

MaxPad 1.0 is the Macintosh version of PaperPad 2.0. Sept '94. \$20.

Ordering Information

DISCLAIMER:

THESE RELEASE DATE GIVEN FOR ALL PROGRAMS ARE ALL ESTIMATES. ANY PROGRAM MAY COME OUT AFTER ITS RELEASE DATE HAS PASSED.



Registration and Ordering Information

Benefits of Buying:

All registered users of *Easy Out* get discounts on future programs, upgrades, and a subscription to XpresNews, a quarterly newsletter that discusses XpresWare and the industry.

To Users of *Easy Out* who have not paid:

If you use this program for one month and decide that you like it, please send \$15, plus \$3 for First Class mail or \$11 for overnight Express Mail, in the form of check or money order, along with a filled out registration card (file *REGISTER.TXT*) in either electronic or paper form (we recommend paper) to:

XpresWare
6 Channing Pl
Cambridge, MA 02138

When we receive payment from the check or money order, we will send out the program.

To Users of *Easy Out* who have paid:

Please send in the including registration card to the above address.

To Users who wish to purchase a program listed in the catalog:

Please send the money listed plus \$3 for US Mail/\$11 for Express Mail in the form of a check or money order along with your name and address to the above address. When the program becomes available, we will send it.



How to reach us

Internet E-mail: XPRESWARE@AOL.COM.

Fax: (617) 576-7671. (Please include your fax number so we can respond.)

Address: XpresWare, 6 Channing Place, Cambridge, MA 02138. (Please include a SASE so we can respond.)

Remember: **COMMENTS ARE APPRECIATED!**

SASE: Self Addressed Stamped Envelope

