

Express Meter Editor help index

For information on Express Meter Editor, choose one of the topics below. To learn how to use help, press F1 or choose Using Help from the Help menu.

[Using Express Meter Editor with a keyboard](#)

[Commands](#)

[Dialog boxes](#)

[Procedures](#)

[The main window](#)

Using Express Meter Editor with a keyboard

Use the following keys within Express Meter Editor's dialog boxes. A plus sign between key names means to hold down the first key while you press the second key.

Press	To
TAB	Move from option to option (left to right and top to bottom).
SHIFT+TAB	Move from option to option in reverse order.
ALT+LETTER	Move to the option or group whose underlined letter matches the one you type.
ARROW KEYS	Move the selection cursor from option to option within a group of options. - or - Move the selection cursor left, right, up, or down within a list box or text box.
HOME	Move to the first item or character in a list or text box.
END	Move to the last item or character in a list or text box.
PGUP or PGDN	Scroll up or down in a list box, one window at a time.
ALT+DOWN ARROW	Open a drop-down list box.
SPACEBAR	Select or cancel a selection in a list box. Also, to select or clear an option.
ENTER	Carry out the currently-selected options and list items in a dialog box.
ESC	Close the dialog box without completing the command.

Express Meter Editor commands

Library Menu

[New...](#)
[Open...](#)
[Refresh](#)
[Sort by](#)
[Include](#)
[Copy List](#)
[Save List As...](#)
[Print List...](#)
[View User Lists...](#)
[Library Statistics...](#)
[Savings Meter...](#)
[Preferences...](#)
[Exit](#)

Application Menu

[Add...](#)
[Edit...](#)
[Delete...](#)
[Template...](#)
[Merge...](#)
[Users...](#)
[Statistics...](#)
[Graph...](#)
[Log...](#)
[Report...](#)
[Reset...](#)

Suite Menu

[Add...](#)
[Edit...](#)
[Delete...](#)

Related topics

[Dialog boxes](#)
[Procedures](#)

Express Meter Editor dialog boxes

[About dialog box](#)

[Application Editor dialog box](#)

[Compliance Details dialog box](#)

[Cost Savings Details dialog box](#)

[Edit Message dialog box](#)

[Graph dialog box](#)

[Suite Editor dialog box](#)

[Increased Access dialog box](#)

[Library Statistics dialog box](#)

[Library Users dialog box](#)

[New Library dialog box](#)

[Open Library dialog box](#)

[Options dialog box](#)

[Preferences dialog box](#)

[Print dialog box](#)

[Report dialog box](#)

[Reset dialog box](#)

[Save As dialog box](#)

[Savings Meter dialog box](#)

[Statistics Copy dialog box](#)

[Statistics dialog box](#)

[Template dialog box](#)

[Upgrade dialog box](#)

[Users dialog box](#)

Related topics

[Commands](#)

[Procedures](#)

Express Meter Editor procedures

Working with Libraries

[Types of libraries](#)

[Creating a new library](#)

[Opening an existing library](#)

[Sorting the application list](#)

[Filtering the application list](#)

[Copying the application list to the clipboard](#)

[Saving the application list to a file](#)

[Printing the application list](#)

[Showing users of all applications](#)

[Showing library statistics](#)

[Setting preferences](#)

[INI switches](#)

Working with metered applications

[Adding a new application](#)

[Editing an existing application](#)

[Deleting an application](#)

[Defining a template for applications](#)

[Creating an application suite](#)

[Editing an application suite](#)

[Deleting an application suite](#)

[Merging applications from Program Manager or another library](#)

[Showing application users](#)

[Showing application statistics](#)

[Showing application usage graphs](#)

[Showing application log files](#)

[Showing application reports](#)

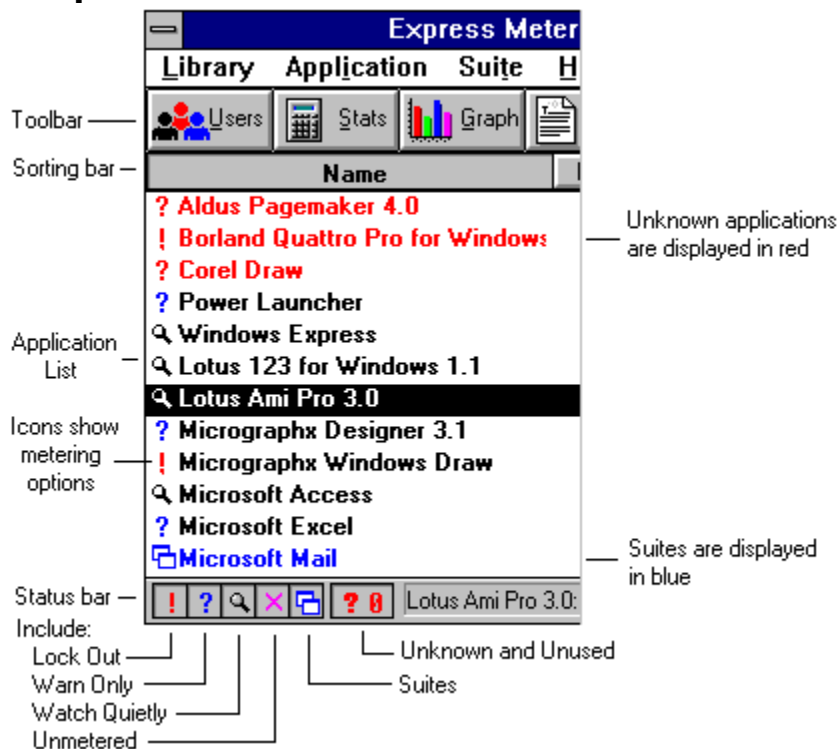
[Resetting application reporting](#)

Related topics

[Commands](#)

[Dialog boxes](#)

Express Meter Editor main window



The main window is divided into four areas.

The **toolbar** at the top of the window provides single-click access to the most commonly used features of the Express Meter Editor. Buttons are included for the following commands from the Application menu: Users, Statistics, Graph, Log, Report, Add, and Delete. On the far right is a button for the Library Savings Meter command.

The **sorting bar** just below the toolbar allows the applications in the main window to be sorted by name, number of licenses, number of users, first usage date, or total usage to date. To change the sorting order, press the corresponding button. The sorting order can also be changed using the Library Sort by command.

The **application list** shows all the applications and suites in the current library. Red items are unknown applications - those that have been used, but which do not have a number of licenses set yet. Black items are known applications - those entered or verified by the system administrator. Blue items are application suites. For each application it displays the total number of licenses, the number of licenses currently in use, the date auditing began, and the total usage in hours. An icon to the left of the application indicates the type of metering selected for that application: Lock Out, Warn Only, Watch Quietly, or not metered. For each suite it shows the total number of licenses. Double-clicking on an entry or selecting it and pressing return invokes the Application Editor or Suite Editor dialog box for the selected entry, where the metering options may be modified. In Windows 3.1, dragging an executable file from File Manager will add that application to the Application Library. Express Meter Editor continuously updates the application list based upon user activity.

The **status bar** at the bottom of the window offers a brief summary of the metering options that apply to the selected application. For suites, it gives a list of the applications within that suite. At the left is a set of filter buttons that allow you to specify what items you want to display (from left to right, the buttons are Lock Out, Warn Only, Watch Quietly, Not Metered, Suites, and Unknown and Unused). The set of items which are displayed can also be changed using the Library Include command.

Related topics

[Copying the application list to the clipboard](#)

[Saving the application list to a file](#)

[Printing the application list](#)

[Showing users of all applications](#)

[Library Sort by command](#)

[Library Include command](#)

[Application Users... command](#)

[Application Statistics... command](#)

[Application Graph... command](#)

[Application Log... command](#)

[Application Report... command](#)

[Application Add... command](#)

[Application Delete... command](#)

Library New... command

Creates a new application library.

To create a new library, first create an empty directory on your server. This directory must have read, write, and create rights for all users, and delete rights for the system administrator. Then choose the Library New... command and enter the pathname of this directory. The new library will be initially empty; use the [Application Add... command](#) to add applications to this library.

All new libraries are [Trial libraries](#). These libraries can be upgraded to [Evaluation libraries](#) or [Full libraries](#).

Creating a new library does not change the library used by workstation Express Meter users.

Related topics

[New Library dialog box](#)

[Library Open... command](#)

[Application Add... command](#)

[Library types](#)

Library Open... command

Opens an existing application library. Libraries always use the filename APPLIB.LIB. To open a different library, enter the pathname of the directory containing the library you want to open, and press OK.

Opening a different library does not change the library used by workstation Express Meter users.

Related topics

[Open dialog box](#)

[Library New... command](#)

[Library types](#)

Library Refresh command

Updates the application list to show usage changes or metering option changes made by another Express Meter Editor user. Note that the application list is automatically updated periodically according to the time period specified in the Preferences dialog box.

Related topics

[Library Preferences... command](#)

Library Sort by command

Sorts the application list by the selected column: Name, Licenses, Users, Since, Usage. You can also perform a sort using the sorting bar in the main window.

Related topics

[The main window](#)

[Library Include command](#)

Library Include command

Determines which applications are displayed in the main window. You can choose any combination of: Unmetered, Lock Out, Warn Only, Watch Quietly, and Suites. In addition, you can choose whether or not to display applications which are Unknown and Unused. You can also choose which applications to display using the buttons in the status bar in the main window.

Related topics

[The main window](#)

[Library Sort by command](#)

Library Copy List command

Copies the current application list to the clipboard, in a tab-delimited format. Each record will correspond to one application in the list. The fields in each record are: Application name, number of licenses, metering options, and executable name.

Related topics

[Library Save List As... command](#)

[Library Print List... command](#)

[Library View User Lists... command](#)

Library Save List As... command

Brings up the [Save As dialog box](#), which allows you to save the application list to a text file. For each application, the following information is included: number of licenses, executable file name, a summary of metering options, report period, and total usage.

Related topics

[Save As dialog box](#)

[Library Copy List command](#)

[Library Print List... command](#)

[Library View User Lists... command](#)

Library Print List... command

Brings up the [Print dialog box](#), which lets you print the application list to the current printer. For each application, the following information is included: number of licenses, executable file name, a summary of metering options, report period, and total usage.

Related topics

[Print dialog box](#)

[Library Copy List command](#)

[Library Save List As... command](#)

[Library View User Lists... command](#)

Library View User Lists... command

This shows you current and waiting users for all applications in the application library. You can edit, copy, or print this list using the menu commands provided.

Note: You must have Windows Notepad on your path in order to use this feature.

Related topics

[Library Copy List command](#)

[Library Save List As... command](#)

[Library Print List... command](#)

Library Statistics... command

Brings up the [Library Statistics dialog box](#), which gives information about the current library.

Related topics

[Library Statistics dialog box](#)

Library Savings Meter... command

Brings up the [Savings Meter dialog box](#), which gives overall statistics on license compliance, cost savings, and increased user access made possible by Express Meter.

Related topics

[Savings Meter dialog box](#)

Library Preferences... command

Brings up the [Preferences dialog box](#), which allows you to set overall Express Meter Editor preferences.

Related topics

[Preferences dialog box](#)

Library Exit command

Exits Express Meter Editor.

Application Add... command

Adds an application to the application library. This will bring up the [Application Editor dialog box](#) to allow you to specify various options for the application.

Note: The application executable file itself is not affected by this command. This command simply stores information about an application in the application library so that it may be metered.

Related topics

[Application Editor dialog box](#)

[Application Edit... command](#)

[Application Delete... command](#)

[Application Template... command](#)

Application Edit... command

Brings up the [Application Editor dialog box](#) for the selected application, allowing you to change the metering options for that application.

Note: A shortcut to editing an application is to double-click on the application in the application list, or to select it and press enter.

Related topics

[Application Editor dialog box](#)

[Application Add... command](#)

[Application Delete... command](#)

Application Delete... command

Deletes the selected application from the application library, along with any accumulated statistics and the log file. You will be asked to confirm the deletion.

Note: The application executable file itself is not affected by this command.

Related topics

[Application Editor dialog box](#)

[Application Add... command](#)

[Application Edit... command](#)

Application Template... command

Defines a template to be used for all applications added to the application library.

Related topics

[Template dialog box](#)

[Application Editor dialog box](#)

[Application Add... command](#)

Application Merge... command

Brings up a File Open dialog box, which allows you to choose a Program Manager group file to be merged into the application library. For each item in this group, the Application Editor dialog box will be shown, allowing you to specify how many licenses are available and change other metering options.

Application Users... command

Brings up the [Users dialog box](#), which shows current and waiting users for the selected application.

Related topics

[Users dialog box](#)

[Application Statistics... command](#)

[Application Graph... command](#)

[Application Log... command](#)

[Application Report... command](#)

[Application Reset... command](#)

Application Statistics... command

Brings up the [Statistics dialog box](#), allowing you to view usage information for that application.

Related topics

[Statistics dialog box](#)

[Statistics Copy dialog box](#)

[Application Users... command](#)

[Application Graph... command](#)

[Application Log... command](#)

[Application Report... command](#)

[Application Reset... command](#)

Application Graph... command

Brings up the [Graph dialog box](#) for the selected application, allowing you to view usage graphs for that application.

Related topics

[Graph dialog box](#)

[Application Users... command](#)

[Application Statistics... command](#)

[Application Log... command](#)

[Application Report... command](#)

[Application Reset... command](#)

Application Log... command

Brings up the log file for the selected application, which contains a history of the application launches. You can edit, copy, or print this file using the menu commands provided.

Note: You must have Windows Notepad on your path in order to use this feature.

Related topics

[Application Users... command](#)

[Application Statistics... command](#)

[Application Graph... command](#)

[Application Report... command](#)

[Application Reset... command](#)

Application Report... command

Brings up the [Report dialog box](#), allowing you to generate reports on any set of applications.

Related topics

[Report dialog box](#)

[Application Users... command](#)

[Application Statistics... command](#)

[Application Graph... command](#)

[Application Log... command](#)

[Application Reset... command](#)

Application Reset... command

Brings up the [Reset dialog box](#), allowing you to reset reporting on any set of applications. Resetting the reporting for an application sets the initial report date (shown in the application list, the statistics box, and the reports) to the current date, clears all usage statistics, and empties the log file.

Related topics

[Reset dialog box](#)

[Application Users... command](#)

[Application Statistics... command](#)

[Application Graph... command](#)

[Application Log... command](#)

[Application Report... command](#)

Suite Add... command

Adds a suite to the application library. This will bring up the Suite Editor dialog box to allow you to specify options for the suite.

Before you add a suite to a library, you must first add all of the applications in that suite. When you add the applications, specify the number of individual licenses you have for each application in that application's Licenses control. If you do not have any individual licenses for that application, enter 0 in that application's Licenses control.

Related topics

[Suite Editor dialog box](#)

[Application Add... command](#)

[Suite Edit... command](#)

[Suite Delete... command](#)

Suite Edit... command

Brings up the [Suite Editor dialog box](#) for the selected [suite](#), allowing you to change the options for that suite.

Before you add an application to a suite, you must first add that application to the library. When you add an application that will be part of a suite, specify the number of individual licenses you have for that application in the Licenses control. If you do not have any individual licenses for that application, enter 0 in that application's Licenses control.

Note: A shortcut to editing a suite is to double-click on the suite in the application list, or to select it and press enter.

Related topics

[Suite Editor dialog box](#)

[Suite Add... command](#)

[Suite Delete... command](#)

Suite Delete... command

Deletes the selected suite from the application library. You will be asked to confirm the deletion.

Note: The applications in the suite are not deleted.

Related topics

[Suite Editor dialog box](#)

[Suite Add... command](#)

[Suite Edit... command](#)

About dialog box

The About dialog box shows the Express Meter Editor version number, your serial number, and your name and company.

Application Editor dialog box

The Application Editor dialog box lets you set and modify information about a metered application.

In Windows 3.1, this dialog box is a drag-and-drop target. Simply drag a file from File Manager to this dialog box in order to add a new application.

Note: default values for the application editor can be specified using the Application Template... command.

Name The name you want to use for the application in the application list and in reports. Use the drop-down list box to select another application to edit (available only if you displayed the Application Editor dialog box using the Application Edit... command).

Program The executable file name of the application to be metered. If you specify a full pathname, only this copy of the executable will be metered. If you specify the file name with no path, then all copies of this executable will be metered.

UNC Name The Universal-Naming Convention name used to uniquely identify the executable file on a network. By default, this is what is used to determine whether a particular executable file on a network should be metered; to override this (and use only by the path and filename specified in Program), use the Use UNC Name option in the Options dialog box.

Licenses The number of licenses you have for this application. Depending on the settings of other options in this box, this number may be used to restrict application usage or simply to gather statistics. If this application is part of a suite, you should enter the number of individual licenses you have for the application, which may be zero.

Unit Price The price of the application. This is used in the Savings Meter dialog box to report the savings and the value of increased access provided by Express Meter.

Enable Application Metering

Whether metering is enabled for this application. If metering is not enabled, you will not be able to control usage or gather statistics for the application.

Lock Out Users If this option is set, users will be prevented from running unlicensed copies of the application. They will get a message indicating that all licenses are in use and offering to put them on a waiting list for that application. If they choose to wait, they will be notified when a license becomes available and then allowed to launch the application.

Warn Users Only

If this option is set, users will be warned if they attempt to run an unlicensed copy of the application. They will get a message indicating that all licenses are in use and offering to put them on a waiting list for that application. They will also have the option of continuing the launch with an unlicensed copy. If they choose to wait, they will be notified when a license becomes available and then allowed to launch the application.

Watch Quietly If this option is set, users will not be warned if they attempt to run an unlicensed copy of the application. Usage statistics will still be gathered, however, so that application usage can be monitored.

Limit ___ mins Sets a time limit for application usage, in minutes. If users use the application for longer than this time, they will be warned that they have exceeded the time limit and asked to close the application. Leave this blank if you do not want a time limit. This option is disabled if the **Watch Quietly** option is set.

warn every ___ mins Use this option to continue to warn the user that their time limit has expired. Leave this blank if you do not want to warn the user. This option is disabled if the **Watch Quietly** option is set, or if no time limit has been set.

only if user is waiting If this option is set, the time limit and warning messages only appear if there is another user waiting for the application.

Collect Statistics If this option is set, usage statistics will be collected for the application. See the [Statistics dialog box](#) for more information on what statistics are collected.

Meter Local Copy Set this option to meter local copies of an application as well as those run from the network. A "local copy" is one residing on a user's local disk. If this option is not set, only copies of an application residing on a network server will be metered.

Keep log file Set this option to maintain a log file for the application. The log file gives a history of application launches, showing whether or not the launch succeeded, whether it was licensed or not, the date, time, and user. The log file grows by approximately 50 bytes for each application launch, and it must be cleared periodically using the [Application Reset... command](#).

Check For Virus Set this option to have simple virus checks performed. Each time the application is launched, its size and CRC (Cyclic Redundancy Check) will be compared against values stored when the application was first added to the library. Since many viruses will affect these values, this option provides an efficient first-pass virus check. It does not replace the need for periodic virus scans using a comprehensive virus detection and removal package, however. If a mismatch occurs, the user is warned and given the option of continuing or canceling the application launch. Users will continue to be warned until the application information is edited using the [Application Edit... command](#).

Related topics

[Application Add... command](#)

[Application Edit... command](#)

[Application Template... command](#)

[Application Reset... command](#)

[Application Template dialog box](#)

[Options dialog box](#)

Statistics dialog box
Savings Meter dialog box

Compliance Details dialog box

The Compliance Details dialog box shows details of compliance with application license agreements. Only applications for which unlicensed usage was allowed, and for which unlicensed usage occurred, will be included in this list; use the **Lock Out Users** option in the [Application Editor dialog box](#) to prevent unlicensed application usage. Note that the **Collect Statistics** option must be set for an application (using the [Application Editor dialog box](#)) in order for it to appear on the list.

The summaries and recommendations are made using statistics gathered over the course of the **Metered Period** in the [Savings Meter dialog box](#). The longer this period, the more accurately the statistics will reflect your long term usage patterns. For short metered periods, the number of applications not in conformance may be understated.

In addition to usage data, the summaries and recommendations are based on the number of licenses of each application as specified in the [Application Editor dialog box](#). You can change this option at any time and the change will be reflected in the summaries and recommendations given.

Note: All of the statistics assume that your applications are being metered correctly, and that in particular any applications shared among users are licensed concurrently. Be sure to check each of your application's license agreements to ensure you are metering it correctly.

Application The name of the application for which unlicensed usage occurred.

Licenses Owned The number of licenses owned for the application, as specified in the [Application Editor dialog box](#). This number does not include any [suite](#) licenses for suites that the application is part of, if any.

Unlicensed Usage The percentage of time that unlicensed usage (more users than licenses) occurred. If the application is part of a [suite](#), this percentage indicates usage for which neither an individual license nor a suite license was available.

Suggested Purchase, no wait The suggested number of additional concurrent licenses to purchase, to comply with license agreements and so that no user will wait for a license.

Suggested Purchase, X% wait The suggested number of additional concurrent licenses to purchase, to comply with license agreements and so that users will wait for a license no more than X % of the time. See the description of the [Options dialog box](#) for information on setting the acceptable wait percentage. Note: this number may be zero, indicating that compliance can be achieved using the current licenses at the current acceptable wait percentage.

Copy Press this button to copy the information contained in this dialog box to the clipboard in a tab-delimited format (suitable for pasting into a spreadsheet or table).

Report Press this button to view a report of the information contained in this dialog box. The information in this report can be printed, copied to the clipboard, or saved to a text file using the menu commands provided.

Related topics

[Application Editor dialog box](#)

[Options dialog box](#)

[Savings Meter dialog box](#)

Cost Savings Details dialog box

The Cost Savings Details dialog box shows details of software cost savings provided by Express Meter. Applications for which savings could be achieved are displayed in bold. Note that the **Collect Statistics** option must be set for an application (using the [Application Editor dialog box](#)) in order for it to appear on the list.

The summaries and recommendations are made using statistics gathered over the course of the **Metered Period** in the [Savings Meter dialog box](#). The longer this period, the more accurately the statistics will reflect your long term usage patterns. For short metered periods, the cost savings may be understated.

In addition to usage data, the summaries and recommendations are based on the number of licenses and the unit price of each application as specified in the [Application Editor dialog box](#), and on the acceptable wait percentage specified in the library's [Options dialog box](#). You can change these options at any time and the changes will be reflected in the summaries and recommendations given.

Note: All of the statistics assume that your applications are being metered correctly, and that in particular any applications shared among users are licensed concurrently. Be sure to check each of your application's license agreements to ensure you are metering it correctly.

Application The name of the application or [suite](#). Suites are shown in blue. Applications which are currently not in conformance with their licenses are shown in red.

Licenses The number of licenses owned for the application, as specified in the [Application Editor dialog box](#). This number does not include any [suite](#) licenses for suites that the application is part of, if any.

Price The unit price of the application, as specified in the [Application Editor dialog box](#).

Licenses Required w/out EM The number of licenses which would be required without Express Meter. This corresponds to the total number of users who launched or attempted to launch the application during the metering period.

Optimum Use with EM The number of licenses required when using Express Meter to meter usage. This number depends on peak concurrent usage during the metering period, as well as the acceptable wait percentage specified in the library's [Options dialog box](#).

License cost w/out EM The total cost of the licenses which would be required without Express Meter. This is the unit price of the application (set using the [Application Editor dialog box](#)) multiplied by the **Licenses Required w/out EM**.

License cost with EM The total cost of the licenses which are required with Express Meter. This is the unit price of the application (set using the [Application Editor dialog box](#)) multiplied by the **Optimum Use with EM**.

Savings from EM The total savings provided by Express Meter. This is the **License cost with EM** minus **License cost w/out EM**.

Total: Totals for each column.

Copy Press this button to copy the information contained in this dialog box to the clipboard in a tab-delimited format (suitable for pasting into a spreadsheet or table).

Report Press this button to view a report of the information contained in this dialog box. The information in this report can be printed, copied to the clipboard, or saved to a text file using the menu commands provided.

Related topics

[Application Editor dialog box](#)

[Options dialog box](#)

[Savings Meter dialog box](#)

Edit Message dialog box

The Edit Message dialog box allows you to customize some of the error messages that may be seen by Express Meter users.

Many of the error messages which are displayed to Express Meter users have a sentence which reads "Please notify your system administrator." This sentence can be customized using this dialog box. For example, you may want to use "Please notify Christine at x5287" instead.

Use the large edit control to enter your message. A sample error message using your custom message is shown at the top of the dialog box.

Reset Resets the message to the default ("Please notify your system administrator").

Related topics

[Options dialog box](#)

Graph dialog box

The Graph dialog box shows graphs of various usage statistics for an application.

Name	The application for which to view statistics. Use the drop-down list box to select another application.
Daily	For each day in the reporting period, shows the number of times the application was launched.
User	For each user, shows the number of times the user launched the application.
Failed	For each day, shows the number of times a launch failed. Whenever a user attempts to launch an application and it is unsuccessful, it is considered a failed launch. This happens when metering is set to Lock Out Users or Warn Users Only, all licenses are in use, and the user chooses to cancel the launch or later remove themselves from the waiting list.
Unlicensed	For each day, shows the number of times an unlicensed copy of the application was launched.
Waited	For each day, shows the number of times a user was put on the waiting list because all licenses were in use.
Peak Usage	For each hour, shows the maximum number of users that were running the application at the same time. Licensed usage is shown in green; unlicensed usage in red. If the application is part of a <u>suite</u> , there will be two horizontal lines on the chart - the first indicates the number of individual licenses you have for that application (if any) and the second indicates the number of individual licenses plus the number of suite licenses you have. The region between these lines is shown in yellow - this indicates usage which may or may not have been licensed, depending on the usage of other applications in the suite. Use the Unlicensed graph to determine whether unlicensed usage did in fact occur during these periods.
Copy	Press this button to copy the current graph to the clipboard.

Related topics

[Application Graph... command](#)

[Application Reset... command](#)

[Statistics dialog box](#)

Suite Editor dialog box

The Suite Editor dialog box lets you set and modify information about a suite.

- Name** The name you want to use for the suite in the application list and in reports. Use the drop-down list box to select another suite to edit.
- Licenses** The number of licenses you have for this suite. This number should not include any individual licenses you have for applications within the suite.

Available Applications

The applications which are available to be added to the suite. Note that each application within a suite must first be added as an individual application. An application will not appear on this list if it is already in any suite (an application can not be in more than one suite).

Applications In Suite

The applications which are currently in the suite.

- Add** Adds the selected application to the suite.
- Remove** Removes the selected application from the suite.
- Unit Price** The price of the suite.

Related topics

[Suite Add... command](#)

[Suite Edit... command](#)

[Suite Delete... command](#)

Increased Access Details dialog box

The Increased Access Details dialog box shows details of increased access to applications provided by Express Meter. Applications for which access could be increased are displayed in bold. Note that the **Collect Statistics** option must be set for an application (using the [Application Editor dialog box](#)) in order for it to appear on the list.

The summaries and recommendations are made using statistics gathered over the course of the **Metered Period** in the [Savings Meter dialog box](#). The longer this period, the more accurately the statistics will reflect your long term usage patterns. For short metered periods, the increased access figures may be understated.

In addition to usage data, the summaries and recommendations are based on the number of licenses and the unit price of each application as specified in the [Application Editor dialog box](#), and on the acceptable wait percentage specified in the library's [Options dialog box](#). You can change these options at any time and the changes will be reflected in the summaries and recommendations given.

Note: All of the statistics assume that your applications are being metered correctly, and that in particular any applications shared among users are licensed concurrently. Be sure to check each of your application's license agreements to ensure you are metering it correctly.

Application	The name of the application.
Licenses	The number of licenses owned for the application, as specified in the Application Editor dialog box . This number does not include any suite licenses for suites that the application is part of, if any.
Total Users	The total number of users of the application during the metering period.
Additional Users, no wait	The additional number of users that could be supported using Express Meter, without any users waiting for an application license.
Additional Users, X% wait	The additional number of users that could be supported using Express Meter, with users waiting for an application license no more than X% of the time (this percentage can be set using the library's Options dialog box).
Value, no wait	The value of the increased access, with no wait. This is the unit price of the application multiplied by Additional Users, no wait .
Value, X% wait	The value of the increased access, with an acceptable percentage of users waiting for an application license. This is the unit price of the application multiplied by Additional Users, X% wait .
Additional Users, X% wait	The additional number of users that could be supported using Express Meter, with users waiting for an application license no more than X% of the time (this percentage can be set using the library's Options dialog box).
Total:	Totals for each column.

Copy

Press this button to copy the information contained in this dialog box to the clipboard in a tab-delimited format (suitable for pasting into a spreadsheet or table).

Report

Press this button to view a report of the information contained in this dialog box. The information in this report can be printed, copied to the clipboard, or saved to a text file using the menu commands provided.

Related topics

[Application Editor dialog box](#)

[Options dialog box](#)

[Savings Meter dialog box](#)

Library Statistics dialog box

The Library Statistics dialog box shows various information about the current application library.

- Library path** The full path of the current application library.
- Licensed for** How many users the current library is licensed for. If the library is not a Full library, the type of library will be shown as well. Trial libraries and Evaluation libraries will show as being licensed for zero users. Libraries can be upgraded from Trial libraries to Evaluation libraries and Full libraries, from Evaluation libraries to Full libraries, and from Full libraries to Full libraries licensed for more users, by pressing the **Upgrade** button and calling Express Systems for a password.

Evaluation period expires

If the library is a Trial library or Evaluation library that has been accessed by at least one user, this displays the date that the library will expire. Until this date, the library can be accessed by an unlimited number of users. After this date, users will not be able to access the library and metering will be suspended (the library can be accessed using Express Meter Editor). Full libraries do not have an expiration date. Libraries can be upgraded to Full libraries by pressing the **Upgrade** button and calling Express Systems for a password.

Total users to date

The total number of users that have accessed this library to date.

- Created by** The user that created the library.

- Created on** The date and time that the library was created.

Library serial number

The serial number of the library.

Editor serial number

The serial number of the copy of Express Meter Editor that was used to create the library.

- Users** Brings up the Library Users dialog box, which shows the current users of the library.

- Options** Brings up the Options dialog box, which lets you set overall options for the current library.

- Upgrade** Brings up the Upgrade dialog box, which allows you to upgrade your library. Trial libraries can be upgraded to Evaluation libraries or Full libraries. Evaluation libraries can be upgraded to Full libraries. Full libraries can be upgraded to allow more users. Sample libraries can not be upgraded.

Related topics

Library Library Statistics... command

Library Users dialog box

Options dialog box

Upgrade dialog box

Library Users dialog box

The Library Users dialog box shows users of the current application library.

To Date User(s) The number of users who have used this application library to date.

Current User(s) The number of users currently using this application library.

User: list All of the users who have ever used application library, with the date and time they first used it, and the date and time they started their current Windows session. This list can be sorted by using the User, First Login, and Current Login sorting buttons.

Copy Copies the user list to the clipboard.

Related topics

[Library Statistics dialog box](#)

New Library dialog box

The New Library dialog box allows you to create a new application library. All new libraries are Trial libraries. These libraries can be upgraded to Evaluation libraries or Full libraries.

Creating a new library does not change the library used by workstation Express Meter users.

Library Path Specify the path of the new library here. This directory must already exist, and must have read, write, and create rights for all users, and delete rights for the system administrator. It is suggested that you use a directory which is initially empty.

Related topics

[Library New... command](#)

Open dialog box

The Open dialog box allows you to open an existing application library.

Opening a library does not change the library used by workstation Express Meter users.

Filename This is always APPLIB.LIB.

files list box Displays APPLIB.LIB if there is one in the current directory.

Directories list box

Use the directories list box to change the current directory, so that you can locate the APPLIB.LIB file you want.

Drives combo box

To change to a different drive, select it from this list.

Options dialog box

The Options dialog box lets you set overall preferences for the current application library.

Library Indicates the current application library. This can be changed using the Library Open... command.

Hold Application For User: __ minute(s)

The amount of time to hold an application for a waiting user when a license becomes available. If users do not respond within this amount of time, they will be moved to the bottom of the waiting list and the license will become available to the next user on the waiting list.

Check Application Every: __ second(s)

How often Express Meter checks to see whether an application that a user is waiting for has become available, or whether a workstation has crashed or has been rebooted. Decreasing this value will decrease the time required for a closed application to become available to a waiting user and will improve Express Meter's ability to detect crashed applications, but may slow down the system.

Check Suite Licenses Every: __ second(s)

How often Express Meter checks to see whether a suite license that a user is waiting for has become available. Decreasing this value will decrease the time required for a freed suite license to become available to a waiting user, but may slow down the system. This value must be a multiple of the value specified for **Check Application Every: __ second(s)**.

It is acceptable to wait __ % of the time for a launch.

This option indicates an acceptable upper limit for the percentage of launches which result in the user being placed on a waiting list. This limit has no effect on metering; it is used only in determining purchase recommendations in the Savings Meter dialog box. Increasing this number will reduce the number of purchases recommended.

VIP Password An optional password that allows users to temporarily suspend metering. If supplied, users can temporarily disable metering by running "applib /d" and supplying the password. Metering is enabled by running "applib /e" or by restarting windows. Note: during the period of time that metering is disabled, no usage statistics will be gathered, and user activity will not appear in the log.

Enable Metering Set this option to enable metering for the current application library. If this option is not set, no application metering will be performed and no statistics will be gathered. If this option is turned off in the middle of a session, metering will stop and users will be removed from all waiting lists.

Enable Crash Detection

Set this option to enable crash detection for the current application library. Crash detection polls workstations to determine if a workstation has crashed or has been rebooted, and releases licenses held by that workstation if so. If this option is not set, any licenses held by a crashed or rebooted workstation will be released the next time the workstation runs Windows. Turning this option off

may improve workstation performance.

Use UNC Name Set this option to have Express Meter use Universal-Naming Convention names to match application executable files on a network. This allows Express Meter to detect the use of an executable file by a user even if a different drive mapping is used than is specified for the item. It also means that an executable file will not be metered if its UNC name is different (and a full pathname was specified), even if through different drive mappings the path and filename are the same. If this option is disabled, Express Meter will use the path and filename to match application executable files.

Library Error Use this control to customize some of the error messages that Express Meter users will see. Press the button with the blue triangle to display the [Edit Message dialog box](#).

Related topics

[Library Open... command](#)

[Library Statistics... command](#)

[Edit Message dialog box](#)

[Library Statistics dialog box](#)

Preferences dialog box

The Preferences dialog box lets you set overall preferences for Express Meter Editor.

Auto Refresh: ___ second(s)

Use this option to have the application list in the main window automatically updated periodically. Note that you can force the list to be updated at any time using the [Library Refresh command](#).

Library Warning

Use this option to enable or disable the library license check. When there are more concurrent users than there are Express Meter licenses, Express Meter Editor brings up a warning message box. Note that this option can be disabled in the message box.

Related topics

[Library Refresh command](#)

[Library Preferences... command](#)

Print dialog box

The Print dialog box controls the printing of the application list and of reports.

Printer	The current printer.
Print Range	The range of pages to print. In Express Meter Editor, this is always All .
Print Quality	The printing quality.
Copies	The number of copies to print.
Setup	Brings up the Printer Setup dialog box, which allows you to set printer options such as page orientation and source.

Related topics

[Library Print List... command](#)

Report dialog box

The Report dialog box allows you to generate a report for a particular application, a set of applications, or all applications. The report will include all the information from the [Application Editor dialog box](#) as well as all of the statistics you would get from the [Application Statistics... command](#).

Note: You must have Windows Notepad on your path in order to use this feature.

- | | |
|-------------------|--|
| Metered | Lists all of the applications in the current application library. Click on an application to have that application included in the report. |
| Select All | If this option is set, a report will be generated for all applications in the application library. |
| View | Press this button to view your report. Reports can be edited, copied to the clipboard, or printed using the menu commands provided. |
| Close | Dismisses the dialog box. |

Related topics

[Application Report... command](#)

[Application Reset... command](#)

[Application Statistics... command](#)

[Application Editor dialog box](#)

Reset dialog box

The Reset dialog box allows you to reset reporting for any set of applications. Resetting the reporting for an application sets the initial report date (shown in the application list, the statistics box, and the reports) to the current date, clears all usage statistics, and empties the log file.

- | | |
|-------------------|--|
| Metered | Lists all of the applications in the current application library. Next to each application is the amount of disk space that would be freed if reporting were reset. Click on an application to have that application included in the reset list. |
| Select All | If this option is set, all applications in the application library will be reset. |
| Reset | Press this button to reset the selected applications. You will be asked to confirm the reset operation. |
| Close | Dismisses the dialog box. |

Related topics

[Application Reset... command](#)

Save As dialog box

The Save As dialog box allows you to save your application list or statistics as a text file.

File Name Specify the file name here.

Directories Indicates the current directory, and allows you to change it.

Save File as Type
Determines which file type to display in the file list.

Drives Indicates the current drive, and allows you to change it.

Related topics

[Library Save List As... command](#)

Savings Meter dialog box

The Savings Meter dialog box gives you overall statistics on your level of license compliance, and the amount of money Express Meter lets you save or the increased user access it provides. Note that the **Collect Statistics** option must be set for an application (using the [Application Editor dialog box](#)) in order for it to be included in the analysis.

The summaries and recommendations are made using statistics gathered over the course of the **Metered Period**. The longer this period, the more accurately the statistics will reflect your long term usage patterns. For short metered periods, the number of applications not in conformance, the cost savings, and the increased user access may all be understated.

In addition to usage data, the summaries and recommendations are based on the number of licenses and the unit price of each application as specified in the [Application Editor dialog box](#), and on the acceptable wait percentage specified in the library's [Options dialog box](#). You can change these options at any time and the changes will be reflected in the summaries and recommendations given.

Note: All of the statistics assume that your applications are being metered correctly, and that in particular any applications shared among users are licensed concurrently. Be sure to check each of your application's license agreements to ensure you are metering it correctly.

Metered Period The metering period used to gather statistics for the reports and recommendations. The longer this period, the more accurately the statistics will reflect your long term usage patterns.

You are currently in compliance of all license agreements.
or **You are currently in violation of license agreements for X apps.**

This indicates the number of license agreements you have violated by allowing more concurrent users than you have licenses (as indicated by the **Licenses** option for that application). Use the **Lock Out Users** option in the [Application Editor dialog box](#) to prevent unlicensed usage. Pressing the **Details** button will bring up the [Compliance Details dialog box](#), which shows details on license compliance.

Using Express Meter reduces your license needs by \$X.

This indicates the amount of money that Express Meter could save through decreased license requirements. Pressing the **Details** button will bring up the [Cost Savings Details dialog box](#), which shows details on the cost savings Express Meter provides.

Alternatively, you could increase user access to your applications by X% at current license levels, representing a value of \$X.

This indicates the amount of increased user access that Express Meter could provide by exploiting concurrent license agreements. The percentage represents the total number of additional user application launches made possible through the use of Express Meter. In addition to these additional launches, Express Meter effectively allows access to any concurrently-licensed application to anyone in the organization. Pressing the **Details** button will bring up the [Increased Access Details dialog box](#), which shows details on the increased access Express Meter provides.

Report Press this button to view a report of the information contained in this

dialog box. The information in this report can be printed, copied to the clipboard, or saved to a text file using the menu commands provided.

Related topics

[Application Editor dialog box](#)

[Compliance Details dialog box](#)

[Cost Savings Details dialog box](#)

[Increased Access Details dialog box](#)

[Library Statistics dialog box](#)

Statistics dialog box

The Statistics dialog box shows various usage statistics for an application.

Name	The application for which to view statistics. Use the drop-down list box to select another application.
Licenses	The number of licenses assigned to this application.
Report	The period of time during which statistics were gathered. The starting date is the date the application was added to the library, or the last time reporting for the application was reset.
Suite Licenses	If the application is part of a <u>suite</u> , the number of suite licenses assigned to the suite.
Daily Totals	For each day in the reporting period, shows the number of times the application was launched and the total time spent using the application. Totals and averages are indicated at the bottom.
Individual Totals	For each user, shows the number of times the user launched the application and the total time the user spent using the application. Totals and averages are indicated at the bottom.
Other Totals	The top list shows how many times launches failed for each day. A failed launch happens when metering is set to Lock Out Users or Warn Users Only, all licenses are in use, and the user chooses to cancel the launch or later remove themselves from the waiting list. The middle list shows how many unlicensed copies of the application were run on each day. The bottom list shows how many users were added to the waiting list and the total time spent on the waiting list for each day. In each case, totals and averages are indicated at the bottom.
Copy	Press this button to bring up the <u>Statistics Copy dialog box</u> , which lets you create a text report of statistics and copy it to the clipboard.
Save As	Press this button to save a text report containing all statistics to a file.
Print	Press this button to print a text report containing all statistics.
Others	Press this button to toggle the display of Other Totals .

Related topics

[Application Statistics... command](#)

[Application Reset... command](#)

[Graph dialog box](#)

[Statistics Copy dialog box](#)

Statistics Copy dialog box

The Statistics Copy dialog box lets you create a text report of statistics for an application and copy it to the clipboard.

Daily Totals Set this option to include daily usage totals in the report.

Individual Totals Set this option to include individual user usage totals in the report.

Failed Totals Set this option to include failed launch totals in the report.

Unlicensed Totals Set this option to include unlicensed launch totals in the report.

Waiting Totals Set this option to include waiting list totals in the report.

Related topics

[Statistics dialog box](#)

Template dialog box

The Template dialog box lets you define default parameters for applications in an application library. These default parameters will appear in the [Application Editor dialog box](#) when you add a new application, and may be overridden at that time if desired.

- Name** The default name you want to use for applications in the application list and in reports.
- Licenses** The default number of licenses you have for applications. Depending on the settings of other options in this box, this number may be used to restrict application usage or simply to gather statistics.
- Limit ___ mins** Sets a default time limit for application usage, in minutes. If users use an application for longer than this time, they will be warned that they have exceeded the time limit and asked to close the application. Leave this blank if you do not want a default time limit. This option is disabled if the **Watch Quietly** option is set.
- Warn Every ___ mins** Use this option to continue to warn the user that their time limit has expired. Leave this blank if you do not want to warn the user by default. This option is disabled if the **Watch Quietly** option is set, or if no time limit has been set.
- Only If User Is Waiting** If this option is set, the time limit and warning messages only appear if there is another user waiting for an application.
- Lock Out Users** If this option is set, users will be prevented from running unlicensed copies of an application by default. They will get a message indicating that all licenses are in use and offering to put them on a waiting list for that application. If they choose to wait, they will be notified when a license becomes available and then allowed to launch the application.
- Warn Users Only** If this option is set, users will be warned if they attempt to run an unlicensed copy of an application by default. They will get a message indicating that all licenses are in use and offering to put them on a waiting list for that application. They will also have the option of continuing the launch with an unlicensed copy. If they choose to wait, they will be notified when a license becomes available and then allowed to launch the application.
- Watch Quietly** If this option is set, users will not be warned if they attempt to run an unlicensed copy of an application by default. Usage statistics will still be gathered, however, so that application usage can be monitored.
- Collect Statistics** If this option is set, usage statistics will be collected for applications. See the [Statistics dialog box](#) for more information on what statistics are collected.
- Meter Local Copy** Set this option to meter local copies of an application as well as those run from the network by default. A "local copy" is one residing on a user's local disk. If this option is not set, only copies of an application residing on a network server

will be metered.

Keep log file Set this option to maintain a log file for applications by default. The log file gives a history of application launches, showing whether or not the launch succeeded, whether it was licensed or not, the date, time, and user. The log file grows by approximately 50 bytes for each application launch, and it must be cleared periodically using the [Application Reset... command](#).

Check For Virus Set this option to have simple virus checks performed by default. Each time an application is launched, its size and CRC (Cyclic Redundancy Check) will be compared against values stored when the application was first added to the library. Since many viruses will affect these values, this option provides an efficient first-pass virus check. It does not replace the need for periodic virus scans using a comprehensive virus detection and removal package, however. If a mismatch occurs, the user is warned and given the option of continuing or canceling the application launch. Users will continue to be warned until the application information is edited using the [Application Edit... command](#).

Unit Price Sets the default price for applications. This is used in the [Savings Meter dialog box](#) to report the savings and the value of increased access provided by Express Meter.

Related topics

[Application Template... command](#)

[Application Edit... command](#)

[Application Add... command](#)

[Application Reset... command](#)

[Application Editor dialog box](#)

[Statistics dialog box](#)

Upgrade dialog box

The Upgrade dialog box allows you to upgrade your library from one library type to another.

A password is required to upgrade your library. If you were supplied with a password but did not enter it during the installation procedure, you can enter it in this dialog box at any time. If you were not supplied with a password, or wish to upgrade your library from an Evaluation Library to a Full Library, or increase the number of users supported for a Full library, you will need to obtain a password from Express Systems. Call Express Systems at 206-728-8300 and ask for Customer Service. There is no charge for a password which will upgrade your library from a Trial Library to an Evaluation Library.

Library serial number

The serial number of the current application library.

Library serial number

The serial number of Express Meter Editor.

License(s)

The number of users supported by the current application library.

Password

Enter your new password here. Note that this password is case-sensitive; that is, "Abc" is different than "ABC".

Info

Information about the current library and how to contact Express Systems.

Related topics

[Library types](#)

Users dialog box

The Users dialog box shows current and waiting users for an application.

Name Users will be shown for the application specified here. Use the drop-down list box to select another application.

Licenses The number of licenses assigned to this application.

Suite Licenses If the application is part of a suite, the number of suite licenses assigned to the suite.

Current User(s) The number of users currently using the application.

Current Waiting The number of users currently waiting for the application.

User: list The list of users currently using the application, with the date and time each started. Detached users are shown in magenta.

Waiting: list The list of users currently waiting for the application, with the date and time each started to wait.

Copy Copies the user list to the clipboard.

Quit Waiting Removes the selected user from the waiting list.

Related topics

[Application Users... command](#)

Library types

There are four types of libraries used by Express Meter.

Sample libraries contain sample application entries, usage statistics, reports, charts, user lists, etc. A sample library is included with Express Meter, installed by default in the SAMPLE subdirectory of the initial library directory. Sample libraries allow you to view samples of all of statistics, graphs, and reports available using Full libraries. Samples libraries can not be used to meter applications and can not be modified.

Trial libraries are those created using the Library New... command. These libraries can be used by an unlimited number of users for a period of 30 days. Summary information on these libraries is available using the Library Statistics... command. Detailed information, including detailed Savings Meter information, and all application statistics, reports, and graphs, is not available in Trial libraries. Trial libraries can be upgraded to Evaluation Libraries or Full libraries by calling Express Systems for a password. There is no charge to upgrade a Trial Library to an Evaluation Library.

Evaluation libraries are created by upgrading Trial libraries with a password available from Express Systems (at no charge). These libraries can be used by an unlimited number of users for a period of 60 days. All summary and detailed information is available in Evaluation libraries. Evaluation libraries can be upgraded to Full Libraries by calling Express Systems for a password.

Full libraries may be created by Install, or can be upgraded from Trial or Evaluation libraries with a password available from Express Systems (at a charge corresponding to the number of users which can access the library). There is no time limit on the use of these libraries. All summary and detailed information is available in Full libraries. Full libraries can be upgraded to allow access to more users with a password from Express Systems.

To obtain a password to upgrade your library, call Express Systems at 206-728-8300 and ask for customer service.

Related topics

[Library New... command](#)

[Library Statistics... command](#)

[Upgrade dialog box](#)

[Commands](#)

[Dialog boxes](#)

INI switches

There are several optional switches which may be placed in either APPLIB.INI or a particular users HDC.INI. If placed in APPLIB.INI, the switches will affect all users using that APPLIB.INI. If placed in HDC.INI, these switches will only affect the user using that HDC.INI. If placed in both, the switches in HDC.INI will override those in APPLIB.INI.

```
[hDC Application Librarian]
Library=n:\sales\applib
AppWarn=0
TrueName=0
UserInst=quiet
DosClientQuiet=0
UseNetwareNetUserName=1
```

- Library** Use this in a particular user's HDC.INI to override the default library specified in APPLIB.INI.
- AppWarn** Set this to 0 to disable the message Express Meter gives when the library can't be found or has expired. The default is 1.
- TrueName** Set this to 0 to disable truenamematching, when a full pathname is specified for an application. Truenamematching allows Express Meter to correctly meter a copy of an application, even if users access it using different drive mappings. If truenamematching is disabled, a copy of the application will be metered only if its pathname matches. For example, if you specify F:\APPS\APP.EXE to be metered, but a user launches this same file using a different drive mapping, for example G:\APPS\APP.EXE, the launch will be metered if truenamematching is enabled but not if it is disabled. Conversely, if you specify F:\APPS\APP.EXE to be metered and a user launches F:\APPS\APP.EXE on a different server, it will be metered if truenamematching is enabled but not if it is disabled. The default is 1, which enables truenamematching.
- UserInst** Set this to *quiet* to suppress the messages given by the workstation installation programs when installing or updating Express Meter on a workstation. If the messages are disabled, the installation or update will not take place immediately it will take place the second time the user runs Windows after the installation. The default is *verbose*, which causes the workstation installation to display messages and to take effect immediately.
- DOSClientQuiet** Set this to 0 to enable the message DOS Client gives when an application can't be launched. The default is 1.
- UseNetwareNetUserName** Set this to 1 to use the Netware username in DOS Client. The default is 0.

Sample libraries contain sample application entries, usage statistics, reports, charts, user lists, etc. These libraries are included with Express Meter, installed by default in the SAMPLES subdirectory of the initial library directory. These samples libraries can not be used to meter applications and can not be modified.

Trial libraries are those created using the Library New... command. These libraries can be used by an unlimited number of users for a period of 30 days. Summary information on these libraries is available using the Library Statistics... command. Detailed information, including detailed Savings Meter information, and all application statistics, reports, and graphs, is not available in Trial libraries. Trial libraries can be upgraded to Evaluation Libraries or Full libraries by calling Express Systems at 206-728-8300 for a password. There is no charge to upgrade a Trial Library to an Evaluation Library.

Evaluation libraries are created by upgrading Trial libraries with a password available from Express Systems (at no charge). These libraries can be used by an unlimited number of users for a period of 60 days. All summary and detailed information is available in Evaluation libraries. Evaluation libraries can be upgraded to Full Libraries by calling Express Systems at 206-728-8300 for a password.

Full libraries may be created by Install, or can be upgraded from Trial or Evaluation libraries with a password available from Express Systems (at a charge corresponding to the number of users which can access the library; call Express Systems at 206-728-8300 for more details). There is no time limit on the use of these libraries. All summary and detailed information is available in Full libraries. Full libraries can be upgraded to allow access to more users with a password from Express Systems.

A collection of applications which shares a single concurrent license, such that using any of the applications prevents licensed usage of the others.

A user that has manually checked out an application license, typically because the workstation will be removed from the network for a period of time (for example, a laptop).