



Introduction

[Introducing DigiCard](#)

[Who Benefits from DigiCard?](#)

[Why is DigiCard Effective?](#)

Using DigiCard

[Getting Started](#)

[DigiCard Interface](#)

[Tips and Tricks](#)

Registering DigiCard

[Benefits of Registration](#)

[How to Register](#)

Obtaining Support

[Troubleshooting Section](#)

[How to Contact the Author](#)

Release Notes

[Licensing Agreement](#)

[Distributed Files](#)

[System Requirements](#)

[What's New](#)

Copyright (c) 1994, Robert L. Chen



Introducing DigiCard

Living in the information age, we benefit tremendously from the abundance and the accessibility of information. Global communication, modern medicine, and computers are just few of the endless examples of information age products and services that significantly improve the quality of our lives.

Because information is valuable, the way you work is largely dictated by its constantly changing and abundant nature. Your ability to absorb, assimilate, and communicate information hence dictates the success of your work. Whether you are in school or you are a working professional, you must deal with a large amount of vital information in a timely and effective manner.

Did you know that exams, job training, business procedures, and sales presentations all share common traits? They do: the more you know, the better off you are. And the more you can remember and integrate the information vital to your work, the better you become at solving problems. The purpose of DigiCard, then, is to help you excel and put you ahead.

Simply think of DigiCard as a free-form flash card program, designed with power in mind. DigiCard lets you create flash cards and assimilate and memorize your customized information in a variety of effective ways. And DigiCard lets you accomplish this via a smooth, friendly interface. This means that you can transform a large amount of information into your personal knowledge base faster and better than ever before.

Whether you are memorizing a vocabulary list or mastering the national medical board, DigiCard makes learning a much less painful and even a fun and rewarding experience!



Who Benefits From DigiCard?

Students

If you are a student, DigiCard will become your best friend.

- n DigiCard will help you decrease your study time, increase retention and boost your grades. One DigiCard user is able to consistently achieve high scores on her major college exams. This is quite a significant improvement considering she used to be a B student!
- n Use DigiCard to memorize key facts and salient points for smooth and successful speeches and presentations.

Professionals

Here are examples of how DigiCard can benefit you professionally:

- n Preparation for state and national board exams for brokers, insurance agents, engineers, doctors, lawyers, CPAs, and other professionals.
- n Memorization of procedures and protocols.
- n Knowledge of product information and facts.
- n Improvement in speeches and presentations.
- n Facilitation of on-the-job training.

Uses of DigiCard are only limited to your imagination!



Why is DigiCard Effective?

DigiCard is an effective learning tool to help you save time and improve your everyday academic and professional life. Here are seven reasons why:

- n DigiCard is interactive; you are now participating in the learning process rather than being just a passive observer (i.e., reading books and listening to lectures).
- n DigiCard presents your learning materials to you in six possible ways. You decide what method is best for you and your particular subject.
- n The key to learning is repetition. DigiCard greatly facilitates and accelerates this process for you.
- n The prerequisite to understanding is memorization. DigiCard not only helps you memorize your material, it encourages your mind to integrate the information. This occurs because the human mind has a great tendency to create a conceptual framework around related ideas.
- n Even the act of making flash cards reinforce learning. The mental task of deciding whether to include or exclude information from a card and the act of typing serve as two different modalities to complement your learning.
- n DigiCard lets you use time efficiently; all of your learning and reviewing time can be used to master cards containing difficult or unfamiliar concepts when you discard those that you know well.
- n DigiCard stimulates your recall time and efficiency with the automatic presentation feature (Card Shooter). You can now play games using your learning material as you try to beat the clock to the answers!



Getting Started

[See Also](#)

While DigiCard is easy to use, the following sections are designed to make sure you get the most out of DigiCard. We will begin with an overview that will get you acquainted with the basic components of the program. Then, we will go through a simple exercise and make your first DigiCard file. The sample file "States and Capitals" is provided to demonstrate the various ways you can review your learning materials.

DigiCard consists of two modules, the Editor and Viewer. The Editor allows you to make up your flash cards. That is, it lets you enter the questions, answers, and keywords. You can edit and revise any information in your DigiCard file at any time using the Editor.

The Viewer presents to you the cards you have made using the Editor. The Viewer is flexible; you can instruct the Viewer to present your cards in ways that match your study style, the subject matter, or even your mood. For instance, the Viewer can show you your cards by three styles of presentation (Sequential, Random, and KeyLink). Or you might decide to reverse the order of the usual question-then-answer format to that of an answer-then-question format (a-la-Jeopardy). Together, you have six different presentation schemes, which are designed to significantly improve the way you memorize and integrate information. Time is spent efficiently while reviewing, because when you discard those cards that you know well, you are studying only unfamiliar concepts and saving valuable time. Since the whole process is interactive, studying no longer has to be boring!

In the next two sections are two tutorials to get you acquainted with Editor and Viewer functions. When you strike out on your own, remember that help is with you every step of the way. If there is an object on the screen you have questions about, just point to it and look at the status box located at the right hand side of the tool bar for a brief description. If you are still stuck, just hit the F1 key.

[Tutorial 1: A Simple Exercise](#)

[Tutorial 2: Sample File "States and Capitals"](#)

See Also...

[Presentation Style](#)

[Presentation Format](#)

Presentation Style

[Sequential](#)

[Random](#)

[KeyLink](#)

Sequential Style of Presentation

- n Cards are presented sequentially, from the first card to the last.
- n This is the default presentation style.
- n Tip: Use this style of presentation for initially reviewing your cards or for subject matters that are sequential in nature (i.e., preparing for oral presentations).

Random Style of Presentation

- n Cards are presented to you randomly from a constantly shuffled deck.
- n Tip: Randomly presented cards, over time, fosters associative learning. The random nature will provide new points-of-view and allow your mind to integrate related information much more quickly than the traditional method of study.

KeyLink Style of Presentation

- n Although keywords are optional, some of your cards must contain one or more keywords in order to take advantage of KeyLink presentation.
- n In KeyLink, DigiCard surveys all of your cards and group your cards together according to keywords. DigiCard then randomly selects a group at a time for presentation. See tutorial 2 in this help file for a demonstration of the KeyLink feature.
- n The frequency at which a group is selected for KeyLink presentation is proportional to the number of cards the group contains. Thus, you will see cards from a large group more often than small groups.
- n Tip: KeyLink is ideal for reviewing related concepts in groups. Viewing related cards in groups stimulates the formation of a mental framework and ensures that you are seeing every card in the proper context.

Presentation Format

Question First

Answer First

Question First Format

- n The question comes before the answer.
- n This is the default presentation format.

Answer First Format

- n Exact reverse of the question first format - answer comes first, then question. Just like Jeopardy.
- n Tip: Ideal for definitions and other short answers. The reversal is especially beneficial for reinforcing your knowledge of the subject matter at hand.



Tutorial 1: A Simple Exercise

To make it easier to follow, select 'Print Topic' from the File menu for a printout.

This section will help you get started making your first DigiCard file and to acquaint you with the Viewer. Simply follow the steps below:

- 1 Using your learning material, let us begin by making a file of several cards. From the File menu, select 'New.' In the Editor, click once on the window labeled 'Question.' You will now see the blinking cursor in the question window. Now type in your first question.
- 2 After you enter the question, you can either hit the tab key or click once on the window labeled 'Answer.' The blinking cursor is now in the answer window. Now answer the question you have posed. Take care to phrase your answer as concisely as possible, as this will increase the efficiency of learning and increase retention.
- 3 Now you are ready to save the card. Using the mouse pointer, click on the 'Save' button. When the contents of the card is saved to disk, the button will change to 'New Card.' Click on this button.
- 4 At this time, note that the toolbar will inform you that you are on "Card 2 of 2." Repeat steps 1 through 4 several more times. Save the file by selecting 'Save As' under the File menu and provide a name for your DigiCard file.
- 5 When you have about five cards, we are ready for a demonstration of Viewer features. Switch to the Viewer module by clicking on the snowflake icon (between the delete and left arrow buttons).
- 6 In the Viewer, you will notice right below the tool bar the word "Sequential." This indicates that the sequential presentation style is currently active. Use sequential presentation for reviewing your newly created cards, making sure the questions and answers are the way you like them to be.
- 7 Begin your review. To see the answer, push the 'Show Answer' button. You will notice that the label changes to 'Next'. Push this button when you are ready to move on.
- 8 Repeat this process for all of your cards. At any time if you want to edit your card contents, double click on the Viewer window.
- 9 Now we will try out the random style of presentation. Push the 'Options' button and select 'Random'. Press OK.
- 10 Notice that card presentation is totally randomized now. Randomly presented cards, over time, fosters associative learning. Whenever you encounter a question, try hard to state the answer before you go on to the next card.
- 11 As you go through your cards a few cycles, you will notice that information will begin to stick. Before you disable a card containing information that you think you know well, make sure you see the card several more times to solidly reinforce the learning. To disable a card, click the 'Discard' button.
- 12 When all cards are disabled, you will be notified of this and DigiCard will automatically enable all cards. Before we end this tutorial, try the reverse question-answer format. Push the 'Options' button and select 'Answer First.' Now studying can be just as challenging as playing Jeopardy!

Congratulations! You have completed your first DigiCard tutorial. As you complete your file, note that you can specify the start up configuration by setting and saving your preferred options (i.e., Random and Answer First). You can even set the start up module for this file to Viewer, so that the next time the file is loaded, you will be ready for review (go to the Options menu and set the start up module to Viewer).



Tutorial 2: KeyLink Demonstration

To make it easier to follow, select 'Print Topic' from the File menu for a printout.

If you are new to DigiCard, be sure to go through tutorial 1 before beginning this one. In this tutorial, we are going to explore the KeyLink feature. In KeyLink, DigiCard surveys all of your cards and group your cards together according to keywords. KeyLink is ideal for reviewing related concepts in groups for maintaining the proper context.

The sample file "States and Capitals" illustrates the use of keywords in KeyLink presentation. Simply follow the steps below:

- 1 In this sample file, states are categorized by time zones. For instance, all of the cards representing states in the Eastern standard time zone have the keyword "Eastern" and likewise for the other states. From the File menu, open the file 'SAMPLE.CRD' in the directory containing the DigiCard program.
- 2 After the file loads, you will notice that the Viewer module is active for KeyLink presentation. As you place the arrow on the 'Show Answer' button, also note that the status window is displaying the word "KEY" followed by a time zone. This indicates the active keyword. In this case, keywords are time zones of the United States.
- 3 As you browse through the cards, DigiCard will present every state/capital located in the displayed time zone. After the last state/capital of the time zone is presented, DigiCard will randomly select another group of states with their capitals by time zone. Try this for yourself.
- 4 If you prefer, you can keep the active keyword from being displayed by selecting 'Hide Keyword' from Viewer options.
- 5 The way grouping cards together by keywords is accomplished is really very simple. Switch over to the Editor and go to card # 1. There are 51 cards total and the states are in alphabetical order. Navigate through the deck by using the next card button. Notice that with a few exceptions, every card contains only one keyword. See if you can spot the the states that reside in two time zones.
- 6 Switch back to the Viewer. Let's turn this exercise into a game. Click once on the Shooter button. You will notice that each side of every card is now displayed for two seconds. Now you can test your knowledge of US States and Capitals against the clock! Press the Shooter button (now labeled 'Stop') to end Card Shooter.

As you can see, you can easily add keywords to your cards and take advantage of KeyLink presentation. Viewing related cards in groups is advantageous because it stimulates the formation of a mental framework and ensures that you are seeing every card in the proper context. The Card Shooter feature adds a new level of challenge as it enhances your learning.



DigiCard Interface

The following sections will explain to you the purpose of the various visual elements in DigiCard. Choose a section below and click on an object you need help with:

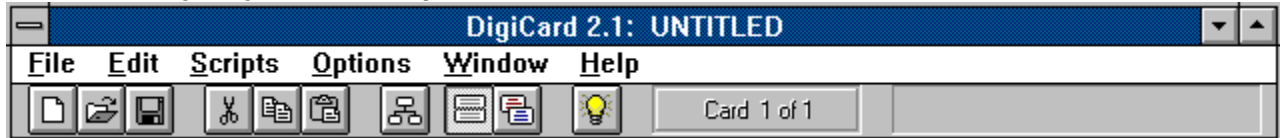
[Menu and Tool Bar Interface](#)

[Editor Interface](#)

[Viewer Interface](#)

Menu and Tool Bar

Click an object you need help on...





Editor Interface

[Menu and Tool Bar help](#)


Click an object you need help on...

DigiCard Editor

Key 1 Key 2

Question

Answer

Search *Save* *Delete*  < > *Scripts*



Viewer Interface

[Menu and Tool Bar help](#)

Click an object you need help on...

The image shows a software window titled "Sequential [100% Enabled]". Inside the window, there is a large white area labeled "Question" with a vertical scrollbar on the right side. Below the question area is a toolbar containing five buttons: "Show Answer" (with a blue underline), "Repeat" (with a grey underline), "Discard" (with a red underline), "Shooter" (with a green underline and a yellow sun icon), and "Options" (with a grey underline).



Tips and Tricks

Read-Only Access

Sometimes after you compose your deck of cards, you may wish to lock the contents so that information could not be accidentally altered. DigiCard provides a way for you to accomplish this. To change the read-only attribute for a particular DigiCard file, use a text editor and open the corresponding .CFG file. Under the [Attributes] section you will find the line:

```
ReadOnly=False
```

Change 'False' to 'True' to enable read-only access for the file. Reload the file for the change to take effect. Please note that with the read-only attribute activated you also benefit from faster data access.

Network Usage

DigiCard is designed to work well within a network environment. DigiCard can either be installed on a central file server or on individual workstations.

To share a DigiCard file across a network (multi-user access), its exclusive attribute must be changed. To do this, use a text editor and open the corresponding .CFG file. Under the [Attributes] section you will find the line:

```
Exclusive=True
```

Change 'True' to 'False' to enable multi-user access to the file. Reload the file for the change to take effect.

Note: It is highly recommended that the read-only attribute is set to true when multi-user access is in effect. This will prevent data from being altered.

Changing Fonts

You can substitute the fonts used in the DigiCard text windows and printouts with those of your own. Examples of fonts that can be used under DigiCard include foreign languages, symbols from science, math, and engineering, and anything else available as a Windows-supported font.

To change the font, use a text editor and open DIGICARD.INI in your DigiCard directory. Under the [Preferences] section you will find the lines:

```
QuestionFontName=Arial  
AnswerFontName=Arial  
Key1FontName=Arial  
Key2FontName=Arial  
TextBoxFontName=Arial
```

Simply change the default font from Arial to your preferred font for any or all of the Editor text windows. You do not need to separately set the Viewer and printer functions, since they will automatically adjust to the new fonts set for the question and answer windows.

Running DigiCard off a Floppy

It is possible to run DigiCard off a floppy disk (i.e., on school computers). To do this, you must copy DIGICARD.EXE, VBRUN300.DLL, plus all of the .VBX and .DLL files associated with DigiCard onto a single floppy disk (please see 'Distributed Files' section). However, the performance of the program will be very sluggish. This is due to the slow nature of the floppy drive and the frequent system file accesses DigiCard need to perform for its basic and database functions.

If possible, perform a complete install of DigiCard. If this cannot be done due to network regulations, try to copy the contents of the floppy disk mentioned above to a single directory on a local hard drive (i.e., C:\DIGICARD). If all else fails, tell the system administrator at your organization what a great program you have and that you would really like to install it and make it available for everybody!



Benefits of Registration

When you register DigiCard, you receive many benefits. These include:

- n Removal of the start-up introductory window.
- n Ability to print (with preview) any or all cards.
- n License to use ALL future releases of DigiCard.
- n Copy of the latest registered version of DigiCard promptly mailed to your address.
- n "Strategies for Success," a companion guide to DigiCard which is loaded with helpful tips to boost your academic and professional performance.
- n One year free CompuServe / Internet e-mail / BBS / US Mail support.

Registration fee is only US \$20 (S&H included!). If you would like the author to contribute 40% of the received registration fee to charity, please provide the name of the organization. Thank you!



[Click Here to Register!](#)

How to Register

You have a choice to either register DigiCard through CompuServe or by US mail. Simply click on a choice below:



[Registration via CompuServe](#)



[Registration via US Mail](#)



Registration via CompuServe

- n To register through CompuServe, GO SWREG and select registration ID # 2211.
- n The registration fee of \$20 per copy will be billed to your account.
- n The latest registered version of DigiCard will be mailed the next business day.
- n Please contact the author regarding which charity you'd like to benefit through your registration.

[How to Contact the Author](#)



How to Contact the Author

The author is dedicated to the success of DigiCard users. For product support and/or suggestions on how DigiCard can be improved, you may contact the author, Rob Chen, by any of the following ways:

- n CompuServe ID: 73542,1232
- n Internet Address: rchen@orion.oac.uci.edu
- n BBS: Chips+ Connection (11 nodes)
1-714-556-3207
1-714-556-3208
1-714-760-3265
- n US Mail: 6014 Verano Place
Irvine, CA 92715-3159

[About the Author](#)

About the Author

Hi, my name is Rob Chen and I am currently attending graduate school at University of California, Irvine. I aspire one day to help mentally retarded children by way of medical care and research. I am now in my second year of study.

DigiCard is initially the product of interest in helping my classmates and myself fulfill a need in having an effective learning tool. Because of the success of DigiCard, I was encouraged to enhance and release the program to the general public. DigiCard is charityware because I firmly believe that there are many worthwhile causes that are in need of support. DigiCard thus fulfills both my desire to help needy people and environmental concerns and to create a good program that helps people study and achieve their goals.

I appreciate any suggestions concerning this program. Please contact me and let me know of your experience.



Registration via US Mail

To print the following form, select 'Print Topic' from the File menu.

Mail-In Form

- n Please register me for DigiCard and send me the latest version. I am sending a check or money order for the amount of US \$20 (per copy).

Name: _____

Occupation: _____

Company: _____

Address: _____

City: _____

State: _____ Zip: _____ Country: _____

Telephone # _____ (optional) Number of Copies: _____

- n Send me disk format: _____ 3.5", 720k _____ 5.25", 1.2 meg
(check one) _____ 3.5", 1.44meg

- n Comments / Suggestions:

Please send completed form and registration fee (payable to 'Rob Chen') to:

ROB CHEN
6014 VERANO PLACE
IRVINE, CA 92715-3159



Troubleshooting Section

This section contains most of the errors users encounter while installing and using DigiCard. If you need technical assistance, please refer to this section first. If you are still stuck, please do not hesitate to contact the author for help : -)

Error During Setup

If an error is encountered during the setup process, the nature of the error will be reported to you by Setup. Errors encountered during setup are mostly related to the inability of the setup program to overwrite a previous version of one of the system files. You can fix this by renaming the extension of the file in question to .BAK (i.e., COMMDLG.DLL to COMMDLG.BAK) and re-installing DigiCard. To access the file in question, log onto your \WINDOWS\SYSTEM directory either from DOS or from File Manager.

Error At Runtime

In order for DigiCard to execute properly, all of the system files outlined in the 'Distributed Files' section (i.e., all .VBX and .DLL files) must be present in order to run. The .VBX files are normally installed to your DigiCard directory and the .DLL files to your \WINDOWS\SYSTEM directory. If for whatever reason a file is missing or a previous version is not replaced by DigiCard Setup, DigiCard will not run. The nature of the error, along with the missing file, will be reported to you. You can fix this by renaming the extension of the file in question to .BAK (i.e., COMMDLG.DLL to COMMDLG.BAK) and re-installing DigiCard.

If you encounter an abortive error while opening a DigiCard file (i.e., SAMPLE.CRD), make sure file sharing is activated on your computer. Using a text editor, check your AUTOEXEC.BAT file for SHARE.EXE. If Share is not present, add the following line to AUTOEXEC.BAT (assuming your DOS directory is in the path):

```
SHARE.EXE /L:500
```

And reboot your computer. This should fix the problem. Please note that file sharing is innate to Windows for Workgroups and you do not need to load SHARE.EXE.



Licensing Agreement

Evaluation

Thank you for using DigiCard. Please note that you may use DigiCard for a period not to exceed 45 days for the purpose of evaluation. After this period, the author asks that you either register or discontinue the use of DigiCard. Registration of a single copy of DigiCard entitles the registrant the right to run it on a single computer.

Although the author makes his every best effort to ensure that DigiCard performs optimally and error-free prior to releasing the software to the general public, users should read carefully and understand the disclaimer below before using DigiCard.

Disclaimer of Warranty

THIS SOFTWARE AND ON-LINE DOCUMENTATION ARE PROVIDED "AS IS" AND WITHOUT WARRANTIES AS TO PERFORMANCE OF MERCHANTABILITY OR ANY OTHER WARRANTIES WHETHER EXPRESSED OR IMPLIED. BECAUSE OF THE VARIOUS HARDWARE AND SOFTWARE ENVIRONMENTS INTO WHICH THIS PROGRAM MAY BE PUT, NO WARRANTY OF FITNESS FOR A PARTICULAR PURPOSE IS OFFERED. GOOD DATA PROCESSING PROCEDURE DICTATES THAT ANY PROGRAM BE THOROUGHLY TESTED WITH NON-CRITICAL DATA BEFORE RELYING ON IT. THE USER MUST ASSUME THE ENTIRE RISK OF USING THE PROGRAM. ANY LIABILITY OF THE AUTHOR WILL BE LIMITED EXCLUSIVELY TO PRODUCT REPLACEMENT OR REFUND OF PURCHASE PRICE. USAGE OF THIS SOFTWARE CONSTITUTES AS ACCEPTANCE OF THE TERMS OF WARRANTY.



Distributed Files

The following are files packed into the file zip file for distribution. If any of the following files are missing or damaged, please contact the author for replacement.

- | | | |
|---|--|--|
| n | README.TXT | Read this file first. |
| n | FILE_ID.DIZ | BBS description. |
| n | VENDOR.TXT | For shareware distributors and Sysops of on-line services. |
| n | DIGICARD.EX_
DIGICARD.HL_ | DigiCard executable program and On-line help file. |
| n | SAMPLE.CR_
SAMPLE.CF_ | Sample file "States and Capitals" and Sample file configuration. |
| n | SETUP.EXE
SETUP.LST
SETUP1.EX_
SETUPKIT.DL_ | DigiCard 2.0 setup files.
Run SETUP.EXE to install DigiCard. |
| n | CMDIALOG.VB_
INICON3.VB_
SPIN.VB_
THREED.VB_
COMMDLG.DL_
DDEML.DL_
MSAES110.DL_
MSAJT110.DL_
VBDB300.DL_
VBPRINT.DL_
VER.DL_ | DigiCard system files.
All files must be present for DigiCard to run. |

System Requirements

The minimum system configuration required to run DigiCard 2.0 is:

- n 4 megs RAM.
- n 2 megs disk space.
- n VGA graphics.
- n Microsoft Windows 3.x.
- n A copy of VBRUN300.DLL in your WINDOWS\SYSTEM directory.



Revision History

VERSION 2.1 (5-1-94)

New Features:

- n Undo typing feature to ease card composition and editing.
- n Arrange icons function for aesthetics.
- n Card Shooter -- "hands free" presentation tool -- automatic timed presentation.
- n File menu open items. The four most-recently opened files are represented sequentially under the file menu to speed up file opening.
- n Editor Scripts available now as menu choices.
- n Fonts - now you can use your favorite Windows fonts under DigiCard. Please see 'Tips and Tricks' section for instructions on how to change fonts.
- n Read-only access. Please see 'Tips and Tricks' section for instructions on how to make files read-only.
- n Network support. Please see 'Tips and Tricks' section for instructions on how to set up DigiCard for multi-user access.
- n Print (registered version). Supports printing of any or all cards on Avery form 5388 or on any 8.5" x 11" paper. Preview allows you to format and edit cards to your liking before printing.

Bug Fixes:

- n Viewer windows now support up to 32k bytes of text, rather than 1k. (Oops!)
- n GPF when opening large files now fixed.
- n 'Object variable not set' error followed by termination of DigiCard when opening is now eliminated. This error occurred on some users' machines because SHARE.EXE was not loaded.
- n SHARE.EXE is no longer needed, unless 'Exclusive' (in the appropriate .CFG file) is set to false (i.e., networked access).

Changes

- n To access the 'Go To...' feature, click once on the card number indicator on the toolbar (i.e., 'Card 1 of 51'). The 'Go To...' button is replaced by the 'Scripts' button on the Editor and 'Shooter' button on the Viewer.
- n DIGICARD.INI is now located in the DigiCard program directory (you may now delete the DIGICARD.INI file located in the \WINDOWS directory).
- n All files ending with .VBX are now installed to the DigiCard program directory. This is done because some users reported problems with the Setup program not being able to overwrite older versions of these files.

VERSION 2.0a (4-10-94)

Bug Fixes:

- n [Escape] key now exits forms.

- n Discard record now written to the appropriate .CFG file only. Previously it was written unnecessarily to both the .CFG file and DIGICARD.INI.
- n Changes do not take effect now when cancel is selected from Viewer Options menu.
- n When switching from KeyLink to other presentation styles while enabling all cards, not all cards were enabled. This is now fixed.
- n Better error trapping when attempting to open non-DigiCard files.

VERSION 2.0 (3-15-94)

New Features:

- n Implemented Microsoft Access 1.1 engine for data storage and handling. All DigiCard files are convertible to other database file types supported by Access (i.e., dBase, Fox Pro, etc.).
- n Added two keyword fields per card.
- n Added function for rapid search based on keywords.
- n Enhanced the presentation module by adding KeyLink presentation.
- n Simplified learning for novice users by adding context-sensitive help. This was done both in the form of status-line description of buttons and Windows help file when activated using the F1 key.
- n Added the ability for the user to specify the default module upon start-up.
- n Implemented a configuration file containing discard information and Viewer options unique to each DigiCard file.

Answer Window

- n Contains an answer or response to the posed question.
- n Text can be up to 32,000 characters in length.
- n To insert a Tab: [CTRL][ALT] & [TAB]
- n Tip: make the answer as direct and concise as possible, as this will enhance learning and retention.

Auto-Discard

- n Click once to check, again to uncheck.
- n Auto-discard allows you to see each card once per round of presentation when you are using Random or KeyLink.
- n All cards are automatically enabled when all cards have been discarded, at which time the cycle can start again.
- n Tip: This is especially useful for the beginning of a study session or before an exam, when you may want to see every card several times in a short time frame.

Cancel

Disregard all changes and exit.

Card Number Indicator

- n This displays the current card number and the total number of cards in your DigiCard file.
- n Click once to go to another card.

Clear All Scripts

Checking this box will clear all five Editor scripts.

Control Box

To exit DigiCard, click on this twice.



Converting from Other Programs

If you have already invested time and energy into building flash cards for another program, converting the files to DigiCard format may be a relatively painless process. If your flash cards are saved to ASCII text files, just follow the simple steps outlined below:

- 1 From the File menu, select 'Import Text'.
- 2 Open your flash card file. TextPad will be activated automatically and you will see your file contained within.
- 3 From the Options menu, select 'Drag and Drop Editing' (if it is not already checked).
- 4 Highlight the question you want to incorporate into DigiCard. Then simply drag the question and drop it into the question window.
- 5 The process for the answer is the same. When you are done with the card, press the 'Save' and then the 'New Card' buttons.
- 6 Repeat steps 4 and 5 for other question-answer pairs.

Please contact the author if you would like to see a converter for your popular flash card program with the next release of DigiCard.

Copy

- n Copies highlighted Editor text to the Windows clipboard.
- n Clipboard contents can be shared with other applications.

Cut

- n Cuts out highlighted Editor text to the Windows clipboard.
- n Clipboard contents can be shared with other applications.

Delete

n Deletes current card from file.

n **WARNING:** Once your card is deleted from the file, it cannot be recovered. Take care in confirming deletes.

Discard

- n Disables the current card.
- n Clicking on this button temporarily inactivates the current card and keeps it from being displayed in Viewer presentations (note: this is not the same as delete).
- n You can enable inactivated cards by either toggling the light bulb on (the card in question must be current) or by selecting the "Enable all cards" check box under Viewer Options.
- n Tip: Your study time can be used most efficiently when you discard those that you have already mastered. This allows you to use all of your time learning new information.

Edit Menu

Cut, copy, and paste functions in DigiCard just like in other Windows applications. For instance, you may paste information from a word processor document into the DigiCard Editor and vice versa.

Undo Typing

- n Undo text modifications since the last [backspace] key.
- n Select again to undo the first undo operation.
- n Shortcut: [CTRL] [Z]

Cut

- n Cuts out highlighted Editor text to the Windows clipboard.
- n Shortcut: [CTRL] [X] or [SHIFT] [DELETE]

Copy

- n Copies highlighted Editor text to the Windows clipboard.
- n Shortcut: [CTRL] [C]

Paste

- n Pastes Windows clipboard text to the Editor.
- n Shortcut: [CTRL] [V] or [SHIFT] [INSERT]



Editor Scripts

Click an object you need help on...

Editor Scripts

1	<input type="text"/>
2	<input type="text"/>
3	<input type="text"/>
4	<input type="text"/>
5	<input type="text"/>

Clear All Scripts

Enable All Cards

- n Check this box off when you want to enable all of your cards for Viewer presentation.
- n This option is available when one or more cards are inactivated.
- n Tip: You may enable or disable individual cards by turning the light bulb on or off, respectively. The light bulb is located on the toolbar, and the easiest way to do this is to to navigate through your deck of cards using the the Editor.

File Menu

DigiCard file structure is based on the Microsoft Access 1.1 database engine. Using Access, DigiCard data can be manipulated and translated to many other database formats (i.e., dBase III, IV).

New

n Exit current file and create an untitled new file.

Open

n Open file. By default, DigiCard files have the .CRD extension.

Save As...

n Save your current DigiCard file under a new filename.

Import Text

n Open a text file into TextPad.

n Text file must be under 32k and devoid of hard page breaks.

Print (Registered Version)

n Prints three 3" x 5" cards onto Avery form 5388 (or an 8.5" x 11" sheet of paper).

n Prints all cards, current card, or a range of cards.

n Preview allows you to format and edit text before printing.

Exit

n Exit DigiCard.

File Items (1-4)

n Recently opened files, 1 = most recent.

n Selection opens the file.

File Name

Indicates the name of the current DigiCard file.

Fixed Interval

- n Select this option if you want a single shooter interval (the time between turnover).
- n Fixed interval is defined in terms of seconds. Default is 5 seconds.
- n This is the default Card Shooter mode.

Go To...

- n Navigates the database of cards contained in the opened DigiCard file.
- n Type in number directly or use the spin control to select a card.

Help Menu

You are currently in DigiCard help.

Press F1 for help on Windows Help.

Hide Keyword

- n Click once to check, again to uncheck.
- n By default, the active keyword is automatically displayed in the status window during KeyLink presentation.
- n Hide keyword will prevent the active keyword from being displayed.
- n This option is available when using KeyLink.

Keyword

- n Keywords are necessary if you want to take advantage of KeyLink style of presentation. You can also search through the file for particular cards by using the search function in the Editor.
- n You may enter one or two keywords per card.
- n Tip: A keyword should be a word that captures the essence of the card containing it.

Discard Status

- n Light on: current card is active for Viewer presentation.
- n Light off: current card is inactive.
- n You can toggle the discard status of the current card by turning the light bulb on or off.

Maximize

Expands the main DigiCard form to fill the screen.

Minimize

Reduces the active module to an icon.

New DigiCard File

Exits current DigiCard file and creates an untitled new file.

Next Card

- n Sequentially forward navigates the deck of cards.
- n Any changes made to the current card are saved automatically.

OK

Executes all changes and exit.

Open DigiCard File

By default, DigiCard files have the .CRD extension.

Options Menu

Viewer Options

[Presentation Style](#)

[Presentation Format](#)

[Auto-Discard](#)

[Hide Keyword](#)

System Options

Startup Module

- n Selection of either Editor or Viewer will enable that module to start-up automatically when opening a DigiCard file.
- n This information is saved to the configuration file.

Drag and Drop Editing

- n Checking this option will allow drag and drop copying of highlighted text from one Editor window and pasting it to another.
- n Recommended for copying imported text to the Editor.

Monochrome Display

- n Check this option if you have a monochrome display.

Save Options

Saves all options. Viewer options are saved to .CFG file and DigiCard system options are saved to DIGICARD.INI.

Paste

- n Pastes Windows clipboard text to the Editor.
- n Clipboard contents may be from DigiCard or other applications.

Percent Enabled

- n Displays the percentage of cards that are currently active for Viewer presentation.
- n Ranges from 100% (all cards enabled) to 0% (all cards disabled).

Previous Card

- n Sequentially backward navigate the deck of cards.
- n Any changes made to the current card are saved automatically.



The current version of DigiCard supports printing of three 3" x 5" cards per sheet of paper (8.5" x 11"). The format is compatible with Avery 5388, available at most office supply and computer stores. As a good and inexpensive compromise, use heavy bond paper and turn border printing on (in print preview) for use as crop marks.

Print Dialog

All

Print all loaded cards.

Selection

Print the current card.

Pages

Print the indicated range of cards (pages = cards).

Print Preview

In print preview, you will see the question side of all the selected cards first, then the answer side. You will get a chance to edit each card before printing. For example, you may want to perform editing on particularly lengthy cards to keep the text within the 3" x 5" area. Or you may want to give a card the right look on paper by modifying the text layout. Any changes you make in the preview window will be restricted only to printing; the DigiCard database will not be modified in any way.

Print

Accept any changes and print the current side.

Print All

Print all cards without further preview.

Cancel

Abort printing and exit preview.

Print Border

While previewing the questions, you will have the chance to toggle border printing off and on (default = on). Leave border printing on if you are printing onto a plain sheet of paper. Turn off border printing if you are printing onto Avery 5388 index cards.

Note: Print is a registered feature.

Question Window

- n Contains a question or statement that will be elaborated upon in the Answer Box.
- n Text can be up to 32,000 characters long.
- n To insert a Tab: [CTRL][ALT] & [TAB]
- n Tip: make the question as direct and concise as possible. The desired effect is to have your question automatically trigger the answer in your mind.

Relative Interval

- n Select this option if you want the shooter interval (the time between turnover) to adjust according to the text length.
- n Relative interval is set by your reading speed (in words per minute). Default is 150 wpm.
- n If the relative interval is selected, the fixed interval becomes the minimum amount of time a question or answer will display before turning over.

Repeat

Redisplay the question.

Save

- n If new editing has occurred, the save button appears.
- n Click on the button to save changes and to update the Viewer.

New Card

- n Adds a new blank card to the deck.
- n The new card will be added to the end of the deck.

Save As...

- n Save your current DigiCard file under a new filename.
- n By default, DigiCard files have a .CRD extension.

Save Options

- n Checking this box off will allow all Viewer options to be saved to disk.
- n Viewer options for a particular DigiCard file are unique to that file. The next time you load a DigiCard file, all the saved settings will be retained.
- n The options configuration file has the same name as the corresponding DigiCard file with a .CFG extension.

Apply Script

- n Scripts can be applied only if you are currently in an Editor window.
- n A script can be applied to the active Editor window by either clicking on the appropriate numbered button or by hitting [SHIFT] and the corresponding function key (F1-F5).

Script Window

- n This time-saving feature is designed to save you from repetitive typing in the Editor.
- n A script contains commonly used words, phrases, sentences, etc. that you use to formulate your questions, answers, and keywords. For instance, you may preface many questions with the phrase "What is the significance of..." Having this phrase as a script allows you to apply it very quickly and thus save time.
- n To apply a script, first locate your cursor at the insertion point or highlight the text you want to replace. Then, select the 'Scripts' item on the menu and push the corresponding button.
- n Shortcut: Locate your cursor as above and press [SHIFT] and the function key that corresponds to your script (F1 to F5).

Scripts Menu

Edit Scripts

Brings up script editor.

Scripts

- n With the menu pulled down, selectable by number.
- n Shortcut: [Shift] [F1-5]

Scroll Bar

Scrolls text upward or downward.

Search

- n Finds card(s) based on keyword.
- n Editor searches through Key 1 field first, then Key 2.

Shooter Button

- n Card Shooter is a "hands-free" presentation tool -- automatic timed presentation.
- n Click once to start Card Shooter, again to stop.
- n Shooter intervals can be set under Viewer Options.

Show Answer / Next

- n If a question is on display in the Viewer window, clicking on this button will reveal the answer.
- n If an answer is on display, clicking on this button will advance to the next card. The card you get next will depend on the style of presentation (sequential, random, or KeyLink).

Status Window

- n When you have questions about screen objects, point to the object and the status window will display a short description.
- n Under KeyLink presentation, the status window will display the current active keyword.
- n Tip: Click to toggle help description on and off.

Switch to Editor Module

Activates the Editor Module.

Switch to Viewer Module

Activates the Viewer Module.

TextPad

- n Click to activate TextPad. Click again to deactivate.
- n TextPad is automatically activated when a text file is imported into DigiCard.
- n Use the TextPad to copy text directly into the Editor when making DigiCard files.
- n Tip: Use drag and drop editing to save time. To turn it on, check 'Drag and Drop Editing' on the Options menu.



Viewer Options

Click an object you need help on...

Viewer Options

Style	Format	Shooter
<input type="radio"/> Sequential	<input type="radio"/> Question First	<input checked="" type="radio"/> Fixed (sec)
<input type="radio"/> Random	<input type="radio"/> Answer First	<input type="radio"/> Relative (wpm)
<input type="radio"/> KeyLink	<input type="checkbox"/> Hide Keyword	<input type="checkbox"/> Enable All Cards
	<input type="checkbox"/> Auto-Discard	<input type="checkbox"/> Save Options

5

150

OK Cancel

Viewer Window

- n Shows questions in red, answers in blue.
- n Double-clicking the Viewer window activates the Editor and allows editing of the current card.

Window Menu

Arrange Icons

Arrange the Editor and Viewer icons to the lower left corner.

Editor

Switch to Editor Module.

Viewer

Switch to Editor Module.

