

About Modem Logger



v0.99f *release candidate 8*

This program automatically detects the modem's status and records the length and cost of your calls. The program uses API calls to monitor whether your modem is connected or not.

If you find any bugs, or if you have any great suggestions to improve this program, feel free to contact Kirys Tech 2000!

Glossary of terms

Dial-up client

Handshake time

Log File

Reset log file

Session time

Status LED

Old detect mode

Configuration

[Logging] [Program] [Misc]



Timed Sound

Makes the program play a sound every n minutes

If x second before applying cost is selected the sound is played x seconds before applying the next telephone charge where x is the number of minutes selected in the text box on the left.

Dial-Up Program

This option allows you to select your Dial-Up client, so you can run it from Modem Logger.

If you are a Windows NT User if you write *rasphone* into this text box will allow Modem Logger to launch NT DUN Dialer.

Make Compatible with Windows customizzation software

This check box allows other software to resize Modem Logger window, check this if you are using windows customization software like windowblinds, efx, illumination or others.

Old Detect Mode (ODM)

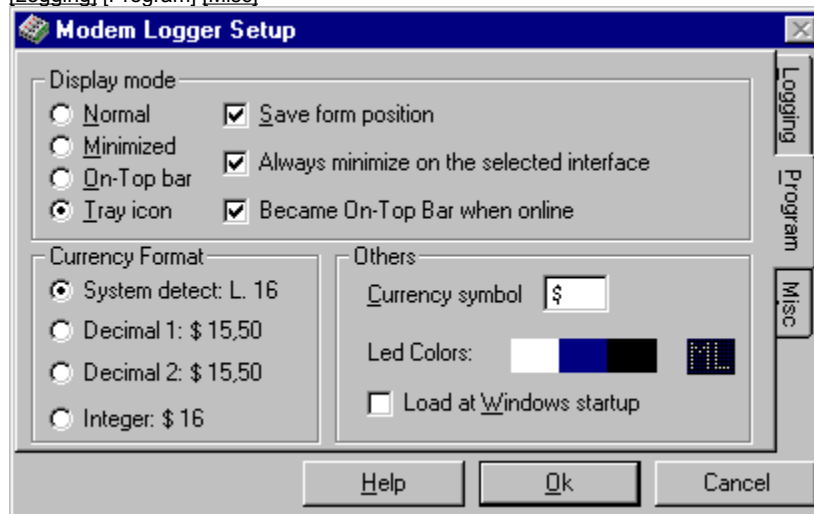
This is an hardware detection mode. Modem Logger directly called hardware to detect modem status.

This was the only detect mode since the introduction of Ras Detect Mode (RDM) in version v0.85.

This mode was incompatible with PCI and USB modem, while RDM works fine with all modems, so I decided to remove ODM support in v0.99a.

Configuration

[Logging] [Program] [Misc]



Display Mode

This option lets you select how the application shows itself when it is run:

Normal:

shows as a normal window

Minimized:

shows as an icon in the taskbar

Tray icon:

shows as an icon in the tray area of the taskbar (where the clock is)

On-Top bar:

shows as an always-visible bar at the top of the screen

Save form position:

Saves the position of the Modem Logger interfaces (Standard interface and On-Top Bar) so next time you load Modem Logger they are exactly where you left them.

Always minimize on the selected interface:

If this option is selected when you minimize Modem Logger Main windows with the standard minimize button it became the interface selected. If Normal or minimized is selected the minimize button works like this option disabled.

Became on top bar when online:

If this option is selected when you are online Modem Logger became the On-Top bar and it back to the tray icon when you are offline.

NB: this option is available only if you select the Tray icon Interface

Currency format:

Allows you to select your currency format

System detect is the preferred option for most systems but some Windows versions return erroneous information regarding the currency format used so you can select it manually as an integer or a decimal

Others

Currency symbol:

Enter here the currency symbol for your country (L., \$, ... etc.)

Leds Colors:

Allows to select the color of the leds, the first rectangle is the color of the alight led color, the second is the out led color, the third is the led background color. Just click on one of the rectangles to change its associated color.

Load at Windows StartUp:

If checked, the program automatically starts at Windows startup

Configuration

[Logging] [Program] [Misc]



Logging Options

Automatic log:

If checked, the program automatically monitors the selected communication port

Handshake time:

Here you can enter your average handshaking time, which will be included in the total time logged for the call

Log Time:

If checked, the program logs the connection time of calls

Log Cost:

If checked, the program logs the cost of calls

Allow manual logging:

If checked, the program is forced to display the start log button, so you can manually start a logging without be really connected. For example you can log a call you make to a friend.

The Log modem connection ONLY:

If Checked, forces the program to monitor only modem connections.

Show Next Charge Time

Disables The next Charging cost Display in all interfaces.

Logging File

Make Log File:

If checked, the program will write to the calls log file and the reset log file. It allows you to select two log file styles: Standard and Tabbed. Standard records all the information with a full description, which uses a few lines. Tabbed records the most important information on a single line, using tabs.

Cost Logging configuration

Modem Logger Configuration

Days	From	To	S.C.C.	Intermediate cost			Normal cost		
				Delay	Unit	Unit Cost	Delay	Unit	Unit Cost
All	08.00	18.30	151,00	0	0	0,00	0	220	151,00
All	18.30	08.00	151,00	0	0	0,00	0	400	151,00
Sat	13.00	24.00	151,00	0	0	0,00	0	400	151,00
Sun	00.00	24.00	151,00	0	0	0,00	0	400	151,00
None	00.00	00.00	0,00	0	0	0,00	0	0	0,00
None	00.00	00.00	0,00	0	0	0,00	0	0	0,00
None	00.00	00.00	0,00	0	0	0,00	0	0	0,00
None	00.00	00.00	0,00	0	0	0,00	0	0	0,00
None	00.00	00.00	0,00	0	0	0,00	0	0	0,00
None	00.00	00.00	0,00	0	0	0,00	0	0	0,00

NOTE: A unit is a length of time for which a certain cost is charged

Time Grid:

Days: The weekday/s when a particular unit is applicable

S.C.C.: Starting Call Cost: The service provider's fixed charge

From: Start time for the particular unit

To: End time for the particular unit

Intermediate Cost:

Only some countries use this method, it is a sort of different charging method for the first minutes.

To disable it set delay, unit and cost to 0.

Delay: The time, since the call start, after which this payment charge is applied

Unit: Length of the unit in seconds

Unit Cost: The charge per unit

Normal Cost:

To disable it set delay, unit and cost to 0.

Delay: The time, since the call start, after which this payment charge is applied

Unit: Length of the unit in seconds

Unit Cost: The charge per unit

Autoconfigure:

Starts the cost settings automatic configurer that can configure the time grid for the telephone companies of some countries by simply pushing a button.

Examples:

If every day you pay 10 for the first 3 minutes and then 5 for each minute, while on Sunday you pay 10 for the first 5 minutes and then 2 for each minute, it would be as follows:

Days	From	To	S.C.C.	Intermediate cost			Normal cost		
				Delay	Unit	Unit Cost	Delay	Unit	Unit Cost
All	00.00	24.00	10	0	0	0,00	180	60	5
Sun	00.00	24.00	10	0	0	0,00	300	60	2

If every day you pay 10 for the first 3 minutes, then 5 for each minute and then an hour after the call start

you pay 2 every minute, it would be as follows:

Time Grid										
Days	From	To	S.C.C.	Intermediate cost			Normal cost			
				Delay	Unit	Unit Cost	Delay	Unit	Unit Cost	
All	00.00	24.00	10	180	60	5	3600	60	2	

Main Interface Menus

[Minimize as] [Options] [Help]

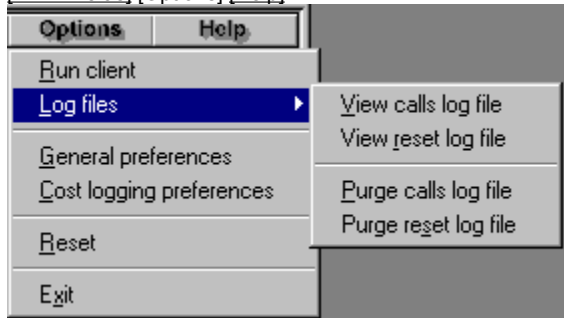


Help menu

This shows the help file.

Main Interface Menus

[Minimize as] [Options] [Help]



Run client: This runs the Dial-Up client selected in Modem Logger setup.

Log File

View log file: Displays the calls log file

View reset log file: Displays the reset log file

Purge log file: Deletes all the data in the log file

Purge reset log file: Deletes all the data in the reset log file

General preferences: This brings up the Modem Logger setup window.

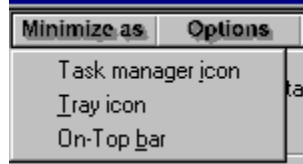
Cost logging preferences: This brings up the cost logging configuration window.

Reset: Calls up the reset dialog which allows you to reset total time and total cost.

Exit: This quits modem logger.

Main Interface Menus

[Minimize as] [Options] [Help]



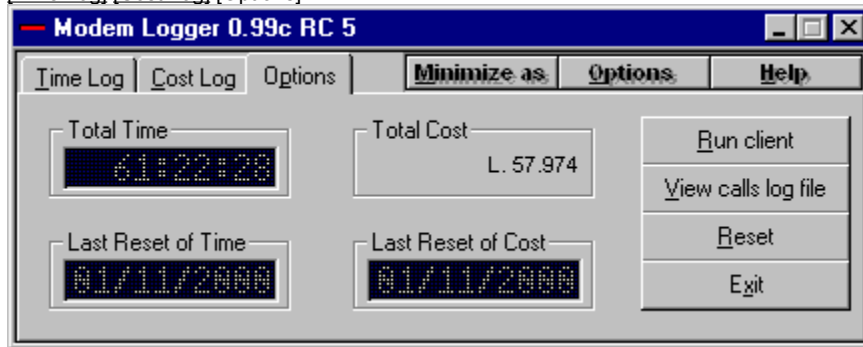
Task manager icon: This minimizes the windows as a normal icon on the taskbar.

Tray icon: This minimizes the windows as an icon in the tray area of the taskbar.

On-Top Bar: This minimizes the windows as an always-visible bar at the top of the screen.

Main Interface

[Time Log] [Cost Log] [Options]



Last Reset of time

Displays the date of the last reset of total time

Last Reset of cost

Displays the date of the last reset of total cost

Reset

Calls up the reset dialog which allows you to reset total time and total cost

Run Client

Runs the Dial-Up client selected in modem logger setup.

View Log file

Displays the Log File

Exit

Close Modem Logger

Main Interface

[Time Log] [Cost Log] [Options]

Modem Logger 0.99c RC 5

Time Log Cost Log Options Minimize as Options Help

Payment Type
All - From: 09.00 to: 19.00 - Off Line

Next Charge In:
OFF LINE

Last Call Cost
L. 634

Today's Calls Cost
L. 2.384

Total Cost
L. 57.974

Payment type

This shows the current time band of your charging method.

Next Charge in

This displays the time left before applying the next charge

Calls frames:

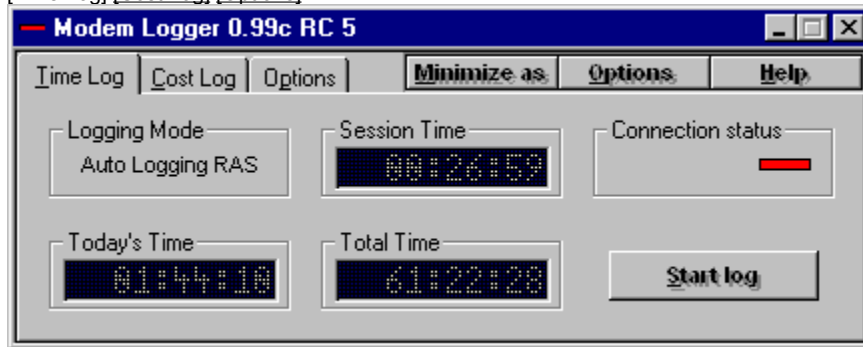
Last call cost: This displays the cost of the last call

Today's calls cost: This displays the cost of all calls for the current day

Total cost: This displays the cost of all calls since the last reset

Main Interface

[Time Log] [Cost Log] [Options]



Logging Mode

Displays if automatic detection and logging is selected

Modem Status

The LED is RED for disconnected, GREEN for connected

Time frames:

Session Time: displays the last call time

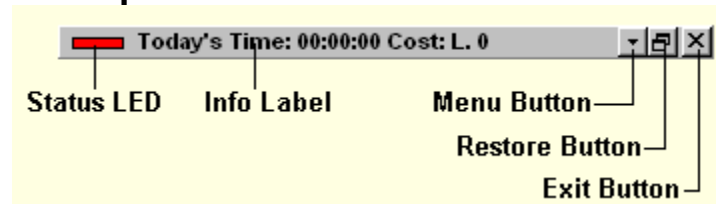
Today's Time: displays today's total time

Total Time: displays total accumulated time

Start Log

If manual logging is selected allows to manually starts the logging.

On-Top Bar



Status LED

The LED is RED for disconnected, GREEN for connected

Info Label

If on-line indicates the current call's time and cost. If off-line indicates the today's calls' time and cost

Menu Button

Displays the On-Top Bar Menu

Restore Button

Restores the Standard Interface

Exit Button

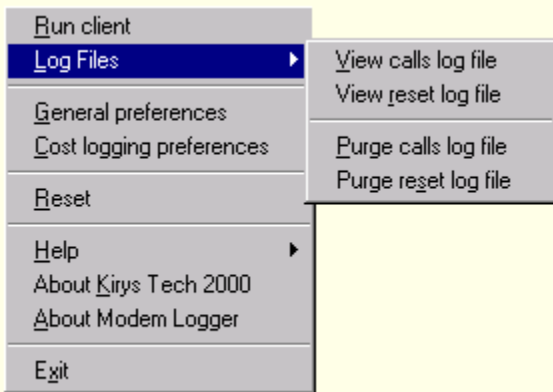
Closes Modem Logger

How To move the On-Top Bar

To move the On-Top bar put the mouse on it (not on the buttons) it will change the cursor, now push the left button and move the mouse without release the button.

NOTE: NC: indicates the next charging time.

On-Top Bar Menu



Init Modem: Initializes the modem on the selected port. This option is disabled if the selected detect mode is RAS.

Run client: Runs the Dial-Up Client selected in Modem Logger Configuration

Log File

View log file: Displays the calls' log file

View reset log file: Displays the reset log file

Purge log file: Deletes all the data in the log file

Purge reset log file: Deletes all the data in the reset log file

General preferences: Brings up the Modem Logger Configuration window.

Cost logging preferences: Brings up the cost logging configuration.

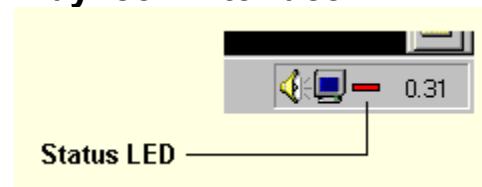
Reset: Calls up the reset dialog which allows you to reset total time and total cost

Help: Shows the help file.

About: Shows the About box.

Exit: Closes Modem Logger

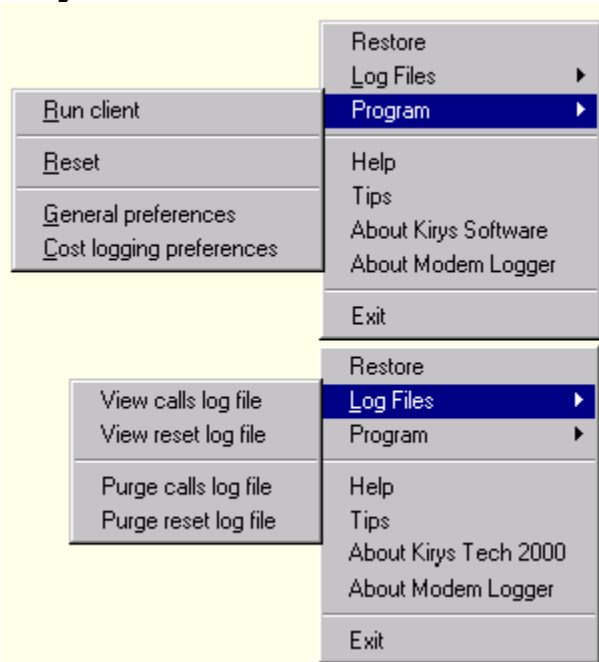
Tray Icon Interface



Status LED

The LED is RED for disconnected, GREEN for connected
Double clicking on this icon brings up the Main Interface
Right clicking on this icon brings up the Tray Icon Menu

Tray Icon Menu



Restore: Restores the standard interface

Help: Shows the help file.

About: Shows about box.

Exit: Closes Modem Logger.

Log File

View log file: Displays the calls log file

View reset log file: Displays the reset log file

Purge log file: Deletes all the data in the log file

Purge reset log file: Deletes all the data in the reset log file

Program

Run client: Runs the Dial-Up client selected in modem logger setup.

Reset: Calls up the reset dialog which allows you to reset total time and total cost

General preferences: Brings up the modem logger setup window.

Cost logging preferences: Brings up the cost logging configuration.

Release History

Planned Features Known bugs

- V0.99f** This is the Release candidate 8.
Fixed bug into const logging save method.
TCbase v0.65
Minor bugs fixed.
- V0.99e** This is the Release candidate 7.
Date is now formatted using your system short date format.
Last Call datas are now saved.
Removed obsolete infos from the help file.
Many Optimizzations.
Minor bugs fixed.
- V0.99d** This is the Release candidate 6.
Minor graphic bug fixed in Log Viewer.
Show Next Charge Time CheckBox.
Now ML saves the cost data after each call.
Now ML saves last call cost.
Next charging cost does not show the hour column if time is less than an hour (I suppose that most unit length is less than an hour).
Time format does not add a zero to the hour column if time is less than 10 hours.
Minor code optimizations.
Minor bugs fixed.
- V0.99c** This is the Release candidate 5.
Fixed a but that makes v0.99b give a type mismatch error on some computers.
Minor code optimizations.
Minor bugs fixed.
- V0.99b** This is the Release candidate 4.
Migration to Kirys Tech 2000 mark.
Buttons of the main interface are no more bitmap (this saves some memory and reduce modemlog.exe size).
Minor optimizations (removed most debug functions).
KProc.dll and KRas.dll joined into a single dll (kprocs.dll), this will save memory.
Many optimizations into kcc.ocx.
Fixed a bug in kcc.ocx.
Removed VB5 Runtimes from full installation package. (you can find them on my homepage).
Minor bugs fixed.
- V0.99a** This is the Release candidate 3.
Old detect mode and its related options removed.
Reset Function added to all menus.
TCBase 0.61.
Minor bugs fixed.
- V0.99** This is the Release candidate 2.
Modem Logger Tips Dialog added.
Log viewer has a nicer interface.
Ras Detect Mode is default now.
A lot of optimizations (mainly in kcc.ocx).
Minor bugs fixed.
- V0.98** This is the Release candidate 1.
New Installer (inno Setup).
Now default Detect Mode is RAS Detect Mode.
Fixed Detect Mode Configuration BUG.
Added Make Compatible with Windows customization software option.
Now the Init Modem function is enabled only if old detect mode is selected.
Configurable Led Colors.
Minor GUI improvements.
TCBase v0.60.
Minor bugs fixed.
- V0.95** Splash screen non more displayed if Modem Logger is started at windows startup.
Allow manual logging option added.
Became On-Top Bar when On-line option added.
Configuration cancel button.
Some code optimizations.

- Added close confirm dialog.
TCBase v0.51.
Some minor optimizations.
Minor bugs fixed.
- V0.93** Always Minimize on select interface option.
The On-Top Bar is now moveable.
Now is possible to launch the configuration panel during logging.
A lot of optimizations.
Better RAS support.
TCBase v0.50.
Minors bugs fixed.
- V0.92** About Kirys Software Dialog.
Fixed a tremendous bug that causes wrong times display.
TCBase v0.45.
Minors bugs fixed.
- V0.91** Now there is a reset dialog!
Is possible to choose between reset to 0 and reset to today value.
Now is possible to print the log file form inside the log viewer.
TCBase v0.45.
Minors bugs fixed.
- V0.90** New cost logging more configurable! It can support more charging systems.
Now the LEDs are more readable.
Timed sound x second before next charge is applied.
Reset log.
Cost Logging configuration is now on every menu.
Now date and time are on different columns in the tabbed mode log file.
Some optimization: now Modem Logger displays are updated more often but with the same CPU usage!
TCBase v0.40.
Minors bugs fixed.
- V0.86** Next charge time is available also on Tray Icon and On-Top Bar
Minor code optimization
Minor bugs fixed
- V0.85** Save form position for Modem Logger main form
Internal text viewer for log files with large-size file support
Handshake time can be set up to 60 secs
Modem status detection through RAS
Currency format selection
Full Windows NT compatibility
Minor code optimization
Minor bugs fixed
- V0.81** Minor bugs fixed
- V0.80** Autoconfig function that allows you to configure the cost settings with one click!
Tabbed mode log file. This mode is less detailed but allows it to be easily imported into Excel
Better led font.
Autodetect modem Com port
Com port testing
Timed sound playing every n minutes or, if you prefer, ten seconds before applying the next charge
Next charge time
The Trayme.ocx file is no longer needed due to its implementation in the Kcc.ocx component
Code optimization, now Modem Logger uses 25% less CPU when displayed as a standard window and 80% less CPU when displayed as a tray icon!
Minor graphics improvements
Minor bugs Fixed
- V0.66** Updated the link to kiryssoft home page
Minor bugs Fixed
- V0.65** Ini file reading and writing system rewritten
The total time and the date reset are now totally independent
The date of last reset of time and cost are now displayed separately
The total time and the total cost are now reset separately

Handshaking time function added
Minor bugs fixed

V0.61 Installation Bug Fixed
 New interface
 Minor bugs fixed

V0.60 The tray icon and the On-Top Bar interfaces now display
 the cost of the current call as well as its time
 When the modem is off-line, the On-Top Bar interface
 now displays current day's total calls' time and cost
 Configuration saving system totally rewritten
 Current payment charge identification algorithm totally rewritten
 Tray icon support replaced with a new component of my own
 Some graphical improvements
 New splash screen
 Minor bugs fixed

V0.55 Cost logging support
 Minor graphics improvements
 Minor bugs fixed

V0.46c Help file modification
 Minor bugs fixed

V0.46b Installation bug fixed

V0.46a Minor bugs fixed

V0.46 Minor bugs fixed

V0.45 After midnight time logging bug fixed
 Run at Windows startup bug fixed
 Inserted a menu on the On-Top Bar Interface
 Minor bugs fixed

V0.40 Time longer than 24h bug fixed
 Always On-Top bar support
 Total time reset function
 Last reset date
 Initialize modem function
 Calls logging to a text file
 Minor bugs fixed

V0.20 Tray icon support
 Better setup interface
 Minor bugs fixed

V0.10 First official release

About the author

I am an amateur programmer. I distribute my programs as freeware because I like programming and I want to share my creations with everyone.

I hope that you like my product!

For suggestions and bug reports e-mail to:
support@kt2k.com

Kirys Tech 2000 WWW Site

<http://www.kt2k.com>

(you can download last version of The Modem Logger from here!)

Thanks to

Richard Grier

For information about the modem's hardware calls (used in the Old detect mode)

Terry Marshall

For linguistic advice and beta testing

And all the people who helped me with their reports and suggestions

Know Bugs

Modem Logger can't log a single call which is longer than 24h in length due to system timer limitations.

F.A.Q.

The Frequently Asked Questions are available at Kirys Tech 2000 Web Site:
<http://www.kt2k.com>

Status Led

Is an icon that shows the status of the modem

RED = Off line

GREEN = On Line

Log File

The log file is where the program records, when you make a call, the start time, the end time, the length of a call and other data.

Reset Log File

I where the program records, when you reset the the log time or cost, the data of the reset and the type of reset (time or cost)

Planned features

Release history

This page contains the list of the features I planned for next versions of Modem Logger.

All this features will be available, but only some of this features will be availables in next version.

This is the release candidate so no new options will be added till v1.0.

All the planned options will be added to the next major release (maybe Modem Logger 2.0 or Modem Logger 2000 or... I haven't yet decided, If you want you can suggest a name)

Here some of the option that will be available (gradually) in the next major releases

Automatically reset in certain dates.

More flexible charging method system.

Password protection (avoid children/friends from closing/configuring Modem Logger).

Enhanced security: Will be difficult to alter Modem Logger Data without the password...

Skinnable Interface.

Multi user support.

Less resource usage.

and more...

Dial-up client

Is the program you use to connect to your internet service provider, you can select it in the modem logger setup.

Handshake time

When you connect to your Service Provider there is an initial period of time when your modem "talks" to the Service Provider's computer. This is usually heard as a fuzzy noise and is called "handshaking". Neither Modem Logger nor your Dial-Up Networking count this time but your telephone company does. The Configuration Panel has a box called Handshake time where you can enter your average handshaking time, which will be included in the total logged time.

Session time

Is the time of the last call you made with your modem. This value is reset when you make another call and when you close the application.

No Dial-Up program defined!

This means that you did not defined a dial-up program the the configuration panel.

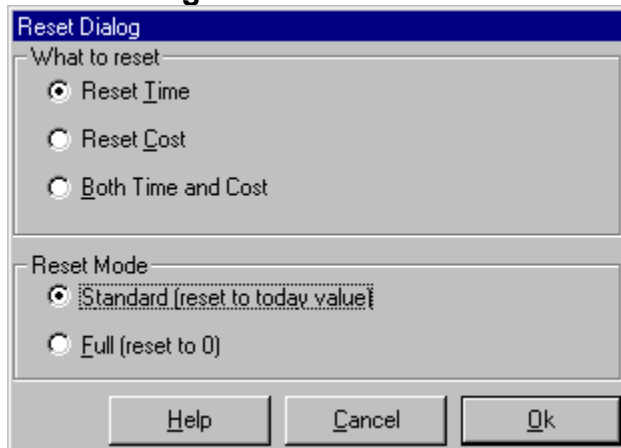
If you are a Windows NT User if you write rasphone into this text box will allow Modem Logger to launch NT DUN Dialer.

Generic runtime error

Please send me the description of this error showed by that dialog with a description of what you was doing when the error occurred.

You can send me the error through the feedback form in the support section of my Website at:
<http://www.kt2k.com>

Reset Dialog



This Dialog allows to reset Total Time and/or Cost

What to reset:

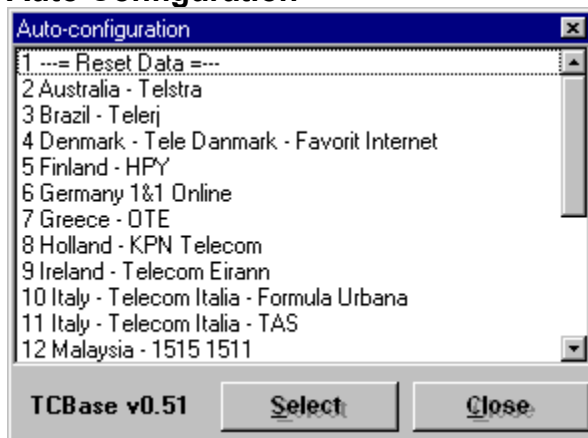
allow to chose what do you want to reset (time and/or Cost)

Reset mode:

Standard: This set the total time and/or cost to the today's value

Full: This set Total Time and/or cost to 0

Auto Configuration



This Dialog allows to configure the cost logging automatically for many countries

Just select one of the company and click the select button.

Click the close button to leave the configuration unchanged.

If you want to reset the cost logging configuration select Reset Data (entry no. 1) and click the select button.

