

Additional possibilities

Here you can find some additional possibilities that were not described in other part

1. After the double click on the user in list of users only this user will be checked and first page of chat will be selected.
2. After the double click on the user in list of users only this user will be checked if he was unchecked. If user was checked it will be unchecked and all other users will be checked.
3. ESC key hides chat.
4. If chat is shown and you pressed hot key for calling chat it will be hidden.
5. All sent messages are stored. You can use UP and Down keys for selecting previously sent message if you use single line editor. You can use CTRL+Up/Down for such purpose if you use multi line editor for messages.
6. You can use these command (it will work only in single line editor):

/? or **/help** or **/cmdlist** - show list of commands.

/clear - clear current chat.

/clear_history - clear history of sent messages

/msg "name of user" message - send private message to user.

/refresh or **/who** - refresh list of users.

/nick "new name" - change you nickname.

/nextnick "new name" - set your Nickname for next chat session.

/me message - send special message. It will be shown in chat like (without brackets):

<Your nickname> <message>.

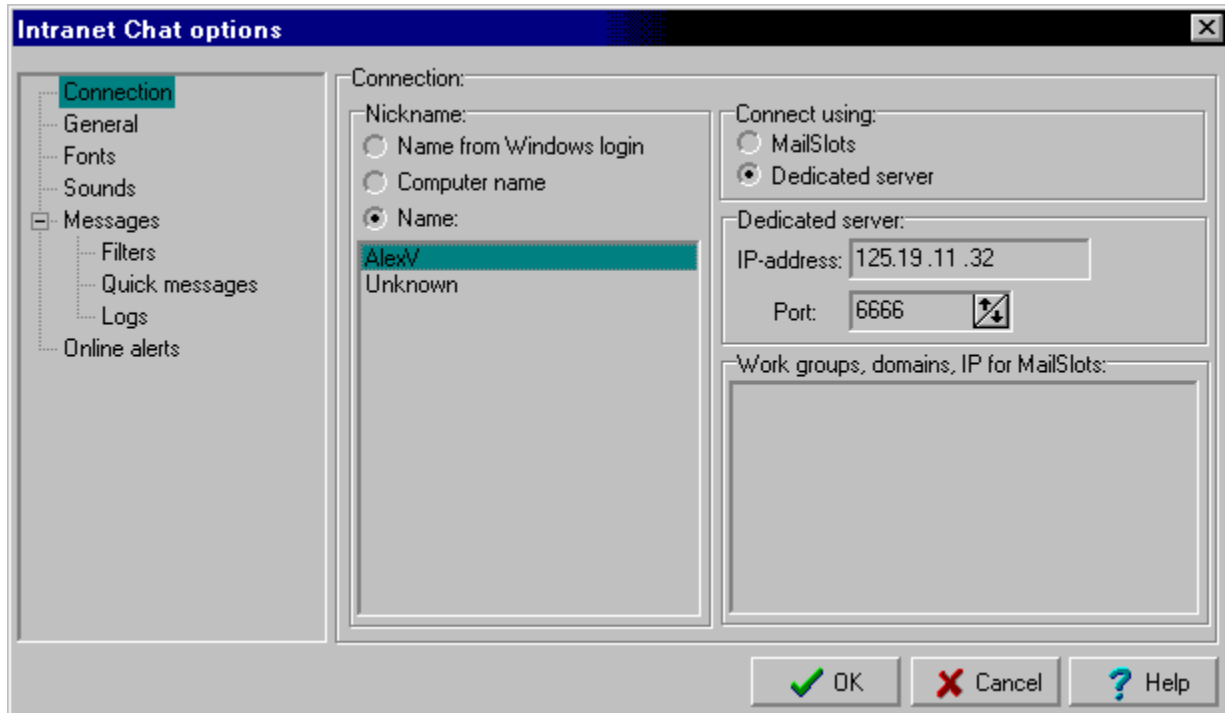
You can send message like /me is very hungry :).

/smiles - show list of combinations that will be converted to the pictures.

7. If message board page is active when you will send message this message will be shown on the message board.
8. Typed but not sent message also is stored.
9. After the pressing right mouse button on necessary state in the toolbar editor of list of messages for selected mode will be shown.
 - 1 You can open options dialog by pressing right mouse buttons
0. on **Options** button of toolbar.
 - 1 If you will press on the user name in the messages window the
1. same popup menu like for this user in the user list will be

shown

Connection



Nick:

Nick:

Your name in the chat.

Name from Windows login:

Use like Nick in chat name that was used for Windows login.

Computer name:

Use like Nick in chat name on your computer.

Connect using:

Chat supports two types of connection: MailSlots and dedicated server.

MailSlots:

If this type is selected chat will use one of the installed protocols that is connected to the Microsoft Network.

Dedicated server:

If this type is selected chat will use TCP/IP protocol and will connect to the computer where special chat server is running.

Dedicated server:

IP-address:

Address of the computer where chat server is running.

Port:

Port on the chat server where chat is running.

Domains and workgroups:

The list of domains and workgroups which exist in your network. You will see in chat only users from these domains and workgroups. Use semicolon to separate names. If this parameter empty you will see users only from your domain or workgroup.

Sometimes chat doesn't see anybody from one of the work groups or domains when this work

group or domain is in another subnet. The only way to make it work is to add all computer names or their IP addresses from such work group or domain into the list of work groups and domains. On the computers from that work group or domain they will have to add all from your and on the computers from your work group or domain will have to add from their.

CONTENTS

Functions and abilities

Options

Connection

General options

Fonts and colors

Sounds

Messages

Filters on private messages

Quick messages

Logs (history) of messages

On-line alerts

Work with chat

States (modes) of chat

Sending messages

Private messages

Private chats

Lines

Join to the private chat or line

Popup menu

Title, icon, floating window

Messages window

Message board

Users list

ToolBar.

Additional possibilities

Hotkeys

Known problems

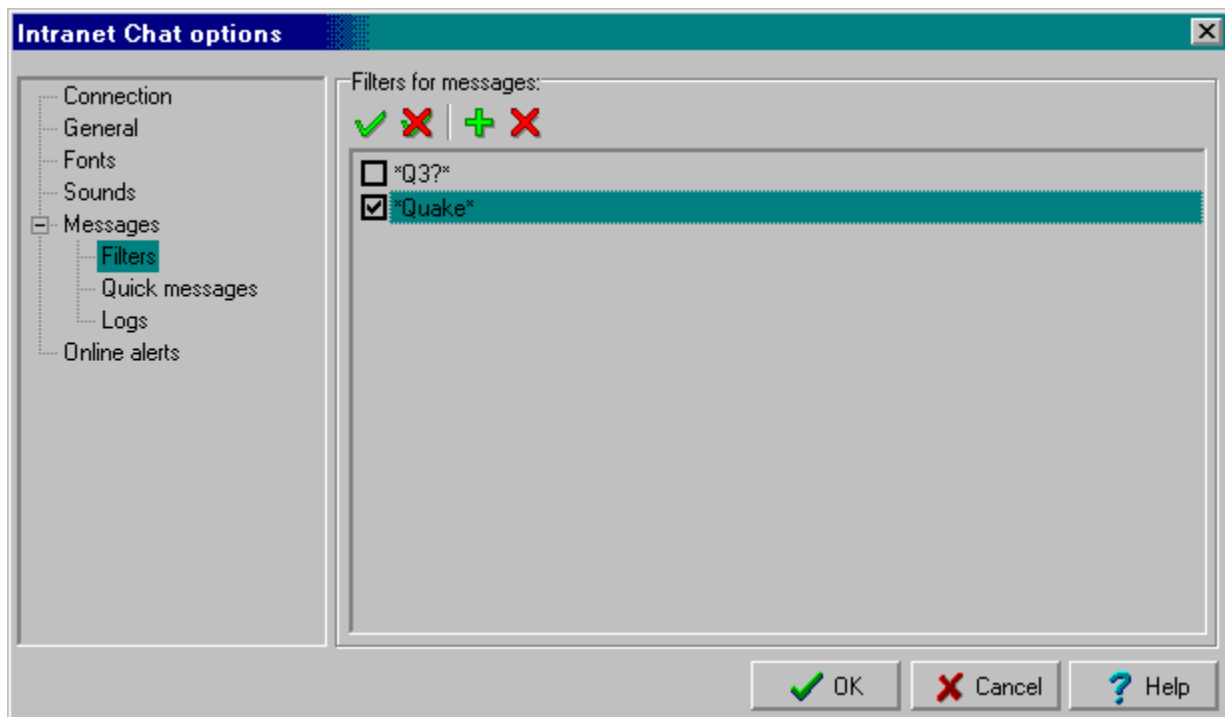
Filters on private messages

Chat support filtration of private messages. If you don't want receive message with some words or with some combinations of words you can set special filters for private messages. If after this such message will be received it will be shown in message window you will be not informed about receiving it.

You can turn on/off filtration from menu **Parameters/Filter private messages** from the popup menu or toolbar.

Setting filters.

You set so much filters as you want. Only checking each private message will take some time.



Filter contains list of words that are not accepted in private messages.

You can turn on and off one of filters. I. e. you can have many filters but use only some of them or all.

Filter can contain macroses:

- ? - any symbol
- * - any group of symbols including empty group

If you want to use one of this symbol in the filter you should type it twice. You can use macro symbols many times and in different sequences.

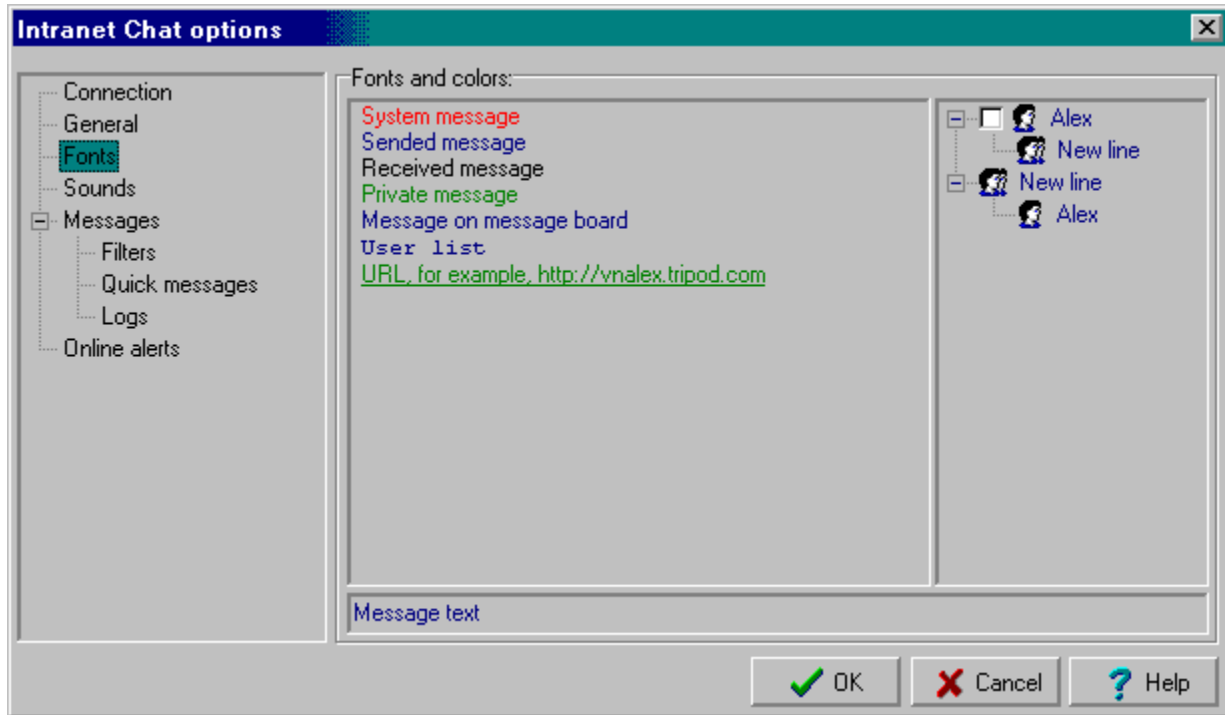
Some examples:

"*SC*" -All messages that contains word "SC"

"Quake?" - All message that contain word "Quake" - Quake1, Quake2, QuakeB ...)

You can use F2 button to edit message.

Fonts and colors



You can select background color for each part of the main windows: messages window, list of users, message editor. Click on necessary window but not on the text in it. After this dialog for selecting color will be shown.

You also can select font for each of these windows. For this purpose click on the text in these windows.

You also can select font that will be used for displaying different kinds of chat messages. For this purpose click on the necessary message kind.

System message:

Font that will be used for displaying system messages.

Sended message:

Font that will be used for displaying your messages.

Received message:

Font that will be used for displaying received messages.

Edited message:

Font that will be used in message editor.

Private message:

Font that will be used for displaying private messages.

Message board message:

Font that will be used for displaying messages on message board.

List of users:

Font that will be used for displaying list of users when "Users" item in the main menu it selected.

URL:

Font that will be used for displaying URLs.

Press right mouse button to select color of the font that will be used for displaying URLs when mouse is on it.

Functions and abilities

Intranet Chat is a tool for the messaging between computers in the local network in MS Windows 95/98/NT.

It proposes following functions and abilities:

1. Common chat. This chat is available for all users.
2. Private messages. Ability to send private message for user, for group of user or for all users.
3. Private chat. Ability to create chat with other user. This chat will be visible only for these two users.
4. Line. Ability to create line (channel) for discussing or chatting. It's possible to set name for line and password for join to it. It's not possible to join to the line if you don't know password.
5. Message board. Each user can put message on this board.
6. Filter for received messages.
7. Two ignore mode. One is for ignoring only private messages. Another is for ignoring all messages from the ignored user.
8. Quick messages. Ability to set shortcuts for words or phrases for quick adding them in the message editor.
9. Online alerts. Ability to set alert on connecting into the chat user with given name or from given computer. When this event will take place one of actions can be performed:
 - a) Chat will be shown and will report about this.
 - b) The specified message will be sent to the connected user.
 - c) The specified message will be sent to you.
10. Log. Ability to automatically store the messages from common chat and private messages in files.
1. Chat support 4 modes:
 1. Normal state. All messages are received. In this state when private message or message in private chat is received chat will appear in the top of all applications and show this message.
 2. Don't disturb on private messages that were sent for some users not only for you. So called mass messages.
 3. Full don't disturb.
 4. I'm away.For all these modes you can set answer message that will be sent to the sender of the private message. For normal mode this is a message that will be sent to other users when you will enter in the chat. This is so-called connect message. Also the icon in the systray will be changed in the according with the state of chat.
1. Toolbar for accessing to the main functions.
2.
 1. Minimize in the systray and hide in taskbar.
3.
 1. Possibility to set nickname and change it during the session.
4.
 1. The status of chat can be shown in the separated window like in ICQ.
5. ICQ.
 1. Automatic "I'm away mode" if any key on keyboard was not pressed or mouse cursor was not moved during set time.
- 6.

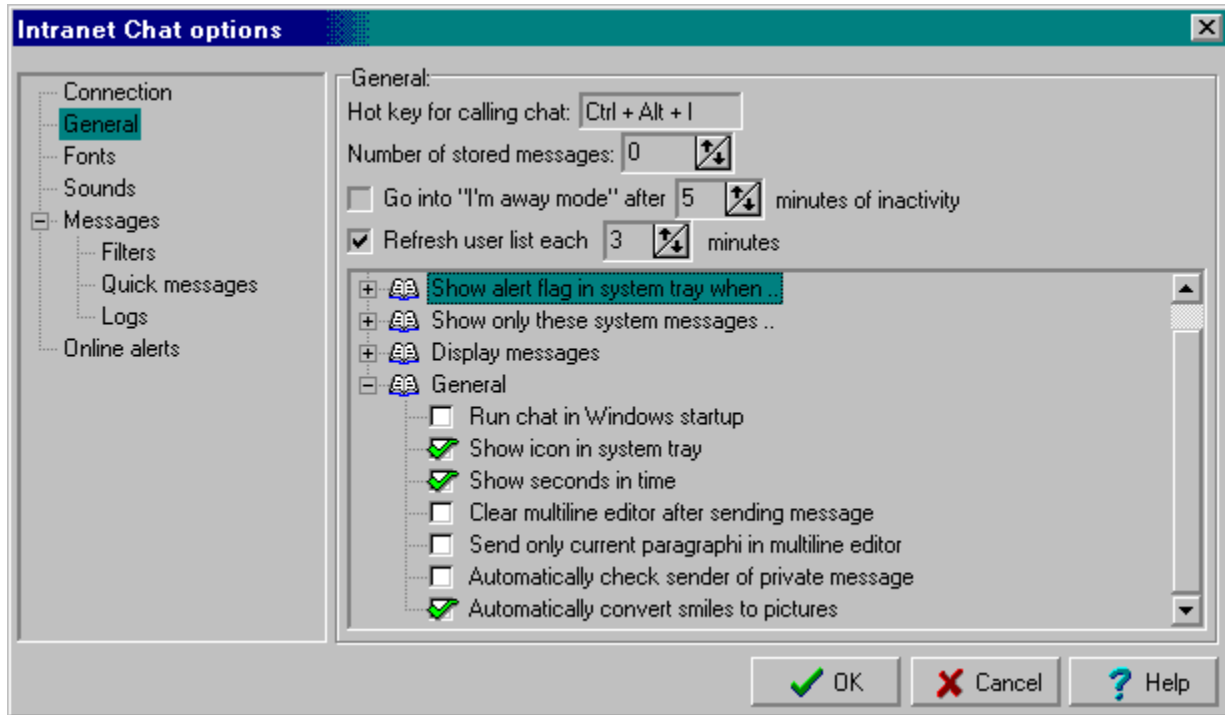
- 1 Automatic conversion smile symbols combinations to the
 7. pictures
- ..

This is not full list of abilities of the program.

You can always find new versions on
http://vnalex.tripod.com/e_index.htm

Send your messages with errors, proposes to:
vnalex@yahoo.com

General options



Hotkey for calling chat:

Hotkey for calling already running chat. After the pressing this combination of keys main window of chat will be shown.

Number of stored lines of messages:

This is the number of messages that will be stored and shown. If number of received messages more then this number older messages will be deleted automatically. If this value is 0 all messages will be stored and shown in the window.

Automatically set "I'm away" after ...

If during this time nothing was done (key keyboard was not pressed and mouse was not moved) "I'm away" mode will be automatically set. When mouse will be moved or key on keyboard will be pressed previous mode will be restored.

Bring chat to front when ...

Alert received
Line created
Message board updated
Message in common chat arrived
Message in line arrived
Message in private chat arrived
User connected
User disconnected
User renamed

It will work if "Don't disturb on all messages" is not selected. In this case chat will be not shown and signal flag will be shown in system tray area (see below). In addition to this main window will be shown when:

- private chat is created (if full don't disturb mode is not selected)

- message in private chat arrived (if full don't disturb mode is not selected)
- private message arrived (if full don't disturb mode is not selected)
- private message that was sent to some users arrived (if don't disturb on such messages is not selected)

Show alert flag in systray when...

Alert received
 Line created
 Message board updated
 Message in common chat arrived
 Message in line arrived
 Message in private chat arrived
 User connected
 User disconnected
 User renamed

Flag will be shown when previous parameter was not selected.

Show only these system messages:

Private chat created
 Line created
 Message board updated
 User connected
 User disconnected
 User renamed

If one of messages is not selected it will be not shown in main chat.

Message display format:

<Time> <Sender>: Message

Received messages will be shown like:

<Time of receiving> <Sender of message>: <Message>

<Sender> <Time>: Message

Received messages will be shown like:

<Sender of message><Time of receiving>: <Message>

<Sender>: Message

Received messages will be shown like:

<Sender of message>: <Message>

General:

Run chat in system startup (after login Windows):

Chat will be started automatically right after your login in Windows.

Show icon in systray:

If this parameter is set icon of chat will be show in systray. In other case it will be now shown and you can call running chat only by pressing hotkey or by starting chat again

Display seconds in time:

If this parameter is selected seconds will be shown in time of receiving messages. In other case only hours and minutes will be displayed.

Clear multiline editor after message sent:

If this parameter is selected multiline editor will be automatically cleared after sending message. Message will be automatically stored. Use Ctrl+Up/Down to see stored messages.

Send only current paragraph (in multiline editor):

If this parameter is selected only current paragraph in multiline editor will be sent. In othe case all text that is in multiline editor will be sent.












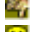

Autoselect sender of private message:

If this parameter is selected the sender of last private message will be always checked in list of currently connected users.

Automatically convert smile to pictures:

Combinations or smiles symbols will be automatically converted to the smiles.

List of available combinations:

:) or =)	
:-) or =-)	
;))	
:(or =(
:p	
:D	
:î	
:E	
:B	
:'(or :,(
8)	
x(
:/	

Hotkeys

These keys will work everywhere.

F4	Change type of editor (single line/multi line)
F5, Alt+R	Refresh list of users
F9, Ctrl+P	Call options dialog of chat
F3	Change state of chat in to the next state
Shift+F3	Change state of chat in to the next state
Ctrl+Fx:	x - from 2 to 12. Switching between pages of chat
Ctrl+Tab	Next page of chat
Ctrl+Shift+Tab	Previous page of chat
Ctrl+Up	Scroll list of message up on one line if single line editor is selected
Ctrl+Down	Scroll list of message down on one line if single line editor is selected
Ctrl+PgUp	Scroll list of message up on one page if single line editor is selected
Ctrl+PgDn	Scroll list of message down on one page if single line editor is selected
Alt + Home	Move to the begin of list of users
Alt + End	Move to the end of list of users
Alt + PgUp	Move up on one page in the list of users
Alt + PgDn	Move down on one page in the list of users
Alt+Up	Move up on one user in the list of users
Alt+Down	Move down on one user in the list of users
Alt + L	Create line
Alt + T	Close current private chat or line
Alt + M	Send private message to the selected user
Alt + P	Create private chat with selected user
Alt + J	Join to the selected line of private chat

These keys will work only in common chat.

Alt + +	Expand selected line or private chat if line of private chat is selected. In other case all users will be checked
Alt + -	Collapse selected line or private chat if line or private chat is selected. In other case all users will be unchecked
Alt + Space	Change state of current user (check/uncheck)
Alt + *	Invert state (check/uncheck) list of users

Other keys

Up, Down	Move through history of sended messages if single line editor is selected
Ctrl+Up, Ctrl+Down	Move through history of sended messages if multi line editor is selected

Join to line or private chat

For join to the line or private chat select it in the list and press right button of mouse. In menu select **Join to line** or **Join to private chat**. If line was created with password program will ask password for entering. If you will type right password or it absent you will be joined to the selected line or private chat.

Known problems

1. Chat doesn't load or load very long time.

This can happen for the some settings of the network. You must set name of the work group or domain. In this case all must work.

2. The icons in the taskbar, on the tabsheets and on the buttons of toolbar are absent.

The reason of this is old version of ComCtl32.dll, that doesn't support some possibilities that chat uses. The Windows 95 contains this old version but if you installed IE 4+ all should be OK.

You can fix this problem using update from Misrosoft. You can dowload it fom home page. I don't remember the URL on Microsoft web site.

You also can do this from the chat home page Âçÿöü îæíî ñîðàíèöü ÷àà:
http://vnalex.tripod.com/e_index.htm

Lines

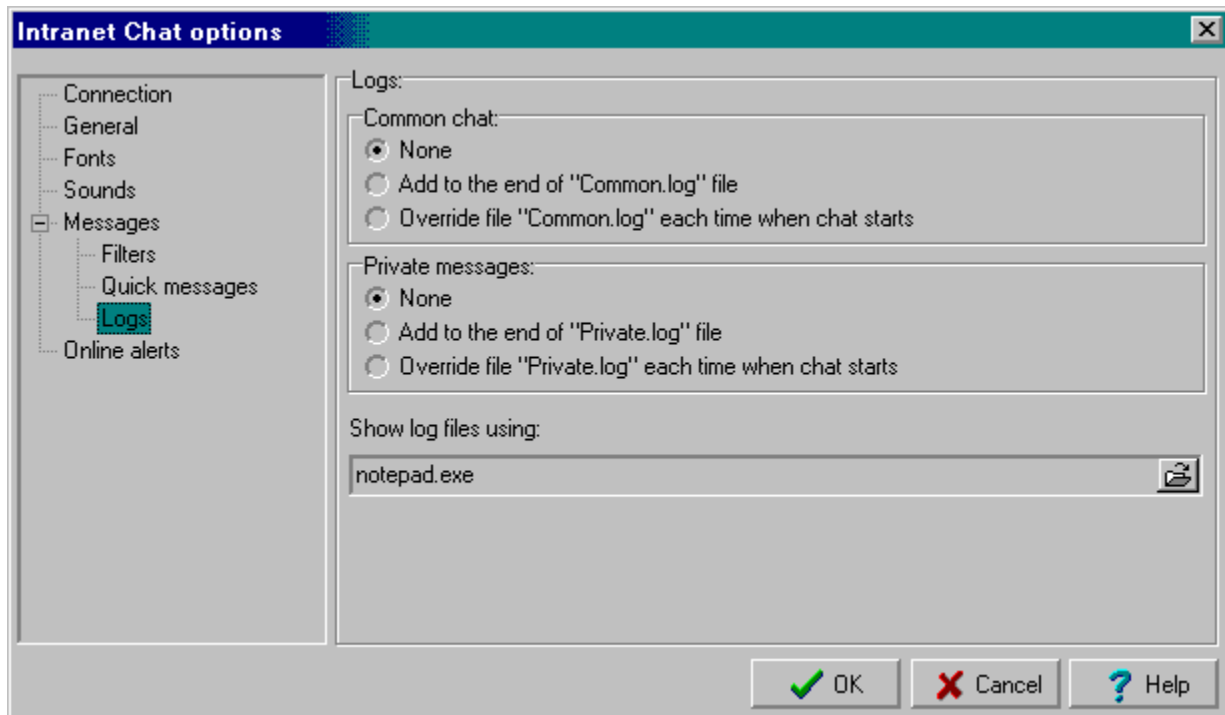
Line is similar to common chat. It has only two differences. You can set name of it and password for join to it.

Creating:

1. Open popup menu on list of users and select item **Create line**.
2. In window that will appear type name of line and password if you want to protect this line from other users by password.
3. If line with such name is not exist it will be created and you will join to it.

If all users will close line line will be also closed.

Logs (history) of messages



You can automatically store private messages and messages of common chat in the files. Files Common.log and Private.log that will contain this information will in program folder.

Common chat:

None:

Messages will be not stored.

Append to file "Common.log":

All messages will be added to the end of file Common.log.

Override file "Common.log" file:

File Common.log will be cleared each time when you will start chat.

Private messages:

None:

Messages will be not stored.

Append to file "Private.log":

All messages will be added to the end of file Private.log.

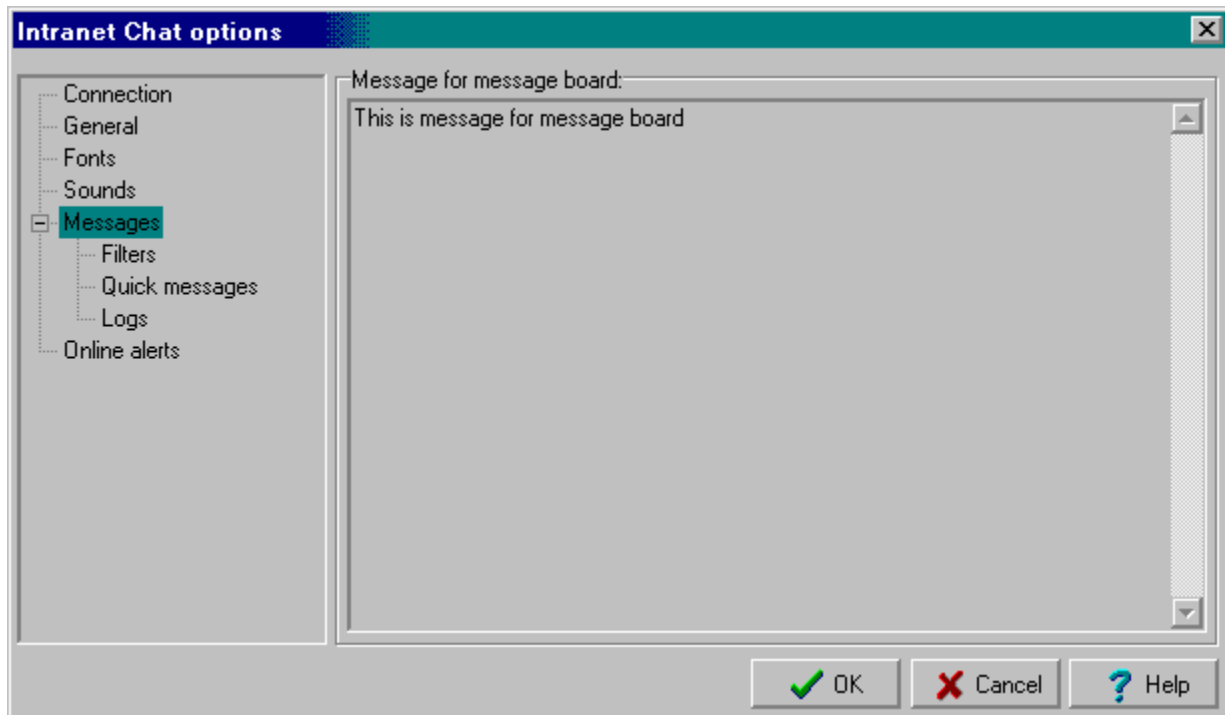
Override file "Private.log" file:

File Private.log will be cleared each time when you will start chat.

Viewer for log files:

Program that will be used for viewing files.

Messages



This message will be published on the message board.

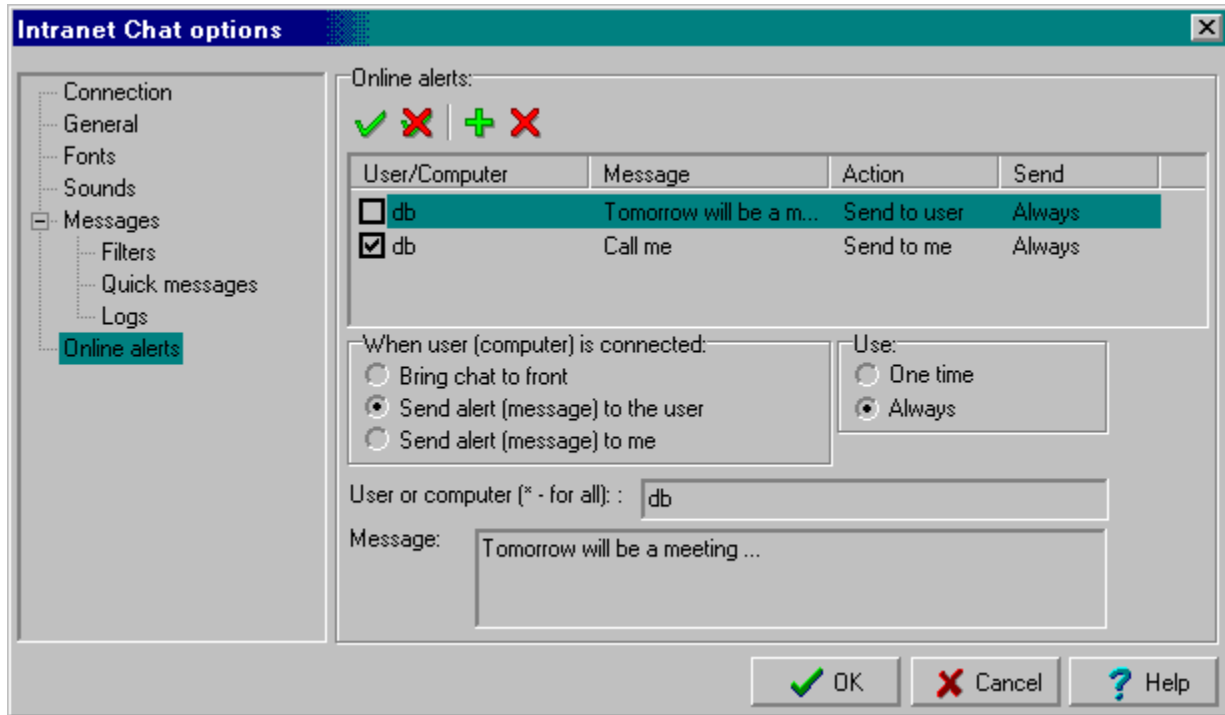
Thee --- will be automatically converted to the line. This is very usefull when it't necessary to separate different parts of the message.

If you don't want to publish any messages on the message board simply clear this message.

You also can change this message from the "Board" page on the chat main window. It's much easy. Simply type message and send it from that page. It will be published on the message board.

But if you will do this from this page your old message will be replaced be this new message. You can you old message and add new on that text and then send this message on the message board.

On-line alerts



On-line alerts are actions that will be done when user is connected to the chat.

Alerts are shown in main chat when user connected.

You can turn on/off them.

When user (computer) connected:

What will be done.

Bring chat to front:

Main chat window will be shown and message:

Alert. User <Name> if connected.

or

Alert. User <user name> from computer <computer name> is connected.

Send alert to user:

Message will be sent to the connected user.

Send alert to me:

Message will be sent to you.

Use alert:

You can set how many time alert will be used.

Once:

One time. After this active flag will be turned off

Always:

Alert will be used all time.

User or computer:

Nickname of user in the chat or name of the computer. You can use * for all users and computers.

Message:

Message that will be sent.

Popup menu for message board

Select all:

Select all messages on message board.

Copy:

Copy selected text into the clipboard.

Copy own message:

Copy your own message for message board into the clipboard. If you want to publish new message on the message board but you don't want to loose previous message, you can copy old message into the clipboard, select multiline editor (key F4), paste copied message, edit it and send right from this page. Message will be published on the message board.

Delete own message:

Delete your message from the message board. This command is the same like sending empty message from the message board.

Refresh:

Refresh contents of the message board.

Popup menu for messages window

Select all:

Select all messages in the window.

Cut:

Cut selected text into the clipboard. Whole message will be deleted. Not only selected part of it.

Copy:

Copy selected text into the clipboard.

Delete:

Delete selected text. Whole message will be deleted. Not only selected part of it..

Clear:

Delete all messages.

Close:

Close private chat or line. This item will be shown only if it will be private chat and line.

This items will be shown only if selected page is common chat (first tabsheet).

View log file:

Show log file of common chat.

Clear log file:

Clear log file of common chat.

View log file of private messages:

Show log file of private messages.

Clear log file of private messages:

Clear log file of private messages.

Popup menu for title, icon, floating window

This popup menu will be shown when right mouse button is pressed on the chat title, icon in SysTray, floating windows that shows chat state.

Options:

Parameters:

Will show chat options.

Use single line editor:

Set type of message editor (single line/multi line). If selected single line editor will be used. Key F4 also switches editor type.

Show private messages in popup window:

If this option is selected and chat mode allows to show private messages, each received private message additionally will be shown in popup window.

Filter private messages:

This is the global switch for filtering. If this option is selected then chat will use all enabled filter to filtrate received message.

State:

Normal:

All messages will be received.

Don't disturb on mass private messages:

Chat will not disturb you on private messages that were sent not only for you but also somebody else. By other words if more then two users including you were selected when private message was sent then this message will be a mass message.

Don't disturb on all messages:

Chat will not disturb you on all messages.

I'm away:

When you will be absent for some time you can set this mode and message for this mode.

Show state of chat in floating window (like in ICQ):

State of the chat will be additionally shown in window window (like in ICQ). You can move this window in most suitable place. It's very suitable when windows taskbar is automatically hided. This window has the same popup menu.

View:

List of users:

Show/hide list of users.

Toolbar:

Show/hide toolbar.

Message board:

Show/hide message board.

Users:

Using items from this item you can get information about all users that are connected: nick name, computer name, windows login name, chat version. This information (list of all users) will be shown in main chat. In subitems you can select how this list will be sorted: by nickname, by computer name, by windows login name, by chat version.

About:

Show information about developer: name, chat home page, contact email. Feel free to write me.

Help:

Show this help.

Exit:

Exit from the program.

Popup menu for users list

Items that will be shown if user is selected.

Insert "user_name:" in message:

If this item is selected "user_name:" will be added into the cursor position in the text editor.

Private message to "user_name":

This item will be shown only if when single line editor is selected.

Send private message to the selected user. In the message editor you will see:

```
/msg "name_of_selected_user"
```

Private chat with "user_name":

This item will be visible only if private chat with selected user is not exist.

When item is selected private chat with selected user will be created.

Information about "user_name":

Information about selected user will be shown: nickname, computer name, windows login name, chat version.

Ignore private messages of "user_name":

If this item is selected for the selected user chat will not show private messages of the selected user.

Ignore all messages of "user_name":

If this item is selected chat will ignore all messages from the selected user.

Items that will be shown is private chat or line is selected.

Join line

This item will be shown only for private lines.

Join private chat

This item will be shown only for private chats.

Items that will shown always.

Private message to all

Send private message to all connected users. In the message editor you will see:

```
/msg *
```

Create line

Create line and enter in it.

Refresh list

Refresh list of users. If common chat is selected then list of users in all chats and lines will be refreshed. If private chat or line is selected only list of users of this line or chat will be refreshed.

Private chat

Private chat is a chat between you and one of users.
Nobody else will see this chat in list and nobody else can enter in it.

Creating:

1. Select necessary user and press right button of mouse.
2. In menu select it, **Create private chat**. If this item is absent it means that private chat with this user already exists and you should look for it in the list or selected name is private chat or line.

If these two users will close this private chat it will be automatically closed.

Private messages

You can send private messages by two methods:

1. This will work on both types of editors.
 1. Check necessary users in list of users.
 2. Type necessary message.
 3. Press **Alt+Enter**
2. This will work only in single line editor.
 1. Select necessary user in list.
 2. Press right button of mouse. In menu select item "Private message". Text **/msg "User"** will appear in message editor. You also can type this text manually. You can also enter some names of users. The delimiter is ";".
 3. Type necessary message.
 4. Press **Enter**.

After the sending of message on the first page of chat you will see if user received this message or no.

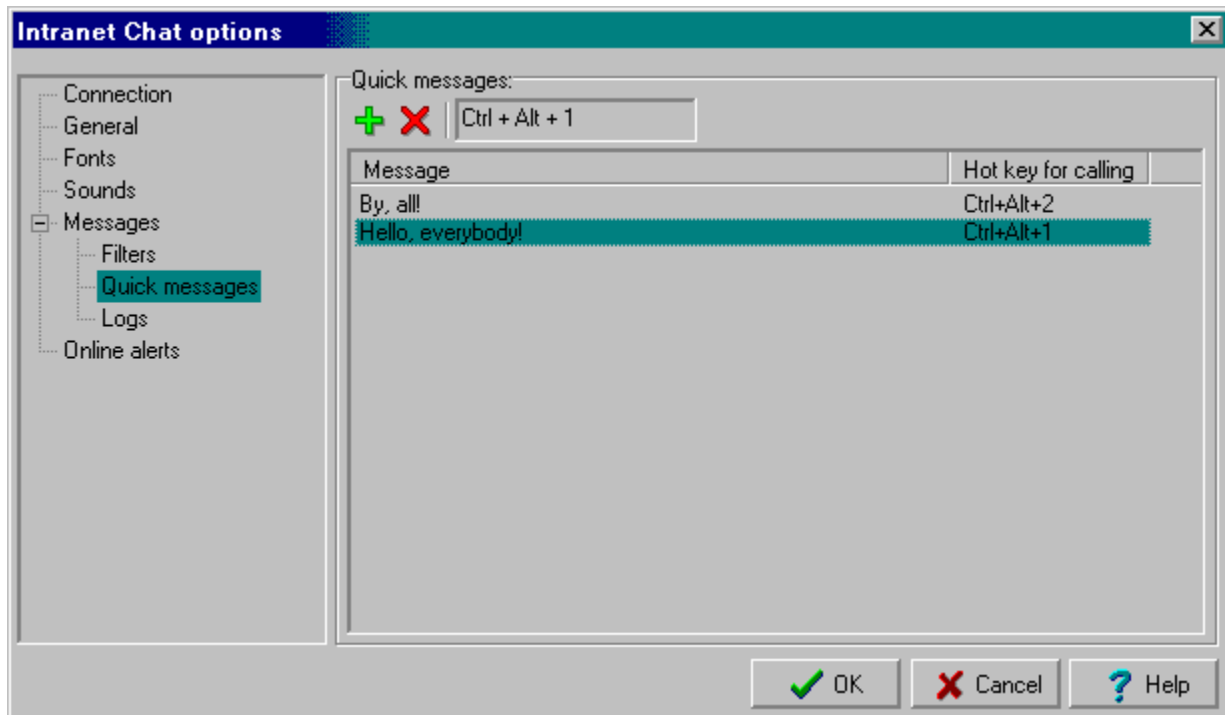
You will see "**<User> reveived your message**", if chat of user is in **Normal** state.

You will see "**<User>. Answer for "Don't disturb on mass message" mode**" if chat of user is in **"Don't disturb on mass message"** mode and you have sent message to more then one user.

You will see "**<User>. Answer for "Don't disturb" mode**" if chat of user is in **"Don't disturb"** mode.

You will see "**<User>. Answer for "I'm away" mode**" if chat of user is in **"I'm away"** mode.

Quick messages



You can set on words or on word-combinations that you use very often hotkeys. By this you can very quickly insert them into the edited message.

To add them into the message you can use hotkeys or popup menu that will appear when you will click on button "Choose quick message" in toolbar.

You can use F2 button to edit message.

Sending messages

Chat supports single line and multi line editors for typing messages.

The type of editor can be changed from ,menu **Options/Use single line editor** or by hotkey **F4**.

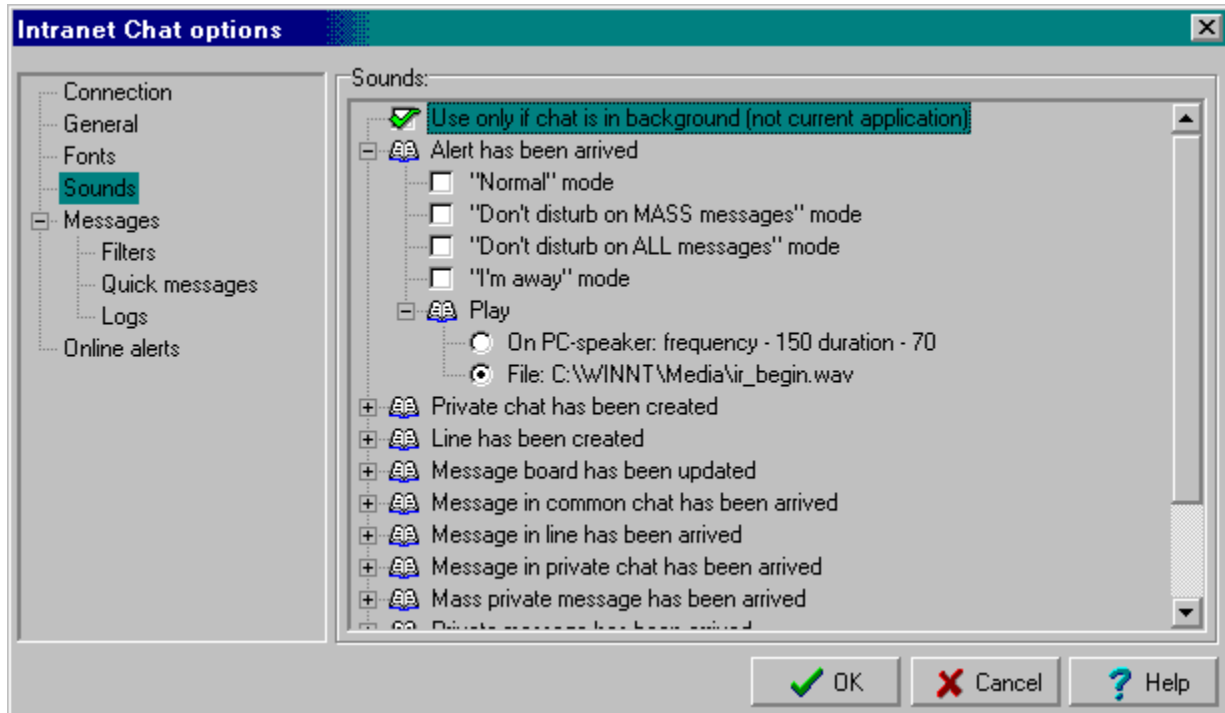
When you will use single line editor message will be automatically sent when you will press **ENTER**.

If you will use multi line editor you can send typed text using **Ctrl+Enter**.

If some text was selected in multiline editor this text will be sent in this case.

For sending private messages use **Alt+Enter combination**.

Sounds



Use only if chat is in background:

If this parameter is selected, sounds will be played only if chat is in background.

Below for each type of events you can select type of sound and states of chat when sound will be used:

"Normal" state:

If selected sound will be played if this state of chat is selected, In other case sound will be not played.

"Don't disturb on mass messages" state:

If selected sound will be played if this state of chat is selected, In other case sound will be not played.

"Don't disturb on private messages" state:

If selected sound will be played if this state of chat is selected, In other case sound will be not played.

"I'm away" state:

If selected sound will be played if this state of chat is selected, In other case sound will be not played.

Play

PC-speaker: frequency - x duration - y:

Play signal with frequency x and duration y on internal PC-Speaker.

File: name of file:

If during the work it will be impossible to play this file using your sound card (if your sound card will play something else and it doesn't support more than one channel) the signal on internal PC-Speaker will be played.

For changing frequency and duration or name of file use double mouse click on necessary item. You can also test sound in dialog that will appear.

States (modes) of chat

State of the chat determines how it will react on received messages. You can change state by selecting item in menu **State**, or by selecting necessary button in Toolbar, or using keys **F3/Shift+F3**. When one of states excepting **Normal** was selected and chat receives private message it will send answer that was set for this state to the sender of this private message (See part Messages of this help). The state of the chat is shown on icon in systray and in the list of users.

Chat can be in one of these states:

Normal:

This is ordinary mode. All messages are received.

Don't disturb on mass messages:

If chat is received such message this message will be shown in main window but the main windows will be not shown. Only signal flag will be shown in systray. The sender of private message will receive message that was set for this state. Letter "M" (mass message) will be shown on the icon of chat if this mode is selected.

Don't disturb on private messages:

If this mode is selected chat will be not shown on any received messages. Only signal flag will be shown in systray. The sender of private message will receive message that was set for this state. Letter "D" will be shown on the icon of chat if this mode is selected.

I'm away:

This mode is very usefull if you will absent during some time. If this mode is selected chat will be not shown on any received messages. Only signal flag will be shown in systray. The sender of private message will receive message that was set for this state. Letter "A" will be shown on the icon of chat if this mode is selected.

Toolbar.

Buttons on the toolbar are divided on 4 groups

1. Buttons for working with message window.
2. Buttons for switching modes.
3. Options and quick messages.
4. Buttons with the same functions like in popup menu on systray icon

Buttons for working with message window.

Clear:

Clear message window of current tab.

Refresh list of users:

Refresh list of users. If common chat is selected lists of users in all chats and lines will be refreshed. If private chat or line is selected on list of users in this chat of line will be refreshed. If message board is selected contents of message board will be updated.

Buttons for switching modes.

Normal:

All messages will be received.

Don't disturb on mass private messages:

Chat will not disturb you on private messages that were set not only for you.

Don't disturb on all private messages:

Chat will not disturb you on all messages.

I'm away:

When you will be absent for some time you can set this mode and message for this mode.

Options and quick messages.

After pressing button **Messages** popup menu will appear. It will contains list of all quick messages (see [Quick messages](#)). You can select necessary message and it will be added to the message editor from current position of cursor.

After pressing button **Options** popup menu will appear. It will contain next items.

Parameters:

Dialog of chat options.

Always on top:

Main window of chat always will be on top of other windows.

Use single line editor:

Set type of message editor (single line/multi line).

Show private messages in popup windows:

Private messages will be shown in popup windows.

Filter private message:

All received private messages will be filtered using set filters.

State:

Normal:

All messages will be received.

Don't disturb on mass private messages:

Chat will not disturb you on private messages that were sent not only for you.

Don't disturb on all messages:

Chat will not disturb you on all messages.

I'm away:

When you will be absent for some time you can set this mode and message for this mode.

Show state of chat in separated window:

State of the chat will be additionally shown in separated window (like in ICQ). You can move this window in most suitable place. It's very suitable when windows taskbar is automatically hided. This window has the same popup menu like systray icon and double click by mouse on this window will show main window of chat.

Buttons with the same functions like in popup menu on systray icon

Descriptions of this buttons are the same as descriptions of same items of popup menu in part **Popup menu**.

