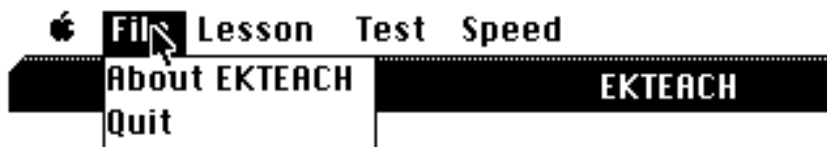


Brief Instructions for EKTEACH, Version 1.0

EKTEACH is intended to help teach some basic aspects of electrocardiogram (EKG) reading. This version was prepared using the Megamax C Development system V. 3.0d.

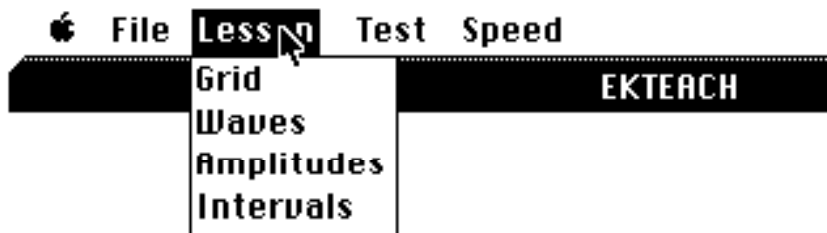
There are four menus: "Apple," File, Lesson, Test, and Speed. The Apple menu brings up desk accessories in the conventional manner. The File menu has only two items: About EKTEACH (ego screen), and Quit.



The Speed menu sets the rate of delivery of the animated parts of the lessons. the default speed is Medium, presumed to be a comfortable reading speed. Fast is most useful when skimming through the program and Slow is most appropriate when you feel guilty and want to punish yourself.



Use the Lessons menu to select an area for instruction.



The Grid lesson is concerned primarily with the calibrations of the EKG chart paper. Waves teaches the nomenclature of the fundamental waves and deflections. Amplitudes demonstrates the measurement of the voltages of the EKG deflections, and Intervals shows how the P-R and R-R intervals are measured. In all of the lessons there are two modes of program control. Some of the text and "animation" are automatic. In addition there appear, on strategic occasions, buttons in the lower right area of the screen with inscriptions such as More?, Next?, or Done?. When this happens, the program flow is suspended until the user clicks on the button. There may also be a button above these with Quit?. Clicking on this

button permits the user to exit the program and return to the finder.



The three items in the Test menu invoke test modules intended more for review than for evaluation of the student. The EKG tracings that appear in these sessions should appear different from those in the lessons, but of reasonable morphology. The Waves test requires the user to respond by clicking on the requested deflection. A Help button is available for the perplexed. The Amplitudes and Intervals tests require a keyboard response. The user's answer appears in a dialog box in the upper right portion of the screen, and s/he must click the OK button in order to "enforce" the answer.

Note: Do not use the finder option Set Startup on this program.

For questions or bug reports, please contact:

Stephen Dubin, V.M.D., Ph.D.
269 Orchard Road
Springfield PA 19064

or (preferably) send EMAIL to:

CIS: 76074,55 or DELPHI: ESROG or Genie: S.DUBIN