

# System Informant™

A System Resource Monitor For Windows95 and Windows NT 4.0

Copyright © 1996 New Order Software

Written by: David Bowden

July 25, 1996 amended December 31, 1996

## CONTENTS

[Introduction](#)

[Feature List](#)

[Installing the System Informant](#)

[Using the System Informant](#)

[Configuring The System Informant for your Hard Drive](#)

[FreeWare](#)

## INTRODUCTION:

The System Informant Resource Monitor is yes, yet another system monitor for developers or System Administrators that are tracking overall system performance while running certain software applications.

Being a developer, screen real-estate is of vital importance to me, and while other developers have created real nice resource monitors they are typically always in the way. The System Informant changes all of that. This resource monitor is designed to run either as a Stay On Top caption-less dialog or from the Windows95 Task Bar where it is out of the way all of the time by still providing you with some very necessary information. I also added some other features (simple ones but nice) to draw your attention to the monitor when it is in a maximized state. The features are as follows:

## FEATURE LIST:

- 1- Monitor can be displayed in a Maximized window and placed anywhere on the Windows95/NT 4.0 Desk top. (remembers previous location.)
- 2- Monitor can be run minimized from the Windows95/ NT 4.0 Task bar. (remembers this location)
- 3- In the maximized mode, the monitor will alert you as to the change in system resources. If any of your resources fall below 60% the monitors panels will turn bright yellow. If your resources fall below 35% the monitors panels will turn bright red and the value for that resource will begin to flash.
- 4- Monitor will now display a selected hard drives capacity information and provides you with the ability to set the graphical warning values. Hard Drive information is also provided when the program is minimized. Please note that if you do not have enough room on the task bar to show all of the systems resources you will see a ... message to the right of the tile indicating that there is more information to be seen when maximized or when more applications are shut down.

## INSTALLING THE SYSTEM INFORMANT RESOURCE MONITOR:

Installing the monitor is simple. Just run the Setup.exe. Answer any and all questions during the set up and the monitor will be installed automatically. Installation software provided by InstallShield Corporation.

Once installed, make a short cut and copy it into the StartUp group for Windows. This way the monitor is always running when your system starts up.

NOTE: This version of the System Informant is a PKZIP only. To install the program, simply unzip it to the desired directory and then add it to your start up group either from MY COMPUTER or the Task Bar controls. There is a version of the System Informant on CompuServe that has a full InstallShield installation. To find this version, go to the Windows Shareware forum, the Borland Delphi 16 and 32 forums or the Visual Basic Forum.

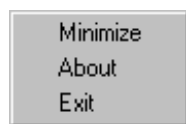
## USING THE MONITOR:

Using the System Informant is real easy. When running in the maximized mode (as seen below)



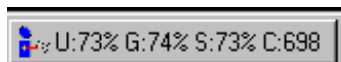
you can click on any area in the form to move it to a new location. It will default to Top 100, Left 100 when it first comes up. The monitor will also default to the maximized window state when you first run the program. The program will update itself every second, and upon exiting it will record its screen position and its window state. The default value for your hard disk is Drive 'C'.

To access the menu for minimizing, exiting and the about box, place your mouse over the form and 'Right Click' over the form. A PopUp window will appear with the following selections:



To make the System Informant stay in a minimized state do the following:

1. Launch the System Informant.
2. Right Click to obtain the PopUp Menu.
3. Select Minimize.
4. When the applications tile appears in the Window95/ NT 4.0 Task bar, place you mouse over the tile and right click once.



Right Click over this tile.

Then select 'CLOSE'. This will exit the application, but at the same time it will cause the program to write in the INI file that it is to be run from the minimized state next time and until changed.

When running in the minimized state you can see from above that the system resource designations are abbreviated. This is to save space on the Task Bar so that all the resources can be seen at one time. This will vary based on monitor size, and the amount of applications running at one time. The abbreviated designations are as follows:

U: = User Resources  
G: = GDI Resources  
S: = System resources  
C:= Hard Drive and its current available space

### **Configuring The System Informant for your Hard Drive**

The System Informant can track any of 26 available hard drives. These are values represented in the System Informant INI file located in the Windows System Directory (Inform.INI). This INI has the following default entries:

#### **[Config]**

Top=723  
Left=0 ← DO NOT CHANGE ANY OF THESE VALUES  
State=1

#### **[Disk\_Type]**

DiskType=3 ← This entry determines which drive will be tracked.  
Value range is 0 to 26  
The default value is 3 for Drive C.

#### **[Disk\_Warn]**

DriveYellow=100 ← This entry is the remaining hard drive space to trigger the yellow warning.  
DriveRed=50 ← This is the remaining hard drive space to trigger the red flashing warning.

To edit these values make sure the System Informant is closed down, then simply open this INI file with Notepad (C:\windows\Inform.ini) and change them to your desired values. Save the file and exit. The next time you run the System Informant the changes will become your new values.

Sorry, I just could not justify adding a new form and code to change three INI values. If you are smart enough to know what these resource values mean then you ought to be able to edit an INI just once. <<BG>>

### **FREEWARE**

This program is FREEWARE. For new versions or Technical Support contact:

New Order Software  
Attn: David Bowden  
P.O. Box 975344  
Hoffman Estates, IL 60195-7344

CompuServe: 72633,1626

<http://homepage.interaccess.com/~ldiehl/no.htm>

FAX: 847-202-1207