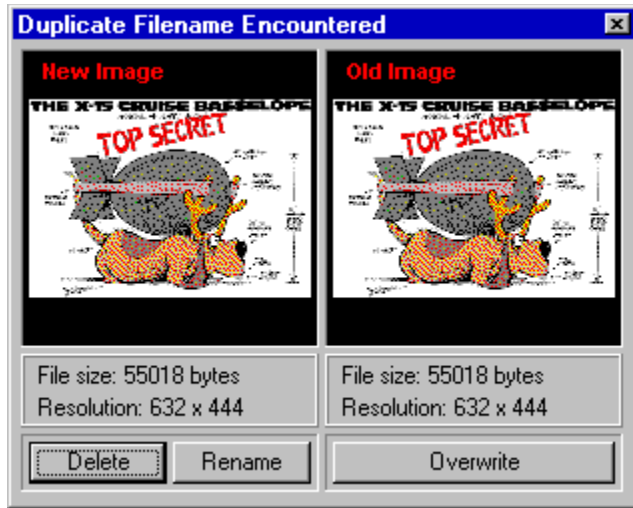


Advanced Sifter Features



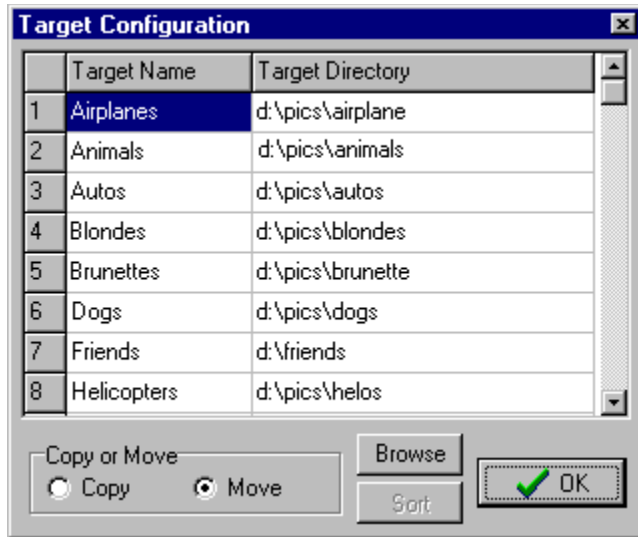
If you ask Sifter to move or copy a file into a directory which already contains a file with the same name, you will be presented with the above form.

Delete - Permanently deletes the new image (image you are trying to move or copy) from source drive.

Rename - Lets you rename the new image and then completes the move or copy utilizing the new name.

Overwrite - Permanently removes the old image (image already in the destination directory) from your source drive and replaces it with the new image.

Configure Targets -



Target Name - These are the names that will appear as *targets* on the main form when the *Use Targets* option is selected. These names may be anything you wish to use.

Target Directory - This is the location you wish files moved or copied to. In this way you can keep files of similar type in a single directory without going through the trouble of constantly switching directories inside of explorer (or file manager, etc.). In the event that you don't recall the exact path, use the *Browse* button to navigate to your desired directory.

Copy or Move - This is the setting for whether your files are moved into the *targets* or copied into the *targets*.

Sort - Though not yet implemented, this will *eventually* alphabetically sort the *targets*.

Contacting the Author

Larry F. Diehl III
P.O. Box 957344
Hoffman Estates, IL 60195-7344

102713.44@compuserve.com

<http://homepage.interaccess.com/~ldiehl/sifter.htm>

sifter

Contents

[Introduction](#)

[Basic Sifter Features](#)

[Advanced Sifter Features](#)

[TroubleShooting / FAQ](#)

[Registration](#)

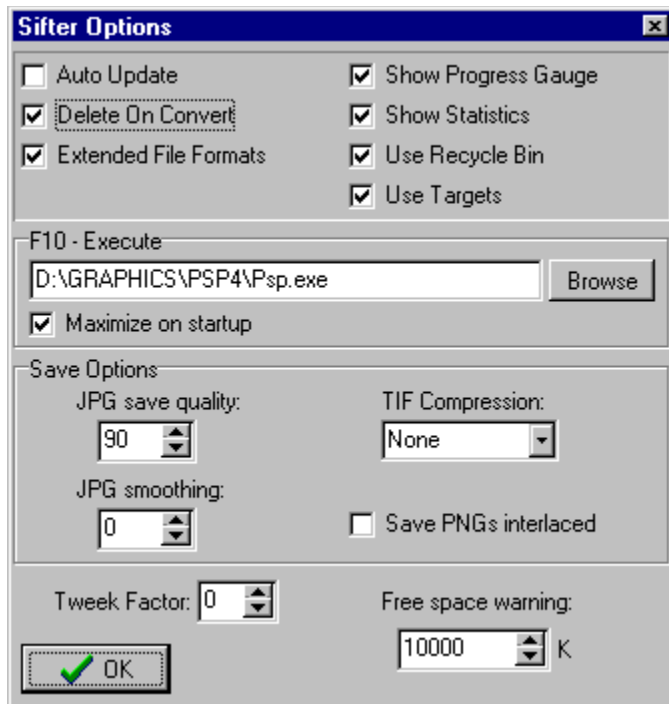
[Contacting the Author](#)

Deletes the current image.

[Click here to cancel without performing any action](#)

Files in current directory are listed here. Selected file is displayed in image window.

General options



Auto Update - When selected, the file list box will automatically update after every file operation. Otherwise, file names will change to **!-DELETED-** or **!-MOVED-** depending on what operation was performed. **Note:** For best performance, it is recommended to turn *Auto Update* off if the current directory contains over 500 images.

Delete On Convert - If this is checked, Sifter will delete the original file anytime you perform a conversion.

Extended file formats - When checked, Sifter will also view BMP, PCX, PNG and TIF images. These formats may also be converted to GIF or JPG. When unchecked, Sifter only views JPG and GIF.

Show Progress Gauge - When checked, the Sifter window will contain a bar with image statistics and a progress gauge directly above the image window.*

Show Statistics - When checked, the Sifter window will contain a status bar at the bottom displaying the total number of images in the current directory, confirmations of file operations and transfer statistics.*

Use Recycle Bin - When checked, all files will be deleted to the recycle bin (under Windows 95 and Windows NT 4.0). When unchecked, all files are permanently deleted **without** prompting.

Use Targets - When checked, the Sifter form will display 50 user configurable 'Targets' on the right side of the window. Targets are different directories to move your files to. This is for those of you who like to separate your graphics into different directories based on categories (ie. airplanes, autos, etc).*

***Note:** If this option is not selected, the image portion of the window will expand to occupy this area.

F10 - Execute -The program (EXE, COM, or BAT) specified here will launch anytime the F10 key is pressed from within Sifter. In most cases, you will wish to launch your favorite image editor or an alternative image viewer with this command.

Maximize on startup - When checked, the program specified as the F10 program will launch in full screen mode.

JPG save quality -The higher this number is the better the image quality and the larger the physical file size. The lower the setting worse the image quality and the smaller the physical file size.

JPG smoothing - 0 is no smoothing and 100 is full smoothing. Because of the lossy compression of JPegs, an image might be too hard, smoothing can give it a better look.

TIF compression - Different methods by which you may compress TIF images.

Save PNGs interlaced - When checked, PNG image files will be saved in interlaced format (when converting to PNG). This will have the effect of making the image appear to fade in, instead of being displayed in a traditional top down manner.

Tweek Factor - Compensates for 'jumping targets' which can be caused by certain combinations of screen resolution and font selection. If the Targets jump to the left when you click in the right column, you need to adjust this setting. Adjust one increment at a time and test until 'jumping' ceases.

Free Space Warning - Sets the amount of free space (on target drive) at which you wish to receive low space warnings. When target drive free space is equal to or less than this amount, a warning dialog will appear and the move/copy will be aborted.

Converts current image to a GIF with the same name as the original.

Currently selected file is displayed here. Clicking in this window will produce a full size view of the image.

Introduction

Welcome to Sifter! Sifter is an image sorting application which was produced to fill a need created by programs that automatically download images from the Internet. Allowing one of these programs to run overnight can easily result in over a thousand images to sort through in the morning, which can be quite a task with most graphics applications. The problem is, most graphics programs are designed to load, view and possibly edit images. To load, view and delete images can be an overly involved process replete with pull down menus and multiple clicks. Sifter addresses this problem by providing you with an interface that greatly simplifies this process. Sifter also allows for simple one-click categorization of images through the use of user-definable 'Targets'.

Converts current image to a JPG with the same name as the original.

Standard windows list boxes used to navigate about your computer's drives and directories.

Size and resolution information relating to the new image

The image you are attempting to move or copy into a target

Size and resolution information relating to the old image

The image which already resides in the destination directory

Registration

Sifter is currently available at <http://homepage.interaccess.com/~ldiehl/sifter.htm> in the 16 bit or 32 bit evaluation version. This version allows for small size viewing and deletion of images. The registered version has the following enhancements: full size viewing, full conversion from any of the following to any of the following: BMP, GIF, JPG, PCX, TIF or PNG, optional statistics, optional ability to move or copy files to user defined targets, and of course no nag screens.

The registered version of Sifter is available for \$20 in 16 bit or 32 bit. All registered users will receive free updates by email for 6 months or until development is finalized, whichever comes first. Sifter is not available for Macintosh systems nor are there any plans for a Mac version.

To register please send check or money order to the following address:

Larry Diehl
P.O. Box 957344
Hoffman Estates, IL 60195-7344

Please include your email address or an additional \$2 for return snailmail and whether you prefer 16 or 32 bit. For shipping outside of the United States, please include an additional dollar, for a total of \$3 shipping.

For your convenience, a simple order form is included in the evaluation version ZIP. Please complete this form and send it with your order.

Orders will be sent out within 48 hours except in the case of personal checks which may be delayed up to 7 days to insure sufficient funds are available.

Or, if you have a CompuServe account, you may register in the CompuServe Shareware Registration forum (GO SWREG) by using Registration ID: 12807. Registering through CompuServe is a little more expensive, due to associated costs. All CompuServe registrations include both email and US mail delivery.

Or, credit card orders can be accepted through the on-line ordering page located on the Sifter home page at <http://homepage.interaccess.com/~ldiehl/sifter.htm>

Comments and suggestions are always encouraged and appreciated.

Optional statistics area. Total images refers to valid image files in the current directory. Center pane will display confirmation of last file operation. Right pane provides statistics on file transfers.

Physical file size and resolution is shown here. During image loading, a progress gauge will show here.

Clicking on a square will copy or move the current file to the directory associated with that square. The name in each square is user customizable.

TroubleShooting / FAQ

Q: How do I cancel out of the duplicate file handling window when I decide not to do anything at all?

A: Close the window by clicking the small X in the upper right corner.

Q: How do I update the file listing after I switch floppy diskettes?

A: F5.

Q: Where do I set whether I want files moved or copied to the targets?

A: Under **Options**, select **Configure Targets**. The form that pops up has this option at the bottom.

Q: How do I see my images at their normal size?

A: Left clicking on any of the small image representations will provide you with a full size view of your image, or as much of it as will fit on your screen.

Q: I'd like it better if the buttons were up top near the menus, is there a way to do this?

A: Yes, click and drag the panel that the buttons are on, release at the top of the image window and it will reattach there. You may also leave it detached and place it anywhere on the screen that you wish.

Q: Why is the multi-delete function so slow? Why does multi-delete update the file listing? Why can't I view images when I'm in multi-delete mode?

A: Sifter was never designed with multiple deletetions in mind. This functionality has been added only because many people requested it. If you find it cumbersome or slow, it is because multiple deletions fly in the face of the basic functional concept of Sifter. This is currently the most graceful implementation available without a complete program rewrite (in the future).

Q: Is there a way to quickly switch the source directory to one of my target directories?

A: SHIFT-CLICK on a Target.

Q: Occasionally I get an error from Sifter that it cannot get the module handle, what does this mean?

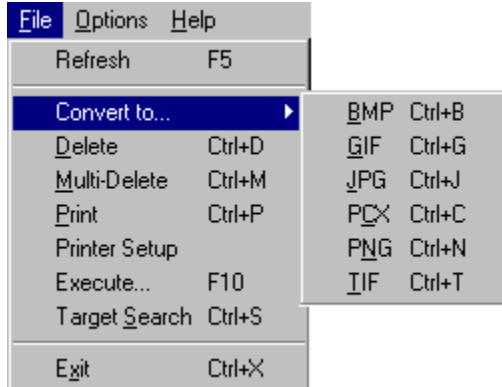
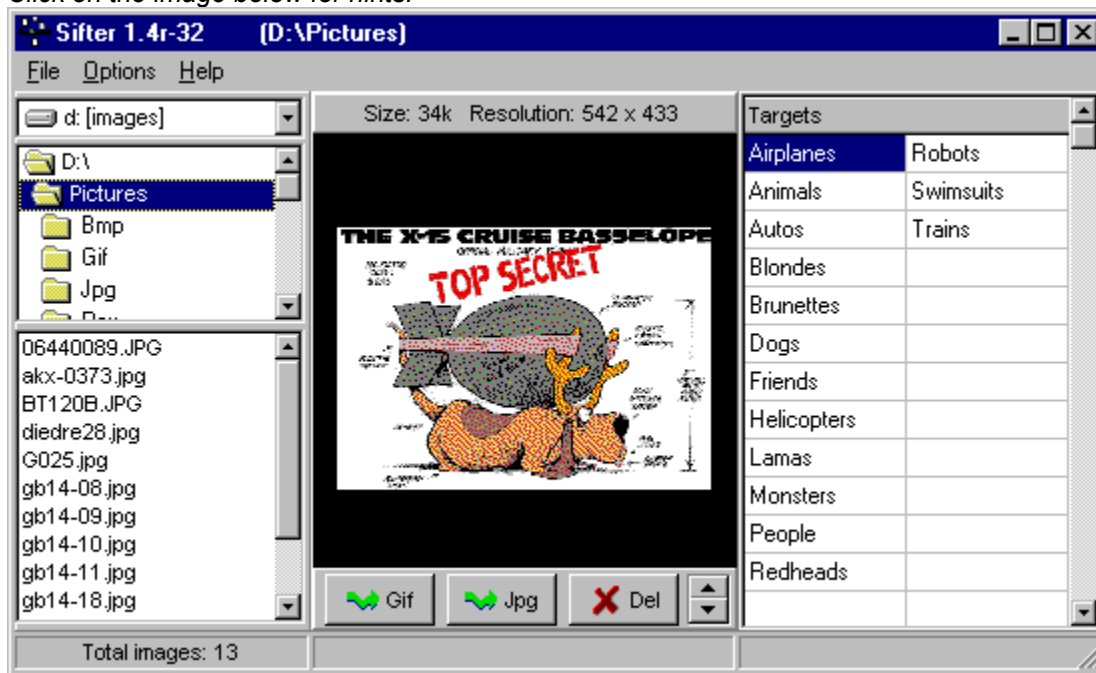
A: In most cases, this is an image that contains corrupt data. Sifter will not load the image if it's integrity has been compromised. Also, in rare cases this can be caused by a progressively encoded JPG. Sifter does **not** currently support progressively encoded JPGs.

Q: Some of my JPGs won't load, Sifter just sits there and does nothing, why?

A: Most likely, this is a progressively encoded JPG. Sifter does not currently support progressively encoded JPGs.

Using Sifter

Click on the image below for hints.



Refresh (F5) - Updates the file list box and returns you to the first filename. Does not load an image

Convert to... - Allows you to convert the current drawing to any of the supported file formats. File is saved with the current name and the appropriate extension.

Delete - Deletes the currently selected file. **[32bit only]**

Multi-Delete - Allows you to select and delete multiple files. When you select this, the file listing will update and images will no longer be displayed. Select all files that you wish to delete and click the delete button. After all the files you selected have been deleted, the file listing will again update and you will be returned to regular single file mode.

Print - Prints the currently selected image. Image will be sized to maximum size possible on a single sheet of paper.

Printer Setup - Standard windows printer setup dialog.

Execute - Launches the program you specified as your F10 launch program. This will normally be your favorite image editing program or an alternative image viewer.

Target Search - Searches all your Targets for any file names matching the currently selected file. For those times when you think you already have the image, but you're not sure where you put it.

Exit (Ctrl+X) - Terminates Sifter



General - General program options may be adjusted from here.

Configure Targets - Allows you to setup names and directories for the *targets*

Font - Standard windows font dialog allowing adjustmwnt of all main screen fonts.



Contents - Launches the associated Sifter help file which you are currently viewing.

About - Brings up the Aboutbox which is filled with additional 'useful' information. Version and build date information can be found here and should be included in all technical support related email.

Moves you up or down by one image in the file listing. Same as using keyboard arrows.

