

Printscreen 95 V4.0

For Windows 95, 3.1 & NT

© Super Simple Software - Los Angeles, CA

To print the **full screen** press the Print Scrn Key.

To print the **selected active window** press Alt + Print Scrn.

To print a **specific portion** of the screen click the Select Area button.

To print full screen **DOS sessions** check <Enable Dos Print>.

To print a **negative image** check <Invert Colors>.

To **enlarge the image** to full page check <Stretch to Full Page>.

Click on each of the topics below for a more complete description.

[Enable Print Screen](#)

[Enable Dos Print](#)

[Save Image File](#)

[Invert Colors](#)

[Stretch to Full Page](#)

[Select Area](#)

[Save Settings](#)

[Printer Setup](#)

[Enable](#)

[Disable](#)

[Files](#) <Menu>

[Minimize](#) <Menu>

[Help](#) <This Help File>

[The One Shot Option](#)

[Printing to a Fax Driver](#)

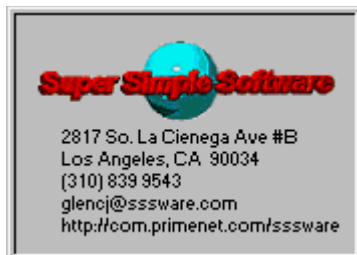
[Network requirements](#)

[Technical Support](#)

[Registration / Ordering Printscreen 95](#)

[Site Licenses](#)

[License Agreement](#)



Printscreen 95 License Agreement

Printscreen 95 (Hereafter referred to as the Software) is a Copyrighted product of Glen C. Johnson, dBA Super Simple Software in the State of California. This version is distributed via electronic media as a Shareware product, and in this form, may be distributed without restriction for the purpose of evaluating the Software prior to purchase. The Shareware version is compiled with a 50 session limitation. Following registration of the Software and payment of the \$19.95 registration fee, the user is provided a registration number which removes the shareware 50 session limitation, and upon request, a diskette copy which does not contain the shareware limitation. It is a violation of U.S. Copyright Law and intellectual property rights to provide this registration number to any other person(s) without the author's permission; or to copy or distribute electronically the licensed diskette software. As a registered user you may:

- use the Software on any single computer;
- use the Software on a network, provided that each person accessing the Software through the network is licensed for its use;
- use the Software on a second computer owned or operated by the licensed user;
- copy the Software for archival purposes, provided any copy must contain all of the original Software's copyright notices.

You may not:

- modify, translate, reverse engineer, decompile, disassemble (except to the extent applicable laws specifically prohibit such restriction), or create derivative works based on the Software;
- copy the Software other than as specified above;
- resell the Software for profit without the author's permission;
- remove any proprietary notices or labels on the Software.

Title, ownership rights, and intellectual property rights of the Software shall remain with Super Simple Software. The Software is protected by United States and international copyright laws and treaties.

The GIF™ and TIFF™ image compression used in this program is licensed under U.S. Patent No. 4,588,302 and foreign counterparts.

Network requirements

• **NETWORK USERS** • A "Printer Error" message can occur in Network applications if the Network Printer Name includes space characters. [Example](#) - "HP Laserjet 4si" must have the spaces removed, and the printer renamed to "HPLaserjet4si" to avoid the problem. This is a "bug" with Visual Basic printer applications which is documented in the [Microsoft Knowledge Base](#). Another symptom of this problem has been reported in which the error message does not occur, but the printout fails to be generated.

(C) 1996-1997 Super Simple Software

Technical Support

[Telephone Technical Support](#) is available for Printscreen 95 Mon. - Fri., 8:00 am to 5:00 pm
Pacific Standard Time.

Tech Support Phone: (310) 839 9543

24 hr Tech Support Fax: (310) 839 9280

Technical Support E-Mail: glencj@ssware.com

(C) 1996-1997 Super Simple Software

Printscreen 95 Order Form

(Click the Print button above to print this form.)

PLEASE TELL US WHERE YOU RECEIVED YOUR COPY OF PRINTSCREEN 95?
ONLINE SERVICE.....INTERNET.....BBS?.....MAGAZINE?.....

YOUR NAME.....

COMPANY.....

ADDRESS

CITY.....STATE.....

COUNTRY.....ZIP \ POSTAL CODE.....

PHONE.....FAX.....

E-MAIL ADDRESS.....

• **CREDIT CARD ORDERS** • Visa, MasterCard, American Express accepted.

Credit Card type & number.....

Expiration Date.....

• To place a credit card order via telephone dial (310) 839 9543 • 8am-5pm pacific •
• **24 Hour Order Fax Line: (310) 839 9280 • Corporate Purchase Orders accepted.**

PRICING AND SITE LICENSE INFORMATION:

1 - 9	\$19.95	Per Copy / User
10 - 24	\$15.00	"
25 - 49	\$9.00	"
50 - 99	\$7.00	"
100 - 199	\$5.00	"
200 - 1000	\$ 995.00	(Flat fee)

(Site license for quantities above 1000 users = \$1.00 per user.)

NUMBER OF COPIES OF PRINTSCREEN 95 _____ @ _____.

TOTAL = \$_____.

Select Delivery Method:

Registration Code via fax or E-Mail []
3½" diskette via regular mail []

PLEASE MAKE CHECK OR MONEY ORDER PAYABLE TO:

Glen Johnson
2817 So. La Cienega Ave #B
Los Angeles, CA 90034

You can also register via **CompuServe**
at keyword **GO SWREG**. Use file ID #7206

(C) 1996-1997 Super Simple Software

Disable

The [Enable](#) button is used along with the [Disable](#) button to activate or deactivate the Printing and Save Image features using all three selection methods: [Print Scrn](#), [Alt + Print Scrn](#) and [Select Area](#). This feature is provided in order to allow you to copy the screen or active window to the Windows Clipboard and make the image available to paste into another application such as MS Word, PowerPoint or an image editing program. When Printscreen 95 is re-activated using the [Enable](#) button, the screen or active window images will then be sent to the printer instead of remaining on the clipboard.

- **Note** • The One Shot option is a separate program which is installed with the Printscreen 95 setup application. A separate shortcut is created which can be executed to print the full screen [without](#) acquiring the image from the Windows [clipboard](#). After printing the screen the One Shot program automatically [terminates](#). This mode can be used [instead](#) of leaving the main Printscreen 95 program running in the background.

Stretch to Full Page

The [Stretch to Full Page](#) option will enlarge the captured image to fill the full page width and height. The aspect ratio of the original image is not maintained, however. In order to maintain the approximate aspect ratio, a screen, window or selected region that is wider than it is tall should be printed in Landscape Mode. An image that is taller than it is wide should be printed in Portrait.

(C) 1996-1997 Super Simple Software

Select Area

The [Select Area](#) feature allows you to draw a rectangle on the screen using the mousepointer, and print or save the area within the rectangle. The procedure requires [2 clicks](#) of the Select Area button to operate. The first click will cause the main Printscreen 95 window to minimize, and the Select Area button will re-display in the lower right-hand corner of the screen and begin flashing. Click the button again to initiate the capture mode. After a few seconds the mousepointer will change to a "+" and the ["Capture ready..."](#) message will appear at the bottom of the screen. Position the mousepointer in the upper left corner of the area you wish to capture. Press and hold the [left](#) mousebutton and drag the mousepointer [down](#) and to the [right](#). A dotted rectangle will be drawn. When the rectangle covers the desired area, release the mousebutton. The area selected will immediately be printed and/or captured, depending on the options selected on the main Printscreen 95 Window.

- **Note** • After you begin to draw the capture rectangle, the procedure cannot be aborted or re-initiated if you discover you've slightly "missed" the desired capture area. Simply click the Select Area button and try again. (Also, if the mousepointer is not moved between the Mouse_Down and Mouse_Up events, a zero size area capture will produce an error, and you will have to restart the program.)

Save Settings

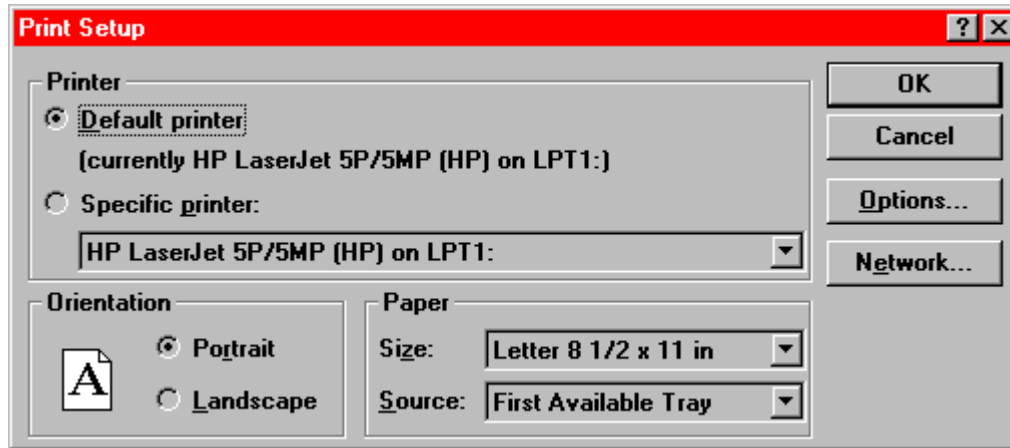
The [Save Settings](#) button is used to save the options selections from the Main Printscreen 95 window into the prtscr95.ini file. Included are the selections available in the [Configure User Options Menu](#). When the [OK](#) button is selected to save the Configure User Options values, all settings in the prtscr95.ini file are re-saved. It is not necessary to also click the [Save Settings](#) button.

• **Note** • The Enable and Disable radio button values are not saved in the .ini file.

(C) 1996-1997 Super Simple Software

Printer Setup

The [Printer Setup](#) button displays the Windows Printer Setup Dialog which provides the user selections for the printer to receive the Printscreen 95 output and printer setup features such as orientation (portrait or landscape), and paper size, as well as advanced device options specific to the printer being used. The Printer Setup Dialog is shown below. Select the Options button to access the advanced device options mentioned above. These include port selection, printer memory and Network options.



• **Note** • The Visual Basic Printer object outputs to the default Windows printer. The selections made for printer type (driver) and other options are saved as the Windows defaults.

Enable Print Screen

Check [Enable Print Screen](#) to activate the [full screen](#) and selected [active window](#) print modes using the Print Scrn Key and Alt + Print Scrn methods. This option must also be selected in order to use the [Select Area](#) feature to [print](#) specific portions of the screen.

• **Note** • Image files may be saved from screen captures by checking the [Save Image File](#) option, regardless of whether [Enable Print Screen](#) is selected. The two modes operate completely independent of one another.

Help file generated by VB HelpWriter.

Enable

The [Enable](#) button is used along with the [Disable](#) button to [activate](#) or [deactivate](#) the Printing and Save Image features using all three selection methods: [Print Scrn](#), [Alt + Print Scrn](#) and [Select Area](#). This feature is provided in order to allow you to copy the screen or active window to the Windows Clipboard and make the image available to paste into another application such as MS Word, PowerPoint or an image editing program. When Printscreen 95 is re-activated using the [Enable](#) button, the screen or active window images will then be sent to the printer instead of remaining on the clipboard.

• **Note** • The One Shot option is a separate program which is installed with the Printscreen 95 setup application. A separate shortcut is created which can be executed to print the [full screen](#) [without](#) acquiring the image from the Windows clipboard. After printing the screen the One Shot program automatically terminates. This mode can be used [instead](#) of leaving the main Printscreen 95 program running in the background.

Invert Colors

The [Invert Colors](#) option produces a [negative](#) print image, which helps to save toner when printing windowed "DOS Boxes", or other screens with dark backgrounds and light text. The Invert Colors option is only available for printed images, and has no effect on saved image files.

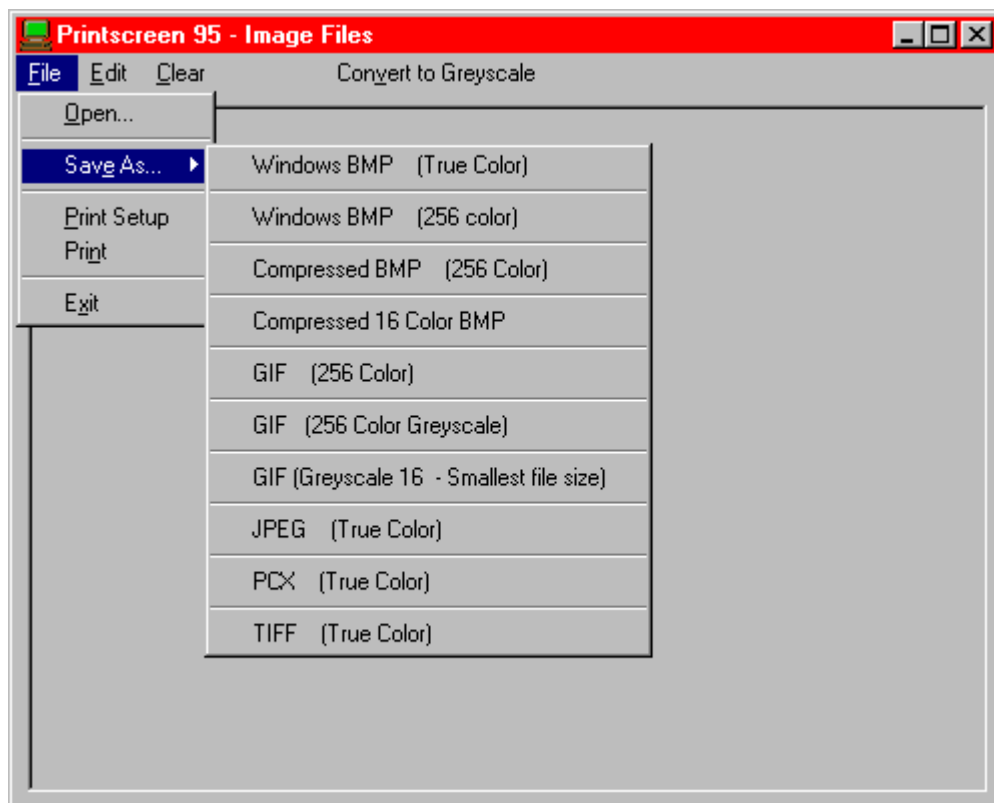
(C) 1996-1997 Super Simple Software

Save Image File

Check [Save Image File](#) to save the captured screen, window or selected region to an image file using one of the following formats:

- Windows BMP (True Color)
- Windows BMP (256 Color)
- Compressed BMP (256 Color)
- Compressed 16 Color BMP
- GIF (256 Color)
- GIF (256 Color Greyscale)
- GIF (Greyscale 16 Color)
- JPEG (True Color)
- PCX (True Color)
- TIFF (True Color)

The image generated using the [Print Scrn Key](#), [Alt + Print Scrn](#) or [Select Area](#) method will be re-displayed in the Save Image window. From the [Files](#) Menu at the top of the screen, select [Save As...](#) to save the image to one of the file formats listed above. The figure below shows the Save Image window with the Files Menu open to display the available formats.



Enable Dos Print

Check [Enable Dos Print](#) to print full screen Dos sessions using the [Print Scrn](#) key. Many DOS based programs use ANSI line draw characters to form lines and boxes on the screen. The Windows printer and display character sets do not recognize ANSI line draw characters, and will substitute + and - sign characters. Any informational text data should print correctly.

The Dos Print Mode is a [text-only](#) function, and does not support DOS graphics. You can print graphic screens in DOS applications by pressing [Alt + Enter](#) to change the Dos prompt to a Windowed "[DOS Box](#)". The Dos prompt then becomes the active window, and will print in graphic mode using Alt + Print Scrn. In Windows 95 the DOS Window can be maximized to fill approximately 80% of the screen. In this mode the screen image is compressed vertically about 20%, which changes the aspect ratio slightly, but the screen information should still be legible in the final printout. Windows 3.1 will only display the DOS Window at about 50% of the full screen size. The print resolution in this situation can be improved by selecting [Stretch to Full Page](#), and printing the screens in Landscape Mode.

Files

The **Files Menu** contains the following 2 submenus:

Work with Image Files
Configure User Options

(C) 1996-1997 Super Simple Software

Minimize

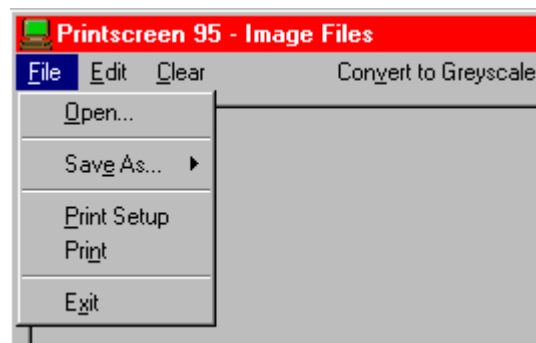
Select the [Minimize](#) menu option to minimize the Main Printscreen 95 Window. This option was changed to a menu selection after confusion was expressed by Windows 95 and Windows 3.1 users concerning the fact that the standard "minimize" button at the upper right corner of the window is different in each operating system.

(C) 1996-1997 Super Simple Software

Printscreen 95 - Image Files

The [Work with Image Files](#) menu selection displays the Printscreen 95 Image Files Window. The Image Files Window can be used as a graphic file viewer and convertor to open, view and save image files in the following formats:

- Windows BMP (True Color)
- Windows BMP (256 Color)
- Compressed BMP (256 Color)
- Compressed 16 Color BMP
- GIF (256 Color)
- GIF (256 Color Greyscale)
- GIF (Greyscale 16 Color)
- JPEG (True Color)
- PCX (True Color)
- TIFF (True Color)



The Image File Window menu selections are shown in the figure above. Typical options are selectable to [open](#), [save](#) and [print](#) image files. The [Edit](#) Menu allows you to [Copy](#) and [Paste](#) images to and from the Windows Clipboard. Select [Convert to Greyscale](#) to convert the image currently displayed to 256 Shade - 8 bit greyscale. (Black & White.)

• The Advanced Print Options •

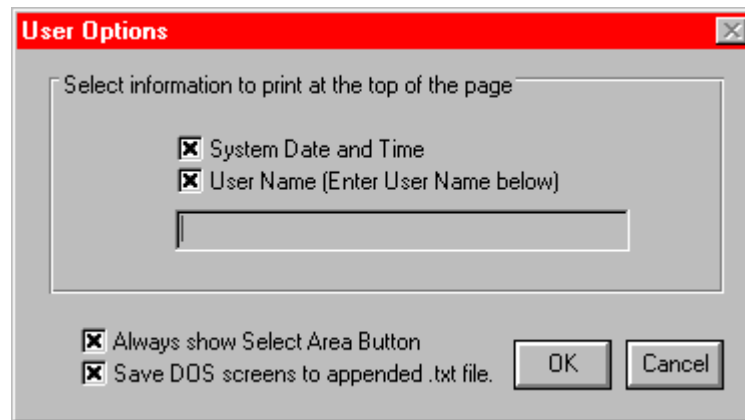
An image displayed in the [Image Files Window](#) can be printed using a higher level of printing code by selecting the [Print](#) option from the [File](#) Menu. The [Advanced Print Dialog](#) shown below is displayed before the print operation is initiated. Options are available to position the image on the page, select the Printer Halftone mode (pattern format) and center the image on the page, if desired. This print mode [must be selected](#) in order to use a [FAX Printer driver](#) if you want to send an image as a fax output. The standard print modes using the Enable Print Screen selection are not fax-compatible. Check the [Save Image File](#) option [instead](#) of Enable Print Screen. When the screen re-displays in the Save Image Window, select Print from the File menu.

Print [X]

Position Top: 1500.0 Twf Left: 0.00 Twf Center	Printer HP LaserJet 5P/5MP (HP)
Size Width: 4612.6 Twf 1441 % Height: 2893.6 Twf 1446 % <input checked="" type="checkbox"/> Allow Distortion <input type="checkbox"/> Smooth Actual Fit to Page	Halftone Type: Angle Dot Screen Screen: 141 lpi Print Cancel

(C) 1996-1997 Super Simple Software

User Options



The **Configure User Options** screen contains the following selections:

Select information to print at the top of the page

User Name

System Date and Time

Always show Select Area Button

Save DOS screens to appended .txt file.

Always show Select Area Button

This option is provided to make the [Select Area](#) feature easier to access when used frequently. The Select Area button will remain displayed in the lower right hand corner of the screen where it can be easily operated without having to re-display the main Printscreen 95 window. (With the Select Area button already displayed, only a single click is required to initiate the capture mode.)

(C) 1996-1997 Super Simple Software

Save DOS screens to appended .txt file.

This option is provided to save DOS screens to an appended text file [instead](#) of printing. Successive Print Scrn key operations in full screen DOS prompts will be written to the default .txt (Log) file named [<dosapp.txt>](#), in the current directory. If a different filename is desired, you can specify any name you choose.

(C) 1996-1997 Super Simple Software

User Options, User Name

Use this option to print the [User's Name](#) or other specified information at the top of each page. Up to 80 characters can be entered in the field below the User Name checkbox.

• **Note** • Click the OK button to save the selections in the Configure User Options screen into the prtscr95.ini file. It is not necessary to re-select Save Settings for these options.

(C) 1996-1997 Super Simple Software

User Options, System Date and Time

Select this option to print [System Date](#) and [Time](#) at the top of each printed page.
This feature is supported in both the [Windows](#) and [DOS](#) print modes.

(C) 1996-1997 Super Simple Software

The One Shot Option

The [One Shot](#) option is a separate program which is installed with the Printscreen 95 setup application. A separate shortcut is created which can be executed to print the [full screen without](#) acquiring the image from the Windows [clipboard](#). (Printscreen 95 acquires images to print or save from the Windows clipboard. If you want to copy a screen or active window to the clipboard and make it available to paste into another application, such as MS Word or PowerPoint, etc..., you can either click the [DISABLE](#) button, or use the [One Shot](#) mode for screen prints [instead](#) of running the main Printscreen 95 program in the background.)

After printing the screen the [One Shot](#) program automatically [terminates](#). No active memory resident program is left running.

If the One Shot mode is to be used frequently, you can set up a [short cut key](#) such as CTRL + ALT + P using the following steps:

- RIGHT CLICK the Start button
- Select OPEN
- DOUBLE CLICK Programs
- DOUBLE CLICK the Printscreen 95 Folder
- RIGHT CLICK the One Shot Icon
- Select PROPERTIES
- Select the Shortcut Tab
- Place the cursor in the Short Cut Key field
- Press "P" to set Ctrl-Alt-P as the shortcut key sequence, (example) Any letter can be used.

You can then print the full screen using the [Shortcut Key Sequence](#) at any time, and use the Print and Alt-Print key sequences to copy screen images to the clipboard.

