

# ***TaskView 2.0***

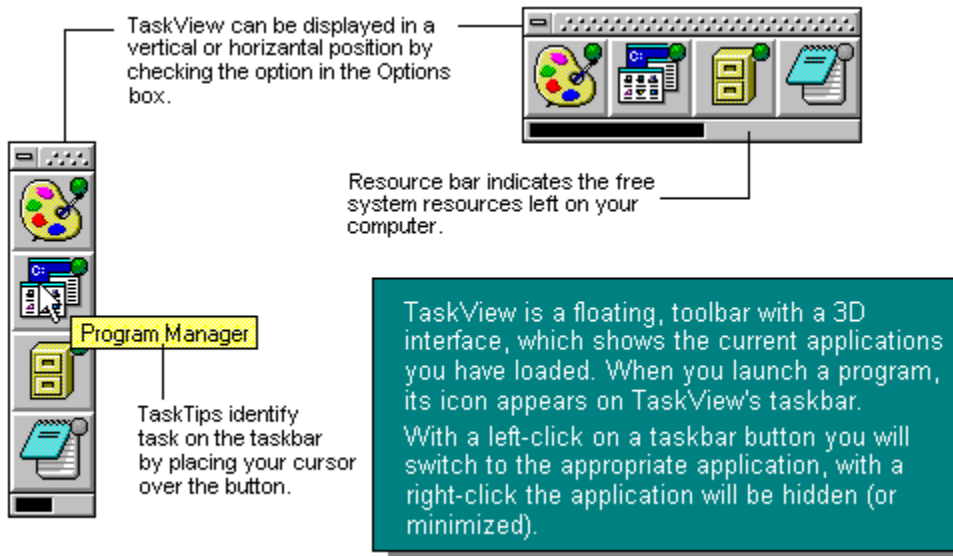


*Quick  
Preview*



Start Preview

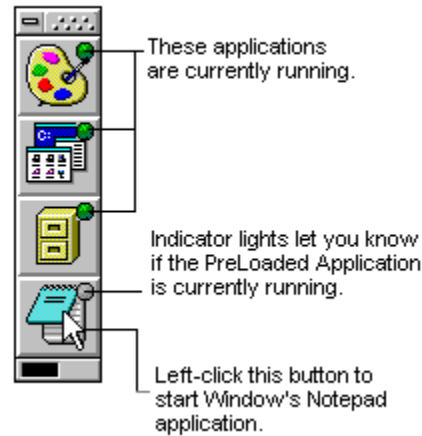
# Task Switcher



# PreLoaded Applications

With TaskView, you can load your favorite applications for **quick launching**. As with TaskView pictured to the left, Notepad is a 'PreLoaded Application'. To launch it, you left-click on its button. After the application has started, you can switch to and hide it with TaskView like a normal task.

Clicking your middle mouse button or clicking and holding your right mouse button will bring up a context sensitive menu to control the app. **Click here**



## Shapes of TaskView 2.0

### Caption Bar Shape:

this feature shrinks TaskView so it fits in the caption bar of a maximized application. ↓



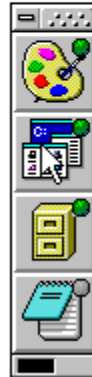
### Auto Shape:

this feature sets TaskView's shape automatically to fit within your desktop. As shown above it doubles up instead of going off the screen. ↓



### Auto-Min/Restore:

this feature shows TaskView as an icon until your cursor moves over it, then it automatically restores itself until the cursor is moved off. Then it minimizes to the icon shape. →





## Context Sensitive Menu

<b>C</b> lose Application	• Closes the application
Always on <b>T</b> op	• Places the application on the top of other apps
<b>R</b> estore	• Restores the application to its original size
M <b>a</b> ximize	• Maximizes the application
M <b>i</b> nimize	• Minimizes the application
<b>A</b> dd to App List	• Makes the application a 'PreLoaded App'
<b>E</b> dit Properties...	• Edits a 'PreLoaded Apps' properties
<b>O</b> ptions...	• Opens the Options dialog box

## Other Features...

Click on items below to see the actual utility.



### **Task Operations**

Functions to arrange, position, size and manipulate the tasks running on your desktop



### **Run / Browse**

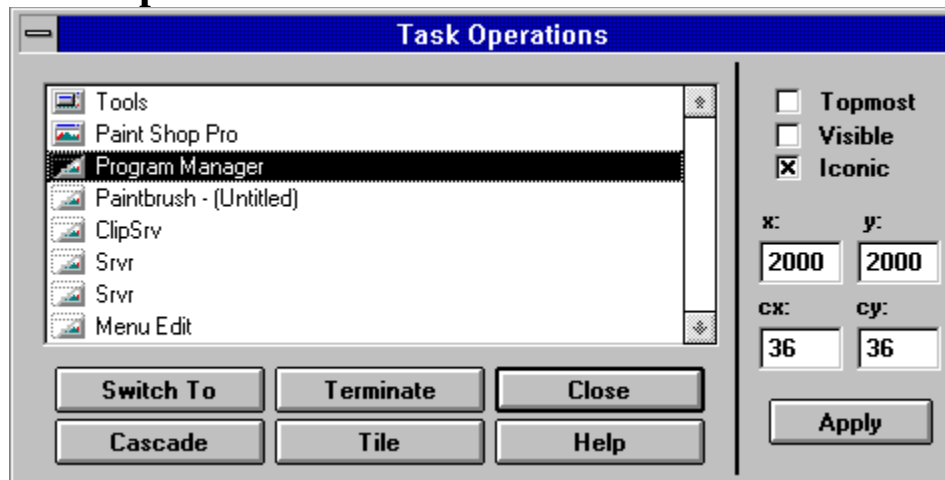
Browse through your directories and launch an applications from a command line.



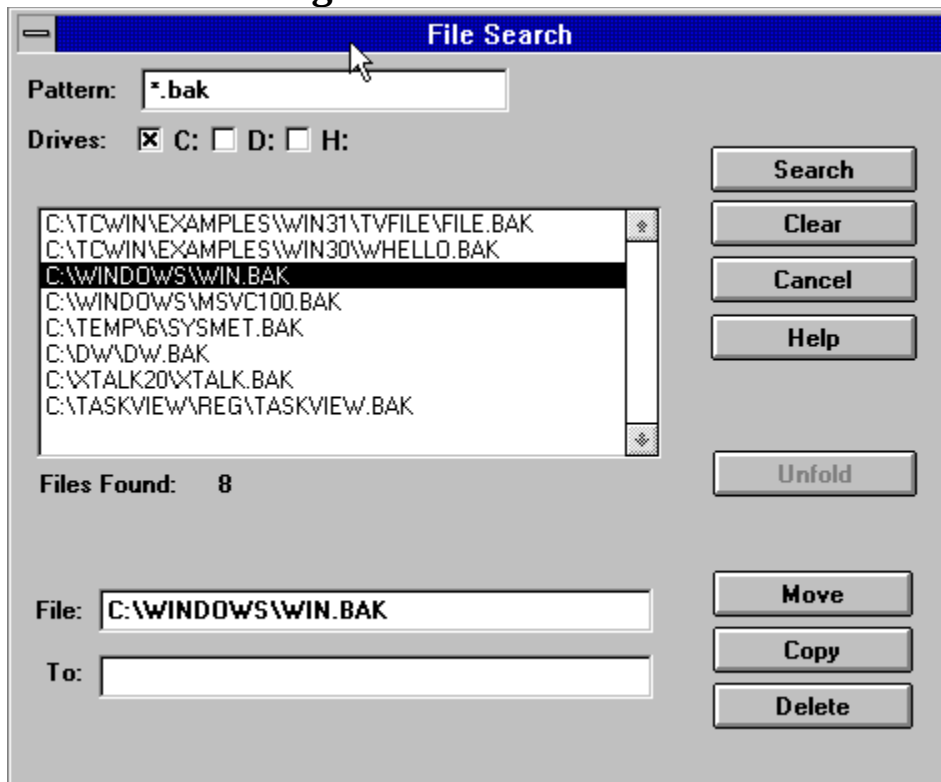
### **File Find / Management**

Find utility which lets you move, copy or delete the files you search for.

## Task Operations



## File Find / Management



A screenshot of a 'File Search' dialog box. The title bar is blue with the text 'File Search'. Below the title bar, there is a 'Pattern:' label followed by a text box containing '\*.bak'. Below that is a 'Drives:' label followed by three checkboxes: 'C:' (checked), 'D:' (unchecked), and 'H:' (unchecked). To the right of these are five buttons: 'Search', 'Clear', 'Cancel', 'Help', and 'Unfold'. Below the drives section is a list box containing eight file paths. The third item, 'C:\WINDOWS\WIN.BAK', is selected and highlighted. Below the list box is the text 'Files Found: 8'. At the bottom left, there are two text boxes: 'File:' containing 'C:\WINDOWS\WIN.BAK' and 'To:' which is empty. To the right of these are three buttons: 'Move', 'Copy', and 'Delete'.

**File Search**

Pattern: \*.bak

Drives: ☒ C: ☐ D: ☐ H:

C:\TCWIN\EXAMPLES\WIN31\TVFILE\FILE.BAK  
C:\TCWIN\EXAMPLES\WIN30\WHELLO.BAK  
**C:\WINDOWS\WIN.BAK**  
C:\WINDOWS\MSVC100.BAK  
C:\TEMP\6\SYSMET.BAK  
C:\DW\DW.BAK  
C:\XTALK20\XTALK.BAK  
C:\TASKVIEW\REG\TASKVIEW.BAK

Files Found: 8

File: C:\WINDOWS\WIN.BAK

To:

Search  
Clear  
Cancel  
Help  
Unfold  
Move  
Copy  
Delete



## Run / Browse

